



VF EMS SYSTEM

RTMD/EMS SYSTEM

Electronic thermostat with built-in datalogger, GPS and remote temperature data log via GSM. 5" touch display with access to various actual temperatures, datalog, and diagnosis.
Solar powered including datalog of voltage from PV cells.

Watch our EMS video here: [EMS FEATURES & FUNCTIONS](#)



SPECIFICATIONS		VALUE	
Display		5" touch screen	
Temperature range		-25°C to +85°C	
Accuracy		±0.5°C from -10°C to +85°C	
Battery Backup		72 hours	
Sim Card		Supplied with global sim card	
Sim Card optional		Can be supplied with local sim card (limited to specific countries)	
Voltage range		10-45VDC	
IP rating		54	
Type		Integrated in lid of VLS appliance	

SENSORS		VALUE	DATA LOGGER		VALUE
Vaccine compartment 1		YES	Temperature data		5
Vaccine compartment 2		YES	Temperature reports		30/60 days
Freezer (if applicable)		YES	Solar voltage		YES
Ice bank		YES	Compressor state on/off		YES
Ambient		YES	Lid Status/Alarm		YES
Compressor		YES	GPS coordinates		YES
Lid opening		YES	SMS/Email alarms		YES
Battery		YES			

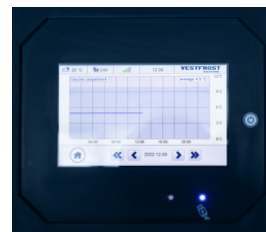
FEATURES	
Realtime temperature and functionality monitoring	
Setpoint settings showed in onlined dashboard	
Option to remote control unit setpoints	
4 internal temperature sensors	
1 ambient sensor	
Open lid sensor	
Remote alarms	
24/7 GSM connectivity	
PV Solar Panel output sensor	
Compressor temperature sensor	
1 x USB energy harvesting option charging e.g.phone	
Will inform health staff when weakly/monthly maintenance is required	



Password access



Remote alarm logs



Real time temperature monitoring



GPS coordinates & GSM connectivity