



ÇK-400 WASTE CONTAINER TECHNICAL SPECIFICATION



FEBRUARY/2020

3. PRODUCT LABEL

	
P1190116-1-2 www.hipas.com.tr	
ÜRÜN KODU:	ÇK-400
RENK:	SARI
MİKTAR:	1
TARİH/SAAT:	29.10.2019 12:32
MÜŞTERİ ADI:	-
 	OPERATÖR CANER K

4. PRODUCT VOLUME

The volume of the total space remaining inside the product when the lid is closed is 120 liters.

5. SEMI-FINISHED PRODUCTS CONSISTING THE PRODUCT AND THEIR WEIGHTS

SEMI-FINISHED RAW MATERIAL		WEIGHT (GR)
BODY	HDPE (HIGH DENSITY POLYETHYLENE)	5900G
LID	HDPE (HIGH DENSITY POLYETHYLENE)	560G
WHEEL	RUBBER	835 GR/AD
SHAFT	IRON	380 GR
	TOTAL WEIGHT	8510 GR

PREPARER	APPROVED BY
Quality management representative	General manager

5.1. HDPE (HIGH DENSITY POLYETHYLENE)

HDPE is a high density polyethylene material obtained from petroleum.

Its High resistance to chemical substances and its resistance to impacts are other

higher than polyethylene. Raw material for body and cover production in plastic injection

It is used as. Technical Information Sheet is as follows

Resin Properties	Unit	Typical Value	Test Method
Melt Index	g/10'	18	D1238
Density	g/cc	0.952	D1505
Thermal Properties	Unit	Typical Value	Test Method
Vicat Softening Point	°C	122	D1525
Molded Properties	Unit	Typical Value	Test Method
Flectural Modulus	Mpa	1350	D790
Notched Izod Impact @ 23 °C	J/m	25	D256/A

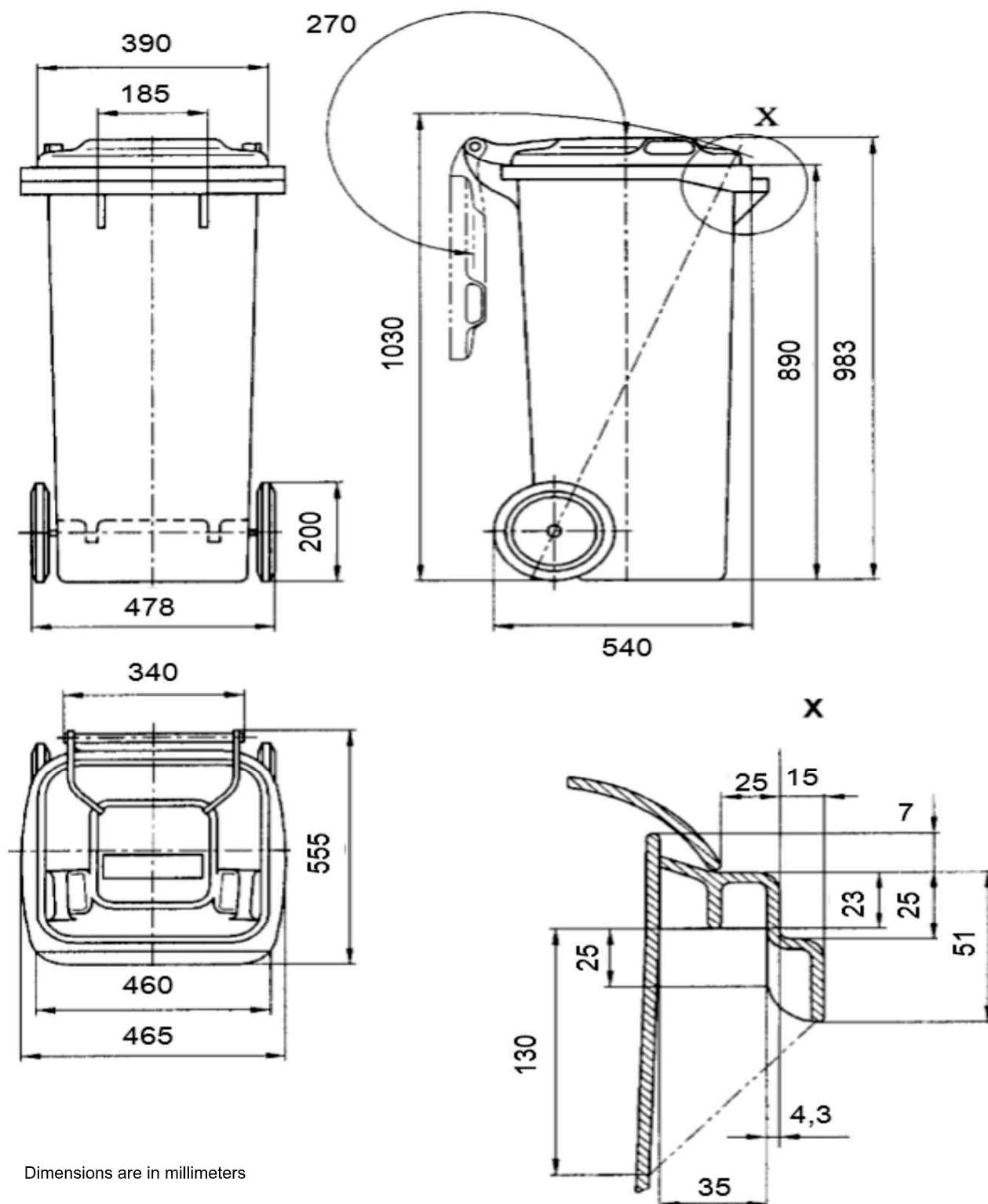
5.2. WHEELS

Product features

Connection style	Pin connection
Rim material coating	Polypropylene (Moblen)
Material	Rubber
Bearing type	Burçlu
Wheel diameter (mm)	200
Total height (mm)	50
Carrying capacity (Kg)	110
Table dimensions (mm) / Bolt diameter (mm) / Pin diameter (mm) / Hole diameter (mm) / Socket dimensions (mm)	20
Table hole axes (mm) / Bolt length (mm) / Pin length (mm) / Socket length (mm) / Hub length (mm)	40
Coating feature	Soft Sole
Operating temperature	-20°C / +60°C
Application area	Garbage container

PREPARER	APPROVED BY
Quality management representative	General manager

6. PRODUCT TECHNICAL DRAWINGS



Dimensions are in millimeters

PREPARER	APPROVED BY
Quality management representative	General manager