



Chongqing New World Trading Co.,Ltd

Address: Room 1001,Unit 2,No.88,Jianxin East Road, Jiangbei District,Chongqing, China

Tel: 0086-023-67728212

Fax:0086-023-67728109

Universal Filter Pipette Tips With Box

Introduction :

Filter Pipette Tips are racked, sterile and universal-fit. They are the recommended filtered pipette tips for different brand pipettors. They are also compatible with Thermo, Brand, Eppendorf, Gilson and Rainin micropipettes. Our filter tips offer extra protection from contamination by use of a barrier between the tipcone of the pipette and the sample.

Specifications :

Made of high quality polypropylene material

Unique long tube mouth design makes fluid transfer more accurate

With super hydrophobicity, the hydrophobic filter element forms a barrier to aerosols, eliminating the risk of cross-contamination;

Suitable for commonly used pipettes on the market, with optimized aperture to ensure smooth sample extraction; (at 121°C for 20 min);

Code	Volume	Type	Material	Color	Packing
TYM-10	10ul	DNASE RANSE FREE	PP	Transparent	96pcs/box, 10boxes/middle box, 50boxes/ctn
TYM-50	50ul				
TYM-100	100ul				
TYM-200	200ul				
TYM-1000	1000ul				
TYM-1250	1250ul				

Details





Chongqing New World Trading Co.,Ltd

Address: Room 1001,Unit 2,No.88,Jianxin East Road, Jiangbei District,Chongqing, China

Tel: 0086-023-67728212

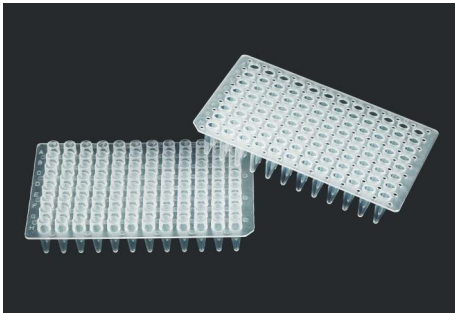
Fax:0086-023-67728109

Feature:

1. Manufactured from high-density, inert Ultra-high-molecular-weight polyethylene
- 2.Provides a strong barrier against contamination while not impeding airflow
- 3.Hydrophobic properties prevent absorption of samples
- 4.Certified free of RNase, DNase, DNA, PCR inhibitors and pyrogen-free

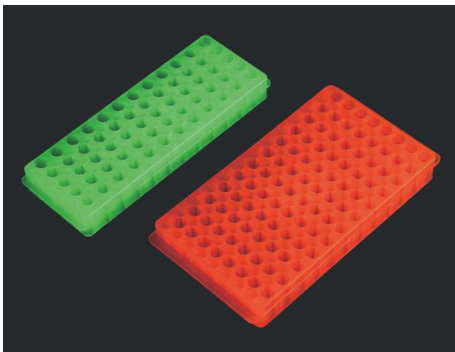
Coco Jiang





TYA16~TYA17 >>>

Code 编号	Description 描述	Packing 包装
TYA16	96-well PCR Plate, Plain End 96孔, PCR板, 平口	1000pcs/ctn
TYA17	96-well PCR Plate, Bulged End 96孔, PCR板, 凸口	1000pcs/ctn



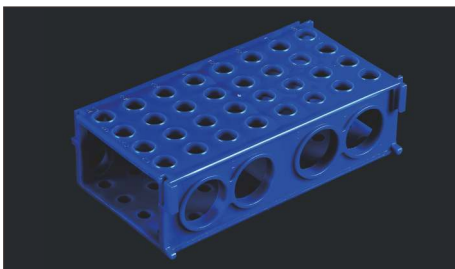
TYA18~TYA19 >>>

Code 编号	Description 描述	Packing 包装
TYA18	96-well PCR Plate for 0.5ml and 1.5ml Centrifuge Tube 96孔, 存放0.5ml和1.5ml离心管两用板	100pcs/ctn
TYA19	60-well PCR Plate for 0.5ml and 1.5ml Centrifuge Tube 60孔, 存放0.5ml和1.5ml离心管两用板	100pcs/ctn



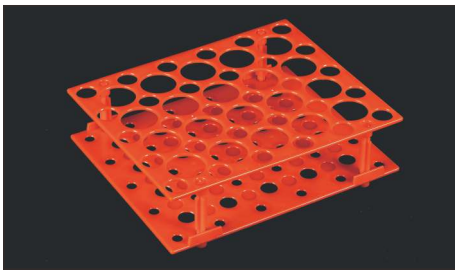
TYA20~TYA23 >>>

Code 编号	Description 描述	Packing 包装
TYA20	72-well 1.5ml Centrifuge Tube Box 72孔, 1.5ml离心管盒	80pcs/ctn
TYA21	72-well 0.5ml Centrifuge Tube Box 72孔, 0.5ml离心管盒	80pcs/ctn
TYA22	96-well 0.2ml Centrifuge Tube Box 96孔, 0.2ml离心管盒	250pcs/ctn
TYA23	32-well 5ml Centrifuge Tube Box 32孔, 5ml离心管盒	80pcs/ctn



TYA24 >>>

Code 编号	Description 描述	Packing 包装
TYA24	Multifunction Centrifuge Tube Box for 0.5ml, 1.5ml, 2ml, 50ml 多功能离心管架, 存放0.5ml, 1.5ml, 2ml, 50ml	1pc/bag, 50pcs/ctn



TYA25 >>>

Code 编号	Description 描述	Packing 包装
TYA25	PCR Tube Rack for 30pcs of 15ml and 20pcs of 50ml 离心管架, 存放30个15ml, 20个50ml	1pc/bag, 50pcs/ctn



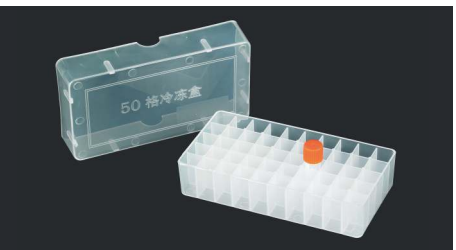
TYB01~TYB03 >>>

Code 编号	Description 描述	Packing 包装
TYB01	1.8ml Cryovial Tube, with Gasket, Printed Graduation 1.8ml冷冻管, 带垫圈, 印刷刻度	500pcs/bag, 10000pcs/ctn
TYB02	4ml Cryotube, with Gasket 4ml冷冻管, 带垫圈	500pcs/bag, 5000pcs/ctn
TYB03	5ml Cryotube, with Gasket, Printed Graduation 5ml冷冻管, 带垫圈, 印刷刻度	200pcs/bag, 2000pcs/ctn



TYB04~TYB08-1 >>>

Code 编号	Description 描述	Packing 包装
TYB04	0.5ml Cryotube, with Gasket, Free Standing 0.5ml冷冻管, 带垫圈, 可立式	500pcs/bag, 12000pcs/ctn
TYB04-1	0.5ml Cryotube, with Gasket, Free Standing, with Hinged Screw Cap 0.5ml冷冻管, 带垫圈, 可立式, 连盖	500pcs/bag, 10000pcs/ctn
TYB05	0.5ml Cryotube, with Gasket, Conical Bottom 0.5ml冷冻管, 带垫圈, 尖底	500pcs/bag, 25000pcs/ctn
TYB06	1ml Cryotube, with Gasket, Free Standing 1ml冷冻管, 带垫圈, 可立式	500pcs/bag, 10000pcs/ctn
TYB07	1.5ml Cryotube, with Gasket, Free Standing 1.5ml冷冻管, 带垫圈, 可立式	500pcs/bag, 10000pcs/ctn
TYB08	1.5ml Cryotube, with Gasket, Conical Bottom 1.5ml冷冻管, 带垫圈, 尖底	500pcs/bag, 10000pcs/ctn
TYB08-1	1.5ml Cryotube, with Gasket, Conical Bottom, with Hinged Screw Cap 1.5ml冷冻管, 带垫圈, 尖底, 连盖	500pcs/bag, 10000pcs/ctn



TYB09 >>>

Code 编号	Description 描述	Packing 包装
TYB09	50-well 1.8ml Cryotube Box 50孔1.8ml冷冻管盒	150pcs/ctn



Edta Tube
血常规管

Usage: applying to clinical haematology test, such as blood routine examination, all kinds of blood cells analysis (such as blood cell morphology examination, blood cell count, hematocrit, hemoglobin, sickling test, etc.)

用途：用于临床血液学检验，如血常规等。适用各种血细胞分析（如血细胞形态镜检、血细胞计数、红细胞比积、血红蛋白、镰变实验等）。

Code 编号	Material 材质	Additive 添加剂	Size(mm) 规格	Vol 采血量	Packing 包装	Ctn size(cm) 箱子尺寸	Gw (kg) 毛重
TYK11	PET	EDTA K2/K3	13*75	1-5ml	100pcs/rack 1800pcs/ctn	52*38*31	13.5
TYK11-1	Glass						18.2
TYK12	PET	EDTA K2/K3	13*100	5-7ml	100pcs/rack 1800pcs/ctn	52*38*38	15.8
TYK12-1	Glass						22
TYK13	PET	EDTA K2/K3	16*100	8-10ml	100pcs/rack 1200pcs/ctn	51*41*25	14
TYK13-1	Glass						17.5



Heparin Tube
肝素管

Usage: applying to clinical biochemistry, blood specimen collection for emergency biochemical tests and anticoagulation(blood rheology measurement, biochemical test, genetic diagnosis, enzymology, enzyme immunoassay, etc.)

用途：用于临床生化、急诊生化检验中血液样本的采集和抗凝（血变学测定、生化、基因诊断、酶学、酶免法等检验）。

Code 编号	Material 材质	Additive 添加剂	Size(mm) 规格	Vol 采血量	Packing 包装	Ctn size(cm) 箱子尺寸	Gw (kg) 毛重
TYK14	PET	Heparin lithium	13*75	3-5ml	100pcs/rack 1800pcs/ctn	52*38*31	13.5
TYK14-1	Glass						18.2
TYK15	PET	Heparin lithium	13*100	5-7ml	100pcs/rack 1800pcs/ctn	52*38*38	15.8
TYK15-1	Glass						22
TYK16	PET	Heparin lithium	16*100	8-10ml	100pcs/rack 1200pcs/ctn	51*41*25	14
TYK16-1	Glass						17.5

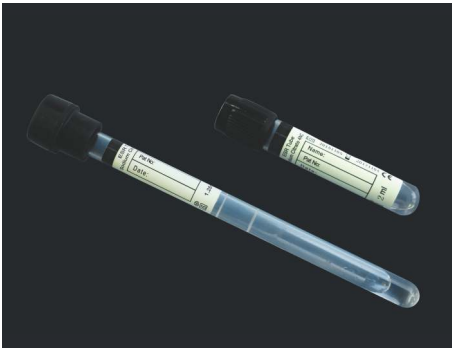


Glucose Tube
血糖管

Usage: Applying to clinical determination of blood glucose. The original characters of blood specimen can be maintained for a long time.

用途：用于临床血糖值的测定，能较长时间保持血液样本的原始性状。

Code 编号	Material 材质	Additive 添加剂	Size(mm) 规格	Vol 采血量	Packing 包装	Ctn size(cm) 箱子尺寸	Gw (kg) 毛重
TYK17	PET	Sodium fluoride /potassium oxalate	13*75	2-5ml	100pcs/rack 1800pcs/ctn	52*38*31	13.5
TYK17-1	Glass						18.2
TYK18	PET	Sodium fluoride /potassium oxalate	13*100	5-7ml	100pcs/rack 1800pcs/ctn	52*38*38	15.8
TYK18-1	Glass						22
TYK19	PET	Sodium fluoride /potassium oxalate	16*100	8-10ml	100pcs/rack 1200pcs/ctn	51*41*25	14
TYK19-1	Glass						17.5



ESR Vacuum Tube
血沉管

Usage: 1.28ml tube with a total capacity of 1.6ml, is equipped with 0.129mol/L sodium citrate 0.32ml. Collect blood 1.28ml to the central scale and after blood collection, we immediately invert the tube gently for 4-5 times so as to mix blood completely with anticoagulant, then put the tube into a D2010 automatic ESR analyzer and after 30 minutes read the data. This product can save time and effort and at the same time prevent cross infection.

用途：1.28ml管装有0.129mol/L柠檬酸钠0.32ml，采血1.28ml，至中央刻度处，总容量为1.6ml。采血后，立即轻轻反复颠倒4-5次，使抗凝剂充分与血液混匀。然后放入D2010型自动血沉分析仪内，30分钟后即可读数。该产品省时、省力，从源头杜绝了交叉感染。

Code 编号	Material 材质	Additive 添加剂	Size(mm) 规格	Vol 采血量	Packing 包装	Ctn size(cm) 箱子尺寸	Gw (kg) 毛重
TYK20	PET	Sodium citrate1:4	13*75	1.6-2.4ml	100pcs/rack 1800pcs/ctn	52*38*31	13.5
TYK20-1	Glass						18.2

Code 编号	Material 材质	Additive 添加剂	Size(mm) 规格	Vol 采血量	Packing 包装	Ctn size(cm) 箱子尺寸	Gw (kg) 毛重
TYK21	Glass	Sodium citrate1:4	9*120	1.28ml	100pcs/rack 1800pcs/ctn	48*37*45	18.2