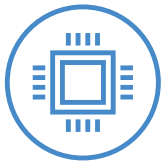


IDEACENTRE AIO 3i

Efficient performance for demanding households.

A family PC for all generations, the Lenovo IdeaCentre AIO 3i seamlessly handles heavy multitasking sessions from demanding households with up to the 12th Generation Intel® Core™ i7 processors and optional NVIDIA® GeForce® MX550 graphics, all in a compact space-saving design that looks good anywhere you put it. Watch shows with the family on a vivid IPS FHD display with room-filling audio by Harman Kardon®.

WHY YOU SHOULD BUY LENOVO IDEACENTRE AIO 3i



Built for heavy use

Engineered for heavy workloads and relentless multitasking from multiple users in a household, the IdeaCentre AIO 3i packs powerful up to the 12th Generation Intel® Core™ i7 processors and optional NVIDIA® GeForce® MX550 graphics on select models in its compact chassis. Store everything you'll ever need and access them faster. Collect up to 1,000 movies, 30,000 songs or 40,000 photos on a massive up-to-1 TB solid state drive that offers faster boot times, file transfers and overall system responsiveness.



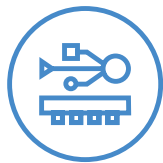
Designed to make sense

Get started quickly and securely with facial login with the built-in infrared webcam and drag files intuitively with the touchscreen on selected models. Show more details of your presence and background with the 5MP clarity when video chatting or vlogging. Pull up or push down the webcam to control who gets to see you. Keep your desk clutter-free by clipping your cables to the hinge, while making it easier to manage your PC and phone with the dedicated phone holder dock on the IdeaCentre AIO 3i's space-saving stand.



Made for family time

Experience the crystal-clear quality from a wide viewing angle when watching Netflix with family and friends on the IdeaCentre AIO 3i's IPS Full-HD display. See more of the screen that features thin and narrow bezels on three sides. Ensure the audio from your Spotify playlist fills up the room with the IdeaCentre AIO 3i's Harman Kardon®-certified audio system, featuring two 3W stereo speakers.



More connectivity options

The IdeaCentre AIO 3i packs more than enough ports for your essentials, including two USB 2.0 ports, two USB 3.1 Gen 2 Type-A ports with 10 GB per second data transfer speeds, a Power DC Jack and HDMI™-Out, as well as a microphone/headphone combo and 1000 LAN.



WWW.LENOVO.COM



Lenovo

IDEACENTRE AIO 3i

SPECIFICATIONS

IdeaCentre AIO 3i (22", 7) | IdeaCentre AIO 3i (24", 7) | IdeaCentre AIO 3i (27", 7)*

PERFORMANCE

Processor

IdeaCentre AIO 3i (27", 7)

Intel® Core™ i7-1260P

Intel® Core™ i5-1240P

Intel® Core™ i3-1220P

IdeaCentre AIO 3i (24", 7)

Intel® Core™ i7-1260P

Intel® Core™ i5-1240P

Intel® Core™ i3-1220P

Intel® Pentium® 8505

Intel® Celeron® 7305

IdeaCentre AIO 3i (22", 7)

Intel® Core™ i5-1240P

Intel® Core™ i3-1220P

Intel® Pentium® 8505

Intel® Celeron® 7305

Operating System

Windows 11 Home

Windows 11 Pro¹

Graphics

Up to NVIDIA® GeForce® MX550; 2 GB

Camera (s)

IdeaCentre AIO 3i (22", 7)

720P

IdeaCentre AIO 3i (24", 7)

720P / 5MP IR

IdeaCentre AIO 3i (27", 7)

5MP / 5MP IR

Microphone

Headphone & Microphone Combo

Audio

2 x 3W Stereo Speakers

Memory

DDR4: 4 GB / 8 GB / 16 GB

Storage

M.2 PCIe SSD Gen 3 x 4

128 GB / 256 GB / 512 GB / 1 TB

M.2 2280 QLC SSD

512 GB

HDD

1 TB

Dual Storage (SSD + HDD)

128 GB + 1 TB / 256 GB + 1 TB /

512 GB + 1 TB / 1 TB + 1 TB

Power Supply

90W / 135W

DESIGN

Display

IdeaCentre AIO 3i (22", 7)

21.5" FHD (1920 x 1080) IPS Touchscreen²

IdeaCentre AIO 3i (24", 7)

23.8" FHD (1920 x 1080) IPS Touchscreen²

IdeaCentre AIO 3i (27", 7)

27" FHD (1920 x 1080) IPS Touchscreen²

Dimensions (W x D x H)

IdeaCentre AIO 3i (22", 7)

(mm) : 490.26 x 185.34 x 404.89

(inches) : 19.3" x 7.3" x 15.94"

IdeaCentre AIO 3i (24", 7)

(mm) : 541 x 185.34 x 433.56

(inches) : 21.3" x 7.3" x 17.07"

IdeaCentre AIO 3i (27", 7)

(mm) : 613.1 x 200 x 472.91

(inches) : 24.14" x 7.87" x 18.62"

Net Weight

IdeaCentre AIO 3i (22", 7)

Starting at 6.07 kg (13.38 lbs)

IdeaCentre AIO 3i (24", 7)

Starting at 6.81 kg (15.01 lbs)

IdeaCentre AIO 3i (27", 7)

Starting at 8.77 kg (19.33 lbs)

Colors

Business Black

Terrazzo White

CONNECTIVITY

WLAN & Bluetooth³

WiFi 6 (2x2 802.11 ax),

WiFi 5 (2x2 802.11 ac) &

Bluetooth® Combo Card

Input/Output (I/O) Ports

2 x USB 2.0

2 x USB 3.1 Gen 2³

1000 LAN

Headphone & Microphone Combo

Power DC-In

HDMI™-Out

PRELOADED SOFTWARE

- Lenovo Vantage
- Microsoft 365
- McAfee® LiveSafe™

¹ In selected countries.

² Optional.

³ The actual transfer speed of the USB 3.1 Gen 2 will vary and, depending on many factors, such as the processing capability of host and peripheral devices, file attributes and other factors related to system configuration and your operating environments, will be slower than a speed of 10 Gbit/s.



OPTIONS & ACCESSORIES



Lenovo Professional Ultraslim
Combo Keyboard & Mouse

*Example of Lenovo
marketing naming
convention



WWW.LENОВО.COM

Lenovo reserves the right to alter product offerings and specifications at any time, without notice. Lenovo makes every effort to ensure accuracy of all information but is not liable or responsible for any editorial, photographic or typographic errors. All images are for illustration purposes only. For full Lenovo product, service and warranty specifications visit www.lenovo.com. Lenovo makes no representations or warranties regarding third party products or services. **Trademarks:** The following are trademarks or registered trademarks of Lenovo: Lenovo, the Lenovo logo, Ideapad, IdeaCentre, yoga and yoga home. Microsoft, Windows and Vista are registered trademarks of Microsoft Corporation. Ultrabook, Celeron, Celeron Inside, Core Inside, Intel, Intel Logo, Intel Atom, Intel Atom Inside, Intel Core, Intel Inside, Intel Inside Logo, Intel vPro, Itanium, Itanium Inside, Pentium, Pentium Inside, vPro Inside, Xeon, Xeon Phi, and Xeon Inside are trademarks of Intel Corporation in the U.S. and/or other countries. Other company, product and service names may be trademarks or service marks of others. Visit www.lenovo.com/lenovo/us/en/safecompl/ periodically for the latest information on safe and effective computing. ©2022 Lenovo. All rights reserved.

LENOVO SERVICES*

Lenovo Premium Care

Premium Care is the hassle-free solution for all your technical support needs. Upgrade your standard warranty with our front-of-the-queue customer support service and get 24/7 real-person support from experts who provide solutions on your first contact.

Lenovo Smart Performance

Smart Performance Services within Lenovo Vantage will keep your system running at optimum performance and proactively fix issues that affect PC performance, internet performance, and security.

Lenovo Accidental Damage Protection

Avoid the hassles of unexpected damage & repair costs. With coverage for drops, spills, electric surges, and broken LCD screens, accidental damage protection makes it easy to repair to your PCs and ensures your device is up and running fast.

Lenovo Warranty Extensions (1-to-3 Years Duration)

Gain complete peace of mind by extending your warranty to minimize unexpected expenses and repair costs.

* Depend on local availability.

McAfee® LiveSafe™

Register McAfee® to enjoy these benefits in your FREE 30-day trial.

- Award-winning Antivirus
- Multi-device Compatibility
- Password Manager
- Identity Theft Protection
- Safe Web Browsing
- Free Customer Support



Lenovo