


Product datasheet

Anti-TIE1 antibody [8D12D2] ab201986

2 References 5 Images

Overview

Product name	Anti-TIE1 antibody [8D12D2]
Description	Mouse monoclonal [8D12D2] to TIE1
Host species	Mouse
Tested applications	Suitable for: IHC-P, WB
Species reactivity	Reacts with: Human Predicted to work with: Mouse, Cow 
Immunogen	Recombinant fragment corresponding to Human TIE1 aa 350-650 (internal sequence). Database link: P35590 Run BLAST with Run BLAST with
Positive control	Human TIE1 (AA: 385-607) recombinant protein, TIE1 (AA: 385-607)-hlgGfc transfected HEK293 cell lysate, HepG2 cell lysate, Human ovarian cancer tissues, Human kidney tissues
General notes	<p>The Life Science industry has been in the grips of a reproducibility crisis for a number of years. Abcam is leading the way in addressing this with our range of recombinant monoclonal antibodies and knockout edited cell lines for gold-standard validation. Please check that this product meets your needs before purchasing.</p> <p>If you have any questions, special requirements or concerns, please send us an inquiry and/or contact our Support team ahead of purchase. Recommended alternatives for this product can be found below, along with publications, customer reviews and Q&As</p>

Properties

Form	Liquid
Storage instructions	Shipped at 4°C. Store at +4°C short term (1-2 weeks). Upon delivery aliquot. Store at -20°C long term. Avoid freeze / thaw cycle.
Storage buffer	Preservative: 0.05% Sodium azide Constituent: 99% PBS
Purity	Protein G purified
Purification notes	Purified from tissue culture supernatant.
Clonality	Monoclonal
Clone number	8D12D2

Isotype IgG1

Applications

The Abpromise guarantee Our [Abpromise guarantee](#) covers the use of ab201986 in the following tested applications. The application notes include recommended starting dilutions; optimal dilutions/concentrations should be determined by the end user.

Application	Abreviews	Notes
IHC-P		1/200 - 1/1000.
WB		1/500 - 1/2000. Predicted molecular weight: 125 kDa.

Target

Function Transmembrane tyrosine-protein kinase that may modulate TEK/TIE2 activity and contribute to the regulation of angiogenesis.

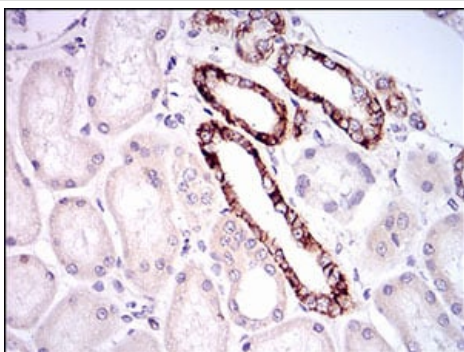
Tissue specificity Specifically expressed in developing vascular endothelial cells.

Sequence similarities Belongs to the protein kinase superfamily. Tyr protein kinase family. Tie subfamily. Contains 3 EGF-like domains. Contains 3 fibronectin type-III domains. Contains 2 Ig-like C2-type (immunoglobulin-like) domains. Contains 1 protein kinase domain.

Post-translational modifications Phosphorylated on tyrosine residues in response to ANGPT1, most likely by TEK/TIE2.

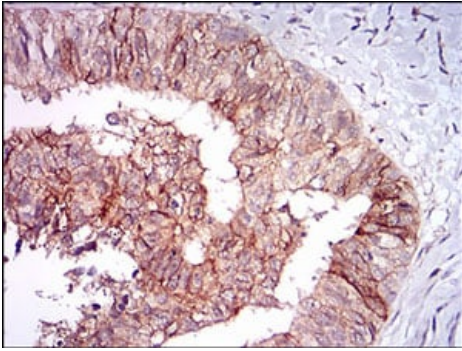
Cellular localization Cell membrane.

Images



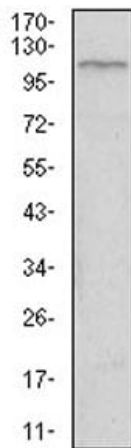
Immunohistochemical analysis of paraffin-embedded Human kidney tissue labeling TIE1 with ab201986 at 1/200 dilution with DAB staining.

Immunohistochemistry (Formalin/PFA-fixed paraffin-embedded sections) - Anti-TIE1 antibody [8D12D2] (ab201986)



Immunohistochemical analysis of paraffin-embedded Human ovarian cancer tissue labeling TIE1 with ab201986 at 1/200 dilution with DAB staining.

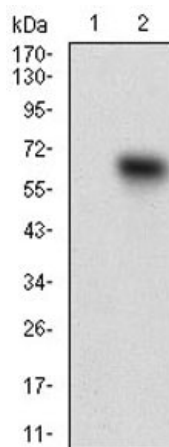
Immunohistochemistry (Formalin/PFA-fixed paraffin-embedded sections) - Anti-TIE1 antibody [8D12D2] (ab201986)



Anti-TIE1 antibody [8D12D2] (ab201986) at 1/500 dilution + HepG2 cell lysate

Predicted band size: 125 kDa

Western blot - Anti-TIE1 antibody [8D12D2] (ab201986)



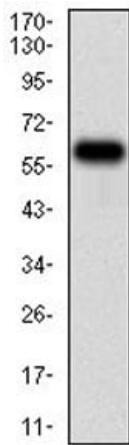
All lanes : Anti-TIE1 antibody [8D12D2] (ab201986) at 1/500 dilution

Lane 1 : HEK293 cell lysate

Lane 2 : TIE1 (AA: 385-607)-hlgGFc transfected HEK293 cell lysate

Predicted band size: 125 kDa

Western blot - Anti-TIE1 antibody [8D12D2] (ab201986)



Anti-TIE1 antibody [8D12D2] (ab201986) at 1/500 dilution + Human TIE1 (AA: 385-607) recombinant protein

Predicted band size: 125 kDa

Western blot - Anti-TIE1 antibody [8D12D2]
(ab201986)

Please note: All products are "FOR RESEARCH USE ONLY. NOT FOR USE IN DIAGNOSTIC PROCEDURES"

Our Abpromise to you: Quality guaranteed and expert technical support

- Replacement or refund for products not performing as stated on the datasheet
- Valid for 12 months from date of delivery
- Response to your inquiry within 24 hours
- We provide support in Chinese, English, French, German, Japanese and Spanish
- Extensive multi-media technical resources to help you
- We investigate all quality concerns to ensure our products perform to the highest standards

If the product does not perform as described on this datasheet, we will offer a refund or replacement. For full details of the Abpromise, please visit <https://www.abcam.com/abpromise> or contact our technical team.

Terms and conditions

- Guarantee only valid for products bought direct from Abcam or one of our authorized distributors