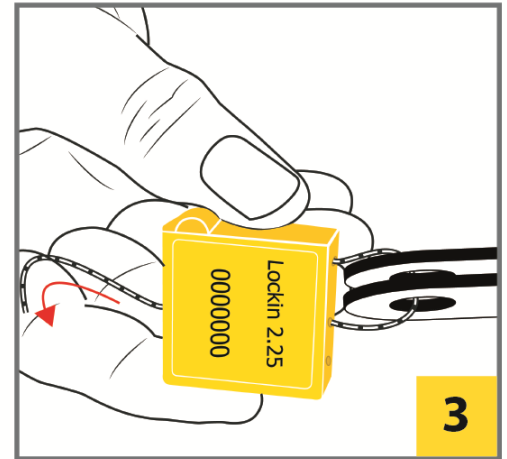
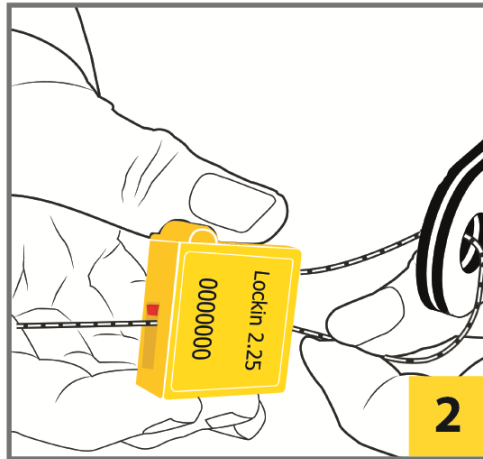
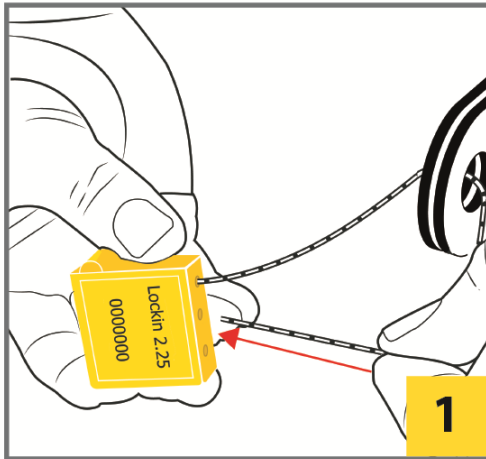
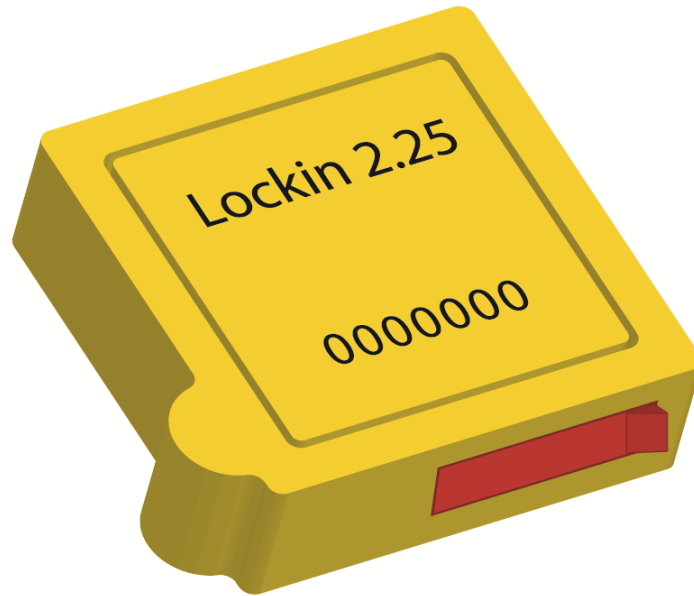




INSTRUCȚIUNI DE INSTALARE A SIGILIULUI LOCKIN 2,25 A.  
ИНСТРУКЦИЯ ПО УСТАНОВКЕ ПЛОМБЫ LOCKIN 2,25 А.  
INSTALLATION DIRECTIONS FOR THE "LOCKIN 2.25 A" SEAL



1. Treceți porțiunea lucrativă a cablului prin gaura primului canal longitudinal al corpului, situat lângă capătul fixat al cablului.

1. Пропустить рабочий отрезок троса через отверстие первого продольного канала корпуса, расположенное рядом с закрепленным концом троса.

1. Put the loose cable end through the hole of the first longitudinal channel of the housing, located near the fixed cable end.

2. Împingeți cablul și scoateți capătul porțiunii lucrative, care s-a ivit în partea de jos a sigiliului.

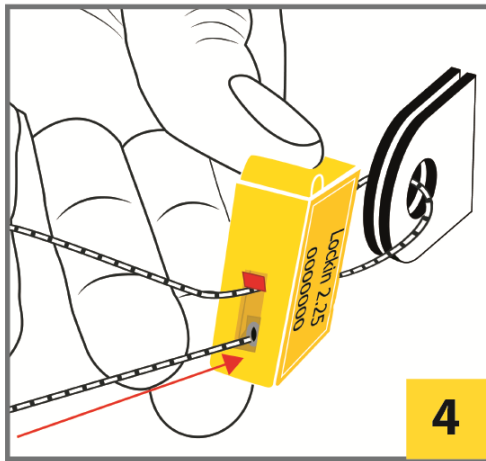
2. Протолкнуть трос и вытянуть конец рабочего отрезка, вышедший в нижней части пломбы.

2. Push the cable through and draw out the loose cable end appearing at the lower part of the seal.

3. Întindeți cablul pînă la formarea unei bucle minime în jurul urechiușelor.

3. Затянуть трос до образования петли минимального размера вокруг заушен.

3. Tighten the cable to a smallest loop around the lugs.

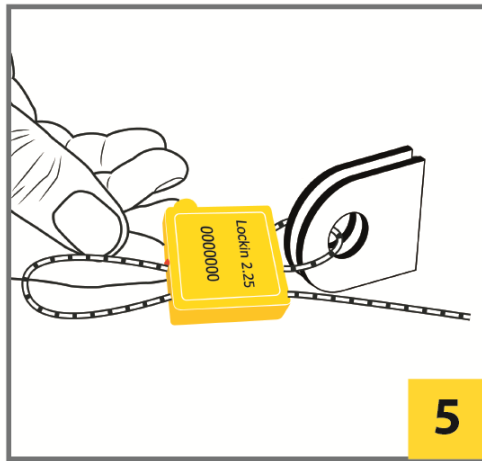


4

4. Trageți capătul liber al porțiunii lucrative a cablului prin partea inferioară a celui de-al doilea canal longitudinal al corpului, situat lângă gaura de ieșire a porțiunii lucrative a cablului.

4. Освобожденный конец рабочего отрезка троса провести через нижнее отверстие второго продольного канала корпуса, расположенное рядом с отверстием выхода рабочего отрезка троса.

4. Draw the appeared end of the cable through the lower hole of the second longitudinal channel of the housing located near the entrance hole of the loose cable end.

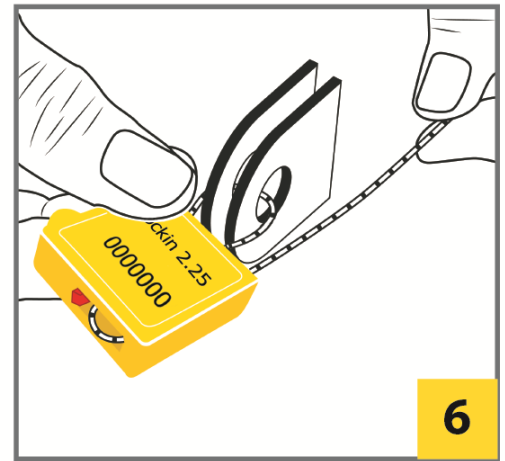


5

5. Împingeți cablul prin gaură.

5. Протолкнуть трос через отверстие.

5. Push the cable through the hole.

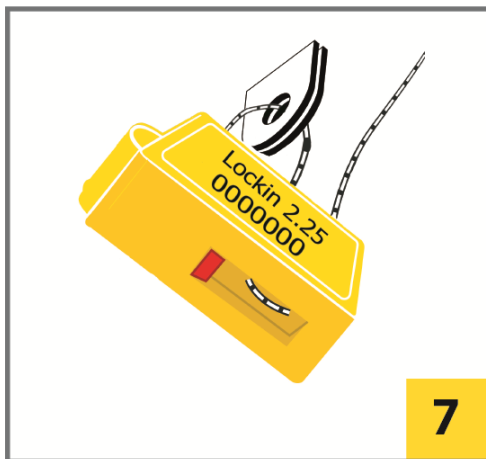


6

6. Scoateți cablul la exterior, maxim posibil, prin gaura din partea de sus a sigiliului.

6. Максимально вытянуть трос наружу через отверстие в верхней части пломбы.

6. Draw the cable out as much as possible through the hole at the upper part of the seal.

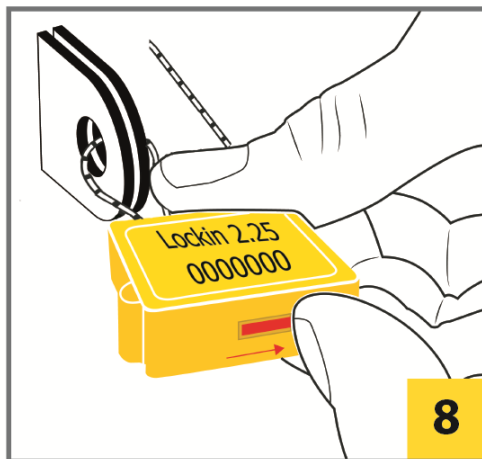


7

7. Întindeți la maxim bucla formată între cele două găuri longitudinale, ca aceasta să intre în canelură fără a lăsa goluri.

7. Образовавшуюся петлю между двумя продольными отверстиями максимально затянуть, чтобы она без зазоров вошла в паз.

7. Tighten the loop appeared between the two longitudinal holes as hard as to draw it into the slot without gaps.



8

8. Închideți dispozitivul de blocare, împiedicând accesul către mecanismele de blocare și cablu.

8. Задвинуть планку-защелку, перекрывая доступ к запорным механизмам и тросу.

8. Shut the latch plank back, blocking the access to the locking mechanism and the cable. The latch plank must be shut tight to the edge of the seal housing.



9

9. Instalarea sigiliului este finalizată.

9. Установка пломбы завершена.

9. The seal installation is completed.