

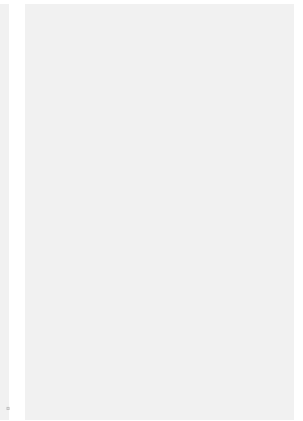
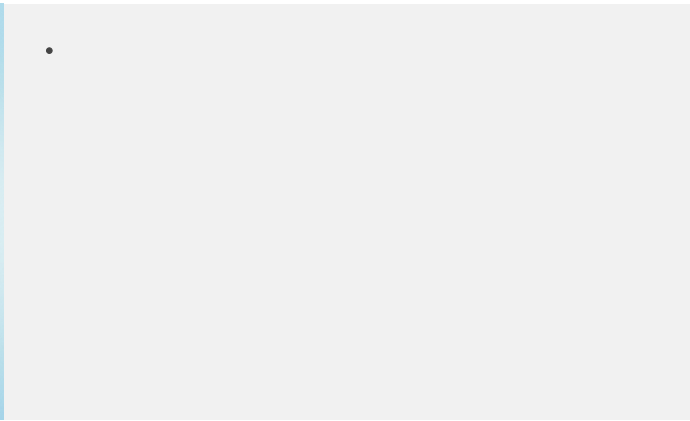
Product-Information-Sheet

Endoscopic Ancillaries

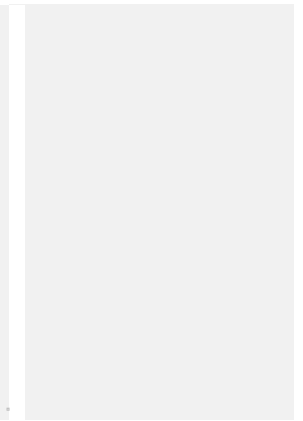
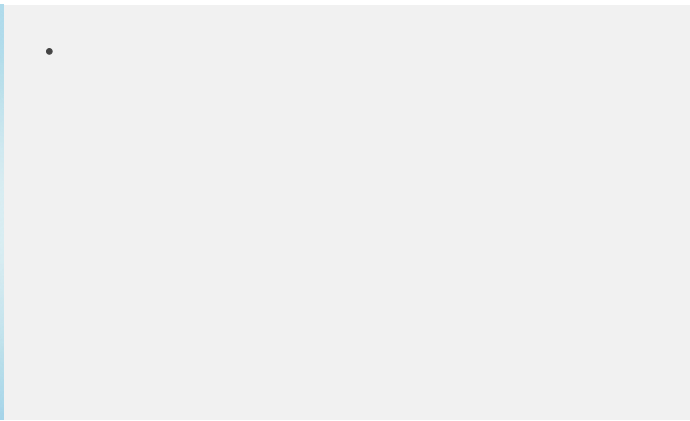
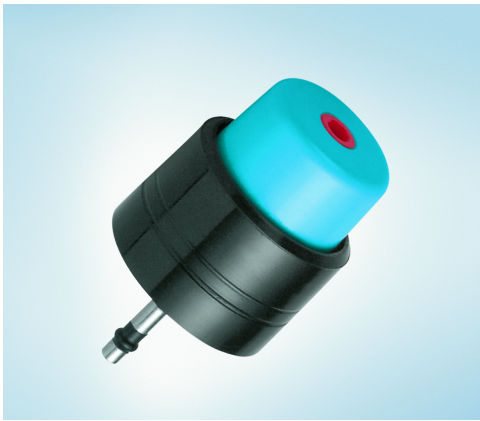
ENDOCUFF
VISION™



Article number	Article Name	Quantity value	Description	Endoscope Compatibility	Area Compatibility
028794	MB-358	10	Semi-disposable biopsy valve	Gastro, colono and duodenoscopes: OES 10, 20, 30, 40, E-Line, EVIS 100, 130, 140, 145, 160, 165, 180, 185, 170, 190, 200, 230, 240, 260, 290, 1100, 1200, 1500, V-Class Ultrasonic endoscopes: GF-UM20, -UM130, -UMQ130, -UM160, -UE160-AL5, -UE260-AL5, -UE190, -UE290, JF-UM20, CF-UM20, MH-908 blind probe	



Article number	Article Name	Quantity value	Description	Endoscope Compatibility	Area Compatibility
027797	MH-438	1	Air/water valve, lubricant-free	Gastro, colono and duodenoscopes: OES 40, EVIS 140, 145, 160, 165, 180, 185, 170, 190, 240, 260, 290, 1100, 1200, 1500, TGF-UC180J, -UC260J	



Article number	Article Name	Quantity value	Description	Endoscope Compatibility	Area Compatibility
027798	MH-443	1	Suction valve, lubricant-free	Gastro, colono and duodenoscopes: OES 40, EVIS 140, 145, 160, 165, 180, 185, 190, 240, 260, 290, 1100, 1200, 1500, TGF-UC180J, -UC260J	



Article number	Article Name	Quantity value	For Use With	Description	Area Compatibility
N3645700	MAJ-1817	1	Olympus light sources: CLV-190, -290SL	Xenon lightbulb	



Article number	Article Name	Quantity value	For Use With	Description	Area Compatibility
029421	MH-481	10	SSU-2; KV-2, -4, -5, -6	Suction-line filter	