

## Anexa 6 Analizator ionoselectiv Na, K

Caracteristici solicitate	Caracteristici oferite EasyLyte Na/K, Medica Corporation, SUA
<p>"Analizator ionoselectiv Na, K Cod 150600 Descriere Analizatoarele de electroliți testează unul sau mai multi electroliți folosind electrozi iono-selectivi. Parametrul Specificația Tip probă Ser da Urină da Plasmă da Sînge integru da Tip analize: Na da K da Spălare automată da Display LCD sau LED da Printer da Data management da Interfața PC da Reagenți Reagenți ""Să fie inclus toți reagenții necesari cît și alte acesorii, piese necesare pentru efectuarea analizelor și buna funcționare"" ≥ 1000 analize Perioada de valabilitate a reagentilor din momentul livrării ≥ 6 luni</p>	<p>Analizator ionoselectiv Na, K, -pag.1 Cod 150600 Descriere Analizatoarele de electroliți testează unul sau mai multi electroliți folosind electrozi iono-selectivi- pag 6 Parametrul Specificația Tip probă Ser da – pag 2 Urină da – pag 2 Plasmă da – pag 2 Sînge integru da – pag 2 Tip analize Na da – pag 1,6 K da -- pag 1,6 Spălare automată si la necesitate da – pag 6 (Calibration, in precesul de calibrare are loc si spalarea atit automata cit si la necesitate) Display LCD da -pag 1 poza Printer da -pag 1 poza Data management da - pag 5 Interfața PC da – pag 6 Reagenți Reagenți " inclusi toți reagenții necesari cît și alte acesorii, piese necesare pentru efectuarea analizelor și buna funcționare" - 1000 analize Perioada de valabilitate a reagentilor din momentul livrării ≥ 6 luni</p>

# MEDICA

Results Within Reach Since 1983

## **EasyLyte**<sup>®</sup> [medicacorp.com](http://medicacorp.com)

*Na<sup>+</sup>/K<sup>+</sup>*

*Na<sup>+</sup>/K<sup>+</sup>/Cl<sup>-</sup>*

*Na<sup>+</sup>/K<sup>+</sup>/Li<sup>+</sup>*

*Na<sup>+</sup>/K<sup>+</sup>/Ca<sup>++</sup>/pH*

*Na<sup>+</sup>/K<sup>+</sup>/Cl<sup>-</sup>/Ca<sup>++</sup>*

*Na<sup>+</sup>/K<sup>+</sup>/Cl<sup>-</sup>/Li<sup>+</sup>*



# EasyLyte<sup>®</sup>

easy inside and out

- **Easy to Use**

- Simple, menu-driven, Yes/No prompted operation
- Whole blood, serum, plasma or urine samples
- Results printed automatically in less than 60 seconds
- Automatic or on-demand calibration
- Automatic probe wiping

- **Easy to Maintain**

- All calibrants contained in convenient, disposable solutions pack
- All waste collected in solutions pack
- Disposable electrodes require no maintenance
- Modular design makes maintaining analyzer simple and fast

- **Easy to Afford**

- Low analyzer purchase price
- Low cost per test

- **Available in five models:**

- **EasyLyte** Na<sup>+</sup>/K<sup>+</sup>
- **EasyLytePLUS** Na<sup>+</sup>/K<sup>+</sup>/Cl<sup>-</sup>
- **EasyLyteLithium** Na<sup>+</sup>/K<sup>+</sup>/Li<sup>+</sup>
- **EasyLyteCalcium** Na<sup>+</sup>/K<sup>+</sup>/Ca<sup>++</sup>/pH
- **EasyLyteExpand** Na<sup>+</sup>/K<sup>+</sup>/Cl<sup>-</sup>/Ca<sup>++</sup> or Li<sup>+</sup>





**EasyLyte**

**EasyLyte®**

*Solutions Pack  
Kit de soluciones  
Confezione di soluzioni  
Lösungspackung  
Embalagem de Soluções  
Kit de soluciones*

CE REF 2121

Medica Corporation 1320 Park Drive  
Burlingame, CA 94010-3438  
© 2007 Medica Corporation  
All rights reserved. The Solution  
is what you hope. The Solution  
is what you need.

**MEDICA**  
01/2004 001 01



Modular, maintenance-free electrodes



# Cl-



Internal printer prints patient results, calibration values, quality control data, and results summaries, flagging abnormal results

Pressing Yes or No buttons is all that is required to analyze serum, plasma or whole blood



# K+

800 mL  
**EasyLyte® PLUS**  
**Na/K/Cl**  
ANALYZER

Solutions Pack  
Kit de soluciones  
Confezione di soluzioni  
Lösungspackung  
Embalagem de Soluções  
Kit de soluciones

CE REF 2121

MEDICA

Self-contained Solutions Pack contains liquid calibrants and collects all waste, eliminates sample contact



Capillary sampler is removable and disposable



### EasySampler

The modular EasySampler connects quickly to EasyLyte analyzers, enhancing laboratory performance.

- 21 sample positions
- Dedicated Stat position
- Normal/Abnormal QC positions
- Optional auto-repeat of out-of-range values

Li+

pH

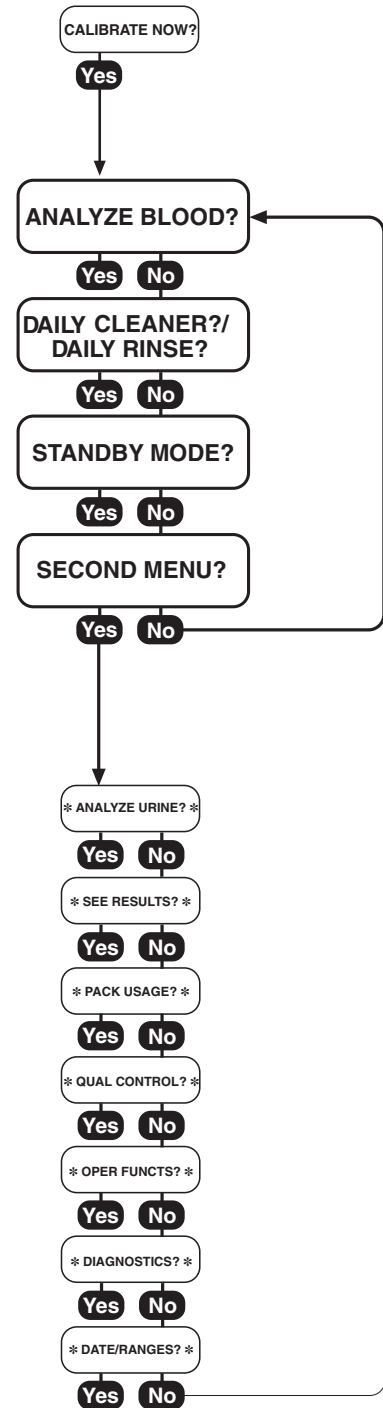
### Analyzer software insures ease of operation

Software computes quality control statistics, flags abnormal results, and monitors performance.

- Two button operation
- Automatic calibration
- User-friendly menu

Ca<sup>++</sup>

Na<sup>+</sup>



## Specifications

(Na<sup>+</sup>/K<sup>+</sup>, Na<sup>+</sup>/K<sup>+</sup>/Cl<sup>-</sup>, Na<sup>+</sup>/K<sup>+</sup>/Li<sup>+</sup>, Na<sup>+</sup>/K<sup>+</sup>/Ca<sup>++</sup>/pH, Na<sup>+</sup>/K<sup>+</sup>/Cl<sup>-</sup>/Ca<sup>++</sup>, Na<sup>+</sup>/K<sup>+</sup>/Cl<sup>-</sup>/Li<sup>+</sup>)

# MEDICA

Medica Corporation  
5 Oak Park Drive  
Bedford, MA 01730-1413  
USA

<b>CLIA Classification:</b>	Moderate Complexity
<b>Sample Type:</b>	Whole Blood, Serum, Plasma or Urine
<b>Sample Size:</b>	100 µL Whole Blood, Serum, Plasma, 60 µL capillary or 400 µL diluted (1:10) Urine
<b>Method:</b>	Direct measurement by Ion Selective Electrode (ISE)

USA 800 777 5983

Global +1 781 275 4892

Fax 781 275 2731

medicacorp.com

<b>Measurement Range:</b>	<b>Blood</b>	<b>Urine</b>	
	Na <sup>+</sup> :	20 – 200 mmol/L	Na <sup>+</sup> : 25 – 1000 mmol/L
	K <sup>+</sup> :	0.2 – 40 mmol/L	K <sup>+</sup> : 1.0 – 500 mmol/L
	Cl <sup>-</sup> :	25 – 200 mmol/L	Cl <sup>-</sup> : 25 – 500 mmol/L
	Li <sup>+</sup> :	0.2 – 5.0 mmol/L	
	Ca <sup>++</sup> :	0.1 – 6.0 mmol/L	
	pH:	6.0 – 8.0 Units	

<b>Display Resolution:</b>	Na <sup>+</sup> : 0.1 mmol/L	K <sup>+</sup> : 0.01 mmol/L	Cl <sup>-</sup> : 0.1 mmol/L
	Li <sup>+</sup> : 0.01 mmol/L	Ca <sup>++</sup> : 0.01 mmol/L	pH: 0.005 units

	Na <sup>+</sup> /K <sup>+</sup>	Na <sup>+</sup> /K <sup>+</sup> /Cl <sup>-</sup>	Na <sup>+</sup> /K <sup>+</sup> /Li <sup>+</sup>	Na <sup>+</sup> /K <sup>+</sup> /Ca <sup>++</sup> /pH	Na <sup>+</sup> /K <sup>+</sup> /Cl <sup>-</sup> /Ca <sup>++</sup>	Na <sup>+</sup> /K <sup>+</sup> /Cl <sup>-</sup> /Li <sup>+</sup>
<b>Analysis time (blood)</b>	55 sec	55 sec	55 sec	60 sec	60 sec	60 sec
<b>Urine Mode</b>	Yes	Yes	Yes**	No	Yes*	Yes**
<b>Analysis time (urine)</b>	90 sec	90 sec	90 sec	N/A	90 sec	90 sec
<b>Vet Mode</b>	Yes	Yes	No	No	No	No
<b>EasySampler</b>	Yes	Yes	Yes	Yes	Yes	Yes
<b>Capillary Samples</b>	Yes	Yes	Yes	No	No	No
<b>Bar Code Reader (Sample ID)</b>	No	Yes	Yes	Yes	Yes	Yes

<b>Data Storage:</b>	Patient results — up to 128 samples QC results — up to 20 each Normal, Low, and High
----------------------	---

<b>Calibration:</b>	Automatic or On-Demand
---------------------	------------------------

<b>Output:</b>	128 x 64 pixel graphic display 24 column thermal printer Serial port (RS-232), EasySampler port Serial Y cable, connects barcode reader / PC
----------------	---

<b>Ambient Conditions:</b>	15–32°C (60–90°F), <85% humidity
----------------------------	----------------------------------

<b>Power:</b>	100-240 VAC 50/60 Hz, 0.8A
---------------	----------------------------

<b>Size &amp; Weight:</b>	9.5"W x 16.5"H x 8.0"D (24 cm W x 42 cm H x 20 cm D) 13 lbs. (5.8 kg)
---------------------------	---

\* Calcium Results Not Reported

\*\* Lithium Results Not Reported