

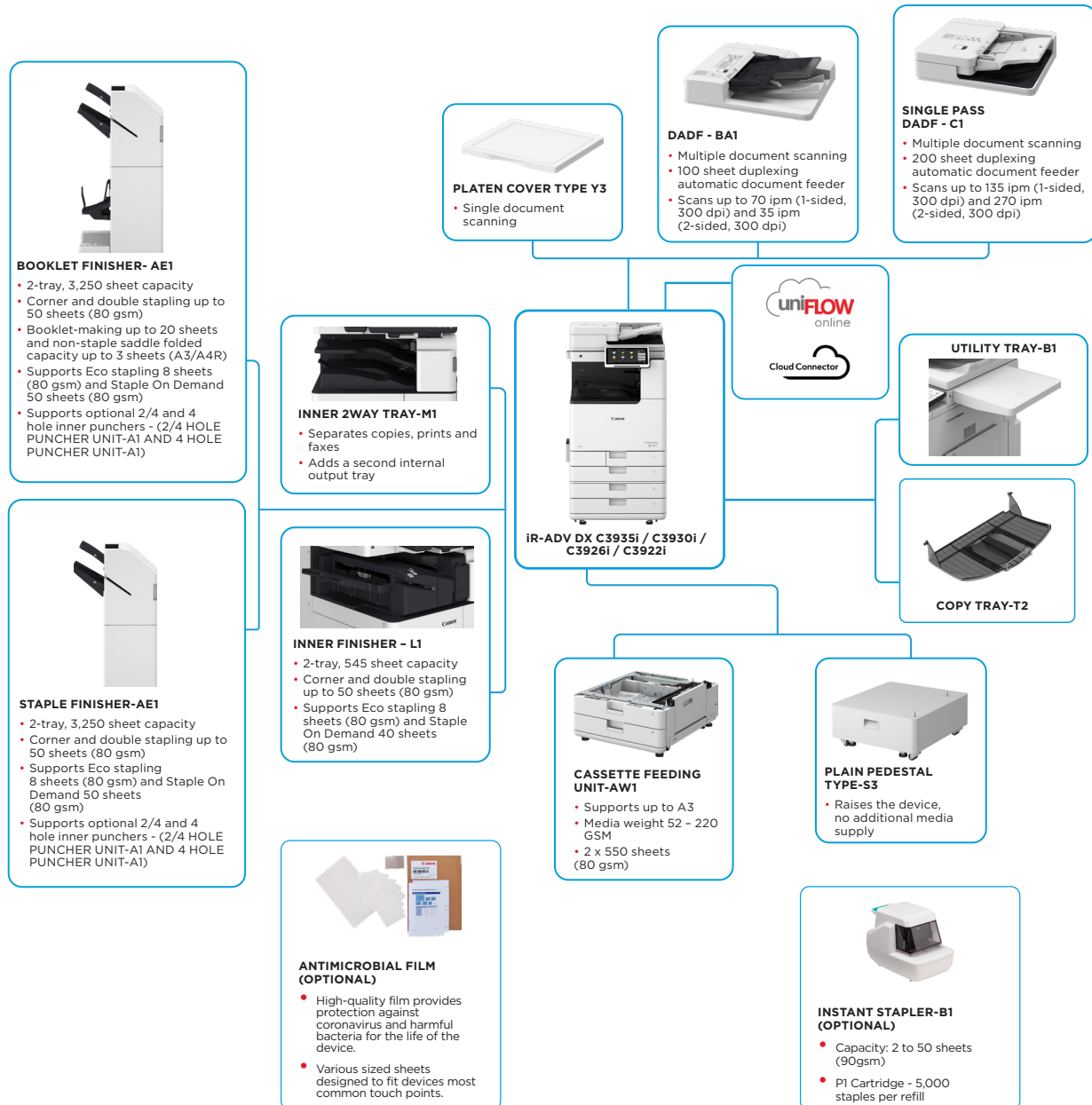
# imageRUNNER ADVANCE DX C3900 Series

## SMART COLOUR A3 MULTIFUNCTION DEVICES FOR EFFICIENT, HIGH-QUALITY DOCUMENT PROCESSING



Canon Europe Ltd.  
EU 2002-2024 Most Reliable A3 Brand

### MAIN CONFIGURATION OPTIONS



This flat configuration is for illustration purpose only. For a complete list of options and the exact compatibility relationships, please refer to the online [product configurator](#).

The Unified Firmware Platform (UFP) ensures that the latest feature upgrades and protection are available, for an enhanced user experience across the entire iR ADVANCE DX portfolio.



# TECHNICAL SPECIFICATIONS

# imageRUNNER ADVANCE DX C3900 Series

|  |  |  |   |
|--|--|--|---|
| <b>MAIN UNIT</b>                         |  | <b>Printing from mobile and cloud applications</b> | AirPrint, Mopria, Universal Print by Microsoft, Canon PRINT app, Cloud Connector and uniFLOW Online (optional)<br>A range of software and MEAP-based solutions are available to provide printing from mobile devices or internet-connected devices and cloud-based services depending on your requirements.<br>Please contact your sales representative for further information   |
| <b>Machine type</b>                      | A3 Color Laser Multifunctional   | <b>OS Standard Printing</b>                        | Android/Windows* 10/Windows* 11/Chrome OS/ macOS (11.2.2 or later), iOS (15.2 or later), iPadOS   |
| <b>Core functions</b>                    | Print, Copy, Scan, Send, Store and Optional Fax  | <b>Fonts</b>                                       | PS fonts: 136 Roman<br>PCL fonts: 93 Roman, 10 Bitmap fonts, 2 OCR fonts, Andale Mono WT J/K/S/T** (Japanese, Korean, Simplified and Traditional Chinese), Barcode fonts**  |
| <b>Processor</b>                         | 1.8GHz Dual Core Processor   | <b>Print Features</b>                              | Secured Print, Secure Watermark, Header/Footer, Page Layout, Two-sided Printing, Mixed Paper Sizes/Orientations, Front/Back Covers, Toner Reduction, Poster Printing, Forced Hold Printing, Print Date, Scheduled Printing, Printing Using a Virtual Printer  |
| <b>Control Panel</b>                     | 10.1" TFT LCD WSVGA Color Touch panel  | <b>Operating System</b>                            | UFR II: Windows* 10/11/Server 2012/Server 2012 R2/Server 2016/Server 2019/Server 2022, MAC OS X (10.13 or later)<br>PCL: Windows* 10/11/Server 2012/Server 2012 R2/Server 2016/Server 2019/Server 2022, MAC OS X (10.13 or later)<br>PS: Windows* 10/11/Server 2012/Server 2012 R2/Server 2016/Server 2019/Server 2022, MAC OS X (10.13 or later)<br>PPD: Windows* 10/11, MAC OS X (10.13 or later)   |
| <b>Memory</b>                            | Standard: RAM 4.5GB  | <b>COPY SPECIFICATIONS</b>                         |   |
| <b>Storage</b>                           | Standard: (SSD) 256 GB<br>Optional: (SSD) 1TB  | <b>Copy Speed (BW and CL)</b>                      | iR-ADV DX C3935i<br>1-sided: Up to 35 ppm (A4, A5, A5R, A6R), Up to 17 ppm (A3), Up to 23 ppm (A4R)<br>iR-ADV DX C3930i<br>1-sided: Up to 30 ppm (A4, A5, A5R, A6R), Up to 15 ppm (A3), Up to 20 ppm (A4R)<br>iR-ADV DX C3926i<br>1-sided: Up to 26 ppm (A4, A5, A5R, A6R), Up to 15 ppm (A3), Up to 20 ppm (A4R)<br>iR-ADV DX C3922i<br>1-sided: Up to 22 ppm (A4, A5, A5R, A6R), Up to 15 ppm (A3), Up to 20 ppm (A4R)  |
| <b>Interface Connection</b>              | <b>NETWORK</b><br>Standard: 1000Base-T/100Base-TX/10Base-T,<br>Optional: Wireless LAN (IEEE 802.11 b/g/n)<br><b>OTHERS</b><br>Standard: USB 2.0 (Host) x1, USB 3.0 (Host) x1,<br>USB 2.0 (Device) x1;<br>Optional: Serial Interface, Copy Control Interface  | <b>First-Copy-Out Time (A4, BW/CL)</b>             | iR-ADV DX C3935i: Approx. 5.5/7.4 seconds or less<br>iR-ADV DX C3930i/C3926i/C3922i: Approx. 6.1/8.4 seconds or less  |
| <b>Paper Supply Capacity (A4, 80gsm)</b> | Standard: 1200 sheets<br>100-sheet Multi-purpose tray<br>550-sheet Paper cassette x 2,<br>Maximum: 2,300 sheets (with Cassette Feeding Unit-AW1)   | <b>Copy resolution (dpi)</b>                       | 600 x 600   |
| <b>Paper output capacity (A4, 80gsm)</b> | Standard: 250 sheets<br>Maximum: 3,450 sheets (with Staple Finisher-AE1 or Booklet Finisher-AE1 and Copy Tray-T2)  | <b>Multiple Copies</b>                             | Up to 999 copies  |
| <b>Finishing capabilities</b>            | Collate, Group, Offset, Staple, Saddle Stitch, Hole Punch, Eco Staple, Staple On Demand<br>* Finishing capabilities vary depending on the options connected.   | <b>Copy Density</b>                                | Automatic or Manual (9 Levels)  |
| <b>Supported media types</b>             | Multi-purpose tray: Thin, Plain, Heavy*, Recycled, Coated*, Color, Tracing, Bond, Transparency, Label, Pre-punched, Letterhead, Envelope<br>* SRA3 is unsupported for Coated (257-300gsm) and Heavy (257-300gsm) paper.<br>Upper Cassette: Thin, Plain, Heavy, Recycled, Color, Bond, Transparency, Pre-punched, Letterhead, Envelope<br>Lower Cassette: Thin, Plain, Heavy, Recycled, Color, Bond, Transparency, Pre-punched, Letterhead, Envelope*<br>* Envelope Feeder Attachment A (standard) is required.   | <b>Magnification</b>                               | Variable zoom: 25% to 400% (1% Increments)<br>Preset reduction/enlargement: 25%, 50%, 70%, 100%(1:1), 141%, 200%, 400%  |
| <b>Supported media sizes</b>             | Multi-purpose tray:<br>Standard size: SRA3, A3, A4, A4R, A5, A5R, A6R, B4, B5, B5R<br>Custom size: 98.4 x 139.7 mm to 320.0 x 457.2 mm<br>Free size: 100.0 x 148.0 mm to 304.8 x 457.2 mm<br>Envelopes: COM10 No.10, Monarch, ISO-C5, DL<br>Envelope custom size: 98.0 x 98.0 mm to 320.0 x 457.2 mm<br>Upper Cassette:<br>Standard size: A4, A5, A5R, A6R, B5<br>Custom Size: 105.0 x 148.0 mm to 297.0 x 215.9 mm<br>Envelopes: ISO-C5<br>Lower Cassette:<br>Standard size: A3, A4, A4R, A5, A5R, A6R, B4, B5, B5R<br>Custom Size: 105.0 x 148.0 mm to 304.8 x 457.2 mm<br>Envelopes*: COM10 No.10, Monarch, DL<br>* Envelope Attachment A (standard) is required. | <b>Copy Features</b>                               | Preset R/E Ratios by Area, Two-Sided, Density Adjustment, Original Type Selection, Interrupt Mode, Book to Two Pages, Two-sided Original, Job Build, N on 1, Add Cover, Insert Sheets, Different Size Originals, Page Numbering, Copy Set Numbering, Sharpness, Erase Frame, Secure Watermark, Print Date, Gutter, Print & Check, Negative/Positive, Repeat Images, Merge Job Blocks, Mirror Image, Store in Mail Box, Copy ID Card, Skip Blank Pages, Free Size Original, Color Mode, Reserved copy, Copy Sample |
| <b>Supported media weights</b>           | Multi-purpose tray: 52 to 300 gsm*<br>* SRA3 is unsupported for Coated (257-300gsm) and Heavy (257-300gsm) paper.<br>Upper/Lower Cassette: 52 to 256 gsm<br>Duplex: 52 to 220 gsm  | <b>Copy resolution (dpi)</b>                       | 600 x 600   |
| <b>Warm-up Time</b>                      | Quick Startup Mode: 4 seconds or less*<br>* Time from device power-on to when the copy icon appears and is enabled to operate on the touch panel display.<br>From Sleep Mode: 10 seconds or Less<br>From Power On: 10 seconds or Less*<br>* Time from device power-on, until copy ready (not print reservation)  | <b>Multiple Copies</b>                             | Up to 999 copies  |
| <b>Dimensions (W x D x H)</b>            | With Platen Cover-Y3: 565 x 692 x 788 mm<br>With Single Pass DADF-C1: 565 x 722 x 897 mm<br>With DADF-BA1: 565 x 719 x 891 mm  | <b>Copy Density</b>                                | Automatic or Manual (9 Levels)  |
| <b>Installation Space (W x D)</b>        | Basic:<br>978 x 1,119 mm (with Single Pass DADF-C1 + right cover open + Multi-purpose tray extension extended + paper cassette open)<br>978 x 1,116 mm (with DADF-BA1 + right cover open + Multi-purpose tray extension extended + Paper cassette open)<br>Fully Configured:<br>1,651 x 1,119 mm (with Single Pass DADF-C1 + Staple Finisher-AE1/Booklet Finisher-AE1 + Copy Tray-T2 extension extended + paper cassette open)<br>1,651 x 1,116 mm (with DADF-BA1 + Staple Finisher-AE1/Booklet Finisher-AE1 + Copy Tray-T2 extension extended + paper cassette open)  | <b>Magnification</b>                               | Variable zoom: 25% to 400% (1% Increments)<br>Preset reduction/enlargement: 25%, 50%, 70%, 100%(1:1), 141%, 200%, 400%  |
| <b>Weight*</b><br>*including toner       | With Platen Cover-Y3: Approx. 71 kg<br>With DADF-BA1: Approx. 78 kg<br>With Single Pass DADF-C1: Approx. 84 kg   | <b>Copy Features</b>                               | Preset R/E Ratios by Area, Two-Sided, Density Adjustment, Original Type Selection, Interrupt Mode, Book to Two Pages, Two-sided Original, Job Build, N on 1, Add Cover, Insert Sheets, Different Size Originals, Page Numbering, Copy Set Numbering, Sharpness, Erase Frame, Secure Watermark, Print Date, Gutter, Print & Check, Negative/Positive, Repeat Images, Merge Job Blocks, Mirror Image, Store in Mail Box, Copy ID Card, Skip Blank Pages, Free Size Original, Color Mode, Reserved copy, Copy Sample |
| <b>PRINT SPECIFICATIONS</b>              |  | <b>SCAN SPECIFICATIONS</b>                         |   |
| <b>Print Speed (BW and CL)</b>           | iR-ADV DX C3935i:<br>1-sided: Up to 35 ppm (A4, A5, A5R, A6R), Up to 17 ppm (A3), Up to 23 ppm (A4R)<br>iR-ADV DX C3930i:<br>1-sided: Up to 30 ppm (A4, A5, A5R, A6R), Up to 15 ppm (A3), Up to 20 ppm (A4R)<br>iR-ADV DX C3926i:<br>1-sided: Up to 26 ppm (A4, A5, A5R, A6R), Up to 15 ppm (A3), Up to 20 ppm (A4R)<br>iR-ADV DX C3922i:<br>1-sided: Up to 22 ppm (A4, A5, A5R, A6R), Up to 15 ppm (A3), Up to 20 ppm (A4R)   | <b>Type</b>  | Standard: Color Platen<br>Optional: Platen Cover-Y3, Single Pass DADF-C1* or DADF-BA1 [2-sided to 2-sided (Automatic with DADF)]<br>* Detect Feeder Multi Sheet Feed is supported.<br>DADF: Duplexing Automatic Document Feeder   |
| <b>Print Resolution (dpi)</b>            | 1,200 x 600,<br>1,200 x 1,200 (half-speed)   | <b>Document Feeder Paper Capacity (80 gsm)</b>     | Single Pass DADF-C1: up to 200 Sheets<br>DADF-BA1: up to 100 Sheets   |
| <b>Page description languages</b>        | Standard: UFR II, PCL6, Adobe® PostScript® 3™  | <b>Acceptable Originals and weights</b>            | Platen: Sheet, Book, and 3-Dimensional Objects<br>Document Feeder media weight:<br>Single Pass DADF-C1:<br>1-sided scanning: 38 to 220 gsm (BW, CL)<br>2-sided scanning: 38 to 220 gsm (BW, CL)<br>*An acceptable weights of A6R or smaller is 50 to 220gsm.<br>DADF-BA1:<br>1-sided scanning: 38 to 128 gsm (BW), 64 to 128 gsm (CL)<br>2-sided scanning: 50 to 128 gsm (BW), 64 to 128 gsm (CL)   |
| <b>Direct Print (RUI)</b>                | Supported file types: PDF, EPS, TIFF/JPEG, and XPS   | <b>Supported media sizes</b>                       | Platen: max. scanning size: 297.0 x 431.8 mm<br>Single Pass DADF-C1:<br>A3, A4, A4R, A5, A5R, A6R, B4, B5, B5R, B6R,<br>Custom size: 69.9 x 139.7 mm to 304.8 x 431.8 mm<br>DADF-BA1:<br>A3, A4, A4R, A5, A5R, B4, B5, B5R, B6,<br>Custom size: 139.7 x 128 mm to 297.0 x 431.8 mm  |
|  |  | <b>Scan Speed (ipm: BW/CL,A4)</b>                  | Single Pass DADF-C1:<br>1-sided Scanning: 135/135 (300 x 300 dpi, send), 80/80 (600 x 600 dpi, copy)<br>2-sided Scanning: 270/270 (300 x 300 dpi, send), 160/90 (600 x 600 dpi, copy)<br>DADF-BA1:<br>1-sided Scanning: 70/70 (300 x 300 dpi, send), 51/51 (600 x 600 dpi, copy)<br>2-sided Scanning: 35/35 (300 x 300 dpi, send), 25.5/25.5 (600 x 600 dpi, copy)<br>Scan for Copy: 600 x 600<br>Scan for Send (Push): 600 x 600 (SMB/FTP/WebDAV/IFAX), (Pull) 600 x 600<br>Scan for Fax: 600 x 600              |
|  |  | <b>Scan Resolution (dpi)</b>                       | 600 x 600   |
|  |  | <b>Pull Scan Specifications</b>                    | Colour Network ScanGear2, For both TWAIN and WIA<br>Supported OS: Windows 10/11/Server 2012/Server 2012 R2/Server 2016/Server 2019/Server 2022  |



# TECHNICAL SPECIFICATIONS

# imageRUNNER ADVANCE DX C3900 Series

|  |   |   |  |
|--|---|---|--|
| <b>Scan Method</b>                         | Push Scan, Pull Scan, Scan to Box, Scan to Advanced Space, Scan to Network, Scan to USB Memory Key, Scan to Mobile device, Scan to cloud (uniFLOW Online/Cloud Connector - optional)  | <b>Document Security</b>                    | Print Security (Secure Print, Encrypted Secure Print, Forced Hold Printing, uniFLOW Secure Print*), Receive Data Security (Confidential Fax In-box Forwarding Received Documents Automatically), Scan Security (Encrypted PDF, Device Signature PDF/XPS, User Signature PDF/XPS, Adobe LiveCycle* Rights Management ES2.5 Integration), BOX Security (Mail Box Password Protected, Advanced Space Access Control), Send Data Security (Setting for requesting password input per transmission, Restricted E-mail/File send functions, Confirming FAX number, Allow/Restrict Fax Driver Transmissions, Allow/Restrict Sending from History, S/MIME Support), Document Tracking (Secure Watermark)<br>*Requires uniFLOW Online/uniFLOW |
| <b>SEND SPECIFICATIONS</b>                 |   | <b>Network Security</b>                     | TLS 1.3, IPsec, IEEE802.1X authentication, WPA3 support, SNMP V3.0, Firewall Functionality (IP/MAC Address Filtering), Dual Network Support (Wired LAN/Wireless LAN, Wired LAN/Wired LAN), Disabling Unused Functions (Enabling/Disabling Protocols/Applications, Enabling/Disabling Remote UI), Enabling/Disabling USB Interface, Communication Line Separation (G3 FAX, USB Port, Advanced Space, Scan and Send -Virus Concerns for E-mail Reception)  |
| <b>Destination</b>                         | Standard: E-mail/Internet FAX (SMTP*), SMB 3.1.1, FTP, WebDAV, Mail Box<br>Optional: Super G3 FAX, IP Fax<br>* OAuth 2.0 authentication method available for Microsoft 365 and Google Workspace.  | <b>Device Security</b>                      | Protecting SSD Data [SSD Data Encryption (FIPS 140-3), SSD Lock], Standard SSD Initialize, Initialize (NIST 800-88 PURGE LEVEL), Trusted Platform Module (TPM 2.0), Job Log Conceal Function, Protecting MFP Software Integrity, Checking MFD Software Integrity & Platform Firmware Resiliency (NIST SP800-193) with Automatic System Recovery (Verify System at Startup, Runtime Intrusion Detection enabled with Trellix Embedded Control), HCD-PP Common Criteria Certification  |
| <b>Address Book</b>                        | LDAP (2,000)/Local (1,600)/Speed dial (200)   | <b>Device Management and Auditing</b>       | Administrator Password, Remote Management Two-factor Authentication, Digital Certificate And Key Management, Audit Log, Cooperating with External Security Audit System (Security Information and Event Management), Image Data Logging, Security Policy Setting   |
| <b>Send resolution (dpi)</b>               | Push: up to 600 x 600<br>Pull: up to 600 x 600  | <b>ENVIRONMENTAL SPECIFICATIONS</b>         |  |
| <b>Communication protocol</b>              | File: FTP (TCP/IP), SMB 3.1.1 (TCP/IP), WebDAV<br>E-mail/I-Fax: SMTP, POP3  | <b>Operating Environment</b>                | Temperature: 10 to 30 °C<br>Humidity: 20 to 80 % RH (Relative Humidity)  |
| <b>File Format</b>                         | Standard: TIFF, JPEG, PDF(Compact, Searchable, Apply policy, Optimize for Web, PDF/A-1b, Trace & Smooth, Encrypted, Device Signature, User Signature), XPS(Compact, Searchable, Device Signature, User Signature), Office Open XML (PowerPoint, Word)   | <b>Power source</b>                         | 220-240V 50/60Hz 5A  |
| <b>Universal Send Features</b>             | Original Type Selection, Two-sided Original, Book to Two Pages, Different-size Originals, Density Adjustment, Sharpness, Copy Ratio, Erase Frame, Job Build, Delayed Send, Preview, Job Done Notice, File Name, Subject/Message, Reply-to, E-mail Priority, TX Report, Original Content Orientation, Skip Blank Originals   | <b>Power consumption</b>                    | Maximum: Approx. 1,500 W<br>Copying (with DADF continuous scan): Approx. 613 W*<br>Standby: Approx. 40.7 W*<br>Sleep mode: Approx. 0.8 W*<br>*Reference value: measured one unit<br>**0.8 W sleep mode is not available in all circumstances due to certain settings.  |
| <b>FAX SPECIFICATIONS</b>                  |   | <b>Power consumption</b>                    | Typical Electricity Consumption (TEC)* :<br>iR-ADV DX C3935i: 0.35 kWh<br>iR-ADV DX C3930i: 0.30 kWh<br>iR-ADV DX C3926i: 0.26 kWh<br>iR-ADV DX C3922i: 0.23 kWh<br>*As per USA Energy Star 3.0  |
| <b>Maximum Number of Connection Lines</b>  | 2   | <b>Noise levels</b>                         | For detailed information relating to Erp:Lot6/26 regulation, please go to:<br><a href="https://www.canon-europe.com/for_work/lot26/">https://www.canon-europe.com/for_work/lot26/</a>  |
| <b>Modem Speed</b>                         | Super G3: 33.6 kbps<br>G3: 14.4 kbps  | <b>Standards</b>                            | Blue Angel   |
| <b>Compression Method</b>                  | MH, MR, MMR, JBIG   | <b>CONSUMABLES</b>                          |  |
| <b>Resolution (dpi)</b>                    | 400 x 400 (Ultra Fine), 200 x 400 (Super Fine), 200 x 200 (Fine), 200 x 100 (Normal)  | <b>Toner Cartridges</b>                     | C-EXV 64 Toner BK/C/M/Y  |
| <b>Sending and Receiving Size</b>          | Sending: A3, A4, A4R, A5*, A5R*, B4, B5*, B5R*<br>Receiving: A3, B4, A4, A4R, A5R, B5, B5R<br>*Sent as A4<br>**Sent as B4 short   | <b>Toner Yield (Estimated @5% Coverage)</b> | C-EXV 64 Toner BK: 38,000 pages<br>C-EXV 64 Toner C/M/Y: 25,500 pages  |
| <b>FAX memory</b>                          | Up to 30,000 pages (2,000 jobs)   | <b>SOFTWARE AND PRINTER MANAGEMENT</b>      |  |
| <b>Speed dials</b>                         | Max. 200  | <b>Tracking and reporting</b>               | Universal Login Manager (ULM)<br>uniFLOW Online*<br>*For more information, please refer to:<br><a href="https://www.canon-europe.com/for_work/lot26/">uniFLOW Online</a>   |
| <b>Group dials/destinations</b>            | Max. 199 dials  | <b>Remote management tools</b>              | iWEMC<br>eMaintenance<br>Content Delivery System   |
| <b>Sequential broadcast</b>                | Max. 256 addresses  | <b>Scanning software</b>                    | Color Network ScanGear 2   |
| <b>Memory backup</b>                       | Yes   | <b>Optimisation tools</b>                   | Canon Driver Configuration Tool  |
| <b>Fax Features</b>                        | Sender's Name (TTI), Selecting the Telephone Line (when sending fax), Direct Send, Delayed Send, Preview, Job Done Notice, TX Report, Interrupt Transmission, Sequential Broadcasting, Password/Subaddress Sending, Confidential Mailbox, 2 on 1 Log  | <b>Platform</b>                             | MEAP (Multifunctional Embedded Application Platform)   |
| <b>STORE SPECIFICATIONS</b>                |   |   |  |
| <b>Box (Number supported)</b>              | 100 User Inboxes,<br>1 Memory RX In-box,<br>50 Confidential Fax Inboxes<br>Maximum 10,000 Pages (2,000 jobs) Stored   |   |  |
| <b>Advanced Space</b>                      | Communication Protocol: SMB or WebDAV<br>Supported Client PC: Windows* 10/11<br>Concurrent Connections (Max.): SMB:64, WebDAV:3   |   |  |
| <b>Advanced Space available disc space</b> | Standard:16 GB<br>(With option: max. 480GB)   |   |  |
| <b>Advanced Space Features:</b>            | Authentication for Advanced Space Log-in, Sort Function, Printing a PDF File with a Password, imageWARE Secure Audit Manager Support, Search, File Preview, Authentication Management, Open to public, URI TX, Backup/Restore   |   |  |
| <b>SECURITY SPECIFICATIONS</b>             |   |   |  |
| <b>Authentication and Access Control</b>   | User Authentication (Picture Login, Picture and PIN Login, Card Login*, Username and Password Login, Function Level Login, Mobile Login), Department ID Authentication (Department ID and PIN Login, Function Level Login), uniFLOW Online** (PIN Login, Picture Login, Picture and PIN Login, Card Login, Card and PIN Login, Username and Password Login, Department ID and PIN Login, Function Level Login), Access Management System (Access Control), Cloud Connector** (PIN Login), Microsoft Entra ID (PIN Login, Card Login), Two-Factor Authentication at LUI/RUI<br>*Card readers are optional, please refer to Hardware Accessories<br>**Subscription required |   |  |



# TECHNICAL SPECIFICATIONS

# imageRUNNER ADVANCE DX C3900 Series

|                                  |  |                                      |  |
|----------------------------------|--|--------------------------------------|--|
| <b>Document Publishing</b>       | Kofax Power PDF Advanced (optional)  | <b>Booklet Finisher-AE1</b>          | (Includes the above Staple Finisher-AE1 basic staple specifications.)<br>Saddle Stitch paper size: A3, A4R, B4<br>Saddle Stitch Staple Capacity: 20 sheets x 10 sets (52 to 81.4 gsm) (including 1 cover sheet up to 256 gsm)<br>Non Staple Folded Bunch Capacity: up to 3 sheets (52 to 105 gsm)<br>Power supply: From main unit<br>Dimensions (W x D x H): 637 x 623 x 1,021 mm (when the extension tray is extended)<br>Weight: Approx. 33.0 kg (Requires Inner Finisher-L1)<br>Two or Four Holes<br>Acceptable Punch Paper Weight: 52 to 300 gsm<br>Acceptable Punch Paper Size: Two holes A3, A4, A4R, A5, B4, B5, B5R, Four holes A3, A4 |
| <b>PAPER SUPPLY OPTIONS</b>      |  | <b>Inner 2/4 Hole Puncher-D1</b>     | (Requires Inner Finisher-L1)<br>Four Holes<br>Acceptable Punch Paper Weight: 52 to 300 gsm<br>Acceptable Punch Paper Size: Four holes A3, A4, A4R, A5, B4, B5, B5R   |
| <b>Cassette Feeding Unit-AW1</b> | Paper Capacity: 550 sheets x 2 (1,100 sheets) (80 gsm)<br>Paper Type: Thin, Plain, Recycled, Color, Heavy, Bond, Transparency, Pre-punched, Letterhead<br>Paper Size: A3, A4, A4R, A5, A5R, A6R, B4, B5, B5R, Custom Size: 105.0 x 148.0 mm to 304.8 x 457.2 mm<br>Paper Weight: 52 to 256 gsm<br>Power Source: From the Main Unit<br>Dimensions (W x D x H): 565 x 635 x 248 mm<br>Weight: Approx. 16.0 kg<br>*Paper capacity may vary with different paper type/size.  | <b>Inner 4 Hole Puncher-D1</b>       | (Requires either the Staple Finisher-AE1 or Booklet Finisher-AE1)<br>Two or Four Holes<br>Acceptable Punch Paper Weight: 52 to 300 gsm<br>Acceptable Punch Paper Size: Two holes A3, A4, A4R, A5, B4, B5, B5R, Four holes A3, A4   |
| <b>OUTPUT OPTIONS*</b>           |  | <b>2/4 Hole Puncher Unit-A1</b>      | (Requires either the Staple Finisher-AE1 or Booklet Finisher-AE1)<br>Four Holes<br>Acceptable Punch Paper Weight: 52 to 300 gsm<br>Acceptable Punch Paper Size: Two holes A3, A4, A4R, A5, B4, B5, B5R, Four holes A3, A4  |
| <b>Inner 2way Tray-M1</b>        | Tray Capacity (with 80 gsm paper)<br>Upper tray: A4, A5, A5R, A6R, B5, B5R: 85 sheets<br>SRA3, A3, A4R, B4: 40 sheets<br>Lower tray (standard tray): A4, A5, A5R, A6R, B5, B5R: up to 220 sheets<br>SRA3, A3, A4R, B4: up to 100 sheets<br>Paper Weight: 52 to 300 gsm<br>Dimensions (W x D x H): 428 x 405 x 88 mm<br>Weight: 0.7 kg  | <b>4 Hole Puncher Unit-A1</b>        | (Requires either the Staple Finisher-AE1 or Booklet Finisher-AE1)<br>Four Holes<br>Acceptable Punch Paper Weight: 52 to 300 gsm<br>Acceptable Punch Paper Size: Two holes A3, A4, A4R, A5, B4, B5, B5R, Four holes A3, A4  |
| <b>Copy Tray-T2</b>              | Capacity (with 80gsm paper):<br>A4, A5R, B5, B5R: 100 sheets<br>A3, A4R, B4: 65 sheets<br>Dimensions (W x D x H): 442 x 373 x 176 mm (attached to the main unit, when the extension tray is extended)<br>Weight: 0.5 kg  | <b>HARDWARE ACCESSORIES</b>          |  |
| <b>Inner Finisher-L1</b>         | Tray Capacity (with 80gsm paper):<br>Upper Tray: SRA3, A3, A4, A4R, A5, A5R, A6R, B4, B5, B5R: approx. 45 sheets<br>Lower Tray: A4, A5, A5R, B5: approx. 500 sheets<br>SRA3, A3, A4R, B4, B5R: 250 sheets<br>A6R: 30 sheets<br>Envelope: 10 sheets<br>Paper Weight: 52 to 300 gsm<br>Staple Position: Corner, Double<br>Staple Capacity:<br>A4, B5: 50 sheets (52 to 90 gsm)<br>A4R: 40 sheets (52 to 90 gsm)<br>A3, B4: 30 sheets (52 to 90 gsm)<br>Eco Staple:<br>A3, A4, B4, B5: 10 sheets (52 to 64 gsm)<br>8 sheets (65 to 81.4 gsm)<br>6 sheets (82 to 105 gsm)<br>Staple On Demand: approx. 40 sheets (80 gsm)<br>Dimensions (W x D x H): 727 x 525 x 225 mm (attached to the main unit, when the extension tray is extended)<br>Weight: Approx. 9.1 kg   | <b>Card Readers</b>                  | Copy Card Reader-F1<br>Copy Card Reader Attachment-B7<br>IC Card Reader Box for Numeric Keypad-A1  |
| <b>Staple Finisher-AE1</b>       | Tray Capacity (with 80gsm paper):<br>Upper Tray: A4, A5, A5R, A6R, B5: approx. 250 sheets<br>SRA3, A3, A4R, B4, B5R: approx. 125 sheets<br>Lower Tray: A4, A5, A5R, B5: 3,000 sheets<br>SRA3, A3, A4R, B4, B5R: 1,500 sheets<br>A6R: 250 sheets<br>Envelope: Monarch 30 sheets, COM10 No.10, DL, ISO-C5: 100 sheets<br>Paper Weight:<br>Upper Tray: 52 to 256 gsm<br>Lower Tray: 52 to 300 gsm<br>Staple Position: Corner, Double<br>Staple Capacity: A4, B5: 50 sheets (52 to 90 gsm)<br>A4R: 40 sheets (52 to 90 gsm)<br>A3, B4: 30 sheets (52 to 90 gsm)<br>Eco Staple:<br>A3, A4: 10 sheets (52 to 64 gsm)<br>8 sheets (65 to 81.4 gsm)<br>6 sheets (82 to 105 gsm)<br>Staple On Demand: 50 sheets (52 to 90 gsm)<br>Dimensions (W x D x H): 637 x 623 x 1,021 mm (when the extension tray is extended)<br>Weight: Approx. 30.0 kg | <b>Others</b>                        | Single Pass DADF-C1<br>DADF-BA1<br>Platen Cover-Y3<br>Utility Tray-B1<br>Numeric Keypad-A2<br>Instant Stapler-B1 (optional)<br>Media Adjustment Kit-A1   |
|                                  |  | <b>SECURITY OPTIONS</b>              |  |
|                                  |  | <b>Data Security</b>                 | 1TB SSD-A1<br>Memory Mirroring Kit-A1<br>250GB SSD-A1 (usage with Memory Mirroring Kit-A1)   |
|                                  |  | <b>SYSTEM AND CONTROLLER OPTIONS</b> |  |
|                                  |  | <b>Print Accessories</b>             | PCL International Font Set-A<br>Barcode Printing Kit-D1  |
|                                  |  | <b>Barcode Printing</b>              | Copy Control Interface Kit-A1<br>Serial Interface Kit-K3<br>Wireless LAN Board-F1  |
|                                  |  | <b>System Accessories</b>            | Super G3 FAX Board-BH1<br>Super G3 2nd Line Fax Board-BH2<br>Remote Fax Kit-A1<br>IP FAX Expansion Kit-B1  |
|                                  |  | <b>Fax Accessories</b>               |  |
|                                  |  | <b>OTHER OPTIONS</b>                 |  |
|                                  |  | <b>Accessibility Accessories</b>     | ADF Access Handle-A1<br>Voice Guidance Kit-G1<br>Voice Operation Kit-D1  |
|                                  |  | <b>Staple Cartridges</b>             | Staple Cartridge-Y1 (2 x 2,000pcs)*<br>* For Booklet Finisher only<br>Staple-P1 (2 x 5,000pcs)   |
|                                  |  | <b>Device Protection</b>             | Antimicrobial Film* - Various Sheets designed to fit the devices most common touch points.<br>*Application by a Service engineer is recommended  |

## Software & Solutions



## Certifications and compatibility



**Canon Ireland**  
3006 Lake Drive  
Citywest, Saggart  
Co. Dublin, Ireland  
Telephone No: 01 2052400  
Facsimile No: 01 2052525  
canon.ie

**Canon (UK) Ltd**  
The Bower  
4 Roundwood Avenue  
Stockley Park  
Uxbridge  
UB11 1AF

**Canon Inc.**  
canon.com  
**Canon Europe**  
canon-europe.com  
English edition  
© Canon Europa N.V., 2024

