

OUTDOOR PHOTOMETRIC REPORT

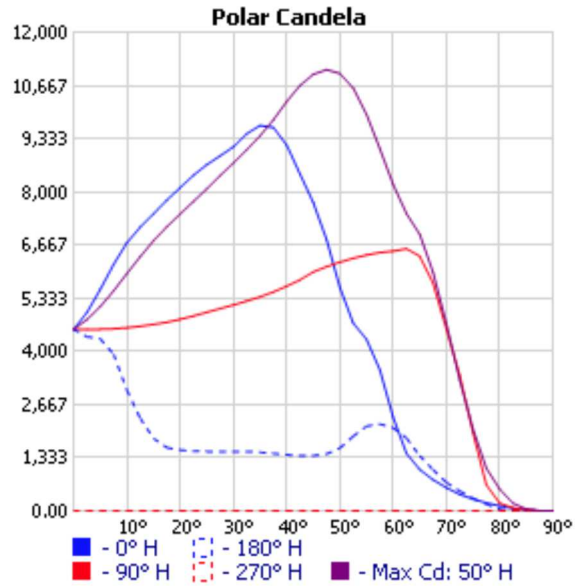
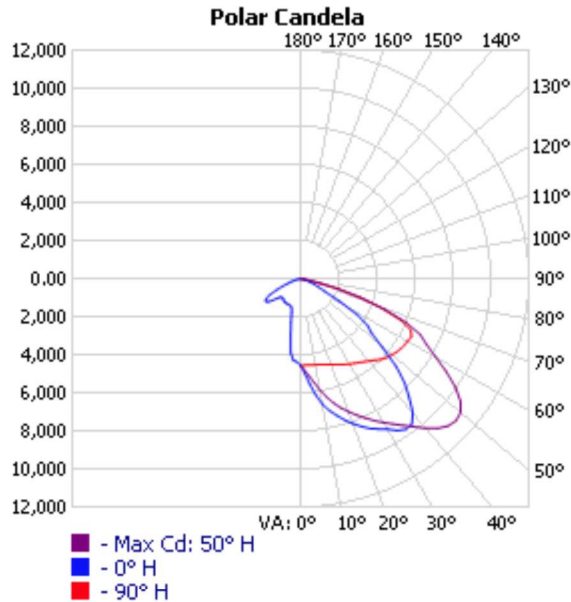
CATALOG: 130222.7L492.491.002



Manufacturer: LUG LIGHT FACTORY
 Test #: 13140
 Test Date: 20-03-2024
 Catalog: 130222.7L492.491.002
 Description: URBINO LED ED D4i 21000lm/740 O73 gray II kl. mod. 002
 Lamp Catalog: LED 4000K
 Lamp Output: 1 lamp, rated Lumens/lamp: 21000
 Input Wattage: 150
 Luminous Opening: Rectangle (L: 0.33M, W: 0.23M)
 Max Cd: 11,067.8 at Horizontal: 50°, Vertical: 47.5°
 CUTOFF CLASS: Cutoff
 Roadway Class: VERY SHORT, TYPE II
 Efficiency: 62.4%

No
Photo
Available

See report notes **

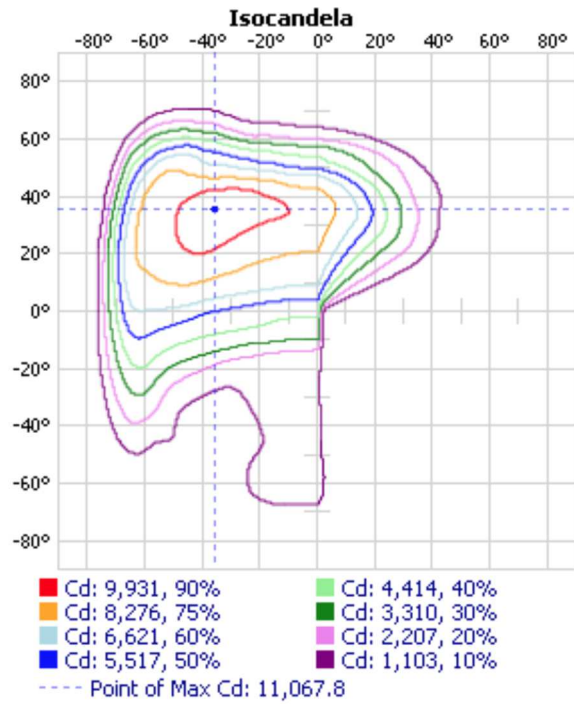
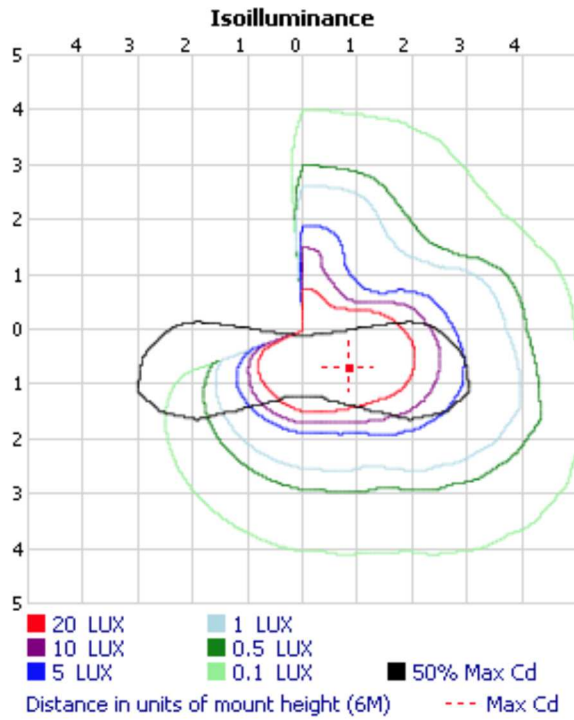


**File does not include sufficient vertical data to properly calculate BUG and LCS upright.

**File does not include upper hemisphere data(90-180) and has Cd > 0 at 90° vertical.

Visual Photometric Tool 1.2.46 copyright 2024, Acuity Brands Lighting.

This Photometric report has been generated using methods recommended by the IESNA. Calculations are based on Photometric data provided by the manufacturer, and the accuracy of this Photometric report is dependent on the accuracy of the data provided. End-user environment and application (including, but not limited to, voltage variation and dirt accumulation) can cause actual Photometric performance to differ from the performance calculated using the data provided by the manufacturer. This report is provided without warranty as to accuracy, completeness, reliability or otherwise. In no event will Acuity Brands Lighting be responsible for any loss resulting from any use of this report.



Zonal Lumen Summary

Zone	Lumens	% Lamp	% Luminaire
0-30	2,629.4	12.5%	20.1%
0-40	4,796.0	22.8%	36.6%
0-60	10,139.4	48.3%	77.4%
60-90	2,958.2	14.1%	22.6%
0-90	13,097.5	62.4%	100%

Lumens Per Zone

Zone	Lumens	% Total
0-10	288.9	2.2%
10-20	863.4	6.6%
20-30	1,477.0	11.3%
30-40	2,166.6	16.5%
40-50	2,692.9	20.6%
50-60	2,650.5	20.2%
60-70	2,111.6	16.1%
70-80	804.4	6.1%
80-90	42.2	0.3%