



3-LUMEN PAPILOTOME

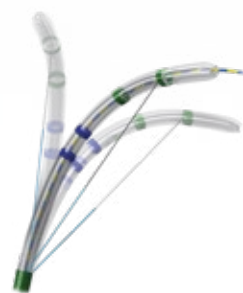
FOR PRECISE WIRE GUIDANCE AND CANNULATION

Positioning, cannulation and resection are the decisive features of a safe and successful papillotomy. The 3-lumen papillotome from MICRO-TECH meets these requirements in every way: Emerging from the working channel in the correct position, the atraumatic tip, tapered to 5 Fr, supports cannulation and the resection is done reliably at the "11 o'clock" marker. Maximum safety during resection

is also provided by optional proximal insulation of the cutting wire. The three lumens for cutting wire, guide wire and contrast media provide for a high level of safety and efficient contrast injection. Thanks to the ergonomic 3-ring grip handle, this papillotome is highly user-friendly and easy to control.

SPECIFIC CHARACTERISTICS

- 3 lumen for guide wire, cutting wire and contrast injection
- Optional insulation of proximal cutting wire
- Cutting direction at 11 o'clock
- Filiform tip, tapered to 5 Fr
- Working length: 2.000 mm
- Outer diameter: 2.5 mm
- Guide wire compatible fully mobile up to 0.035 inch



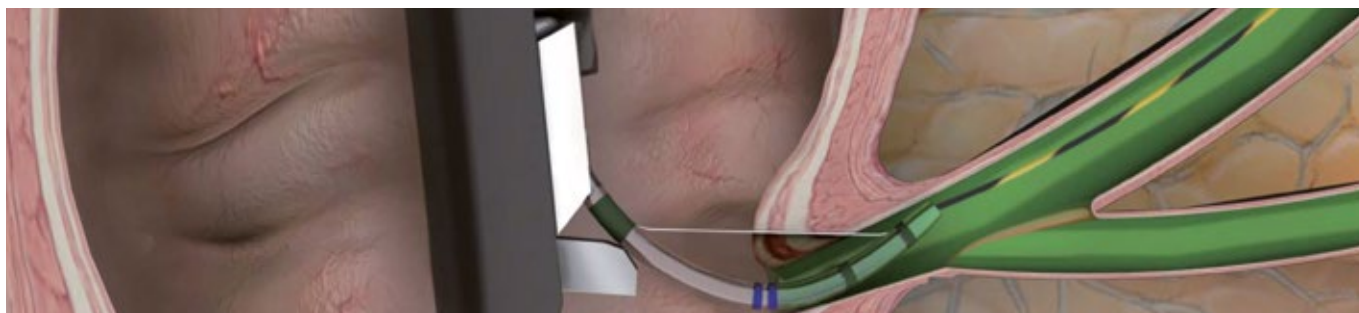
Precise adjustment function



Tip: Precut



Tip: Needle knife



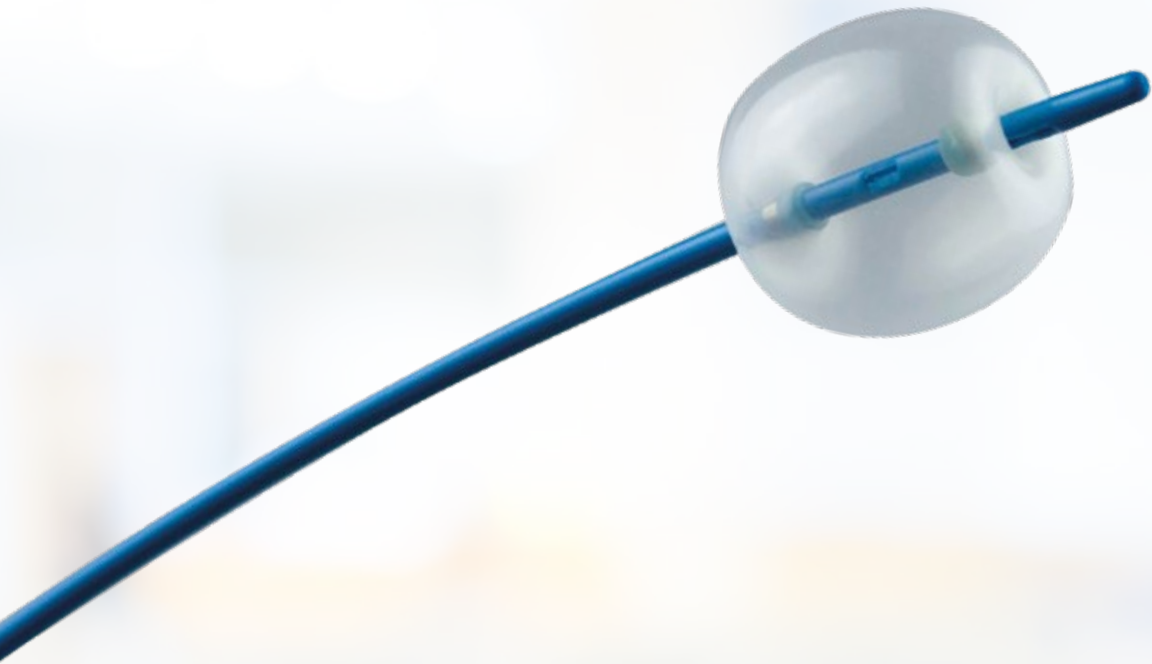
SPECIFICATIONS

REF	Tip length mm	Cutting wire length mm	Partly insulated cutting wire	Preloaded guide wire	Ø working channel mm
PAPILLOTOME, 3-LUMEN, CONE-TIP					
DSP-30020-111111	0	20	No	No	2.8
DSP-30020-111211	0	20	Yes	No	2.8
DSP-30025-111111	0	25	No	No	2.8
DSP-30025-111211	0	25	Yes	No	2.8
DSP-30030-111111	0	30	No	No	2.8
DSP-30030-111211	0	30	Yes	No	2.8
DSP-30220-111111	2	20	No	No	2.8
DSP-30220-111211	2	20	Yes	No	2.8
DSP-30225-111111	2	25	No	No	2.8
DSP-30225-111211	2	25	Yes	No	2.8
DSP-30230-111111	2	30	No	No	2.8
DSP-30230-111211	2	30	Yes	No	2.8
DSP-30520-111111	5	20	No	No	2.8
DSP-30520-111211	5	20	Yes	No	2.8
DSP-30525-111111	5	25	No	No	2.8
DSP-30525-111211	5	25	Yes	No	2.8
DSP-30530-111111	5	30	No	No	2.8
DSP-30530-111211	5	30	Yes	No	2.8
DSP-30020-111121	0	20	No	Yes	2.8
DSP-30020-111221	0	20	Yes	Yes	2.8
DSP-30025-111121	0	25	No	Yes	2.8
DSP-30025-111221	0	25	Yes	Yes	2.8
DSP-30030-111121	0	30	No	Yes	2.8
DSP-30030-111221	0	30	Yes	Yes	2.8
DSP-30220-111121	2	20	No	Yes	2.8
DSP-30220-111221	2	20	Yes	Yes	2.8
DSP-30225-111121	2	25	No	Yes	2.8
DSP-30225-111221	2	25	Yes	Yes	2.8
DSP-30230-111121	2	30	No	Yes	2.8
DSP-30230-111221	2	30	Yes	Yes	2.8
DSP-30520-111121	5	20	No	Yes	2.8
DSP-30520-111221	5	20	Yes	Yes	2.8
DSP-30525-111121	5	25	No	Yes	2.8
DSP-30525-111221	5	25	Yes	Yes	2.8
DSP-30530-111121	5	30	No	Yes	2.8
DSP-30530-111221	5	30	Yes	Yes	2.8
PAPILLOTOME, 3-LUMEN, NEEDLE KNIFE					
DSP-30505-121111	0	5	No	No	2.8
DSP-30505-121211	0	5	Yes	No	2.8
DSP-30507-121111	0	7	No	No	2.8
DSP-30507-121211	0	7	Yes	No	2.8

Recommended guide wires 0.035": MTN-BM 89/45-A (straight), 600358-5 (straight), 600359-5 (J-Tip)

Recommended guide wires 0.025": MTN-BM 63/26-A (straight) and 600384-5 (straight)

Packaging unit: 2 pieces



STONE EXTRACTION BALLOONS

ONE BALLOON, THREE DIAMETERS

MICRO-TECH's vast product range includes high-quality 3-lumen extraction balloons for reliable removal of small stones and sludge from the bile duct. The conical, atraumatic tip of the catheter makes for easy, precise positioning using the two x-ray markers. The cylindrical balloon itself is made of high-quality latex and can be expanded to three different diameters. A specially calibrated single-use

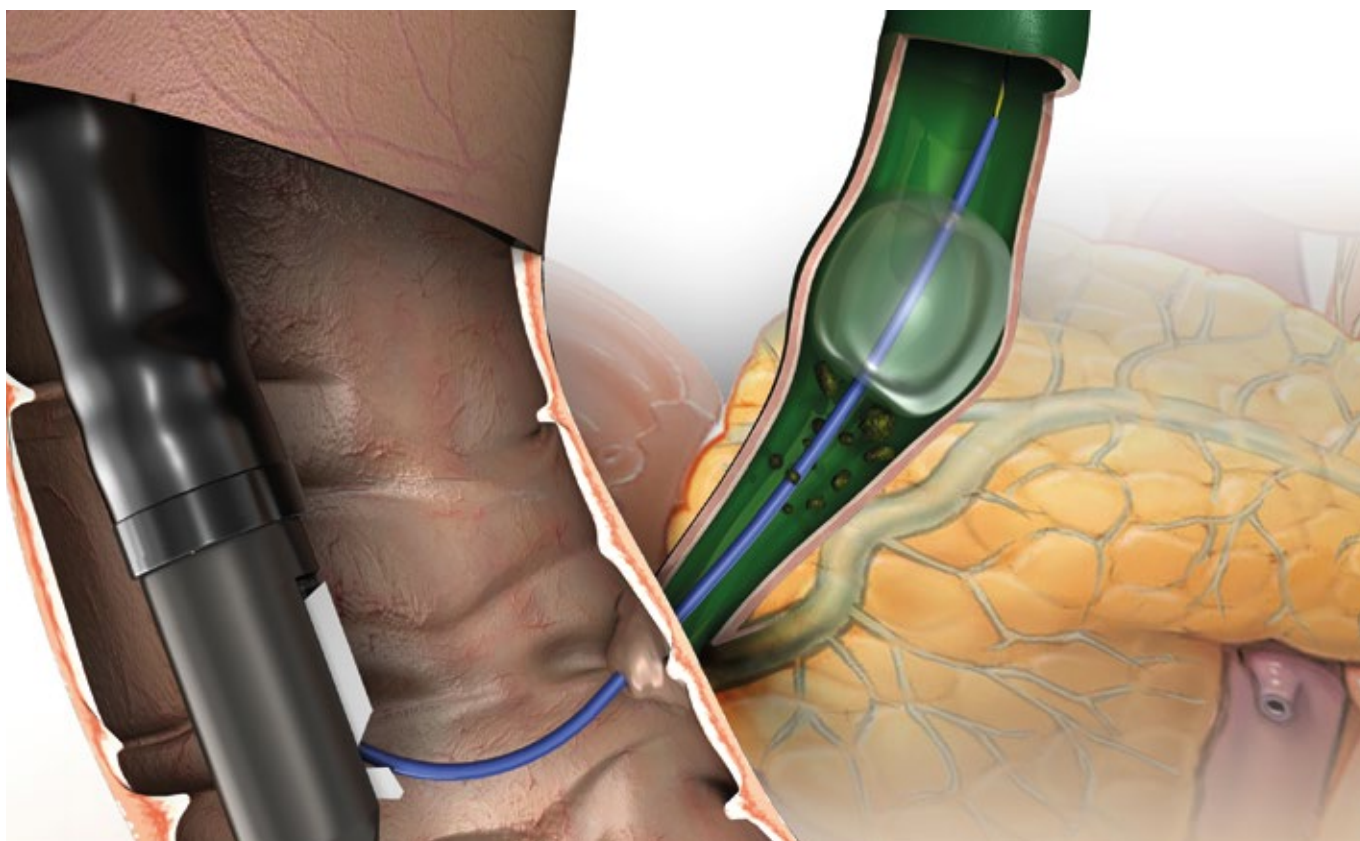
syringe is supplied for each balloon diameter. Following insufflation, the balloon surface lies flat against the bile duct wall, enabling efficient and complete cleaning of the bile duct. A separate lumen for a 0.035 inch guidewire and one for contrast media, provide for ease of handling and contrast injection.

SPECIFIC CHARACTERISTICS

- 3-stage balloons
- One calibrated tip per diameter
- 3 lumens for insufflation, guidewire and contrast agent
- High X-ray visibility (radiopacity)



3-lumen stone extraction balloon from MICRO-TECH

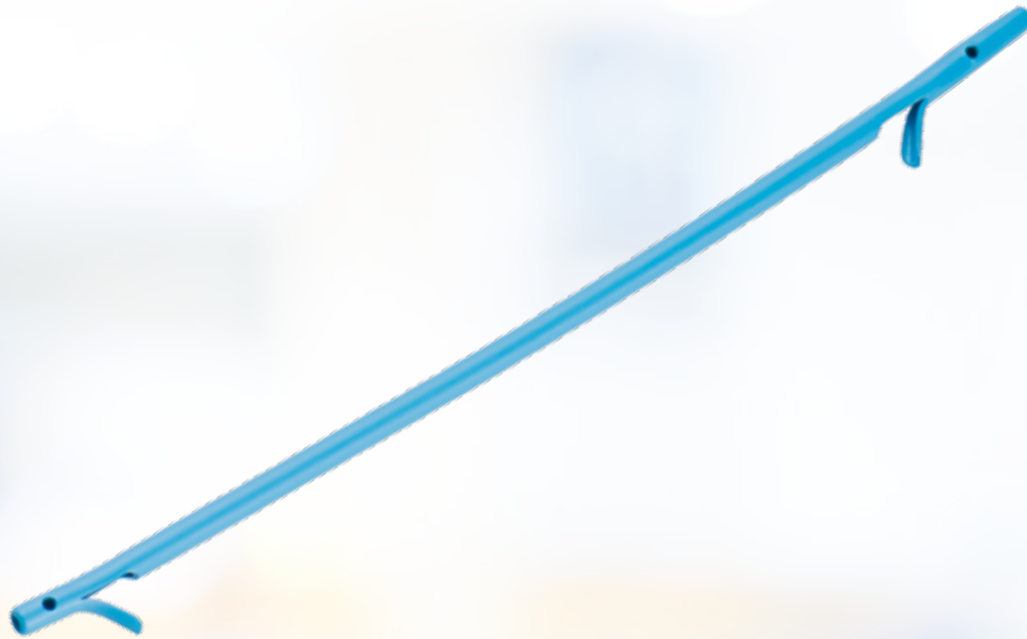


SPECIFICATIONS

REF	Ø inches	Total length mm	Tip length mm	Tip form	Set-up	Covering
CLASSIC GUIDE WIRE						
600382-5	0.035"	4200	130	straight	hydrophilic, radiopaque	extra stiff \pm 0.035"
HYDRO-SLIDE GUIDE WIRE						
MTN-BM-63/45-A-S	0.025"	4500	60	straight	hydrophilic, radiopaque	extra stiff \pm 0.035"
MTN-BM-63/45-A-J-S	0.025"	4500	60	J-form	hydrophilic, radiopaque	extra stiff \pm 0.035"

REF	Injection	Lumen	Catheter Ø Fr.	Balloon Ø mm	Working length mm
STONE EXTRACTION BALLOONS					
SRB-T-9/12/15-20	Above (distal to the balloon)	3	7	9 / 12 / 15	2000
SRB-T-12/15/18-20	Above (distal to the balloon)	3	7	12 / 15 / 18	2000
SRB-T-15/18/21-20	Above (distal to the balloon)	3	7	15 / 18 / 21	2000
SRB-T-9/12/15-20-B	Below (proximal to the balloon)	3	7	9 / 12 / 15	2000
SRB-T-12/15/18-20-B	Below (proximal to the balloon)	3	7	12 / 15 / 18	2000
SRB-T-15/18/21-20-B	Below (proximal to the balloon)	3	7	15 / 18 / 21	2000

Recommended guidewires: MTN-BM 89/45-A (0.035 straight) and 600358-5 (0.035 straight)
 Packaging unit: 1 piece



PLASTIC BILE DUCT STENTS

MAXIMUM DRAINAGE, MAXIMUM HOLD

MICRO-TECH offers a comprehensive range of plastic stents for short and medium-term drainage in the bile duct. The stents are available in different shapes, lengths and diameters. Thus, the ideal stent is available for each indication. The high-quality PE-/PTFE-material of the stents ensures reliable drainage and adapts optimally

to the anatomy of the patient. Flaps at the ends of the stents also ensure a secure hold with minimal migration. For rapid and safe implantation, the stents are available both individually and on pre-loaded systems. In addition, MICRO-TECH also offers introduction-systems in all relevant sizes.

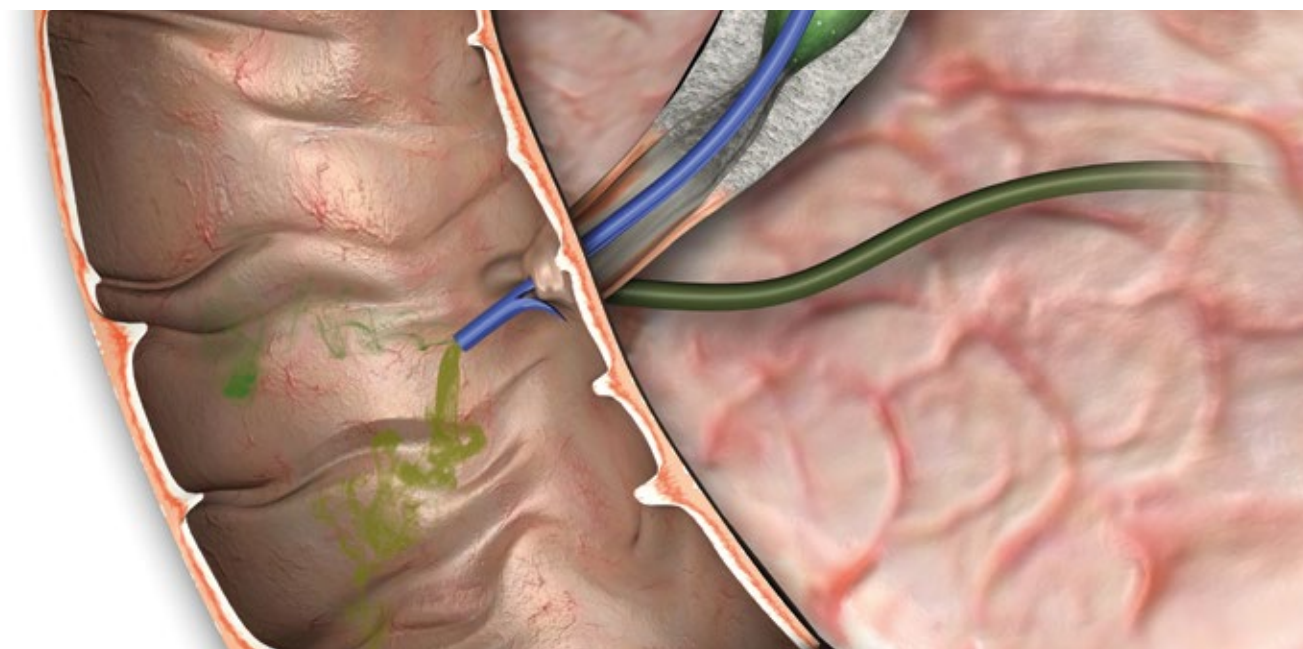
SPECIFIC CHARACTERISTICS

- Different shapes: straight, curved, angled, pigtail, double-pigtail
- Optimum flow rate
- Ideal adaptation to anatomy
- Safe hold, minimal migration
- Available single-packed or pre-loaded on introduction-system
- High x-ray visibility



Pre-loaded stent

System handle



SPECIFICATIONS

STENT STRAIGHT



- Shape: straight
- 2 flaps
- 2 side-holes
- X-ray visible
- Material: PE

Working length	Diameter bile duct prosthesis			
	7 Fr.	8.5 Fr.	10 Fr.	11.5 Fr.
5 cm	BPDS-31114-0705	BPDS-31114-0805	BPDS-31114-1005	BPDS-31114-1105
6 cm	BPDS-31114-0706	BPDS-31114-0806	BPDS-31114-1006	BPDS-31114-1106
7 cm	BPDS-31114-0707	BPDS-31114-0807	BPDS-31114-1007	BPDS-31114-1107
8 cm	BPDS-31114-0708	BPDS-31114-0808	BPDS-31114-1008	BPDS-31114-1108
9 cm	BPDS-31114-0709	BPDS-31114-0809	BPDS-31114-1009	BPDS-31114-1109
10 cm	BPDS-31114-0710	BPDS-31114-0810	BPDS-31114-1010	BPDS-31114-1110
11 cm	BPDS-31114-0711	BPDS-31114-0811	BPDS-31114-1011	BPDS-31114-1111
12 cm	BPDS-31114-0712	BPDS-31114-0812	BPDS-31114-1012	BPDS-31114-1112
13 cm	BPDS-31114-0713	BPDS-31114-0813	BPDS-31114-1013	BPDS-31114-1113
14 cm	BPDS-31114-0714	BPDS-31114-0814	BPDS-31114-1014	BPDS-31114-1114
15 cm	BPDS-31114-0715	BPDS-31114-0815	BPDS-31114-1015	BPDS-31114-1115

SPECIFICATIONS

STENT CURVED



- Shape: 15° curved
- 2 flaps
- 2 side-holes
- X-ray visible
- Material: PE

Working length	Diameter bile duct prosthesis			
	7 Fr.	8.5 Fr.	10 Fr.	11.5 Fr.
5 cm	BPDS-32114-0705	BPDS-32114-0805	BPDS-32114-1005	BPDS-32114-1105
6 cm	BPDS-32114-0706	BPDS-32114-0806	BPDS-32114-1006	BPDS-32114-1106
7 cm	BPDS-32114-0707	BPDS-32114-0807	BPDS-32114-1007	BPDS-32114-1107
8 cm	BPDS-32114-0708	BPDS-32114-0808	BPDS-32114-1008	BPDS-32114-1108
9 cm	BPDS-32114-0709	BPDS-32114-0809	BPDS-32114-1009	BPDS-32114-1109
10 cm	BPDS-32114-0710	BPDS-32114-0810	BPDS-32114-1010	BPDS-32114-1110
11 cm	BPDS-32114-0711	BPDS-32114-0811	BPDS-32114-1011	BPDS-32114-1111
12 cm	BPDS-32114-0712	BPDS-32114-0812	BPDS-32114-1012	BPDS-32114-1112
13 cm	BPDS-32114-0713	BPDS-32114-0813	BPDS-32114-1013	BPDS-32114-1113
14 cm	BPDS-32114-0714	BPDS-32114-0814	BPDS-32114-1014	BPDS-32114-1114
15 cm	BPDS-32114-0715	BPDS-32114-0815	BPDS-32114-1015	BPDS-32114-1115

SPECIFICATIONS

STENT LATERAL ANGLED



- Form: 45° lateral angled
- 2 flaps
- 2 side-holes
- X-ray visible
- Material: PE

Working length	Diameter bile duct prosthesis			
	7 Fr.	8.5 Fr.	10 Fr.	11.5 Fr.
5 cm	BPDS-33114-0705	BPDS-33114-0805	BPDS-33114-1005	BPDS-33114-1105
6 cm	BPDS-33114-0706	BPDS-33114-0806	BPDS-33114-1006	BPDS-33114-1106
7 cm	BPDS-33114-0707	BPDS-33114-0807	BPDS-33114-1007	BPDS-33114-1107
8 cm	BPDS-33114-0708	BPDS-33114-0808	BPDS-33114-1008	BPDS-33114-1108
9 cm	BPDS-33114-0709	BPDS-33114-0809	BPDS-33114-1009	BPDS-33114-1109
10 cm	BPDS-33114-0710	BPDS-33114-0810	BPDS-33114-1010	BPDS-33114-1110
11 cm	BPDS-33114-0711	BPDS-33114-0811	BPDS-33114-1011	BPDS-33114-1111
12 cm	BPDS-33114-0712	BPDS-33114-0812	BPDS-33114-1012	BPDS-33114-1112
13 cm	BPDS-33114-0713	BPDS-33114-0813	BPDS-33114-1013	BPDS-33114-1113
14 cm	BPDS-33114-0714	BPDS-33114-0814	BPDS-33114-1014	BPDS-33114-1114
15 cm	BPDS-33114-0715	BPDS-33114-0815	BPDS-33114-1015	BPDS-33114-1115

SPECIFICATIONS

STENT CENTRAL ANGLED



- Shape: 90° central angled
- 2 flaps
- 2 side-holes
- X-ray visible
- Material: PE

Working length	Diameter bile duct prosthesis			
	7 Fr.	8.5 Fr.	10 Fr.	11.5 Fr.
5 cm	BPDS-34114-0705	BPDS-34114-0805	BPDS-34114-1005	BPDS-34114-1105
6 cm	BPDS-34114-0706	BPDS-34114-0806	BPDS-34114-1006	BPDS-34114-1106
7 cm	BPDS-34114-0707	BPDS-34114-0807	BPDS-34114-1007	BPDS-34114-1107
8 cm	BPDS-34114-0708	BPDS-34114-0808	BPDS-34114-1008	BPDS-34114-1108
9 cm	BPDS-34114-0709	BPDS-34114-0809	BPDS-34114-1009	BPDS-34114-1109
10 cm	BPDS-34114-0710	BPDS-34114-0810	BPDS-34114-1010	BPDS-34114-1110
11 cm	BPDS-34114-0711	BPDS-34114-0811	BPDS-34114-1011	BPDS-34114-1111
12 cm	BPDS-34114-0712	BPDS-34114-0812	BPDS-34114-1012	BPDS-34114-1112
13 cm	BPDS-34114-0713	BPDS-34114-0813	BPDS-34114-1013	BPDS-34114-1113
14 cm	BPDS-34114-0714	BPDS-34114-0814	BPDS-34114-1014	BPDS-34114-1114
15 cm	BPDS-34114-0715	BPDS-34114-0815	BPDS-34114-1015	BPDS-34114-1115

SPECIFICATIONS

PIGTAIL DOUBLE O-SHAPE



- Shape: Pigtail O-Shape
- Double
- 4 side-holes
- X-ray visible
- Material: PE

Working length	Diameter bile duct prosthesis		
	7 Fr.	8.5 Fr.	10 Fr.
5 cm	BPDS-31003-0705	BPDS-31003-0805	BPDS-31003-1005
6 cm	BPDS-31003-0706	-	-
7 cm	BPDS-31003-0707	BPDS-31003-0807	BPDS-31003-1007
8 cm	-	BPDS-31003-0808	-
9 cm	BPDS-31003-0709	-	BPDS-31003-1009
10 cm	BPDS-31003-0710	-	BPDS-31003-1010
11 cm	-	BPDS-31003-08011	BPDS-31003-1011
12 cm	BPDS-31003-0712	-	BPDS-31003-1012
15 cm	BPDS-31003-0715	-	-

SPECIFICATIONS

PIGTAIL DISTAL



- Shape: Pigtail
- Distal
- 2 side-holes
- X-ray visible
- Material: PE

Working length	Diameter bile duct prosthesis	
	8.5 Fr.	10 Fr.
5 cm	BPDS-31196-0805	BPDS-31196-1005
6 cm	BPDS-31196-0806	BPDS-31196-1006
7 cm	BPDS-31196-0807	BPDS-31196-1007
8 cm	BPDS-31196-0808	BPDS-31196-1008
9 cm	BPDS-31196-0809	BPDS-31196-1009
10 cm	BPDS-31196-0810	BPDS-31196-1010
11 cm	BPDS-31196-0811	BPDS-31196-1011
12 cm	BPDS-31196-0812	BPDS-31196-1012
13 cm	BPDS-31196-0813	BPDS-31196-1013
14 cm	BPDS-31196-0814	BPDS-31196-1014
15 cm	BPDS-31196-0815	BPDS-31196-1015

SPECIFICATIONS

PIGTAIL PROXIMAL



- Shape: Pigtail
- Proximal
- 2 side-holes
- X-ray visible
- Material: PE

Working length	Diameter bile duct prosthesis	
	8.5 Fr.	10 Fr.
5 cm	BPDS-31916-0805	BPDS-31916-1005
6 cm	BPDS-31916-0806	BPDS-31916-1006
7 cm	BPDS-31916-0807	BPDS-31916-1007
8 cm	BPDS-31916-0808	BPDS-31916-1008
9 cm	BPDS-31916-0809	BPDS-31916-1009
10 cm	BPDS-31916-0810	BPDS-31916-1010
11 cm	BPDS-31916-0811	BPDS-31916-1011
12 cm	BPDS-31916-0812	BPDS-31916-1012
13 cm	BPDS-31916-0813	BPDS-31916-1013
14 cm	BPDS-31916-0814	BPDS-31916-1014
15 cm	BPDS-31916-0815	BPDS-31916-1015

INTRODUCER-SYSTEMS WITHOUT STENT

SPECIFICATIONS



- One step introducer-system
- X-ray visible

New: Extended guide catheter

REF	Ø catheter	Guide catheter	Introducer length
BPDI-0740/22	7 Fr.	40 cm	220 cm
BPDI-0840/22	8.5 Fr.	40 cm	220 cm
BPDI-1040/22	10 Fr.	40 cm	220 cm
BPDI-1140/22	11.5 Fr.	40 cm	220 cm

INTRODUCER-SYSTEMS WITH PRE-LOADED STENT



- One step introducer-system
- X-ray visible

SPECIFICATIONS

STENT STRAIGHT



- Shape: straight
- 2 flaps
- 2 side-holes
- X-ray visible
- Material: PE

REF	Ø catheter	Stent working/ total length	Introducer length
BPDS-31114-0805/22	8.5 Fr.	5 / 7 cm	220 cm
BPDS-31114-0807/22	8.5 Fr.	7 / 9 cm	220 cm
BPDS-31114-0809/22	8.5 Fr.	9 / 11 cm	220 cm
BPDS-31114-0811/22	8.5 Fr.	11 / 13 cm	220 cm
BPDS-31114-1005/22	10 Fr.	5 / 7 cm	220 cm
BPDS-31114-1007/22	10 Fr.	7 / 9 cm	220 cm
BPDS-31114-1009/22	10 Fr.	9 / 11 cm	220 cm
BPDS-31114-1011/22	10 Fr.	11 / 13 cm	220 cm

SPECIFICATIONS

STENT CURVED



- Shape: 15° curved
- 2 flaps
- 2 side-holes
- X-ray visible
- Material: PE

REF	Ø catheter	Stent working/ total length	Introducer length
BPDS-32114-0805/22	8.5 Fr.	5 / 7 cm	220 cm
BPDS-32114-0807/22	8.5 Fr.	7 / 9 cm	220 cm
BPDS-32114-0809/22	8.5 Fr.	9 / 11 cm	220 cm
BPDS-32114-0811/22	8.5 Fr.	11 / 13 cm	220 cm
BPDS-32114-1005/22	10 Fr.	5 / 7 cm	220 cm
BPDS-32114-1007/22	10 Fr.	7 / 9 cm	220 cm
BPDS-32114-1009/22	10 Fr.	9 / 11 cm	220 cm
BPDS-32114-1011/22	10 Fr.	11 / 13 cm	220 cm