



DILATION BALLOONS

SIMPLY EXPAND RELIABLY AND EFFECTIVELY

The dilation balloons from MICRO-TECH stand for maximum quality. MICRO-TECH produces all the dilation balloons itself – using state-of-the-art European and American production technology. Two x-ray markings indicate the exact working length of the balloon, thereby ensuring its

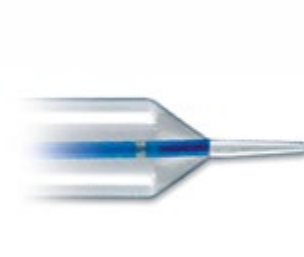
precise positioning. Under application of pressure, the balloon is rapidly filled to acquire its predefined expansion width. Furthermore, the high-pressure design ensures the balloon retains its shape over the entire working length, thereby allowing optimum dilation success.

SPECIFIC CHARACTERISTICS

- Dimensionally stable high pressure design
- 2 X-ray markers on opposite ends to indicate the exact working length of the balloon
- Separate guide wire and insufflation lumens
- Conical shaped catheter tip
- Rapid expansion
- Constant dilation over the entire length
- Guide-wire compatible up to 0.035 inches



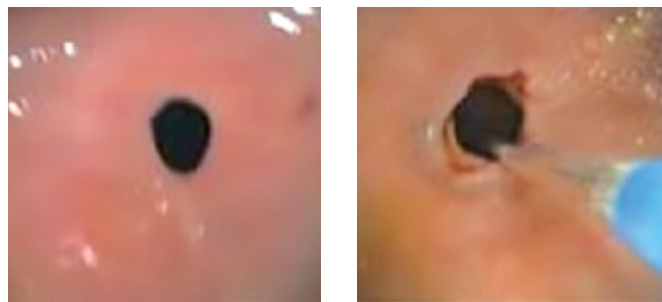
X-ray marking



Conical tip

SUCCESSFUL IN PRACTICAL USE

Stenoses are effectively dilated using the MICRO-TECH dilation balloons. The balloon dilates the stenosis safely and gently and prepares the area to be treated in an optimum manner. The uniform distribution of pressure over the entire working length of the balloon and the outstanding dimensional stability during dilation guarantee excellent therapeutic success over the entire length of the stenosis.



Endoscopic control during dilation therapy

SPECIFICATIONS

REF	Balloon Ø mm	Balloon length mm	Catheter Ø Fr	Catheter length mm	Channel Ø mm	Application
ACHALASIE-BALLOONS						
BDC-26/80-7/10	26	80	7	1000	–	Achalasie
BDC-30/80-7/10	30	80	7	1000	–	Achalasie
BDC-34/80-7/10	34	80	7	1000	–	Achalasie
FIXED WIRE BALLOONS						
FWB-06/80-6/18-M	6-7-8	80	6	1800	2.8	Oesophagus
FWB-08/80-6/18-M	8-9-10	80	6	1800	2.8	Oesophagus
FWB-10/80-6/18-M	10-11-12	80	6	1800	2.8	Oesophagus
FWB-12/80-6/18-M	12-13.5-15	80	6	1800	2.8	Oesophagus
FWB-15/80-6/18-M	15-16.5-18	80	6	1800	2.8	Oesophagus
FWB-18/80-6/18-M	18-19-20	80	6	1800	2.8	Oesophagus

Packaging unit: 1 piece / suitable for guide wires with 0.035"



NETS

SAFELY REMOVE FOREIGN BODIES AND POLYPS

The MT net has been developed for the removal of polyps and foreign bodies and enables the reliable recovery of tissue samples. The net itself consists of a reinforced thread

material, which offers additional safety during recovery. Thanks to its unique dimensional stability and large opening, it facilitates work over several passes

SPECIFIC CHARACTERISTICS

- Large net
- High quality manufacture
- Comfortable 3-ring handle
- Easy and precise opening



Shape stable MT net

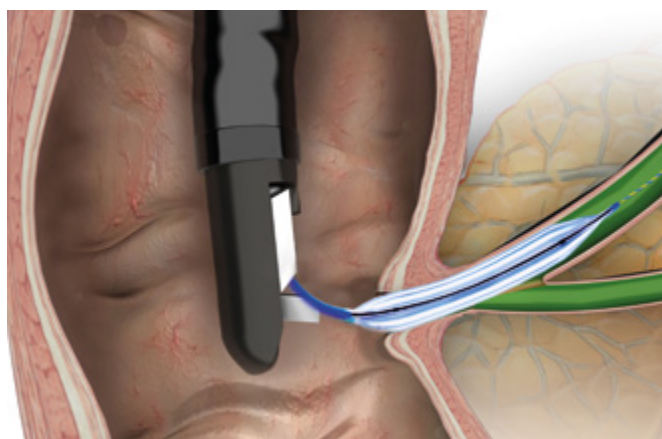
SPECIFICATIONS

REF	Ø net mm	Snare	Working length mm	Ø working channel mm
RETRIEVAL NET				
NT-E-30/23-P	30	Oval	2300	2.8
NT-E-30/16-P	30	Oval	1600	2.8

Packaging unit: 10 pieces

SINGLE-USE INFLATION-INSTRUMENT

Sturdy construction and an ergonomic handle for easy control. With quick-lock mechanism for one-handed deflation, even under full pressure. The clear cylinder and the easy to read scale allow for a close look at the content and the amount. The exact gauge guarantees reliable pressure measurement.

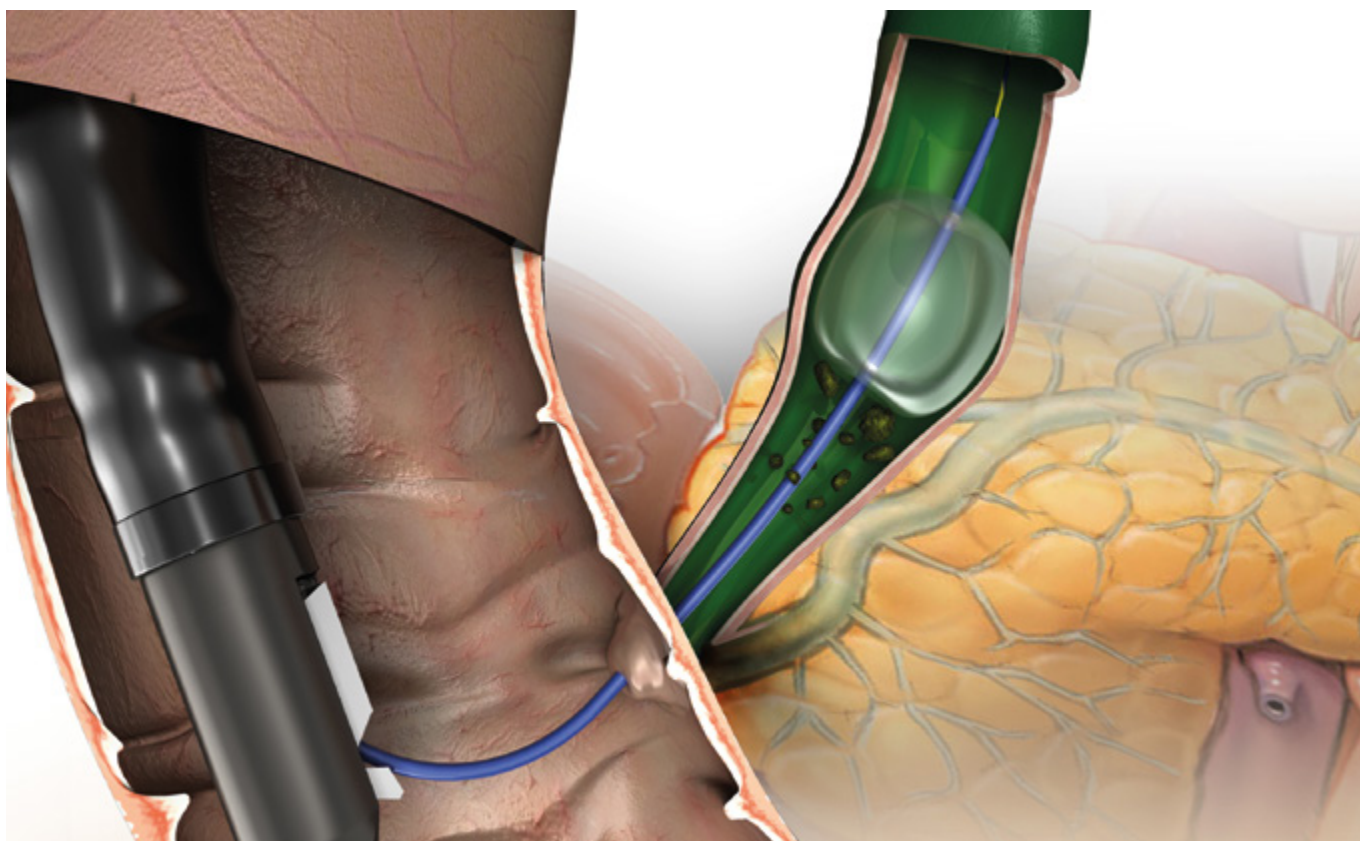


SPECIFICATIONS

REF	Content ml air/liquid	Max. pressure ATM	Feature
SINGLE-USE INFLATION-INSTRUMENT			
BID-15-60-01	60	15	3-way-stopcock

REF	Balloon Ø mm	Balloon 3-stagedilation pressure (atm)	Balloon length mm	Catheter Ø Fr	Catheter length mm
MULTI-STAGE DILATION BALLOONS					
MBD-AS-BB-2	6 / 7 / 8	3 / 6 / 10	30	7	2300
MBD-AM-BA-2	6 / 7 / 8	3 / 6 / 10	55	7	1800
MBD-AM-BB-2	6 / 7 / 8	3 / 6 / 10	55	7	2300
MBD-AL-BA-2	6 / 7 / 8	3 / 6 / 10	80	7	1800
MBD-BS-BB-2	8 / 9 / 10	3 / 5.5 / 9	30	7	2300
MBD-BM-BA-2	8 / 9 / 10	3 / 5.5 / 9	55	7	1800
MBD-BM-BB-2	8 / 9 / 10	3 / 5.5 / 9	55	7	2300
MBD-BL-BA-2	8 / 9 / 10	3 / 5.5 / 9	80	7	1800
MBD-CS-BB-2	10 / 11 / 12	3 / 5 / 8	30	7	2300
MBD-CM-BA-2	10 / 11 / 12	3 / 5 / 8	55	7	1800
MBD-CM-BB-2	10 / 11 / 12	3 / 5 / 8	55	7	2300
MBD-CL-BA-2	10 / 11 / 12	3 / 5 / 8	80	7	1800
MBD-DS-BB-2	12 / 13.5 / 15	3 / 4.5 / 8	30	7	2300
MBD-DM-BA-2	12 / 13.5 / 15	3 / 4.5 / 8	55	7	1800
MBD-DM-BB-2	12 / 13.5 / 15	3 / 4.5 / 8	55	7	2300
MBD-DL-BA-2	12 / 13.5 / 15	3 / 4.5 / 8	80	7	1800
MBD-EM-BA-2	15 / 16.5 / 18	3 / 4.5 / 7	55	7	1800
MBD-EM-BB-2	15 / 16.5 / 18	3 / 4.5 / 7	55	7	2300
MBD-EL-BA-2	15 / 16.5 / 18	3 / 4.5 / 7	80	7	1800
MBD-FM-BA-2	18 / 19 / 20	3 / 4.5 / 6	55	7	1800
MBD-FM-BB-2	18 / 19 / 20	3 / 4.5 / 6	55	7	2300
MBD-FL-BA-2	18 / 19 / 20	3 / 4.5 / 6	80	7	1800

Packaging unit: 1 piece / suitable for guide wires with 0.035"



SPECIFICATIONS

REF	Ø inches	Total length mm	Tip length mm	Tip form	Set-up	Covering
CLASSIC GUIDE WIRE						
600382-5	0.035"	4200	130	straight	hydrophilic, radiopaque	extra stiff \pm 0.035"
HYDRO-SLIDE GUIDE WIRE						
MTN-BM-63/45-A-S	0.025"	4500	60	straight	hydrophilic, radiopaque	extra stiff \pm 0.035"
MTN-BM-63/45-A-J-S	0.025"	4500	60	J-form	hydrophilic, radiopaque	extra stiff \pm 0.035"

REF	Injection	Lumen	Catheter Ø Fr.	Balloon Ø mm	Working length mm
STONE EXTRACTION BALLOONS					
SRB-T-9/12/15-20	Above (distal to the balloon)	3	7	9 / 12 / 15	2000
SRB-T-12/15/18-20	Above (distal to the balloon)	3	7	12 / 15 / 18	2000
SRB-T-15/18/21-20	Above (distal to the balloon)	3	7	15 / 18 / 21	2000
SRB-T-9/12/15-20-B	Below (proximal to the balloon)	3	7	9 / 12 / 15	2000
SRB-T-12/15/18-20-B	Below (proximal to the balloon)	3	7	12 / 15 / 18	2000
SRB-T-15/18/21-20-B	Below (proximal to the balloon)	3	7	15 / 18 / 21	2000

Recommended guidewires: MTN-BM 89/45-A (0.035 straight) and 600358-5 (0.035 straight)

Packaging unit: 1 piece



GUIDE WIRES

THE RELIABLE CHOICE FOR ERCP

All guide wires are manufactured out of bending-resistant and torsion-proof Nitinol. Their hydrophilic coated tips, allow the wires to safely find their way even into areas and stenoses which are hard to reach. This is supported by the wire's high rigidity and controllability. Hence the guide

wires are not only meant for sophisticated stent placements, but are also perfectly suited for ERCP. The high radiopacity of the flexible hydrophilic tip facilitates exact stent placement under visual radiological control.

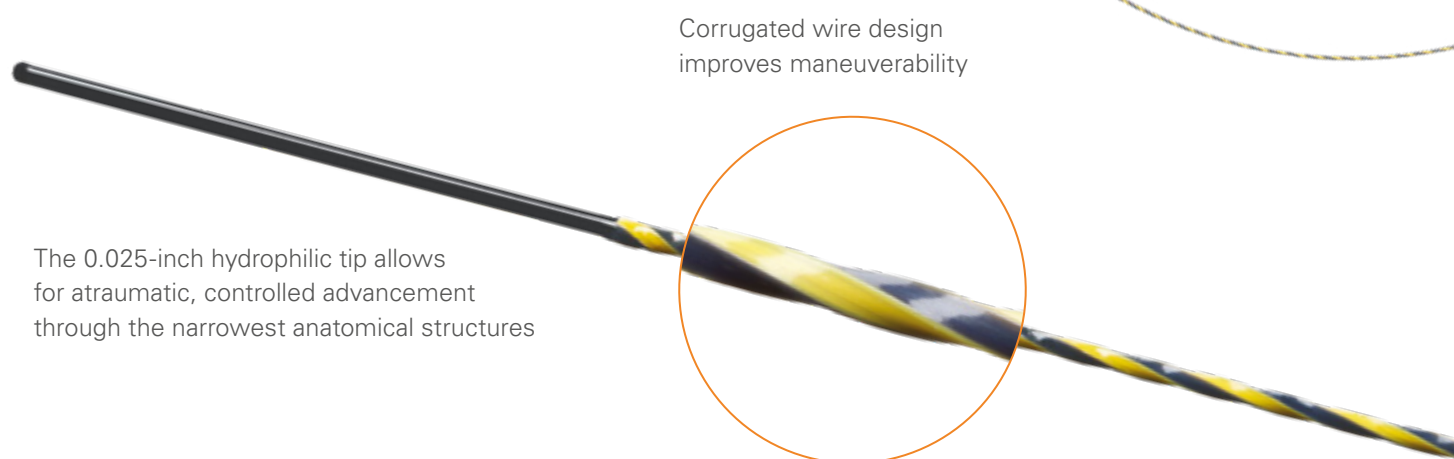
SPECIFIC CHARACTERISTICS

- High level of rigidity and guidability
- Hydrophilic, atraumatic tip
- High level of radiopacity



SPIRATRAX

- Excellent feed force for fast access through stenoses
- High kink resistance for reliable performance
- Simplified handling when instrumenting
- Optimal positionability due to improved stability



Corrugated wire design improves maneuverability

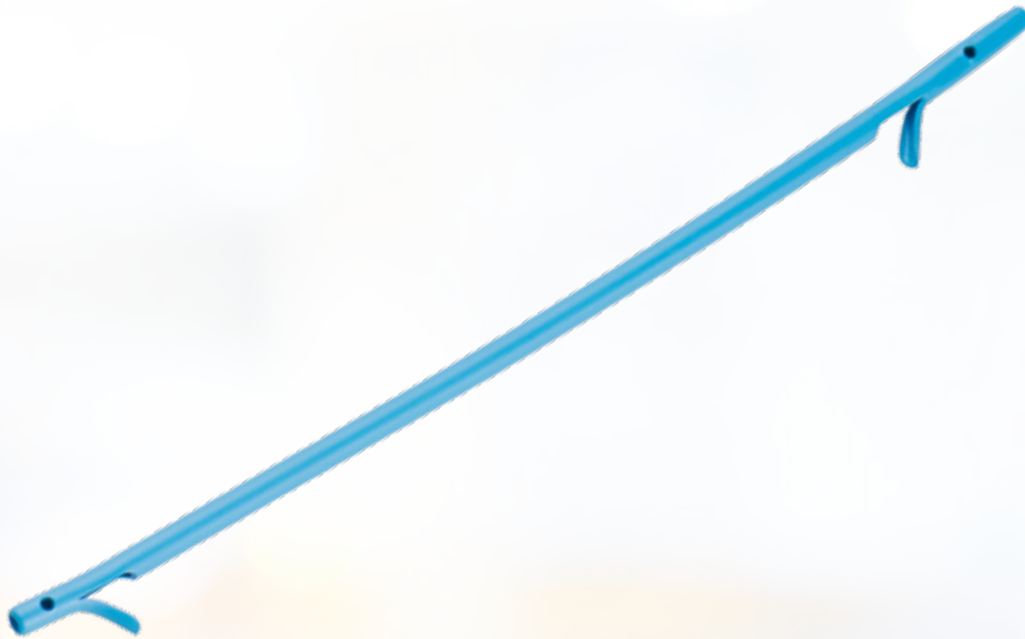
The 0.025-inch hydrophilic tip allows for atraumatic, controlled advancement through the narrowest anatomical structures

The transition to the 0.035-inch shaft ensures optimal guidance and steady support throughout the procedure

SPECIFICATIONS

REF	Ø inches	Total length mm	Tip length mm	Tip form	Set-Up	Feature
SPIRATRAX GUIDE WIRES						
MTN-BM-89/45-A-W	0.025" (0.035")	4500	60	straight	blue-yellow	corrugated
MTN-BM-89/45-A-J-W	0.025" (0.035")	4500	60	J-form	blue-yellow	corrugated
HYDRO-SLIDE GUIDE WIRES						
MTN-BM-89/45-A	0.035"	4500	60	straight	hydrophilic, radiopaque	blue-yellow covering
MTN-BM-89/45-A-J	0.035"	4500	60	J-form	hydrophilic, radiopaque	blue-yellow covering
MTN-BM-63/45-A	0.025"	4500	60	straight	hydrophilic, radiopaque	blue-yellow covering
MTN-BM-63/45-A-S	0.025"	4500	60	straight	hydrophilic, radiopaque	extra stiff \pm 0.035"
MTN-BM-63/45-A-J	0.025"	4500	60	J-form	hydrophilic, radiopaque	blue-yellow covering
MTN-BM-63/45-A-J-S	0.025"	4500	60	J-form	hydrophilic, radiopaque	extra stiff \pm 0.035"
MTN-BM-53/45-A	0.021"	4500	60	straight	hydrophilic, radiopaque	blue-yellow covering
MTN-BM-45/45-A	0.018"	4500	60	straight	hydrophilic, radiopaque	blue-yellow covering
CLASSIC GUIDE WIRES						
600382-5	0.035"	4200	130	straight	hydrophilic, radiopaque	extra stiff \pm 0.035"

Packaging unit: SpiraTrix guide wire: 2 pieces, Hydro-Slide guide wire: 2 pieces, classic guide wire: 1 piece



PLASTIC BILE DUCT STENTS

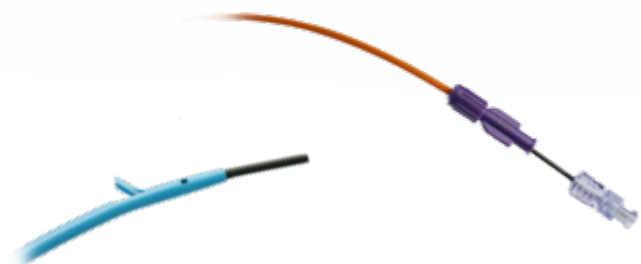
MAXIMUM DRAINAGE, MAXIMUM HOLD

MICRO-TECH offers a comprehensive range of plastic stents for short and medium-term drainage in the bile duct. The stents are available in different shapes, lengths and diameters. Thus, the ideal stent is available for each indication. The high-quality PE-/PTFE-material of the stents ensures reliable drainage and adapts optimally

to the anatomy of the patient. Flaps at the ends of the stents also ensure a secure hold with minimal migration. For rapid and safe implantation, the stents are available both individually and on pre-loaded systems. In addition, MICRO-TECH also offers introduction-systems in all relevant sizes.

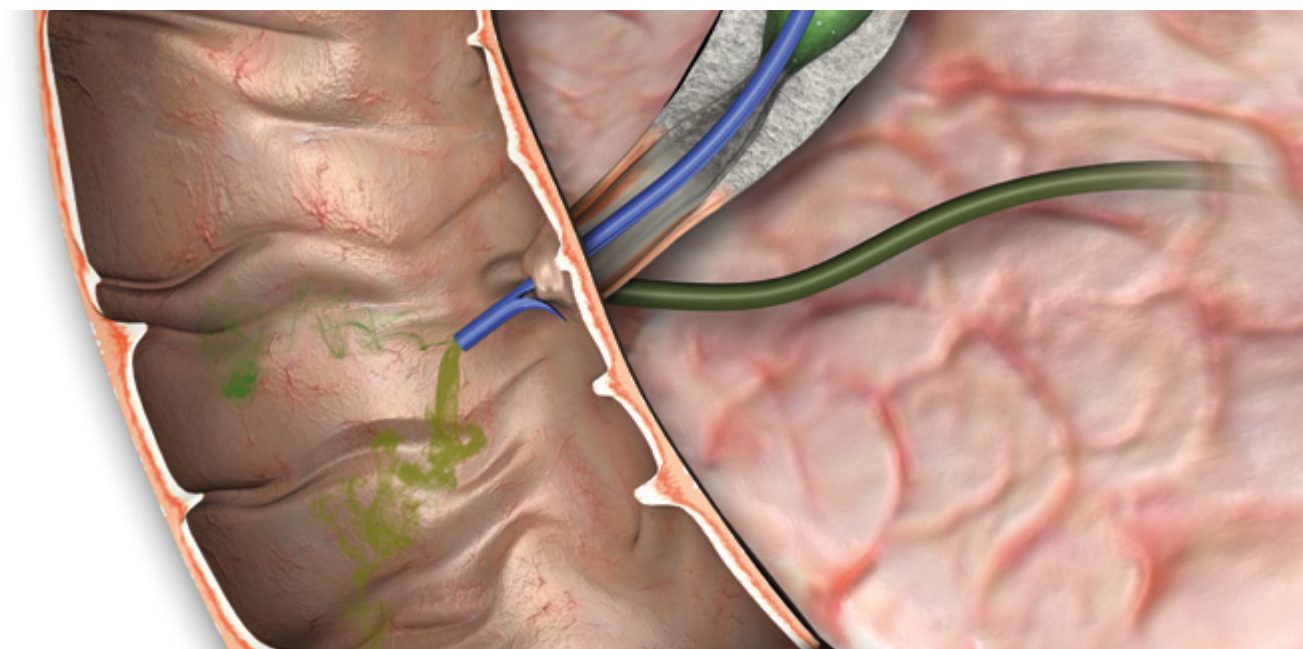
SPECIFIC CHARACTERISTICS

- Different shapes: straight, curved, angled, pigtail, double-pigtail
- Optimum flow rate
- Ideal adaptation to anatomy
- Safe hold, minimal migration
- Available single-packed or pre-loaded on introduction-system
- High x-ray visibility



Pre-loaded stent

System handle



SPECIFICATIONS

STENT STRAIGHT



- Shape: straight
- 2 flaps
- 2 side-holes
- X-ray visible
- Material: PE

Working length	Diameter bile duct prosthesis			
	7 Fr.	8.5 Fr.	10 Fr.	11.5 Fr.
5 cm	BPDS-31114-0705	BPDS-31114-0805	BPDS-31114-1005	BPDS-31114-1105
6 cm	BPDS-31114-0706	BPDS-31114-0806	BPDS-31114-1006	BPDS-31114-1106
7 cm	BPDS-31114-0707	BPDS-31114-0807	BPDS-31114-1007	BPDS-31114-1107
8 cm	BPDS-31114-0708	BPDS-31114-0808	BPDS-31114-1008	BPDS-31114-1108
9 cm	BPDS-31114-0709	BPDS-31114-0809	BPDS-31114-1009	BPDS-31114-1109
10 cm	BPDS-31114-0710	BPDS-31114-0810	BPDS-31114-1010	BPDS-31114-1110
11 cm	BPDS-31114-0711	BPDS-31114-0811	BPDS-31114-1011	BPDS-31114-1111
12 cm	BPDS-31114-0712	BPDS-31114-0812	BPDS-31114-1012	BPDS-31114-1112
13 cm	BPDS-31114-0713	BPDS-31114-0813	BPDS-31114-1013	BPDS-31114-1113
14 cm	BPDS-31114-0714	BPDS-31114-0814	BPDS-31114-1014	BPDS-31114-1114
15 cm	BPDS-31114-0715	BPDS-31114-0815	BPDS-31114-1015	BPDS-31114-1115

SPECIFICATIONS

STENT CURVED



- Shape: 15° curved
- 2 flaps
- 2 side-holes
- X-ray visible
- Material: PE

Working length	Diameter bile duct prosthesis			
	7 Fr.	8.5 Fr.	10 Fr.	11.5 Fr.
5 cm	BPDS-32114-0705	BPDS-32114-0805	BPDS-32114-1005	BPDS-32114-1105
6 cm	BPDS-32114-0706	BPDS-32114-0806	BPDS-32114-1006	BPDS-32114-1106
7 cm	BPDS-32114-0707	BPDS-32114-0807	BPDS-32114-1007	BPDS-32114-1107
8 cm	BPDS-32114-0708	BPDS-32114-0808	BPDS-32114-1008	BPDS-32114-1108
9 cm	BPDS-32114-0709	BPDS-32114-0809	BPDS-32114-1009	BPDS-32114-1109
10 cm	BPDS-32114-0710	BPDS-32114-0810	BPDS-32114-1010	BPDS-32114-1110
11 cm	BPDS-32114-0711	BPDS-32114-0811	BPDS-32114-1011	BPDS-32114-1111
12 cm	BPDS-32114-0712	BPDS-32114-0812	BPDS-32114-1012	BPDS-32114-1112
13 cm	BPDS-32114-0713	BPDS-32114-0813	BPDS-32114-1013	BPDS-32114-1113
14 cm	BPDS-32114-0714	BPDS-32114-0814	BPDS-32114-1014	BPDS-32114-1114
15 cm	BPDS-32114-0715	BPDS-32114-0815	BPDS-32114-1015	BPDS-32114-1115

SPECIFICATIONS

STENT LATERAL ANGLED



- Form: 45° lateral angled
- 2 flaps
- 2 side-holes
- X-ray visible
- Material: PE

Working length	Diameter bile duct prosthesis			
	7 Fr.	8.5 Fr.	10 Fr.	11.5 Fr.
5 cm	BPDS-33114-0705	BPDS-33114-0805	BPDS-33114-1005	BPDS-33114-1105
6 cm	BPDS-33114-0706	BPDS-33114-0806	BPDS-33114-1006	BPDS-33114-1106
7 cm	BPDS-33114-0707	BPDS-33114-0807	BPDS-33114-1007	BPDS-33114-1107
8 cm	BPDS-33114-0708	BPDS-33114-0808	BPDS-33114-1008	BPDS-33114-1108
9 cm	BPDS-33114-0709	BPDS-33114-0809	BPDS-33114-1009	BPDS-33114-1109
10 cm	BPDS-33114-0710	BPDS-33114-0810	BPDS-33114-1010	BPDS-33114-1110
11 cm	BPDS-33114-0711	BPDS-33114-0811	BPDS-33114-1011	BPDS-33114-1111
12 cm	BPDS-33114-0712	BPDS-33114-0812	BPDS-33114-1012	BPDS-33114-1112
13 cm	BPDS-33114-0713	BPDS-33114-0813	BPDS-33114-1013	BPDS-33114-1113
14 cm	BPDS-33114-0714	BPDS-33114-0814	BPDS-33114-1014	BPDS-33114-1114
15 cm	BPDS-33114-0715	BPDS-33114-0815	BPDS-33114-1015	BPDS-33114-1115

SPECIFICATIONS

STENT CENTRAL ANGLED



- Shape: 90° central angled
- 2 flaps
- 2 side-holes
- X-ray visible
- Material: PE

Working length	Diameter bile duct prosthesis			
	7 Fr.	8.5 Fr.	10 Fr.	11.5 Fr.
5 cm	BPDS-34114-0705	BPDS-34114-0805	BPDS-34114-1005	BPDS-34114-1105
6 cm	BPDS-34114-0706	BPDS-34114-0806	BPDS-34114-1006	BPDS-34114-1106
7 cm	BPDS-34114-0707	BPDS-34114-0807	BPDS-34114-1007	BPDS-34114-1107
8 cm	BPDS-34114-0708	BPDS-34114-0808	BPDS-34114-1008	BPDS-34114-1108
9 cm	BPDS-34114-0709	BPDS-34114-0809	BPDS-34114-1009	BPDS-34114-1109
10 cm	BPDS-34114-0710	BPDS-34114-0810	BPDS-34114-1010	BPDS-34114-1110
11 cm	BPDS-34114-0711	BPDS-34114-0811	BPDS-34114-1011	BPDS-34114-1111
12 cm	BPDS-34114-0712	BPDS-34114-0812	BPDS-34114-1012	BPDS-34114-1112
13 cm	BPDS-34114-0713	BPDS-34114-0813	BPDS-34114-1013	BPDS-34114-1113
14 cm	BPDS-34114-0714	BPDS-34114-0814	BPDS-34114-1014	BPDS-34114-1114
15 cm	BPDS-34114-0715	BPDS-34114-0815	BPDS-34114-1015	BPDS-34114-1115

SPECIFICATIONS

PIGTAIL DOUBLE O-SHAPE



- Shape: Pigtail O-Shape
- Double
- 4 side-holes
- X-ray visible
- Material: PE

Working length	Diameter bile duct prosthesis		
	7 Fr.	8.5 Fr.	10 Fr.
5 cm	BPDS-31003-0705	BPDS-31003-0805	BPDS-31003-1005
6 cm	BPDS-31003-0706	-	-
7 cm	BPDS-31003-0707	BPDS-31003-0807	BPDS-31003-1007
8 cm	-	BPDS-31003-0808	-
9 cm	BPDS-31003-0709	-	BPDS-31003-1009
10 cm	BPDS-31003-0710	-	BPDS-31003-1010
11 cm	-	BPDS-31003-08011	BPDS-31003-1011
12 cm	BPDS-31003-0712	-	BPDS-31003-1012
15 cm	BPDS-31003-0715	-	-

SPECIFICATIONS

PIGTAIL DISTAL



- Shape: Pigtail
- Distal
- 2 side-holes
- X-ray visible
- Material: PE

Working length	Diameter bile duct prosthesis	
	8.5 Fr.	10 Fr.
5 cm	BPDS-31196-0805	BPDS-31196-1005
6 cm	BPDS-31196-0806	BPDS-31196-1006
7 cm	BPDS-31196-0807	BPDS-31196-1007
8 cm	BPDS-31196-0808	BPDS-31196-1008
9 cm	BPDS-31196-0809	BPDS-31196-1009
10 cm	BPDS-31196-0810	BPDS-31196-1010
11 cm	BPDS-31196-0811	BPDS-31196-1011
12 cm	BPDS-31196-0812	BPDS-31196-1012
13 cm	BPDS-31196-0813	BPDS-31196-1013
14 cm	BPDS-31196-0814	BPDS-31196-1014
15 cm	BPDS-31196-0815	BPDS-31196-1015

SPECIFICATIONS

PIGTAIL PROXIMAL



- Shape: Pigtail
- Proximal
- 2 side-holes
- X-ray visible
- Material: PE

Working length	Diameter bile duct prosthesis	
	8.5 Fr.	10 Fr.
5 cm	BPDS-31916-0805	BPDS-31916-1005
6 cm	BPDS-31916-0806	BPDS-31916-1006
7 cm	BPDS-31916-0807	BPDS-31916-1007
8 cm	BPDS-31916-0808	BPDS-31916-1008
9 cm	BPDS-31916-0809	BPDS-31916-1009
10 cm	BPDS-31916-0810	BPDS-31916-1010
11 cm	BPDS-31916-0811	BPDS-31916-1011
12 cm	BPDS-31916-0812	BPDS-31916-1012
13 cm	BPDS-31916-0813	BPDS-31916-1013
14 cm	BPDS-31916-0814	BPDS-31916-1014
15 cm	BPDS-31916-0815	BPDS-31916-1015

INTRODUCER-SYSTEMS WITHOUT STENT

SPECIFICATIONS

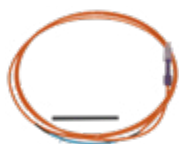


- One step introducer-system
- X-ray visible

New: Extended guide catheter

REF	Ø catheter	Guide catheter	Introducer length
BPDI-0740/22	7 Fr.	40 cm	220 cm
BPDI-0840/22	8.5 Fr.	40 cm	220 cm
BPDI-1040/22	10 Fr.	40 cm	220 cm
BPDI-1140/22	11.5 Fr.	40 cm	220 cm

INTRODUCER-SYSTEMS WITH PRE-LOADED STENT



- One step introducer-system
- X-ray visible

SPECIFICATIONS

STENT STRAIGHT



- Shape: straight
- 2 flaps
- 2 side-holes
- X-ray visible
- Material: PE

REF	Ø catheter	Stent working/ total length	Introducer length
BPDS-31114-0805/22	8.5 Fr.	5 / 7 cm	220 cm
BPDS-31114-0807/22	8.5 Fr.	7 / 9 cm	220 cm
BPDS-31114-0809/22	8.5 Fr.	9 / 11 cm	220 cm
BPDS-31114-0811/22	8.5 Fr.	11 / 13 cm	220 cm
BPDS-31114-1005/22	10 Fr.	5 / 7 cm	220 cm
BPDS-31114-1007/22	10 Fr.	7 / 9 cm	220 cm
BPDS-31114-1009/22	10 Fr.	9 / 11 cm	220 cm
BPDS-31114-1011/22	10 Fr.	11 / 13 cm	220 cm

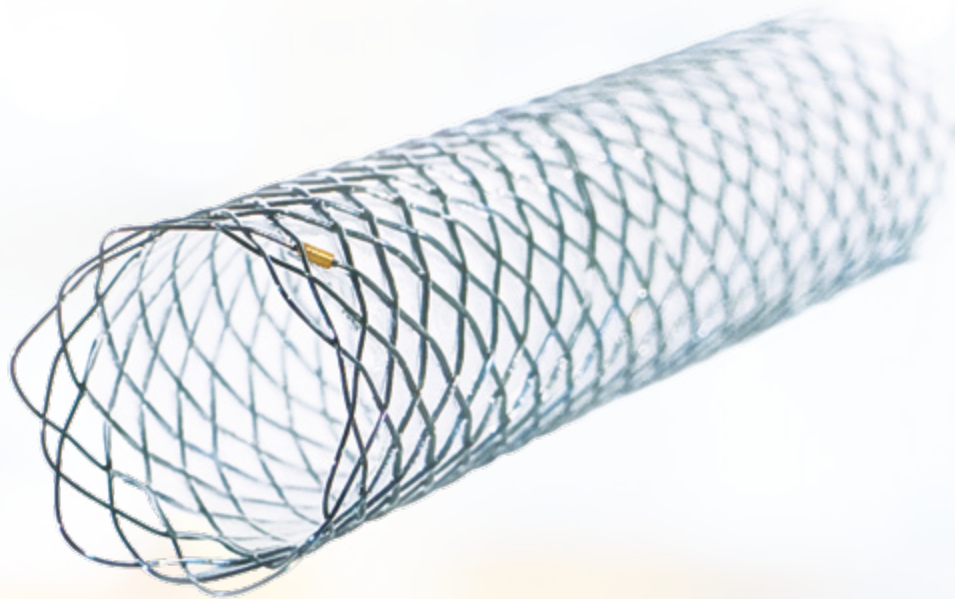
SPECIFICATIONS

STENT CURVED



- Shape: 15° curved
- 2 flaps
- 2 side-holes
- X-ray visible
- Material: PE

REF	Ø catheter	Stent working/ total length	Introducer length
BPDS-32114-0805/22	8.5 Fr.	5 / 7 cm	220 cm
BPDS-32114-0807/22	8.5 Fr.	7 / 9 cm	220 cm
BPDS-32114-0809/22	8.5 Fr.	9 / 11 cm	220 cm
BPDS-32114-0811/22	8.5 Fr.	11 / 13 cm	220 cm
BPDS-32114-1005/22	10 Fr.	5 / 7 cm	220 cm
BPDS-32114-1007/22	10 Fr.	7 / 9 cm	220 cm
BPDS-32114-1009/22	10 Fr.	9 / 11 cm	220 cm
BPDS-32114-1011/22	10 Fr.	11 / 13 cm	220 cm



BILIARY DUCT STENTS

ALWAYS THE IDEAL SOLUTION

With the biliary stents manufactured by MICRO-TECH you will always make the ideal choice to bridge-graft biliary duct stenoses. The high expansion force of the Nitinol wire mesh accounts for an excellent positional stability. The resistant cover prevents the stent from growing into

the tissue. The product range comprises two stent lines and offers a first-class solution that suits all requirements: the classic line and the platinum line. The comprehensive platinum line is especially distinguished by its extraordinary high radiopacity.

SPECIFIC CHARACTERISTICS

- Self-expanding
- Available for TTS and PTCD
- Classic- and Platinum-Line
- Nitinol wire mesh with atraumatic ends
- Release under visual endoscopic control
- Enormous position stability
- Resistant and elastic cover
- High radiopacity
- Guiding wire passable to a maximum of 0.035 inches



X-ray marking



GUIDE WIRES

THE RELIABLE CHOICE FOR ERCP

All guide wires are manufactured out of bending-resistant and torsion-proof Nitinol. Their hydrophilic coated tips, allow the wires to safely find their way even into areas and stenoses which are hard to reach. This is supported by the wire's high rigidity and controllability. Hence the guide

wires are not only meant for sophisticated stent placements, but are also perfectly suited for ERCP. The high radiopacity of the flexible hydrophilic tip facilitates exact stent placement under visual radiological control.

SPECIFIC CHARACTERISTICS

- Non-kinking nitinol wire
- High level of rigidity and guidability
- Hydrophilic, atraumatic tip
- Working length: 4500 mm
- High level of radiopacity



SUCCESSFUL IN PRACTICAL ROUTINE WORK

Bending resistance and rigidity account for the very good feeding properties of guide wires. In daily applications they convince by their precision, which is primarily guaranteed by the efficient transmission of the rotatory and translatory motion all the way to the tip of the wire, as applied by the surgical assistant. This makes it possible to reach into even anatomically difficult passages with ease. In addition, the tip of each wire can be perfectly seen in the X-ray control image, allowing for optimal stent positioning.



Endoscopic view



X-ray

DISPENSER FOR EASY OPERATION

The wire can be easily ejected and retracted by means of this innovative dispenser. Owing to its compact design, the dispenser is handy and easy to operate. Rinsing the wire is also easy and fast when using the dispenser.

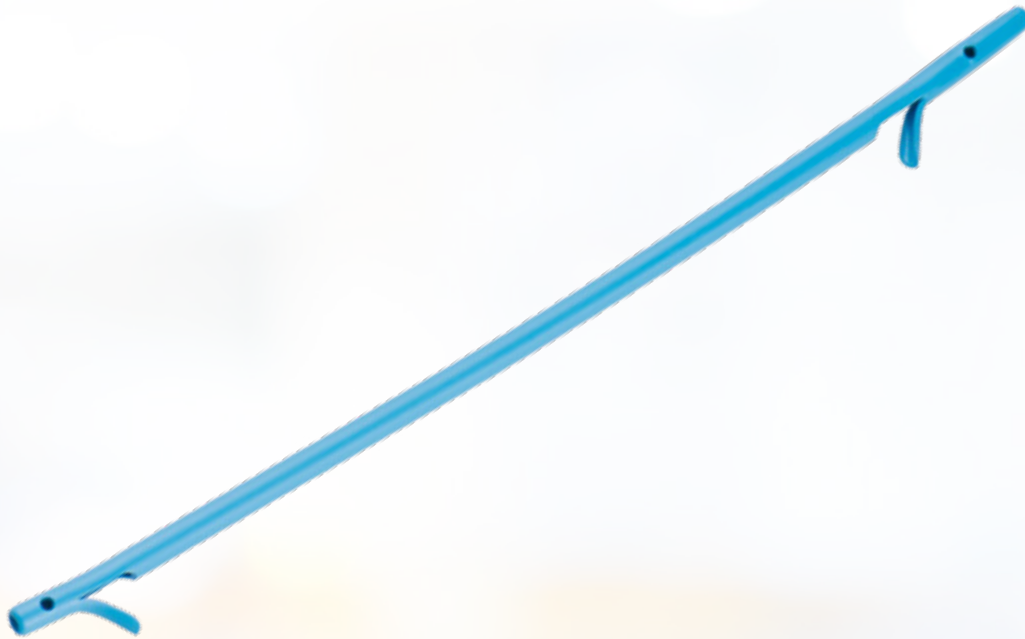


Dispenser guide wires

SPECIFICATIONS

REF	Ø inches	Total length mm	Tip length mm	Tip form	Set-up	Covering
CLASSIC GUIDE WIRE						
600382-5	0.035"	4200	130	straight	hydrophilic, radiopaque	extra stiff \pm 0.035"
HYDRO-SLIDE GUIDE WIRE						
MTN-BM-89/45-A	0.035"	4500	60	straight	hydrophilic, radiopaque	blue-yellow
MTN-BM-89/45-A-J	0.035"	4500	60	J-form	hydrophilic, radiopaque	blue-yellow
MTN-BM-63/45-A	0.025"	4500	60	straight	hydrophilic, radiopaque	blue-yellow
MTN-BM-63/45-A-S	0.025"	4500	60	straight	hydrophilic, radiopaque	extra stiff \pm 0.035"
MTN-BM-63/45-A-J	0.025"	4500	60	J-form	hydrophilic, radiopaque	blue-yellow
MTN-BM-63/45-A-J-S	0.025"	4500	30	J-form	hydrophilic, radiopaque	extra stiff \pm 0.035"
MTN-BM-53/45-A	0.021"	4500	60	straight	hydrophilic, radiopaque	blue-yellow
MTN-BM-45/45-A	0.018"	4500	60	straight	hydrophilic, radiopaque	blue-yellow

Packaging unit: Classic guide wire: 1 piece, Hydro-Slide guide wire: 2 pieces



PLASTIC BILE DUCT STENTS

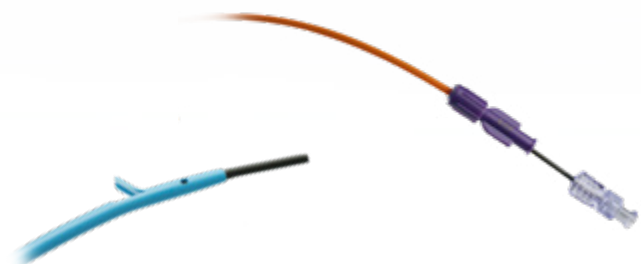
MAXIMUM DRAINAGE, MAXIMUM HOLD

MICRO-TECH offers a comprehensive range of plastic stents for short and medium-term drainage in the bile duct. The stents are available in different shapes, lengths and diameters. Thus, the ideal stent is available for each indication. The high-quality PE-/PTFE-material of the stents ensures reliable drainage and adapts optimally

to the anatomy of the patient. Flaps at the ends of the stents also ensure a secure hold with minimal migration. For rapid and safe implantation, the stents are available both individually and on pre-loaded systems. In addition, MICRO-TECH also offers introduction-systems in all relevant sizes.

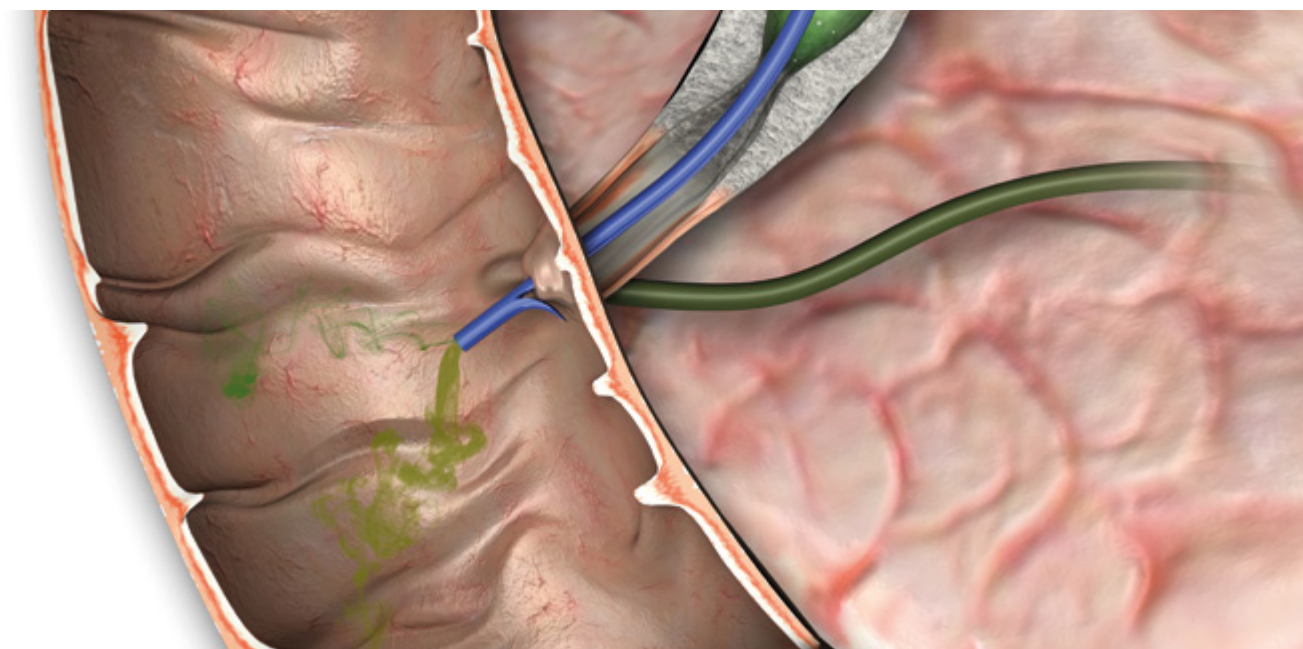
SPECIFIC CHARACTERISTICS

- Different shapes: straight, curved, angled, pigtail, double-pigtail
- Optimum flow rate
- Ideal adaptation to anatomy
- Safe hold, minimal migration
- Available single-packed or pre-loaded on introduction-system
- High x-ray visibility



Pre-loaded stent

System handle



SPECIFICATIONS

STENT STRAIGHT



- Shape: straight
- 2 flaps
- 2 side-holes
- X-ray visible
- Material: PE

Working length	Diameter bile duct prosthesis			
	7 Fr.	8.5 Fr.	10 Fr.	11.5 Fr.
5 cm	BPDS-31114-0705	BPDS-31114-0805	BPDS-31114-1005	BPDS-31114-1105
6 cm	BPDS-31114-0706	BPDS-31114-0806	BPDS-31114-1006	BPDS-31114-1106
7 cm	BPDS-31114-0707	BPDS-31114-0807	BPDS-31114-1007	BPDS-31114-1107
8 cm	BPDS-31114-0708	BPDS-31114-0808	BPDS-31114-1008	BPDS-31114-1108
9 cm	BPDS-31114-0709	BPDS-31114-0809	BPDS-31114-1009	BPDS-31114-1109
10 cm	BPDS-31114-0710	BPDS-31114-0810	BPDS-31114-1010	BPDS-31114-1110
11 cm	BPDS-31114-0711	BPDS-31114-0811	BPDS-31114-1011	BPDS-31114-1111
12 cm	BPDS-31114-0712	BPDS-31114-0812	BPDS-31114-1012	BPDS-31114-1112
13 cm	BPDS-31114-0713	BPDS-31114-0813	BPDS-31114-1013	BPDS-31114-1113
14 cm	BPDS-31114-0714	BPDS-31114-0814	BPDS-31114-1014	BPDS-31114-1114
15 cm	BPDS-31114-0715	BPDS-31114-0815	BPDS-31114-1015	BPDS-31114-1115

INTRODUCER-SYSTEMS WITHOUT STENT

SPECIFICATIONS

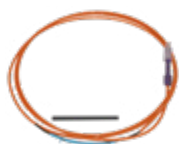


- One step introducer-system
- X-ray visible

New: Extended guide catheter

REF	Ø catheter	Guide catheter	Introducer length
BPDI-0740/22	7 Fr.	40 cm	220 cm
BPDI-0840/22	8.5 Fr.	40 cm	220 cm
BPDI-1040/22	10 Fr.	40 cm	220 cm
BPDI-1140/22	11.5 Fr.	40 cm	220 cm

INTRODUCER-SYSTEMS WITH PRE-LOADED STENT



- One step introducer-system
- X-ray visible

SPECIFICATIONS

STENT STRAIGHT



- Shape: straight
- 2 flaps
- 2 side-holes
- X-ray visible
- Material: PE

REF	Ø catheter	Stent working/ total length	Introducer length
BPDS-31114-0805/22	8.5 Fr.	5 / 7 cm	220 cm
BPDS-31114-0807/22	8.5 Fr.	7 / 9 cm	220 cm
BPDS-31114-0809/22	8.5 Fr.	9 / 11 cm	220 cm
BPDS-31114-0811/22	8.5 Fr.	11 / 13 cm	220 cm
BPDS-31114-1005/22	10 Fr.	5 / 7 cm	220 cm
BPDS-31114-1007/22	10 Fr.	7 / 9 cm	220 cm
BPDS-31114-1009/22	10 Fr.	9 / 11 cm	220 cm
BPDS-31114-1011/22	10 Fr.	11 / 13 cm	220 cm

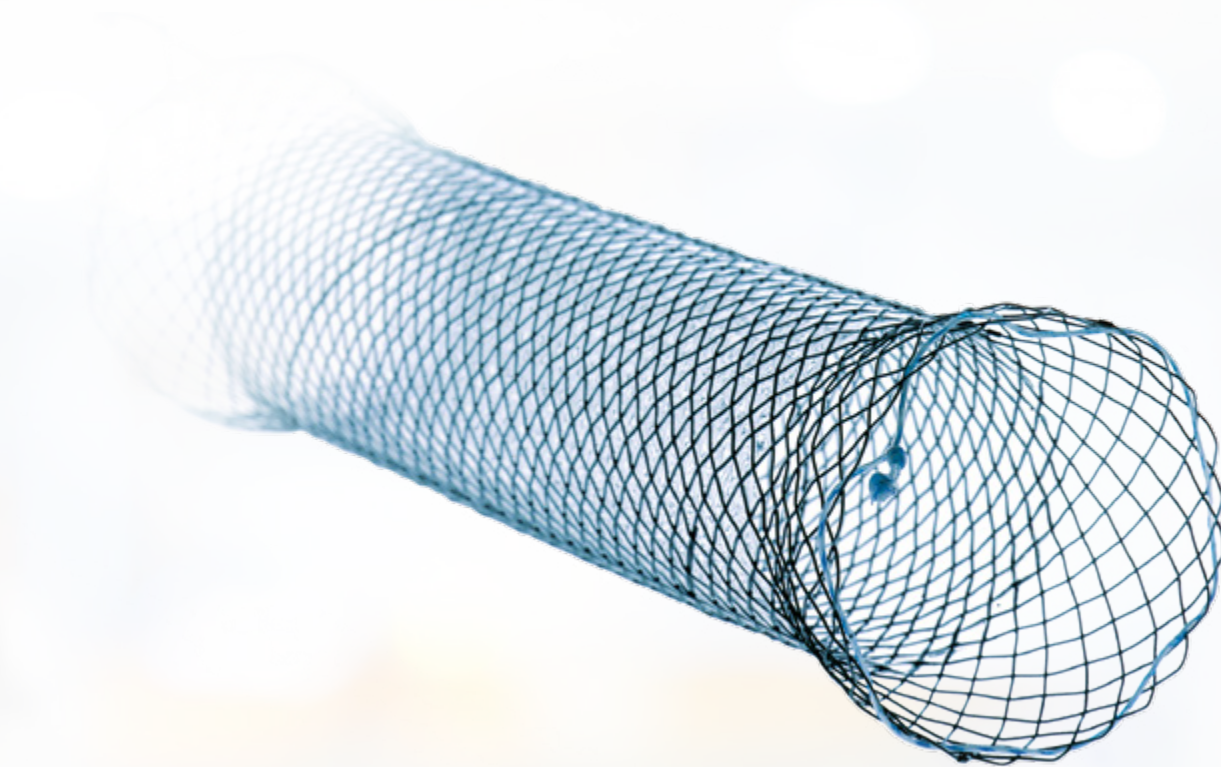
SPECIFICATIONS

STENT CURVED



- Shape: 15° curved
- 2 flaps
- 2 side-holes
- X-ray visible
- Material: PE

REF	Ø catheter	Stent working/ total length	Introducer length
BPDS-32114-0805/22	8.5 Fr.	5 / 7 cm	220 cm
BPDS-32114-0807/22	8.5 Fr.	7 / 9 cm	220 cm
BPDS-32114-0809/22	8.5 Fr.	9 / 11 cm	220 cm
BPDS-32114-0811/22	8.5 Fr.	11 / 13 cm	220 cm
BPDS-32114-1005/22	10 Fr.	5 / 7 cm	220 cm
BPDS-32114-1007/22	10 Fr.	7 / 9 cm	220 cm
BPDS-32114-1009/22	10 Fr.	9 / 11 cm	220 cm
BPDS-32114-1011/22	10 Fr.	11 / 13 cm	220 cm



OESOPHAGUS STENTS (GEN-I)

HIGHEST QUALITY FOR EVERY INDICATION

MICRO-TECH provides you with a comprehensive selection of self-expanding stents for bypassing oesophageal stenoses. The stents are characterised by very high flexibility and are available with and without covering. The

working diameter of the stent is 20, 24 or 28 mm while lengths vary of between 60 and 140 mm. Therefore, the optimum solution is always at hand for every indication.

SPECIFIC CHARACTERISTICS

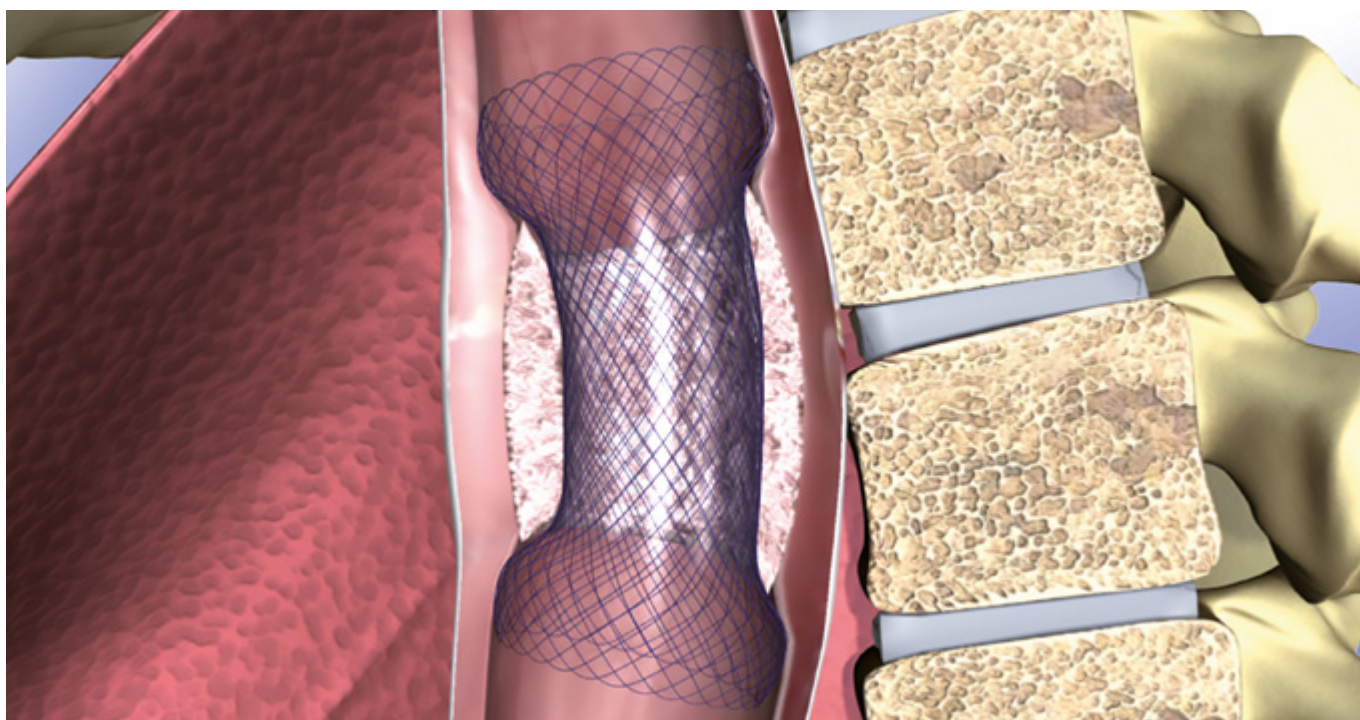
- Self-expanding
- Nitinol mesh with atraumatic ends
- Excellent positional stability
- High radial force
- Resistant and elastic covering
- Fully covered stents available
- Parylene coated
- High radiopacity
- Extraction threads for removal and repositioning
- Guide wire-compatible up to 0.035 inches



X-ray markings



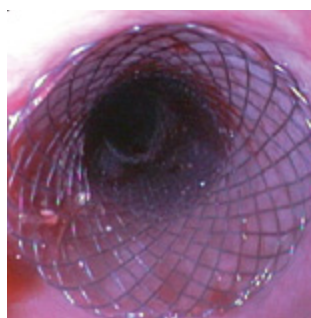
Extraction thread



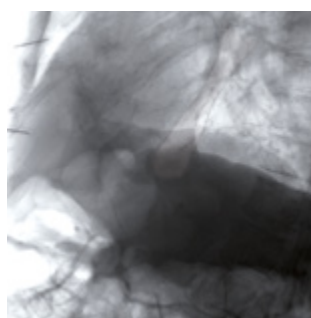
SUCCESSFUL IN PRACTICAL USE

The MICRO-TECH oesophagus stent has already proved its worth thousands of times in practice owing to its reliability, positional stability, excellent handling and the wide selection of lengths.

The stent adapts to the oesophageal wall in the best possible manner thanks to its atraumatic shape and high radial force. Furthermore, the stent possesses excellent radiopacity and can be positioned with good visibility and precision at significant points with the aid of the additional X-ray markings.



View of the proximal tulip



Released under X-ray



Control with contrast medium

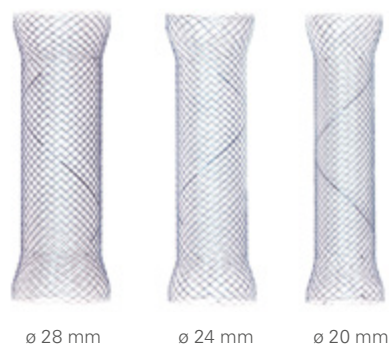
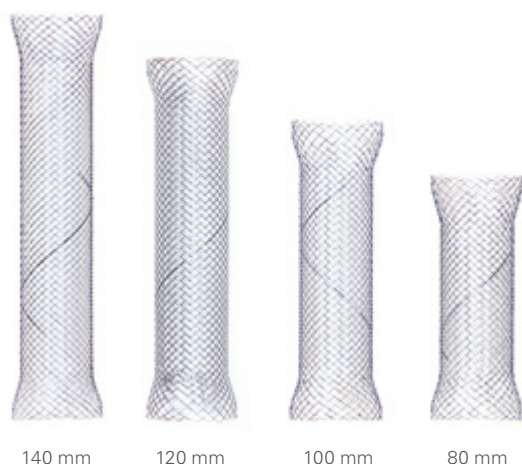


POSITIONALLY STABLE STENT DESIGN

The oesophagus stent is extremely positionally stable. Its self-expanding Nitinol wire adapts itself perfectly to the patient's anatomy and the atraumatic ends ensure a maximum hold.

DIAMETERS UP TO 28 MM

MICRO-TECH always offers you the appropriate solution with the oesophagus stent in three different diameters: 20, 24 or 28 mm in the central section. The stent end is 6 mm wider in each case.

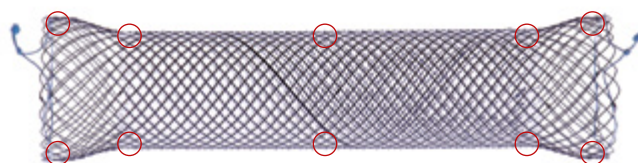


NUMEROUS STANDARD LENGTHS

Depending on the length of the site to be bypassed, you can resort to one of five standard lengths: short stents measuring 60 and 80 mm, medium lengths of 100 and 120 mm and long versions of 140 mm.

RADIOPAQUE MARKERS FOR SECURE INSERTION OF STENTS

All of our esophagus stents are equipped with up to 10 radiopaque markers. They are clearly visible under radiological control and thus enable a secure and precise stent release.



10 X-ray markers on all significant positions

WITH AND WITHOUT COVERING

Depending on the model, the stents have a protective covering. Choose between a complete covering from one stent end to the other, a partial covering in which the ends remain free and a cover-free stent.

INTRODUCER FOR PRECISE RELEASE

All stents are preloaded on the easy-to-manipulate introducer, which allows rapid and precise stent release. The system also allows you to bring the stent into the desired position even when in the oral cavity during release.

POINT OF NO RETURN

A mark on the delivery system shows the “point of no return” at stent placement.

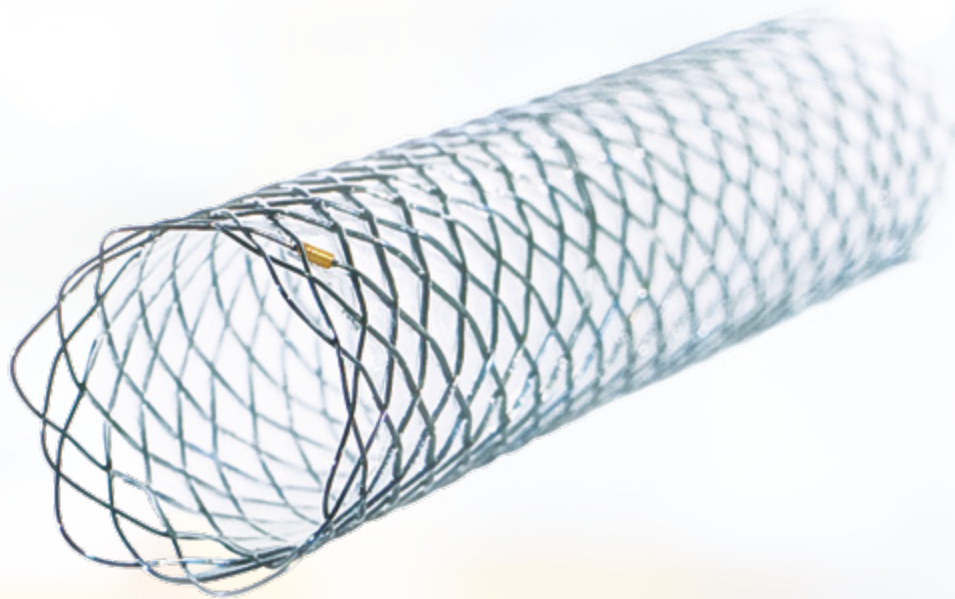


SPECIFICATIONS

REF	Ø centre mm	Ø end mm	Length mm	Covering mm		
STENTS WITH PARTIAL COVERING						
ST01-102.20.060	20	26	60	30		
ST01-102.20.080	20	26	80	50		
ST01-102.20.100	20	26	100	70		
ST01-102.20.120	20	26	120	90		
ST01-102.20.140	20	26	140	110		
ST01-102.24.080	24	30	80	50		
ST01-102.24.100	24	30	100	70		
ST01-102.24.120	24	30	120	90		
ST01-102.24.140	24	30	140	110		
STENTS WITH END-TO-END COVERING						
ST01-103.20.060	20	26	60	60		
ST01-103.20.080	20	26	80	80		
ST01-103.20.100	20	26	100	100		
ST01-103.20.120	20	26	120	120		
ST01-103.20.140	20	26	140	140		
ST01-103.24.060	24	30	60	60		
ST01-103.24.080	24	30	80	80		
ST01-103.24.100	24	30	100	100		
ST01-103.24.120	24	30	120	120		
ST01-103.24.140	24	30	140	140		
ST01-103.28.100	28	34	100	100		
ST01-103.28.120	28	34	120	120		
	Ø mm/Fr	Length mm	Guide wire	RM* ¹	IC* ²	Lock* ³
INTRODUCER SYSTEM						
	8/24	650 (SR)	0.035 inch	2	Yes	Yes

Recommended guide wire: 600375-5

*1 RM – radiopaque markings / *2 IC – irrigation channel / *3 Lock – secures the introducer system during storage, transportation and introduction



BILIARY DUCT STENTS

ALWAYS THE IDEAL SOLUTION

With the biliary stents manufactured by MICRO-TECH you will always make the ideal choice to bridge-graft biliary duct stenoses. The high expansion force of the Nitinol wire mesh accounts for an excellent positional stability. The resistant cover prevents the stent from growing into

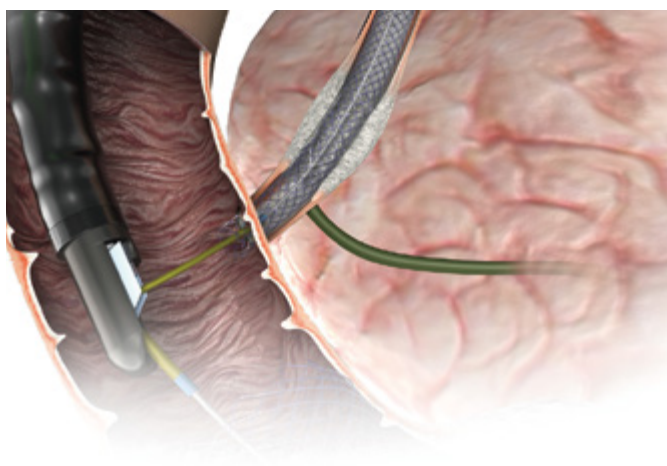
the tissue. The product range comprises two stent lines and offers a first-class solution that suits all requirements: the classic line and the platinum line. The comprehensive platinum line is especially distinguished by its extraordinary high radiopacity.

SPECIFIC CHARACTERISTICS

- Self-expanding
- Available for TTS and PTCD
- Classic- and Platinum-Line
- Nitinol wire mesh with atraumatic ends
- Release under visual endoscopic control
- Enormous position stability
- Resistant and elastic cover
- High radiopacity
- Guiding wire passable to a maximum of 0.035 inches



X-ray marking



CLASSIC-LINE. FIRST-CHOICE FOR ALL APPLICATIONS

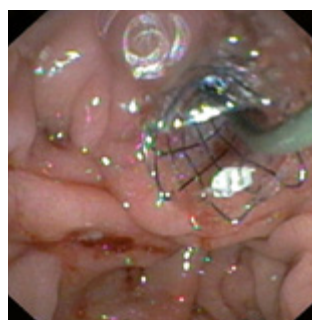
The Classic-Line is perfectly suited for all standard interventions. With two different approaches consisting of TTS and PTC, it perfectly meets every requirement. These stents are made of highly flexible Nitinol wire mesh. Ten additional radiopaque markers account for the good visibility of our Classic-Line stents under fluoroscopy. Our product range comprises uncovered and partially covered stents.

PTCD FOR PERCUTANEOUS ACCESS

In case of therapeutic interventions into the biliary duct, it sometimes occurs that a transpapillary access cannot be accomplished. In such cases MICRO-TECH offers PTC systems (percutaneous transhepatic cholangio drainage) as the ideal solution.

INTRODUCER SYSTEM FOR AN EXACT RELEASE

Additional radiopaque markers on the distal end of the introducer system and on the tip of the pusher catheter provide for additional orientation. In the endoscopic image, the tip of the pusher catheter can be unambiguously and easily distinguished from the proximal end of the stent. The permanent visual endoscopic control of the stent's proximal end considerably facilitates the exact release of the stent.



Removal of the introducer



Endoscopic positional control



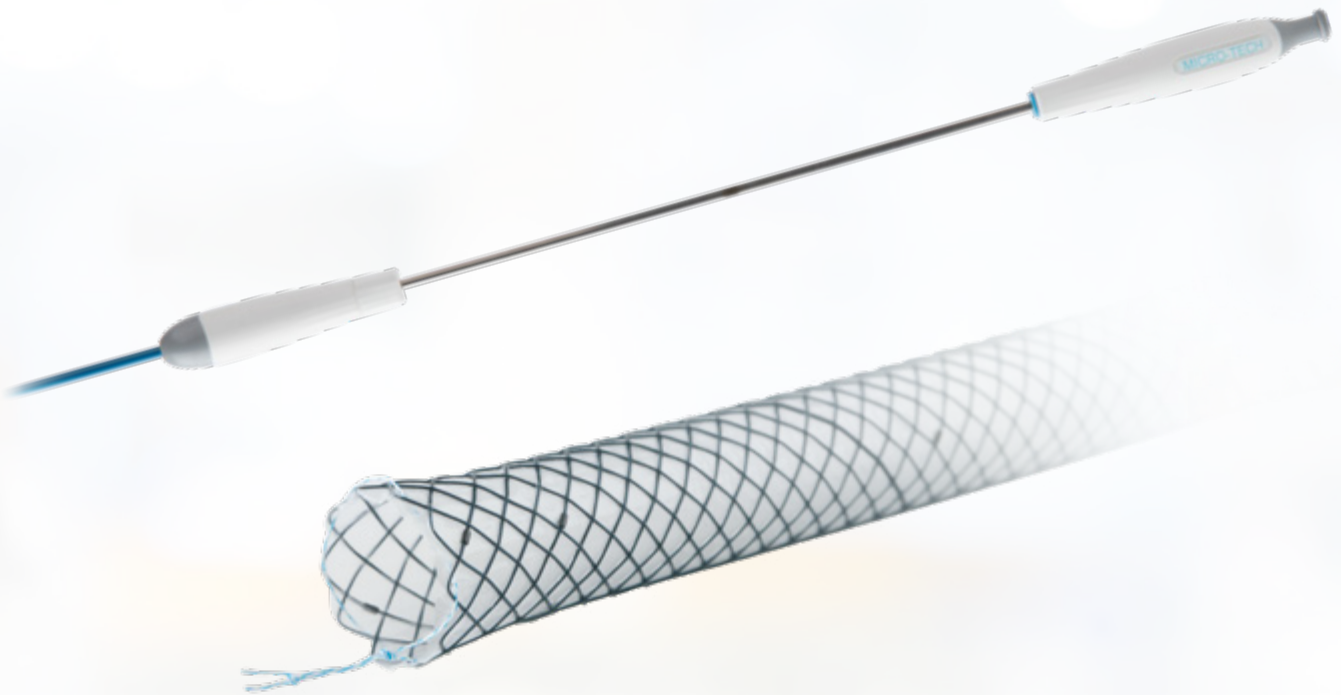
Released stent

TTS STENTS FOR ROUTINE INTERVENTIONS

We offer uncovered as well as partially covered biliary duct stents in three different lengths. All stents can be placed through the working channel of the duodenoscope over the inserted guide wire (TTS – through-the-scope).

TEN PLATINUM RADIOPAQUE MARKERS

In order to achieve improved visibility under X-ray control each stent bears a total of ten radiopaque markers: four markers located at each end, and two in the middle of the stent. The two radiopaque markers in the middle guarantee for the controllability of the stent's optimal position during deployment.



BILIARY-STENT (GEN-II)

HIGH PRECISION IN SLIM DESIGN

The next generation of MICRO-TECH's biliary stents takes the bridging of bile-duct stenosis to a new level. Thanks to its slim design, the system can be pushed almost frictionless through the endoscope and released easily in the bile-duct. A high flexible, specially developed Nitinol wire and the tantalum markers ensure optimal placement under

X-ray vision. The range of stents are available in lengths from 40 to 100 mm as well as fully, partially and uncovered stents. Uncovered and partially covered variants are produced with a "point-of-no-return" that allows to re-insert the stent into the sheath again and make the repositioning much easier.

SPECIFIC CHARACTERISTICS

- Slimmer introducer set
- Point-of-no-return for uncovered and partially covered stents
- Stent system does not need to be flushed before application
- Stent with tantalum marker for good visibility under X-ray



Tantalum X-ray markings



Partly expanded

SPECIFICATIONS

REF	Ø mm	Length mm	Working channel mm	Covering	
STENTS STRAIGHT					
NST03-001-10.040	10	40	3.7	Without	
NST03-001-10.060	10	60	3.7	Without	
NST03-001-10.080	10	80	3.7	Without	
NST03-001-10.100	10	100	3.7	Without	
NST03-002-10.040	10	40	3.7	Partial	
NST03-002-10.060	10	60	3.7	Partial	
NST03-002-10.080	10	80	3.7	Partial	
NST03-002-10.100	10	100	3.7	Partial	
NST03-004-10.040	10	40	3.7	Complete	
NST03-004-10.060	10	60	3.7	Complete	
NST03-004-10.080	10	80	3.7	Complete	
NST03-004-10.100	10	100	3.7	Complete	
STENTS WITH EXTENDED TULIPS					
NST03-111-10.040	10/12	40	3.7	Without	
NST03-111-10.060	10/12	60	3.7	Without	
NST03-111-10.080	10/12	80	3.7	Without	
NST03-111-10.100	10/12	100	3.7	Without	
NST03-112-10.040	10/12	40	3.7	Partial	
NST03-112-10.060	10/12	60	3.7	Partial	
NST03-112-10.080	10/12	80	3.7	Partial	
NST03-112-10.100	10/12	100	3.7	Partial	
NST03-114-10.040	10/12	40	3.7	Complete	
NST03-114-10.060	10/12	60	3.7	Complete	
NST03-114-10.080	10/12	80	3.7	Complete	
NST03-114-10.100	10/12	100	3.7	Complete	
	Ø mm/Fr	Length mm	Guide wire	RM ^{*1}	Lock ^{*2}
INTRODUCER SYSTEM					
	2.5/7.5; 2.8/8.5	1800	0.035 inch	2	Yes

*1 RM – radiopaque markings / *2 Lock – secures the introducer system during transport, storage and insertion

Recommended guide wires:

Straight: MTN-BM-89/45-A, MTN-BM-63/45-A, MTN-BM-53/45-A, MTN-BM-45/45-A.

J-tip: MTN-BM-89/45-A-J, MTN-BM-63/45-A-J.

Number: 6082015CE01

EU Quality Management System Certificate

Conformity Assessment Regulation 2017/745 on Medical devices, Annex IX Chapter I and III

Manufacturer:

Micro-Tech (Nanjing) Co., Ltd.

No.10 Gaoke Third Road, Nanjing National Hi-Tech Industrial Development Zone

210032 Nanjing, Jiangsu Province

P. R. China

SRN ID.: CN-MF-000006950

DEKRA grants the right to use the EC Notified Body Identification Number illustrated below to accompany the CE Marking of Conformity on the products concerned conforming to the required Technical Documentation and meeting the provisions of the EU- Regulation which apply to them:

0344

Supplement to certificate: 6082014CN

Additional certificate: 6126407TD01

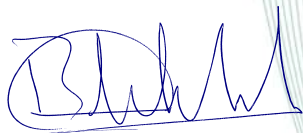
Authorized Representative:

Shanghai International Holding Corp. GmbH (Europe)

Eiffestraße, 80 20537 Hamburg, Germany

DEKRA hereby declares that the above mentioned manufacturer fulfils the relevant requirements of EU Regulation 2017/745, including all subsequent amendments for the above mentioned conformity assessment. The manufacturer/ authorized representative is subject to periodic surveillance as required for the applicable conformity assessment in accordance to Regulation 2017/745.

DEKRA Certification B.V.



B.T.M. Holtus
Managing Director



J.M. McKenzie
Principal Certification Manager

First Issued: **16 September 2022**

Date: **1 August 2023**

Expiry date: **1 September 2027**

© Integral publication of this certificate and adjoining reports is allowed

DEKRA Certification B.V. is Notified Body with ID no 0344

DEKRA Certification B.V. Meander 1051, 6825 MJ Arnhem P.O. Box 5185, 6802 ED Arnhem, The Netherlands
T +31 88 96 83000 www.dekra.nl Company registration 09085396

Number: 6082015CE01

EU Quality Management System Certificate

Conformity Assessment Regulation 2017/745 on Medical devices, Annex IX Chapter I and III

This certificate covers the following device(s) / groups of device(s):

Active non-implantable imaging devices utilising non-ionizing radiation (MDA0202, class IIa)

Device name:

- Single-Use Video Bronchoscopes
- Digital Controllers
- Single-Use Video Pancreaticobiliary Scopes
- PB Digital Controllers

Non-active non-implantable guide catheters, balloon catheters, guidewires, introducers, filters, and related tools (MDN 1203, class IIa)

Device name:

- Sterile Biliary Stone Retrieval Balloon Catheter (including Retrieval Balloon / short-wire compatible)
- Biliary Plastic Stent Introducer (Biliary Plastic Stent Introducer, Biliary Plastic Stent Introducer/ short-wire compatible)
- Dilation Balloon
- Disposable Multistage Dilation Balloon Catheter
- Non Vascular Sterile Hydro Slide Guidewire

Non-active non-implantable instruments (MDN 1208, class IIa)

Device name:

- Extraction Basket (including Extraction Basket/short-wire compatible)
- Nitinol Spiral Extraction Basket (including Nitinol Spiral Extraction Basket/short-wire compatible)
- Injection Needle
- Single-Use SD Biopsy Forceps
- Single-Use Biopsy Forceps

First Issued: 16 September 2022

Date: 1 August 2023

Expiry date: 1 September 2027

© Integral publication of this certificate and adjoining reports is allowed

DEKRA Certification B.V. is Notified Body with ID no 0344

DEKRA Certification B.V. Meander 1051, 6825 MJ Arnhem P.O. Box 5185, 6802 ED Arnhem, The Netherlands
T +31 88 96 83000 www.dekra.nl Company registration 09085396

Number: 6082015CE01

EU Quality Management System Certificate

Conformity Assessment Regulation 2017/745 on Medical devices, Annex IX Chapter I and III

SPHINCTEROTOMES (G030402, class IIb)

Device name:

- Sphincterotome / short-wire compatible
- Sphincterotome

Intended Purpose: The device is intended to be used with endoscope and guidewire for selective cannulation of the biliary ducts and monopolar cutting in sphincterotomy of the Papilla of Vater and/or the Sphincter of Oddi using high-frequency current. The device can also be used to inject contrast medium.

Esophageal Prostheses-Other (P050199, class IIb implantable)

Device name:

- Esophageal Stent

Intended Purpose: The Esophageal Stent implant is indicated for use in the palliative treatment of esophageal stricture caused by malignant neoplasms, cardia stricture, anastomotic stoma stricture, and the esophageal fistula occluding.

Conditions for or limitations to the validity of this certificate:

- N/A

Certificate History

Identification of the Common Specifications and Harmonized Standards complied with are documented within the technical documentation and audit assessments carried out. These are traceable through the DEKRA Certification B.V. Certification Notice. The Certification Notice also identifies the necessary information related to the quality management system of the manufacturer, including facilities.

Revision	Date of Issue certificate	Certification Notice Reference	Action
0	16 September 2022	6082014CN02	First issue
1	20 April 2023	6082014CN04	Revised
2	18 July 2023	6082014CN06	Revised
3	24 July 2023	6082014CN07	Revised
4	1 August 2023	6082014CN08	Revised

First Issued: 16 September 2022

Date: 1 August 2023

Expiry date: 1 September 2027

© Integral publication of this certificate and adjoining reports is allowed

DEKRA Certification B.V. is Notified Body with ID no 0344

DEKRA Certification B.V. Meander 1051, 6825 MJ Arnhem P.O. Box 5185, 6802 ED Arnhem, The Netherlands
T +31 88 96 83000 www.dekra.nl Company registration 09085396