

Express™ Vascular SD Renal Monorail™ Premounted Stent System

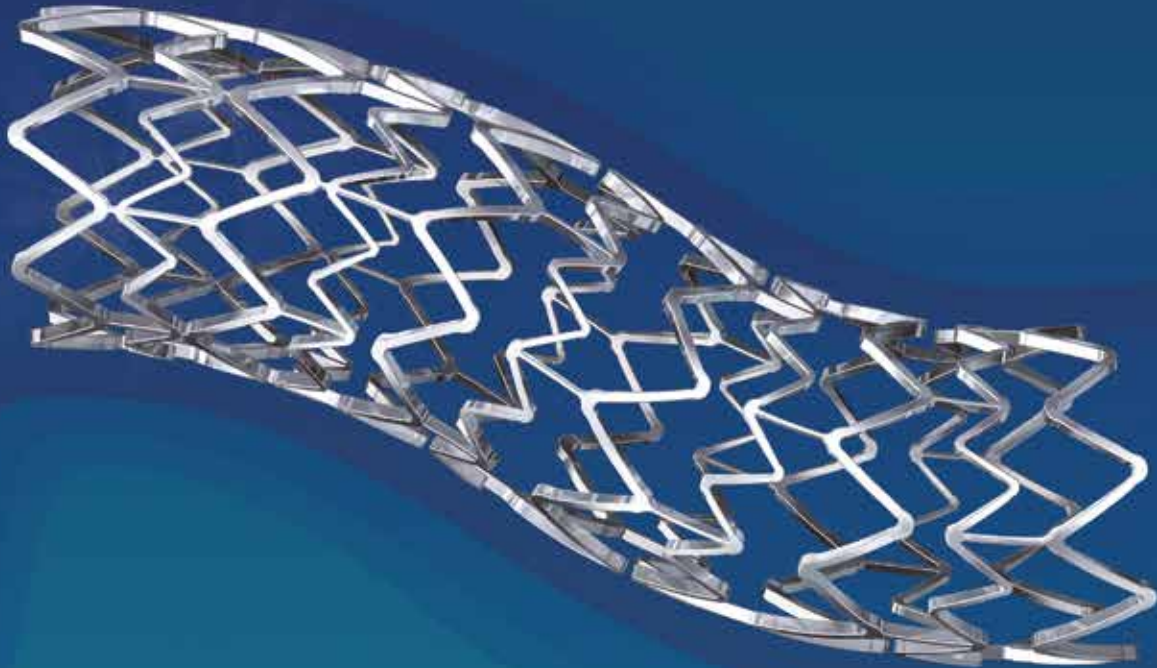
UPN – Catalog Number		Specifications		
90 cm Shaft	150 cm Shaft	Stent Diameter (mm)	Stent Length (mm)	Minimum Introducer Sheath Size/ Inner Diameter (F/mm)
H74937911415900	H74937911415150	4.0	15	5/1.90
H74937912419900	H74937912419150	4.0	19	5/1.90
H74937911515900	H74937911515150	5.0	15	5/1.90
H74937912519900	H74937912519150	5.0	19	5/1.90
H74937911614900	H74937911614150	6.0	14	5/1.90
H74937912618900	H74937912618150	6.0	18	5/1.90
H74937911715900	H74937911715150	7.0	15	6/2.23
H74937912719900	H74937912719150	7.0	19	6/2.23

Compliance Chart				
Pressure (kPa)	Stent Diameter (mm)			
	4.0 mm	5.0 mm	6.0 mm	7.0 mm
810*	3.70 mm	4.67 mm	5.75 mm	6.50 mm
1013**	3.93 mm	4.94 mm	6.10 mm	6.91 mm
1216	4.11 mm	5.16 mm	6.39 mm	7.25 mm
1418***	4.27 mm	5.35 mm	6.63 mm	7.54 mm

\*Stent Opening. \*\*Nominal Pressure. \*\*\*Rated Burst Pressure. DO NOT EXCEED.

EXPRESS™ Vascular SD Monorail Premounted Stent System

STRENGTH AND PRECISION



EXPRESS™ SD Premounted Stent System is a trademark of Boston Scientific Corporation.  
PALMAZ BLUE Peripheral Stent is a trademark of Cordis Corporation, a Johnson & Johnson Company.  
Racer Renal Stent System is a trademark of Medtronic.  
Formula 418RX Renal Balloon-Expandable Stent is a trademark of Cook Medical.  
Herculink Elite and RX Herculink Plus are trademarks of Abbott Vascular.

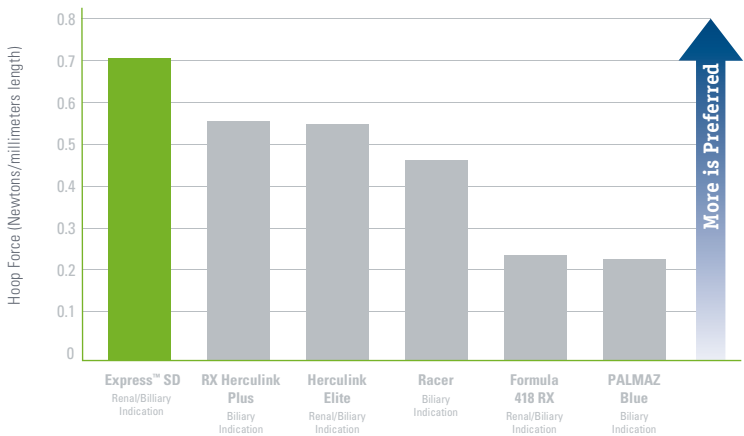
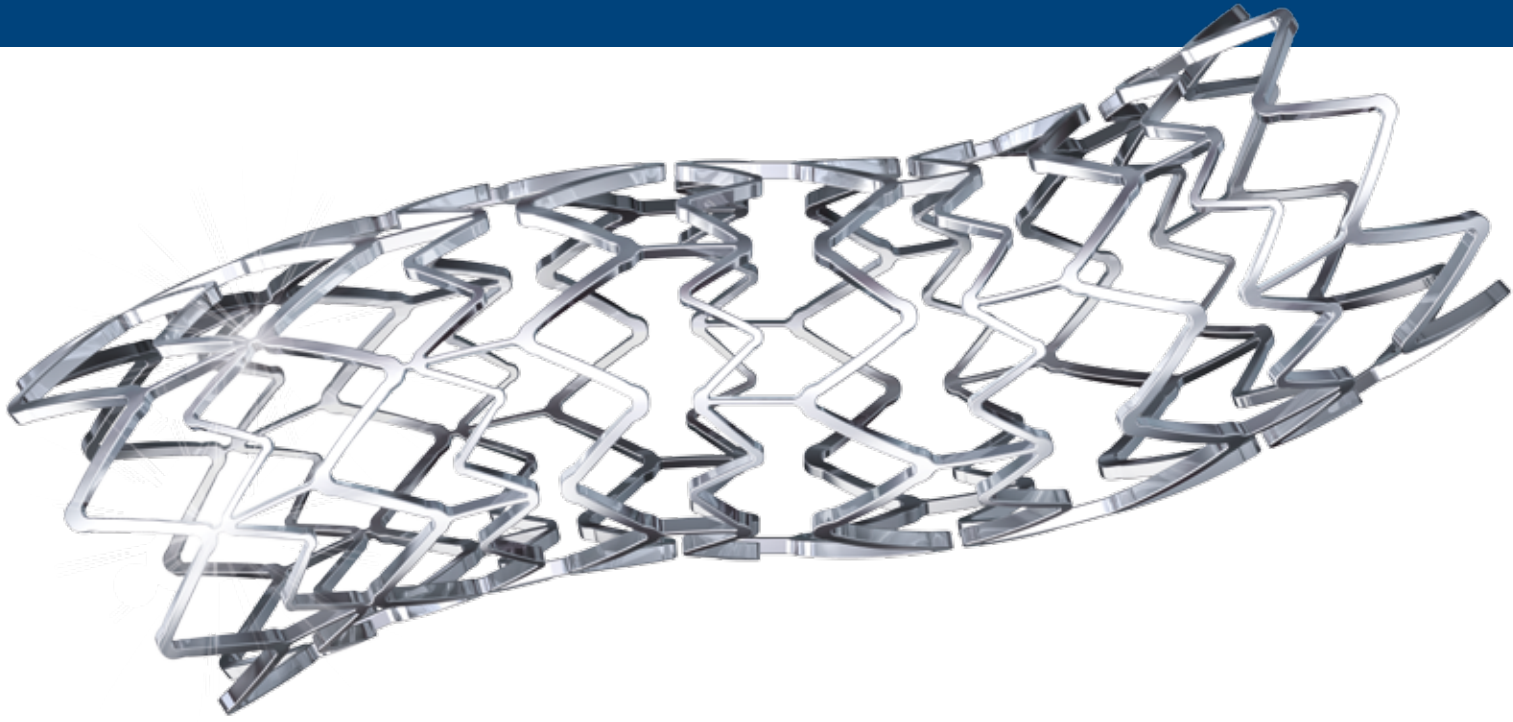
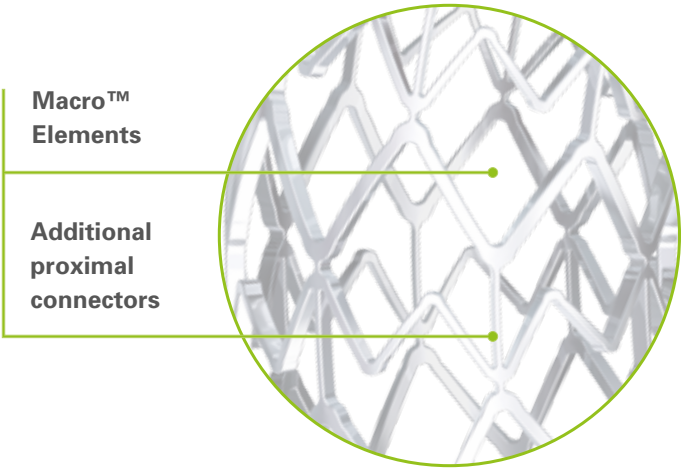
All cited trademarks are the property of their respective owners. CAUTION: The law restricts these devices to sale by or on the order of a physician. Indications, contraindications, warnings and instructions for use can be found in the product labeling supplied with each device. Information for the use only in countries with applicable health authority product registrations.

Information contained herein is not intended for distribution in France. Illustrations for information purposes – not indicative of actual size or clinical outcome.

PI-274704-AB OCT2017 Printed in Germany by medicalvision.

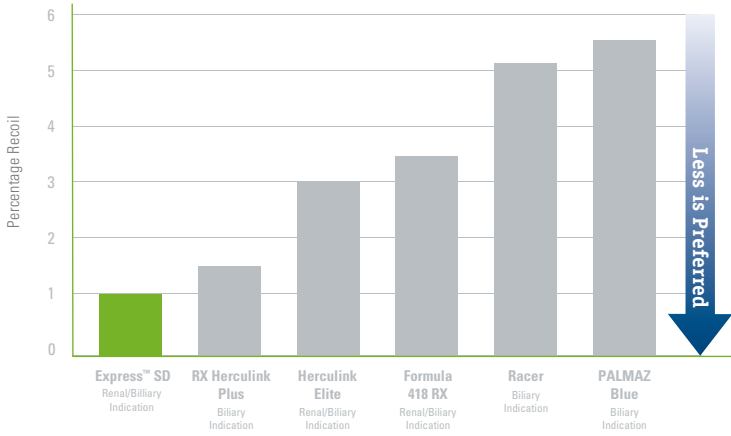
# Everything you need for acute success

The Express™ Vascular SD Premounted Stent couples excellent compression resistance with lower stent foreshortening and recoil. Only Express SD has the ideal balance of strength and precision for acute success, every time.



## Excellent compression resistance<sup>1</sup>

The Express SD Stent's patented Tandem Architecture Stent Design includes **Macro Elements** and **additional proximal connectors**, designed to provide **balanced strength** with extra support at the ostium.



## Low Foreshortening and Recoil<sup>2</sup>

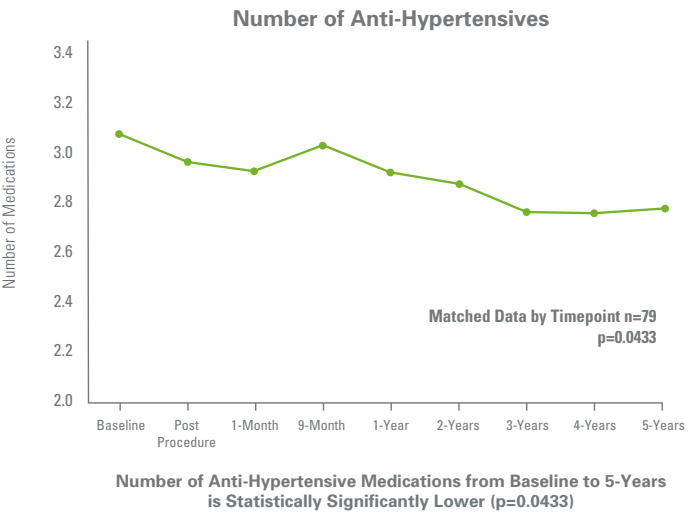
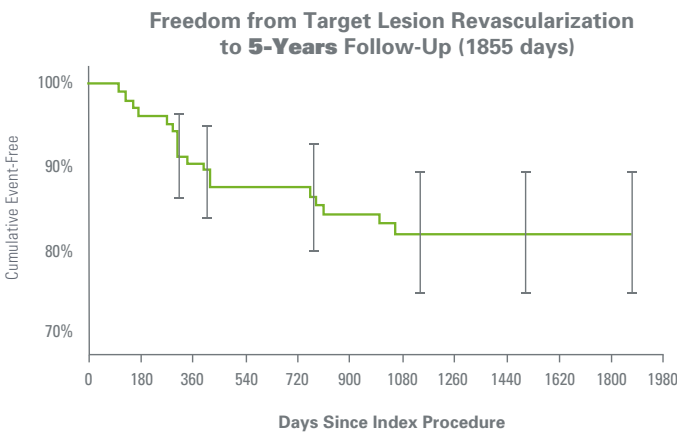
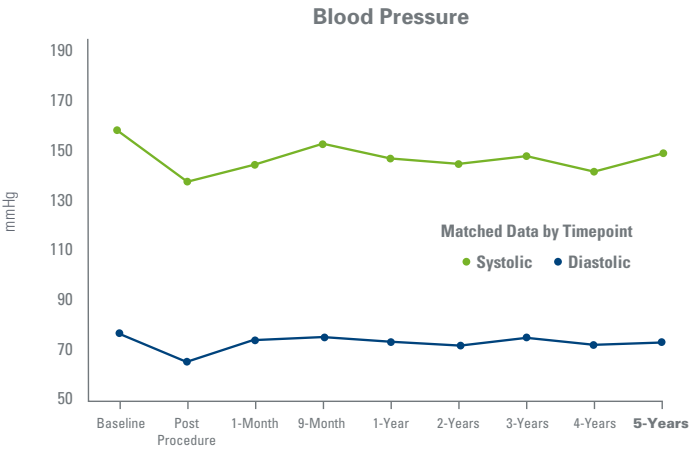
The Express SD Stent's patented Tandem Architecture Stent Design is also designed to **improve placement accuracy** and to **retain diameter** upon deployment.

<sup>1</sup>Compression Resistance defined as the force required to compress the fully expanded stent. Compression Resistance measured using a hoop force tester in 37° C air. N=3. Bench testing performed by Boston Scientific. Bench test results may not necessarily be indicative of clinical performance. Data on file.

<sup>2</sup>Stent recoil defined as the change in stent diameter from nominally pressurized catheter to non pressurized catheter condition in 37° C water, as measured by a magnified vision system. N=3. Bench testing performed by Boston Scientific. Bench test results may not necessarily be indicative of clinical performance. Data on file.

## Clinically Proven in Renal Arteries

The RENAISSANCE trial\* evaluated the safety and efficacy of the Express Vascular SD Premounted Stent in patients with atherosclerotic renal artery stenosis. The study included 100 patients in 14 sites.



\*Renaissance Trial. Study results on file at Boston Scientific Corporation: data available upon request. Illustrations for information purposes only, not indicative of actual size or clinical outcome.