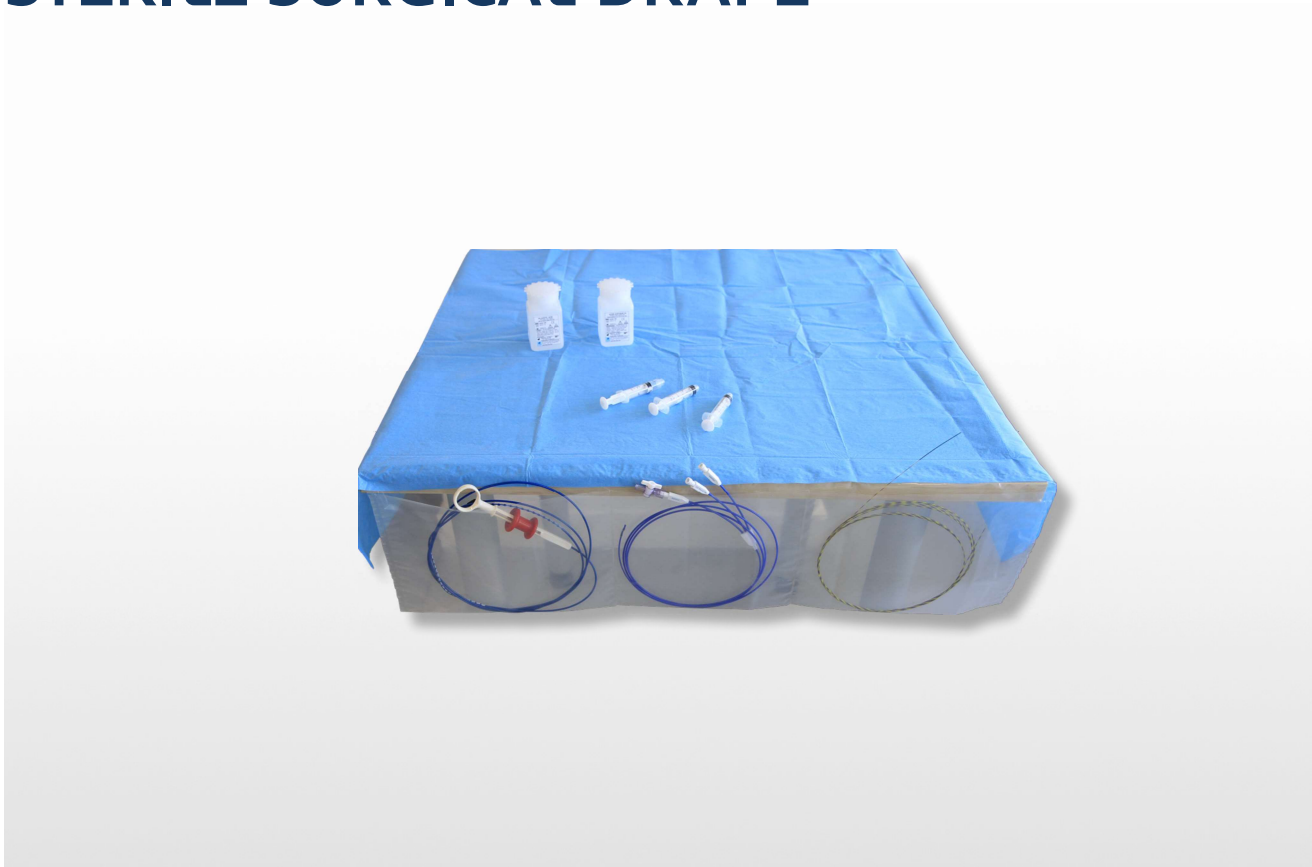


# KANGOO 3 POCKETS

## STERILE SURGICAL DRAPE



Primary packaging: pouch  
 Secondary packaging: cardboard box

### Description:

- Easy storage of long endoscopic accessories,
- Prevent fall accessories.

Reference	Description	Dimensions (cm)	Minimum delivery quantity
NLS/SF3-M	Sterile surgical drape with 3 pockets	75 x 130	100



# BITE-BLOCKS



NLS/BBA



CJ-JHY-KD-BI



NLS/BBS-O2



VTL/BT07



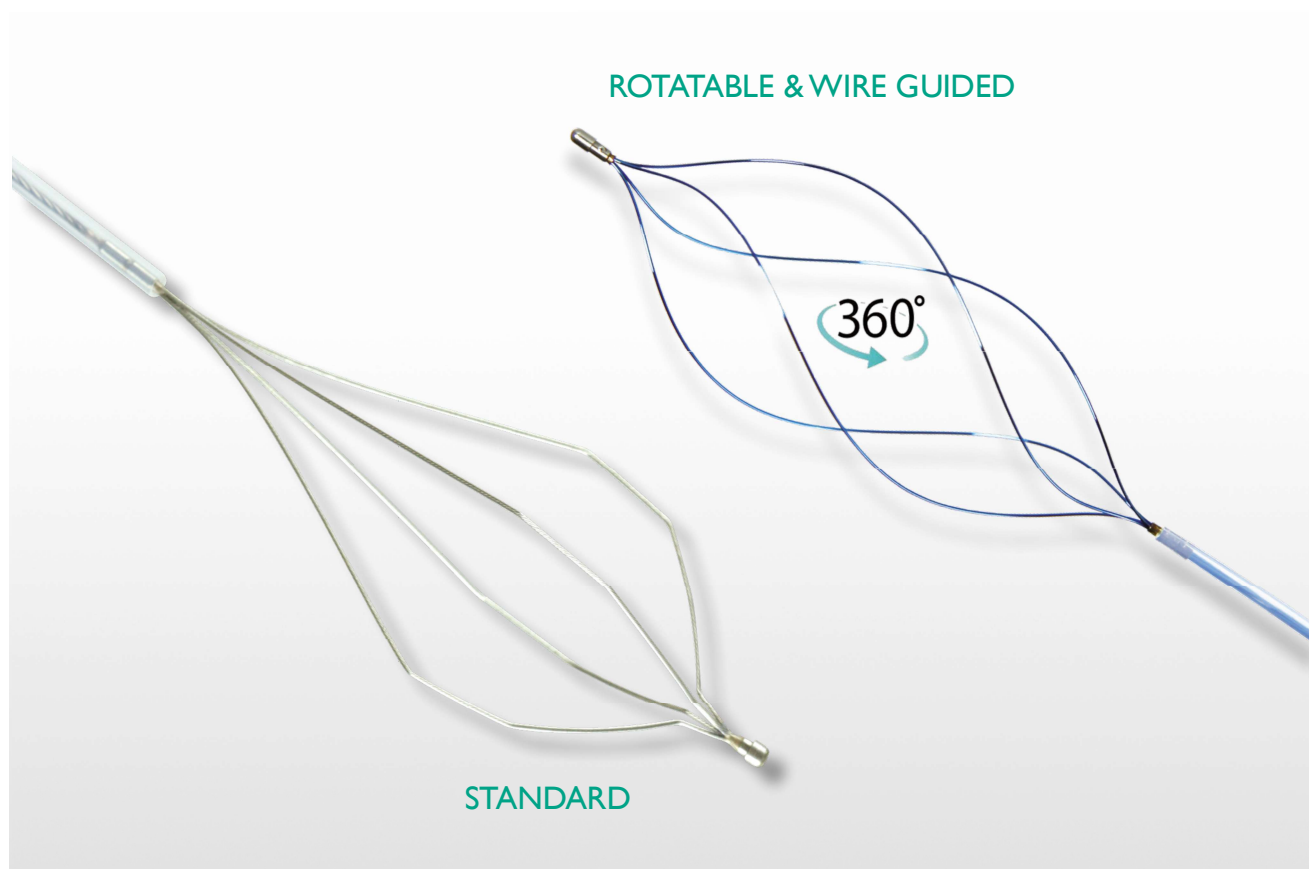
**Description:**

Primary packaging: pouch  
 Secondary packaging: cardboard box

- Protection of the teeth and the endoscope during digestive endoscopies.

References	Description	Strap	Opening diameter mm / fr	Minimum delivery quantity
NLS/BBA	Ergonomic bite-block	Spandex	20 / 60	100
CJ-JHY-KD-BI	Ergonomic bite-block	Rubber	20 / 60	250
NLS/BBS-O2	Bite-block with oxygen connector	Spandex	17.8 x 26 / 53	100
VTL/BT07	Pediatric bite-block	Spandex	19 x 16 / 48	100

# STONE EXTRACTION BASKET



Primary packaging: Pouch  
 Secondary packaging: cardboard box

## Description:

### Standard :

- Stainless steel multi strand wire,
- 4 angled wires.

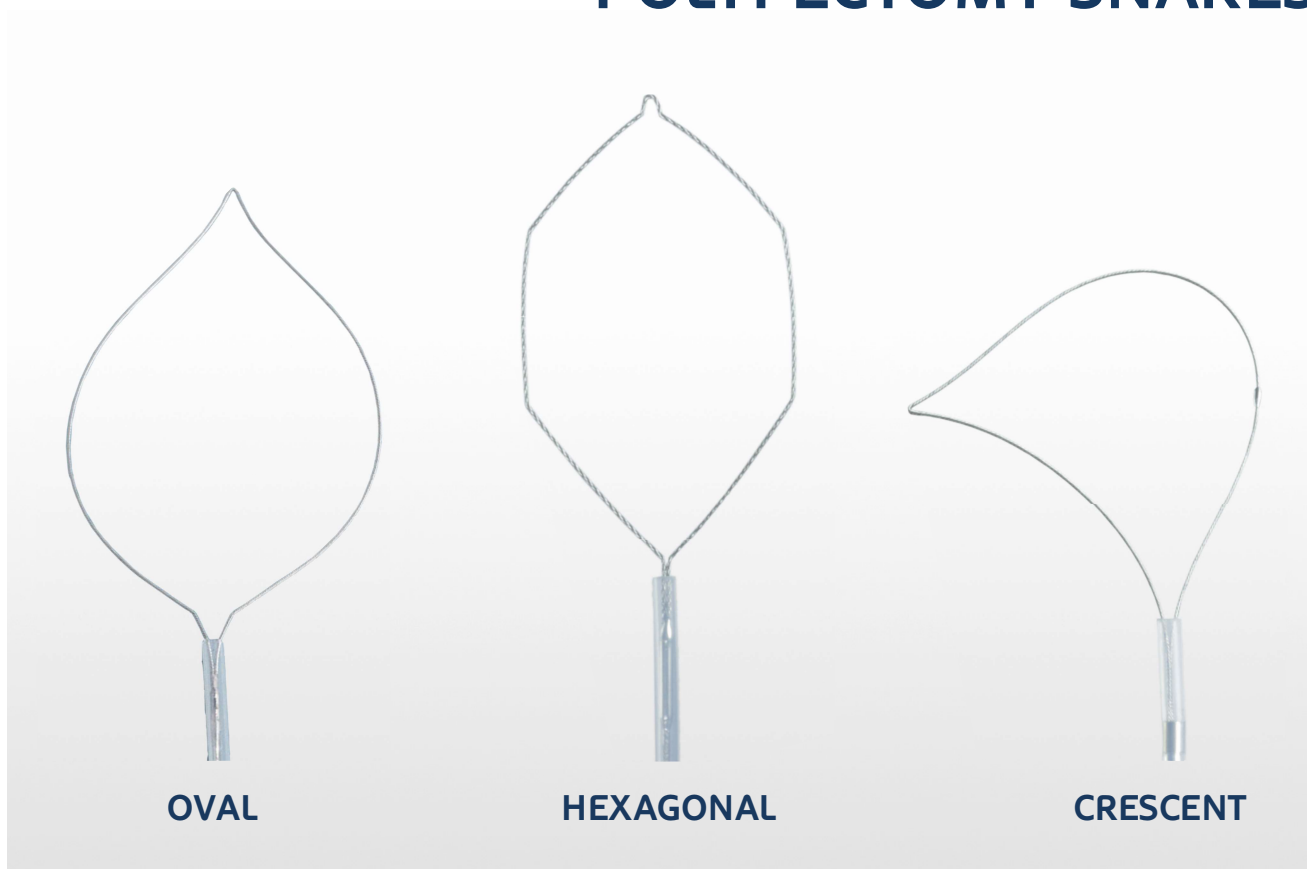
### Rotatable & wire guided :

- Composed of 4 single nitinol wires,
- The rotatable shape and the spiral shape of the basket facilitate the capture of stones,
- In case a stone is blocked in the extraction basket, a basket wire can be broken to free the stone, (connect to a universal lithotripsy handle)
- Compatible with short or long guide wire (0.035" max)

References	Basket diameter (mm)	Catheter		Minimal working channel diameter (mm)	Minimum delivery quantity
		Length (cm)	Diameter (mm)		
WS-2420GL025	25	200	2.4	2.8	10
WS-2420GL03	30	200	2.4	2.8	10
WS-2420GL035	35	200	2.4	2.8	10
NLS/BKS-20-24-195G	20	195	3.1	3	
NLS/BKS-30-24-195G	30	195	3.1	3.7	

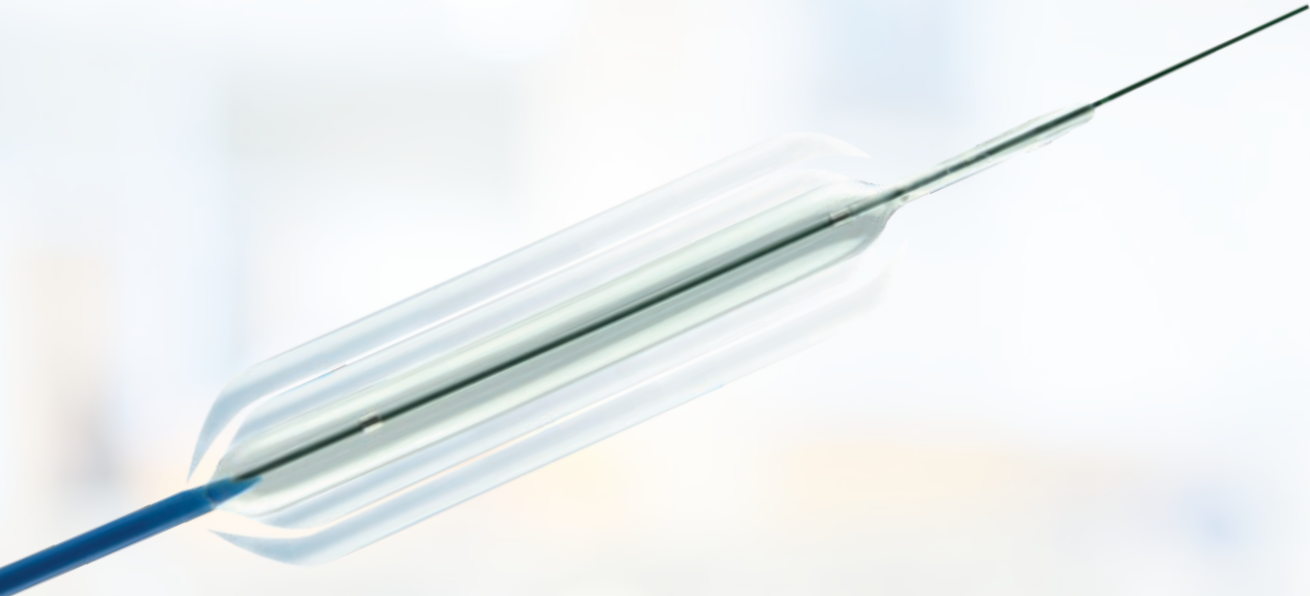


# STANDARD HOT SNARES POLYPECTOMY SNARES

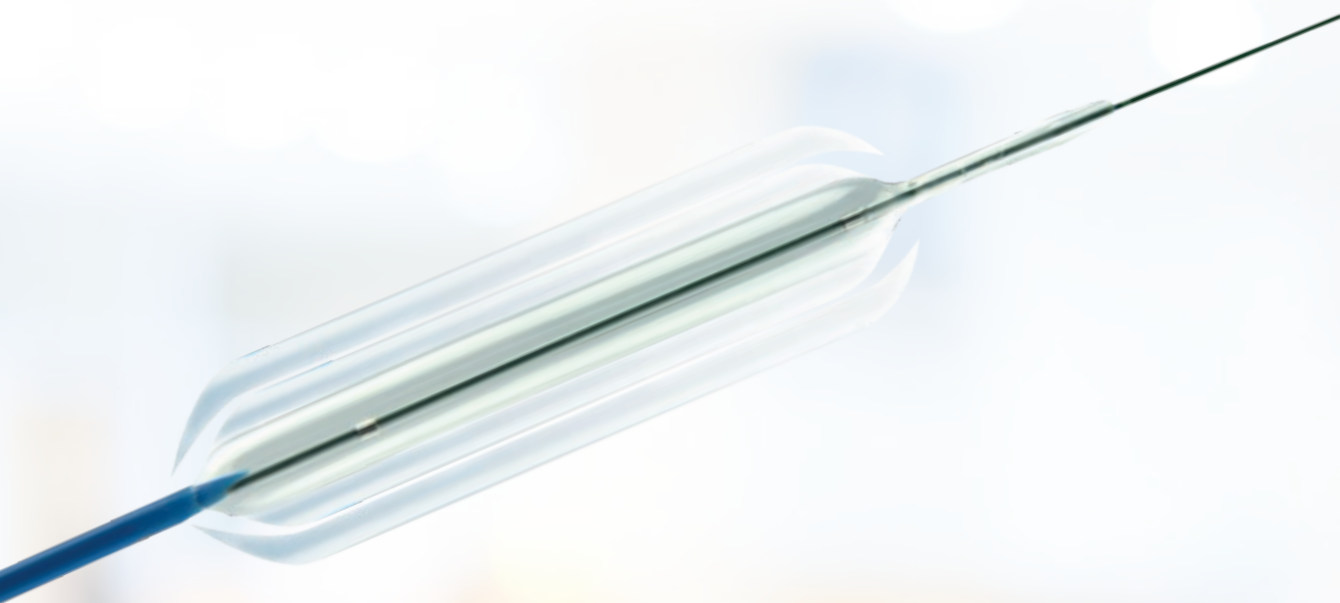


Primary packaging: Pouch  
Secondary packaging: cardboard box

References	Description	Snare width (mm)	Catheter		Minimum delivery quantity
			Diameter (mm)	Length (cm)	
CJ-ADR-23-230-O10	Oval	10	2.3	230	10
CJ-ADR-23-230-O15		15	2.3	230	
CJ-ADR-23-230-O20		20	2.3	230	
CJ-ADR-23-230-O25		25	2.3	230	
CJ-ADR-23-230-O30		30	2.3	230	
CJ-ADR-23-230-O35		35	2.3	230	
CJ-ADR-23-230-O40		40	2.3	230	
CJ-ADR-23-230-O45		45	2.3	230	
CJ-ADR-23-230-O50		50	2.3	230	
VTL/SN-24-240-O10*		Hexagonal	10	2.4	
VTL/SN-24-240-O15*	15		2.4	240	
VTL/SN-24-240-O20*	20		2.4	240	
VTL/SN-24-240-O25*	25		2.4	240	
VTL/SN-24-240-O30*	30		2.4	240	
CJ-ADR-23-230-H15	Hexagonal	15	2.3	230	10
CJ-ADR-23-230-H25		25	2.3	230	
CJ-ADR-23-230-H30		30	2.3	230	
CJ-ADR-23-230-H35		35	2.3	230	
CJ-ADR-23-230-C15	Crescent	15	2.3	230	10
CJ-ADR-23-230-C25		25	2.3	230	



DILATION  
BALLOONS AND WIRES



# MULTI-STAGE DILATION BALLOONS

## THREE DIAMETERS, ONE BALLOON

The multi-stage dilation balloon from MICRO-TECH facilitates simple and reliable dilation of stenoses. Each balloon can be expanded to three different, fixed diameters for progressive dilation of stenosis in three pre-defined stages. The pressure is distributed evenly over the entire working length of the balloon at every diameter. The

rounded tips enable a good endoscopic view of the stenosis, even during dilation, ensuring controlled, safe intervention and good therapeutic success. Thanks to the preloaded stiffed wire with its flexible, hydrophilic, radiopaque tip, the balloons are readily introduced and are then rapidly deflated after successful dilation.

### SPECIFIC CHARACTERISTICS

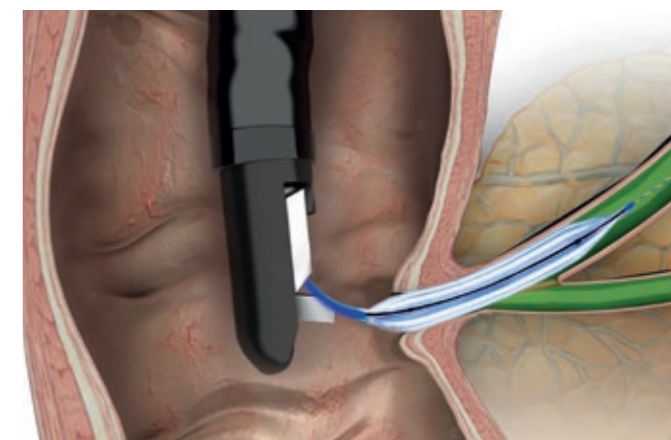
- Three different diameters with three separate pressure levels
- 2 X-ray markers on opposite ends to indicate the exact working length of the balloon
- Rounded Balloon shoulders for clear endoscopic view of the balloon's distal end
- Conical, atraumatic catheter tip
- Preloaded stiffed wire with hydrophilic, radiopaque tip



Separate openings for stiffed wire and insufflation

### SINGLE-USE INFLATION-INSTRUMENT

Sturdy construction and an ergonomic handle for easy control. With quick-lock mechanism for one-handed deflation, even under full pressure. The clear cylinder and the easy to read scale allow for a close look at the content and the amount. The exact gauge guarantees reliable pressure measurement.



### SPECIFICATIONS

REF	Content ml air/liquid	Max. pressure ATM	Feature		
<b>SINGLE-USE INFLATION-INSTRUMENT</b>					
BID-15-60-01	60	15	3-way-stopcock		
REF	Balloon Ø mm	Balloon 3-stagedilation pressure (atm)	Balloon length mm	Catheter Ø fr.	Catheter length mm
<b>MULTI-STAGE DILATION BALLOONS</b>					
MBD-AS-BB-2	6 / 7 / 8	3 / 6 / 10	30	7	2300
MBD-AM-BA-2	6 / 7 / 8	3 / 6 / 10	55	7	1800
MBD-AM-BB-2	6 / 7 / 8	3 / 6 / 10	55	7	2300
MBD-AL-BA-2	6 / 7 / 8	3 / 6 / 10	80	7	1800
MBD-BS-BB-2	8 / 9 / 10	3 / 5.5 / 9	30	7	2300
MBD-BM-BA-2	8 / 9 / 10	3 / 5.5 / 9	55	7	1800
MBD-BM-BB-2	8 / 9 / 10	3 / 5.5 / 9	55	7	2300
MBD-BL-BA-2	8 / 9 / 10	3 / 5.5 / 9	80	7	1800
MBD-CS-BB-2	10 / 11 / 12	3 / 5 / 8	30	7	2300
MBD-CM-BA-2	10 / 11 / 12	3 / 5 / 8	55	7	1800
MBD-CM-BB-2	10 / 11 / 12	3 / 5 / 8	55	7	2300
MBD-CL-BA-2	10 / 11 / 12	3 / 5 / 8	80	7	1800
MBD-DS-BB-2	12 / 13.5 / 15	3 / 4.5 / 8	30	7	2300
MBD-DM-BA-2	12 / 13.5 / 15	3 / 4.5 / 8	55	7	1800
MBD-DM-BB-2	12 / 13.5 / 15	3 / 4.5 / 8	55	7	2300
MBD-DL-BA-2	12 / 13.5 / 15	3 / 4.5 / 8	80	7	1800
MBD-EM-BA-2	15 / 16.5 / 18	3 / 4.5 / 7	55	7	1800
MBD-EM-BB-2	15 / 16.5 / 18	3 / 4.5 / 7	55	7	2300
MBD-EL-BA-2	15 / 16.5 / 18	3 / 4.5 / 7	80	7	1800
MBD-FM-BA-2	18 / 19 / 20	3 / 4.5 / 6	55	7	1800
MBD-FM-BB-2	18 / 19 / 20	3 / 4.5 / 6	55	7	2300
MBD-FL-BA-2	18 / 19 / 20	3 / 4.5 / 6	80	7	1800

Packaging unit: 1 piece / suitable for guide wires with 0.035"



# DILATION BALLOONS

## SIMPLY EXPAND RELIABLY AND EFFECTIVELY

The dilation balloons from MICRO-TECH stand for maximum quality. MICRO-TECH produces all the dilation balloons itself – using state-of-the-art European and American production technology. Two x-ray markings indicate the exact working length of the balloon, thereby ensuring its precise positioning. Under application of pressure, the

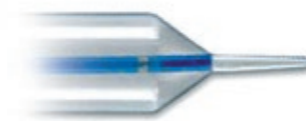
balloon is rapidly filled to acquire its predefined expansion width. Furthermore, the high-pressure design ensures the balloon retains its shape over the entire working length, thereby allowing optimum dilation success. All balloons are available as TTS (through-the-scope) systems up to a diameter of 18 mm and a catheter length of 1800 mm.

### SPECIFIC CHARACTERISTICS

- Dimensionally stable high pressure design
- 2 X-ray markers on opposite ends to indicate the exact working length of the balloon
- Separate guide wire and insufflation lumens
- Conical shaped catheter tip
- Rapid expansion
- Constant dilation over the entire length
- Guide-wire compatible up to 0.035 inches



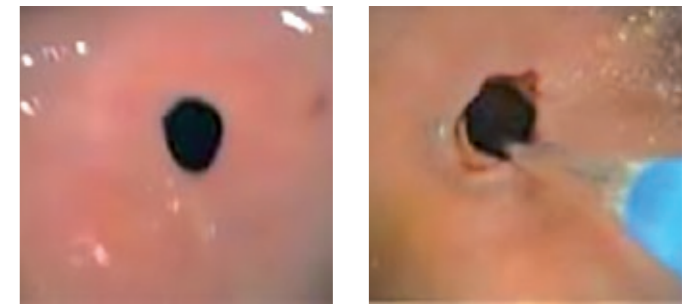
X-ray marking



Conical tip

### SUCCESSFUL IN PRACTICAL USE

Stenoses are effectively dilated using the MICRO-TECH dilation balloons. The balloon dilates the stenosis safely and gently and prepares the area to be treated in an optimum manner. The uniform distribution of pressure over the entire working length of the balloon and the outstanding dimensional stability during dilation guarantee excellent therapeutic success over the entire length of the stenosis.

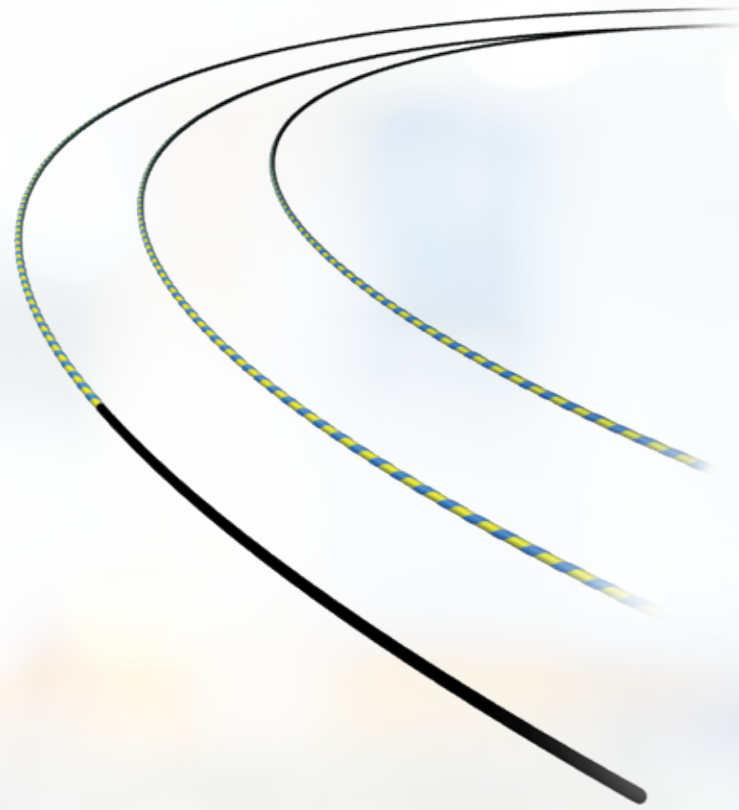


Endoscopic control during dilation therapy

### SPECIFICATIONS

REF	Balloon Ø mm	Balloon length mm	Catheter Ø fr.	Catheter length mm	Channel Ø mm	Application
<b>TTS – DILATION BALLOONS</b>						
BDC-8/55-7/18	8	55	7	1800	2.8	oesophagus/bile duct
BDC-8/55-7/24	8	55	7	2400	2.8	pylorus/colon
BDC-10/55-7/18	10	55	7	1800	2.8	oesophagus/bile duct
BDC-10/55-7/24	10	55	7	2400	2.8	pylorus/colon
BDC-12/55-7/18	12	55	7	1800	2.8	oesophagus
BDC-12/55-7/24	12	55	7	2400	2.8	pylorus/colon
BDC-16/55-7/18	16	55	7	1800	2.8	oesophagus
BDC-16/55-7/24	16	55	7	2400	2.8	pylorus/colon
BDC-18/55-7/18	18	55	7	1800	2.8	oesophagus
BDC-18/55-7/24	18	55	7	2400	2.8	pylorus/colon
BDC-20/55-7/18	20	55	7	1800	4.2	oesophagus
BDC-20/55-7/24	20	55	7	2400	4.2	pylorus/colon
BDC-12/80-7/18	12	80	7	1800	2.8	oesophagus
BDC-12/80-7/24	12	80	7	2400	2.8	pylorus/colon
BDC-16/80-7/18	16	80	7	1800	2.8	oesophagus
BDC-16/80-7/24	16	80	7	2400	2.8	pylorus/colon
BDC-18/80-7/18	18	80	7	1800	2.8	oesophagus
BDC-18/80-7/24	18	80	7	2400	2.8	pylorus/colon
BDC-20/80-7/18	20	80	7	1800	4.2	oesophagus
BDC-20/80-7/24	20	80	7	2400	4.2	pylorus/colon
<b>ACHALASIE-BALLOONS</b>						
BDC-26/80-7/10	26	80	7	1000	–	Achalasie
BDC-30/80-7/10	30	80	7	1000	–	Achalasie
BDC-34/80-7/10	34	80	7	1000	–	Achalasie
<b>FIXED WIRE BALLOONS</b>						
FWB-06/80-6/18-M	6-7-8	80	6	1800	2.8	Upper/lower GI
FWB-08/80-6/18-M	8-9-10	80	6	1800	2.8	Upper/lower GI
FWB-10/80-6/18-M	10-11-12	80	6	1800	2.8	Upper/lower GI
FWB-12/80-6/18-M	12-13.5-15	80	6	1800	2.8	Upper/lower GI
FWB-15/80-6/18-M	15-16.5-18	80	6	1800	2.8	Upper/lower GI
FWB-18/80-6/18-M	18-19-20	80	6	1800	2.8	Upper/lower GI

Packaging unit: 1 piece / suitable for guide wires with 0.035\*



# GUIDE WIRES

## THE RELIABLE CHOICE FOR STENT PLACEMENT AND ERCP

All guide wires are manufactured out of bending-resistant and torsion-proof Nitinol. Their hydrophilic coated tips, allow the wires to safely find their way even into areas and stenoses which are hard to reach. This is supported by the wire's high rigidity and controllability. Hence the guide wires are not only meant for sophisticated stent

placements, but are also perfectly suited for ERCP. The high radiopacity of the flexible hydrophilic tip facilitates exact stent placement under visual radiological control. Two different series are available: the Classic-series made in Germany and the Eco-series from MICRO-TECH as a cost-efficient alternative.

### SPECIFIC CHARACTERISTICS

- Non-kinking nitinol wire
- High level of rigidity and guidability
- Hydrophilic, atraumatic tip
- Working length: 4500 mm
- High level of radiopacity



Wire with straight tip



Wire with J-tip

### SUCCESSFUL IN PRACTICAL ROUTINE WORK

Bending resistance and rigidity account for the very good feeding properties of guide wires. In daily applications they convince by their precision, which is primarily guaranteed by the efficient transmission of the rotatory and translatory motion all the way to the tip of the wire, as applied by the surgical assistant. This makes it possible to reach into even anatomically difficult passages with ease. In addition, the tip of each wire can be perfectly seen in the X-ray control image, allowing for optimal stent positioning.



Endoscopic view



X-ray

### DISPENSER FOR EASY OPERATION

The wire can be easily ejected and retracted by means of this innovative dispenser. Owing to its compact design, the dispenser is handy and easy to operate. Rinsing the wire is also easy and fast when using the dispenser.



Dispenser guide wires

### SPECIFICATIONS

REF	Ø inches	Total length mm	Tip length mm	Tip form	Set-up	Covering
<b>CLASSIC GUIDE WIRE</b>						
600375-5	0.035"	2600	130	straight	hydrophilic, radiopaque	extra stiff
600382-5	0.035"	4200	130	straight	hydrophilic, radiopaque	extra stiff
600365-5	0.035"	2000	50	straight	radiopaque	black covering
600366-5	0.035"	2000	50	straight	radiopaque	black-yellow covering
600384-5	0.035"	4500	65	straight	hydrophilic, radiopaque, marks	black covering
600358-5	0.035"	4500	85	straight	hydrophilic, radiopaque	blue-yellow covering
600359-5	0.035"	4500	85	J-form	hydrophilic, radiopaque	blue-yellow covering
600360-5	0.035"	4500	50	straight	hydrophilic, radiopaque	blue-yellow covering
600361-5	0.035"	4500	50	J-form	hydrophilic, radiopaque	blue-yellow covering
<b>ECO GUIDE WIRE</b>						
MTN-BM-89/45-A	0.035"	4500	60	straight	hydrophilic, radiopaque	blue-yellow covering
MTN-BM-89/45-A-J	0.035"	4500	60	J-form	hydrophilic, radiopaque	blue-yellow covering
MTN-BM-89/26-A	0.035"	2600	65	straight	hydrophilic, radiopaque	blue-yellow covering
MTN-BM-89/26-A-J	0.035"	2600	65	J-form	hydrophilic, radiopaque	blue-yellow covering
MTN-BM-63/45-A	0.025"	4500	60	straight	hydrophilic, radiopaque	blue-yellow covering
MTN-BM-63/45-A-S	0.025"	4500	60	straight	hydrophilic, radiopaque	blue-yellow covering
MTN-BM-63/45-A-J	0.025"	4500	60	J-form	hydrophilic, radiopaque	blue-yellow covering
MTN-BM-63/26-A	0.025"	2600	65	straight	hydrophilic, radiopaque	blue-yellow covering
MTN-BM-63/26-A-J	0.025"	2600	65	J-form	hydrophilic, radiopaque	blue-yellow covering
MTN-BM-53/45-A	0.021"	4500	60	straight	hydrophilic, radiopaque	blue-yellow covering
MTN-BM-45/45-A	0.018"	4500	60	straight	hydrophilic, radiopaque	blue-yellow covering

Packaging unit: Classic guide wire: 1 piece, Eco guide wire: 2 pieces





# BOUGIE DILATORS

## SAFE, EASY AND ECONOMICAL DILATION

The reprocessing of a reusable bougie requires a great amount of effort and involves high costs. In contrast, the disposable bougies by MICRO-TECH are immediately ready for use and far more economical. Sterile packed they are durable for up to 2 years and considerably minimize the risk of cross-contamination. For reliable dilation,

you can choose from twelve sizes with a diameter varying from 5 to 19 mm and a length of 850 mm. In addition to the flexibility of the material, these bougies bear graduation markers to facilitate an easier orientation during the dilation process.

### SPECIFIC CHARACTERISTICS

- Sterile disposable bougies for direct use
- Elimination of reprocessing costs
- Twelve diameters from 5 to 19 mm
- Working length: 850 mm
- Distinctive markings along the working length of the bougie
- Guidewire compatible up to 0.038 inch



High quality bougie tip for precise insertion



Bougie with lengths-marking in cm

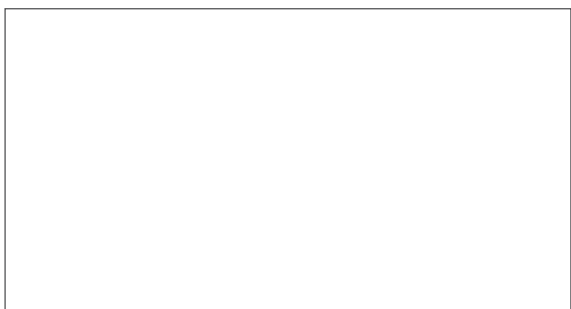
### SPECIFICATIONS

REF	Ø mm	Length mm
<b>BOUGIE DILATORS</b>		
MT-05850	5	850
MT-06850	6	850
MT-07850	7	850
MT-08850	8	850
MT-09850	9	850
MT-10850	10	850
MT-11850	11	850
MT-12850	12	850
MT-13850	13	850
MT-14850	14	850
MT-15850	15	850
MT-16850	16	850
MT-17850	17	850
MT-18850	18	850
MT-19850	19	850
MT-20850	20	850

Packaging unit: 1 piece

# NOTES





# PREPARED FOR EVERY INTERVENTION

Equipped with products  
The range includes devices  
for doctors and nurses as well  
for patient comfort. All solutions

are naturally certified according to EN ISO 13485 and  
fulfill the stringent requirements of directive 93/42 EEC  
concerning medical devices.



## DISPOSABLE COLOSHORTS

Soft and absorbent dark blue material, rear opening that can be closed by Velcro strips, rubber waistband for easy fit



## DISPOSABLE STERILE INSTRUMENT CLOTH

Light blue water resistant and absorbent cloth with either 4 transparent instrument pockets – rear adhesive tape for fixation



For a reliable diagnosis of the rectum MICRO-TECH offers different proctoscopes in disposable variations. The proctoscopes are made of high quality clear acrylic, which ensures a clear view of the intestinal wall and avoids cold sensation for patients during insertion. The proctoscope's smooth surface prevents potential injuries while facilitating the examination.



## SPECIFICATIONS

REF	Description	Length mm
<b>PROCTOSCOPE</b>		
RA1480	Size S for paediatrics, color: white	80
RA2295	Size M, color: yellow	95
RA2695	Size L, color: red	95
RA0001	Adapter for cold-light-source	
Packaging unit: Proctoscopes: 100 pieces / Cold-light-adapter: 1 piece		

REF	Description
<b>MOUTHGUARD</b>	
AC01-102.M	Disposable mouthguard, yellow, NO strap
AC01-103.A	Disposable mouthguard, atraumatic design, blue, latex free textile strap
AC01-103.M	Disposable mouthguard, blue, textile strap
AC01-103.P	Disposable pediatric mouthguard, latex free textile strap
AC01-150	Disposable textile strap, blue (also available separately)

<b>COLOSHORTS</b>	
TX01-101.L	Dark blue, Velcro strips at back, rubber waistband, size: unisex

<b>INSTRUMENT CLOTH</b>	
TX03-101.M4	Light blue, 4 pockets (l x w: 20 x 25 cm each)

<b>BIOPSY VALVES</b>	
AC03-102.O	Blue, for Olympus and Fujifilm endoscopes (G5 and higher)
AC03-102.P	Red, for Pentax endoscopes
AS2450000	Disposable biopsy valve with flush connection, suitable for Olympus and Fujifilm endoscopes
AS2460000	Disposable biopsy valve with flush connection, suitable for Olympus and Fujifilm endoscopes



# DOUBLE CLEANING BRUSHES

## CLEANING

with MICRO-TECH  
brushes, thus reducing the  
risk of damage to the  
num. The brushes  
have special beads on the  
brush head to clean the  
working channel

from being damaged during cleaning. If you wish to make  
your work even safer, more rapid and more efficient, the  
disposable double cleaning brushes with 2 heads are  
recommended. Two cleaning processes can therefore be  
performed simultaneously in a single working step.



disposable cleaning brushes with tapered brush heads.  
According to preference, brushes with constant and  
decreasing brush diameters are available. Conical brush  
heads are indicated by a T in the product number.

### YOUR CHOICE: 1 OR 2 BRUSH HEADS

An ergonomic ring handle on the single head brush sup-  
ports easy removal of the cleaning brush from the endo-  
scope channel. Alternatively the use of a double headed  
cleaning brush can be recommended - a catheter with a  
brush at each end that is pulled through the channel thus  
allowing greater cleaning efficiency with its double brush  
action.

### PRECISELY FITTING DIAMETER

Whether a bronchoscope or a therapeutic endoscope  
with a large working channel is involved – you can obtain  
ideal cleaning brushes for all endoscopes with diameters  
ranging from 3 mm to 11 mm.



## SPECIFICATIONS

REF	Catheter Ø mm	Total length mm	Brush heads
<b>CLEANING BRUSHES WITH ONE HEAD</b>			
CB18-0050-18	1.8	1800	
CB18-0050-23	1.8	2300	
CB18-T0050-23	1.8	2300	5-7/5
<b>CLEANING BRUSHES WITH TWO HEADS</b>			
CB18-3030-18	1.8	1800	
CB18-5060-18	1.8	1800	
CB18-5050-23	1.8	2300	
CB18-T5050-23	1.8	2300	5-7/5
CB23-5050-18	2.3	1800	
CB23-5050-23	2.3	2300	

Packaging unit: 100 pieces

# ION CLEANING SOLUTIONS

## ON FOR THE DAILY PRACTICE

channels and its airwa-  
ush. MICRO-TECH  
that makes the daily

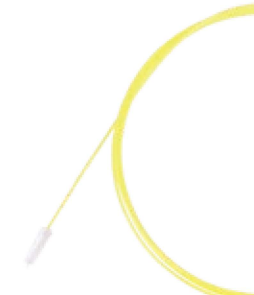
practice easier and more efficient. The dual cleaning brush  
and valve brush combination set made by MICRO-TECH is  
such a solution for the reprocessing of the endoscope.

ough brushing of the air-water valve vents and ports. The  
double header brush combines a 40 mm long and 11 mm  
thick port brush with a 20 mm long and 5 mm thin vent  
brush. Both brushes are flexible and have protective distal  
beads to help prevent damage to the endoscope.

Double headed cleaning brush

### COMBINATION DUAL FUNCTION BRUSH

A cleaning brush with a conical brush head for the endo-  
scope channels and a large calibre and long brush head  
for the airwater valve- ports allow channel and valve-port  
brushing with a single cleaning brush. This saves time and  
reduces costs.



Combination cleaning brush

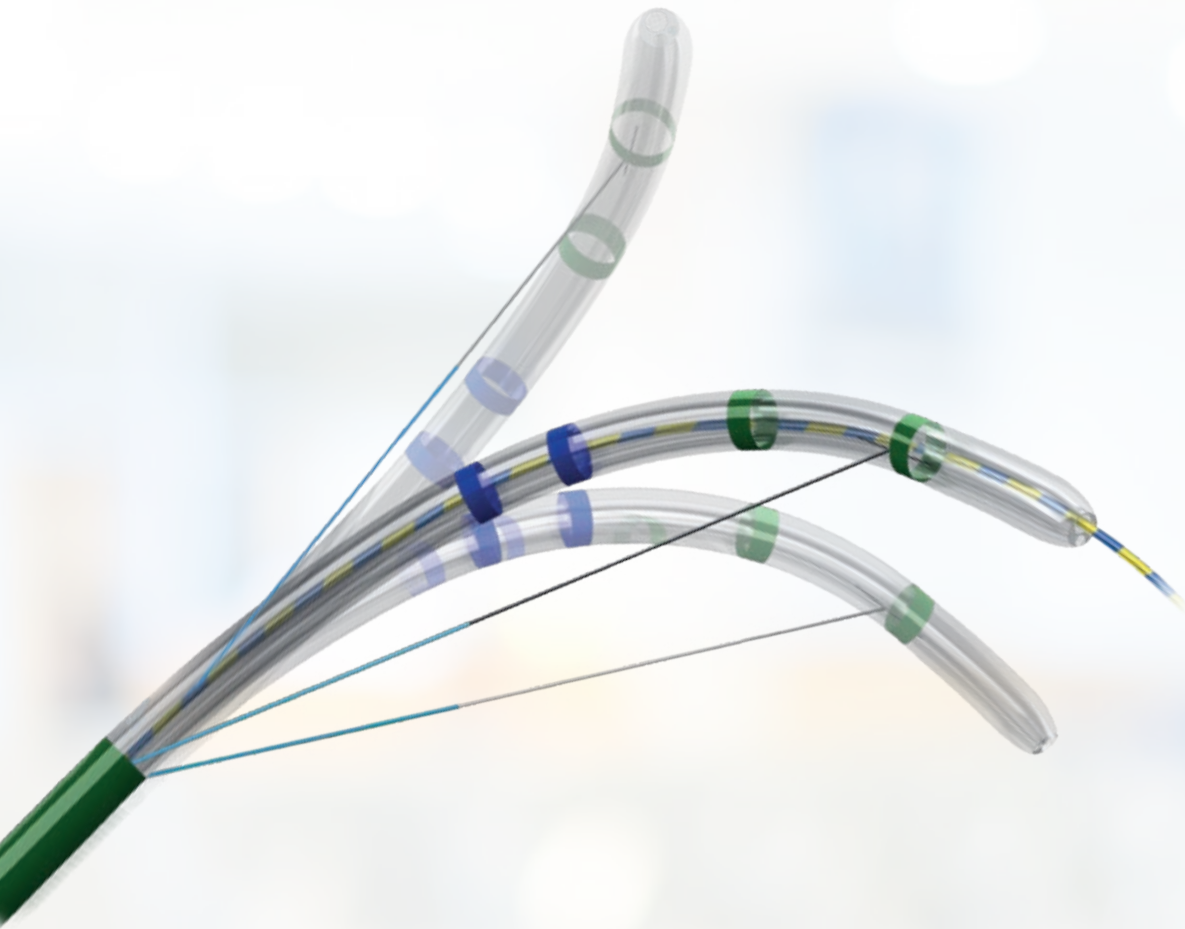
### SMART AND EFFICIENT: CLEANING BRUSH SETS

The MICRO-TECH cleaning brush set includes all necessary  
brushes for a thorough and easy cleaning of the endoscope.  
It contains one cleaning brush for the endoscope channels  
and one double header cleaning brush for the valve vents

and ports. The sets are  
single or one double h  
brush. Each set is deli

## SPECIFICATIONS

REF	Catheter Ø mm	Total length mm	Bru
<b>CLEANING BRUSH FOR VALVE VENT</b>			
CB13-50120-01	1.3	160	
<b>COMBINATION CLEANING BRUSH</b>			
CB18-T50110-23	1.8	2300	5-7
<b>CLEANING BRUSH SET</b>			
<b>CB18-T0050-23-B</b>			
CB18-T0050-23	1.8	2300	5-
CB13-50120-01	1.3	-	



**BILIARY**  
**LONGWIRE**



# 3-LUMEN PAPILOTOME

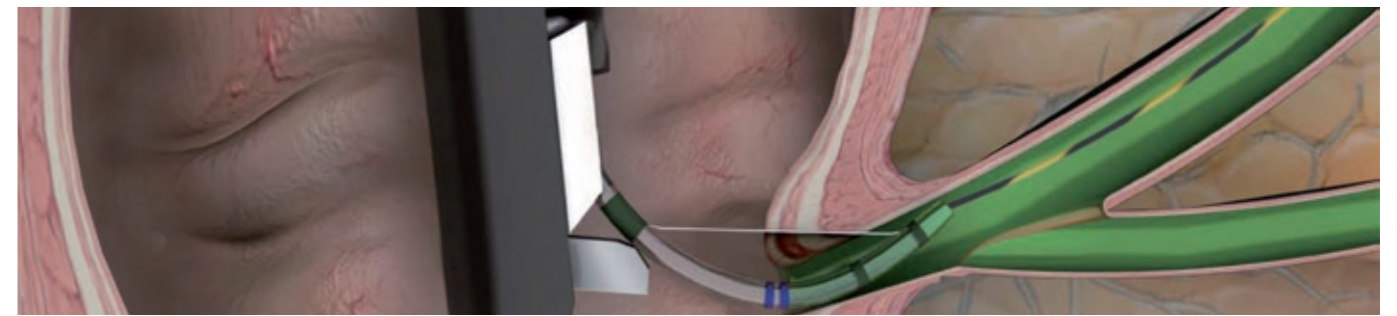
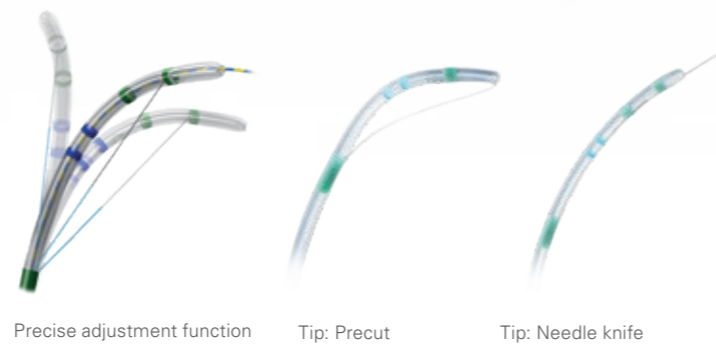
## FOR PRECISE WIRE GUIDANCE AND CANNULATION

Positioning, cannulation and resection are the decisive features of a safe and successful papillotomy. The 3-lumen papillotome from MICRO-TECH meets these requirements in every way: Emerging from the working channel in the correct position, the atraumatic tip, tapered to 5 Fr, supports cannulation and the resection is done reliably at the “11 o'clock” marker. Maximum safety during resection

is also provided by optional proximal insulation of the cutting wire. The three lumens for cutting wire, guide wire and contrast media provide for a high level of safety and efficient contrast injection. Thanks to the ergonomic 3-ring grip handle, this papillotome is highly user-friendly and easy to control.

### SPECIFIC CHARACTERISTICS

- 3 lumen for guide wire, cutting wire and contrast injection
- Optional insulation of proximal cutting wire
- Cutting direction at 11 o'clock
- Filiform tip, tapered to 5 Fr
- Working length: 2.000 mm
- Outer diameter: 2.5 mm
- Guide wire compatible fully mobile up to 0.035 inch



### SPECIFICATIONS

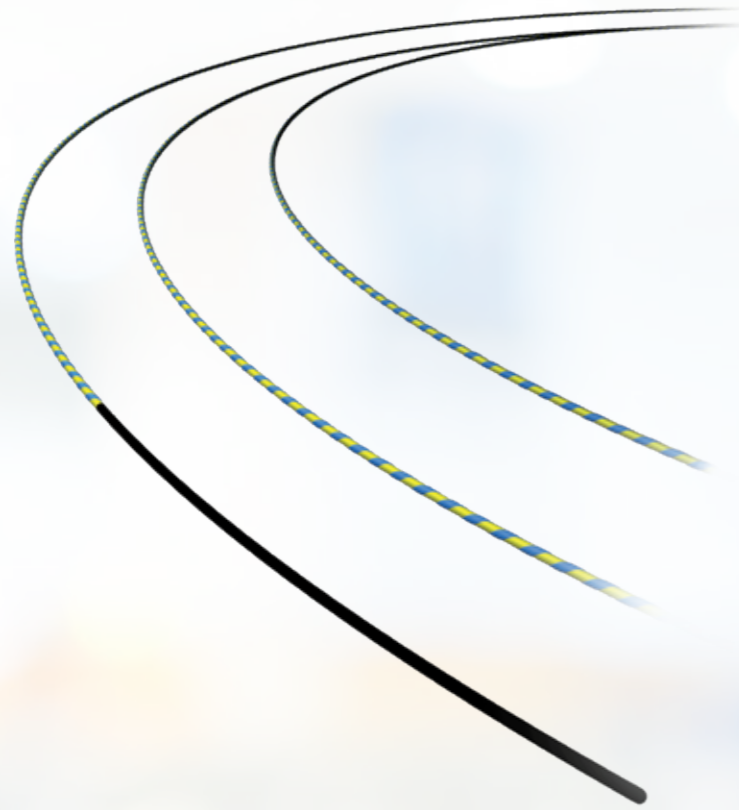
REF	Tip length mm	Cutting wire length mm	Partly insulated cutting wire	Preloaded guide wire	Ø working channel mm
<b>PAPILOTOME, 3-LUMEN, CONE-TIP</b>					
DSP-30020-111111	0	20	No	No	2.8
DSP-30020-111211	0	20	Yes	No	2.8
DSP-30025-111111	0	25	No	No	2.8
DSP-30025-111211	0	25	Yes	No	2.8
DSP-30030-111111	0	30	No	No	2.8
DSP-30030-111211	0	30	Yes	No	2.8
DSP-30220-111111	2	20	No	No	2.8
DSP-30220-111211	2	20	Yes	No	2.8
DSP-30225-111111	2	25	No	No	2.8
DSP-30225-111211	2	25	Yes	No	2.8
DSP-30230-111111	2	30	No	No	2.8
DSP-30230-111211	2	30	Yes	No	2.8
DSP-30520-111111	5	20	No	No	2.8
DSP-30520-111211	5	20	Yes	No	2.8
DSP-30525-111111	5	25	No	No	2.8
DSP-30525-111211	5	25	Yes	No	2.8
DSP-30530-111111	5	30	No	No	2.8
DSP-30530-111211	5	30	Yes	No	2.8
DSP-30020-111121	0	20	No	Yes	2.8
DSP-30020-111221	0	20	Yes	Yes	2.8
DSP-30025-111121	0	25	No	Yes	2.8
DSP-30025-111221	0	25	Yes	Yes	2.8
DSP-30030-111121	0	30	No	Yes	2.8
DSP-30030-111221	0	30	Yes	Yes	2.8
DSP-30220-111121	2	20	No	Yes	2.8
DSP-30220-111221	2	20	Yes	Yes	2.8
DSP-30225-111121	2	25	No	Yes	2.8
DSP-30225-111221	2	25	Yes	Yes	2.8
DSP-30230-111121	2	30	No	Yes	2.8
DSP-30230-111221	2	30	Yes	Yes	2.8
DSP-30520-111121	5	20	No	Yes	2.8
DSP-30520-111221	5	20	Yes	Yes	2.8
DSP-30525-111121	5	25	No	Yes	2.8
DSP-30525-111221	5	25	Yes	Yes	2.8
DSP-30530-111121	5	30	No	Yes	2.8
DSP-30530-111221	5	30	Yes	Yes	2.8

### PAPILOTOME, 3-LUMEN, NEEDLE KNIFE

DSP-30505-121111	0	5	No	No	2.8
DSP-30505-121211	0	5	Yes	No	2.8
DSP-30507-121111	0	7	No	No	2.8
DSP-30507-121211	0	7	Yes	No	2.8

Recommended guide wires 0.035": MTN-BM 89/45-A (straight), 600358-5 (straight), 600359-5 (J-Tip)  
 Recommended guide wires 0.025": MTN-BM 63/26-A (straight) and 600384-5 (straight)  
 Packaging unit: 2 pieces





# GUIDE WIRES

## THE RELIABLE CHOICE FOR ERCP

All guide wires are manufactured out of bending-resistant and torsion-proof Nitinol. Their hydrophilic coated tips, allow the wires to safely find their way even into areas and stenoses which are hard to reach. This is supported by the wire's high rigidity and controllability. Hence the guide wires are not only meant for sophisticated stent

placements, but are also perfectly suited for ERCP. The high radiopacity of the flexible hydrophilic tip facilitates exact stent placement under visual radiological control. Two different series are available: the Classic-series made in Germany and the Eco-series from MICRO-TECH as a cost-efficient alternative.

### SPECIFIC CHARACTERISTICS

- Non-kinking nitinol wire
- High level of rigidity and guidability
- Hydrophilic, atraumatic tip
- Working length: 4500 mm
- High level of radiopacity



### SUCCESSFUL IN PRACTICAL ROUTINE WORK

Bending resistance and rigidity account for the very good feeding properties of guide wires. In daily applications they convince by their precision, which is primarily guaranteed by the efficient transmission of the rotatory and translatory motion all the way to the tip of the wire, as applied by the surgical assistant. This makes it possible to reach into even anatomically difficult passages with ease. In addition, the tip of each wire can be perfectly seen in the X-ray control image, allowing for optimal stent positioning.



Endoscopic view



X-ray

### DISPENSER FOR EASY OPERATION

The wire can be easily ejected and retracted by means of this innovative dispenser. Owing to its compact design, the dispenser is handy and easy to operate. Rinsing the wire is also easy and fast when using the dispenser.

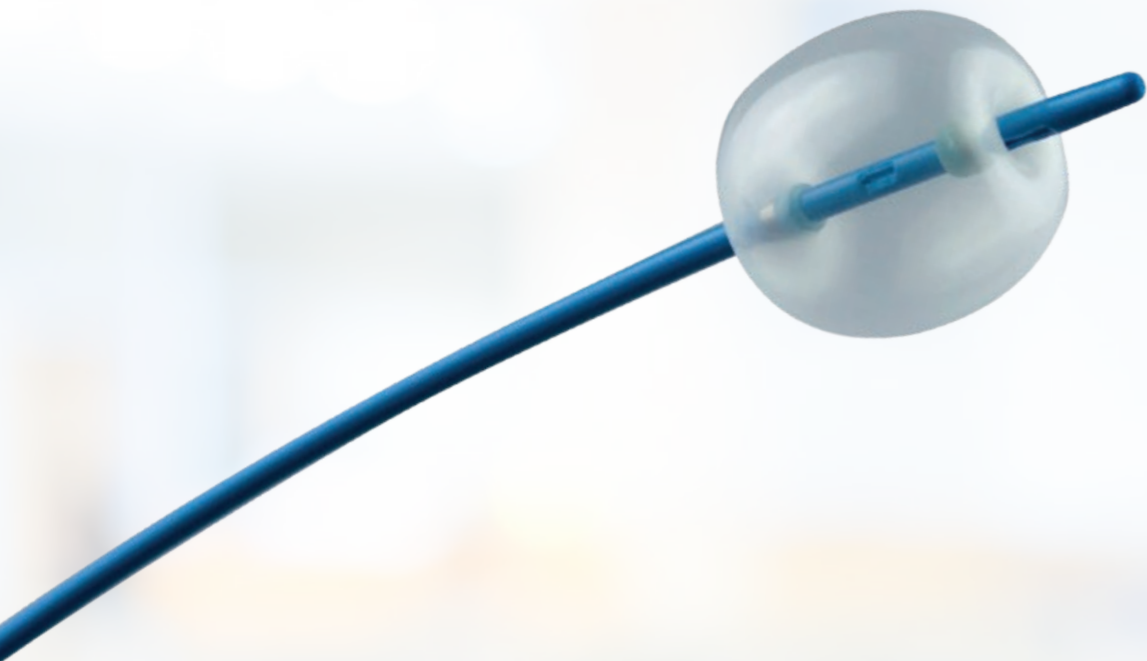


Dispenser guide wires

### SPECIFICATIONS

REF	Ø inches	Total length mm	Tip length mm	Tip form	Set-up	Covering
<b>CLASSIC GUIDE WIRE</b>						
600382-5	0.035"	4200	130	straight	hydrophilic, radiopaque	extra stiff
<b>ECO GUIDE WIRE</b>						
MTN-BM-89/45-A	0.035"	4500	60	straight	hydrophilic, radiopaque	blue-yellow covering
MTN-BM-89/45-A-J	0.035"	4500	60	J-form	hydrophilic, radiopaque	blue-yellow covering
MTN-BM-63/45-A	0.025"	4500	60	straight	hydrophilic, radiopaque	blue-yellow covering
MTN-BM-63/45-A-J	0.025"	4500	60	J-form	hydrophilic, radiopaque	blue-yellow covering
MTN-BM-53/45-A	0.021"	4500	60	straight	hydrophilic, radiopaque	blue-yellow covering
MTN-BM-45/45-A	0.018"	4500	60	straight	hydrophilic, radiopaque	blue-yellow covering

Packaging unit: Classic guide wire: 1 piece, Eco guide wire: 2 pieces



# STONE EXTRACTION BALLOONS

## ONE BALLOON, THREE DIAMETERS

MICRO-TECH's vast product range includes high-quality 3-lumen extraction balloons for reliable removal of small stones and sludge from the bile duct. The conical, atraumatic tip of the catheter makes for easy, precise positioning using the two x-ray markers. The cylindrical balloon itself is made of high-quality latex and can be expanded to three different diameters. A specially calibrated single-use

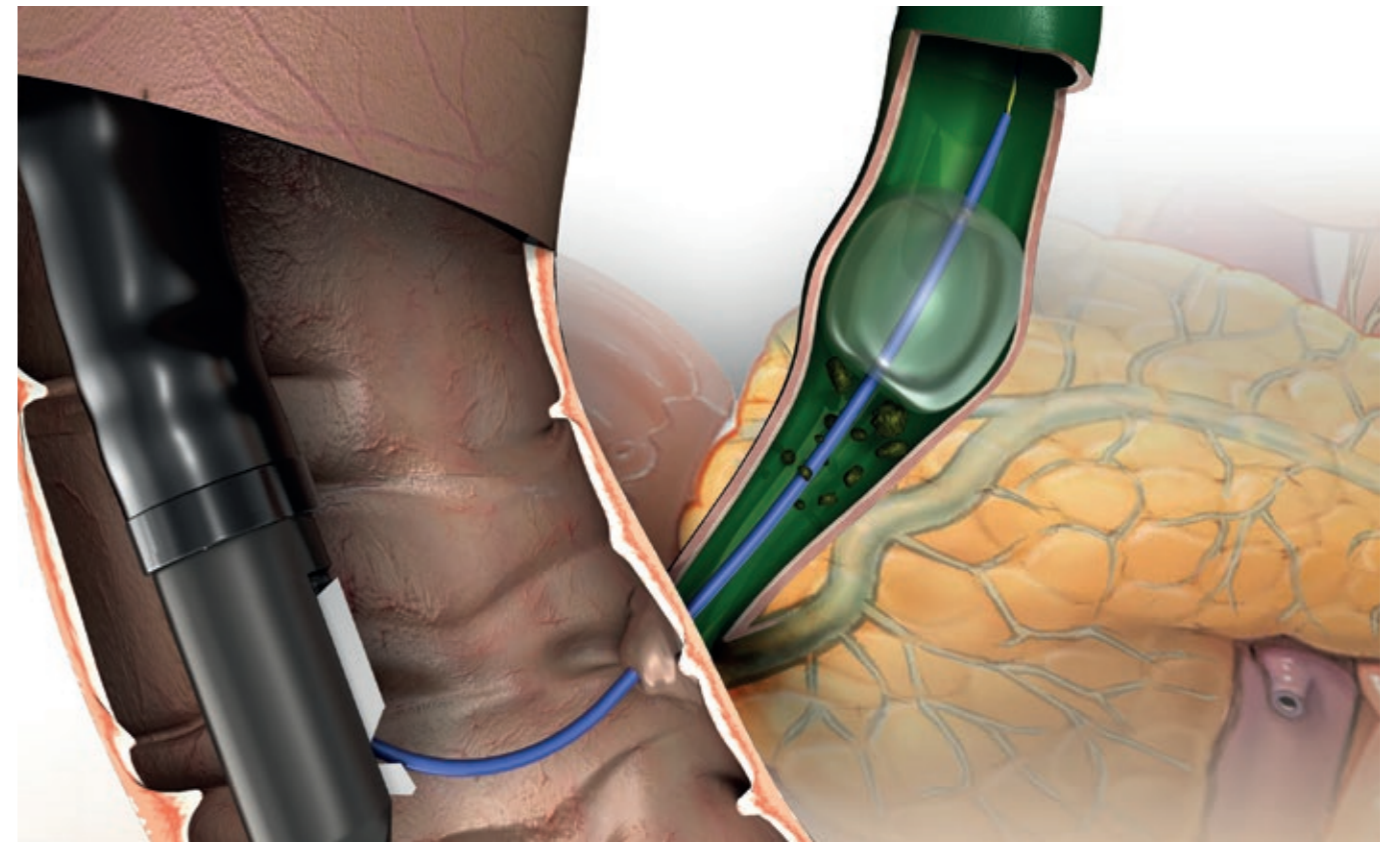
syringe is supplied for each balloon diameter. Following insufflation, the balloon surface lies flat against the bile duct wall, enabling efficient and complete cleaning of the bile duct. A separate lumen for a 0.035 inch guidewire and one for contrast media, provide for ease of handling and contrast injection.

### SPECIFIC CHARACTERISTICS

- 3-stage balloons
- One calibrated tip per diameter
- 3 lumens for insufflation, guidewire and contrast agent
- High X-ray visibility (radiopacity)



3-lumen stone extraction balloon from MICRO-TECH



### SPECIFICATIONS

REF	Ø inches	Total length mm	Tip length mm	Tip form	Set-up	Covering
<b>CLASSIC GUIDE WIRE</b>						
600382-5	0.035*	4200	130	straight	hydrophilic, radiopaque	extra stiff

REF	Injection	Lumen	Catheter Ø Fr.	Balloon Ø mm	Working length mm
<b>STONE EXTRACTION BALLOONS</b>					
SRB-T-9/12/15-20	Above (distal to the balloon)	3	7	9 / 12 / 15	2000
SRB-T-12/15/18-20	Above (distal to the balloon)	3	7	12 / 15 / 18	2000
SRB-T-15/18/21-20	Above (distal to the balloon)	3	7	15 / 18 / 21	2000
SRB-T-9/12/15-20-B	Below (proximal to the balloon)	3	7	9 / 12 / 15	2000
SRB-T-12/15/18-20-B	Below (proximal to the balloon)	3	7	12 / 15 / 18	2000
SRB-T-15/18/21-20-B	Below (proximal to the balloon)	3	7	15 / 18 / 21	2000

Recommended guidewires: MTN-BM 89/45-A (0.035 straight) and 600358-5 (0.035 straight)  
Packaging unit: 1 piece



# BASKET EXTRACTOR

## REMOVE FOREIGN OBJECTS SAFELY AND EFFECTIVELY

The extraction baskets from Bauer medical are not only suitable for stone extraction in the bile duct, but also for use in the upper and lower intestinal tract for the safe recovery

and removal of foreign bodies such as marbles, batteries or mouth fitting toys. The rotation of the Vario basket ensures safe and reliable recovery of the foreign body.

### SPECIFIC CHARACTERISTICS

- Fixed pre-determined breaking point
- Smooth wire with optimized gliding quality
- Ergonomic grip for improved tactile feeling
- Stone extractor basket with atraumatic tip
- Vario basket



Atraumatic tip gentle to working channel and mucosa



Highly mobile grip for precision insertion and extraction

### SPECIFICATIONS

REF	Form	Features	Ø basket mm
<b>DISPOSABLE BASKETS, PULL ROPE-LENGTH 200 CM</b>			
BK1-B10-25-23-200	Vario	multifilament, 150°-rotation, protection head	15 / 25
BK1-B10-30-23-200	Vario	multifilament, 150°-rotation, protection head	20 / 30
BK1-B20-20-23-200	Hexagonal	multifilament, 4 rope, protection head	20
BK1-B20-25-23-200	Hexagonal	multifilament, 4 rope, protection head	25
BK1-B20-30-23-200	Hexagonal	multifilament, 4 rope, protection head	30
BK1-B20-35-23-200	Hexagonal	multifilament, 4 rope, protection head	35
BK1-B21-35-23-200	Hexagonal	4 rope, half coiled	35
BK1-B22-20-23-200	Hexagonal	4 rope, full coiled	20
BK1-B22-25-23-200	Hexagonal	4 rope, full coiled	25
BK1-B22-30-23-200	Hexagonal	4 rope, full coiled	30
BK1-B22-35-23-200	Hexagonal	4 rope, full coiled	35
<b>DISPOSABLE GUIDE WIRE BASKETS, PULL ROPE-LENGTH 200 CM</b>			
BK1-B90-25-27-200	Combi-hexagonal	multifilament, retractable tip	15 / 25
<b>DISPOSABLE LITHOTRIPSY BASKETS, PULL ROPE-LENGTH 400 CM</b>			
LT1-B10-25-23-400	Vario	multifilament, 150°-rotation, retractable tip	15 / 25
LT1-B10-30-23-400	Vario	multifilament, 150°-rotation, retractable tip	20 / 30
LT1-B20-20-23-400	Hexagonal	multifilament, retractable tip	20
LT1-B20-25-23-400	Hexagonal	multifilament, retractable tip	25
LT1-B20-30-23-400	Hexagonal	multifilament, retractable tip	30
LT1-B20-35-23-400	Hexagonal	multifilament, retractable tip	35

Packaging unit: 5 pieces



# PLASTIC BILE DUCT STENTS

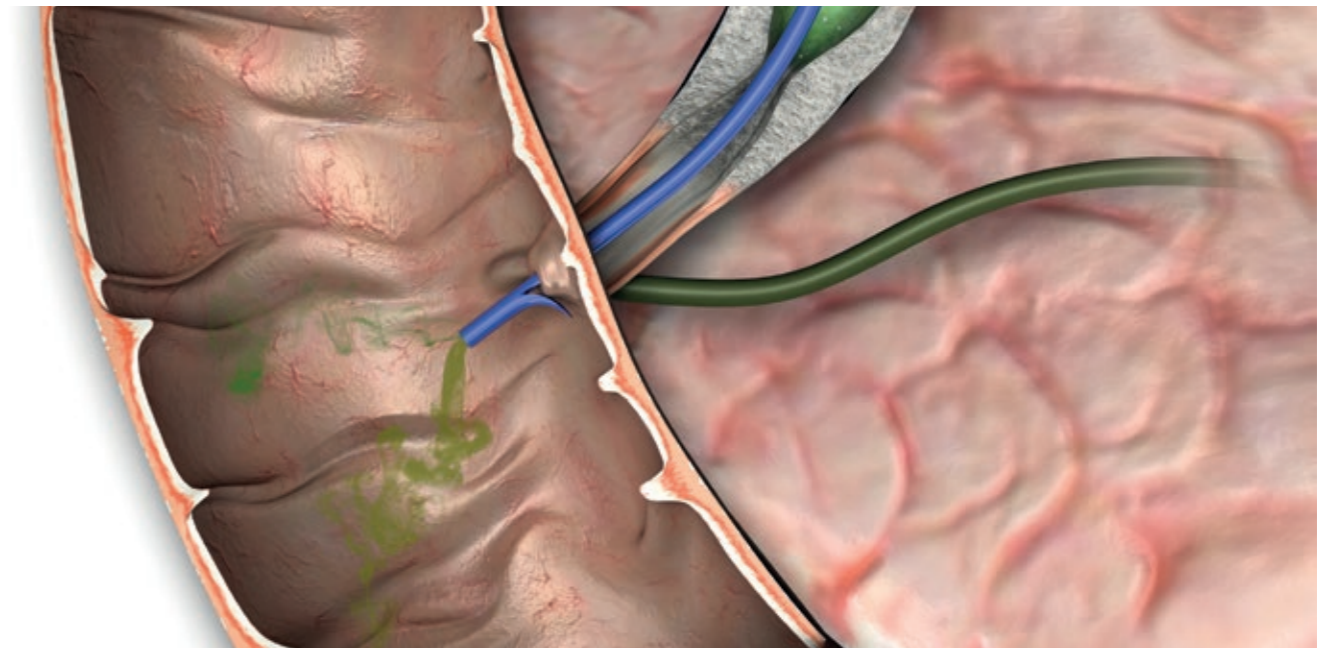
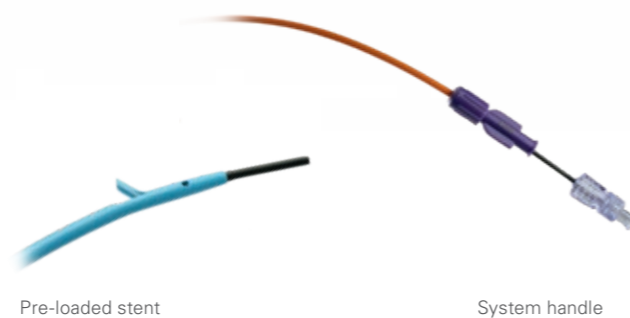
## MAXIMUM DRAINAGE, MAXIMUM HOLD

MICRO-TECH offers a comprehensive range of plastic stents for short and medium-term drainage in the bile duct. The stents are available in different shapes, lengths and diameters. Thus, the ideal stent is available for each indication. The high-quality PE-/PTFE-material of the stents ensures reliable drainage and adapts optimally

to the anatomy of the patient. Flaps at the ends of the stents also ensure a secure hold with minimal migration. For rapid and safe implantation, the stents are available both individually and on pre-loaded systems. In addition, MICRO-TECH also offers introduction-systems in all relevant sizes.

### SPECIFIC CHARACTERISTICS

- Different shapes: straight, curved, angled, pigtail, double-pigtail and christmas tree
- Optimum flow rate
- Ideal adaptation to anatomy
- Safe hold, minimal migration
- Available single-packed or pre-loaded on introduction-system
- High x-ray visibility



### SPECIFICATIONS

#### STENT STRAIGHT



- Shape: straight
- 2 flaps
- 2 side-holes
- X-ray visible
- Material: PE

Working length	Diameter bile duct prosthesis			
	7FR	8.5FR	10FR	11.5FR
5 cm	BPDS-31114-0705	BPDS-31114-0805	BPDS-31114-1005	BPDS-31114-1105
6 cm	BPDS-31114-0706	BPDS-31114-0806	BPDS-31114-1006	BPDS-31114-1106
7 cm	BPDS-31114-0707	BPDS-31114-0807	BPDS-31114-1007	BPDS-31114-1107
8 cm	BPDS-31114-0708	BPDS-31114-0808	BPDS-31114-1008	BPDS-31114-1108
9 cm	BPDS-31114-0709	BPDS-31114-0809	BPDS-31114-1009	BPDS-31114-1109
10 cm	BPDS-31114-0710	BPDS-31114-0810	BPDS-31114-1010	BPDS-31114-1110
11 cm	BPDS-31114-0711	BPDS-31114-0811	BPDS-31114-1011	BPDS-31114-1111
12 cm	BPDS-31114-0712	BPDS-31114-0812	BPDS-31114-1012	BPDS-31114-1112
13 cm	BPDS-31114-0713	BPDS-31114-0813	BPDS-31114-1013	BPDS-31114-1113
14 cm	BPDS-31114-0714	BPDS-31114-0814	BPDS-31114-1014	BPDS-31114-1114
15 cm	BPDS-31114-0715	BPDS-31114-0815	BPDS-31114-1015	BPDS-31114-1115

## SPECIFICATIONS

### STENT CURVED



- Shape: 15° curved
- 2 flaps
- 2 side-holes
- X-ray visible
- Material: PE

Working length	Diameter bile duct prosthesis			
	7FR	8.5FR	10FR	11.5FR
5 cm	BPDS-32114-0705	BPDS-32114-0805	BPDS-32114-1005	BPDS-32114-1105
6 cm	BPDS-32114-0706	BPDS-32114-0806	BPDS-32114-1006	BPDS-32114-1106
7 cm	BPDS-32114-0707	BPDS-32114-0807	BPDS-32114-1007	BPDS-32114-1107
8 cm	BPDS-32114-0708	BPDS-32114-0808	BPDS-32114-1008	BPDS-32114-1108
9 cm	BPDS-32114-0709	BPDS-32114-0809	BPDS-32114-1009	BPDS-32114-1109
10 cm	BPDS-32114-0710	BPDS-32114-0810	BPDS-32114-1010	BPDS-32114-1110
11 cm	BPDS-32114-0711	BPDS-32114-0811	BPDS-32114-1011	BPDS-32114-1111
12 cm	BPDS-32114-0712	BPDS-32114-0812	BPDS-32114-1012	BPDS-32114-1112
13 cm	BPDS-32114-0713	BPDS-32114-0813	BPDS-32114-1013	BPDS-32114-1113
14 cm	BPDS-32114-0714	BPDS-32114-0814	BPDS-32114-1014	BPDS-32114-1114
15 cm	BPDS-32114-0715	BPDS-32114-0815	BPDS-32114-1015	BPDS-32114-1115

## SPECIFICATIONS

### STENT LATERAL ANGLED



- Form: 45° lateral angled
- 2 flaps
- 2 side-holes
- X-ray visible
- Material: PE

Working length	Diameter bile duct prosthesis			
	7FR	8.5FR	10FR	11.5FR
5 cm	BPDS-33114-0705	BPDS-33114-0805	BPDS-33114-1005	BPDS-33114-1105
6 cm	BPDS-33114-0706	BPDS-33114-0806	BPDS-33114-1006	BPDS-33114-1106
7 cm	BPDS-33114-0707	BPDS-33114-0807	BPDS-33114-1007	BPDS-33114-1107
8 cm	BPDS-33114-0708	BPDS-33114-0808	BPDS-33114-1008	BPDS-33114-1108
9 cm	BPDS-33114-0709	BPDS-33114-0809	BPDS-33114-1009	BPDS-33114-1109
10 cm	BPDS-33114-0710	BPDS-33114-0810	BPDS-33114-1010	BPDS-33114-1110
11 cm	BPDS-33114-0711	BPDS-33114-0811	BPDS-33114-1011	BPDS-33114-1111
12 cm	BPDS-33114-0712	BPDS-33114-0812	BPDS-33114-1012	BPDS-33114-1112
13 cm	BPDS-33114-0713	BPDS-33114-0813	BPDS-33114-1013	BPDS-33114-1113
14 cm	BPDS-33114-0714	BPDS-33114-0814	BPDS-33114-1014	BPDS-33114-1114
15 cm	BPDS-33114-0715	BPDS-33114-0815	BPDS-33114-1015	BPDS-33114-1115

## SPECIFICATIONS

### STENT CENTRAL ANGLED



- Shape: 90° central angled
- 2 flaps
- 2 side-holes
- X-ray visible
- Material: PE

Working length	Diameter bile duct prosthesis			
	7FR	8.5FR	10FR	11.5FR
5 cm	BPDS-34114-0705	BPDS-34114-0805	BPDS-34114-1005	BPDS-34114-1105
6 cm	BPDS-34114-0706	BPDS-34114-0806	BPDS-34114-1006	BPDS-34114-1106
7 cm	BPDS-34114-0707	BPDS-34114-0807	BPDS-34114-1007	BPDS-34114-1107
8 cm	BPDS-34114-0708	BPDS-34114-0808	BPDS-34114-1008	BPDS-34114-1108
9 cm	BPDS-34114-0709	BPDS-34114-0809	BPDS-34114-1009	BPDS-34114-1109
10 cm	BPDS-34114-0710	BPDS-34114-0810	BPDS-34114-1010	BPDS-34114-1110
11 cm	BPDS-34114-0711	BPDS-34114-0811	BPDS-34114-1011	BPDS-34114-1111
12 cm	BPDS-34114-0712	BPDS-34114-0812	BPDS-34114-1012	BPDS-34114-1112
13 cm	BPDS-34114-0713	BPDS-34114-0813	BPDS-34114-1013	BPDS-34114-1113
14 cm	BPDS-34114-0714	BPDS-34114-0814	BPDS-34114-1014	BPDS-34114-1114
15 cm	BPDS-34114-0715	BPDS-34114-0815	BPDS-34114-1015	BPDS-34114-1115

## SPECIFICATIONS

### PIGTAIL DOUBLE



- Shape: Pigtail
- Double
- 4 side-holes
- X-ray visible
- Material: PE

Working length	Diameter bile duct prosthesis			
	7FR	8.5FR	10FR	11.5FR
5 cm	BPDS-31993-0705	BPDS-31993-0805	BPDS-31993-1005	BPDS-31993-1105
6 cm	BPDS-31993-0706	BPDS-31993-0806	BPDS-31993-1006	BPDS-31993-1106
7 cm	BPDS-31993-0707	BPDS-31993-0807	BPDS-31993-1007	BPDS-31993-1107
8 cm	BPDS-31993-0708	BPDS-31993-0808	BPDS-31993-1008	BPDS-31993-1108
9 cm	BPDS-31993-0709	BPDS-31993-0809	BPDS-31993-1009	BPDS-31993-1109
10 cm	BPDS-31993-0710	BPDS-31993-0810	BPDS-31993-1010	BPDS-31993-1110
11 cm	BPDS-31993-0711	BPDS-31993-0811	BPDS-31993-1011	BPDS-31993-1111
12 cm	BPDS-31993-0712	BPDS-31993-0812	BPDS-31993-1012	BPDS-31993-1112
13 cm	BPDS-31993-0713	BPDS-31993-0813	BPDS-31993-1013	BPDS-31993-1113
14 cm	BPDS-31993-0714	BPDS-31993-0814	BPDS-31993-1014	BPDS-31993-1114
15 cm	BPDS-31993-0715	BPDS-31993-0815	BPDS-31993-1015	BPDS-31993-1115

## SPECIFICATIONS

### PIGTAIL DISTAL



- Shape: Pigtail
- Distal
- 2 side-holes
- X-ray visible
- Material: PE

Working length	Diameter bile duct prosthesis	
	8.5FR	10FR
5 cm	BPDS-31196-0805	BPDS-31196-1005
6 cm	BPDS-31196-0806	BPDS-31196-1006
7 cm	BPDS-31196-0807	BPDS-31196-1007
8 cm	BPDS-31196-0808	BPDS-31196-1008
9 cm	BPDS-31196-0809	BPDS-31196-1009
10 cm	BPDS-31196-0810	BPDS-31196-1010
11 cm	BPDS-31196-0811	BPDS-31196-1011
12 cm	BPDS-31196-0812	BPDS-31196-1012
13 cm	BPDS-31196-0813	BPDS-31196-1013
14 cm	BPDS-31196-0814	BPDS-31196-1014
15 cm	BPDS-31196-0815	BPDS-31196-1015

## SPECIFICATIONS

### PIGTAIL PROXIMAL



- Shape: Pigtail
- Proximal
- 2 side-holes
- X-ray visible
- Material: PE

Working length	Diameter bile duct prosthesis	
	8.5FR	10FR
5 cm	BPDS-31916-0805	BPDS-31916-1005
6 cm	BPDS-31916-0806	BPDS-31916-1006
7 cm	BPDS-31916-0807	BPDS-31916-1007
8 cm	BPDS-31916-0808	BPDS-31916-1008
9 cm	BPDS-31916-0809	BPDS-31916-1009
10 cm	BPDS-31916-0810	BPDS-31916-1010
11 cm	BPDS-31916-0811	BPDS-31916-1011
12 cm	BPDS-31916-0812	BPDS-31916-1012
13 cm	BPDS-31916-0813	BPDS-31916-1013
14 cm	BPDS-31916-0814	BPDS-31916-1014
15 cm	BPDS-31916-0815	BPDS-31916-1015

## SPECIFICATIONS

### CHRISTMAS TREE



- Shape: Christmas Tree
- 4 flaps per end
- 2 side-holes
- X-ray visible
- Material: PTFE

Working length	Diameter bile duct prosthesis	
	8.5FR	10FR
5 cm	BPDS-13442-0805	BPDS-13442-1005
6 cm	BPDS-13442-0806	BPDS-13442-1006
7 cm	BPDS-13442-0807	BPDS-13442-1007
8 cm	BPDS-13442-0808	BPDS-13442-1008
9 cm	BPDS-13442-0809	BPDS-13442-1009
10 cm	BPDS-13442-0810	BPDS-13442-1010
11 cm	BPDS-13442-0811	BPDS-13442-1011
12 cm	BPDS-13442-0812	BPDS-13442-1012
13 cm	BPDS-13442-0813	BPDS-13442-1013
14 cm	BPDS-13442-0814	BPDS-13442-1014
15 cm	BPDS-13442-0815	BPDS-13442-1015

## INTRODUCER-SYSTEMS WITHOUT STENT

### SPECIFICATIONS



- One step introducer-system
- X-ray visible

New: Extended guide catheter

REF	Ø catheter	Guide catheter	Introducer length
BPDI-0740/22	7 FR	40 cm	220 cm
BPDI-0840/22	8.5 FR	40 cm	220 cm
BPDI-1040/22	10 FR	40 cm	220 cm
BPDI-1140/22	11.5 FR	40 cm	220 cm

## INTRODUCER-SYSTEMS WITH PRE-LOADED STENT

### SPECIFICATIONS

#### STENT STRAIGHT



- Shape: straight
- 2 flaps
- 2 side-holes
- X-ray visible
- Material: PE

REF	Ø catheter	Stent working/ total length	Introducer length
BPDS-31114-0805/22	8.5 FR	5 / 7 cm	220 cm
BPDS-31114-0807/22	8.5 FR	7 / 9 cm	220 cm
BPDS-31114-0809/22	8.5 FR	9 / 11 cm	220 cm
BPDS-31114-0811/22	8.5 FR	11 / 13 cm	220 cm
BPDS-31114-1005/22	10 FR	5 / 7 cm	220 cm
BPDS-31114-1007/22	10 FR	7 / 9 cm	220 cm
BPDS-31114-1009/22	10 FR	9 / 11 cm	220 cm
BPDS-31114-1011/22	10 FR	11 / 13 cm	220 cm

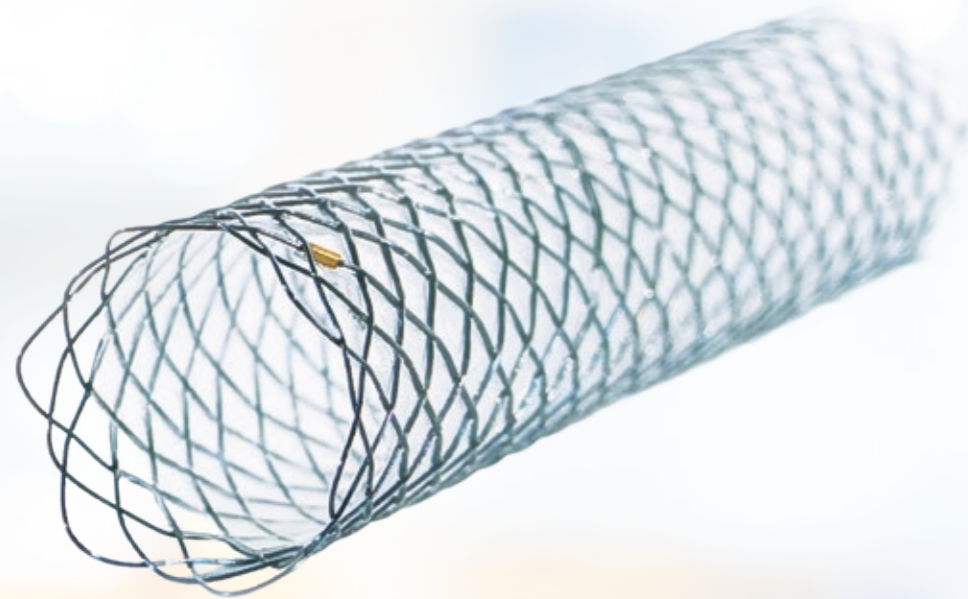
### SPECIFICATIONS

#### STENT CURVED



- Shape: 15° curved
- 2 flaps
- 2 side-holes
- X-ray visible
- Material: PE

REF	Ø catheter	Stent working/ total length	Introducer length
BPDS-32114-0805/22	8.5 FR	5 / 7 cm	220 cm
BPDS-32114-0807/22	8.5 FR	7 / 9 cm	220 cm
BPDS-32114-0809/22	8.5 FR	9 / 11 cm	220 cm
BPDS-32114-0811/22	8.5 FR	11 / 13 cm	220 cm
BPDS-32114-1005/22	10 FR	5 / 7 cm	220 cm
BPDS-32114-1007/22	10 FR	7 / 9 cm	220 cm
BPDS-32114-1009/22	10 FR	9 / 11 cm	220 cm
BPDS-32114-1011/22	10 FR	11 / 13 cm	220 cm



# BILIARY DUCT STENTS

## ALWAYS THE IDEAL SOLUTION

With the biliary stents manufactured by MICRO-TECH you will always make the ideal choice to bridge-graft biliary duct stenoses. The high expansion force of the Nitinol wire mesh accounts for an excellent positional stability. The resistant cover prevents the stent from growing into

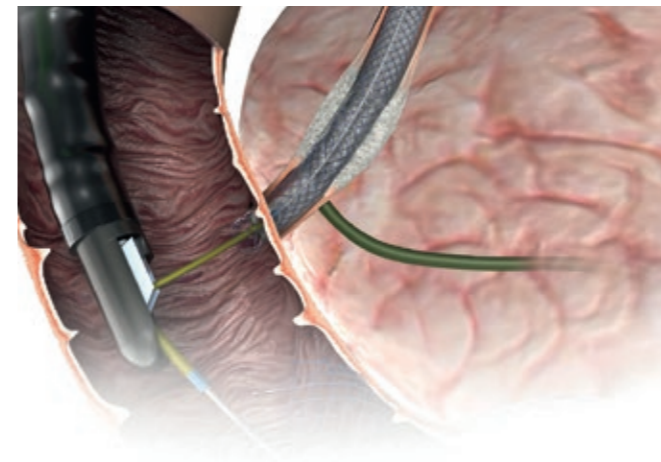
the tissue. The product range comprises two stent lines and offers a first-class solution that suits all requirements: the classic line and the platinum line. The comprehensive platinum line is especially distinguished by its extraordinary high radiopacity.

### SPECIFIC CHARACTERISTICS

- Self-expanding
- Available for TTS and PTCD
- Classic- and Platinum-Line
- Nitinol wire mesh with atraumatic ends
- Release under visual endoscopic control
- Enormous position stability
- Resistant and elastic cover
- High radiopacity
- Guiding wire passable to a maximum of 0.035 inches



X-ray marking



### CLASSIC-LINE. FIRST-CHOICE FOR ALL APPLICATIONS

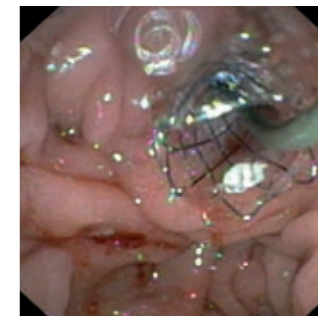
The Classic-Line is perfectly suited for all standard interventions. With two different approaches consisting of TTS and PTCD, it perfectly meets every requirement. These stents are made of highly flexible Nitinol wire mesh. Ten additional radiopaque markers account for the good visibility of our Classic-Line stents under fluoroscopy. Our product range comprises uncovered and partially covered stents.

### PTCD FOR PERCUTANEOUS ACCESS

In case of therapeutic interventions into the biliary duct, it sometimes occurs that a transpapillary access cannot be accomplished. In such cases MICRO-TECH offers PTCD systems (percutaneous transhepatic cholangio drainage) as the ideal solution.

### INTRODUCER SYSTEM FOR AN EXACT RELEASE

Additional radiopaque markers on the distal end of the introducer system and on the tip of the pusher catheter provide for additional orientation. In the endoscopic image, the tip of the pusher catheter can be unambiguously and easily distinguished from the proximal end of the stent. The permanent visual endoscopic control of the stent's proximal end considerably facilitates the exact release of the stent.



Removal of the introducer



Endoscopic positional control



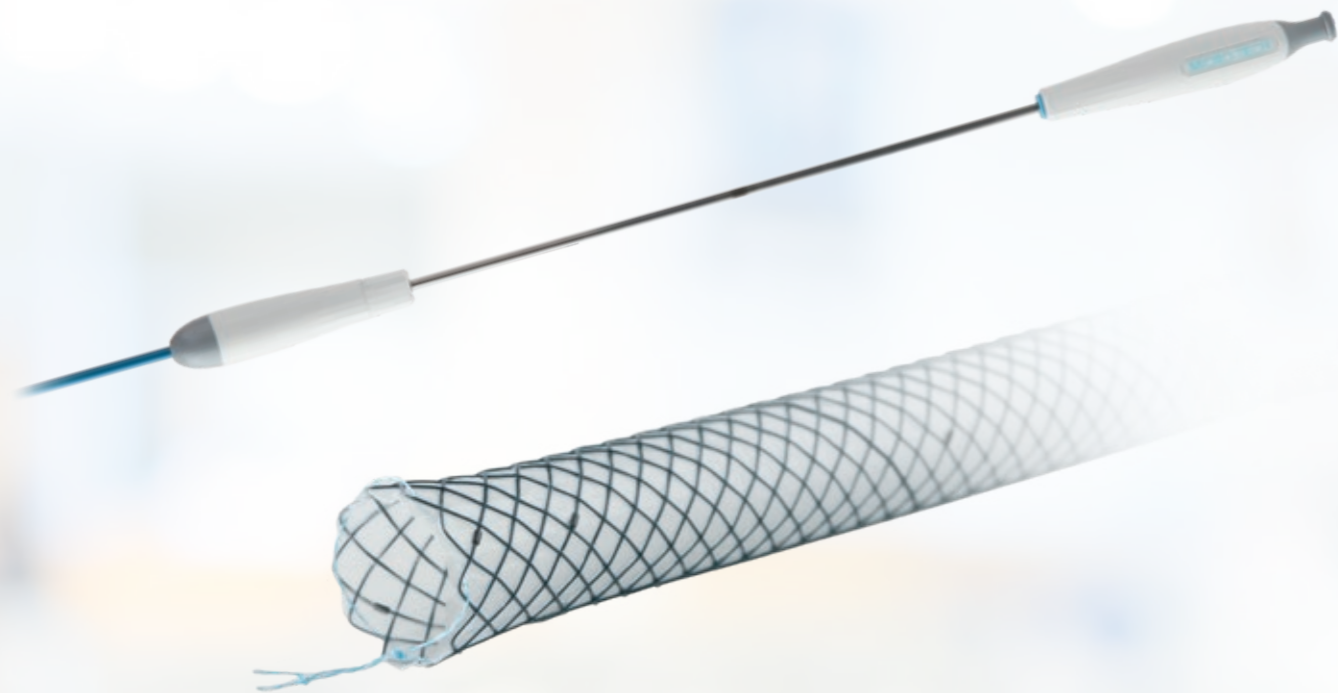
Released stent

### TTS STENTS FOR ROUTINE INTERVENTIONS

We offer uncovered as well as partially covered biliary duct stents in three different lengths. All stents can be placed through the working channel of the duodenoscope over the inserted guide wire (TTS – through-the-scope).

### TEN PLATINUM RADIOPAQUE MARKERS

In order to achieve improved visibility under X-ray control each stent bears a total of ten radiopaque markers: four markers located at each end, and two in the middle of the stent. The two radiopaque markers in the middle guarantee for the controllability of the stent's optimal position during deployment.



# BILIARY-STENT (GEN-II)

## HIGH PRECISION IN SLIM DESIGN

The next generation of MICRO-TECH's biliary stents takes the bridging of bile-duct stenosis to a new level. Thanks to its slim design, the system can be pushed almost frictionless through the endoscope and released easily in the bile-duct. A high flexible, specially developed Nitinol wire and the tantalum markers ensure optimal placement under

X-ray vision. The range of stents are available in lengths from 40 to 100 mm as well as fully, partially and uncovered stents. Uncovered and partially covered variants are produced with a "point-of-no-return" that allows to re-insert the stent into the sheath again and make the repositioning much easier.

### SPECIFIC CHARACTERISTICS

- Slimmer introducer set
- Point-of-no-return for uncovered and partially covered stents
- Stent system does not need to be flushed before application
- Stent with tantalum marker for good visibility under X-ray



Tantalum X-ray markings



Partly expanded

### SPECIFICATIONS

REF	Ø mm	Length mm	Working channel mm	Covering	
<b>STENTS STRAIGHT</b>					
NST03-001-10.040	10	40	3.7	Without	
NST03-001-10.060	10	60	3.7	Without	
NST03-001-10.080	10	80	3.7	Without	
NST03-001-10.100	10	100	3.7	Without	
NST03-002-10.040	10	40	3.7	Partial	
NST03-002-10.060	10	60	3.7	Partial	
NST03-002-10.080	10	80	3.7	Partial	
NST03-002-10.100	10	100	3.7	Partial	
NST03-004-10.040	10	40	3.7	Complete	
NST03-004-10.060	10	60	3.7	Complete	
NST03-004-10.080	10	80	3.7	Complete	
NST03-004-10.100	10	100	3.7	Complete	
<b>STENTS WITH EXTENDED TULIPS</b>					
NST03-111-10.040	10/13	40	3.7	Without	
NST03-111-10.060	10/13	60	3.7	Without	
NST03-111-10.080	10/13	80	3.7	Without	
NST03-111-10.100	10/13	100	3.7	Without	
NST03-112-10.040	10/13	40	3.7	Partial	
NST03-112-10.060	10/13	60	3.7	Partial	
NST03-112-10.080	10/13	80	3.7	Partial	
NST03-112-10.100	10/13	100	3.7	Partial	
NST03-114-10.040	10/13	40	3.7	Complete	
NST03-114-10.060	10/13	60	3.7	Complete	
NST03-114-10.080	10/13	80	3.7	Complete	
NST03-114-10.100	10/13	100	3.7	Complete	
	Ø mm/fr.	Length mm	Guide wire	RM <sup>*1</sup>	Lock <sup>*2</sup>
<b>INTRODUCER SYSTEM</b>					
	2.5 mm/7.5 fr., 2.8 mm/8.5 fr.	1800	0.035 inch	2	Yes

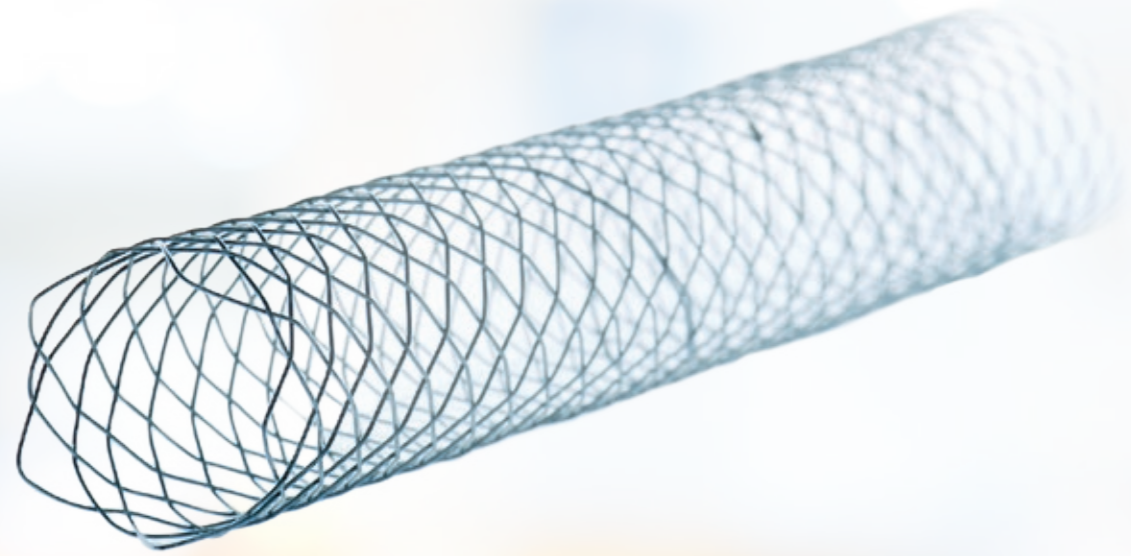
\*1 RM – radiopaque markings / \*2 Lock – secures the introducer system during transport, storage and insertion

Recommended guidewires:

Straight: MTN-BM-89/45-A, MTN-BM-63/45-A, MTN-BM-53/45-A, MTN-BM-45/45-A.

J-tip: MTN-BM-89/45-A-J, MTN-BM-63/45-A-J.





# PLATINUM-LINE

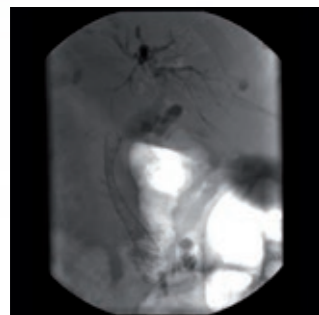
## PERFECT VISIBILITY FOR HIGHEST PRECISION

With its Platinum-Line, MICRO-TECH heralds a new generation of biliary duct stents. Under X-ray control, they are more visible than ever before, making their release even safer and precise. The secret of their extremely good visi-

bility lies in the specially developed Nitinol wire. Now with enhanced radiopacity, these platinum stents virtually glow in X-ray images. This accounts for extremely good visibility of the stent over its entire length under fluoroscopy.

### UNCHALLENGED: VISIBILITY UNDER X-RAY CONTROL

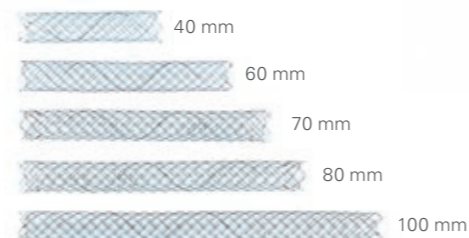
Apart from the innovative Nitinol wire, each stent of the Platinum-Line is distinguished by two additional radiopaque markers which are located in the middle of the stent. This enables pinpointing the exact position of the stent's center line while the stent is being released. Additional radiopaque markers on the introducer system also facilitate orientation.



Released Platinum-Line stent

### THE RIGHT CHOICE, WHETHER SHORT OR LONG

The biliary stents from MICRO-TECH are 10 mm wide throughout and differ in length according to the indication: a choice of five lengths is available, namely 40. 60. 70. 80 and 100 mm.



## SPECIFICATIONS

REF	Ø centre mm	Ø end mm	Length mm	Covering mm
<b>CLASSIC-LINE TTS</b>				
ST03-101.10.040	10	10	40	Without
ST03-101.10.060	10	10	60	Without
ST03-101.10.080	10	10	80	Without
ST03-101.10.100	10	10	100	Without
ST03-102.10.060	10	10	60	50
ST03-102.10.080	10	10	80	70
ST03-102.10.100	10	10	100	90
<b>CLASSIC-LINE PTC D</b>				
ST03-111.10.060	10	10	60	Without
ST03-111.10.080	10	10	80	Without
ST03-112.10.060	10	10	60	50
ST03-112.10.080	10	10	80	70
<b>PLATINUM-LINE TTS</b>				
ST03-104.10.040	10	10	40	Without
ST03-104.10.060	10	10	60	Without
ST03-104.10.080	10	10	80	Without
ST03-104.10.100	10	10	100	Without
ST03-105.10.040	10	10	40	30
ST03-105.10.060	10	10	60	50
ST03-105.10.080	10	10	80	70
ST03-105.10.100	10	10	100	90
ST03-106.10.040	10	10	40	40
ST03-106.10.060	10	10	60	60
ST03-106.10.080	10	10	80	80
<b>PLATINUM-LINE TTS, EXTENDED ENDS, EXTRACTION THREADS PRE-PAPILLARY</b>				
ST03-126.10.040	10	10	40	30
ST03-126.10.060	10	10	60	50
ST03-126.10.080	10	10	80	70
ST03-127.10.040	10	10	40	40
ST03-127.10.060	10	10	60	60
ST03-127.10.070	10	10	70	70
ST03-127.10.080	10	10	80	80

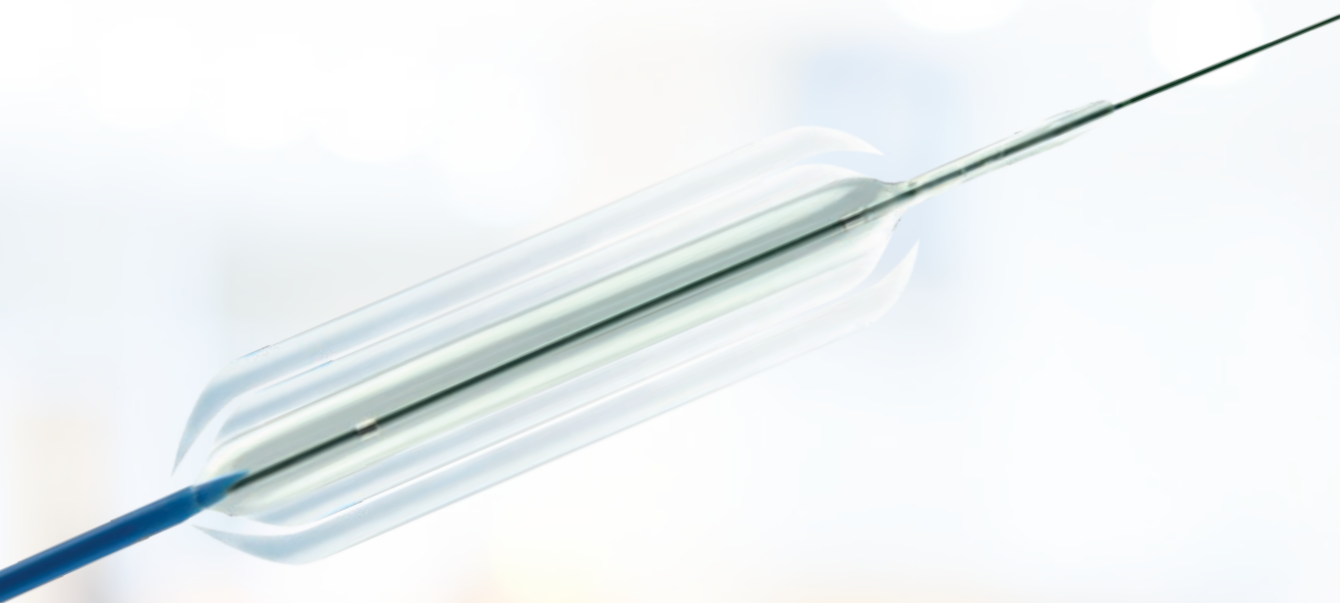
	Ø mm/fr.	Length mm	Guide wire	RM <sup>*1</sup>	IC <sup>*2</sup>	Lock <sup>*3</sup>
<b>INTRODUCER SYSTEM</b>						
ST03-101... (TTS)	2.7/8	1800	0.035 inch	2	Yes	Yes
ST03-102 + 103... (TTS)	3.0/9	1800	0.035 inch	2	Yes	Yes
ST03-111... (PTCD)	2.7/8	500	0.035 inch	2	Yes	Yes
ST03-112... (PTCD)	2.8/8.5	500	0.035 inch	2	Yes	Yes
ST03-126... (TTS)	3.0/9	1800	0.035 inch	2	Yes	Yes
ST03-127... (TTS)	3.3/10	1800	0.035 inch	2	Yes	Yes

Recommended guide wire (TTS): 600360-5 Alternative: 600358-5 with a longer tip

Recommended guide wire (Perkutan): 600371-5

\*1 RM – radiopaque markings / \*2 IC – irrigation channel / \*3 Lock – secures the introducer system during storage, transportation and introduction

Also as a special size or individual stent



# MULTI-STAGE DILATION BALLOONS

## THREE DIAMETERS, ONE BALLOON

The multi-stage dilation balloon from MICRO-TECH facilitates simple and reliable dilation of stenoses. Each balloon can be expanded to three different, fixed diameters for progressive dilation of stenosis in three pre-defined stages. The pressure is distributed evenly over the entire working length of the balloon at every diameter. The

rounded tips enable a good endoscopic view of the stenosis, even during dilation, ensuring controlled, safe intervention and good therapeutic success. Thanks to the preloaded stiffed wire with its flexible, hydrophilic, radiopaque tip, the balloons are readily introduced and are then rapidly deflated after successful dilation.

### SPECIFIC CHARACTERISTICS

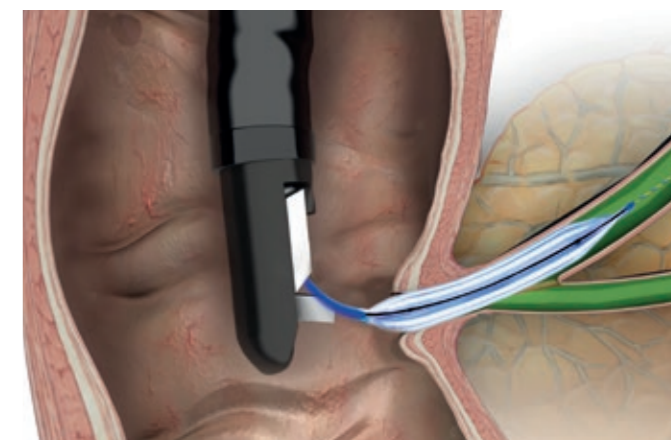
- Three different diameters with three separate pressure levels
- 2 X-ray markers on opposite ends to indicate the exact working length of the balloon
- Rounded Balloon shoulders for clear endoscopic view of the balloon's distal end
- Conical, atraumatic catheter tip
- Preloaded stiffed wire with hydrophilic, radiopaque tip



Separate openings for stiffed wire and insufflation

### SINGLE-USE INFLATION-INSTRUMENT

Sturdy construction and an ergonomic handle for easy control. With quick-lock mechanism for one-handed deflation, even under full pressure. The clear cylinder and the easy to read scale allow for a close look at the content and the amount. The exact gauge guarantees reliable pressure measurement.



### SPECIFICATIONS

REF	Content ml air/liquid	Max. pressure ATM	Feature		
<b>SINGLE-USE INFLATION-INSTRUMENT</b>					
BID-15-60-01	60	15	3-way-stopcock		
REF	Balloon Ø mm	Balloon 3-stagedilation pressure (atm)	Balloon length mm	Catheter Ø fr.	Catheter length mm
<b>MULTI-STAGE DILATION BALLOONS</b>					
MBD-AS-BB-2	6 / 7 / 8	3 / 6 / 10	30	7	2300
MBD-AM-BA-2	6 / 7 / 8	3 / 6 / 10	55	7	1800
MBD-AM-BB-2	6 / 7 / 8	3 / 6 / 10	55	7	2300
MBD-AL-BA-2	6 / 7 / 8	3 / 6 / 10	80	7	1800
MBD-BS-BB-2	8 / 9 / 10	3 / 5.5 / 9	30	7	2300
MBD-BM-BA-2	8 / 9 / 10	3 / 5.5 / 9	55	7	1800
MBD-BM-BB-2	8 / 9 / 10	3 / 5.5 / 9	55	7	2300
MBD-BL-BA-2	8 / 9 / 10	3 / 5.5 / 9	80	7	1800
MBD-CS-BB-2	10 / 11 / 12	3 / 5 / 8	30	7	2300
MBD-CM-BA-2	10 / 11 / 12	3 / 5 / 8	55	7	1800
MBD-CM-BB-2	10 / 11 / 12	3 / 5 / 8	55	7	2300
MBD-CL-BA-2	10 / 11 / 12	3 / 5 / 8	80	7	1800
MBD-DS-BB-2	12 / 13.5 / 15	3 / 4.5 / 8	30	7	2300
MBD-DM-BA-2	12 / 13.5 / 15	3 / 4.5 / 8	55	7	1800
MBD-DM-BB-2	12 / 13.5 / 15	3 / 4.5 / 8	55	7	2300
MBD-DL-BA-2	12 / 13.5 / 15	3 / 4.5 / 8	80	7	1800
MBD-EM-BA-2	15 / 16.5 / 18	3 / 4.5 / 7	55	7	1800
MBD-EM-BB-2	15 / 16.5 / 18	3 / 4.5 / 7	55	7	2300
MBD-EL-BA-2	15 / 16.5 / 18	3 / 4.5 / 7	80	7	1800
MBD-FM-BA-2	18 / 19 / 20	3 / 4.5 / 6	55	7	1800
MBD-FM-BB-2	18 / 19 / 20	3 / 4.5 / 6	55	7	2300
MBD-FL-BA-2	18 / 19 / 20	3 / 4.5 / 6	80	7	1800

Packaging unit: 1 piece / suitable for guide wires with 0.035"



# DILATION BALLOONS

## SIMPLY EXPAND RELIABLY AND EFFECTIVELY

The dilation balloons from MICRO-TECH stand for maximum quality. MICRO-TECH produces all the dilation balloons itself – using state-of-the-art European and American production technology. Two x-ray markings indicate the exact working length of the balloon, thereby ensuring its precise positioning. Under application of pressure, the

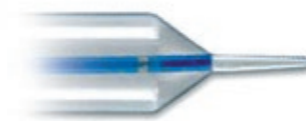
balloon is rapidly filled to acquire its predefined expansion width. Furthermore, the high-pressure design ensures the balloon retains its shape over the entire working length, thereby allowing optimum dilation success. All balloons are available as TTS (through-the-scope) systems up to a diameter of 18 mm and a catheter length of 1800 mm.

### SPECIFIC CHARACTERISTICS

- Dimensionally stable high pressure design
- 2 X-ray markers on opposite ends to indicate the exact working length of the balloon
- Separate guide wire and insufflation lumens
- Conical shaped catheter tip
- Rapid expansion
- Constant dilation over the entire length
- Guide-wire compatible up to 0.035 inches



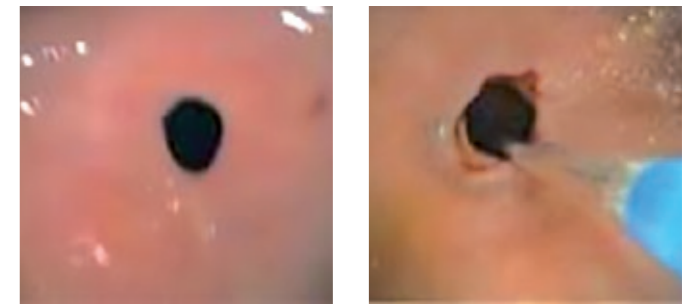
X-ray marking



Conical tip

### SUCCESSFUL IN PRACTICAL USE

Stenoses are effectively dilated using the MICRO-TECH dilation balloons. The balloon dilates the stenosis safely and gently and prepares the area to be treated in an optimum manner. The uniform distribution of pressure over the entire working length of the balloon and the outstanding dimensional stability during dilation guarantee excellent therapeutic success over the entire length of the stenosis.



Endoscopic control during dilation therapy

### SPECIFICATIONS

REF	Balloon Ø mm	Balloon length mm	Catheter Ø fr.	Catheter length mm	Channel Ø mm	Application
<b>TTS – DILATION BALLOONS</b>						
BDC-8/55-7/18	8	55	7	1800	2.8	Oesophagus/Bile duct
BDC-8/55-7/24	8	55	7	2400	2.8	Pylorus/Colon
BDC-10/55-7/18	10	55	7	1800	2.8	Oesophagus/Bile duct
BDC-10/55-7/24	10	55	7	2400	2.8	Pylorus/Colon
BDC-12/55-7/18	12	55	7	1800	2.8	Oesophagus
BDC-12/55-7/24	12	55	7	2400	2.8	Pylorus/Colon
BDC-16/55-7/18	16	55	7	1800	2.8	Oesophagus
BDC-16/55-7/24	16	55	7	2400	2.8	Pylorus/Colon
BDC-18/55-7/18	18	55	7	1800	2.8	Oesophagus
BDC-18/55-7/24	18	55	7	2400	2.8	Pylorus/Colon
BDC-20/55-7/18	20	55	7	1800	4.2	Oesophagus
BDC-20/55-7/24	20	55	7	2400	4.2	Pylorus/Colon
BDC-12/80-7/18	12	80	7	1800	2.8	Oesophagus
BDC-12/80-7/24	12	80	7	2400	2.8	Pylorus/Colon
BDC-16/80-7/18	16	80	7	1800	2.8	Oesophagus
BDC-16/80-7/24	16	80	7	2400	2.8	Pylorus/Colon
BDC-18/80-7/18	18	80	7	1800	2.8	Oesophagus
BDC-18/80-7/24	18	80	7	2400	2.8	Pylorus/Colon
BDC-20/80-7/18	20	80	7	1800	4.2	Oesophagus
BDC-20/80-7/24	20	80	7	2400	4.2	Pylorus/Colon
<b>ACHALASIE-BALLOONS</b>						
BDC-26/80-7/10	26	80	7	1000	–	Achalasia
BDC-30/80-7/10	30	80	7	1000	–	Achalasia
BDC-34/80-7/10	34	80	7	1000	–	Achalasia
<b>FIXED WIRE BALLOONS</b>						
FWB-06/80-6/18-M	6-7-8	80	6	1800	2.8	Upper/lower GI
FWB-08/80-6/18-M	8-9-10	80	6	1800	2.8	Upper/lower GI
FWB-10/80-6/18-M	10-11-12	80	6	1800	2.8	Upper/lower GI
FWB-12/80-6/18-M	12-13.5-15	80	6	1800	2.8	Upper/lower GI
FWB-15/80-6/18-M	15-16.5-18	80	6	1800	2.8	Upper/lower GI
FWB-18/80-6/18-M	18-19-20	80	6	1800	2.8	Upper/lower GI

Packaging unit: 1 piece / suitable for guide wires with 0.035\*

# CYTOLOGY BRUSHES

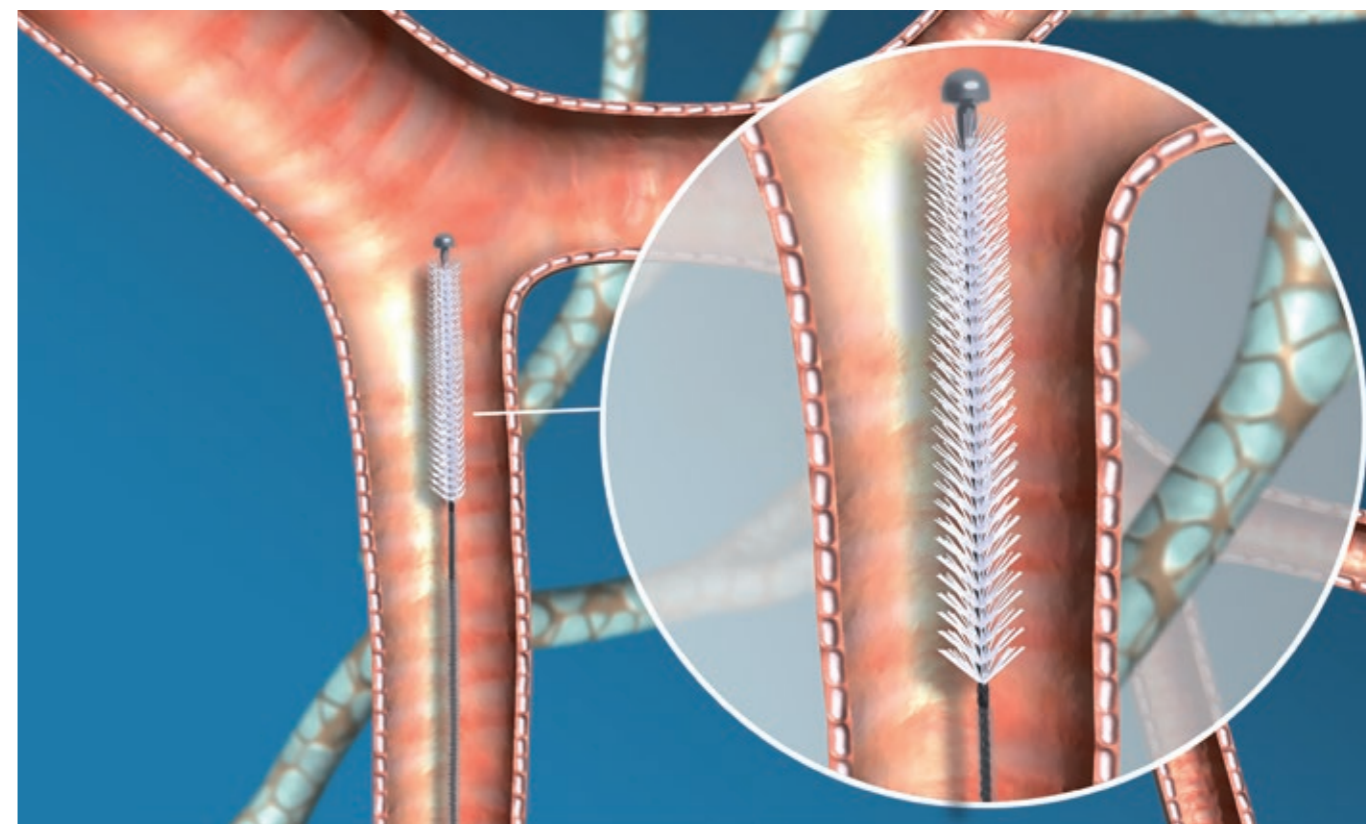
## THE SOLUTION FOR EASY AND SAFE CYTOLOGIC SMEARS

One established method of acquiring cell specimens consists of taking cytologic smears with cytology brushes: MICRO-TECH makes cytologic smearing efficient and safe, owing to a series of cytology brushes which are especially adapted to clinical requirements. The MICRO-TECH cytology brush can be push forward

easily to the desired site through the endoscope. The thin bristles enable a tissue-sparing cytologic smear. The plastic tube and the distal ball for closure protect the tissue sample when the device is retracted. A potential contamination of the sample or even a loss of sample is thus excluded.

### SPECIFIC CHARACTERISTICS

- Thin bristles for an optimal collection of cells
- Includes a plastic tube and a metal "ball shaped" head for tight closure
- For endoscopes with a minimum working channel diameter of 2.0 mm
- Sterile single packaging



### SAFE AND CONTROLLED INTRODUCTION

By using MICRO-TECH cytology brushes, you can access lesions that are hard to reach, easily and safely. The ergonomically shaped 3-ring handle also gives the user a secure and comfortable grip. Every movement is conveyed to the brush head, directly and with precision.



Ergonomically handle

### COMPREHENSIVE RANGE OF PRODUCTS

MICRO-TECH offers a great variety of cytology brush models which are suited for many application fields and comply with clinical specifications.

### SPECIFICATIONS

REF	Brush Ø mm	Length mm	Catheter Ø mm
<b>SINGLE-USE CYTOLOGY BRUSH</b>			
CYB-30S-24C	3.0	2400	2.3
CYB-40S-24C	4.0	2400	2.3

Packaging unit: 20 pieces



# NETS

## SAFELY REMOVE FOREIGN BODIES AND POLYPS

The MT net has been developed for the removal of polyps and foreign bodies and enables the reliable recovery of tissue samples. The net itself consists of a reinforced thread

material, which offers additional safety during recovery. Thanks to its unique dimensional stability and large opening, it facilitates work over several passes.

### SPECIFIC CHARACTERISTICS

- Large net
- High quality manufacture
- Comfortable 3-ring handle
- Easy and precise opening



Shape stable MT net

### SPECIFICATIONS

REF	Ø net mm	Snare	Working length mm	Ø working channel mm
<b>RETRIEVAL NET</b>				
NT-E-30/23-P	30	Oval	2300	2.8
NT-E-30/16-P	30	Oval	1600	2.8

Packaging unit: 2 pieces



# FOREIGN BODY FORCEPS

## QUALITY CRAFTED FOR HIGH PRECISION CONTROL

Due to the ergonomic 3-ring handle the one-time foreign body forceps can be used with ease and comfort. Each movement is passed exactly to the forceps – even in angled body regions. The calipers themselves are made

of high quality material and are perfectly manufactured. These qualities allow you to grab firmly, guaranteeing safe foreign body retrievals. The range includes forceps for gastroenterology, pneumology, paediatrics and urology.

### SPECIFIC CHARACTERISTICS

- High-quality processing
- Covering with markings
- Ergonomic 3-ring handle
- Easy and safe operation
- Different areas of application
- 3 types: Alligator, 2-1 teeth and Griffin
- Sterile and individually wrapped
- Type Griffin also for stent-extraction and -repositioning



Type Griffin: long alligator jaw with 2:1 teeth



Type: 2-1 teeth

### SPECIFICATIONS

REF	Type	Length mm	Ø mm
<b>DISPOSABLE FOREIGN BODY FORCEPS - GASTROENTEROLOGY</b>			
NGF03-11023230	2-1 teeth	2300	2.3
NGF13-11023230	Alligator	2300	2.3
NGF33-11023230	Griffin	2300	2.3
<b>DISPOSABLE FOREIGN BODY FORCEPS - PNEUMOLOGY, PAEDIATRICS, UROLOGY</b>			
NGF32-11018180	Griffin	1800	1.8
NGF32-11018120	Griffin	1200	1.8

Packaging unit: 10 pieces

Type Griffin is ideal and our recommendation for stent-extraction and -repositioning.



# DISPOSABLE BIOPSY FORCEPS

## NO COMPROMISES: QUALITY MEETS COMFORT

The wide choice of disposable biopsy forceps ensures that you are perfectly equipped for every application. MICRO-TECH offers forceps with diameters of 1.8 mm, 2.3 mm and 3.0 mm in addition to lengths of 120, 180, 230 and 260 cm. Whether they come with or without a spike, coated or uncoated, with standard or toothed

spoons – all models are characterized by their high reliability. The excellent cutting edge of our biopsy forceps allows you to take diagnostically conclusive tissue samples in a safe and easy manner. In addition to the comfort-forceps with soft grip, our range also includes the more cost-efficient eco-forceps (TRUBITE).

### SPECIFIC CHARACTERISTICS

- Reliability
- Very comfortable to use
- Diagnostically conclusive biopsies
- Wide product variety
- High quality riveted scissors joints
- Working channel-friendly design



Toothed spoon

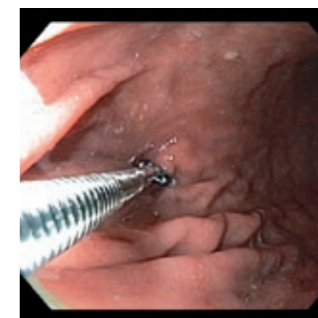


Scissors joint

### SUCCESSFUL IN PRACTICAL USE

The biopsy forceps perform in practice thanks to their ease of insertion and excellent mobility. The area to be examined can therefore be reached easily and rapidly. During tissue sampling, the forceps are outstanding for their accurate control and precise cut.

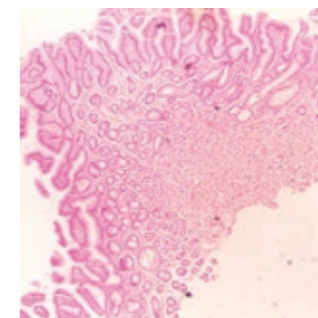
Due to their particularly sharp cutting edge, the forceps allow precise removal of biopsates. The amount of effort in this case is minimal. The biopsates acquired biopsy samples are large and therefore provide sufficient tissue for diagnostically conclusive findings.



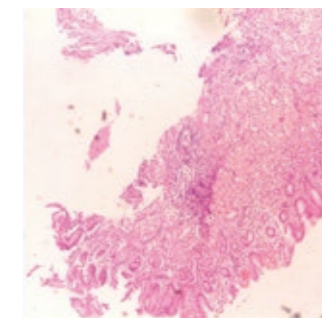
Biopsy removal



After biopsy removal



Biopsate removed with a toothed cutting edge



Biopsate removed with a smooth cutting edge



### GRIP IN A COMFORT- OR ECO-VERSION

With the grip of the forceps, the jaw section is perfectly under control. It offers you precise guidance even with sharply angled endoscopes. The soft, anti-slip rubber coating handle makes work safe and pleasant. Two different handles are available:

The comfort-version with the soft antiskid rubber makes handling safe and convenient to the eco-version with the plastic handle.

### JAW SECTIONS FOR EVERY INTERVENTION

Whether for biopsies or for removal of small polyps – the disposable biopsy forceps are perfectly equipped for any task with different jaw sections: with a smooth or a toothed cutting edge and with or without a spike. The jaw section can be precisely controlled and opened at a wide angle.





### HIGH QUALITY COATING

A choice of an uncoated and coated metal coil is available. Additional markings are provided on the coating to facilitate orientation during use.

### RAPID IDENTIFICATION

The forceps components have different colour codes for quick identification and choice of application field.

Handle:

- white – toothed cutting edge
- grey – smooth cutting edge

Jaw section protective cap:

- red – with spike
- yellow – without spike

Coating:

- grey – bronchial forceps  
Ø 1.8 mm, 120 cm long
- yellow – paediatric forceps  
Ø 1.8 mm, 180 cm long
- orange – gastric forceps  
Ø 2.3 mm, 180 cm long
- blue – colon forceps  
Ø 2.3 mm, 230 cm long
- orange or blue – macro forceps  
Ø 3.0 mm, 180 und 230 cm long

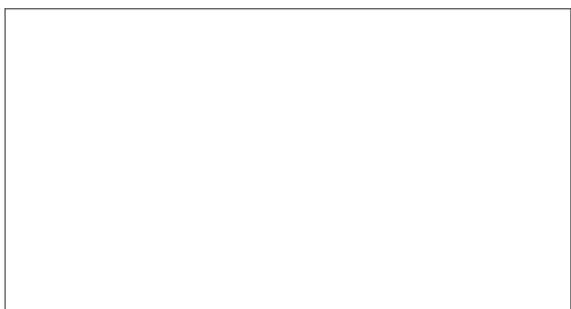
## SPECIFICATIONS

REF	Ø mm	Length mm	Spike	Covering	Jaw
<b>MACRO FORCEPS</b>					
NBF01-01030180	3.0	1800	No	Without	Standard
NBF01-01030230	3.0	2300	No	Without	Standard
NBF01-01130180	3.0	1800	Yes	Without	Standard
NBF01-01130230	3.0	2300	Yes	Without	Standard
NBF03-01030180	3.0	1800	No	Orange	Standard
NBF03-01030230	3.0	2300	No	Blue	Standard
NBF03-01130180	3.0	1800	Yes	Orange	Standard
NBF03-01130230	3.0	2300	Yes	Blue	Standard
<b>TRUBITE</b>					
EBF51-11023180	2.3	1800	No	Without	Standard
EBF51-11023230	2.3	2300	No	Without	Standard
EBF51-11123180	2.3	1800	Yes	Without	Standard
EBF51-11123230	2.3	2300	Yes	Without	Standard
EBF53-11023180	2.3	1800	No	Orange	Standard
EBF53-11023230	2.3	2300	No	Blue	Standard
EBF53-11123180	2.3	1800	Yes	Orange	Standard
EBF53-11123230	2.3	2300	Yes	Blue	Standard

Packaging unit: 10 pieces

Also available as hot-biopsy-forceps







**BIOPSY**  
**FORCEPS AND BRUSHES**



# DISPOSABLE BIOPSY FORCEPS

## NO COMPROMISES: QUALITY MEETS COMFORT

The wide choice of disposable biopsy forceps ensures that you are perfectly equipped for every application. MICRO-TECH offers forceps with diameters of 1.8 mm, 2.3 mm and 3.0 mm in addition to lengths of 120, 180, 230 and 260 cm. Whether they come with or without a spike, coated or uncoated, with standard or toothed

spoons – all models are characterized by their high reliability. The excellent cutting edge of our biopsy forceps allows you to take diagnostically conclusive tissue samples in a safe and easy manner. In addition to the comfort-forceps with soft grip, our range also includes the eco-forceps (TRUBITE).

### SPECIFIC CHARACTERISTICS

- Reliability
- Very comfortable to use
- Diagnostically conclusive biopsies
- Wide product variety
- High quality riveted scissors joints
- Working channel-friendly design



Toothed spoon

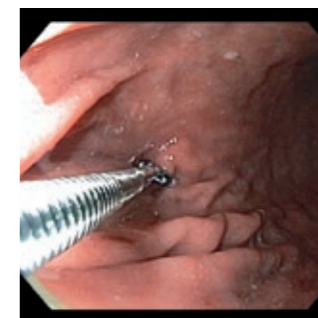


Scissors joint

### SUCCESSFUL IN PRACTICAL USE

The biopsy forceps perform in practice thanks to their ease of insertion and excellent mobility. The area to be examined can therefore be reached easily and rapidly. During tissue sampling, the forceps are outstanding for their accurate control and precise cut.

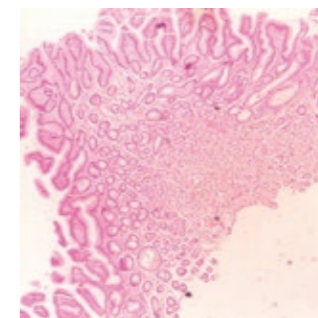
Due to their particularly sharp cutting edge, the forceps allow precise removal of biopsates. The amount of effort in this case is minimal. The biopsates acquired biopsy samples are large and therefore provide sufficient tissue for diagnostically conclusive findings.



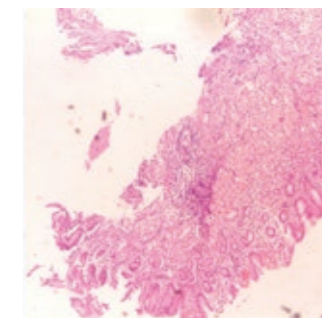
Biopsy removal



After biopsy removal



Biopsate removed with a toothed cutting edge



Biopsate removed with a smooth cutting edge



### GRIP IN A COMFORT- OR ECO-VERSION

With the grip of the forceps, the jaw section is perfectly under control. It offers you precise guidance even with sharply angled endoscopes. The soft, anti-slip rubber coating handle makes work safe and pleasant. Two different handles are available:

The comfort-version with the soft antiskid rubber makes handling safe and convenient or the eco-version with the plastic handle.

### JAW SECTIONS FOR EVERY INTERVENTION

Whether for biopsies or for removal of small polyps – the disposable biopsy forceps are perfectly equipped for any task with different jaw sections: with a smooth or a toothed cutting edge and with or without a spike. The jaw section can be precisely controlled and opened at a wide angle.





### HIGH QUALITY COATING

A choice of an uncoated and coated metal coil is available. Additional markings are provided on the coating to facilitate orientation during use.

### RAPID IDENTIFICATION

The forceps components have different colour codes for quick identification and choice of application field.

Handle:

- white – toothed cutting edge
- grey – smooth cutting edge

Jaw section protective cap:

- red – with spike
- yellow – without spike

Coating:

- grey – bronchial forceps  
Ø 1.8 mm, 120 cm long
- yellow – paediatric forceps  
Ø 1.8 mm, 180 cm long
- orange – gastric forceps  
Ø 2.3 mm, 180 cm long
- blue – colon forceps  
Ø 2.3 mm, 230 cm long
- orange or blue – macro forceps  
Ø 3.0 mm, 180 und 230 cm long

## SPECIFICATIONS

REF	Ø mm	Length mm	Spike	Covering	Jaw
<b>MACRO FORCEPS</b>					
NBF01-01030180	3.0	1800	No	Without	Standard
NBF01-01030230	3.0	2300	No	Without	Standard
NBF01-01130180	3.0	1800	Yes	Without	Standard
NBF01-01130230	3.0	2300	Yes	Without	Standard
NBF03-01030180	3.0	1800	No	Orange	Standard
NBF03-01030230	3.0	2300	No	Blue	Standard
NBF03-01130180	3.0	1800	Yes	Orange	Standard
NBF03-01130230	3.0	2300	Yes	Blue	Standard
<b>TRUBITE</b>					
EBF51-11023180	2.3	1800	No	Without	Standard
EBF51-11023230	2.3	2300	No	Without	Standard
EBF51-11123180	2.3	1800	Yes	Without	Standard
EBF51-11123230	2.3	2300	Yes	Without	Standard
EBF53-11023180	2.3	1800	No	Orange	Standard
EBF53-11023230	2.3	2300	No	Blue	Standard
EBF53-11123180	2.3	1800	Yes	Orange	Standard
EBF53-11123230	2.3	2300	Yes	Blue	Standard

REF	Ø mm	Length mm	Span width jaw mm	Jaw Ø mm	Spike	Covering	Jaw
<b>TECHBITE™</b>							
EBF33-11018120	2.0	1200	4.5	1.8	No	Grey	Standard
EBF33-11018180	2.0	1800	4.5	1.8	No	Orange	Standard
EBF33-11018230	2.0	2300	4.5	1.8	No	Blue	Standard
EBF33-11023120	2.8	1200	6.7	2.3	No	Grey	Standard
EBF33-11023180	2.8	1800	6.7	2.3	No	Orange	Standard
EBF33-11023230	2.8	2300	6.7	2.3	No	Blue	Standard
EBF33-11123120	2.8	1200	6.7	2.3	Yes	Grey	Standard
EBF33-11123180	2.8	1800	6.7	2.3	Yes	Orange	Standard
EBF33-11123230	2.8	2300	6.7	2.3	Yes	Blue	Standard
EBF43-11018120	2.0	1200	4.5	1.8	No	Grey	Serrated
EBF43-11018180	2.0	1800	4.5	1.8	No	Orange	Serrated
EBF43-11018230	2.0	2300	4.5	1.8	No	Blue	Serrated
EBF43-11023120	2.8	1200	6.7	2.3	No	Grey	Serrated
EBF43-11023180	2.8	1800	6.7	2.3	No	Orange	Serrated
EBF43-11023230	2.8	2300	6.7	2.3	No	Blue	Serrated
EBF43-11123120	2.8	1200	6.7	2.3	Yes	Grey	Serrated
EBF43-11123180	2.8	1800	6.7	2.3	Yes	Orange	Serrated
EBF43-11123230	2.8	2300	6.7	2.3	Yes	Blue	Serrated

Packaging unit: 10 pieces

Also available as hot-biopsy-forceps

# CYTOLOGY BRUSHES

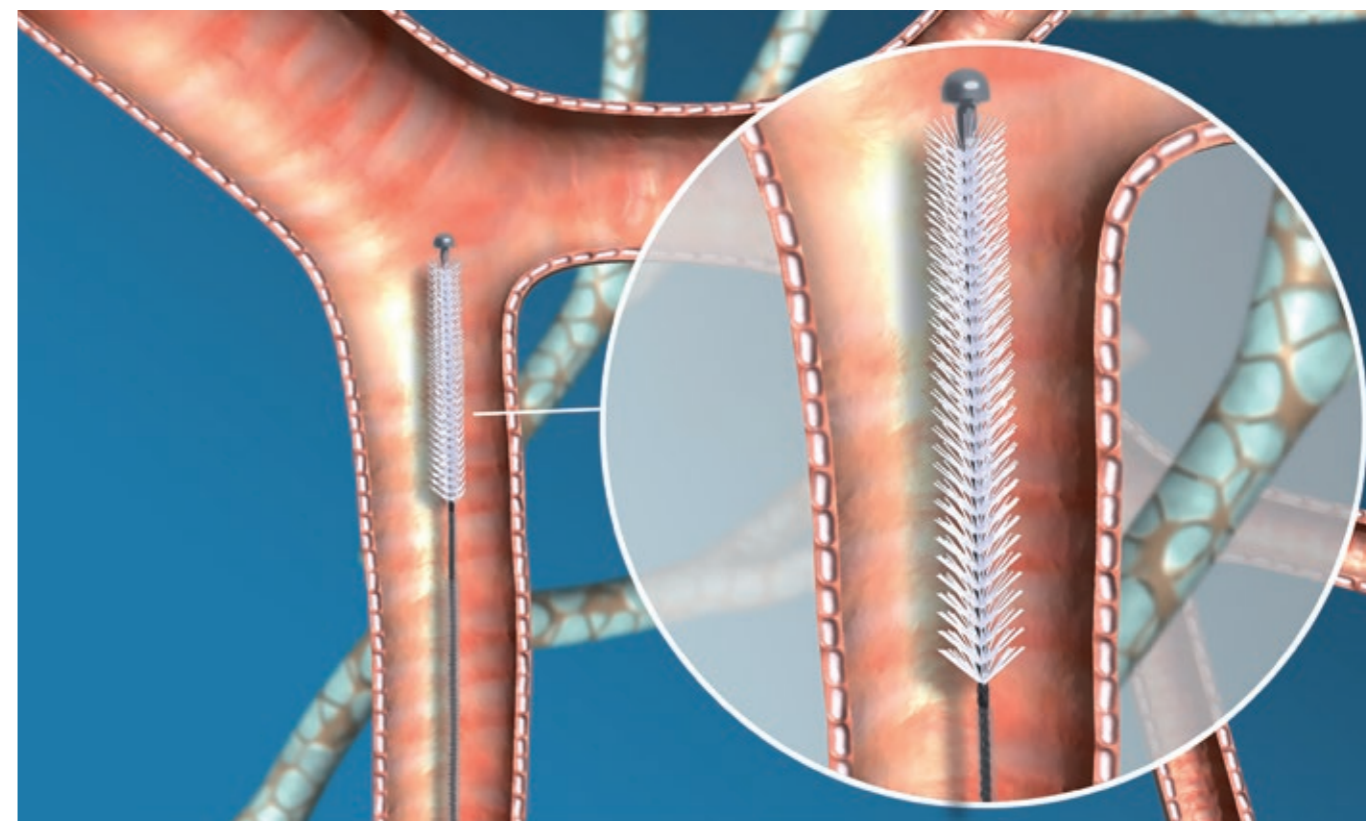
## THE SOLUTION FOR EASY AND SAFE CYTOLOGIC SMEARS

One established method of acquiring cell specimens consists of taking cytologic smears with cytology brushes: MICRO-TECH makes cytologic smearing efficient and safe, owing to a series of cytology brushes which are especially adapted to clinical requirements. The MICRO-TECH cytology brush can be push forward

easily to the desired site through the endoscope. The thin bristles enable a tissue-sparing cytologic smear. The plastic tube and the distal ball for closure protect the tissue sample when the device is retracted. A potential contamination of the sample or even a loss of sample is thus excluded.

### SPECIFIC CHARACTERISTICS

- Thin bristles for an optimal collection of cells
- Includes a plastic tube and a metal "ball shaped" head for tight closure
- For endoscopes with a minimum working channel diameter of 2.0 mm
- Sterile single packaging



### SAFE AND CONTROLLED INTRODUCTION

By using MICRO-TECH cytology brushes, you can access lesions that are hard to reach, easily and safely. The ergonomically shaped 3-ring handle also gives the user a secure and comfortable grip. Every movement is conveyed to the brush head, directly and with precision.



Ergonomically handle

### COMPREHENSIVE RANGE OF PRODUCTS

MICRO-TECH offers a great variety of cytology brush models which are suited for many application fields and comply with clinical specifications.

### SPECIFICATIONS

REF	Brush Ø mm	Length mm	Catheter Ø mm
<b>SINGLE-USE CYTOLOGY BRUSH</b>			
CYB-24S-12C	2.4	1200	1.8
CYB-30S-12C	3.0	1200	1.8
CYB-30S-24C	3.0	2400	2.3
CYB-40S-12C	4.0	1200	1.8
CYB-40S-24C	4.0	2400	2.3

Packaging unit: 20 pieces



# HOT BIOPSY FORCEPS

## REMOVE BIOPSIES AND STOP BLEEDING

MICRO-TECH unites several therapeutic working steps with its practical 2-in-1 solution. On one hand, the hot biopsy forceps serve as conventional hot forceps, removing small colonic polyps precisely and safely in active mode while taking diagnostically conclusive tissue samples in non-active mode. On the other hand, they serve as an

urgent measure for stopping bleeding, since the smallest lesions can be closed again at any time via coagulation. In this respect, MICRO-TECH's hot biopsy forceps suitability for treating patients with increased risk of bleeding is unparalleled.

### SPECIFIC CHARACTERISTICS

- Very comfortable to use
- High quality riveted scissors joints
- Puncture-proof PTFE insulation
- 3-ring handle with Olympus-HF-connection
- Excellent cutting properties

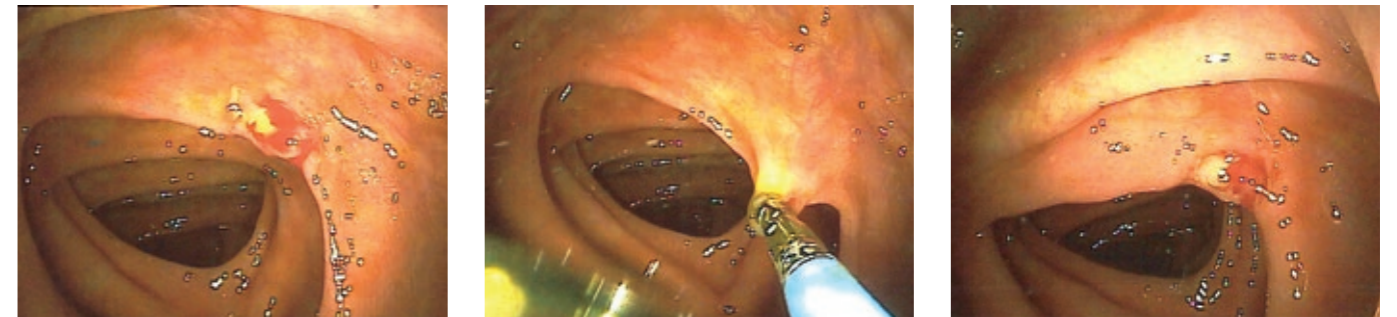


HF-connection

Scissors joint

### SUCCESSFUL IN PRACTICAL USE

The hot biopsy forceps from MICRO-TECH are particularly suitable for use in patients with an increased risk of bleeding. If bleeding occurs during tissue sampling or polyp removal, this can be treated immediately and stopped via coagulation current.



Hot biopsy forceps in endoscopic use



### TARGET-ORIENTED USE OF POWER

The 3-ring handle is equipped with a universal HF-connection for safe and controlled power supply. The PTFE insulation of the metal coil is impact-resistant and prevents current conductive contact with the tissue.

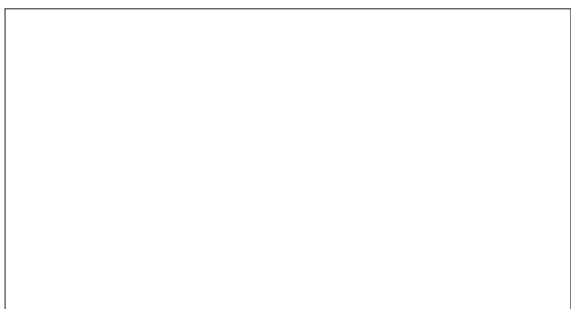
### SPECIFICATIONS

REF	Ø mm	Length mm	Spike	Insulated	Jaw
<b>HOT-BIOPSY FORCEPS WITH COATING</b>					
HBF05-11018120	1.8	1200	No	Yes	Standard
HBF05-11018180	1.8	1800	No	Yes	Standard
HBF05-11023180	2.3	1800	No	Yes	Standard
HBF05-11023230	2.3	2300	No	Yes	Standard

Packaging unit: 10 pieces

# NOTES







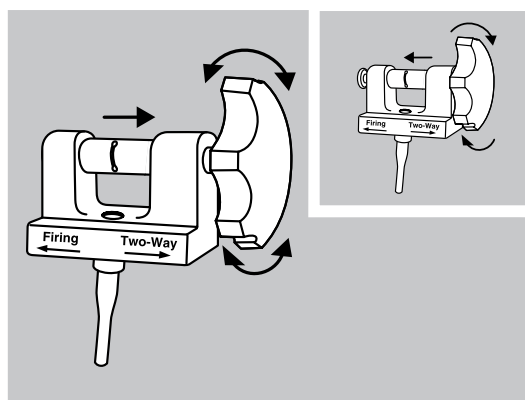
# 4,6,10 Shooter™

SAEED MULTI-BAND LIGATOR

## Scope Compatibility

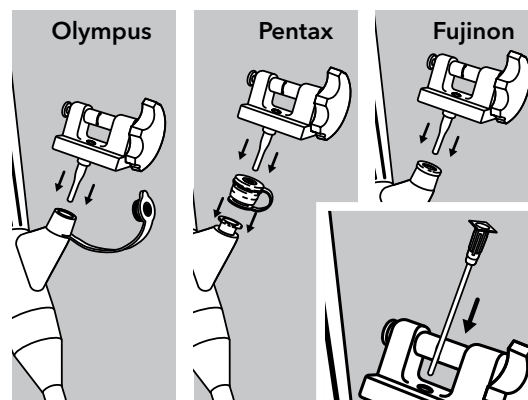
Order No.	Endoscope Outer Diameter
MBL-U-4	8.6 mm - 11.3 mm
MBL-U-6	
MBL-U-6-F	
MBL-U-10	
MBL-6-OV	9.5 mm - 11.5 mm
MBL-10	
MBL-4	9.5 mm - 13 mm
MBL-6	
MBL-4-XL	11 mm - 14 mm
MBL-6-XL	
MBL-6-XL-C	
MBL-6-XS	8.6 mm - 9.2 mm

## System Prep 1



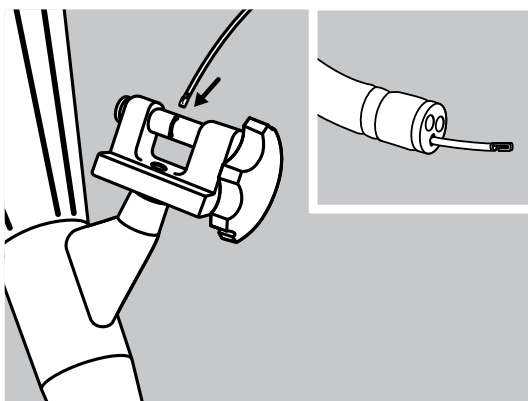
The firing position allows the handle to be rotated in the forward direction only. The **two-way position** allows the handle to rotate in both directions.

## System Prep 2



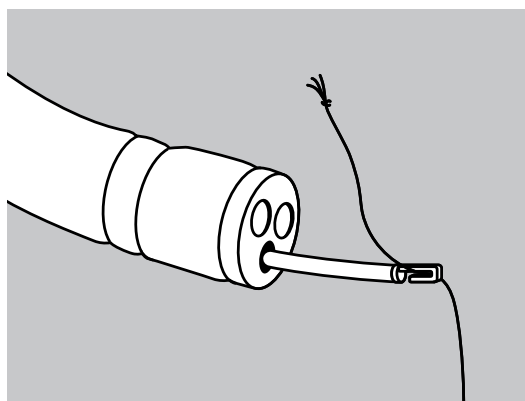
Insert the ligator handle into the endoscope accessory channel.  
**Note:** The irrigation adapter may be used to puncture the white self-sealing valve prior to introducing the loading catheter.

## System Prep 3



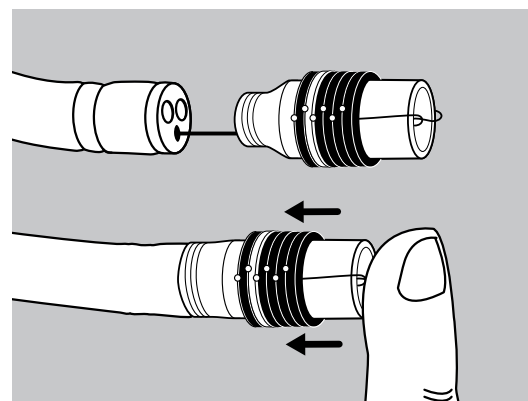
Introduce either end of the loading catheter through the white seal in the ligator handle and advance, in short increments, until it exits the tip of the endoscope.

## System Prep 4



Attach the trigger cord, leaving approximately 2 cm of cord between the knot and the hook. Withdraw the loading catheter and trigger cord up through the endoscope and out through the ligator handle.

## System Prep 5



Secure friction fit adapter of the barrel to the tip of the endoscope, advance as far as possible.  
**Note:** Failure to do so may result in barrel dislodgement. Avoid bands while pushing. When placing the barrel onto the distal end of the endoscope, ensure trigger cord does not become pinched between the barrel and endoscope.

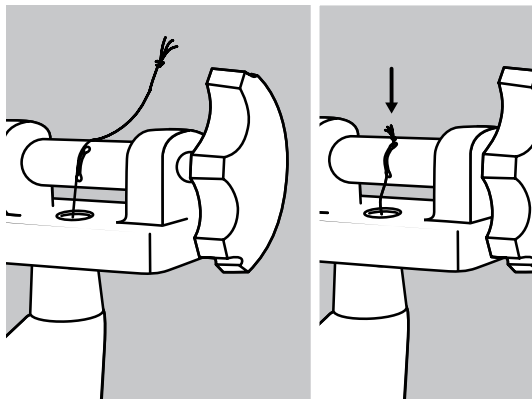
## Scope Compatibility Scale

Use the scope compatibility table above and scale below to determine which 4,6,10 Shooter offering fits your scope.

**Note:** If your endoscope does not fit into one of the specific diameters below, do not use with the 4,6,10 Shooter.

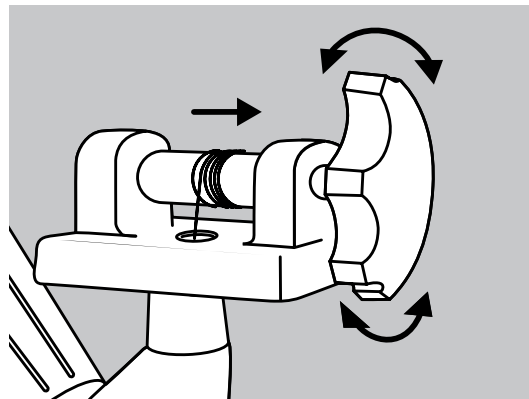


### System Prep 6



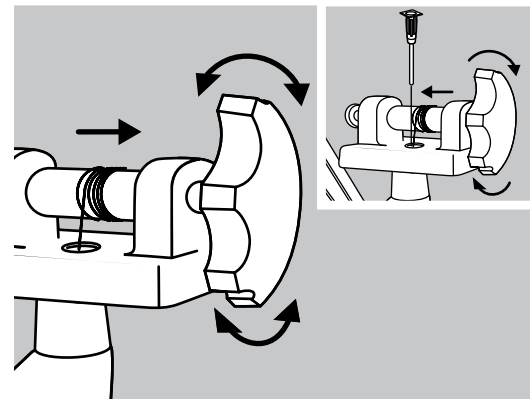
Place the trigger cord into the slot on the spool of the ligator handle and pull down until the knot is seated in the hole of the slot. The knot **must** be seated into the hole for the handle to function properly.

### System Prep 7



With the handle in the **two-way position**, slowly rotate the handle clockwise to wind the trigger cord onto the handle spool. **Note:** Care must be exercised to avoid deploying a band while winding the trigger cord.

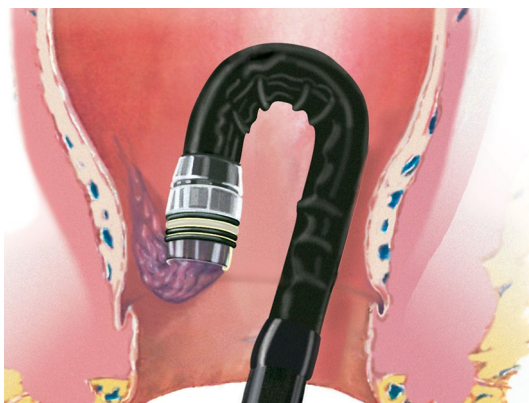
### Instructions for Ligation



With handle in the **two-way position**, introduce the endoscope. **After intubation** place the handle in the **firing position**. Visualize the selected varix or hemorrhoid and aspirate into the Opti-Vu barrel. Maintain suction, deploy the band by rotating the ligator handle clockwise until band release is **felt**. If irrigation is necessary, insert irrigation adapter into the white seal of the handle.

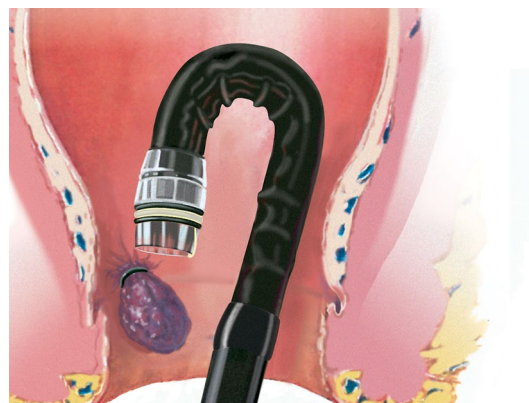
### Ligation of internal hemorrhoids

#### Step 1



With the Multi-Band Ligator handle in the **two-way position**, introduce the endoscope into the rectum. Retroflex the endoscope to visualize the selected internal hemorrhoid. **After** retroflexion, place the handle in the firing position. Aspirate the internal hemorrhoid into the Opti-Vu barrel. **Caution:** Ligation should only be performed on internal hemorrhoids located above the dentate line. Maintain suction on the internal hemorrhoid and deploy the band by rotating the ligator handle clockwise until band release is **felt**, indicating deployment.

#### Step 2



Release the suction button of the endoscope, insufflate air, then advance the endoscope slightly to release the ligated hemorrhoid. Repeat the ligation process as needed.

**Refer to current instructions for use for detailed information.**

### Scope Compatibility Scale

Use the scope compatibility table above and scale below to determine which 4,6,10 Shooter offering fits your scope.

**Note:** If your endoscope does not fit into one of the specific diameters below, do not use with the 4,6,10 Shooter.



14 mm



13 mm



11.5 mm



11.3 mm



11 mm



9.5 mm



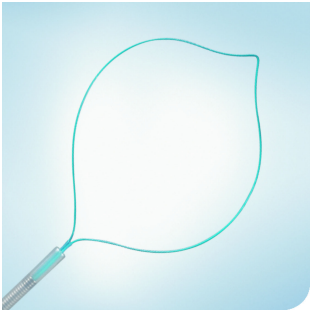
9.2 mm



8.6 mm



## Product-Information-Sheet

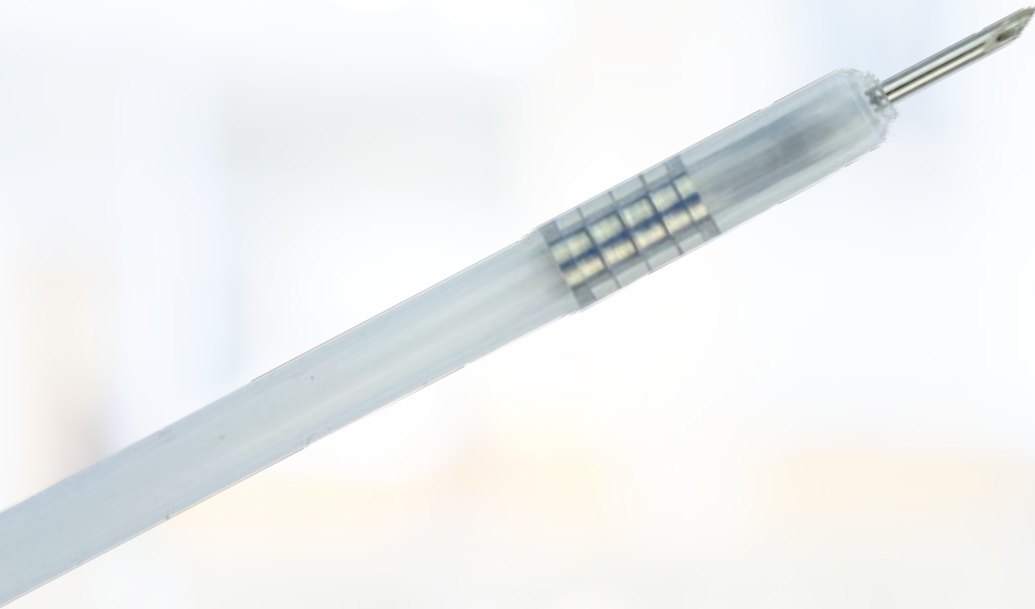
### Single-Use Ligation Device



- For polyp ligation prior to polypectomy
- Prevents post-polypectomy bleeding
- Preloaded loop, ready to use
- Integral handle



Article Name	Article number	Quantity	Min. Working Channel $\varnothing$	Working Length	Loop $\varnothing$	Area Compatibility
HX-400U-30	N5382130	5	 2.8 mm	2300 mm	30 mm	



# INJECTION NEEDLE

## RELIABLE AND SAFE TO THE TIP

The disposable MICRO-TECH's disposable injection needle facilitates clinical practice due to its ergonomic handle and especially sharp needle. The anti-skid design guarantees convenient control with just one hand. For

even more precise punctures the handle can be locked in several stages. When the needle is released, it snaps back into the catheter to avoid damage to the working channel.

### SPECIFIC CHARACTERISTICS

- Ergonomic anti-slip handle
- Adjustable pressure pad
- Automatic needle-feed
- Soft, atraumatic silicone head
- Needle with extremely sharp, precision cut
- Different needle diameters
- LL needle connector



Needle completely retracted

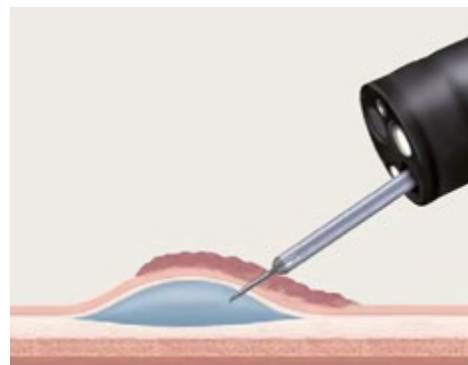


Compact ergonomical design

## SPECIFICATIONS

REF	Needle stroke mm	Needle Ø mm	Ø mm	Length mm
<b>INJECTION NEEDLE</b>				
IN12-195232302	5	19 G = 0.9 mm	2.3	2300
IN12-225232302	5	22 G = 0.7 mm	2.3	2300
IN12-255232302	5	25 G = 0.5 mm	2.3	2300

Packaging unit: 10 pieces



# SAFETY NEEDLE SN

## PRECISION WITH A UNIQUE SAFETY CONCEPT

With the injection needles from Bauer medical, punctures become safer and more precise than ever. On one hand, it is the newly developed handle with a particularly ergonomic shape which ensures a more tactile feeling and an audible locking. On the other hand, it is the special bevel-style grinding of the needle, allowing for highly

precise punctures, even under difficult conditions. Matching the specifications of the UVV for enhanced safety, this injection needle provides even more protection: Upon completion of the application, the proximal handle can be kinked at a defined breaking point. The forced retention of the needle in the tip of the catheter helps to avoid injuries.

## SPECIFIC CHARACTERISTICS

- Handle with tactile ergonomics
- Needle with special bevel-style grinding
- Distal protector head for needle tip
- CLICK noise when inserting and retracting the needle
- Unique safety concept for non-injurious disposal
- Needle diameter of 0.5 / 0.7 / 0.9 mm



Catchable needle with metal protector head



Ergonomical handle with defined breaking point

## SPECIFICATIONS

REF	Needle stroke mm	Needle Ø mm	Tube Ø mm	Length mm
<b>INJECTION NEEDLE SAFETY NEEDLE SN</b>				
SN1-I10-505-18-120	5	0.5	1.8	1200
SN1-I10-505-18-180	5	0.5	1.8	1800
SN1-I10-507-23-230	5	0.7	2.3	2300
SN1-I10-509-23-230	5	0.9	2.3	2300

Packaging unit: 10 pieces, relay prices on request



# GOLDKNIFE

## ONE INSTRUMENT, FOUR OPERATION STEPS

The GOLDKNIFE from MICRO-TECH allows for effective and reliable endoscopic submucosal dissections. Thanks to the combination of water-jet and electro-surgery, all working steps - marking, injection, dissection and coagulation - can be performed without switching instruments. The high-pressure water jet function creates a submuco-

sal pillow of water that allows replenishment at any time to protect against thermal and mechanical injuries. The handle facilitates a smooth and seamless extension of the knife. The balanced rigidity of the tube also enables precise knife guidance. Choose from three different needle tips with different cutting and coagulation properties.

## SPECIFIC CHARACTERISTICS

- Water-jet and electro-surgery in one
- Independent marking, injection, dissection and coagulation without switching instruments
- Replenishing the water pillow (optional) while dissecting and resecting
- 3 different knife types



Handle with rotatable coagulation connection



Type I: Great freedom of movement, versatile, higher level of difficulty



Type T: Ideal for removing under tension. Better coagulation options and optimized cutting direction while dissecting



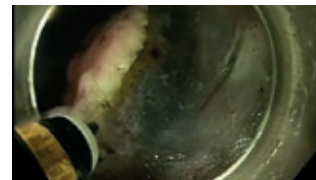
Type O: The safety model with a spherical, insulated tip



Marking



Injection water cushion



Dissection



Findings after removal

## SPECIFICATIONS

REF	Shape of the knife tip	Length of the knife tip mm	Working length mm	Working channel Ø mm
<b>GOLDKNIFE</b>				
MK-I-1-165	I	1.5	1650	2.8
MK-I-1-235	I	1.5	2350	2.8
MK-I-2-165	I	2	1650	2.8
MK-I-2-235	I	2	2350	2.8
MK-I-4-165	I	4	1650	2.8
MK-I-4-235	I	4	2350	2.8
MK-T-1-165	T	1.5	1650	2.8
MK-T-1-235	T	1.5	2350	2.8
MK-T-2-165	T	2	1650	2.8
MK-T-2-235	T	2	2350	2.8
MK-T-4-165	T	4	1650	2.8
MK-T-4-235	T	4	2350	2.8
MK-O-1-165	O	1.5	1650	2.8
MK-O-1-235	O	1.5	2350	2.8
MK-O-2-165	O	2	1650	2.8
MK-O-2-235	O	2	2350	2.8
MK-O-4-165	O	4	1650	2.8
MK-O-4-235	O	4	2350	2.8

Packaging unit: 1 piece

# BACTRYL™ SPRAY | BACTRYL™ WIPES

Disinfectant and Cleaner





# BACTRYL™ DISINFECTANT

Powerful disinfectant and surface cleaner, available in both spray and wipes

Ready-to-use cleaning and disinfecting agent with bactericidal, virucidal, fungicidal, yeasticidal and mycobactericidal properties on surfaces and on invasive and non-invasive Medical Devices. It is a class IIb medical device.



## Effective cleaning and disinfection

- Tested by two accredited laboratories and approved by independent experts.<sup>1,2</sup>
- Double action in one product, cleaning and disinfection, thanks to the combination of quaternary ammonium compound and chlorhexidine.
- Meets all EU standards (ISO EN 14885)
- Registered on the VAH-List of Disinfectants (The Association for Applied Hygiene, Germany)
- Effective on enveloped viruses, including the viruses of the Coronaviridae family

## Tested compatibility

- Compatible with a wide range of materials, including HDPE, Teflon, PVC, PET, silicone, neoprene rubber, and metals such as aluminum and stainless steel
- Can be used with invasive and non-invasive devices
- Gentle and safe for surfaces. Neutral pH.



**Safe for surfaces in medical, endoscopic, and dental facilities,** including invasive and non-invasive devices, instruments, accessories and equipment.



## Safe and easy to use

- Ready to use—just spray and wait, or spray and wipe for faster action
- Safe for operators, contains no carcinogenic, mutagenic, or toxic ingredients
- No bleach, no aldehydes, no phenols
- Broad spectrum of application throughout your medical or dental site

## Rapid and lasting action

- Disinfectant in 1 minute on bacteria, yeast and enveloped viruses (in compliance with EN 14885).
- Disinfectant in 30 seconds on bacteria and yeast if rubbed on with a towel/cloth (EN 16615).
- Fungicidal and Mycobactericidal activity between 2-10 minutes according to the stains.

# BACTRYL™ Disinfectant meets all prescribed European regulations for a wide spectrum of action. In compliance with EN 14885 and EN 16615 (surface disinfectant)

## DISINFECTANT ACTIVITY

ACTIVITY	NORM
Bactericidal*	EN 13727, EN 13697, EN 16615 Pseudomonas aeruginosa, Staphylococcus aureus, E. coli, Enterococcus hirae, Salmonella enterica typhimurium, Salmonella choleraesuis, Proteus mirabilis.
Fungicidal/Yeasticidal*	EN 13624, EN 13697, EN 16615 Candida albicans, Aspergillus niger, Trichophyton mentagrophytes
Mycobactericidal	EN 14348 M. smagmatis, M. avium, M. terrae
Virucidal**	EN14476 (HIV,HBV, HCV), DVV/RKI (enveloped viruses)** BVDV-Vaccinia Virus Strain Ankara HIV, HBV,HCV e influenza viruses.

\* tested according to requirements and methods for VAH Certification of Chemical Disinfection procedures.

\*\* validated in external lab in according to the Guideline of the Robert-Koch-Institute RKI (German Federal Health Authority) and the Deutsche Vereinigung zur Bekämpfung der Viruserkrankungen DVV (German Registered Association for Combating Viral Diseases).

## ORDERING INFORMATION

PART NUMBER	DESCRIPTION	UNITS PER BOX
500046	Bactryl Spray, Bottle of 1000ml	4 bottles
500047	Bactryl Wipes, Tube with 110 wipes	6 tubes

**Bench tested and confirmed with two independent labs.**

**Tests performed in clean and dirty conditions.**

**Recommended for use with Cantel capital equipment.**

Use with confidence on Cantel equipment such as: CLEANASCOPE™ System Carts, CLEANASCOPE™ System Trays, SURESTORE™ Endoscope Storage & Transportation, and ENDODRY™ Drying and Storage Systems, ISA™ Endoscope Reprocessor, ADVANTAGE PLUS™ Endoscope Reprocessor, ADVANTAGE PLUS™ Pass-Thru Endoscope Reprocessor, RAPIDAER™ Endoscope Reprocessor along with a wide range of other health care cleaning and disinfection applications.



## THE COMPLETE CIRCLE OF PROTECTION

As the global vanguard in infection prevention, **only Cantel delivers the Complete Circle of Protection**, a full-value, proactive partnership dedicated to helping you remove risk, streamline operational efficiencies and optimize your success.

### References

1. H.P. Werner. HygCen Germany. (2018, February). Test report SN 24115 of 2017-02-27.
2. F.A. Pitten. HygCen Germany. (2018, June). Test report PL 18-46 180615

BACTRYL™, CLEANASCOPE™, SURESTORE™, ENDODRY™, ISA™, ADVANTAGE PLUS™, RAPIDAER™ and ENDODRY™ are trademarks of Cantel Medical Corp and its affiliates. Marks not registered in all jurisdictions.

[www.cantelmedical.eu](http://www.cantelmedical.eu)

Global Headquarters | p: +1.973.890.7220

### TO PLACE AN ORDER

Medivators B.V. | p: +31455471471 (customer service) e: CSNL@medivators.com  
Cantel Germany GMBH | p: +4921190980750 e: CSDE@cantelmedical.de  
Cantel Medical (Italy) srl | p: +39069145399 e: info@cantelmedical.it



## BACTRYL SPRAY

### Instrucțiuni de folosire

#### SOLUȚIE DE CURATARE ȘI DEZINFECTIE PENTRU SUPRAFEȚE ȘI DISPOZITIVE MEDICALE INVAZIVE ȘI NEINVAZIVE

Descriere: Detergent și dezinfectant gata de utilizare, bactericid, virucid, levuricid, fungicid, microbactericid pentru suprafețe și dispozitive medicale invazive și neinvazive.

**Compoziție:** clorură de benzalconiu g <1 - Digluconat de clorhexidină g <1 - Isazone© g 0,001, coformulanți și apă purificată q.s. la 100 ml.

Proprietăți microbiologice: soluție de curățare și dezinfectie, gata de utilizare pentru suprafețe și dispozitive medicale într-un 1 minut (în conformitate cu EN14885 - dezinfectie pe suprafețe) și 30 de secunde prin frecare cu șervețel/laveta UN 16615).

**BACTERICID, LEVURICID și VIRUCID** (virusuri incapsulate): 1 minut. **FUNGICID** (cu acțiune mecanică) și **MICROBACTERICID** : 5 minute.

Mod de utilizare: se utilizează ca atare fără diluare. După ce ați îmbrăcat echipamentele de protecție personală (DPI) aplicați cu pulverizatorul soluția Bactryl pe suprafețe și pe dispozitive medicale și așteptați timpul de contact prevăzut. Alternativ, întindeți produsul uniform pe suprafață cu o laveta/șervețel și așteptați timpul prevăzut. Clătiți dispozitivele medicale înainte de utilizare dacă acest lucru este prevăzut.

Avertizări: Pericol. Produsul trebuie manipulat de personal calificat, cu standarde de siguranță adecvate, în conformitate cu instrucțiunile de utilizare prevăzute și cu fișa de siguranță. A nu se lăsa la îndemâna copiilor. A se păstra într-un loc uscat la temperatura camerei, departe de sursele de căldură. Data expirării se referă la produsul intact, depozitat corespunzător. Nu utilizați după data de expirare

(H) Indicații de pericol: (H22S): Lichid și vapori ușor inflamabili (H319). Provoacă iritații oculare severe (H412): Nociv pentru organismele acvatice cu efecte de lungă durată.

(P) Sfaturi de precauție: (P210): A se ține departe de sursele de căldură, de suprafețele fierbinți, de scânteii, de flăcări de libere sau de alte surse de aprindere. Nu fumați (P280): Purtați mănuși de protecție și protejați-vă ochii/fața. (P305+P338): ÎN CAZ DE CONTACT CU OCHII: clătiți bine timp de câteva minute. Scoateți lentilele de contact, dacă este cazul și dacă acest lucru se poate face cu ușurință. Continuați să clătiți. (P337+P313): Dacă iritația oculară persistă, consultați un medic. (P273): Nu aruncați în mediul înconjurător.

Conținut: 1000ml

Data revizuirii: 11/2019

Număr de urgență: +39.069145399

 **CANTEL**  
 **CANTEL MEDICAL (Italy) S.r.l.**  
Via Laurentina, 169  
00071 POMEZIA (RM) - Italia  
Tel.: +39.06.9145399  
Fax: +39.06.9146099  
[www.cantelmedical.it](http://www.cantelmedical.it)

  
0 0 5 1

Model	Distal Size	Working distance	Endoscope Model	Picture
XT-DL-092-40	9.0~9.2mm	4.0mm	EG-2790K, EG-2770; GIF-Q260, GIF-H190	
XT-DL-098-40	9.6~9.8mm	4.0mm	GIF-H260,GIF-H180,GIF-HQ190,PCF-PH190L/I	
XT-DL-099-40	9.7~10.1mm	4.0mm	EC-2990Li, EC-2990Fi, EC-2990Mi, EG-2990K	
XT-DL-105-40	10.3~10.7mm	4.0mm	PCF-Q260J, EC-3490TLi, EG-2990Zi, EG-2990K	
XT-DL-108-40	10.6~11.0mm	4.0mm	GIF-H260Z, EG-590ZW, EG-450CT5, EG-2990i	
XT-DL-115-40	11.3~11.7mm	4.0mm	PCF-H180AI/L, PCF-H190DI/L, EG-3470K, EC-3470MK/FK/LK, EG-3490K, EC-3490FK/Fi/LK, EG-	
XT-DL-118-40	11.6~12.0mm	4.0mm	GIF-2T240	
XT-DL-122-40	12.0~12.4mm	4.0mm	CF-Q260A, CF-Q260D	
XT-DL-128-40	12.6~13.0mm	4.0mm	EC-3890LZi/FZi/MZi, EC-380Kp, EC-250WM5, EC-590WM/ZW, EC-530WM/WI, EC-450WM5/WI5	
XT-DL-132-40	13.0~13.4mm	4.0mm	CF-Q180AL/I, CF-H190L/I, CF-HQ190L/I, EC-3890TFK/TLK, EC-3890Mi/Fi/Li, EG-3890TK	
XT-DL-148-40	14.6-15.0mm	4.0mm	CF-H260AZL/I	