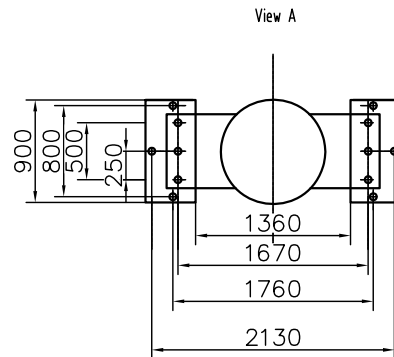
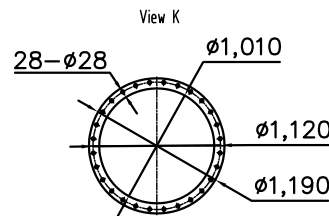
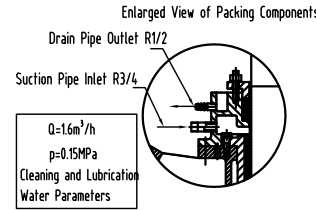
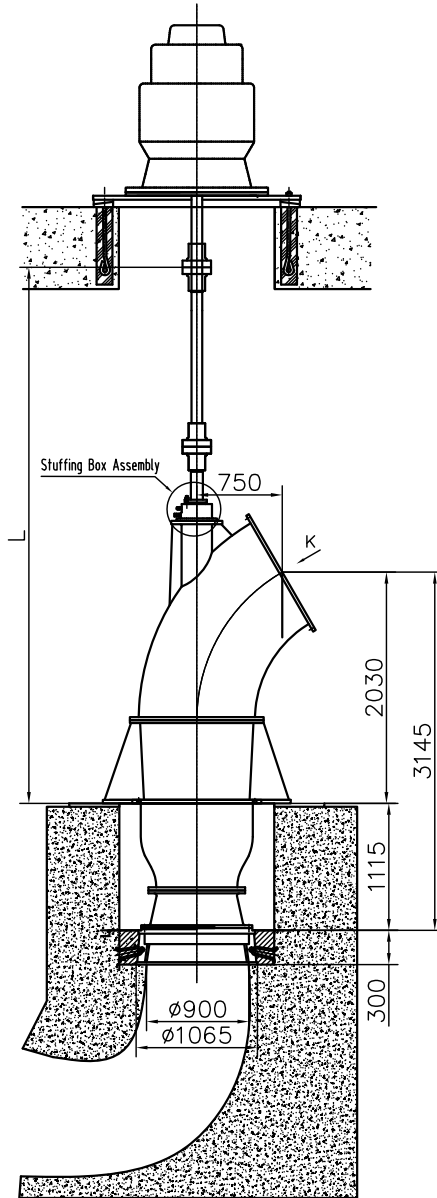


Technical Specifications

1. Pump Model: 1000HD-21 | Flow Rate (Q): 11,700 m³/h | Head (H): 21m
2. Matched Motor: 750 r/min | Power: 1,000 kW
3. Pump Head Weight: 3 T
4. Transmission Device Weight: 1.9 T
5. Maximum Hydraulic Thrust: 8.9 T
6. Pump Layer Dynamic/Static Load: 4.8 T / 4 T
7. Motor Layer Dynamic/Static Load: 25 T / 15 T
8. Maximum Lifting Height (Pump Head): 5 m
9. Maximum Lifting Weight: 10 T
10. Pre-Start Water Priming (Stuffing Box): 10 min | Water Shutdown Delay After Pump Stop: 15 min
11. If external water supply is unavailable on-site, technical consultation with the pump manufacturer is required.
12. The manufacturer only supplies the intermediate bearing assembly. The crossbeam or steel structure must be provided by the construction party.
13. Pump Accessories (post-discharge elbow):
 30° bend pipe
 Expansion joint
 Diffuser pipe
 Straight pipe
 Flap valve
 (Customizable based on user requirements.)



PROJECT NO.:		NAME	DATE	OUTLINE DRAWING
PROJECT NAME:		DRAWN		
PROPRIETARY AND CONFIDENTIAL THE INFORMATION CONTAINED IN THIS DRAWING IS THE SOLE PROPERTY OF <SHANGHAI KAIQUAN PUMP (GROUP) CO.,LTD.>. ANY REPRODUCTION IN PART OR AS A WHOLE WITHOUT THE WRITTEN PERMISSION OF <SHANGHAI KAIQUAN PUMP (GROUP) CO.,LTD.> IS PROHIBITED		CHECKED		
		ENG APPR		
		MFG APPR		
		Q.A.		
	PUMP TYPE:	1000HD-21		SIZE A
		SCALE:	WEIGHT:	REV.
				SHEET 1 OF 1