

1:1 ISOMETRIC VIEW FOR  
REFERENCE ONLY

SECTION A-A

# NOTES/SPECIFICATIONS:

- DESIGN WAVELENGTH: 587.6nm
- FOCAL LENGTH:  $f=199.3\text{mm} \pm 1\%$
- BACK FOCAL LENGTH(REF):  $bf=197.5\text{mm}$
- CLEAR APERTURE:  $>90\%$
- SURFACE QUALITY: 40-20 SCRATCH-DIG
- CENTRATION:  $<3\text{arcmin}$
- DIAMETER TOLERANCE:  $+0.0/-0.1\text{mm}$
- THICKNESS TOLERANCE:  $\pm 0.1\text{mm}$
- COATING: BBAR  $R_{\text{avg}} < 0.5\%$  FROM 350nm-700nm,  $0^\circ$  AOI, ON OUTER OPTICAL SURFACES

ALL DIMENSIONS ARE IN THE FORM  $\frac{\text{[in]}}{\text{mm}}$

THIS DRAWING IS FOR INFORMATION ONLY  
NOT INTENDED FOR MANUFACTURING

	NAME	DATE
DRAWN	WD	11/19/2009
ENG APPR.	BW	11/24/2009
MFG APPR.	DD	12/09/2009

## PROPRIETARY AND CONFIDENTIAL

THE INFORMATION CONTAINED IN THIS  
DRAWING IS THE SOLE PROPERTY OF  
THORLABS, INC. ANY REPRODUCTION  
IN PART OR AS A WHOLE WITHOUT  
THE WRITTEN PERMISSION OF  
THORLABS, INC. IS PROHIBITED.

THORLABS INC. PO BOX 366  
NEWTON NJ

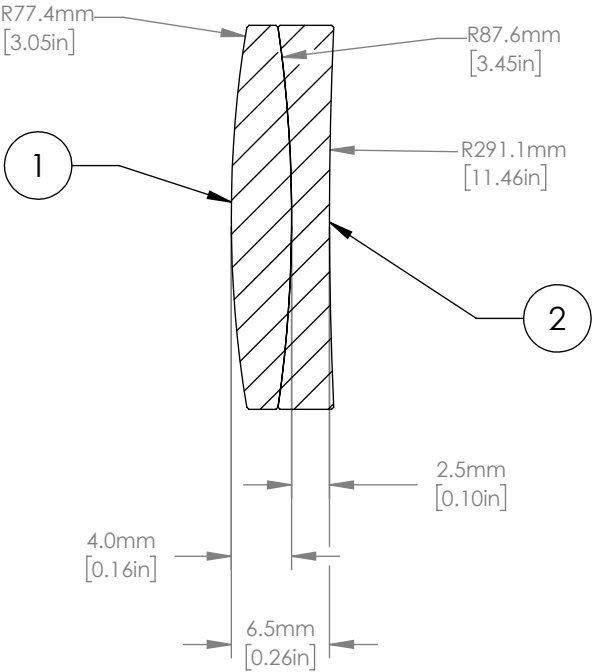
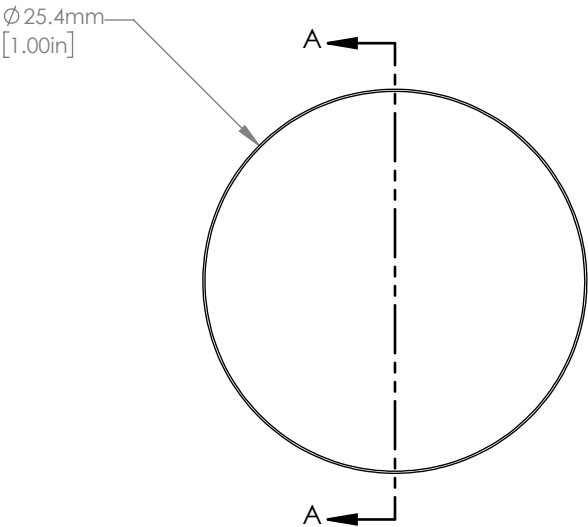
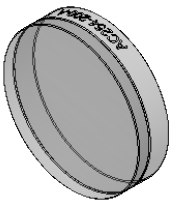
TITLE: D=25.4 F=200.0 N-BK7 A  
COAT PLANO CONVEX LENS

MATERIAL: N-BK7 SIZE A REV. B

SCALE: 2:1 SHEET 1 OF 1

DWG. NO. 4439-E01 PART NO. LA1708-A

	MATERIAL
①	N-SSK5
②	LAFN7

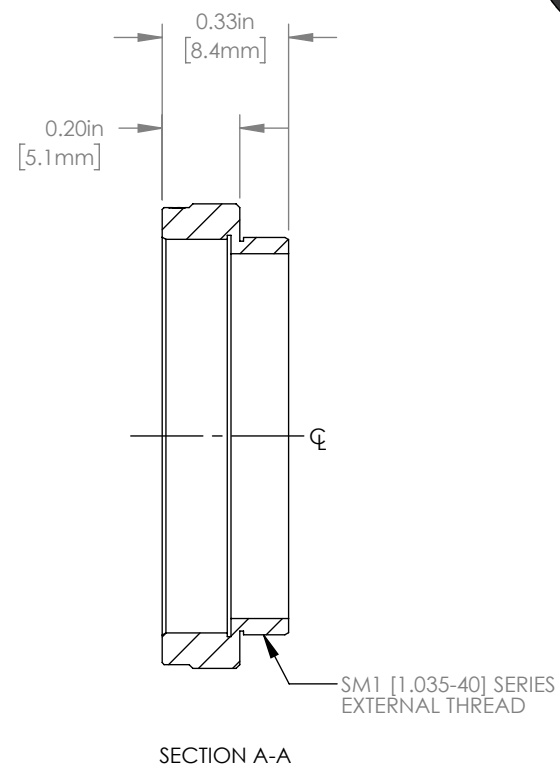
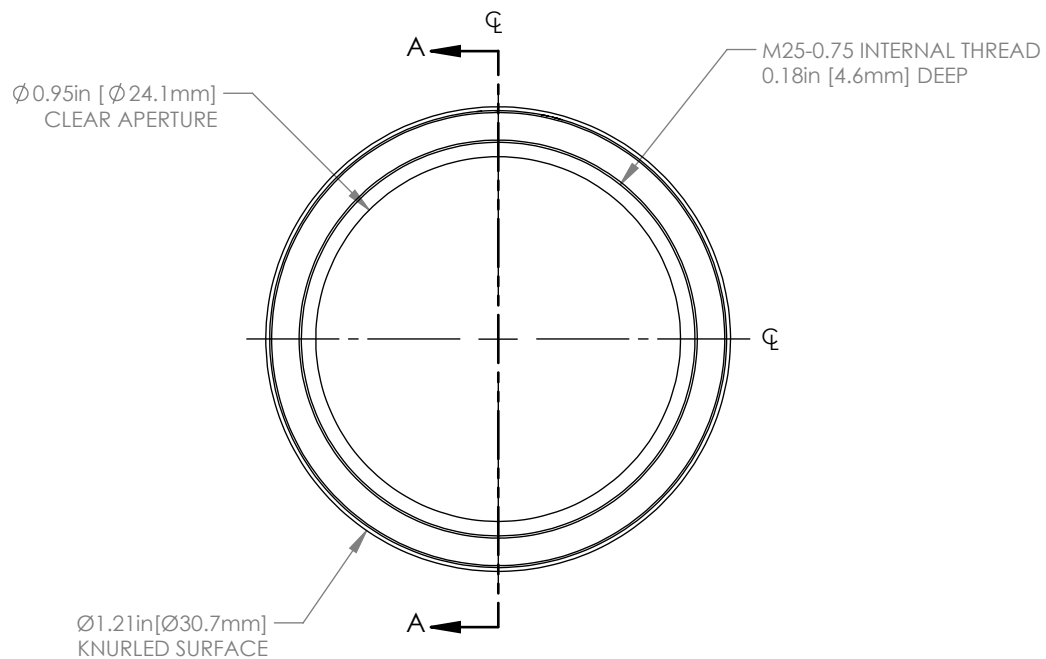


NOTES/SPECIFICATIONS:


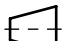
- DESIGN WAVELENGTH: 486.1nm, 587.6nm, & 656.3nm
- FOCAL LENGTH: 200.2mm ±1%
- BACK FOCAL LENGTH (REF): 194.0mm
- CLEAR APERTURE: > Ø 22.86mm
- SURFACE QUALITY: 40-20 SCRATCH-DIG
- CENTRATION: <3arcmin
- DIAMETER TOLERANCE: +0.0/-0.1mm
- THICKNESS TOLERANCE: ±0.20mm
- COATING: BBAR Rayg <0.5% FROM 400-700nm, 0° AOI, ON OUTER OPTICAL SURFACES

FOR INFORMATION ONLY  
NOT FOR MANUFACTURING PURPOSES

DRAWING PROJECTION			<div>THORLABS</div> <div>www.thorlabs.com</div> <div>Ø 25.4mm, f=200.0mm</div> <div>VISIBLE ACHROMAT, -A COAT</div>	
	NAME	DATE		
DRAWN	KMR	20/SEP/16	MATERIAL	
APPROVAL	DD	26/SEP/16		
COPYRIGHT © 2016 BY THORLABS			SEE TABLE	
VALUES IN PARENTHESIS ARE CALCULATED AND MAY CONTAIN ROUND OFF ERRORS			ITEM #	APPROX WEIGHT
			AC254-200-A	0.013 kg
				REV C



FOR INFORMATION ONLY  
NOT FOR MANUFACTURING PURPOSES

DRAWING PROJECTION							<b>THORLABS</b> www.thorlabs.com		
		NAME	DATE		INTERNAL M25 THREAD ADAPTER				
DRAWN		JN	02/SEP/15		MATERIAL ANODIZED ALUMINUM			REV C	
APPROVAL		PG	03/SEP/15						
COPYRIGHT © 2015 BY THORLABS								ITEM # SM1A12	APPROX WEIGHT 0.01kg
VALUES IN PARENTHESIS ARE CALCULATED AND MAY CONTAIN ROUND OFF ERRORS									