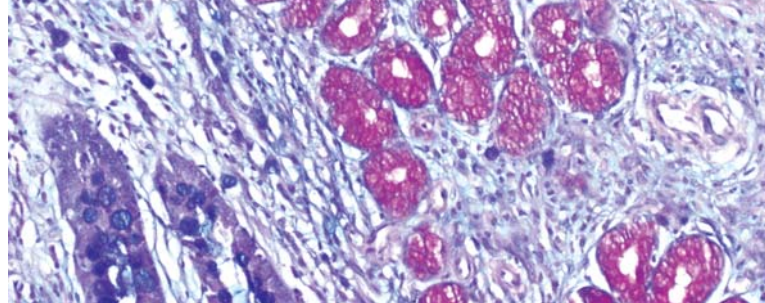


A.F.O.G. kit

Six-reagent Acid Euchsin Orange G kit for selective staining of glomerular protein deposits and collagen in kidney biopsies. Nuclear stain is obtained with Weigert ferric hematoxylin, cytoplasm with Orange G and highly selective collagen stain with Aniline blue.

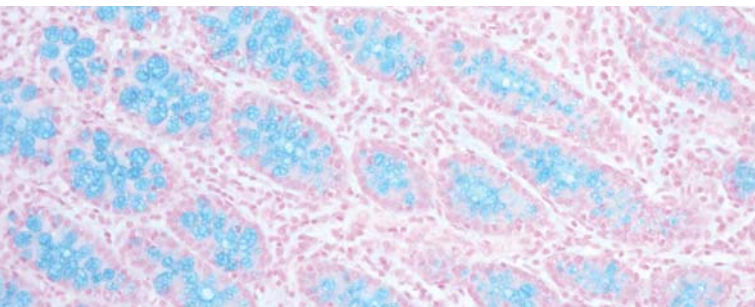
for 100 tests	AFOG-100T
6x100 mL	AFOG-K-100



Alcian Blue - P.A.S. kit

Seven-reagent Alcian Blue - Periodic Acid-Schiff kit for staining acid mucopolysaccharides according to Mowry. Enables differentiation between acid mucins (stained light blue) and neutral mucins, glycogens and glycoproteins (stained magenta).

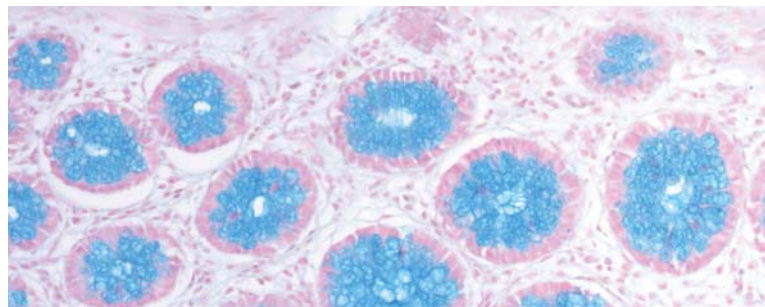
for 100 tests	AB-100T
7x100 mL	AB-K-100
7x500 mL	AB-K-500



Alcian Blue pH 1.0 kit

Three reagent kit for specific staining of heavily sulfated mucopolysaccharides blue. Slides are counterstained with Nuclear Fast Red (Kernechtrot) reagent to fully detect the presence of Alcian Blue positive staining.

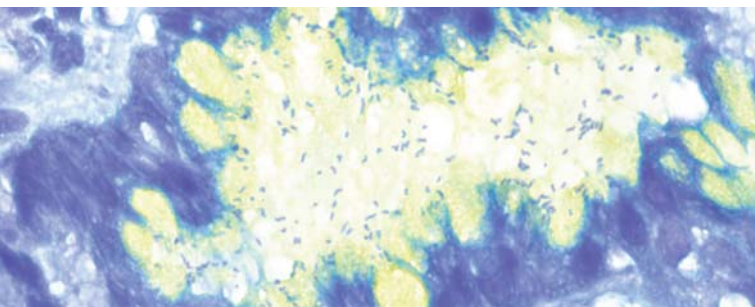
for 100 tests	AB10-100T
3x100 mL	AB10-K-100



Alcian Blue pH 2.5 kit

Three reagent kit for staining sulfated and carboxylated acid mucopolysaccharides and sulfated and carboxylated sialomucins blue. Slides are counterstained with Nuclear Fast Red (Kernechtrot) reagent to fully detect the presence of Alcian Blue positive staining.

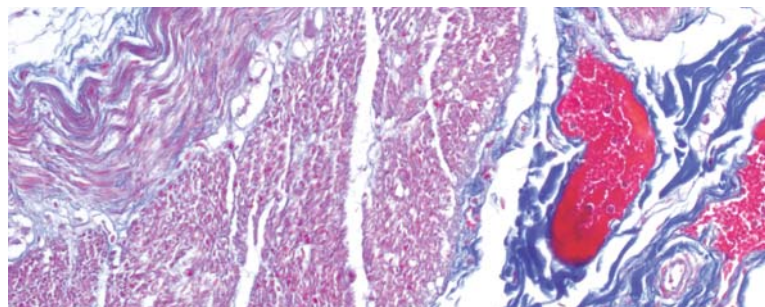
for 100 tests	AB25-100T
3x100 mL	AB25-K-100



Alcian Yellow Toluidine Blue kit

Six-reagent kit for staining *Helicobacter pylori* in gastric tissue sections. This method is one of the most popular non-silver method for staining of *H. pylori*, where bacteria are stained blue in contrast to yellow mucins.

for 100 tests	AYTB-100T
---------------	-----------



Azan Trichrome kit

Five-reagent kit for connective tissue staining according to Mallory. Used for visualization of muscle fibers, collagen, glial cells, kidney glomerular stroma, erythrocytes, reticulum and nuclear chromatin in histologic sections.

for 100 tests	AZT-100T
5x250 mL	AZT-K-250

