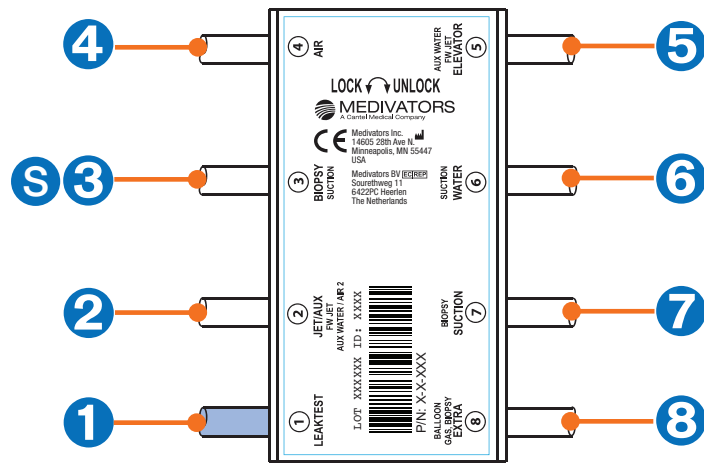


2-8-332 HOOKUP CONNECTION GUIDE

READ ALL INSTRUCTIONS PRIOR TO CONNECTION

Using MEDIVATORS ADVANTAGE® and MEDIVATORS® ISA® Automated Endoscope Reprocessors

HOOKUP DIAGRAM



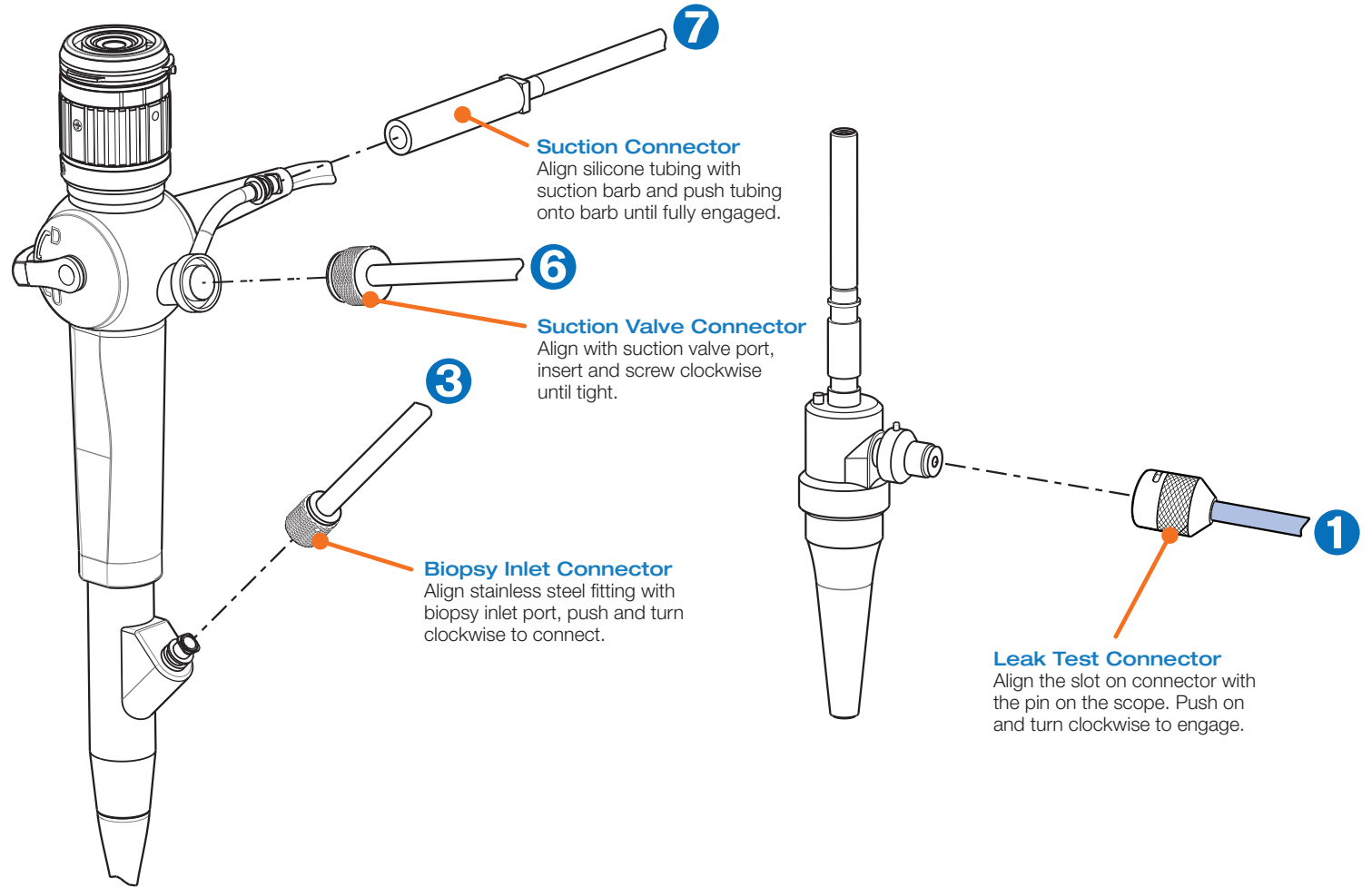
Each Hookup is comprised of multiple ports and connector assemblies. Each port is labeled with a Port ID number (circled). This same number also identifies the corresponding Connector Assembly. Each Connector Assembly is fitted with a specific endoscope connector.

CONNECTOR ASSEMBLY IDENTIFICATION CHART

Port ID	Port Name	Connector Assembly Description	Order Number
1	LEAK TEST	Leak Test Connector Assembly	H28332-1
2	JET/AUX	N/A	N/A
3	BIOPSY	Biopsy Inlet Connector Assembly	H28332-3
4	AIR	N/A	N/A
5	ELEVATOR	N/A	N/A
6	WATER	Suction Valve Connector Assembly	H28332-6
7	SUCTION	Suction Connector Assembly	H28332-7
8	EXTRA	N/A	N/A
S	N/A	N/A	N/A

If a Connector Assembly needs replacement, locate the port number/name and use the corresponding order number found in the chart above. Connector Assemblies are specific to individual hookups.

Locate the endoscope port and follow the instructions for attaching the corresponding Endoscope Connector. All connectors must be attached.



DESIGNATED HOOKUP FOR THE FOLLOWING PENTAX® ENDOSCOPES*:

EB-1530T2	EB-1830T3	FB-10V	FB-15X	FB-18X	FB-8V	VB-1530T	VB-1830T	VB-1910
EB-1530T3	ECN-1530	FB-10X	FB-18RX	FB-19TV	FCN-15X	VB-1530T2	VB-1830T2	VB-2000
EB-1830T2	ECY-1530	FB-15V	FB-18V	FB-19TX	VB-1530	VB-1830	VB-1830T3	VNL-1530T

* This list of corresponding endoscope models is subject to change without notice. For a full list, please go to: www.medivators.com/hookuplookup

If you have any questions regarding this hookup, in the U.S., please contact Medivators Technical Support at 1-800-444-4729. Outside the U.S., please contact your Medivators representative.

Representative endoscope for illustrative purposes only. For exact port locations, refer to endoscope manufacturer's instruction guide.

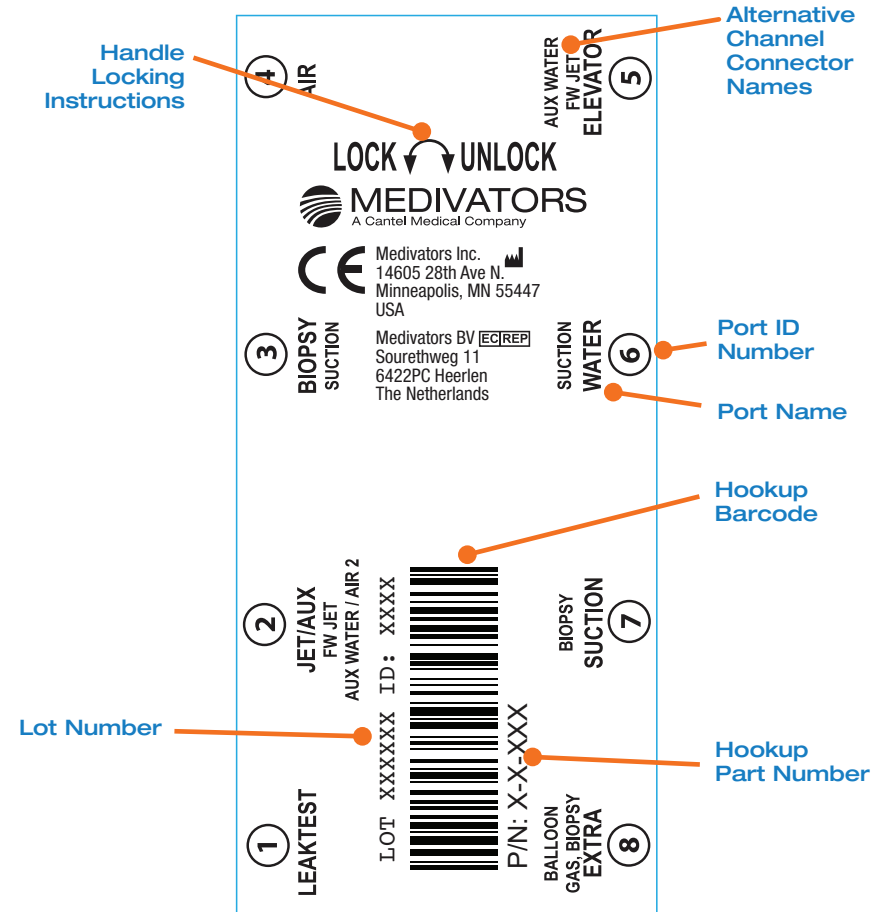


Ensure proper alignment of all connectors with the endoscope mating parts prior to attachment.



HOOKUP CONNECTOR BLOCK LABEL

The Hookup Connector Block Label contains useful information for quick reference.



Handle Locking Instructions - insert block onto basin channel manifold and move handle to the left to lock. Move to the right to unlock.

Lot Number - identifies date of manufacture.

Hookup Part Number - identifies hookup.

Hookup Barcode - barcode of part number.

Port Name - identifier of port location in ADVANTAGE system. Error logs identify issues using these names. Also identifier of Connector Assembly replacements for older model hookups.

Port ID Number - identifier for Connector Assembly replacements. Not found on older model hookups.

Alternative Channel Connector Names - connector names vary depending on specific endoscope channel configuration.

WARNINGS & CAUTIONS



This hookup is intended for connection only with the specific endoscope models identified in the appropriate MEDIVATORS online hookup guide. Use of this hookup with endoscopes other than those specified by the hookup application guide may result in inadequate HLD.

Users operating MEDIVATORS AERs and hookups must be trained and competent in the understanding of endoscope channel systems.

Prior to reprocessing, users must verify that the hookup used contains connections for all appropriate channels that require a separate reprocessing connection according to the hookup instructions.

All connectors and adapters must remain firmly attached and unrestricted for the entire disinfection cycle to ensure adequate HLD. Users must inspect the endoscope and hookup combination to verify proper connection and flow.

Modifications or repairs to hookups which do not correspond to the manufacturer's specifications may result in inadequate HLD and/or damage to endoscopes.

Failure to properly clean and prepare endoscope for immersion prior to hookup connection may result in inadequate HLD and/or damage to the endoscope.

Endoscopes must be inspected for damage and verified to be in proper working order prior to hookup connection. Connection of hookups to damaged endoscopes or endoscopes with obstructed/restricted channels could result in inadequate HLD.

Manual leak testing must be carried out in accordance with manufacturer's recommendations prior to reprocessing.

Install all necessary waterproof caps, plugs and cleaning adapters prior to immersion.

Do NOT autoclave MEDIVATORS hookups.

Medivators makes no claim on high-level disinfection efficacy when these reprocessing instructions are not followed, or when this hookup kit is applied to endoscopes other than those specified in the online interactive hookup guide.

Avoid biological contamination. Always wear personal protective equipment when handling endoscopes.

MEDIVATORS® and MEDIVATORS ADVANTAGE® are registered trademarks of Medivators Inc. ISA® is a registered trademark of Cantel Medical (Italy) S.r.l. All company or product names referenced are trademarks of their respective owners.



Medivators Inc.
14605 28th Avenue North
Minneapolis, MN
55447-4822 USA
Tel: +1.763.553.3300
Fax: +1.763.553.3387

Medivators BV
Sourethweg 11
6422 PC Heerlen
The Netherlands
Tel: +31.45.5.471.471
Fax: +31.45.5.429.595

Cantel (France) SAS
3 rue du pré fermé
31200 Toulouse
France
Tel: +33 (0) 5.61.245.275
Fax: +33 (0) 5.61.247.001

Cantel Medical (Italy) S.r.l.
Via Laurentina, 169
00071 Pomezia (RM) Italia
Tel.: +39 06 9145399
Fax: +39 06 9146099
www.cantelmedical.it

Cantel (UK) Limited
Campfield Road
Shoeburyness, Essex
SS3 9BX,
United Kingdom
Tel: +44 (0) 1702.291878
Fax: +44 (0) 1702.290013

Cantel Medical Asia/Pacific Pte. Ltd.
1A International Business Park
#05-01 Singapore 609933
Tel: +65.6227.9698
Fax: +65.6225.6848

Cantel Medical Devices (China) Co. Ltd.
Unit 804-805, Innov Tower Block A,
Hongmei Road, Xuhui 200233 Shanghai
Tel: +86 21 60161380
Fax: +86 21 61210913