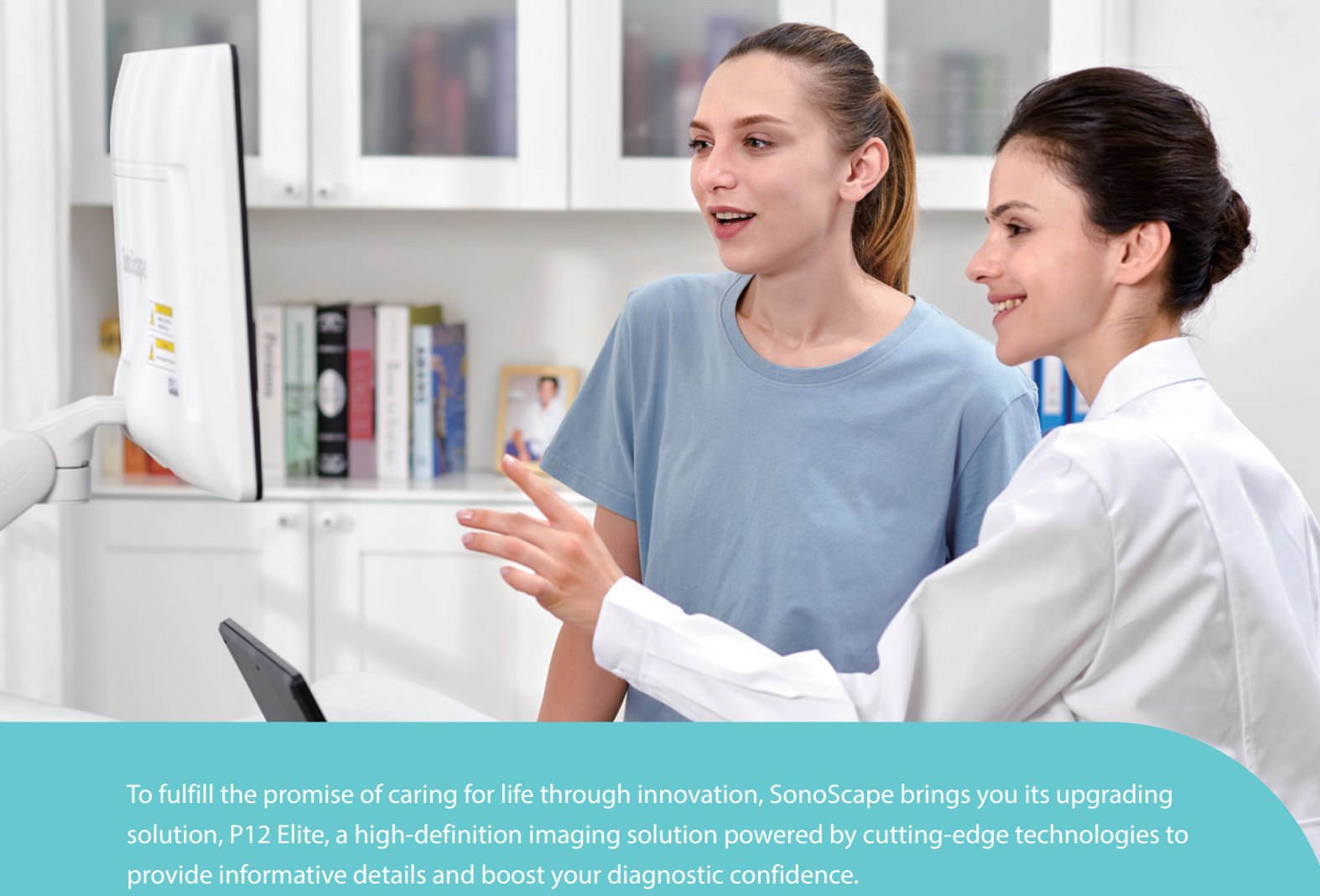


# P12 Elite

Enhance Capability for  
Optimized Care







To fulfill the promise of caring for life through innovation, SonoScape brings you its upgrading solution, P12 Elite, a high-definition imaging solution powered by cutting-edge technologies to provide informative details and boost your diagnostic confidence.

With comprehensive features and optimized probe configurations, P12 Elite provides an exceptional capability to manage all-aspects of the daily clinical practices that help build trust between doctors and patients.

# Optimized Transducers Family Wide Range of Application Coverage

Single Crystal Convex Probe C1-5



Composite Crystal Linear Probe 12L-B



Phased Array Probe 2P1



Intracavity Probe 6V1



Volume Probe VC6-2

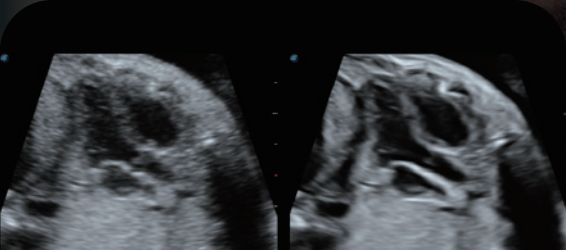


## Extraordinary Image Technologies

With the outstanding clear view provided by SonoScape's advanced imaging technologies and optimized transducers, you can make clinical decisions with greater confidence.

### μ-Scan<sup>+</sup>

The new generation μ-Scan<sup>+</sup> imaging technology greatly improves the visibility of organs and lesions. The high-definition contrast resolution will suppress speckle artifacts while maintaining real tissue architecture.

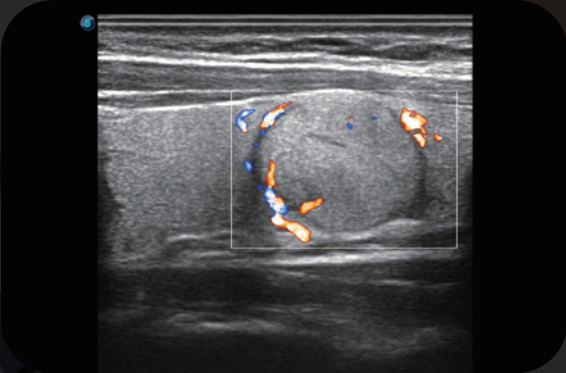


μ-Scan off

μ-Scan on

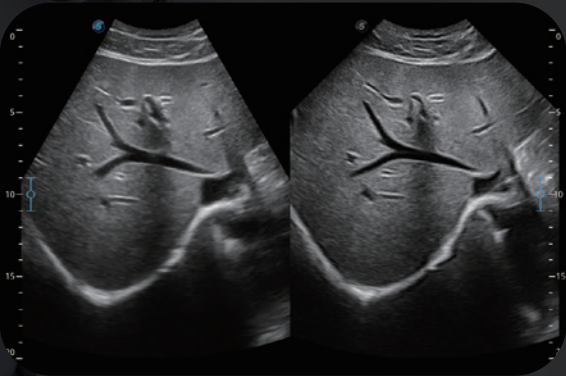
### SR Flow

As a new innovative technology, SR Flow improves the capability of detecting low velocity flow signals. It also improves on spatial resolution and overcomes overflow to present users with real hemodynamic information.



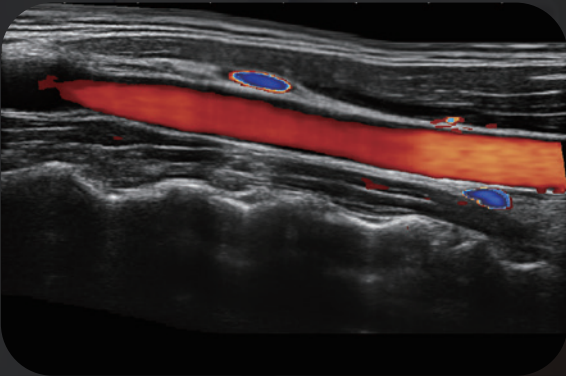
### WideScan

With WideScan, the ultrasound image can be enlarged when performing a real time scan by using linear or convex probes, for a more complete view of large lesions or anatomic structures.



### Real-time Color Panoramic

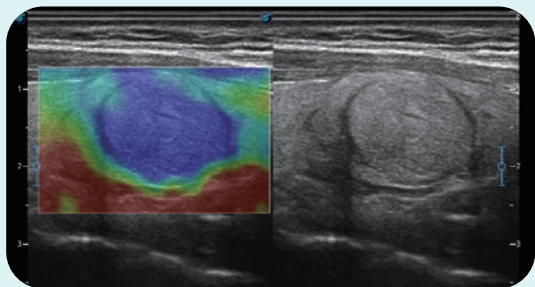
With the combination of color flow and real-time panoramic, visualizing the blood flow of an entire vein or artery is now an easy task. Accomplished in real-time for the convenience of the sonographers, any mistake can also be easily back tracked and corrected without interrupting the scan.







# Design with Clinical Application in Mind

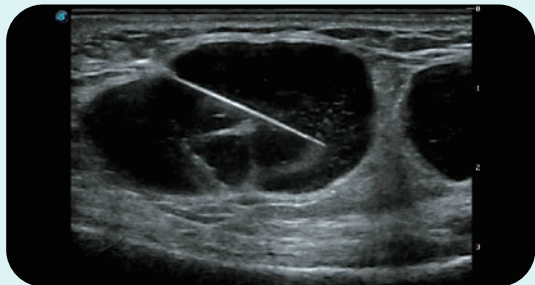


## C-xlasto Imaging

C-xlaso imaging enables comprehensive quantitative elastic analysis. Meanwhile, it is supported by multiple probes to ensure good reproducibility and highly consistent quantitative elastic results.

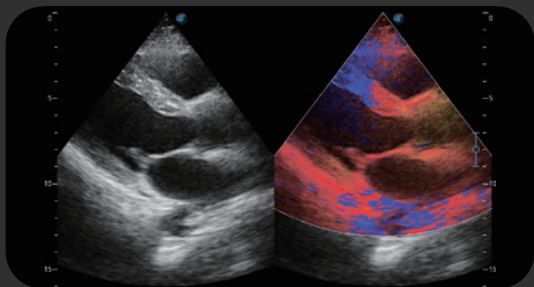
## Contrast-Enhanced Ultrasound

The comprehensive contrast-enhance ultrasound imaging and quantification package allow doctors to assess perfusion dynamics in a wide range of clinical setting. The unique Dynamic Acoustic Control technology effectively controls the acoustic pressure of the contrast agent, guaranteeing longer contrast agent duration and better lesion perfusion of delayed phase observation.



## Vis-Needle

Vis-Needle is realized by ultrasound beam steering and deflection. It improves visualization of the needle location in the tissue to minimize harm to the surrounding tissue, increasing the initial success rate and lowering the risk for needle puncture.



## Tissue Doppler Imaging

P12 Elite is endowed with Tissue Doppler Imaging which provides velocities and other clinical information on myocardial functions, facilitating clinical doctors with the ability to analyze and compare the motions of different parts of the patient's heart.

## S-Fetus

Based on a big data dependable deep learning algorithm, S-Fetus is a brilliant one-stop solution for automatic standard plane acquisition and measurement. With just one click, common fetal biometry results are obtained with high intelligence, accuracy and efficiency, aiming for an unprecedented ease during operation.



## S-Live

S-Live allows for detailed visualization of subtle anatomical features, thereby enabling intuitive diagnosis with real-time 3D images and enriching patient communication.



# User-friendly Design

23.8-inch LED monitor(Optional), 220°degree rotation

Height-adjustable and rotatable control panel

13.3-inch tilting touch screen

Detachable large capacity battery

Multi-stage temperature control gel warmer

Sliding keyboard



## User Interaction with Care

### Sono-Help

An inspiring tutorial displaying probe placement, anatomy illustration and standard ultrasound image examples. As a useful reference less experienced clinicians could rely on, Sono-Help covers a variety of applications including liver, kidney, cardiac, breast, thyroid, obstetrics, vascular, etc.

### Sono-Drop

Sono-Drop allows wireless connection between P12 Elite and smartphones where ultrasound images can be shared to patients and their families.

### Sono-Synch

Real-time interface and camera sharing, enabled by Sono-Synch, makes it possible to connect two ultrasounds in a remote distance and perform remote medical consultation and tutorial.