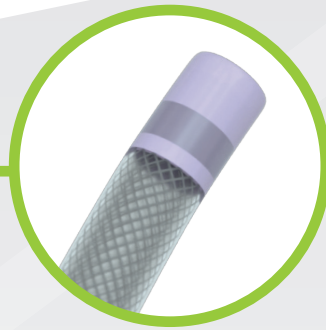


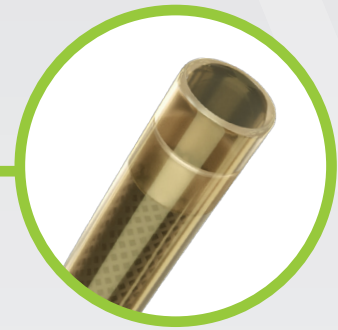
ISCHEMIC STROKE SYSTEM



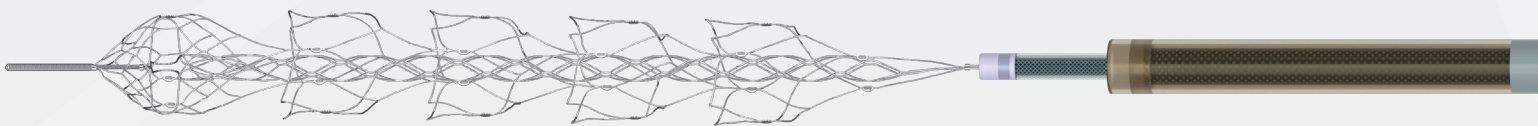
EMBOTRAP[®] III
revascularization device



EMBOVAC[™]
aspiration catheter



CEREBASE[™] DA
guide sheath



EMBOTRAP[™] III Revascularization Device

Product Code	Recommended Vessel Diameter	Working Length	Push Wire Length	Overall Length	Microcatheter compatibility	Radiopaque Tip Length	Proximal coil length	Number of Radiopaque Markers		
								Proximal	Body	Distal
ET307522	1.5-5.0mm	22mm	188cm	194cm	0.021"	4mm	20mm	2	8	3
ET307537	1.5-5.0mm	37mm	188cm	195cm	0.021"	4mm	20mm	2	16	3
ET307645	1.5-6.5mm	45mm	188cm	196cm	0.021"	4mm	20mm	2	16	3

EMBOVAC[™] aspiration catheter

Product Code	Distal ID	Distal OD	Proximal OD ¹	Guide Compatibility	Usable Length
IC71125CA	0.071"	0.081"	0.0825"	6Fr	125cm
IC71132CA	0.071"	0.081"	0.0825"	6Fr	132cm

CEREBASE[™] DA Guide Sheath

Catalog No.	ID	OD (compatible short sheath)	Usable Length
GS9080SD	0.090"	8F	80cm
GS9090SD	0.090"	8F	90cm
GS9095SD	0.090"	8F	95cm



CERENOVUS
PART OF THE **Johnson & Johnson** FAMILY OF COMPANIES

Johnson & Johnson Medical Ltd.
Pinewood Campus, Nine Mile Ride
Wokingham, RG40 3EW
United Kingdom

Registered Office:
Baird House,
4 Lower Gilmore Bank,
Edinburgh EH3 9QP

Legal Manufacturer:
Medas International SARL
Chemin-Blanc 38
CH-2400 Le Locle
Switzerland

Neuravi Ltd.
Block 3, Ballybrit Business Park
Galway, H91 K5YD
Ireland

LIMITED WARRANTY AND DISCLAIMER: CERENOVUS products are sold with a limited warranty to the original purchaser against defects in workmanship and materials. Any other express or implied warranties, including warranties of merchantability or fitness are hereby disclaimed. Please also refer to the package insert(s) or other labelling associated with the devices identified in this document for additional information.

This publication is not intended for distribution outside of EMEA. Not all products may currently be available in all markets.

NOTE: For recognised manufacturer, refer to the product label
©CERENOVUS 2020, All rights reserved 142372-200604 EMEA