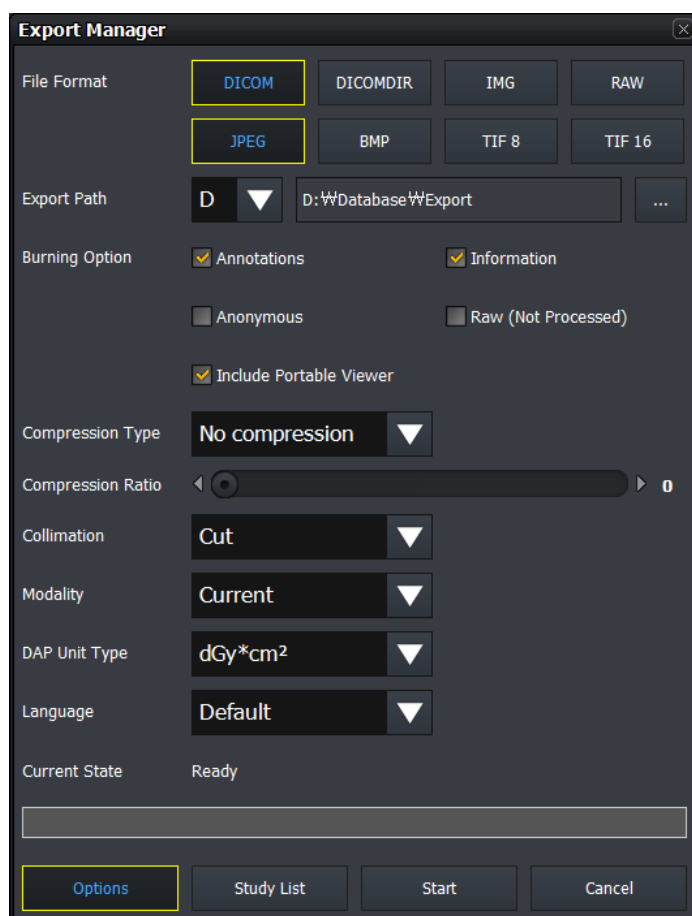


8.12 Exporting Images



- Use this function to export study items selected from the study list to local or to the external storage medium.
- It supports various storage medium like HDD, USB, CD, DVD, etc.
- It also supports various image format conversions.
- You can execute other actions while importing images. (e.g. shooting or sending images)

How to use



- 1 Select studies to be exported from the study list.
 - You can choose several studies by using **Ctrl** or **Shift** key.
- 2 Click on the **Export** button.
 - The **Export Manager** window displays.
- 3 Set various options such as image format, storage path, etc.
 - Click on the **Options** button to set additional options.
 - Click on the **StudyList** button to check the list of studies to be exported.
- 4 Click on the **Start** button to export images.
 - You can suspend exporting images while converting the files.
- 5 You cannot change the configured options if the exporting is stopped or failed.

Close

- 1 Click on the **Close** button or to finish exporting the image.
 - If you click while exporting images, the progress window is hidden but the images continue to be exported.
- 2 The **Export Manager** window is closed after exporting images successfully. Check the exported files from the storage media.



- While the images are being exported, the **Export Manager** is not closed even you close **VXvue**.
- A pop-up window will appear to ask if you continue to export reject / preview / FTM images if they are included in the study list to be exported.
 - It is not available to export the reject / preview / FTM images.