

Future Knee 1 System

Product Catalog



Biotech GmbH
Hauptstraße 113
56598 Rheinbrohl Germany
Tel : +49 2635 92221-0
Email : office-de@biotech-medical.net
www.biotech-medical.com



BIOTECH

REF
VB-004-PROSP-PC-06-EN-00

Revision
2

Publication date :
01.04.2022.

© 1011

"Movement is Life"



THE TOTAL KNEE SYSTEM

In the Biotech FUTURE KNEE 1 System, there is a wide range of choice of implants meeting the needs of surgeons, which provide a high intraoperative flexibility and minimize the restrictions, defined in the system condition of the case study.

According to these, the Biotech FUTURE KNEE 1 System have been designed to provide solutions for Primary, Posterior-Stabilized and Revision indications. The cemented and the uncemented fixation can be flexibly chosen in given intraoperative situations, and can be made with the same set of instruments.

The anatomical design of each component allows physiological movements in great extent, overcoming the arising destructive conditions. With total intraoperative flexibility and single, but accurate set of instruments, a natural joint formation can be developed and a long-life expectancy of the artificial joint can be influenced positively.

Important parameters:

- Anatomical CoCr femoral components
- optional: also available in uncemented version
- CoCr Tibial Tray to minimize polyethylene wear, one piece and modular
- optional: also available in uncemented version and "All Poly" tibia
- Primary Tibial Insert lipped
- P/S Femoral components
- P/S Tibial Insert
- Meniscal bearing components
- Insert screw fixation to reduce micro motion between the insert and the tibial tray
- Revision CoCr femoral components
- Different stem lengths to increase the joint stability in revision components
- Femoral and Tibial Augmentation Block
- Flexible angular fit (5°, 7°, 9°) of the femoral stems for revision components
- Maximal surface contact of tibial and femoral components to minimize polyethylene wear

Order information:**FUTURE KNEE 1 Femoral Components - CoCr
DIN EN ISO 5832-4**

Right	
XXS *	058-1311-0058
XS	058-1311-1062
S	058-1311-2066
M	058-1311-3070
L	058-1311-4074
XL	058-1311-5078
XXL *	058-1311-6082
Left	
XXS *	058-1312-0058
XS	058-1312-1062
S	058-1312-2066
M	058-1312-3070
L	058-1312-4074
XL	058-1312-5078
XXL *	058-1312-6082

**FUTURE KNEE 1 Tibial Inserts
UHMWPE DIN EN ISO 5834-2**

XXS 8mm *	058-4500-0108
XXS 10mm *	058-4500-0110
XXS 12mm *	058-4500-0112
XXS 15mm *	058-4500-0115
XXS 18mm *	058-4500-0118
XXS 20mm *	058-4500-0120
XS 8mm	058-4500-1108
XS 10mm	058-4500-1110
XS 12mm	058-4500-1112
XS 15mm	058-4500-1115
XS 18mm	058-4500-1118
XS 20mm	058-4500-1120
S 8mm	058-4500-2108
S 10mm	058-4500-2110
S 12mm	058-4500-2112
S 15mm	058-4500-2115
S 18mm	058-4500-2118
S 20mm	058-4500-2120
M 8mm	058-4500-3108
M 10mm	058-4500-3110
M 12mm	058-4500-3112
M 15mm	058-4500-3115
M 18mm	058-4500-3118
M 20mm	058-4500-3120
L 8mm	058-4500-4108
L 10mm	058-4500-4110
L 12mm	058-4500-4112
L 15mm	058-4500-4115
L 18mm	058-4500-4118
L 20mm	058-4500-4120
XL 8mm	058-4500-5108
XL 10mm	058-4500-5110
XL 12mm	058-4500-5112
XL 15mm	058-4500-5115
XL 18mm	058-4500-5118
XL 20mm	058-4500-5120
XXL 8mm *	058-4500-6108
XXL 10mm *	058-4500-6110
XXL 12mm *	058-4500-6112
XXL 15mm *	058-4500-6115
XXL 18mm *	058-4500-6118
XXL 20mm *	058-4500-6120

**FUTURE KNEE 1 One Piece
Tibial Tray Components
CoCr DIN EN ISO 5832-4**

XXS *	058-3410-0000
XS	058-3410-1000
S	058-3410-2000
M	058-3410-3000
L	058-3410-4000
XL	058-3410-5000
XXL *	058-3410-6000

* - optional

**FUTURE KNEE 1 P/S Femoral
Components - CoCr
DIN EN ISO 5832-4**

Right	
XXS *	059-1311-0258
XS	059-1311-1262
S	059-1311-2266
M	059-1311-3272
L	059-1311-4274
XL	059-1311-5278
XXL *	059-1311-6282

Left	
XXS *	059-1312-0258
XS	059-1312-1262
S	059-1312-2266
M	059-1312-3272
L	059-1312-4274
XL	059-1312-5278
XXL *	059-1312-6282

**FUTURE KNEE 1 P/S Tibial Inserts
UHMWPE DIN EN ISO 5834-2**

XXS 8mm *	059-4500-0208
XXS 10mm *	059-4500-0210
XXS 12mm *	059-4500-0212
XXS 15mm *	059-4500-0215
XXS 18mm *	059-4500-0218
XXS 20mm *	059-4500-0220
XS 8mm	059-4500-1208
XS 10mm	059-4500-1210
XS 12mm	059-4500-1212
XS 15mm	059-4500-1215
XS 18mm	059-4500-1218
XS 20mm	059-4500-1220
S 8mm	059-4500-2208
S 10mm	059-4500-2210
S 12mm	059-4500-2212
S 15mm	059-4500-2215
S 18mm	059-4500-2218
S 20mm	059-4500-2220
M 8mm	059-4500-3208
M 10mm	059-4500-3210
M 12mm	059-4500-3212
M 15mm	059-4500-3215
M 18mm	059-4500-3218
M 20mm	059-4500-3220
L 8mm	059-4500-4208
L 10mm	059-4500-4210
L 12mm	059-4500-4212
L 15mm	059-4500-4215
L 18mm	059-4500-4218
L 20mm	059-4500-4220
XL 8mm	059-4500-5208
XL 10mm	059-4500-5210
XL 12mm	059-4500-5212
XL 15mm	059-4500-5215
XL 18mm	059-4500-5218
XL 20mm	059-4500-5220
XXL 8mm *	059-4500-6208
XXL 10mm *	059-4500-6210
XXL 12mm *	059-4500-6212
XXL 15mm *	059-4500-6215
XXL 18mm *	059-4500-6218
XXL 20mm *	059-4500-6220

**Patella Components
UHMWPE DIN EN ISO 5834-2**

S	051-7110-0332
M	051-7110-0334
L	051-7110-0337

**FUTURE KNEE 1 CR Meniscal Bearing
Tibial Insert - Cruciate Retaining
UHMWPE DIN EN ISO 5834-2**

XX-S 8 mm *	063-4501-0208
XX-S 10 mm *	063-4501-0210
XX-S 12 mm *	063-4501-0212
XX-S 15 mm *	063-4501-0215
XX-S 18 mm *	063-4501-0218
XX-S 20 mm *	063-4501-0220
X-S 8 mm	063-4501-1208
X-S 10 mm	063-4501-1210
X-S 12 mm	063-4501-1212
X-S 15 mm	063-4501-1215
X-S 18 mm	063-4501-1218
X-S 20 mm	063-4501-1220
S 8 mm	063-4501-2208
S 10 mm	063-4501-2210
S 12 mm	063-4501-2212
S 15 mm	063-4501-2215
S 18 mm	063-4501-2218
S 20 mm	063-4501-2220
M 8 mm	063-4501-3208
M 10 mm	063-4501-3210
M 12 mm	063-4501-3212
M 15 mm	063-4501-3215
M 18 mm	063-4501-3218
M 20 mm	063-4501-3220
L 8 mm	063-4501-4208
L 10 mm	063-4501-4210
L 12 mm	063-4501-4212
L 15 mm	063-4501-4215
L 18 mm	063-4501-4218
L 20 mm	063-4501-4220
X-L 8 mm	063-4501-5208
X-L 10 mm	063-4501-5210
X-L 12 mm	063-4501-5212
X-L 15 mm	063-4501-5215
X-L 18 mm	063-4501-5218
X-L 20 mm	063-4501-5220
XX-L 8 mm *	063-4501-6208
XX-L 10 mm *	063-4501-6210
XX-L 12 mm *	063-4501-6212
XX-L 15 mm *	063-4501-6215
XX-L 18 mm *	063-4501-6218
XX-L 20 mm *	063-4501-6220

**FUTURE KNEE 1 P/S Meniscal Bearing
Tibial Inserts
UHMWPE DIN EN ISO 5834-2**

XXS 8mm *	063-4500-0208
XXS 10mm *	063-4500-0210
XXS 12mm *	063-4500-0212
XXS 15mm *	063-4500-0215
XXS 18mm *	063-4500-0218
XXS 20mm *	063-4500-0220
XS 8mm	063-4500-1208
XS 10mm	063-4500-1210
XS 12mm	063-4500-1212
XS 15mm	063-4500-1215
XS 18mm	063-4500-1218
XS 20mm	063-4500-1220
S 8mm	063-4500-2208
S 10mm	063-4500-2210
S 12mm	063-4500-2212
S 15mm	063-4500-2215
S 18mm	063-4500-2218
S 20mm	063-4500-2220
M 8mm	063-4500-3208
M 10mm	063-4500-3210
M 12mm	063-4500-3212
M 15mm	063-4500-3215
M 18mm	063-4500-3218
M 20mm	063-4500-3220
L 8mm	063-4500-4208
L 10mm	063-4500-4210
L 12mm	063-4500-4212
L 15mm	063-4500-4215
L 18mm	063-4500-4218
L 20mm	063-4500-4220
XL 8mm	063-4500-5208
XL 10mm	063-4500-5210
XL 12mm	063-4500-5212
XL 15mm	063-4500-5215
XL 18mm	063-4500-5218
XL 20mm	063-4500-5220
XXL 8mm *	063-4500-6208
XXL 10mm *	063-4500-6210
XXL 12mm *	063-4500-6212
XXL 15mm *	063-4500-6215
XXL 18mm *	063-4500-6218
XXL 20mm *	063-4500-6220

**FUTURE KNEE 1
Meniscal Bearing
Tibial Tray Components
CoCr DIN EN ISO 5832-4**

XXS *	063-3410-0000
XS	063-3410-1000
S	063-3410-2000
M	063-3410-3000
L	063-3410-4000
XL	063-3410-5000
XXL *	063-3410-6000

"Movement is Life"

TRK Revision Cemented Femoral Components
CoCr DIN EN ISO 5832-4

Right

XXS *	054-1311-0558
XS	054-1311-1562
S	054-1311-2566
M	054-1311-3570
L	054-1311-4574
XL	054-1311-5578
XXL *	054-1311-6582

Left

XXS *	054-1312-0558
XS	054-1312-1562
S	054-1312-2566
M	054-1312-3570
L	054-1312-4574
XL	054-1312-5578
XXL *	054-1312-6582

TRK Revision Cemented Universal Stems
TiAl6V4 DIN EN ISO 5832-3

10x50 *	054-5410-0510
10x80 *	054-5410-0810
10x110 *	054-5410-1110
10x140 *	054-5410-1410
10x170 *	054-5410-1710
12x50 *	054-5410-0512
12x80	054-5410-0812
12x110	054-5410-1112
12x140	054-5410-1412
12x170 *	054-5410-1712
14x50 *	054-5410-0514
14x80	054-5410-0814
14x110	054-5410-1114
14x140	054-5410-1414
14x170 *	054-5410-1714
16x50 *	054-5410-0516
16x80	054-5410-0816
16x110	054-5410-1116
16x140	054-5410-1416
16x170 *	054-5410-1716
18x50 *	054-5410-0518
18x80 *	054-5410-0818
18x110 *	054-5410-1118
18x140 *	054-5410-1418
18x170 *	054-5410-1718

TRK Revision Stem Adapters
TiAl6V4 DIN EN ISO 5832-3

Adapter for Revision Universal Stem 5°, 9°
Adapter for Revision Universal Stem 7°

054-9415-0001
054-9415-0002

TRK Revision Stem Offsets
TiAl6V4 DIN EN ISO 5832-3

Long offset for Tibial Stem Offset
Short offset for Femoral and Tibial Stem
Long offset for Tibial Stem Offset
Short offset for Femoral and Tibial Stem

3mm 054-1415-0500
3mm 054-2415-0500
6mm 054-3415-0500
6mm 054-4415-0500

TRK Revision Tibial Inserts
UHMWPE DIN EN ISO 5834-2

XXS 8mm *	054-4500-0508
XXS 10mm *	054-4500-0510
XXS 12mm *	054-4500-0512
XXS 15mm *	054-4500-0515
XXS 18mm *	054-4500-0518
XXS 20mm *	054-4500-0520
XS 8mm	054-4500-1508
XS 10mm	054-4500-1510
XS 12mm	054-4500-1512
XS 15mm	054-4500-1515
XS 18mm	054-4500-1518
XS 20mm	054-4500-1520
S 8mm	054-4500-2508
S 10mm	054-4500-2510
S 12mm	054-4500-2512
S 15mm	054-4500-2515
S 18mm	054-4500-2518
S 20mm	054-4500-2520
M 8mm	054-4500-3508
M 10mm	054-4500-3510
M 12mm	054-4500-3512
M 15mm	054-4500-3515
M 18mm	054-4500-3518
M 20mm	054-4500-3520
L 8mm	054-4500-4508
L 10mm	054-4500-4510
L 12mm	054-4500-4512
L 15mm	054-4500-4515
L 18mm	054-4500-4518
L 20mm	054-4500-4520
XL 8mm	054-4500-5508
XL 10mm	054-4500-5510
XL 12mm	054-4500-5512
XL 15mm	054-4500-5515
XL 18mm	054-4500-5518
XL 20mm	054-4500-5520
XXL 8mm *	054-4500-6508
XXL 10mm *	054-4500-6510
XXL 12mm *	054-4500-6512
XXL 15mm *	054-4500-6515
XXL 18mm *	054-4500-6518
XXL 20mm *	054-4500-6520

TRK Revision Tibial Tray
TiAl6V4 DIN EN ISO 5832-3

XXS *	054-3410-0500
XS	054-3410-1500
S	054-3410-2500
M	054-3410-3500
L	054-3410-4500
XL	054-3410-5500
XXL *	054-3410-6500

TRK Revision TAB
TiAl6V4 DIN EN ISO 5832-3

XXS 6mm *	054-8400-0006
XS 6mm	054-8400-1006
S 6mm	054-8400-2006
M 6mm	054-8400-3006
L 6mm	054-8400-4006
XL 6mm	054-8400-5006
XXL 6mm *	054-8400-6006

XXS 9mm *	054-8400-0009
XS 9mm	054-8400-1009
S 9mm	054-8400-2009
M 9mm	054-8400-3009
L 9mm	054-8400-4009
XL 9mm	054-8400-5009
XXL 9mm *	054-8400-6009

XXS 12mm *	054-8400-0012
XS 12mm	054-8400-1012
S 12mm	054-8400-2012
M 12mm	054-8400-3012
L 12mm	054-8400-4012
XL 12mm	054-8400-5012
XXL 12mm *	054-8400-6012

XXS 15mm *	054-8400-0015
XS 15mm	054-8400-1015
S 15mm	054-8400-2015
M 15mm	054-8400-3015
L 15mm	054-8400-4015
XL 15mm	054-8400-5015
XXL 15mm *	054-8400-6015

XXS 18mm *	054-8400-0018
XS 18mm	054-8400-1018
S 18mm	054-8400-2018
M 18mm	054-8400-3018
L 18mm	054-8400-4018
XL 18mm	054-8400-5018
XXL 18mm *	054-8400-6018

* - optional

TRK Revision FAB
TiAl6V4 DIN EN ISO 5832-3

4mm

XXS 4mm LM/RL DISTAL *	054-0403-0004
XXS 4mm LL/RM DISTAL *	054-0400-0204
XXS 4mm POSTERIOR *	054-0404-1104
XS 4mm LM/RL DISTAL	054-0403-1004
XS 4mm LL/RM DISTAL	054-0400-1204
XS 4mm POSTERIOR	054-0404-2104
S 4mm LM/RL DISTAL	054-0403-2004
S 4mm LL/RM DISTAL	054-0400-2204
S 4mm POSTERIOR	054-0404-3104
M 4mm LM/RL DISTAL	054-0403-3004
M 4mm LL/RM DISTAL	054-0400-3204
M 4mm POSTERIOR	054-0404-4104
L 4mm LM/RL DISTAL	054-0403-4004
L 4mm LL/RM DISTAL	054-0400-4204
L 4mm POSTERIOR	054-0404-5104
XL 4mm LM/RL DISTAL	054-0403-5004
XL 4mm LL/RM DISTAL	054-0400-5204
XL 4mm POSTERIOR	054-0404-6104
XXL 4mm LM/RL DISTAL *	054-0403-6004
XXL 4mm LL/RM DISTAL *	054-0400-6204
XXL 4mm POSTERIOR *	054-0404-7104

8mm

XXS 8mm LM/RL DISTAL *	054-0403-0008
XXS 8mm LL/RM DISTAL *	054-0400-0208
XXS 8mm POSTERIOR *	054-0404-1108
XS 8mm LM/RL DISTAL	054-0403-1008
XS 8mm LL/RM DISTAL	054-0400-1208
XS 8mm POSTERIOR	054-0404-2108
S 8mm LM/RL DISTAL	054-0403-2008
S 8mm LL/RM DISTAL	054-0400-2208
S 8mm POSTERIOR	054-0404-3108
M 8mm LM/RL DISTAL	054-0403-3008
M 8mm LL/RM DISTAL	054-0400-3208
M 8mm POSTERIOR	054-0404-4108
L 8mm LM/RL DISTAL	054-0403-4008
L 8mm LL/RM DISTAL	054-0400-4208
L 8mm POSTERIOR	054-0404-5108
XL 8mm LM/RL DISTAL	054-0403-5008
XL 8mm LL/RM DISTAL	054-0400-5208
XL 8mm POSTERIOR	054-0404-6108
XXL 8mm LM/RL DISTAL *	054-0403-6008
XXL 8mm LL/RM DISTAL *	054-0400-6208
XXL 8mm POSTERIOR *	054-0404-7108

12mm

XXS 12mm LM/RL DISTAL *	054-0403-0012
XXS 12mm LL/RM DISTAL *	054-0400-0212
XXS 12mm POSTERIOR *	054-0404-1112
XS 12mm LM/RL DISTAL	054-0403-1012
XS 12mm LL/RM DISTAL	054-0400-1212
XS 12mm POSTERIOR	054-0404-2112
S 12mm LM/RL DISTAL	054-0403-2012
S 12mm LL/RM DISTAL	054-0400-2212
S 12mm POSTERIOR	054-0404-3112
M 12mm LM/RL DISTAL	054-0403-3012
M 12mm LL/RM DISTAL	054-0400-3212
M 12mm POSTERIOR	054-0404-4112
L 12mm LM/RL DISTAL	054-0403-4012
L 12mm LL/RM DISTAL	054-0400-4212
L 12mm POSTERIOR	054-0404-5112
XL 12mm LM/RL DISTAL	054-0403-5012
XL 12mm LL/RM DISTAL	054-0400-5212
XL 12mm POSTERIOR	054-0404-6112
XXL 12mm LM/RL DISTAL *	054-0403-6012
XXL 12mm LL/RM DISTAL *	054-0400-6212
XXL 12mm POSTERIOR *	054-0404-7112


BIOTECH

Biotech GmbH
Hauptstraße 113
56598 Rheinbrohl Germany
Tel : +49 2635 92221-0
Email : office-de@biotech-medical.net
www.biotech-medical.com

"Movement is Life"

REF:
VB-004-PROSP-PC-04-EN-00

Revision:
1

Publication date:
07.01.2020

CE 1011

Future Knee Modular System

Product Catalog



Biotech GmbH
Hauptstraße 113.
56598 Rheinbrohl Germany
Tel : +49 2635 92221-0
Email : office-de@biotech-medical.net
www.biotech-medical.com



BIOTECH

REF
VB-004-PROSP-PC-06-EN-00

Revision
2
Publication date :
01.04.2022.

CE 1011

"Movement is Life"

CR - CRUCIATE RETAINING

P/S - POSTERIOR STABILIZED

REVISION



PRIMARY AND REVISION COMPONENTS - FLEXIBLE INTRAOPERATIVE VARIABILITY



The Biotech Future Knee- Modular Total Knee System

With the Biotech Future Knee System, there is a wide range of choices of implants that meet the needs of the surgeons, and which provide a high intra operative flexibility, and minimize the restrictions encountered within the conditions of the case study.

Considering these conditions, the Biotech Future Knee System has been designed to provide the solutions for primary, posterior- stabilized and revision indications.

The cemented and uncemented fixations can be easily chosen intra-operatively, and can be implanted with the same set of instruments.

The anatomical design of each component allows the physiological movement to a great extent, thereby overcoming any possible debilitating conditions.

With a total intra-operative flexibility and a single, but accurate set of instruments, a natural joint formation can be developed, and a long life expectancy of the artificial joint can be positively influenced.

Important parameters:

- Primary, P/S and revision components can be flexibly combined according to the surgeon's choice during the operation.
- The Modular Titanium Tibial Tray provides a flexible intra-operative choice between primary and revision stems and it can also be extended by Offsets and Tibial Augmentation Blocks if necessary.
- Maximal surface contact of tibial and femoral components to minimize polyethylene wear.
- Anatomical design for best physiological results.

**FUTURE KNEE
CR Tibial Inserts
UHMWPE DIN EN ISO 5834-2**



XXS 8mm *	050-4500-0108
XXS 10mm *	050-4500-0110
XXS 12mm *	050-4500-0112
XXS 15mm *	050-4500-0115
XXS 18mm *	050-4500-0118
XXS 20mm *	050-4500-0120

XS 8mm	050-4500-1108
XS 10mm	050-4500-1110
XS 12mm	050-4500-1112
XS 15mm	050-4500-1115
XS 18mm	050-4500-1118
XS 20mm	050-4500-1120

S 8mm	050-4500-2108
S 10mm	050-4500-2110
S 12mm	050-4500-2112
S 15mm	050-4500-2115
S 18mm	050-4500-2118
S 20mm	050-4500-2120

M 8mm	050-4500-3108
M 10mm	050-4500-3110
M 12mm	050-4500-3112
M 15mm	050-4500-3115
M 18mm	050-4500-3118
M 20mm	050-4500-3120

L 8mm	050-4500-4108
L 10mm	050-4500-4110
L 12mm	050-4500-4112
L 15mm	050-4500-4115
L 18mm	050-4500-4118
L 20mm	050-4500-4120

XL 8mm	050-4500-5108
XL 10mm	050-4500-5110
XL 12mm	050-4500-5112
XL 15mm	050-4500-5115
XL 18mm	050-4500-5118
XL 20mm	050-4500-5120

XXL 8mm *	050-4500-6108
XXL 10mm *	050-4500-6110
XXL 12mm *	050-4500-6112
XXL 15mm *	050-4500-6115
XXL 18mm *	050-4500-6118
XXL 20mm *	050-4500-6120

**FUTURE KNEE
CR Femoral Components
CoCr
DIN EN ISO 5832-4**

Right

XXS *	050-1311-0058
XS	050-1311-1062
S	050-1311-2066
M	050-1311-3070
L	050-1311-4074
XL	050-1311-5078
XXL *	050-1311-6082



Left

XXS *	050-1312-0058
XS	050-1312-1062
S	050-1312-2066
M	050-1312-3070
L	050-1312-4074
XL	050-1312-5078
XXL *	050-1312-6082

**FUTURE KNEE Modular
Tibial Tray Components
TiAl6V4 DIN EN ISO 5832-3**

XXS *	050-3410-0000
XS	050-3410-1000
S	050-3410-2000
M	050-3410-3000
L	050-3410-4000
XL	050-3410-5000
XXL *	050-3410-6000



**FUTURE KNEE stem
for modular tibial tray
TiAl6V4**

050-5410-0000
available separately



**FUTURE KNEE
P/S Tibial Inserts
UHMWPE DIN EN ISO 5834-2**



XXS 8mm *	056-4500-0208
XXS 10mm *	056-4500-0210
XXS 12mm *	056-4500-0212
XXS 15mm *	056-4500-0215
XXS 18mm *	056-4500-0218
XXS 20mm *	056-4500-0220

XS 8mm	056-4500-1208
XS 10mm	056-4500-1210
XS 12mm	056-4500-1212
XS 15mm	056-4500-1215
XS 18mm	056-4500-1218
XS 20mm	056-4500-1220

S 8mm	056-4500-2208
S 10mm	056-4500-2210
S 12mm	056-4500-2212
S 15mm	056-4500-2215
S 18mm	056-4500-2218
S 20mm	056-4500-2220

M 8mm	056-4500-3208
M 10mm	056-4500-3210
M 12mm	056-4500-3212
M 15mm	056-4500-3215
M 18mm	056-4500-3218
M 20mm	056-4500-3220

L 8mm	056-4500-4208
L 10mm	056-4500-4210
L 12mm	056-4500-4212
L 15mm	056-4500-4215
L 18mm	056-4500-4218
L 20mm	056-4500-4220

XL 8mm	056-4500-5208
XL 10mm	056-4500-5210
XL 12mm	056-4500-5212
XL 15mm	056-4500-5215
XL 18mm	056-4500-5218
XL 20mm	056-4500-5220

XXL 8mm *	056-4500-6208
XXL 10mm *	056-4500-6210
XXL 12mm *	056-4500-6212
XXL 15mm *	056-4500-6215
XXL 18mm *	056-4500-6218
XXL 20mm *	056-4500-6220

**FUTURE KNEE
P/S Femoral
Components - CoCr
DIN EN ISO 5832-4**

Right

XXS *	056-1311-0258
XS	056-1311-1262
S	056-1311-2266
M	056-1311-3270
L	056-1311-4274
XL	056-1311-5278
XXL *	056-1311-6282



Left

XXS *	056-1312-0258
XS	056-1312-1262
S	056-1312-2266
M	056-1312-3270
L	056-1312-4274
XL	056-1312-5278
XXL *	056-1312-6282



**Patella Components
UHMWPE
DIN EN ISO 5834-2**

S	051-7110-0332
M	051-7110-0334
L	051-7110-0337

* - optional

"Movement is Life"

**Future Knee Cemented Revision
femoral components
CoCr DIN EN ISO 5832-4**

Right

XXS *	065-1311-0558
XS	065-1311-1562
S	065-1311-2566
M	065-1311-3570
L	065-1311-4574
XL	065-1311-5578
XXL *	065-1311-6582

Left

XXS *	065-1312-0558
XS	065-1312-1562
S	065-1312-2566
M	065-1312-3570
L	065-1312-4574
XL	065-1312-5578
XXL *	065-1312-6582

**Future Knee Revision
Universal Cemented Stems
TiAl6V4 DIN EN ISO 5832-3**

10x50 *	065-5410-0510
10x80 *	065-5410-0810
10x110 *	065-5410-1110
10x140 *	065-5410-1410
10x170 *	065-5410-1710
12x50 *	065-5410-0512
12x80	065-5410-0812
12x110	065-5410-1112
12x140	065-5410-1412
12x170 *	065-5410-1712
14x50 *	065-5410-0514
14x80	065-5410-0814
14x110	065-5410-1114
14x140	065-5410-1414
14x170 *	065-5410-1714
16x50 *	065-5410-0516
16x80	065-5410-0816
16x110	065-5410-1116
16x140	065-5410-1416
16x170 *	065-5410-1716
18x50 *	065-5410-0518
18x80 *	065-5410-0818
18x110 *	065-5410-1118
18x140 *	065-5410-1418
18x170 *	065-5410-1718

**Future Knee Revision Stem adapters
TiAl6V4 DIN EN ISO 5832-3**

Adapter for Revision Universal Stem 5°, 9°	065-9415-0001
Adapter for Revision Universal Stem 7°	065-9415-0002

**Future Knee Revision Stem offsets
TiAl6V4 DIN EN ISO 5832-3**

Long offset for Tibial Stem Offset	3mm	065-1415-0500
Short offset for Femoral and Tibial Stem	3mm	065-2415-0500
Long offset for Tibial Stem Offset	6mm	065-3415-0500
Short offset for Femoral and Tibial Stem	6mm	065-4415-0500

**Future Knee Revision
Tibial Inserts
UHMWPE DIN EN ISO 5834-2**

XXS 8mm *	065-4500-0508
XXS 10mm *	065-4500-0510
XXS 12mm *	065-4500-0512
XXS 15mm *	065-4500-0515
XXS 18mm *	065-4500-0518
XXS 20mm *	065-4500-0520
XS 8mm	065-4500-1508
XS 10mm	065-4500-1510
XS 12mm	065-4500-1512
XS 15mm	065-4500-1515
XS 18mm	065-4500-1518
XS 20mm	065-4500-1520
S 8mm	065-4500-2508
S 10mm	065-4500-2510
S 12mm	065-4500-2512
S 15mm	065-4500-2515
S 18mm	065-4500-2518
S 20mm	065-4500-2520
M 8mm	065-4500-3508
M 10mm	065-4500-3510
M 12mm	065-4500-3512
M 15mm	065-4500-3515
M 18mm	065-4500-3518
M 20mm	065-4500-3520
L 8mm	065-4500-4508
L 10mm	065-4500-4510
L 12mm	065-4500-4512
L 15mm	065-4500-4515
L 18mm	065-4500-4518
L 20mm	065-4500-4520
XL 8mm	065-4500-5508
XL 10mm	065-4500-5510
XL 12mm	065-4500-5512
XL 15mm	065-4500-5515
XL 18mm	065-4500-5518
XL 20mm	065-4500-5520
XXL 8mm *	065-4500-6508
XXL 10mm *	065-4500-6510
XXL 12mm *	065-4500-6512
XXL 15mm *	065-4500-6515
XXL 18mm *	065-4500-6518
XXL 20mm *	065-4500-6520

**Future Knee FAB
TiAl6V4 DIN EN ISO 5832-3**

4mm

XXS 4mm LM/RL DISTAL *	065-0403-0004
XXS 4mm LL/RM DISTAL *	065-0400-0204
XXS 4mm POSTERIOR *	065-0404-1104
XS 4mm LM/RL DISTAL	065-0403-1004
XS 4mm LL/RM DISTAL	065-0400-1204
XS 4mm POSTERIOR	065-0404-2104
S 4mm LM/RL DISTAL	065-0403-2004
S 4mm LL/RM DISTAL	065-0400-2204
S 4mm POSTERIOR	065-0404-3104
M 4mm LM/RL DISTAL	065-0403-3004
M 4mm LL/RM DISTAL	065-0400-3204
M 4mm POSTERIOR	065-0404-4104
L 4mm LM/RL DISTAL	065-0403-4004
L 4mm LL/RM DISTAL	065-0400-4204
L 4mm POSTERIOR	065-0404-5104
XL 4mm LM/RL DISTAL	065-0403-5004
XL 4mm LL/RM DISTAL	065-0400-5204
XL 4mm POSTERIOR	065-0404-6104
XXL 4mm LM/RL DISTAL *	065-0403-6004
XXL 4mm LL/RM DISTAL *	065-0400-6204
XXL 4mm POSTERIOR *	065-0404-7104

8mm

XXS 8mm LM/RL DISTAL *	065-0403-0008
XXS 8mm LL/RM DISTAL *	065-0400-0208
XXS 8mm POSTERIOR *	065-0404-1108
XS 8mm LM/RL DISTAL	065-0403-1008
XS 8mm LL/RM DISTAL	065-0400-1208
XS 8mm POSTERIOR	065-0404-2108
S 8mm LM/RL DISTAL	065-0403-2008
S 8mm LL/RM DISTAL	065-0400-2208
S 8mm POSTERIOR	065-0404-3108
M 8mm LM/RL DISTAL	065-0403-3008
M 8mm LL/RM DISTAL	065-0400-3208
M 8mm POSTERIOR	065-0404-4108
L 8mm LM/RL DISTAL	065-0403-4008
L 8mm LL/RM DISTAL	065-0400-4208
L 8mm POSTERIOR	065-0404-5108
XL 8mm LM/RL DISTAL	065-0403-5008
XL 8mm LL/RM DISTAL	065-0400-5208
XL 8mm POSTERIOR	065-0404-6108
XXL 8mm LM/RL DISTAL *	065-0403-6008
XXL 8mm LL/RM DISTAL *	065-0400-6208
XXL 8mm POSTERIOR *	065-0404-7108

**Future Knee FAB
TiAl6V4 DIN EN ISO 5832-3**

12mm

XXS 12mm LM/RL DISTAL *	065-0403-0012
XXS 12mm LL/RM DISTAL *	065-0400-0212
XXS 12mm POSTERIOR *	065-0404-1112
XS 12mm LM/RL DISTAL	065-0403-1012
XS 12mm LL/RM DISTAL	065-0400-1212
XS 12mm POSTERIOR	065-0404-2112
S 12mm LM/RL DISTAL	065-0403-2012
S 12mm LL/RM DISTAL	065-0400-2212
S 12mm POSTERIOR	065-0404-3112
M 12mm LM/RL DISTAL	065-0403-3012
M 12mm LL/RM DISTAL	065-0400-3212
M 12mm POSTERIOR	065-0404-4112
L 12mm LM/RL DISTAL	065-0403-4012
L 12mm LL/RM DISTAL	065-0400-4212
L 12mm POSTERIOR	065-0404-5112
XL 12mm LM/RL DISTAL	065-0403-5012
XL 12mm LL/RM DISTAL	065-0400-5212
XL 12mm POSTERIOR	065-0404-6112
XXL 12mm LM/RL DISTAL *	065-0403-6012
XXL 12mm LL/RM DISTAL *	065-0400-6212
XXL 12mm POSTERIOR *	065-0404-7112

**Future Knee TAB
TiAl6V4 DIN EN ISO 5832-3**

XXS 6mm *	065-8400-0006
XS 6mm	065-8400-1006
S 6mm	065-8400-2006
M 6mm	065-8400-3006
L 6mm	065-8400-4006
XL 6mm	065-8400-5006
XXL 6mm *	065-8400-6006

XXS 9mm *	065-8400-0009
XS 9mm	065-8400-1009
S 9mm	065-8400-2009
M 9mm	065-8400-3009
L 9mm	065-8400-4009
XL 9mm	065-8400-5009
XXL 9mm *	065-8400-6009

XXS 12mm *	065-8400-0012
XS 12mm	065-8400-1012
S 12mm	065-8400-2012
M 12mm	065-8400-3012
L 12mm	065-8400-4012
XL 12mm	065-8400-5012
XXL 12mm *	065-8400-6012

XXS 15mm *	065-8400-0015
XS 15mm	065-8400-1015
S 15mm	065-8400-2015
M 15mm	065-8400-3015
L 15mm	065-8400-4015
XL 15mm	065-8400-5015
XXL 15mm *	065-8400-6015

XXS 18mm *	065-8400-0018
XS 18mm	065-8400-1018
S 18mm	065-8400-2018
M 18mm	065-8400-3018
L 18mm	065-8400-4018
XL 18mm	065-8400-5018
XXL 18mm *	065-8400-6018

* - optional

EC CERTIFICATE
Full Quality Assurance System

Directive 93/42/EEC on Medical Devices, Annex II excluding (4)

No. 5-903-200-2103

The NEOEMKI National Medical Device Conformity Assessment and Certification LLC.
certifies that the manufacturer:

Biotech GmbH
Hagenauer Str. 17-19
65203 Wiesbaden
Germany

for the products / product category:

Sterile and non-sterile orthopaedic implant systems

applies a quality system which meets the requirements of Directive 93/42/EEC concerning medical devices, Annex II.

Registry number of the related audit report: **NE/1010/2021**

This certificate is valid together with EC Design-Examination Certificates according to Directive 93/42/EEC on Medical Devices, Annex II (4) **No. 5-904-204-2103** and **No. 5-905-204-2103**.

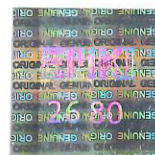
This certificate is valid until **2024-05-26** supposed that the results of the regular yearly surveillance audits are satisfactory.

Issued by NEOEMKI LLC as a Notified Body with identification number **1011**.

This certificate is valid only with the attachment.

Budapest, 2021-03-09


László Imre
Managing Director



EMKI 2680

The authenticity and validity of the certificate are verifiable at NEOEMKI LLC.

neoEMKI Nemzeti Orvostechnikai Eszköz Megfelelőségértékelő és Tanúsító Kft.
neoEMKI National Medical Device Conformity Assessment and Certification LLC.

H-1097 Budapest, Albert Flórián út 3/A, tel: +36 20 268 75 95, e-mail: cert@emki.hu
www.emki.hu



ATTACHMENT TO EC CERTIFICATE

Page 1 of 1

Additional information for Certificate No. 5-903-200-2103

The certificate is valid for the following manufacturing sites / facilities:

Biotech GmbH
Hagenauer Str. 17-19
65203 Wiesbaden, Germany

Biotech GmbH Magyarországi Fióktelepe
Petőfi Sándor utca 43-47
2049 Diósd, Hungary

The certificate is valid for the following products:

<i>Sterile and non-sterile orthopaedic implant systems</i>	<i>Class</i>
Biotech Sterile Knee Endoprosthesis Systems	III
Instruments and Trial Tray for Biotech Sterile Knee Endoprosthesis Systems	IIa
Biotech Sterile Hip Endoprosthesis Systems	III
Instruments and Trial Tray for Biotech Sterile Hip Endoprosthesis Systems	IIa
Biotech Traumatological Implant Systems for Osteosynthesis	IIb
Biotech Pectus Bar Correct System	IIb
Biotech Spinal Implant System	IIb

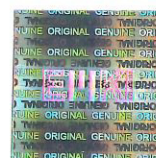
The detailed product list is kept by NEOEMKI LLC. under No. 1010/2020.

Issue: 1

Date: 2021-03-09

First issued: 2021-03-09

László Imre
Managing Director



EMKI

EC DESIGN-EXAMINATION CERTIFICATE

Directive 93/42/EEC on Medical Devices, Annex II (4)

No. 5-904-204-2103

The NEOEMKI National Medical Device Conformity Assessment and Certification LLC.
certifies that the following manufacturer's

Biotech GmbH
Hagenauer Str. 17-19
65203 Wiesbaden
Germany

product's

Biotech Sterile Knee Endoprosthesis System
(models listed in the attachment)

design dossier conforms to the requirements of Directive 93/42/EEC concerning medical devices, Annex II.

Registry number of the report on the examination of the design dossier: **NE/1010/2021**

This certificate is valid only together with EC Certificate according to Directive 93/42/EEC on Medical Devices, Annex II excluding (4) No. **5-903-200-2103**.

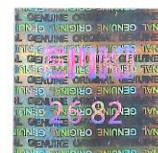
This certificate is valid until: **2024-05-26**

Issued by NEOEMKI LLC. as a Notified Body with identification number **1011**.

This certificate is valid only with the attachment.

Budapest, 2021-03-09


László Imre
Managing Director



EMKI 2682

The authenticity and validity of the certificate are verifiable at NEOEMKI LLC.

neoEMKI Nemzeti Orvostechnikai Eszköz Megfelelőségértékelő és Tanúsító Kft.
neoEMKI National Medical Device Conformity Assessment and Certification LLC.

H-1097 Budapest, Albert Flórián út 3/A, tel: +36 20 268 75 95, e-mail: cert@emki.hu
www.emki.hu



ATTACHMENT TO EC DESIGN-EXAMINATION CERTIFICATE

Page 1 of 1

Additional information for Certificate No. 5-904-204-2103

The certificate is valid for the following manufacturing sites / facilities:

Biotech GmbH
Hagenauer Str. 17-19
65203 Wiesbaden
Germany

Biotech GmbH Magyarországi Fióktelepe
Petőfi Sándor utca 43-47
2049 Diósd
Hungary

The certificate is valid for the following products / models:

Biotech Sterile Knee Endoprosthesis System

	Class
TP Total Knee System	III
TRK Total Revision Knee System	III
Future Knee Modular System	III
Future Knee 1 System	III
HF - High Flexion Knee System	III
Biotech Constrained Knee System	III
BMI Unicondylar Knee System	III
TMB Total Rotating Knee System	III

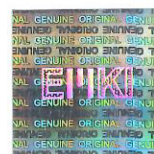
The detailed product list is kept by NEOEMKI LLC. under No. 1010/2020.

Issue: 1

Date: 2021-03-09

First issued: 2021-03-09


László Imre
Managing Director



EMKI

neoEMKI Nemzeti Orvostechnikai Eszköz Megfelelőségértékelő és Tanúsító Kft.
neoEMKI National Medical Device Conformity Assessment and Certification LLC.

H-1097 Budapest, Albert Flórián út 3/A, tel: +36 20 268 75 95, e-mail: cert@emki.hu
www.emki.hu



EC DESIGN-EXAMINATION CERTIFICATE

Directive 93/42/EEC on Medical Devices, Annex II (4)

No. 5-905-204-2103

The NEOEMKI National Medical Device Conformity Assessment and Certification LLC.
certifies that the following manufacturer's

Biotech GmbH
Hagenauer Str. 17-19
65203 Wiesbaden
Germany

product's

Biotech Sterile Hip Endoprosthesis System
(models listed in the attachment)

design dossier conforms to the requirements of Directive 93/42/EEC concerning medical devices, Annex II.

Registry number of the report on the examination of the design dossier: **NE/1010/2021**

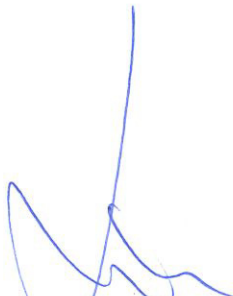
This certificate is valid only together with EC Certificate according to Directive 93/42/EEC on Medical Devices, Annex II excluding (4) No. **5-903-200-2103**.

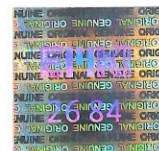
This certificate is valid until: **2024-05-26**

Issued by NEOEMKI LLC. as a Notified Body with identification number **1011**.

This certificate is valid only with the attachment.

Budapest, 2021-03-09


László Imre
Managing Director



EMKI 2684

The authenticity and validity of the certificate are verifiable at NEOEMKI LLC.

neoEMKI Nemzeti Orvostechnikai Eszköz Megfelelőségértékelő és Tanúsító Kft.
neoEMKI National Medical Device Conformity Assessment and Certification LLC.

H-1097 Budapest, Albert Flórián út 3/A, tel: +36 20 268 75 95, e-mail: cert@emki.hu
www.emki.hu



ATTACHMENT TO EC DESIGN-EXAMINATION CERTIFICATE

Page 1 of 1

Additional information for Certificate No. 5-905-204-2103

The certificate is valid for the following manufacturing sites / facilities:

Biotech GmbH
Hagenauer Str. 17-19
65203 Wiesbaden
Germany

Biotech GmbH Magyarországi Fióktelepe
Petőfi Sándor utca 43-47
2049 Diósd
Hungary

The certificate is valid for the following products / models:

Biotech Sterile Hip Endoprosthesis System

	Class
Biotech Modular Head System	III
Biotech Acetabular Cup System	III
BA Hip Stem System	III
SKM Hip Stem System	III
BET Hip Stem System	III
BQS Hip Stem System	III
Biotech Modular Revision Hip Stem System	III
Austin Moore Hip Stem System	III

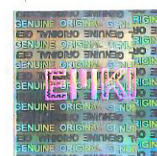
The detailed product list is kept by NEOEMKI LLC. under No. 1010/2020.

Issue: 1

Date: 2021-03-09

First issued: 2021-03-09


László Imre
Managing Director



EMKI

neoEMKI Nemzeti Orvostechnikai Eszköz Megfelelőségértékelő és Tanúsító Kft.
neoEMKI National Medical Device Conformity Assessment and Certification LLC.

H-1097 Budapest, Albert Flórián út 3/A, tel: +36 20 268 75 95, e-mail: cert@emki.hu
www.emki.hu



QUALITY MANAGEMENT SYSTEM CERTIFICATE

No. 4-561-135-2112

The NEOEMKI National Medical Device Conformity Assessment and Certification LLC.

as a Certification Body with ID No. NAH-4-0009/2021/K
accredited by the National Accreditation Authority for management system certification
certifies that the quality management system applied by

BIOTECH GmbH
Hagenauer Str. 17-19, 65203 Wiesbaden
Germany
and
Magyarországi Fióktelepe
Petőfi Sándor utca 43-47, 2049 Diósd
Hungary

meets the requirements of standard

EN ISO 13485:2016

in the field:

**Design, development, manufacture and distribution
of non active surgical implant systems;
Design, development, manufacture and distribution
of surgical instrument systems**

Registry number of the related audit report: **NE/1010/2021**

This certificate is valid until **2024-09-08** supposed that the results of the regular yearly
surveillance audits are satisfactory.

Budapest, 2021-12-30


László Imre
Managing Director



EMKI 2796

The authenticity and validity of the certificate are verifiable at NEOEMKI LLC.

neoEMKI Nemzeti Orvostechnikai Eszköz Megfelelőségértékelő és Tanúsító Kft.
neoEMKI National Medical Device Conformity Assessment and Certification LLC.

H-1097 Budapest, Albert Flórián út 3/A, tel: +36 20 268 75 95, e-mail: cert@emki.hu
www.emki.hu





Item Code : 369D.105

OSCILLATING SAW, BATTERY OPERATED

Technical Specifications

Hand piece	:Working voltage	:14.4 V
	Output power	: $\geq 90W$
	Unit rise in temp	: $\leq 20^{\circ} C$
Charger	:Input voltage	:AC 110V-240V 50HZ-60HZ
	Output power	:14.4v 900ma
	Input power	:30 W
Battery	:Voltage	:14.4 V
	Battery Backup	:2 hours
Speed	:0-20000	:osc/m
Noise	: $\leq 70db$	
Sterilized	: $\leq 135^{\circ} C$	



WHO
GMP
COMPLIANT

ISO
13485:2003
CERTIFIED

ISO
9001:2000
CERTIFIED

Packing: Packed in Aluminum carrying case.

Standard Set Contents:

- 2pcs Saw Blades
- 2pcs. Battery
- 1 pc. Charger
- 2 pcs Sterilizing Rings

Apothecaries' Sundries Manufacturing Co.,
P.O. Box No.1, New Delhi – 110001, India
Admn. Office : ASCO House, 13 Community Center,
Mayapuri Phase 1, New Delhi – 110064, INDIA
Tel: +91-11 456 456 56 FAX: +91-11 45501028
Email: info@ascomedical.com
Website: www.ascomedical.com

Government of India recognised

"STAR EXPORT HOUSE"



CERTIFICATE

This Certificate is issued to

Apothecaries' Sundries Manufacturing Co.

'ASCO' House
229, Udyog Vihar Phase IV,
Gurugram-122015, Haryana
INDIA

Who have implemented a Quality Management System, which Meets the requirements laid down in ISO 13485:2016, with the following scope:

Manufacture and Supply of Medical, Surgical, Laboratory Device & Equipments.

Certificate No : QL-I-1006-1126
Original Issue : 10 February 2021
Latest Issue : 10 February 2021
Valid Till : 9 February 2024

The Continuing Validity of this Certificate is Subject to timely Conduct of Surveillance audits



for QL Certification Authorised Signatory

ISO 13485:2016

To check the validity of the certificate, email to verify@ql-certification.com
Colored reproduction of this certificates is not permitted.
Upon request, the Certificates shall be returned to QL Certification

QL Certification

Austria

Australia

Hong Kong

India

China

www.ql-certification.com



CERTIFICATE

The location-wise activities included in certificate No. QL-I-1006-1126 are:

S.No.	Location	Certified Activities
1.	Office: Apothecaries' Sundries Manufacturing Co 'ASCO' House, 229, Udyog Vihar Phase IV, Gurugram-122015, Haryana India	Top Management, Purchase and Marketing
2.	Office: Apothecaries' Sundries Manufacturing Co 'ASCO' House, 13, Community Center, Mayapuri, Phase I New Delhi 110064 India	
3.	Factory: Apothecaries' Sundries Manufacturing Co. F 1, Sector A2 Tronica City, Loni Ghaziabad Uttar Pradesh India	Production, QA, Training, Stores and Dispatch
4.	Factory: Apothecaries' Sundries Manufacturing Co. F 10, Sector A2 Tronica City, Loni Ghaziabad Uttar Pradesh India	Production, QA, Training, Stores and Dispatch

Valid Till 9 February 2024



for QL Certification Authorised Signatory

ISO 13485:2016

To check the validity of the certificate, email to verify@ql-certification.com
Colored reproduction of this certificates is not permitted.
Upon request, the Certificates shall be returned to QL Certification

QL Certification

Austria

Australia

Hong Kong

India

China

www.ql-certification.com