



Leadership is in its blood



ARK 980 Butterfly Valve Double Eccentric Double Flanged

- Product description** → Butterfly valves; the body consists of a compact gearbox, which is designed in accordance with the capacity of the valve and the opening and closing torque integrated on the housing
- Fields of Application** → Pumping stations, high level reservoirs, filter systems, oil and other liquid transfer systems, irrigation networks and power plants
- Pressure Class** → PN10-PN16-PN25
- Relevant Standards** → TS EN 558 series I, DIN3202 F4, TS EN 593+A2, TS EN 1092-2
- Accessory** → Electric actuator, Hydraulic actuator, Pneumatic actuator
- Paint** → WRAS approved blue electrostatic epoxy powder paint (RAL 5005)

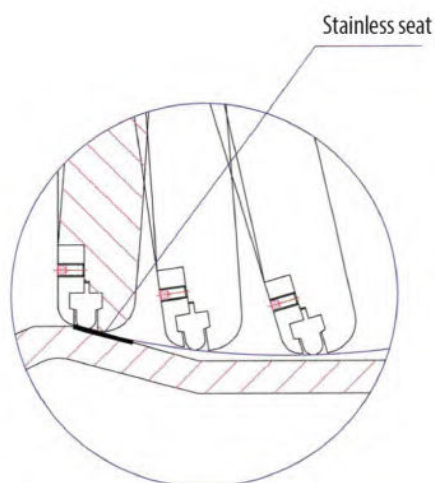


Figure 1

Body and disc are designed to show minimum resistance to flow. Sealing on stainless seat surface (see Figure-1) is ensured with T-section rubber gasket retained by pressure ring around disc peripherally. When valve is in closed position, sealing ring presses on conical body seat surface and provides an absolute sealing in both directions. While valve is fully closed or while valve is being brought to open position from closed position, stainless steel seat surface extends rubber gasket's life and thus, ensures continuity of sealing.

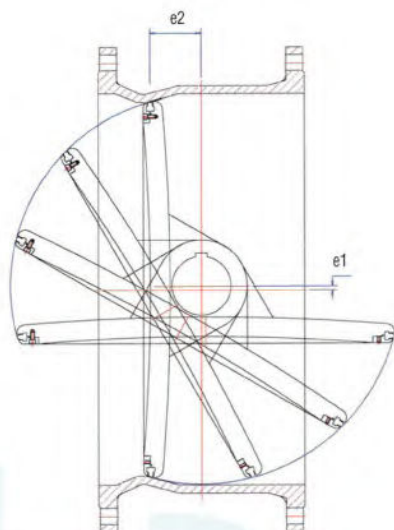
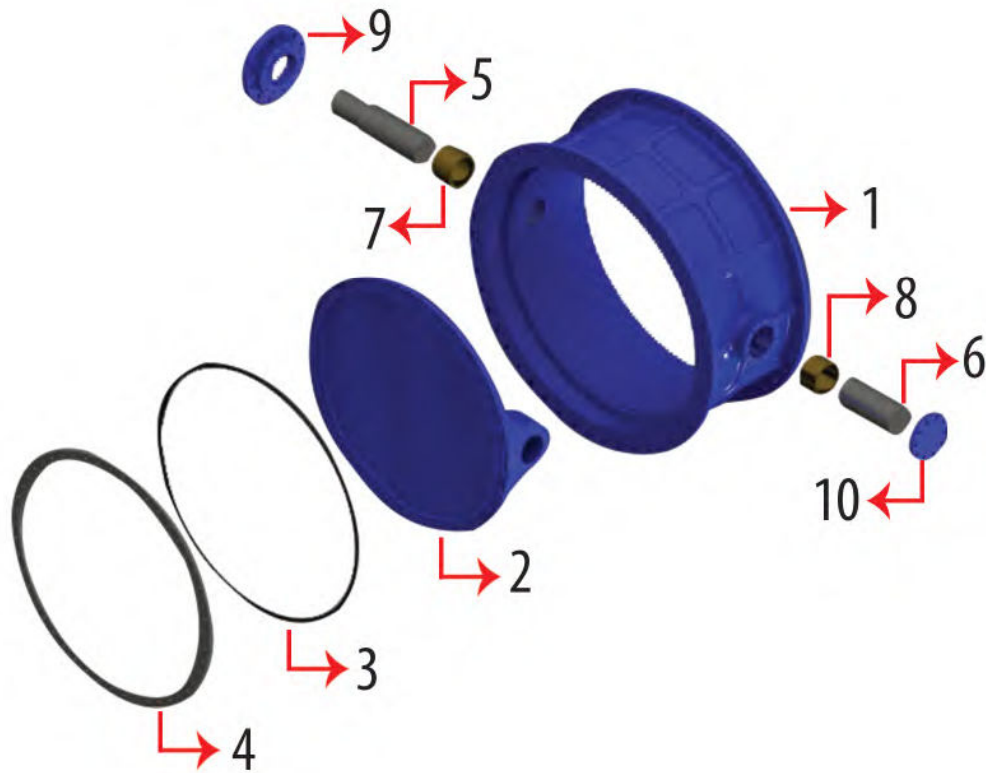


Figure 2

In double eccentric (see Figure-2) design, while first eccentric (e1) valve is being brought to open position, it reduces pressure force impact of fluid on disc and it provides long-term sealing by preventing deformations on sealing ring. Second eccentric (e2) moves sealing axis out of shaft axis to ensure uninterrupted contact between body seat and sealing ring.

ARK 980 Butterfly Valve

Double Eccentric Double Flanged

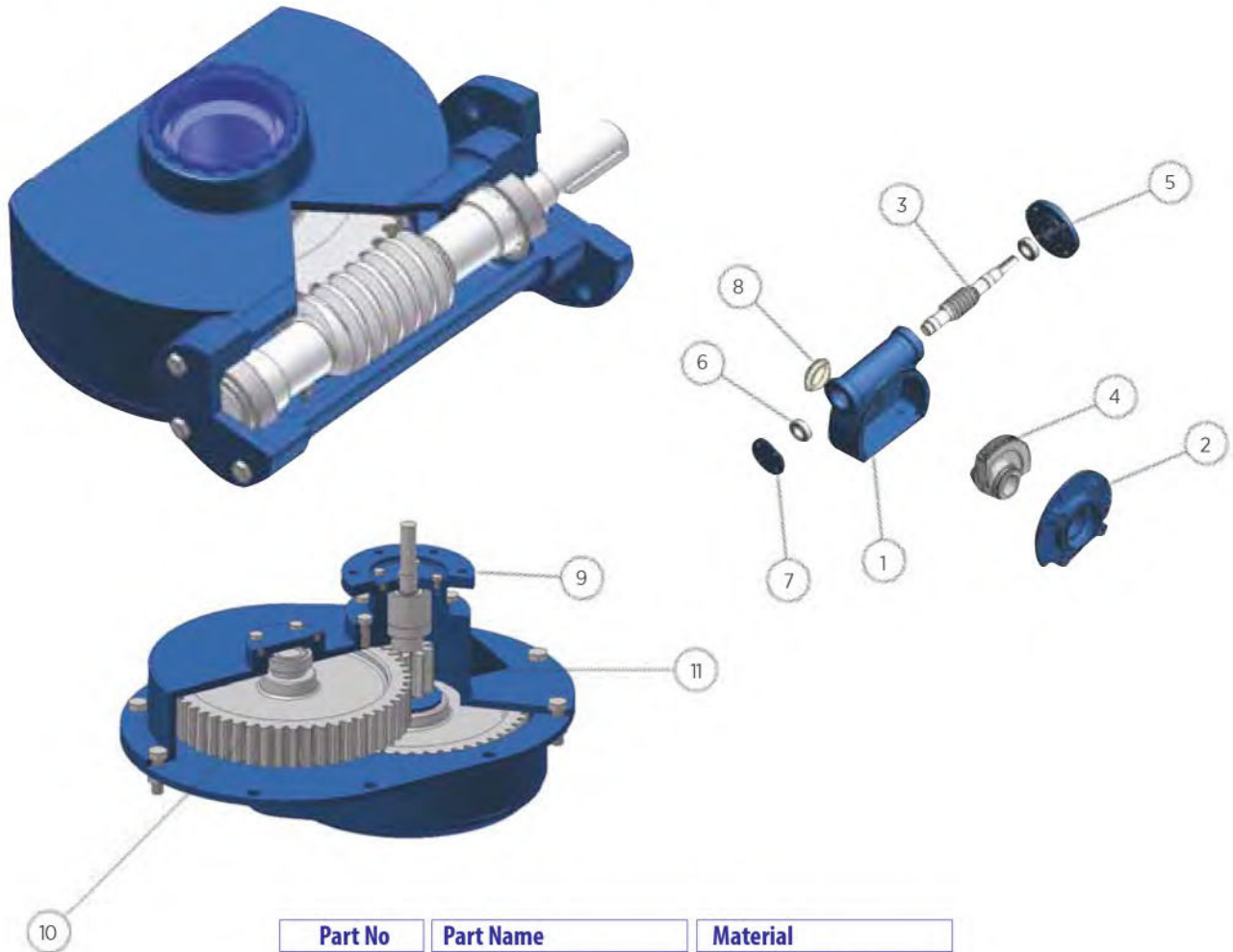


Part No	Part Name	Material
1	Body	GGG40 - GGG50
2	Disc	GGG40 - GGG50
3	Sealing Ring	EPDM
4	Retaining Ring	GGG40 - SS 304
5	Drive Shaft	SS 420 - SS 304
6	Free Shaft	SS 420 - SS 304
7	Drive Shaft Bush	Bronze
8	Free Shaft Bush	Bronze
9	Key	St-50 - SS 304
10	Free Shaft Cover	GGG40 - GGG50

- A2-70 quality stainless steel is used for all fasteners (bolt, nut, washer).
- All sealing elements (o-ring, gasket) are made of EPDM.

ARK 980 Butterfly Valve Double Eccentric Double Flanged

Arkoç Gearbox is used to reduce momentum required to turn valve control shaft through proportional gears. While opening-closing momentum of the valve on which gearbox is mounted reduces, number of turning required for opening-closing increases.

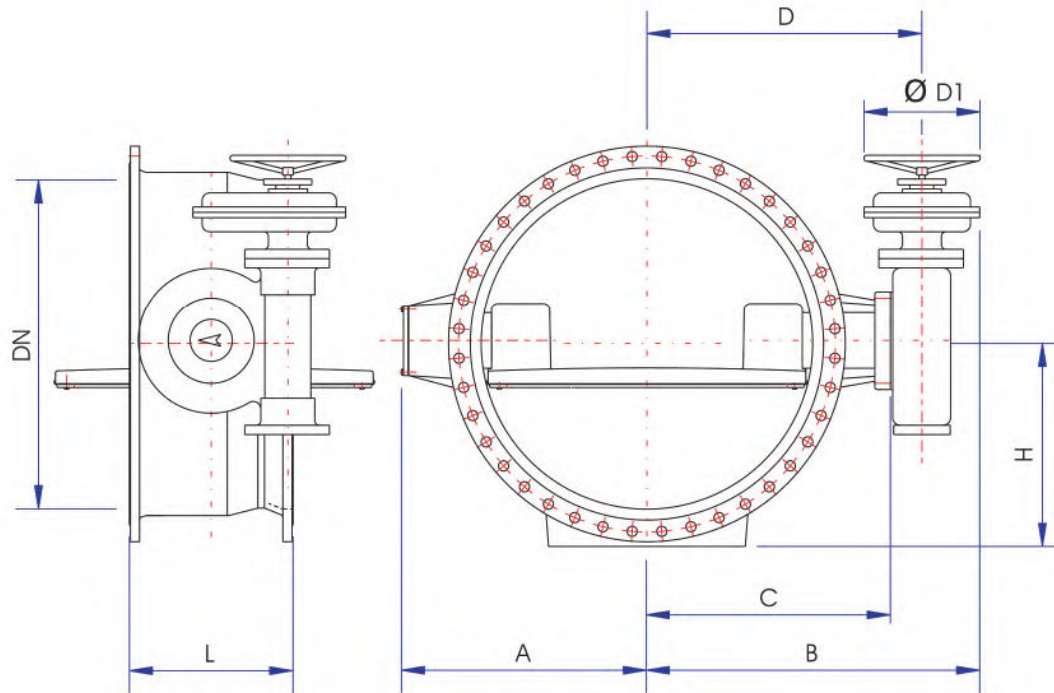


Part No	Part Name	Material
1	Main body	GGG40 – GGG50
2	Main body cover	GGG40 – GGG50
3	Worm	Ç- 1050
4	Worm gear	GGG40 – GGG50
5	Upper gearbox connecting piece	GGG40 – GGG50
6	Adjusting nut	CK45
7	Adjusting nut cover	GGG40 – GGG50
8	On-off indicator	Pilexi glass
9	Actuator connecting piece	GGG40 – GGG50
10	Spur gear	Ç- 1050
11	Pinion gear	Ç- 1050

- A2-70 quality stainless steel is used for all connection elements (bolt, nut, washer).
- All sealing elements (o-ring, gasket) are EPDM.

ARK 980 Butterfly Valve

Double Eccentric Double Flanged



DN	L	A	B	C	D	H	ØD1	Gearbox
100	190	125	265	140	195	115	250	ADK-01
125	200	135	270	150	200	140	250	ADK-01
150	210	155	275	160	210	150	250	ADK-01
200	230	170	320	200	257	175	250	ADK-01
250	250	200	350	225	290	210	250	ADK-01
300	270	235	400	275	340	235	250	ADK-02
350	290	265	430	290	370	270	250	ADK-02
400	310	295	465	325	420	300	250	ADK-02
450	330	340	515	360	450	330	380	ADK-02
500	350	360	550	395	490	370	480	ADK-03
600	390	430	610	460	545	430	480	ADK-03
700	430	475	640	490	575	465	480	ADK-03
800	470	550	865	585	695	520	480	ADK-03
900	510	615	910	630	740	570	480	ADK-03
1000	550	675	975	690	805	630	480	ADK-04
1100	590	760	1050	770	875	730	480	ADK-04
1200	630	805	1170	815	950	750	480	ADK-04
1300	670	850	1235	880	1020	805	480	ADK-04
1400	710	920	1260	915	1050	850	600	ADK-05
1500	750	975	1305	995	1135	920	600	ADK-05
1600	790	1075	1420	1055	1200	1000	600	ADK-05
1800	870	1195	1535	1170	1325	1070	600	ADK-06
2000	950	1290	1725	1270	1470	1185	600	ADK-06
2200	1030	1445	1880	1425	1620	1295	600	ADK-06

* Length measurements are given in "mm".