

____ MICARE LIGHTING
PUSHING TECHNOLOGY TO EXCELLENCE

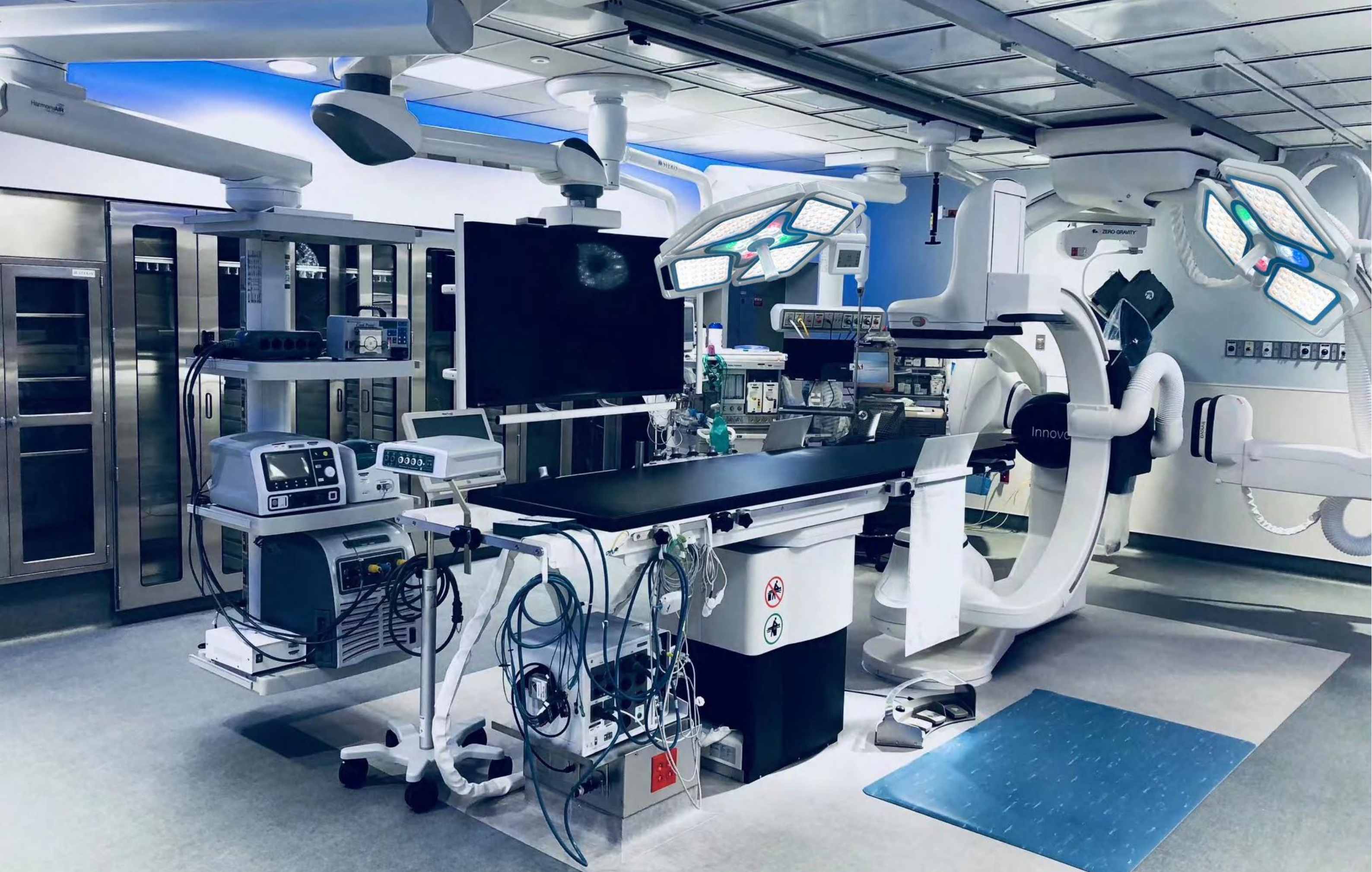
E700/500 Hybrid Room OR Light — UNIQUE DESIGN FOR IDEAL LIGHTING

Demanding tasks require special solutions. With the innovative surgical lights we give you all the benefits of cutting-edge LED technology, in a uniquely effective way. MICARE offers trendsetting light and system solutions that can be retrofitted easily and without special preparation. This includes, for example, the wireless equipping of your surgical lights with cameras.

Version 05-03-2025

INNOVATIVE & DIFFERENT







High quality LEDs

with the lowest infrared or ultraviolet emissions, protects the patient from drying out of the tissue and provides a high quality working condition with the constant high-class lighting temperature to the operator.



Active Shadow Management

light precisely where you need it with E700/500 Active Shadow Optional Management is a fully automatic system for ensuring that light is always available exactly where it is needed.



Perfect and even illumination

can be adjusted for any situation 112PCS powerful LEDs ensure that the surgical site always appears in the best light, literally. The conditions for a successful procedure are always ideal.

Beam path for maximum variability

And that particularly applies to the surgical field and how it is illuminated. With its innovative beam path concept the E700/500 offers you a previously unattainable light field size from 15 cm to 35 cm.



Your benefits at a glance:

- Warm white/cold white LEDs for brilliant, homogenous light
- Variable light field geometry and matrix light function
- Active Shadow Management for shadow-free illumination
- combined with excellent color rendering
- Maximum light field variability with innovative beam path concept
- SYNC Mode Control optional to provide easy working for 2 lamps
- Wireless infrared remote control optional

TREMELY FUNCTIONAL

You have options for operating E700/500. The control panel on the light for setting the main functions. You can use the touch-sensitive controller to adjust every parameter for your specific requirements during the operation. And even better: you can set your own "personal light", the precise light settings that you prefer. You can also control all the functions of the E700/500 camera systems without difficulty. All completely intuitive with the self-explanatory, icon-based operation of the touch screen.

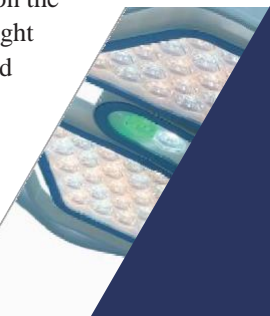
Flexible Manage

4.3Inches TFT LCD Touch Screen With Functional:
Light Intensity , Light Beam , Color Temperature,
Endo Light Control



Ambiant Lights Balance

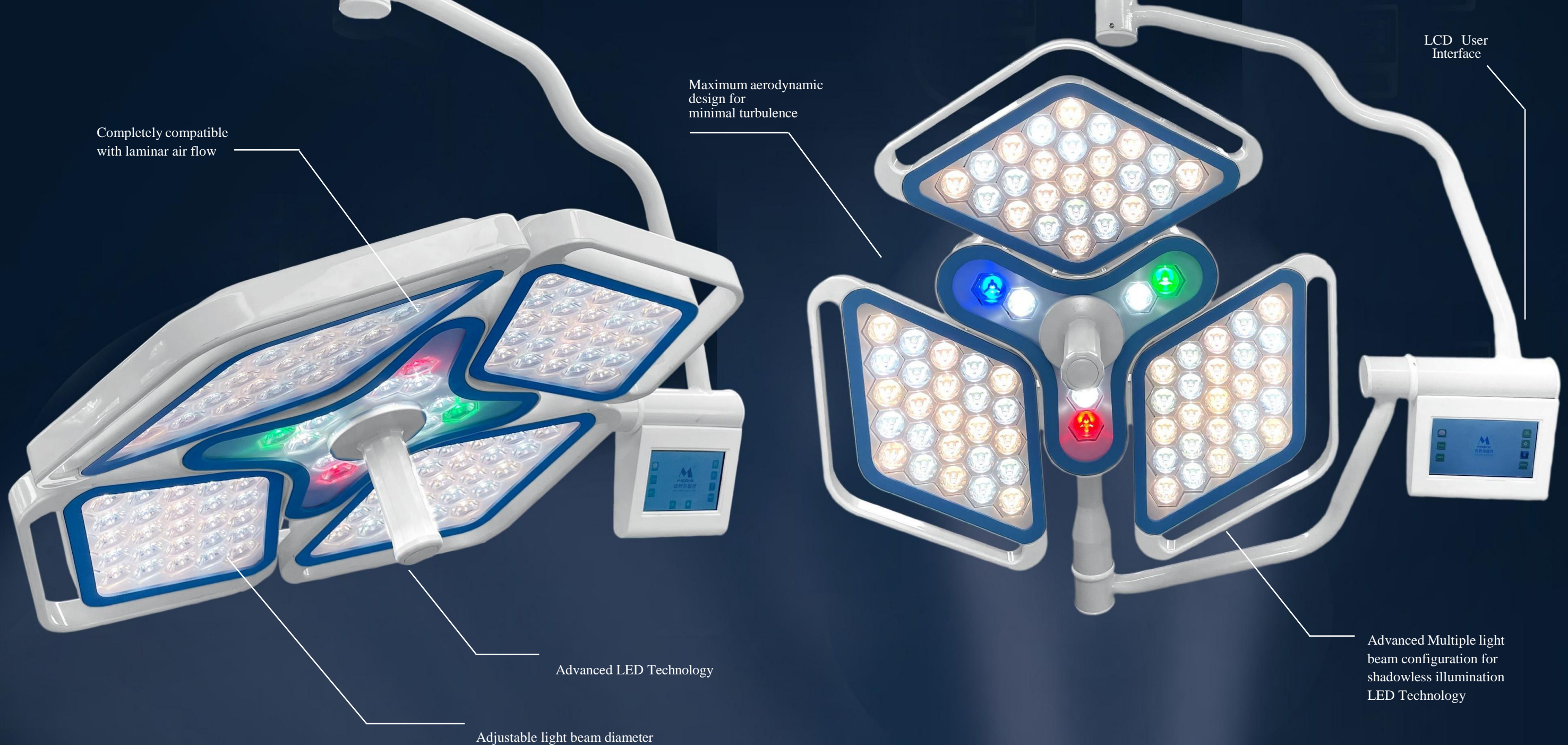
Green Ambient in Endolight less stressful on the eyes during surgery
Red Ambient In Endolight provides optimum visualisation of red tissues. Red balance enhancement compensates for our natural weakness in distinguishing shades of red and is user adjustable to fine-tune the light to match our own red vision and the surgical conditions.



Language Customization

E700/500 supports different languages customization: Spanish, French, Russian, Portuguese, Arabic, German, Italian, Japanese, Korean etc.





LAMINAR AIR FLOW COMPLIANCY "MICARE E700/500 Surgical Light"

According to DIN standard 1946-4 Laminar air flow ceilings are essential in operating theatres to limit the levels of contaminants in the air and thus the risks of post-operative infections for patients. The vertical outflows are generated by ceiling outlets recovering the zone to be protected, and it is crucial that surgical lights do not disturb the air flow. MCARE Galaxy surgical lights were sent to a centre of expertise in air filtration systems, in order to determine its impact on laminar flows in actual operating theatre conditions. Furthermore, the turbulence degree is exceptionally far below the 37.5% limit of the DIN standard. Its unique design, its smooth surface and its low heat dissipation ensure an optimum operating environment for both patients and surgeons.



Multi Colours Adjustable color control



3,000 K 4,000 K 4,500 K 5,000 K 5,800 K
E700/500 provides adjustable color temperature to optimize visualization of red tissues.

- Multiple Light Beam Configuration for Shadowless Illumination
- Improved Beam Technology
- No flicker effect
- Quality Light
- Super Optical Performance
- 4.3" TFT LCD Touch Screen Panel
- Memory function
- Easy to clean
- Endo Mode
- Ergonomic and practical design
- Laminar Air Flow
- Quick and comfortable usage
- Extra Protection



Maximum consistent

Adaptive color temperature combined with excellent color rendering – for a very natural view

The illuminance and the color temperature can be set precisely and retained in order to create and maintain a consistent ideal light situation and mood. The color rendering index is at the top level, as impressively confirmed by the outstanding quality of the E700/500 system



Your benefits at a glance:

- Functional slimline design of the light housing
- Light-emitting area from genuine glass
- Easy-to-clean closed housing shape – therefore extremely hygienic
- Shape optimized for flow to prevent air turbulence
- Suitable for laminar air flow systems
- IP55: complete protection from dust deposits and moisture inside

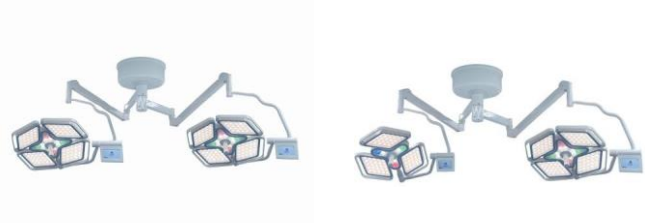
E700/500

TECHNICAL SHEET

E700/500

TECHNICAL SHEET

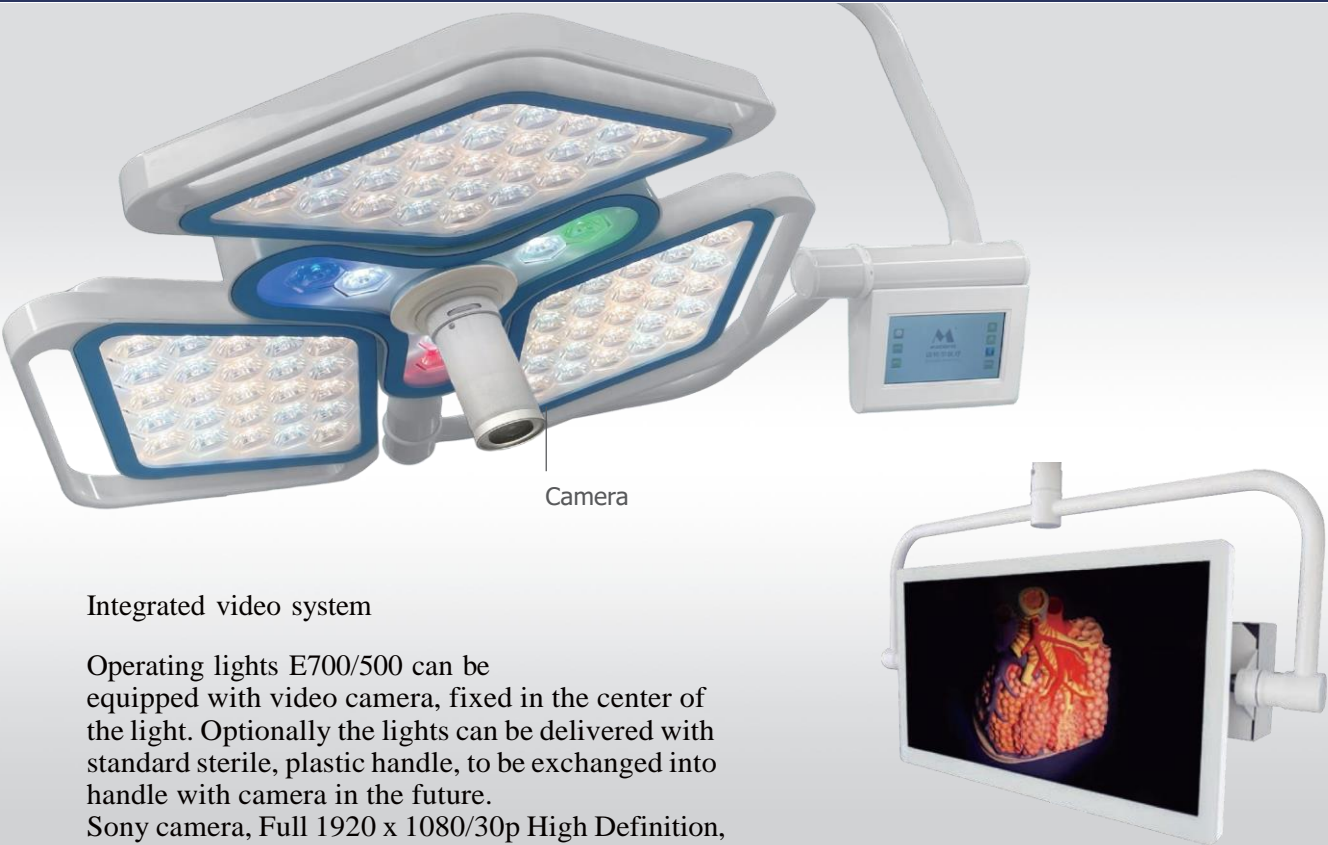
E700/500 is the intelligent solution for any operating theatre. The design is optimized for an OR’s air flow, improving air flow circulation in the operating area and reducing the potential for contamination. In addition, the Dynamic Obstacle Compensation of E700/500 automatically adapts to the shadows in the light field. Furthermore, Intuitive Sterile Surgeon Control makes surgical operations safer and more ergonomic for surgeons. The user interface design is simplicity itself – anyone can use it.



Model	E700/500
Voltage	95-245V, 50/60HZ
Light Intensity at 1m (EC)	60,000-160,000 / 40,000 -140,000
Light Intensity Adjustable	0%-100%
Lamp Head Diameter(MM)	650/650
LED Bulb Quantity	112 + 82 PCS
Bulb Life (HRS)	≥ 80,000
Color temperature(Kelvin)	3,000 -5,800
Color rendering index Ra	96
Color rendering index R9	98
Spot Size Beam	150-350
Total Radiant Flux Density	364W/m²
Endo Ambient Lights	Green + Red + Blue
Endo Lights Quantity (PCS)	12 + 6
Light Intensity For Endo Lights	12%
Rated Power	190W
Depth of illumination (L1+L2)	1300MM
Class Of Protective	IP55
Main Material	PC+PBT
Rotation	540°
4.3” TFT LCD Touch Screen	Yes
Dynamic Obstacle Shadow Compensation	Yes
Back Up Rechargeable Battery (4 hrs)	Yes
Internal Sony Camera 20X	Yes
Remote Control	Optional
LED Brand	OSRAM

Each medical specialty requires particular and specific installations. The modular design of E700/500 surgical lighting with multiple associated products brings a unique architectural, tailor-made solution which precisely responds to both your current and future needs.

Additional Equipment and Functions



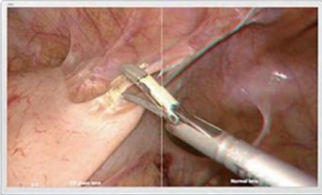
Integrated video system

Operating lights E700/500 can be equipped with video camera, fixed in the center of the light. Optionally the lights can be delivered with standard sterile, plastic handle, to be exchanged into handle with camera in the future. Sony camera, Full 1920 x 1080/30p High Definition, adjustable from keyboard.

Camera Specifications	Details
Image Device	1/2.8 type Exmor™ CMOS sensor (SONY Brand)
Effective Pixels	Approx. 2 million
Digital Zoom	20X Optical Zoom, 12X Digital Zoom
Horizontal Viewing Angle	54.1° (wide end) to 2.9° (tele end)
Monitor Size	24Inches Standard , 27Inches Optional
Electronic Shutter	1/2 to 1/10,000 s
White Balance	Auto
Focus System	Auto
Exposure Control	AE Control: Auto, Manual, Priority (shutter priority and iris priority)
Video Output	Details
Lens Value	20x Optical Zoom, f=4.7 mm (wide) ~ 94.0 mm (tele), f1.6 to f3.5
S/N Ratio More	More than 50 dB
Signal System	Signal System HD: 1080p/29.97, 1080p/25, 1080i/59.94, 1080i/50, 720p/50, 720p/29.97, 720p/25 SD: NTSC/PAL

High Image Quality

- Camera With 20X Optical Zoom With 1920*1080P HD Solution
- Finely Textured Images With Clear, Sharp Colors
- Remarkably Better Colors For Better Attention To Detail And A Brilliant Rendition



Ultra High Definition

- Exmor R Sensor - Clearer Images In Every Condition
- Twice As Sensitive As Conventional Sensors
- Higher Image Quality In Low Light Conditions

Easy Handling

- Easy Installation And Modification Or Retrofitting Of
- Existing OR Light Systems
- Mechanical And Electronical Image Rotation
- Flexible And Independent Operation Via Remote Control
- Optional Operation Via Wall Control Unit



CONSISTENTLY TOP-NOTCH PRODUCT QUALITY

In recent years, we have developed to become one of the world's leading producers of hospital solutions. We operate and produce according to our philosophy "Pushing Technology to Excellence" at all times. Our work is based on three pillars: innovation, global footprint



Innovative solutions

For MICARE, innovation means adding value to the customer. MICARE products provide a great deal of flexibility, and our numerous patents are testament to their exceptional level of technical innovation; these qualities have helped MICARE become a key company in medical technology.



Diversification

MICARE has continuously been developing new and innovative products since its foundation, always in line with MICARE's philosophy as a solution provider for the hospital with focus on the OR.



Global

As an internationally operating company, we sell in more than 90 countries-world wide.



Cooperation

Being a reliable business partner



NANCHANG MICARE MEDICAL EQUIPMENT CO.,LTD.

Tel: 86-791-88127989

Add: Yaohu West 5th Road, Hi-Tech Zone, Nanchang, Jiangxi, China

**CE, ISO13485, ISO9001, FDA,
FREE SALE CERTIFICATE**

MICARE MEDICAL WE OFFER EXCELLENCE FOR YOUR HOSPITAL

As a surgical lighting solution provider, MICARE Medical has more than 20 years of experience, great innovative capacity and invaluable know-how for medical technology solutions. Thank to our proximity to our customers and understanding of their needs, we guarantee you excellent products.