



INSTRUCTIONS FOR USE:

When the dispenser is receiving power, the LED will flash GREEN and RED to let your know it is functioning. When in standby, the LED will flash GREEN every five seconds.

Open front cover and press ON / OFF to turn the dispenser on or off. (ON:the LED will flash GREEN; OFF: the LED will flash RED).

Press the  button, the LED will flash GREEN once to indicate that the signal is received, the LED will be in GREEN and the dispenser will discharge one dose when you trip the sensors.

Press the  button, the LED will flash GREEN twice to indicate that the signal is received, the LED will be in GREEN and the dispenser will discharge two doses when you trip the sensors.

When use at first time,trip the sensors underneath with the hand 5 ~ 8 times, the liquid can be discharged normally after the air is exhausted.

The soap dispenser is not working when the cover is opened. Please close the front cover after adjusting the liquid discharge position.

LED:

- 1.When the dispenser is powered on or the dose is adjusted, LED will flash GREEN 1 or 2 times continuously.
- 2. The LED will flash GREEN every five seconds when in standby.
- 3.The GREEN LED will light up when the dispenser is discharging doses.
- 4. The LED will flash RED when battery is in low power; The LED will flash RED and GREEN at same time when battery is in deep low power.
- 5.The LED will flash GREEN and RED alternately when the dispenser senses abnormalities, such as: filter clogging, power exhaustion, no liquid discharge,etc.. If the abnormality is eliminated, shut down and restart to return to normal.
- 6.The LED wil flash GREEN continuously when there is an obstacle below the dispenser, remove the obstacle to return normal.

INSTRUCTIONS FOR CLEANING OR REPLACING THE FILTER

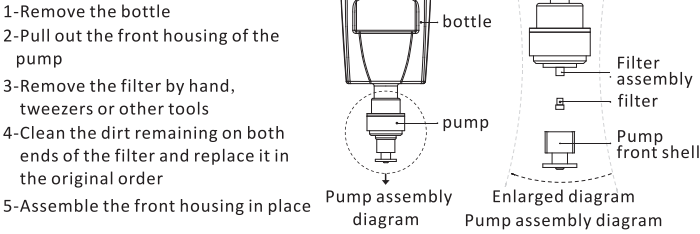
This content applies: Foam soap dispenser, it is recommended to clean or replace filter accessories in the following cases:

- 1-No foam or little foam
- 2-Stop for one week after use
- 3-Used for more than 3 months
- 4-The LED flashes RED and GREEN continously,check if the filter is blocked

 **CAUTION**

	Do not expose to sunlight to avoid product deformation
	Do not use the dispenser violently, it will damage the product
	Remove the battery and pour out liquid when not used for a long time
	Please clean the product regularly
	Do not rinse with water, it will damage the product
	Do not drop or hit the product on purpose
	Do not use strong corrosive chemical solvents to clean the product, which will damage and deform the product surface
	Do not allow dust to enter the soap bottle <small>The pump may be blocked. If you find that the inside of the bottle is dirty, please replace the soap solution and clean the pump</small>
	Never dismantle, repair, modify, etc. without permission <small>Can cause product failure For repairs, please consult our customer service.</small>
	Do not pour corrosive chemicals, etc.
	Keep away from fire

FILTER DISASSEMBLY STEPS:



PRODUCT WARRANTY INSTRUCTIONS

The company ensures the products shipped from the factory meet the relevant safety standards and technical requirements, which can display all functions under normal use and maintenance.

Within one year from the date of purchase, it is confirmed by our maintenance personnel that the failure is damaged due to manufacturing processes or materials, then the warranty is free.

For one of the following reasons, you can not enjoy the free warranty service terms of our company during the warranty period:

- ◆ Product damage caused by incorrect use
- ◆ Product damage caused by incorrect installation
- ◆ Product damage caused by customer's unauthorized modification
- ◆ Natural disasters and man-made damage

The company only performs product after-sales maintenance services with valid tickets and corresponding product warranty cards.

Do not expose the product to moisture or water

Once the product is sold, do not accept any returns unelsss it is quality problem

CERTIFICATE OF CONFORMITY

TEST RESULTS _____

PRODUCTION DATE _____

INSPECTION DATE _____

INSPECTORS _____

NO _____

WARRANTY CARD

PURCHASE DATE _____

PURCHASE STORE _____

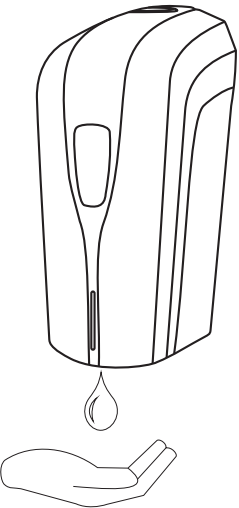
TICKET NUMBER _____

ADDRESS _____

PHONE _____

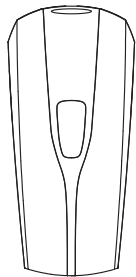
USER MANUAL

Automatic Soap Dispenser



Please read user manual carefully before using

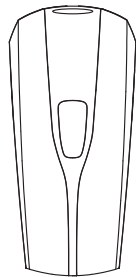
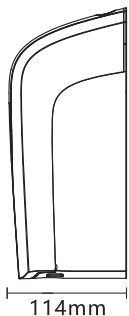
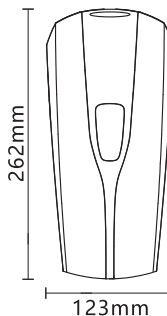
Thank you for choosing the dispenser. May it bring convenience to your future life



Model:: DX1802
Dispensing: Gel/liquid



PRODUCT SIZE:



Model: DX1803
Dispensing: Spray



SPECIFICATIONS:

If you choose the dispenser of gel/liquid (YK1008), please refer to the following instructions

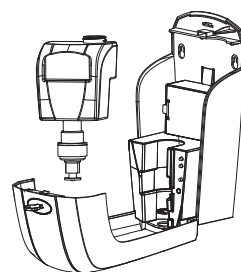
NAME:	Automatic liquid soap dispenser
MODEL:	DX1802
INDUCTION WAY:	infrared reflection
INDUCTION DISTANCE:	the shortest 3CM the longest 10 ± 2CM
MATERIAL:	ABS、PP
CAPACITY:	1000ml
REFILLABLE LIQUID:	milky liquid (such as: shampoo, shower gel, hand soap, etc.)
DISPENSING:	gel/liquid
DOSE:	💧:0.8ml 💧💧:1.6ml
BATTERY:	4 or 8 AA alkaline batteries
POWER ADAPTER:	Input voltage AC100~240V 50/60Hz Output voltage: DC6.0V 2A(Optional,it is not included by default)

If you choose the dispenser of spray (YK1808), please refer to the following instructions

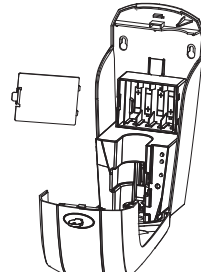
NAME:	Automatic hand disinfection dispenser
MODEL:	DX1803
INDUCTION WAY:	infrared reflection
INDUCTION DISTANCE:	the shortest 3CM the longest 10 ± 2CM
MATERIAL:	ABS、PP
CAPACITY:	1000ml
REFILLABLE LIQUID:	Special hand sanitizing liquid (Or medical disinfection alcohol, 75% alcohol content)
DISPENSING:	mist spray
DOSE:	💧:0.4ml 💧💧:0.8ml
BATTERY:	4 or 8 AA alkaline batteries
POWER ADAPTER:	Input voltage AC100~240V 50/60Hz Output voltage: DC6.0V 2A(Optional,it is not included by default)

BATTERY INSTALLATION STEPS:

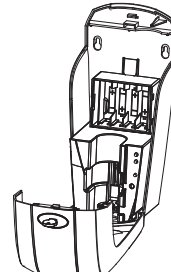
Remove the bottle, open battery compartment and insert 4 or 8 AA alkaline batteries



① Remove bottle

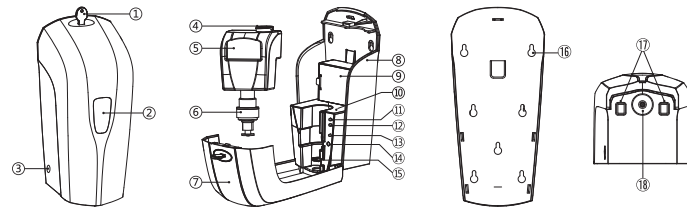


② Remove the battery compartment cover



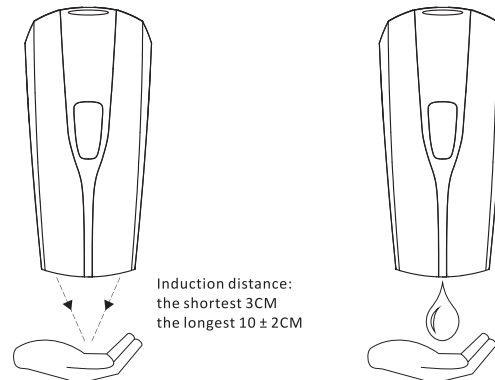
③ Insert batteries

COMPONENT DESCRIPTION:



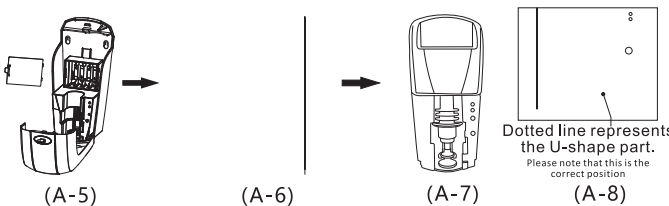
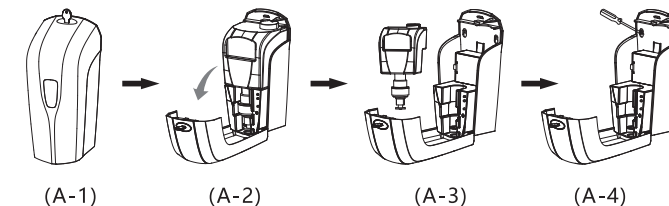
- | | | | | | | | | | |
|------------------|---------------|----------------|-----------------------|-----------------|-----------------|----------------|----------------------|-----------------|----------------|
| ① Key | ⑥ Pump | ⑪ Once button | ⑫ Twice button | ⑬ ON/OFF | ⑭ LED indicator | ⑮ U-shape part | ⑯ Screw hanging hole | ⑰ Sensor light | ⑱ Outlet |
| ② Visible window | ⑦ Front cover | ⑧ Bottom shell | ⑨ Battery compartment | ⑩ Internal unit | ⑪ Once button | ⑫ Twice button | ⑬ ON/OFF | ⑭ LED indicator | ⑮ U-shape part |
| ③ Adapter socket | ④ Bottle cap | ⑤ Bottle | | | | | | | |

USAGE EXAMPLE :



INSTALLATION NOTES:

When installing, please keep below space of dispenser at least 30CM. Choose a suitable place to install machine, do not let the dispenser get wet.



Insert the key into the corresponding hole of dispenser. (A-1)

pressing down on key hole and swinging cover down. (A-2)

Remove bottle. (A-3)

According to the screw hole position on the bottom shell, use pen to mark, fix screws and then hang dispenser. (A-4)

Open the battery compartment cover and insert 4 or 8 AA alkaline batteries correctly. (A-5)

Pour liquid into the bottle (Must remove bottle to add liquid). (A-6)

Put the bottle into the dispenser vertically and parallel. (A-7)

Pump head need to be locked in the correct position of U-shape part. (A-8)