

# PROFESSIONAL ASPIRATORS - HIGH VACUUM



28280-1

CE 0434  
EN ISO 10079-1  
Class I  
Type B



28244-6

1 l Autoclavable Jar

## ASPEED PROFESSIONAL SURGICAL ASPIRATORS

Piston-type continuous cycle electric aspirators give high performance and great durability. Equipped with a protective thermal cut-out relay. They require no maintenance or lubrication. A motor-protector cap totally prevents aspirated

liquids or secretions from reaching and damaging the vacuum pump. Ideal for clinical use. Made in Italy.

GIMA code	ASPEED ASPIRATORS	Power	Pump	Case
28244	Aspeed 15 l	230 V	single	metal
28245	Aspeed 22 l	230 V	double	metal
28246	Aspeed 22 l	110 V	double	metal
28280	Aspeed 2 15 l	230 V	single	plastic
28281	Aspeed 2 22 l	230 V	double	plastic

GIMA code	ACCESSORIES AND SPARES FOR ASPEED
28255	Hydrophobic 99% bacterial filter
28258	Autoclavable jar 1l with cover
28259	Disposable suction liner
25480	Silicone tube 6x12 mm - roll of 30 m
28254	Adaptor to connect catheter to silicone tube
28261	Adaptor kit to use jar 1l (28258) with ASPEED manufactured before 2007

- STANDARD ACCESSORIES**
- Autoclavable polycarbonate jar 1,000 cc with safety valve (overflow protection)
  - Disposable suction liner 1 l
  - 99% Antibacterial hydrophobic filter
  - Sterile disposable cannula
  - Sterile manual flow regulator
  - Set of atoxic sterilizable silicone tubes
  - Power Cable
  - User Manual GB, FR, IT, DE, ES

**TECHNICAL SPECIFICATIONS**

	ASPEED		ASPEED 2	
	28244	28245/6*	28280	28281
Operating voltage:	230 V-50 Hz		230 V - 50/60 Hz	
	110-60 Hz		other voltage on request	
Bottle capacity:	1 l	1 l	1 l	1 l
High vacuum:	low flow	low flow	low flow	high flow
Air flow:	15 l/min	22 l/min	15 l/min	22 l/min
Adjustable vacuum level:	0 ÷ -0.85 bar (0 ÷ -85 kPa)			
Weight:	3.5 kg	4.5 kg	2.5 kg	3.2 kg
Case material:	metal		plastic	
Noise level:	55 dBA	65 dBA	55 dBA	55 dBA

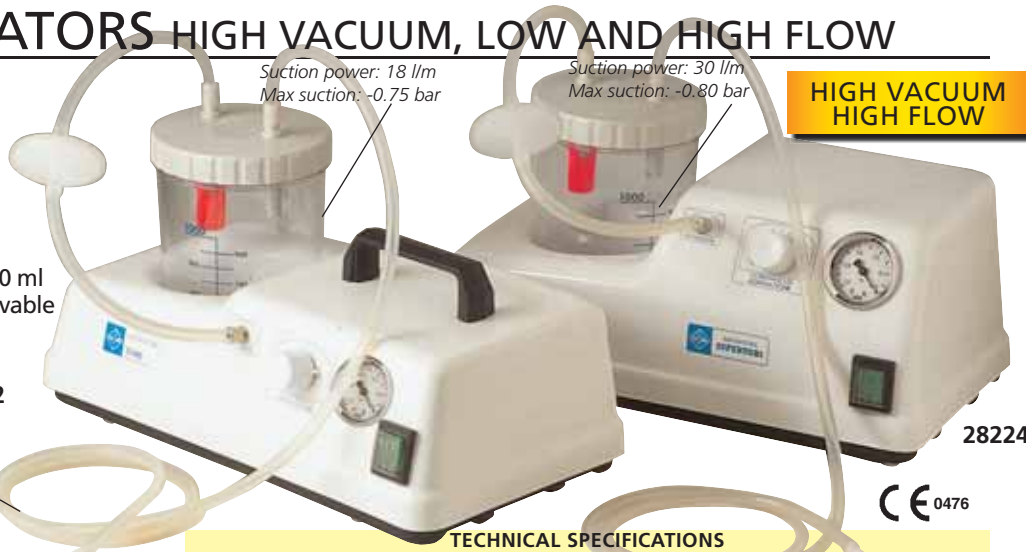


28258 Autoclavable Jar, h 19.2 cm Ø 10 cm top, 9.7 cm base  
28259 Disposable suction liner

# SUCTION ASPIRATORS HIGH VACUUM, LOW AND HIGH FLOW

- 28222 TOBI - suction aspirator 220-230 V - 50/60 Hz
- 28224 SUPER TOBI - suction aspirator 220-230 V - 50/60 Hz

Portable suction aspirators, ideal for tracheotomy and small surgery. Vacuum continuously adjustable with vacuum indicator. Have unbreakable 1,000 ml standard bottle (2,000 ml optional) autoclavable at 120°C with safety float control valve to prevent overflow. Silicone connection tube. ABS plastic case. Made in Italy



**HIGH VACUUM HIGH FLOW**

- Silicone tube 6x10 mm (see page 159)
- Adaptor for catheter (code 28252)

**STANDARD ACCESSORIES**

	Tobi	Super Tobi
Bottle 1,000 ml with cover	1	1
Antibacterial Filter	1	1
Suction catheter	1	1
Silicon Tube set	1	1
User manual GB, FR, IT, DE, ES	1	1

**TECHNICAL SPECIFICATIONS**

	28222 Tobi	28224 Super Tobi
Operating voltage:	220-230 V - 50/60 Hz	220-230 V - 50/60 Hz
Power consumption:	184 W	106 W
Bottle capacity:	1,000 ml	1,000 ml
Flow (air litres/min):	18 l/min	40 l/min
Max suction:	-0.75 bar (563mm/Hg)	-0.80 bar (600mm/Hg)
Working time: minutes	20 ON / 40 OFF	120 ON / 60 OFF
Size (cm):	37x22xh 21 cm	37x22xh 21 cm
Weight:	3.5 kg	5.25 kg
Norms:	IEC 601-1	IEC 601-1



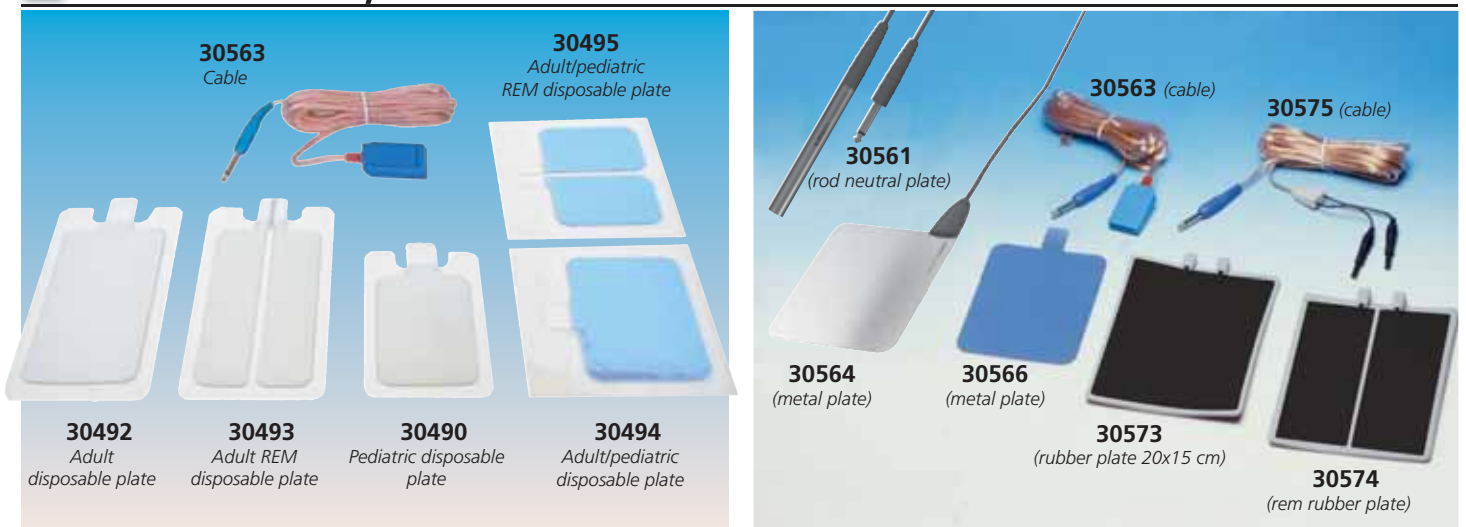
## BIPOLAR CABLES FOR MAJOR BRANDS

Quality highly flexible silicone bipolar cables. Autoclavable at 134°C for minimum 20 times. 3 m long (10").

Recommended ETO sterilization for max extended life. Suitable for most generators, with connector for European or US forceps.

<p>Connector to forceps</p> <p>30642</p> <p>• 30642 BIPOLAR CABLE ADAPTOR</p>	<p>Connector to forceps</p> <p>30632</p>	<p>Connector to forceps</p> <p>30618</p>	<p>Connector to forceps</p> <p>30640</p>	<p>Connector to forceps</p> <p>30637</p>	<p>Connector to forceps</p> <p>30643</p>	<p>Connector to forceps</p> <p>30618+ 30642</p>	<p>Connector to forceps</p> <p>30617</p>	<p>Connector to forceps</p> <p>30644</p>	<p>Connector to forceps</p> <p>30639</p>	<p>Connector to forceps</p> <p>30638</p>
	<p>GIMA Code</p> <p>30632</p> <p>30618</p> <p>30640</p> <p>30637</p> <p>30643</p> <p>30618+ 30642</p> <p>30617</p> <p>30644</p> <p>30639</p> <p>30638</p>	<p>Connector to forceps</p> <p>EU</p> <p>US</p>	<p>Connector to forceps</p> <p>EU</p> <p>US</p>	<p>Connector to forceps</p> <p>EU</p> <p>US</p>	<p>Connector to forceps</p> <p>EU</p> <p>US</p>	<p>Connector to forceps</p> <p>EU</p> <p>US</p>	<p>Connector to forceps</p> <p>EU</p> <p>US</p>	<p>Connector to forceps</p> <p>EU</p> <p>US</p>	<p>Connector to forceps</p> <p>EU</p> <p>US</p>	<p>Connector to forceps</p> <p>EU</p> <p>US</p>
<p>Compatibility brand/model</p> <p>GIMA: MB 240 MB 380</p> <p>VALLEY LAB, CONMED, CODMAN, OLYMPUS</p>	<p>GIMA: MB 120 F, MB 200 F, MB 200 D, MB 250, MB 300 D, MB 400 D</p> <p>LED: SURTRON 120, 200, 300, 400</p> <p>VALLEY LAB, EMC, DOLLEY</p>		<p>GIMA: MB 122, MB 160, MB 200, MB 202</p>		<p>GIMA: MB 80 D, MB 120 D, MB 160 D</p> <p>LED: SURTRON 80, 120, 160</p>		<p>MARTIN BERCHTOLD AESCULAP WOLF</p>	<p>ERBE SELECT DOWNS SIEMENS</p>		

## SINGLE USE, METAL AND RUBBER PLATES



- 30492 DISPOSABLE GROUND PADS WITH SOLID GEL - adult
- 30490 DISPOSABLE GROUND PADS WITH SOLID GEL - pediatric
- 30493 REM DISPOSABLE GROUND PADS WITH SOLID GEL - adult
- 30494 DISPOSABLE NON WOVEN GROUND PADS - adult/ped
- 30495 REM DISPOSABLE NON WOVEN GROUND PADS - adult/ped

- 30573 RUBBER PLATE 20x15 cm - without cable
- 30574 REM RUBBER PLATE 20x15 cm - without cable
- 30575 CABLE FOR RUBBER PLATES
- 30566 METAL PLATE - without cable
- 30563 CABLE FOR PLATES - 5 m
- 30559 CABLE FOR PLATES - 2.5 m
- 30564 SURGEON NEUTRAL PLATE 16x12 cm - with cable
- 30561 ROD NEUTRAL PLATE with cable

## 3M ELECTROSURGICAL GROUNDING PADS WITH SAFETY RING

- 30496 3M 9160 SPLIT GROUNDING PAD - box of 100
  - 30497 3M 9160F SPLIT GROUNDING PAD - box of 200 (40 pouches of 5 pieces)
  - 30498 3M 9165 SPLIT GROUNDING PAD - pre-recorded - box of 40
- The 3M 9160, and 9165 Universal Grounding Pads all have a conductor area of 15 square inches and come with the patented 3M Green Safety Ring technology which allows them to perform the same as grounding pads that are up to 33% larger in conductor area. Green Ring allows adult and pediatric use.

In addition, they have fluid resistant, non-woven backing which allows heat to pass through up to 25% faster than foam, and they have no minimum age or weight limit.



30498 (3M 9165)



30496, 30497 (3M 9160)



## SPIROTEL SPIROMETERS - BLUETOOTH OPTION

- 33471 SPIROTEL with WINSPIROPRO software
- 33472 SPIROTEL with Bluetooth and WINSPIROPRO software
- 33473 SpO<sub>2</sub> PROBE - adult - optional
- 33410 MOUTHPIECES int Ø 2,8 x ext Ø 3, h 6.5 cm



A pocket laboratory which integrates 4 devices in one:

- spirometer with touch screen display
- triaxial accelerometer with motion analysis for therapy monitoring
- intelligent 3D oximeter with on screen results (with 33473)
- e-diary for home care symptom control.

Compatible with Qualcomm Life 2 net Hub

### TECHNICAL SPECIFICATION

Flow sensor:	Bi-directional digital turbine
Flow range:	±16L/s - ±3% or 50 mL
Dynamic resistance:	<0.5 cm H <sub>2</sub> O/L/s
Measured parameters:	Reading on spirometer: FVC, FEV1, PEF, FEF 25/75 Reading on PC with Winspiro PRO: same parameters as Spirobank G
SpO <sub>2</sub> range:	0-100% ±2% (50-100% SpO <sub>2</sub> )
Pulse rate range:	20-254 BPM ±2BPM or 2%
Data transmission:	USB 2.0 or Bluetooth
Memory capacity:	Up to 10,000 tests - 300 hours oximetry (only with 33473)
Power supply:	Lithium-ion 3.7 V, 1100 mAh rechargeable, for 40 hours measurements

## DISPOSABLE AND RE-USABLE TURBINES FOR MIR SPIROMETERS

- 33507 DISPOSABLE TURBINE WITH INTEGRATED MOUTHPIECE - box of 60  
Single patient use. Low cost and high accuracy. Individually packed to guarantee maximum hygiene. Easy to replace, no calibration needed. Compatible with GIMA codes: 33509, 33511-14, 33518-22, 33527-29, 33530, 33532, 33534.
- 33526 RE-USABLE TURBINE - bayonet  
Easy to replace, no calibration needed. Compatible with GIMA codes: 33511-14, 33518, 33520-22, 33528-32, 33534.



## MOUTHPIECES FOR MOST SPIROMETER BRANDS

Paper mouthpieces (disposable) and plastic mouthpieces (re-usable for most brands of spirometers and peak flow. Paper mouthpieces are packed in individual transparent pouch.



GIMA PAPER MOUTHPIECES					
GIMA code	Sizes - cm Ø int x ext x h	Suitable for	Compatibility		Minimum order
			GIMA codes	Other brands	
33410	2.8x3x6.5	adult	33431, 33433, 33471-2, 33512-14, 33518-22, 33528-32, 33534	Micromedical Vitalograph, Mir Ferraris (Koko legend) Cardiette (Pneumos 300)	box of 500
33897					
33411	2.0x2.2x6	paediatric		Micromedical Vitalograph, Mir	box of 250
33412	Plastic adapter		33411	Mir	-
33506	2.6x2.8x6.5	adult	33480, 33484-7	Sibel	box of 100
33494	1.9x2.1x7	paediatric	33486, 33487	Sibel*	box of 100
33890	2.5x2.7x7	adult	-	Fukuda Sangjo, Thor	dispenser of 100
33892	2.8x3.05x7	adult	-	Cosmed (Pony model)	dispenser of 100
33898	2.8x3.05x7	adult	-	Cosmed (Pony model)	box of 500
33895	3.03x3.3	adult	-	Sensormedics, Microcard	box of 500
33899	2.42x2.6	adult	-	Sorin Lifewatch, Fukuda Denshi	box of 500
GIMA PLASTIC MOUTHPIECES					
33432	1.7x2.1x5 2.7x3x5	adult/ped	33431, 33433	Ferraris	-
33691		adult	33682-4, 6, 8	Thor	box of 10

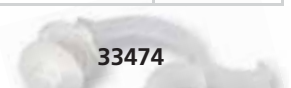
\*Gimaspir A/B need adapter 33495

## SPIROMETRY PAPERS

- 33492 MIR SPIROLAB PAPER - roll 112mm x 25m  
Suitable also for SIBEL DATOSPIR 120 B, C, D, DATOSPIR Touch and GIMASPIR 120 models B, C, D.
- 33893 COSMED PONY PAPER - roll 57 mm x 11 m - box of 5 rolls
- 33894 COSMED PONY FX PAPER - roll 112 mm x 13m - box of 25 rolls  
Compatible also with Fukuda Spirosift.
- 33250 THERMAL PAPER - roll 58 mm  
Suitable for SIBEL DATOSPIR 120 A and GIMASPIR 120-A.

## NOSECLIP

- 33474 NOSE CLIP



## BACTERIAL FILTER

- 33525 BACTERIAL FILTER - box of 50 for MIR, Medisoft spirometers
- 33557 SPIROGUARD BACTERIAL FILTER - box of 50

Compatibility of Spiroguard  
Erich Jaeger GmbH  
Ferraris Medical - P.K. Morgan  
Sensormedics  
Vitalograph

Masterlab and Masterscreen  
Autolink-Benchmark Transflo and USA Transfer System  
2200 - 2400 - 2450  
Wedge-Bellow-Alpha and Escort Spirometers

## BACTERIAL FILTER - MOUTHPIECE FOR MOST SPIROMETER BRANDS



**BACTERIAL FILTER - MOUTHPIECE**  
Disposable filter with anatomical shape to prevent bacterial and viral contamination. Easy to use, direct connection to spirometer one side, patient mouthpiece other side. Suitable for most of spirometers and devices. Class II A. Individually packed in transparent bag. Made in Italy.

BACTERIAL FILTERS - MOUTHPIECES - box of 100				
GIMA code	Size - cm Ø int x ext	Compatibility with		
		GIMA codes	Other brands	
33884	2.75x3	33341, 33433, 33471-2, 33509-14, 33518-22, 33528-32, 33534	Micromedical, Vitalograph, Mir, Ferraris (koko legend), Cardiette (Pneumos 300)	
33885	2.75x3.1	-	Cosmed	
33886	2.95x3.4	-	Customed, Jaeger	
33887	3.05x3.5	-	Sensormedics, BTL, Thor, Morgan, Chest, Microgard	
33888	3.4x3.6	-	Medical Graphics	
33889	2.5x2.7	-	Fukuda Sangjo	