

# STONE EXTRACTION BALLOONS

## ONE BALLOON, THREE DIAMETERS

MICRO-TECH's vast product range includes high-quality 3-lumen extraction balloons for reliable removal of small stones and sludge from the bile duct. The conical, atraumatic tip of the catheter makes for easy, precise positioning using the two x-ray markers. The cylindrical balloon itself is made of high-quality latex and can be expanded to three different diameters. A specially calibrated single-use

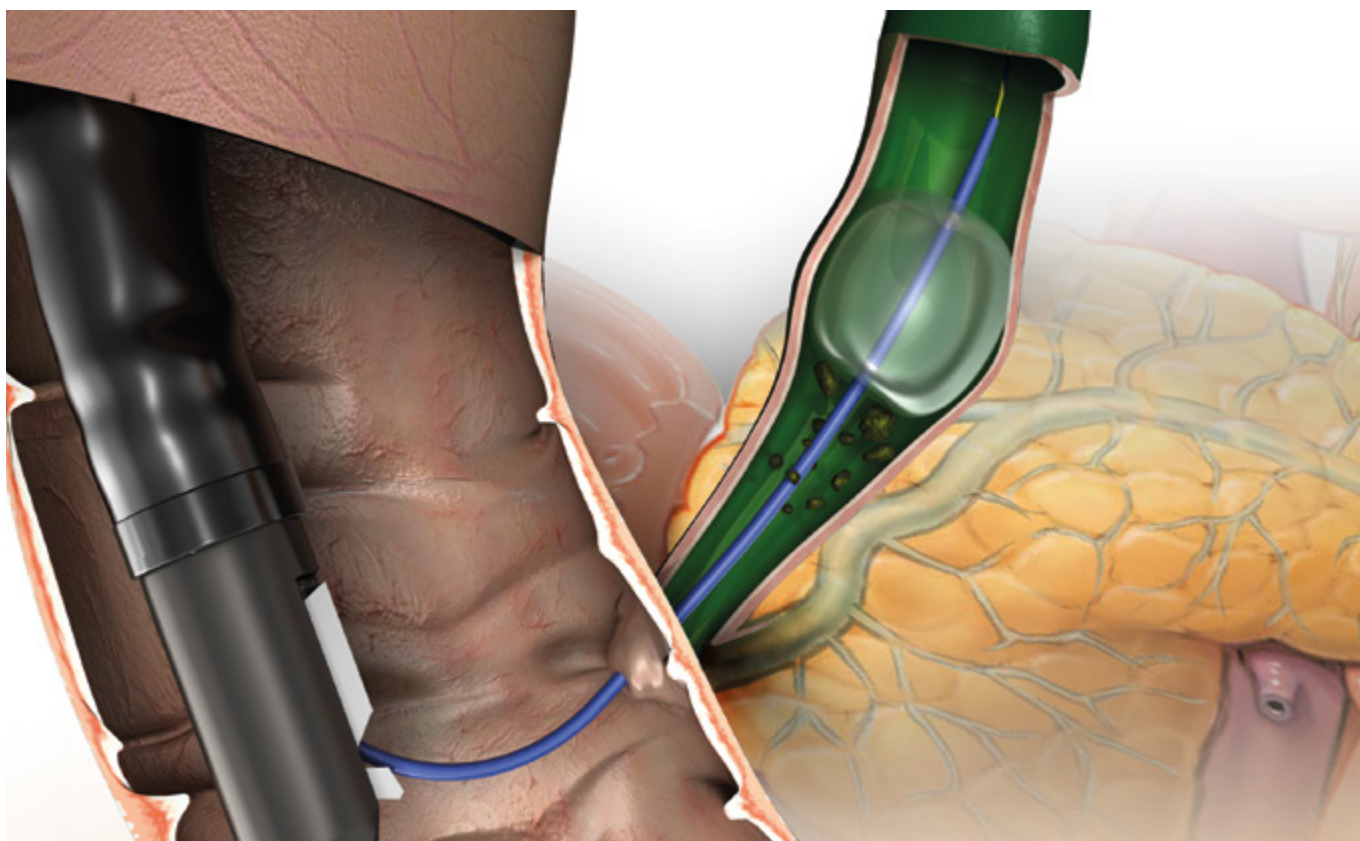
syringe is supplied for each balloon diameter. Following insufflation, the balloon surface lies flat against the bile duct wall, enabling efficient and complete cleaning of the bile duct. A separate lumen for a 0.035 inch guidewire and one for contrast media, provide for ease of handling and contrast injection.

### SPECIFIC CHARACTERISTICS

- 3-stage balloons
- One calibrated tip per diameter
- 3 lumens for insufflation, guidewire and contrast agent
- High X-ray visibility (radiopacity)



3-lumen stone extraction balloon from MICRO-TECH



## SPECIFICATIONS

| REF                              | Injection                       | Lumen | Catheter Ø Fr | Balloon Ø mm | Working length mm |
|----------------------------------|---------------------------------|-------|---------------|--------------|-------------------|
| <b>STONE EXTRACTION BALLOONS</b> |                                 |       |               |              |                   |
| SRB-T-9/12/15-20                 | Above (distal to the balloon)   | 3     | 7             | 9 / 12 / 15  | 2000              |
| SRB-T-12/15/18-20                | Above (distal to the balloon)   | 3     | 7             | 12 / 15 / 18 | 2000              |
| SRB-T-15/18/21-20                | Above (distal to the balloon)   | 3     | 7             | 15 / 18 / 21 | 2000              |
| SRB-T-9/12/15-20-B               | Below (proximal to the balloon) | 3     | 7             | 9 / 12 / 15  | 2000              |
| SRB-T-12/15/18-20-B              | Below (proximal to the balloon) | 3     | 7             | 12 / 15 / 18 | 2000              |
| SRB-T-15/18/21-20-B              | Below (proximal to the balloon) | 3     | 7             | 15 / 18 / 21 | 2000              |

### RECOMMENDED GUIDEWIRES

| REF                            | Ø inches | Total length mm | Tip length mm | Tip form | Set-up                       | Characteristic           |
|--------------------------------|----------|-----------------|---------------|----------|------------------------------|--------------------------|
| <b>HYDRO-SLIDE GUIDE WIRES</b> |          |                 |               |          |                              |                          |
| MTN-BM-63/45-A-S               | 0.025    | 4500            | 65            | straight | hydrophilic tip, blue-yellow | extra stiff $\pm$ 0.035" |
| MTN-BM-63/45-A-J-S             | 0.025    | 4500            | 65            | J-form   | hydrophilic tip, blue-yellow | extra stiff $\pm$ 0.035" |

Packaging unit: 1 piece



# DILATION BALLOONS

## SIMPLY EXPAND RELIABLY AND EFFECTIVELY

The dilation balloons from MICRO-TECH stand for maximum quality. MICRO-TECH produces all the dilation balloons itself – using state-of-the-art European and American production technology. Two x-ray markings indicate the exact working length of the balloon, thereby ensuring its

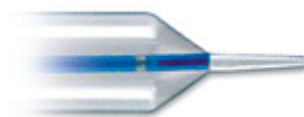
precise positioning. Under application of pressure, the balloon is rapidly filled to acquire its predefined expansion width. Furthermore, the high-pressure design ensures the balloon retains its shape over the entire working length, thereby allowing optimum dilation success.

### SPECIFIC CHARACTERISTICS

- Dimensionally stable high pressure design
- 2 X-ray markers on opposite ends to indicate the exact working length of the balloon
- Separate guide wire and insufflation lumens
- Conical shaped catheter tip
- Rapid expansion
- Constant dilation over the entire length
- Guide-wire compatible up to 0.035 inches



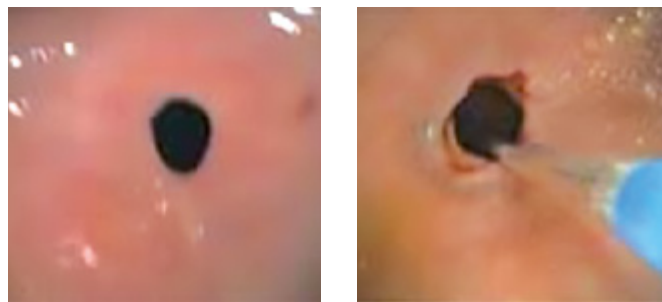
X-ray marking



Conical tip

## SUCCESSFUL IN PRACTICAL USE

Stenoses are effectively dilated using the MICRO-TECH dilation balloons. The balloon dilates the stenosis safely and gently and prepares the area to be treated in an optimum manner. The uniform distribution of pressure over the entire working length of the balloon and the outstanding dimensional stability during dilation guarantee excellent therapeutic success over the entire length of the stenosis.



Endoscopic control during dilation therapy

## SPECIFICATIONS

| REF                        | Balloon Ø mm | Balloon length mm | Catheter Ø Fr | Catheter length mm | Channel Ø mm | Application |
|----------------------------|--------------|-------------------|---------------|--------------------|--------------|-------------|
| <b>ACHALASIE-BALLOONS</b>  |              |                   |               |                    |              |             |
| BDC-26/80-7/10             | 26           | 80                | 7             | 1000               | –            | Achalasie   |
| BDC-30/80-7/10             | 30           | 80                | 7             | 1000               | –            | Achalasie   |
| BDC-34/80-7/10             | 34           | 80                | 7             | 1000               | –            | Achalasie   |
| <b>FIXED WIRE BALLOONS</b> |              |                   |               |                    |              |             |
| FWB-06/80-6/18-M           | 6-7-8        | 80                | 6             | 1800               | 2.8          | Oesophagus  |
| FWB-08/80-6/18-M           | 8-9-10       | 80                | 6             | 1800               | 2.8          | Oesophagus  |
| FWB-10/80-6/18-M           | 10-11-12     | 80                | 6             | 1800               | 2.8          | Oesophagus  |
| FWB-12/80-6/18-M           | 12-13.5-15   | 80                | 6             | 1800               | 2.8          | Oesophagus  |
| FWB-15/80-6/18-M           | 15-16.5-18   | 80                | 6             | 1800               | 2.8          | Oesophagus  |
| FWB-18/80-6/18-M           | 18-19-20     | 80                | 6             | 1800               | 2.8          | Oesophagus  |

Packaging unit: 1 piece / suitable for guide wires with 0.035"