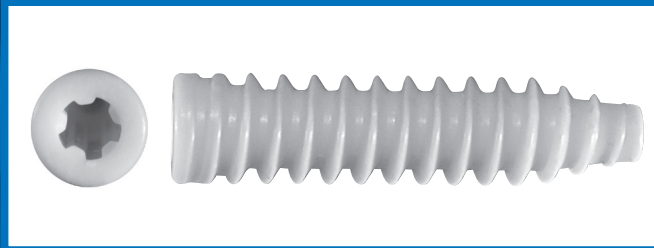



AMPLITUDE 

ECLIPSE® BCP
Interference screw
Absorbable
Osteoconducting

ECLIPSE® BCP: osteoconducting interference screw

Ergonomics



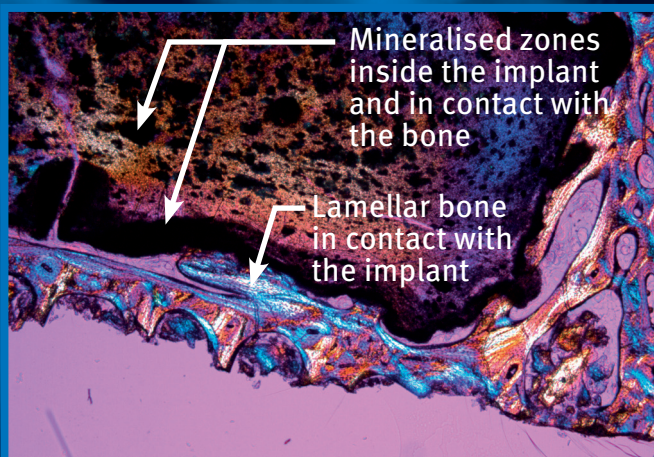
- Profiled tip
- Progressive Threading
- Atraumatic screw head
- Torx screw head
- Two lengths: 25 mm and 30 mm
- Four diameters: 7, 8, 9 and 10 mm

Osteoconduction

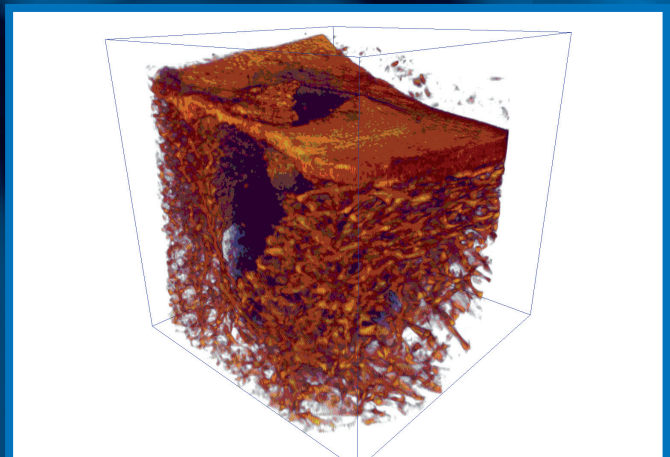
The ECLIPSE® BCP screw combines 75% amorphous PLDLA with 25% biphasic calcium phosphate (80 % TCP/20% HA).

- BCP has been used for 20 years as an osseous substitute for its osteoconducting properties.
- The combination of HA/TCP generates an interface composed of biological apatite which more effectively promotes the proliferation of osteoblasts than TCP or HA alone.
- The combination of BCP with an amorphous lactic acid copolymer makes the time for bone resorption and remodeling compatible.

Two histological studies in goats and rabbits have shown good quality bone regrowth (lamellar bone) in contact with implants composed of PLDLA BCP.



- Histology image at 18 months (polarised light)



- Quality of bone regrowth at 12 months. 3D reconstruction

ACCESSORY: fixation, sighting

Comfortable installation



- Foam preformer



- Torx screw driver
- Optimised torque

Accessories adapted to each technique



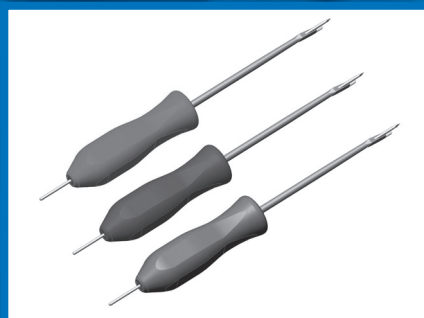
- Femoral sighter OUT-IN:
- Intra-articular clasp for the posterior ridge
 - Monoblock and rigid
 - Mono and double beam (anteromedial tunnel)



- Femoral sighter OUT-IN AM:
- Intra-articular clasp for the posterior ridge
 - Directional
 - Mono and double beam (anteromedial tunnel)



- Posterolateral sighter:
- Double-beam
 - Intra-articular clasp of the anteromedial tunnel
 - 4 available offsets: +/- 1 and +/- 2 mm



- Femoral sighter IN-OUT:
- Offset 5, 6, and 7 mm



- Directional tibial sighter:
- Angular sighter adjustment
 - Pin receptor cup

ECLIPSE® BCP: implants



Manufacturer: Biomatlante

ECLIPSE absorbable interference screw® BCP Ø 7 LG 25 mm	1-0401072
ECLIPSE absorbable interference screw® BCP Ø 7 LG 30 mm	1-0401073
ECLIPSE absorbable interference screw® BCP Ø 8 LG 25 mm	1-0401082
ECLIPSE absorbable interference screw® BCP Ø 8 LG 30 mm	1-0401083
ECLIPSE absorbable interference screw® BCP Ø 9 LG 25 mm	1-0401092
ECLIPSE absorbable interference screw® BCP Ø 9 LG 30 mm	1-0401093
ECLIPSE absorbable interference screw® BCP Ø 10 LG 30 mm	1-0401013

ECLIPSE® : instrumentation



Double-bladed scalpel, 10 mm spacing	2-0402810	Cannulated reamer Ø 7	2320-A
Double-bladed scalpel, 11 mm spacing	2-0402811	Cannulated reamer Ø 8	2321-A
Double-bladed scalpel, 12 mm spacing	2-0402812	Cannulated reamer Ø 9	2322-A
Calibrator	2-0401800	Cannulated reamer Ø 10	2323-A
Cannulated drill Ø 6	2-0402906	Cannulated reamer Ø 11	2324-A
Cannulated drill Ø 7	2-0402907	Femoral sighter IN-OUT, 5 mm offset	1046-A
Cannulated drill Ø 8	2-0402908	Femoral sighter IN-OUT, 6 mm offset	1047-A
Cannulated drill Ø 9	2-0402909	Femoral sighter IN-OUT 7 mm offset	1048-A
Cannulated drill Ø 10	2-0402910		
Cannulated drill Ø 11	2-0402911		
Tunnel plug Size 2	2-0402702		
Foam preformer 7/8 mm	2-0404400		
Foam preformer 9/10 mm	2-0404500		
ECLIPSE Screwdriver® BCP	2-0404300		
Pin - Ø 2.4 mm - LG 300 mm	3.0224.300		
Screw guide pin	2-04047		
Nitinol guide pin for screw	2-04046		
Wire guide	J80200		
Sliding sighter	2-0402000		
Tibial slide	2-0402100		
Femoral sighter OUT IN	2-0401900		
Universal sighting tube	2-0402300		
Open Stripper	5804-A		
Femoral slide PL, Left	2-0402201		
Femoral slide PL, Right	2-0402202		
Sighting tube PL, Offset +1	2-0402411		
Sighting tube, PL Offset +2	2-0402412		
Tunnel plug Size 1	2-0402701		
Eyelet pin Ø 2.4 mm - LG 350 mm	33.4524.350		

Distributed by:



Reference: DC.GB.045/1.0