



中国认可
国际互认
检测
TESTING
CNAS L11010



TEST REPORT

Report No: ST20240429008-R1

Sample Name: Lighting Chain (LED) for Indoor and Outdoor Use

CHANGDE (GUANGDONG) INTERNATIONAL

Authorized By: TRADING CO., LTD

Test Type: Commissioned Test

Report Date: May 08,2024



Approved By:

STAR-TECH (Shenzhen) Co., Ltd.

Address: Zone A Of 12/F., Factory No.10, Shuotai Road, Second Industrial Zone Of Loucun, Gongming Street, Guangming New District, Shenzhen, Guangdong.

Company Tel:0755-33594665

Fax:0086-755-33594665

Email:shenzhenstar@126.com

Website:www.startesting.cn



Scan the QR
code to follow



Test Report

Report No: ST20240429008-R1

Page 1 of 25

Client Name : CHANGDE (GUANGDONG) INTERNATIONAL TRADING CO., LTD

Client Address : Room 403-1, Floor 4, Building 17, No.1 jingtang Road, Tangjiawan Town, High-Tech Zone, Zhuhai City, Guangdong Province, China

Manufacture Name : Beatineon Lighting Co., Ltd.

Manufacture Address : No.108, Wimin Road, Dongsheng Town, ZhongshanCity, Guangdong, China

Sample Name : Lighting Chain (LED) for Indoor and Outdoor Use

Specification/Model : LED-BSR-XX-YYM-230V series, LED-BCR-XX-YY*ZM-230V series, LED-BGR-XX-YY*ZM-230Vseries,LED-BPR-AABB-YY*ZM-230V series,PR1526-120L-2W-230V-**m-**,PR1526-72L-4W-230V-**m-RGB;PR 1018-120L-2W-230V-**m-**,PR0816-120L-2W-230V-**m-**,PD0816-120L-2W-230V-**m-**,PT1221-120L-2W-230V-**m-**,PC14-140L-2W-230V-**m-**,LED-BN-60/120L-230V-**m-**,LED-BN-2W-230V-**m-**,LED-BN-3W-230V-**m-**,LED-BXR-XX-YYM-230Vseries;BN-EXT-*M-** ;BN-*T-**,BN-PCR-*M-**,BN-Y-**,PC15-140L-2W-230V-xxm-xx;PC18-120L-2W-230V-xxm-xx ;PR1526-120L-2W-230V-xxm-xx

Sample Number : ST0429008

Sample Received Date : April 29,2024

Test Period : April 29, 2024~May 08,2024

Conclusion : According to the client requirements,the sample(s) were tested for lead (Pb), cadmium (Cd), mercury (Hg), hexavalent chromium (Cr⁶⁺), polybrominated biphenyls (PBBs), polybrominated diphenyl ethers (PBDEs), di-isobutyl phthalate (DIBP) , di-(2-ethylhexyl) phthalate (DEHP), benzyl butyl phthalate (BBP) and di-n-butyl phthalate (DBP) in accordance with Directive 2011/65/EU(RoHS) and its amendment Directive (EU)2015/863.
The result is as specified.

Prepared By : Phoebe

Checked By : Huang Yike



Test Report

Report No: ST20240429008-R1

Page 2 of 25

1. Sample Photos

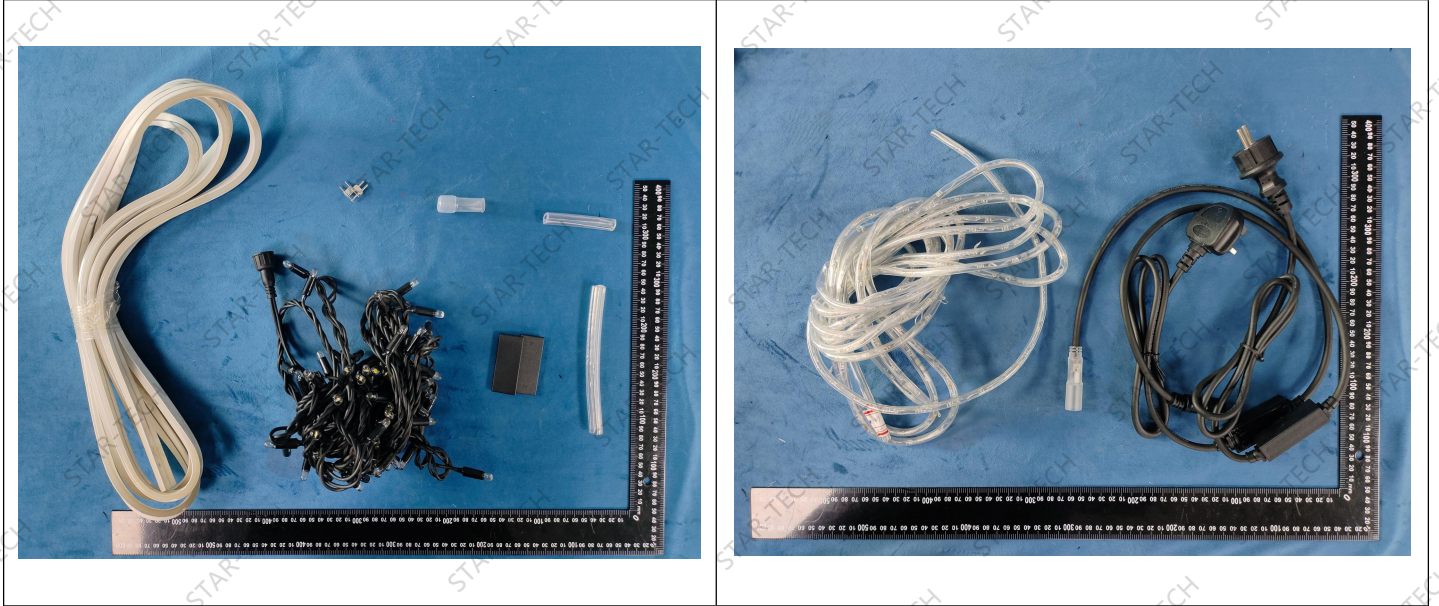


Figure 1. Sample photos

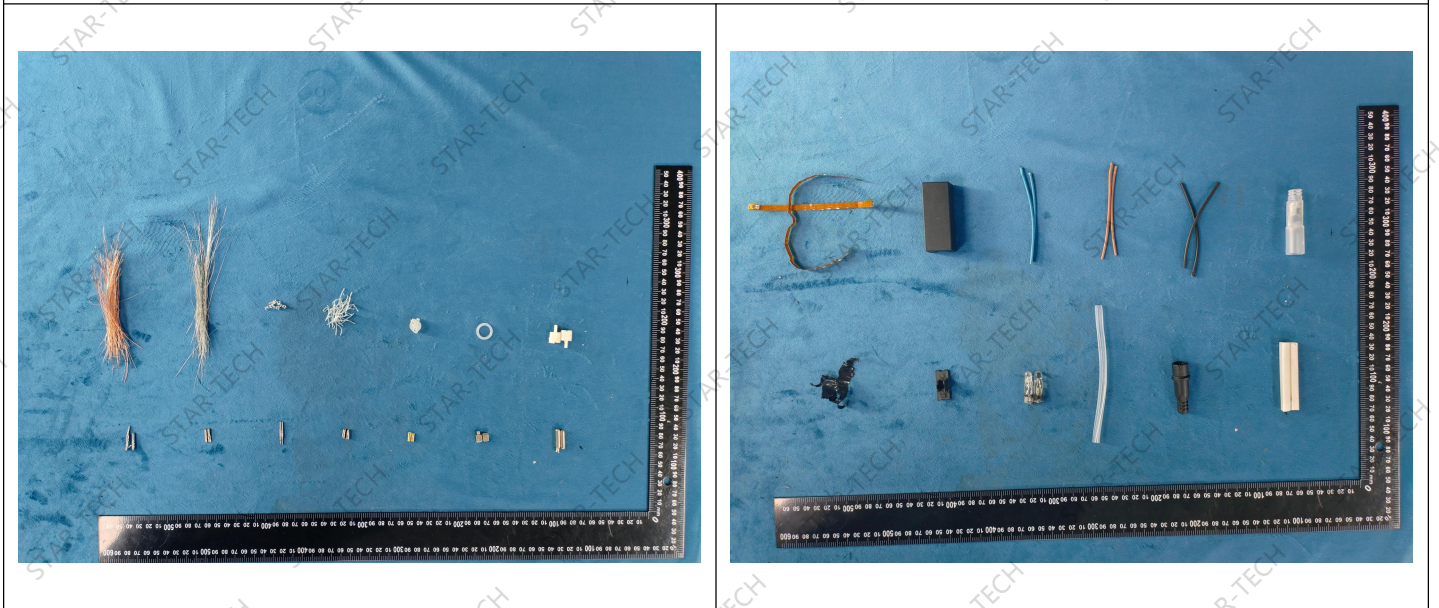


Figure 2. test position photos



Test Report



Figure 2. 1. test position photos

2. Test Items

Test items

RoHS 10 items (Pb、Cd、Hg、Cr⁶⁺、PBBS、PBDEs、DIBP、DBP、BBP、DEHP)



Test Report

Report No: ST20240429008-R1

Page 4 of 25

3. Test Method & Equipment

a. XRF Scan Test

Test method : IEC 62321-3-1:2013

Element Test	Polymer	Metal	Composite material
Pb	$BL \leq (700-3\sigma) < X$ $< (1300+3\sigma) \leq OL$	$BL \leq (700-3\sigma) < X$ $< (1300+3\sigma) \leq OL$	$BL \leq (300-3\sigma) < X$ $< (1300+3\sigma) \leq OL$
Cd	$BL \leq (70-3\sigma) < X$ $< (130+3\sigma) \leq OL$	$BL \leq (70-3\sigma) < X$ $< (130+3\sigma) \leq OL$	$LOD < X <$ $(130+3\sigma) \leq OL$
Hg	$BL \leq (700-3\sigma) < X$ $< (1300+3\sigma) \leq OL$	$BL \leq (700-3\sigma) < X$ $< (1300+3\sigma) \leq OL$	$BL \leq (300-3\sigma) < X$ $< (1300+3\sigma) \leq OL$
Cr	$BL \leq (700-3\sigma) < X$	$BL \leq (700-3\sigma) < X$	$BL \leq (300-3\sigma) < X$
Br	$BL \leq (300-3\sigma) < X$	/	$BL \leq (230-3\sigma) < X$

Explanation :

- 1、BL — Lower than XRF Scan Test
- 2、OL — Higher than XRF Scan Test , Further chemical tests are needed to confirm this
- 3、X — Samples within the XRF scan test value range require further chemical confirmation
- 4、 3σ — It shows the repeatability of the analytical instrument



Test Report

Report No: ST20240429008-R1

Page 5 of 25

b. Chemical test

Test Items	Test Method	Test Equipment	MDL	Limit
Pb	IEC 62321-5:2013	ICP-OES	10mg/kg	1000 mg/kg
Cd	IEC 62321-5:2013	ICP-OES	10mg/kg	100 mg/kg
Hg	IEC 62321-4:2013/AMD 1:2017	ICP-OES	10mg/kg	1000 mg/kg
Cr ⁶⁺	IEC 62321-7-1:2015	UV-Vis	0.10 µg/cm ²	-
	IEC 62321-7-2:2017	UV-Vis	10 mg/kg	1000 mg/kg
PBBs	IEC 62321-6:2015	GC-MS	-	1000 mg/kg
PBDEs	IEC 62321-6:2015	GC-MS	-	1000 mg/kg
DIBP	IEC 62321-8:2017	GC-MS	30 mg/kg	1000 mg/kg
DBP	IEC 62321-8:2017	GC-MS	30 mg/kg	1000 mg/kg
BBP	IEC 62321-8:2017	GC-MS	30 mg/kg	1000 mg/kg
DEHP	IEC 62321-8:2017	GC-MS	30 mg/kg	1000 mg/kg

4. Test Process

In appendix



Test Report

Report No: ST20240429008-R1

Page 6 of 25

5. Test Results

Sample description	Items	Unite	XRF Scan results	Test results	Result
1* Silver metal	Pb	mg/kg	OL	13827.5*	Comply directive requirements
	Cd	mg/kg	BL	N.D.	
	Hg	mg/kg	BL	N.D.	
	Cr ⁶⁺	μg/cm ²	BL	N.D.	
2 Silver metal	Pb	mg/kg	BL	N.D.	Comply directive requirements
	Cd	mg/kg	BL	N.D.	
	Hg	mg/kg	BL	N.D.	
	Cr ⁶⁺	μg/cm ²	BL	N.D.	
3* Silver metal	Pb	mg/kg	OL	14104.0*	Comply directive requirements
	Cd	mg/kg	BL	N.D.	
	Hg	mg/kg	BL	N.D.	
	Cr ⁶⁺	μg/cm ²	BL	N.D.	
4 Silver metal	Pb	mg/kg	BL	N.D.	Comply directive requirements
	Cd	mg/kg	BL	N.D.	
	Hg	mg/kg	BL	N.D.	
	Cr ⁶⁺	μg/cm ²	BL	N.D.	
5* Golden metal	Pb	mg/kg	OL	3906.1*	Comply directive requirements
	Cd	mg/kg	BL	N.D.	
	Hg	mg/kg	BL	N.D.	
	Cr ⁶⁺	μg/cm ²	BL	N.D.	



Test Report

Report No.: ST20240429008-R1

Page 7 of 25

Sample description	Items	Unite	XRF Scan results	Test results	Result
6* Silver metal	Pb	mg/kg	OL	10141.0*	Comply directive requirements
	Cd	mg/kg	BL	N.D.	
	Hg	mg/kg	BL	N.D.	
	Cr ⁶⁺	μg/cm ²	BL	N.D.	
7 Silver metal	Pb	mg/kg	BL	N.D.	Comply directive requirements
	Cd	mg/kg	BL	N.D.	
	Hg	mg/kg	BL	N.D.	
	Cr ⁶⁺	μg/cm ²	BL	N.D.	
8 Gold copper wire	Pb	mg/kg	BL	N.D.	Comply directive requirements
	Cd	mg/kg	BL	N.D.	
	Hg	mg/kg	BL	N.D.	
	Cr ⁶⁺	μg/cm ²	BL	N.D.	
9 Silver copper wire	Pb	mg/kg	BL	N.D.	Comply directive requirements
	Cd	mg/kg	BL	N.D.	
	Hg	mg/kg	BL	N.D.	
	Cr ⁶⁺	μg/cm ²	BL	N.D.	
10 Transparent plastic	Pb	mg/kg	BL	N.D.	Comply directive requirements
	Cd	mg/kg	BL	N.D.	
	Hg	mg/kg	BL	N.D.	
	Cr ⁶⁺	mg/kg	BL	N.D.	
	PBBs	mg/kg	BL	N.D.	



Test Report

Report No.: ST20240429008-R1

Page 8 of 25

Sample description	Items	Unite	XRF Scan results	Test results	Result
	PBDEs	mg/kg	BL	N.D.	
	DIBP	mg/kg	/	N.D.	
	DBP	mg/kg	/	N.D.	
	BBP	mg/kg	/	N.D.	
	DEHP	mg/kg	/	N.D.	
11 Transparent rubber	Pb	mg/kg	BL	N.D.	Comply directive requirements
	Cd	mg/kg	BL	N.D.	
	Hg	mg/kg	BL	N.D.	
	Cr ⁶⁺	mg/kg	BL	N.D.	
	PBBs	mg/kg	BL	N.D.	
	PBDEs	mg/kg	BL	N.D.	
	DIBP	mg/kg	/	N.D.	
	DBP	mg/kg	/	N.D.	
	BBP	mg/kg	/	N.D.	
	DEHP	mg/kg	/	N.D.	
12 White plastic	Pb	mg/kg	BL	N.D.	Comply directive requirements
	Cd	mg/kg	BL	N.D.	
	Hg	mg/kg	BL	N.D.	
	Cr ⁶⁺	mg/kg	BL	N.D.	



Test Report

Report No: ST20240429008-R1

Page 9 of 25

Sample description	Items	Unite	XRF Scan results	Test results	Result
	PBBs	mg/kg	BL	N.D.	
	PBDEs	mg/kg	BL	N.D.	
	DIBP	mg/kg	/	N.D.	
	DBP	mg/kg	/	N.D.	
	BBP	mg/kg	/	N.D.	
	DEHP	mg/kg	/	N.D.	
13 White rubber	Pb	mg/kg	BL	N.D.	Comply directive requirements
	Cd	mg/kg	BL	N.D.	
	Hg	mg/kg	BL	N.D.	
	Cr ⁶⁺	mg/kg	BL	N.D.	
	PBBs	mg/kg	BL	N.D.	
	PBDEs	mg/kg	BL	N.D.	
	DIBP	mg/kg	/	N.D.	
	DBP	mg/kg	/	N.D.	
	BBP	mg/kg	/	N.D.	
	DEHP	mg/kg	/	N.D.	
14 White plastic	Pb	mg/kg	BL	N.D.	Comply directive requirements
	Cd	mg/kg	BL	N.D.	
	Hg	mg/kg	BL	N.D.	



Test Report

Report No: ST20240429008-R1

Page 10 of 25

Sample description	Items	Unite	XRF Scan results	Test results	Result
	Cr ⁶⁺	mg/kg	BL	N.D.	
	PBBs	mg/kg	BL	N.D.	
	PBDEs	mg/kg	BL	N.D.	
	DIBP	mg/kg	/	N.D.	
	DBP	mg/kg	/	N.D.	
	BBP	mg/kg	/	N.D.	
	DEHP	mg/kg	/	N.D.	
15 Black plastic	Pb	mg/kg	BL	N.D.	Comply directive requirements
	Cd	mg/kg	BL	N.D.	
	Hg	mg/kg	BL	N.D.	
	Cr ⁶⁺	mg/kg	BL	N.D.	
	PBBs	mg/kg	BL	N.D.	
	PBDEs	mg/kg	BL	N.D.	
	DIBP	mg/kg	/	N.D.	
	DBP	mg/kg	/	N.D.	
	BBP	mg/kg	/	N.D.	
	DEHP	mg/kg	/	N.D.	
16 Black plastic	Pb	mg/kg	BL	N.D.	Comply directive requirements



Test Report

Report No: ST20240429008-R1

Page 11 of 25

Sample description	Items	Unite	XRF Scan results	Test results	Result
	Cd	mg/kg	BL	N.D.	
	Hg	mg/kg	BL	N.D.	
	Cr ⁶⁺	mg/kg	BL	N.D.	
	PBBs	mg/kg	X	N.D.	
	PBDEs	mg/kg	X	N.D.	
	DIBP	mg/kg	/	N.D.	
	DBP	mg/kg	/	N.D.	
	BBP	mg/kg	/	N.D.	
	DEHP	mg/kg	/	N.D.	
17 Transparent plastic	Pb	mg/kg	BL	N.D.	Comply directive requirements
	Cd	mg/kg	BL	N.D.	
	Hg	mg/kg	BL	N.D.	
	Cr ⁶⁺	mg/kg	BL	N.D.	
	PBBs	mg/kg	BL	N.D.	
	PBDEs	mg/kg	BL	N.D.	
	DIBP	mg/kg	/	N.D.	
	DBP	mg/kg	/	N.D.	
	BBP	mg/kg	/	N.D.	
DEHP	mg/kg	/	500		



Test Report

Report No: ST20240429008-R1

Page 12 of 25

Sample description	Items	Unite	XRF Scan results	Test results	Result
18 Transparent rubber	Pb	mg/kg	BL	N.D.	Comply directive requirements
	Cd	mg/kg	BL	N.D.	
	Hg	mg/kg	BL	N.D.	
	Cr ⁶⁺	mg/kg	BL	N.D.	
	PBBs	mg/kg	BL	N.D.	
	PBDEs	mg/kg	BL	N.D.	
	DIBP	mg/kg	/	N.D.	
	DBP	mg/kg	/	N.D.	
	BBP	mg/kg	/	N.D.	
	DEHP	mg/kg	/	N.D.	
19 Black rubber	Pb	mg/kg	BL	N.D.	Comply directive requirements
	Cd	mg/kg	BL	N.D.	
	Hg	mg/kg	BL	N.D.	
	Cr ⁶⁺	mg/kg	BL	N.D.	
	PBBs	mg/kg	BL	N.D.	
	PBDEs	mg/kg	BL	N.D.	
	DIBP	mg/kg	/	N.D.	
	DBP	mg/kg	/	N.D.	
	BBP	mg/kg	/	N.D.	



Test Report

Report No: ST20240429008-R1

Page 13 of 25

Sample description	Items	Unite	XRF Scan results	Test results	Result
	DEHP	mg/kg	/	N.D.	
20 White rubber	Pb	mg/kg	BL	N.D.	Comply directive requirements
	Cd	mg/kg	BL	N.D.	
	Hg	mg/kg	BL	N.D.	
	Cr ⁶⁺	mg/kg	BL	N.D.	
	PBBs	mg/kg	BL	N.D.	
	PBDEs	mg/kg	BL	N.D.	
	DIBP	mg/kg	/	N.D.	
	DBP	mg/kg	/	N.D.	
	BBP	mg/kg	/	N.D.	
	DEHP	mg/kg	/	N.D.	
21 Brown plastic	Pb	mg/kg	BL	N.D.	Comply directive requirements
	Cd	mg/kg	BL	N.D.	
	Hg	mg/kg	BL	N.D.	
	Cr ⁶⁺	mg/kg	BL	N.D.	
	PBBs	mg/kg	BL	N.D.	
	PBDEs	mg/kg	BL	N.D.	
	DIBP	mg/kg	/	N.D.	
	DBP	mg/kg	/	386	



Test Report

Report No: ST20240429008-R1

Page 14 of 25

Sample description	Items	Unite	XRF Scan results	Test results	Result
	BBP	mg/kg	/	N.D.	
	DEHP	mg/kg	/	498	
22 Black plastic	Pb	mg/kg	BL	N.D.	Comply directive requirements
	Cd	mg/kg	BL	N.D.	
	Hg	mg/kg	BL	N.D.	
	Cr ⁶⁺	mg/kg	BL	N.D.	
	PBBs	mg/kg	X	N.D.	
	PBDEs	mg/kg	X	N.D.	
	DIBP	mg/kg	/	N.D.	
	DBP	mg/kg	/	N.D.	
	BBP	mg/kg	/	N.D.	
	DEHP	mg/kg	/	N.D.	
23 Blue leather	Pb	mg/kg	BL	N.D.	Comply directive requirements
	Cd	mg/kg	BL	N.D.	
	Hg	mg/kg	BL	N.D.	
	Cr ⁶⁺	mg/kg	BL	N.D.	
	PBBs	mg/kg	BL	N.D.	
	PBDEs	mg/kg	BL	N.D.	
	DIBP	mg/kg	/	N.D.	



Test Report

Report No: ST20240429008-R1

Page 15 of 25

Sample description	Items	Unite	XRF Scan results	Test results	Result
	DBP	mg/kg	/	76	
	BBP	mg/kg	/	N.D.	
	DEHP	mg/kg	/	694	
24 Brown leather	Pb	mg/kg	BL	N.D.	Comply directive requirements
	Cd	mg/kg	BL	N.D.	
	Hg	mg/kg	BL	N.D.	
	Cr ⁶⁺	mg/kg	BL	N.D.	
	PBBs	mg/kg	BL	N.D.	
	PBDEs	mg/kg	BL	N.D.	
	DIBP	mg/kg	/	N.D.	
	DBP	mg/kg	/	N.D.	
	BBP	mg/kg	/	N.D.	
	DEHP	mg/kg	/	301	
25 Black leather	Pb	mg/kg	BL	N.D.	Comply directive requirements
	Cd	mg/kg	BL	N.D.	
	Hg	mg/kg	BL	N.D.	
	Cr ⁶⁺	mg/kg	BL	N.D.	
	PBBs	mg/kg	BL	N.D.	
	PBDEs	mg/kg	BL	N.D.	



Test Report

Report No: ST20240429008-R1

Page 16 of 25

Sample description	Items	Unite	XRF Scan results	Test results	Result
	DIBP	mg/kg	/	N.D.	
	DBP	mg/kg	/	273	
	BBP	mg/kg	/	N.D.	
	DEHP	mg/kg	/	298	
26 Transparent rubber	Pb	mg/kg	BL	N.D.	Comply directive requirements
	Cd	mg/kg	BL	N.D.	
	Hg	mg/kg	BL	N.D.	
	Cr ⁶⁺	mg/kg	BL	N.D.	
	PBBs	mg/kg	BL	N.D.	
	PBDEs	mg/kg	BL	N.D.	
	DIBP	mg/kg	/	N.D.	
	DBP	mg/kg	/	N.D.	
	BBP	mg/kg	/	N.D.	
	DEHP	mg/kg	/	N.D.	
27 Black leather	Pb	mg/kg	BL	N.D.	Comply directive requirements
	Cd	mg/kg	BL	N.D.	
	Hg	mg/kg	BL	N.D.	
	Cr ⁶⁺	mg/kg	BL	N.D.	
	PBBs	mg/kg	BL	N.D.	



Test Report

Report No: ST20240429008-R1

Page 17 of 25

Sample description	Items	Unite	XRF Scan results	Test results	Result
	PBDEs	mg/kg	BL	N.D.	
	DIBP	mg/kg	/	N.D.	
	DBP	mg/kg	/	N.D.	
	BBP	mg/kg	/	N.D.	
	DEHP	mg/kg	/	N.D.	
28 Black plastic	Pb	mg/kg	BL	N.D.	Comply directive requirements
	Cd	mg/kg	BL	N.D.	
	Hg	mg/kg	BL	N.D.	
	Cr ⁶⁺	mg/kg	BL	N.D.	
	PBBs	mg/kg	BL	N.D.	
	PBDEs	mg/kg	BL	N.D.	
	DIBP	mg/kg	/	N.D.	
	DBP	mg/kg	/	N.D.	
	BBP	mg/kg	/	N.D.	
DEHP	mg/kg	/	697		
29 Black leather	Pb	mg/kg	BL	N.D.	Comply directive requirements
	Cd	mg/kg	BL	N.D.	
	Hg	mg/kg	BL	N.D.	
	Cr ⁶⁺	mg/kg	BL	N.D.	



Test Report

Report No: ST20240429008-R1

Page 18 of 25

Sample description	Items	Unite	XRF Scan results	Test results	Result
	PBBs	mg/kg	BL	N.D.	
	PBDEs	mg/kg	BL	N.D.	
	DIBP	mg/kg	/	N.D.	
	DBP	mg/kg	/	N.D.	
	BBP	mg/kg	/	N.D.	
	DEHP	mg/kg	/	N.D.	
30 Black plastic	Pb	mg/kg	BL	N.D.	Comply directive requirements
	Cd	mg/kg	BL	N.D.	
	Hg	mg/kg	BL	N.D.	
	Cr ⁶⁺	mg/kg	BL	N.D.	
	PBBs	mg/kg	BL	N.D.	
	PBDEs	mg/kg	BL	N.D.	
	DIBP	mg/kg	/	N.D.	
	DBP	mg/kg	/	N.D.	
	BBP	mg/kg	/	N.D.	
	DEHP	mg/kg	/	N.D.	
31 Transparent rubber	Pb	mg/kg	BL	N.D.	Comply directive requirements
	Cd	mg/kg	BL	N.D.	



Test Report

Report No: ST20240429008-R1

Page 19 of 25

Sample description	Items	Unite	XRF Scan results	Test results	Result
	Hg	mg/kg	BL	N.D.	
	Cr ⁶⁺	mg/kg	BL	N.D.	
	PBBs	mg/kg	BL	N.D.	
	PBDEs	mg/kg	BL	N.D.	
	DIBP	mg/kg	/	N.D.	
	DBP	mg/kg	/	N.D.	
	BBP	mg/kg	/	N.D.	
	DEHP	mg/kg	/	N.D.	
32 Transparent rubber	Pb	mg/kg	BL	N.D.	Comply directive requirements
	Cd	mg/kg	BL	N.D.	
	Hg	mg/kg	BL	N.D.	
	Cr ⁶⁺	mg/kg	BL	N.D.	
	PBBs	mg/kg	BL	N.D.	
	PBDEs	mg/kg	BL	N.D.	
	DIBP	mg/kg	/	N.D.	
	DBP	mg/kg	/	N.D.	
	BBP	mg/kg	/	N.D.	
	DEHP	mg/kg	/	N.D.	



Test Report

Report No: ST20240429008-R1

Page 20 of 25

Sample description	Items	Unite	XRF Scan results	Test results	Result
33 Black plastic	Pb	mg/kg	BL	N.D.	Comply directive requirements
	Cd	mg/kg	BL	N.D.	
	Hg	mg/kg	BL	N.D.	
	Cr ⁶⁺	mg/kg	BL	N.D.	
	PBBs	mg/kg	BL	N.D.	
	PBDEs	mg/kg	BL	N.D.	
	DIBP	mg/kg	/	N.D.	
	DBP	mg/kg	/	N.D.	
	BBP	mg/kg	/	N.D.	
	DEHP	mg/kg	/	328	
34 Black plastic	Pb	mg/kg	BL	N.D.	Comply directive requirements
	Cd	mg/kg	BL	N.D.	
	Hg	mg/kg	BL	N.D.	
	Cr ⁶⁺	mg/kg	BL	N.D.	
	PBBs	mg/kg	BL	N.D.	
	PBDEs	mg/kg	BL	N.D.	
	DIBP	mg/kg	/	N.D.	
	DBP	mg/kg	/	N.D.	



Test Report

Report No: ST20240429008-R1

Page 21 of 25

Sample description	Items	Unite	XRF Scan results	Test results	Result
	BBP	mg/kg	/	N.D.	
	DEHP	mg/kg	/	487	
35 Black plastic	Pb	mg/kg	BL	N.D.	Comply directive requirements
	Cd	mg/kg	BL	N.D.	
	Hg	mg/kg	BL	N.D.	
	Cr ⁶⁺	mg/kg	BL	N.D.	
	PBBs	mg/kg	BL	N.D.	
	PBDEs	mg/kg	BL	N.D.	
	DIBP	mg/kg	/	N.D.	
	DBP	mg/kg	/	N.D.	
	BBP	mg/kg	/	N.D.	
	DEHP	mg/kg	/	N.D.	
36 Black plastic	Pb	mg/kg	BL	N.D.	Comply directive requirements
	Cd	mg/kg	BL	N.D.	
	Hg	mg/kg	BL	N.D.	
	Cr ⁶⁺	mg/kg	BL	N.D.	
	PBBs	mg/kg	X	N.D.	
	PBDEs	mg/kg	X	N.D.	



Test Report

Report No: ST20240429008-R1

Page 22 of 25

Sample description	Items	Unite	XRF Scan results	Test results	Result
	DIBP	mg/kg	/	N.D.	
	DBP	mg/kg	/	N.D.	
	BBP	mg/kg	/	N.D.	
	DEHP	mg/kg	/	N.D.	
37 Circuit board	Pb	mg/kg	BL	N.D.	Comply directive requirements
	Cd	mg/kg	BL	N.D.	
	Hg	mg/kg	BL	N.D.	
	Cr ⁶⁺	mg/kg	BL	N.D.	
	PBBs	mg/kg	X	N.D.	
	PBDEs	mg/kg	X	N.D.	
	DIBP	mg/kg	/	N.D.	
	DBP	mg/kg	/	N.D.	
	BBP	mg/kg	/	N.D.	
	DEHP	mg/kg	/	N.D.	
38 Yellow plastic	Pb	mg/kg	BL	N.D.	Comply directive requirements
	Cd	mg/kg	BL	N.D.	
	Hg	mg/kg	BL	N.D.	
	Cr ⁶⁺	mg/kg	BL	N.D.	
	PBBs	mg/kg	BL	N.D.	



Test Report

Report No: ST20240429008-R1

Page 23 of 25

Sample description	Items	Unite	XRF Scan results	Test results	Result
	PBDEs	mg/kg	BL	N.D.	
	DIBP	mg/kg	/	N.D.	
	DBP	mg/kg	/	N.D.	
	BBP	mg/kg	/	N.D.	
	DEHP	mg/kg	/	N.D.	

Note:

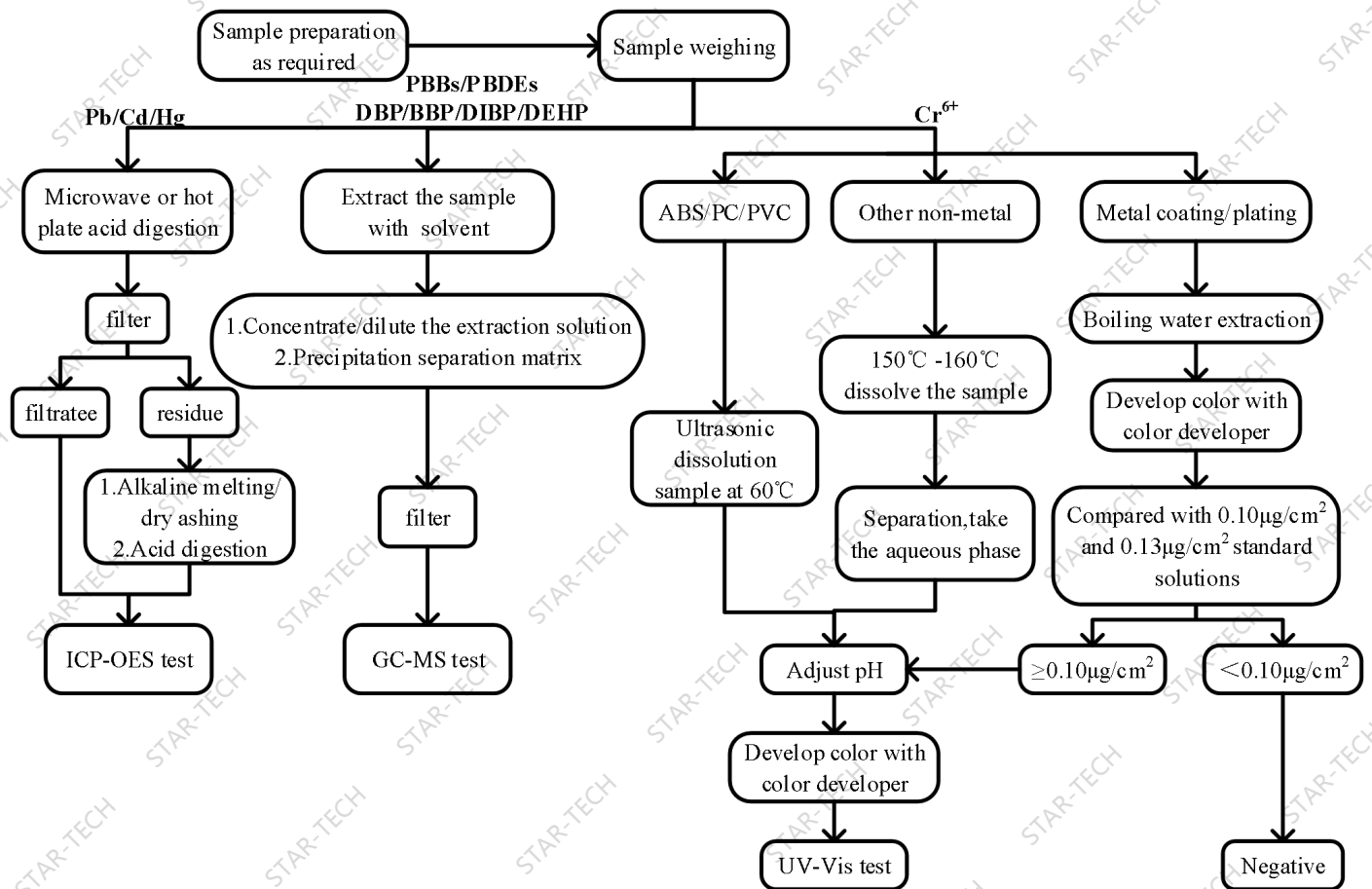
- 1) 1 mg/kg = 1ppm = 0.0001%
- 2) MDL = Method Detection limit
- 3) N.D. = Not detected (<MDL)
- 4) “/”= No detection required
- 5) Negative =Hexavalent chromium is not detected in incolourless and coloured corrosion-protected
- 6) coatings on metal* = Pb The test result exceeds the limit, The material is copper alloy, Comply with the exemption provisions of Annex III of directive 2011/65/EU*6 (c) Copper alloys contain not more than 4% lead by mass”required.



Test Report

Appendix

The sample is processed according to the following process





Test Report

Report No: ST20240429008-R1

Page 25 of 25

Note: Test results and data are only used by customers for scientific research, teaching or internal quality control purposes, and do not have a proof role for society.

* * * * * END * * * * *