



FOTON MOTOR

AT A GLANCE

ABOUT FOTON MOTOR



Founded in 1996, Foton Motor is the largest international commercial vehicle manufacturer in China in terms of product variety and scale.

No.1

In China's Commercial Vehicle Industry

630,000 units sold in 2023

No.1

In Global Truck Sales

540,000 units sold in 2023

No.1

In Overseas Export Sales

14 consecutive years

No.1

Brand Value

USD 33.22 billion



HISTORY



28 years of growth
from an emerging enterprise to a global leader in commercial vehicles.

1996
Foton Motor founded

1999
No.1 sales in China light-duty truck market

2003
Started R&D on NEV

2004
Set up Foton overseas, initiating global journey



2007
Foton Cummins JV established

FOTON DAIMLER
福田戴姆勒

2012
Foton Daimler JV established

2016
Acquired German brand Brock and entered the international high-end sweeper market



2017
Foton ZF JV established

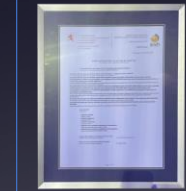


2018
Partnered with Piaggio Group and entered the European market



2019
Established JV with CP Group in Thailand

2022
New energy products entered the European market



2023
Accumulated over 11 million units in global sales



2024
Partnered with IVECO to expand European and south American markets



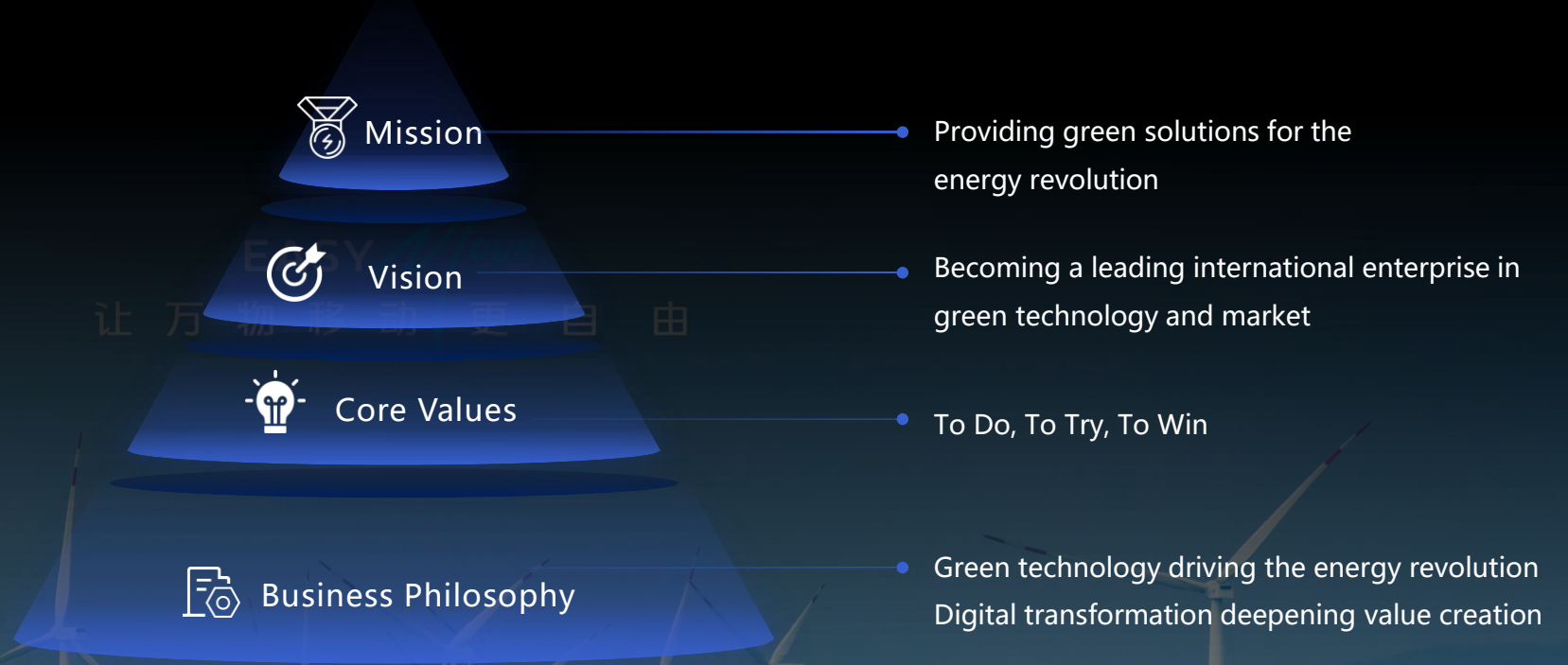
EASY
Move

VISION



Since its founding, Foton Motor has been dedicated to becoming a leading international enterprise in green technology and market.

EASY Move
让万物移动更自由



Building a business system that integrates vehicles and mobile equipment, parts, digital technology, and commercial ecology.



Vehicles and mobile equipment



Parts

GVW 2.5–55T Covering all types of vehicles

ICE | NEV

ICE parts

Engine | Gearbox | Axle

NEV parts

Battery | Motor | Electronic control



Digital technology



Business ecosystem

Intelligent
technology

Telematics
technology

Data
management

After-market ecosystem

Usage | Maintenance |
Management | Trade-in

New energy ecosystem

Energy production | Energy consumption |
Energy trading

GLOBAL R&D



Outstanding global product R&D,
with its investment accounting for 3.5% of sales revenue,
and 35.4% of employees engaged.



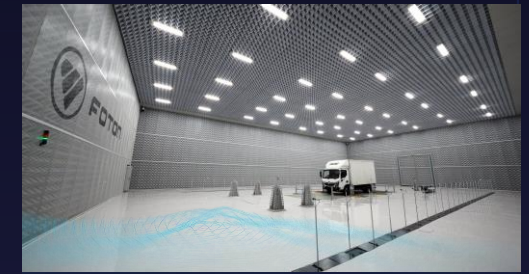
24 global R&D centers

Beijing China | Europe | Japan | Regional Technical Centers

Advanced commercial vehicle testing capabilities



EMC lab — Largest in Asia



Passby-Noise Semi Anechoic Chamber — Largest in Asia



Durability test system



Salt spray test chamber

(EMC:Electro Magnetic Compatibility)

TECHNOLOGIES



Intelligent networking



Telematics system



Fleet management system

New energy



BEV

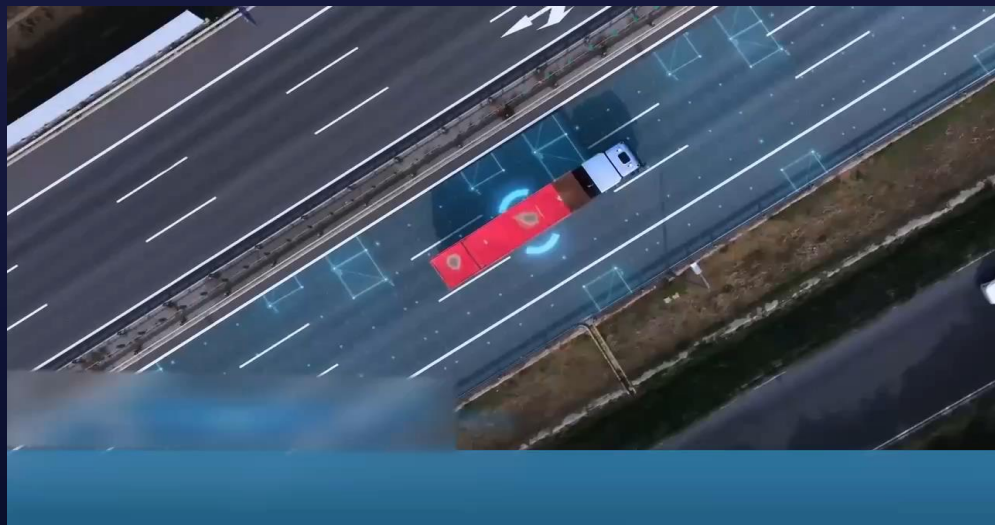


FCEV



Hybrid

Autonomous driving



Advanced autonomous driving



20+ core leading technologies

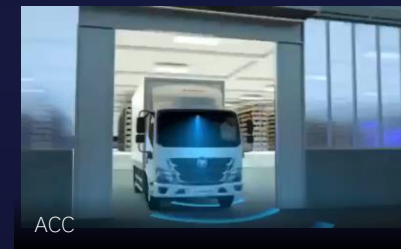
ADAS application



AEBS



LKA



ACC



ALC



LDWS



PCC



Safety



Intelligence

INTELLIGENT MANUFACTURING



21 smart manufacturing bases in China + 32 global KD plants



Superpower
lighthouse factory



FOTONDAIMLER
福田戴姆勒

Digital intelligent
factory



Advanced gearbox
production base



Industry 4.0 global
benchmark factory



21

Manufacturing bases in China

32

Global KD plants

GLOBAL SALES & SERVICE

Sold in over 130 countries and regions
delivering world-class products and services to create value for global customers.

130

Countries and regions

1000+

Dealers

1200+

Service Stations

24

Training Centers

97

Parts Warehouses



Comprehensive coverage of ICE and NEV



ICE



NEV



Special vehicle



NEW BUSINESS ECOLOGY



Building a circular economy value chain to provide customers with integrated green solutions, enhancing brand value and boosting new vehicle sales while supporting supply chain partners.



GLOBAL PARTNERS



Working with global partners
to provide better products and services to customers worldwide.



SOCIAL RESPONSIBILITY

Fulfilling our role as a corporate citizen by taking social responsibility and making contributions to communities and society.



EASY *Move*
让万物移动更自由

