

**Smart Transducer
Series**

Light weight

Easy to handle

Smart design

Innovating Healthcare, Embracing the Future

For a society where all can enjoy a secure, safe, healthy way of life,
Hitachi delivers innovation for implementing healthcare services
tailored to individuals.

·ARIETTA, LISENDO, Noblus are registered trademarks or trademarks of Hitachi, Ltd.
in Japan and other countries.

·ARIETTA 850SE is the model limiting the functions of ARIETTA 850.

·Specifications and appearance may be subject to change for improvement without notice.

For proper use of the system, be sure to read the operating manual prior to placing it into service.

·The standard components and optional items differ depending on the country.

Not all products are marketed in all countries.

Please contact your local Hitachi distributors for details.

Convex Transducers

C251

Abdomen
5-1MHz
70deg.
(50R)



RV-004 *1

C23

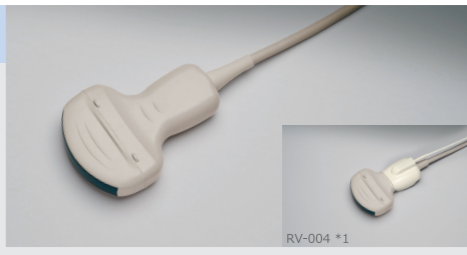
Abdomen
6-1MHz
70deg.
(25R)



RV-017 *1

C252

Abdomen
6-1MHz
70deg.
(50R)



RV-004 *1

C23RV

Abdomen
Built-in sensor*
6-1MHz
70deg.
(25R)



*Built-in magnetic sensor for RVS

C253

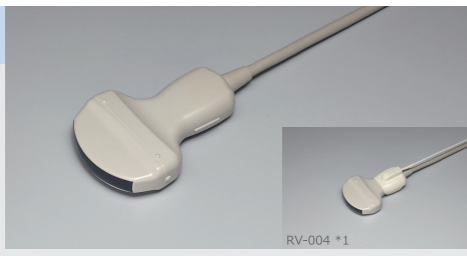
Abdomen
5-1MHz
70deg.
(50R)



RV-004 *1

C35

Abdomen
8-2MHz
70deg.
(50R)



RV-004 *1

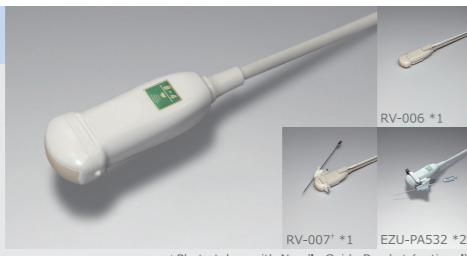
C41

Abdomen
13-4MHz
100deg.
(12R)



C42

Abdomen
8-4MHz
80deg.
(21R)



RV-006 *1

RV-007 *1

EZU-PA532 *2

! Photo taken with Needle Guide Bracket (optional)

Linear Transducers

L34

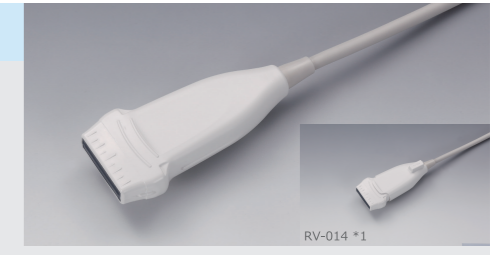
Small parts
7-3MHz
38mm



EZU-PA3C1H *3

SML44

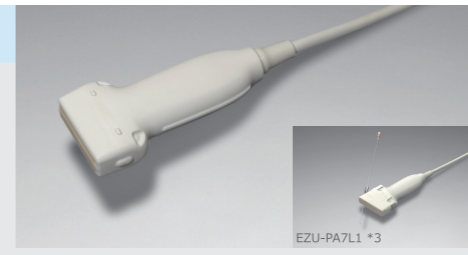
Small parts
22-2MHz
38mm



RV-014 *1

L44

Small parts
9-4MHz
38mm



EZU-PA7L1 *3

L35

Small parts
9-2MHz
45mm



RV-017 *1

L441

Small parts
12-2MHz
38mm



L442

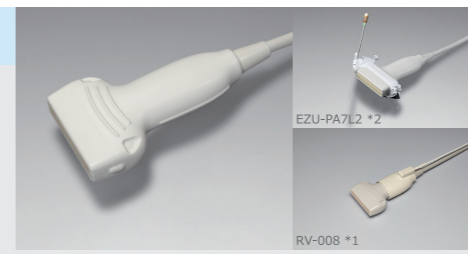
Small parts
12-2MHz
38mm



EZU-PA7L1 *3

L55

Small parts
13-5MHz
50mm

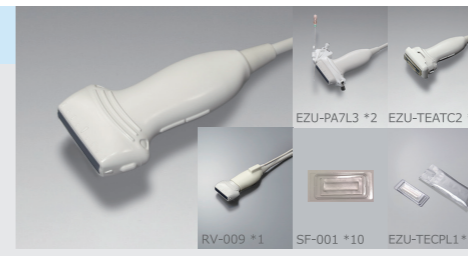


EZU-PA7L2 *2

RV-008 *1

L64

Small parts
18-5MHz
38mm



EZU-PA7L3 *2

EZU-TEATC2 *4

RV-009 *1

SF-001 *10

EZU-TECPL1 *10

Sector Transducers

MXS1

Cardiology
5-1MHz
90deg.



S31

Cardiology
9-2MHz
90deg.



S11

Cardiology
5-1MHz
90deg.



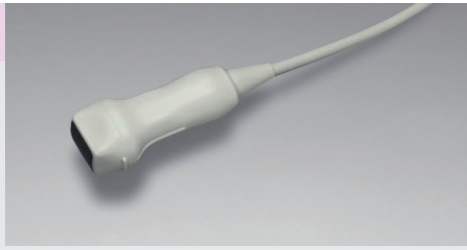
S42

Cardiology
14-3MHz
90deg.



S12

Cardiology
5-1MHz
90deg.



S121

Cardiology
5-1MHz
90deg.



S211

Cardiology
5-1MHz
90deg.



Transesophageal Transducers

MXS2ESLL1

Cardiology
10-1MHz
90deg.



S3ESEL

Cardiology
8-2MHz
90deg.



S3ESL1

Cardiology
9-2MHz
90deg.




S3ESCLS

Cardiology
8-2MHz
90deg.



C22P
Biopsy
6-1MHz
74deg.
(22R)



MP-2824 *6
EZU-PA7C2 *2

† Photo taken with RVS Attachment (standard component)

C42T
Intraoperative
10-3MHz
65deg.
(20R)



RV-003 *1

L44LA1
Intraoperative
13-2MHz
38mm



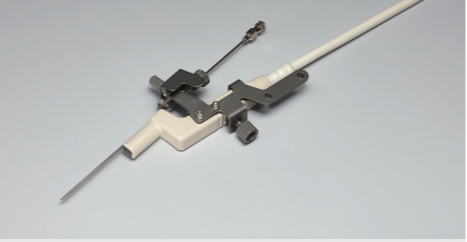
C25P
Biopsy
5-1MHz
70deg.
(50R)



EZU-PA7B1-1:12,13G / EZU-PA7B1-2:14-16G / EZU-PA7B1-3:17-19G / EZU-PA7B1-4:20-23G / EZU-PA7B1-C:17G (for RFA needle) *5
RV-005 *1

† Photo taken with Biopsy Attachment (optional)

S31KP
Biopsy /
Intraoperative
8-3MHz
90deg.



† Photo taken with Puncture Adapter MP-2450 (standard component)

L46K
Intraoperative
13-3MHz
60mm




MP-2448 *6

C22K
Intraoperative
6-1MHz
82deg.
(21R)



MP-2781 *6
MP-2781-5 *6 MP-2781-25 *6

L31KP
Biopsy /
Intraoperative
9-2MHz
6mm



† Photo taken with Puncture Adapter MP-2450 (standard component)

L46K1
Intraoperative
14-2MHz
63mm



C22I
Intraoperative
6-1MHz
82deg.
(20R)



L43K
Intraoperative
12-2MHz
26mm



L51K
Intraoperative
15-3MHz
13mm



C22T
Intraoperative
6-1MHz
82deg.
(20R)



L44K
Intraoperative
14-2MHz
42mm



L53K
Intraoperative
15-3MHz
25mm



C42K
Intraoperative
10-4MHz
65deg.
(21R)



MP-2458 *6

L44LA
Intraoperative
13-2MHz
36mm



C41B
 Transvaginal,
 Transrectal
 10-2MHz
 200deg.
 (10R)

CL4416R
 Transrectal
 C:10-2MHz
 L:14-2MHz
 C:180deg.
 L:63mm

VC34
 Abdomen
 7-2MHz
 70deg.
 (40R)

C41RP
 Transrectal
 9-2MHz
 180deg.
 (9R)

† Puncture Adapter MP-2452-G18 for C41RP transducer is standard component

C41L47RP
 Transrectal
 C:8-4MHz
 L:10-5MHz
 C:200deg.(10R)
 L:64mm

VC35
 Abdomen
 8-2MHz
 72deg.
 (46R)

CC41R
 Transrectal
 8-4MHz
 (Both sagittal and axial scan head)
 100deg.(10R) (Sagittal scan)/
 120deg.(10R) (Axial scan)

R41R
 Transrectal
 10-5MHz
 360deg.
 (6R)

VC41V
 Transvaginal
 8-2MHz
 145deg.†
 (10R)

† The maximum viewing angle depends on the model to connect.

C41V1
 Transvaginal
 10-2MHz
 200deg.
 (10R)

R41RL
 Transrectal
 10-5MHz
 360deg.
 (6R)

VL54
 Small parts
 13-5MHz
 38mm

CC41R1
 Transrectal
 10-2MHz
 (Both sagittal and axial scan head)
 180deg.(9R)
 (Both sagittal and axial scan head)

C41V
 Transvaginal,
 Transrectal
 8-4MHz
 200deg.
 (10R)

List of optional Transducers

*# (Optional)

- *1 RVS attachment
- *2 Needle guide bracket
- *3 Coupler attachment
- *4 Acoustic coupler attachment
- *5 Biopsy attachment
- *6 Puncture adapter
- *7 Sterile puncture adoptor
- *8 Puncture guide tube
- *9 Puncture guide fixture
- *10 Acoustic coupler

	LISENDO 880 LE	ARIETTA 850LE/850	ARIETTA 850 SE	ARIETTA 750LE/750SE/750VE	ARIETTA 70/570/V70	ARIETTA 65	ARIETTA 60/560/V60	ARIETTA 50 LE/50	Noblus	ARIETTA Precision	ARIETTA Prologue	
Convex Transducers	C251	✓	✓	✓	✓	✓	✓	✓	✓	✓	✓	
	C252 *	✓	✓	✓	✓							
	C253			✓	✓			✓				
	C35	✓	✓	✓	✓	✓	✓		✓		✓	
	C41				✓	✓	✓		✓			
	C42	✓	✓	✓	✓	✓	✓		✓		✓	
	C23 *		✓	✓	✓							
	C23RV *		✓	✓	✓							
	L34	✓	✓	✓	✓	✓	✓	✓		✓		
Linear Transducers	L44						✓		✓		✓	
	L441	✓	✓	✓	✓	✓	✓		✓	✓	✓	
	L442			✓	✓			✓				
	L55		✓	✓	✓	✓	✓	✓	✓		✓	
	L64	✓	✓	✓	✓	✓	✓	✓	✓	✓	✓	
	SML44	✓	✓	✓								
	L35 *	✓	✓	✓								
	MXS1 *	✓	✓		✓							
	S11			✓	✓			✓				
	S12 *					✓						
Sector Transducers	S121 *	✓	✓	✓	✓							
	S211 *						✓	✓	✓		✓	
	S31 *	✓	✓	✓	✓	✓	✓		✓		✓	
	S42	✓	✓	✓	✓	✓						
	MXS2ESL1 *	✓										
	S3ESEL	✓	✓	✓	✓	✓			✓			
	S3ESL1	✓	✓	✓	✓	✓		✓				
	S3ESCLS	✓	✓	✓								
	C22P		✓	✓	✓	✓	✓	✓	✓	✓	✓	
	C25P		✓	✓	✓	✓	✓	✓		✓	✓	
Biopsy/ Intraoperative Transducers	C22K		✓	✓	✓	✓	✓		✓			
	C22I				✓	✓	✓		✓	✓		
	C22T				✓	✓	✓		✓	✓		
	C42K	✓	✓	✓	✓	✓	✓		✓	✓	✓	
	C42T		✓	✓	✓	✓	✓		✓	✓		
	S31KP				✓	✓	✓		✓	✓		
	L31KP					✓						
	L43K		✓	✓	✓	✓	✓		✓	✓		
	L44K		✓	✓	✓	✓	✓			✓		
	L44LA		✓	✓	✓	✓	✓		✓	✓		
	L44LA1		✓	✓	✓	✓	✓		✓	✓		
	L46K					✓	✓					
	L46K1		✓	✓	✓	✓	✓			✓		
	L51K		✓	✓	✓	✓	✓			✓		
	L53K	✓	✓	✓	✓	✓	✓	✓	✓	✓	✓	
	Transvaginal, Transrectal Transducers	C41B		✓	✓	✓	✓	✓	✓	✓		✓
		C41RP		✓	✓	✓	✓	✓	✓			
CC41R			✓	✓	✓	✓	✓		✓			
C41V1			✓	✓	✓	✓	✓	✓	✓		✓	
CC41R1			✓	✓		✓	✓			✓		
C41V					✓	✓		✓	✓	✓		
CL4416R			✓	✓		✓	✓			✓		
C41L47RP			✓	✓	✓	✓	✓		✓	✓		
R41R			✓	✓	✓	✓	✓		✓			
R41RL			✓	✓	✓	✓	✓			✓		
3D/4D transducers	VC34		✓	✓		✓	✓					
	VC35		✓	✓	✓	✓	✓					
	VC41V		✓	✓	✓	✓	✓					
	VL54					✓	✓					

* Single Crystal