

ALPHA BY DESIGN



Clinical Outcomes with Cobalt Chromium Biolimus A9™ DES compared with Stainless Steel Biolimus A9™ DES in All-Comers Patients after 2 years

- Dr Ian Menown, Craigavon, N. Ireland
- (on behalf of the Biomatrix Alpha Registry Investigators)

Disclosure Statement of Financial Interest

Speaker's name: Ian Menown

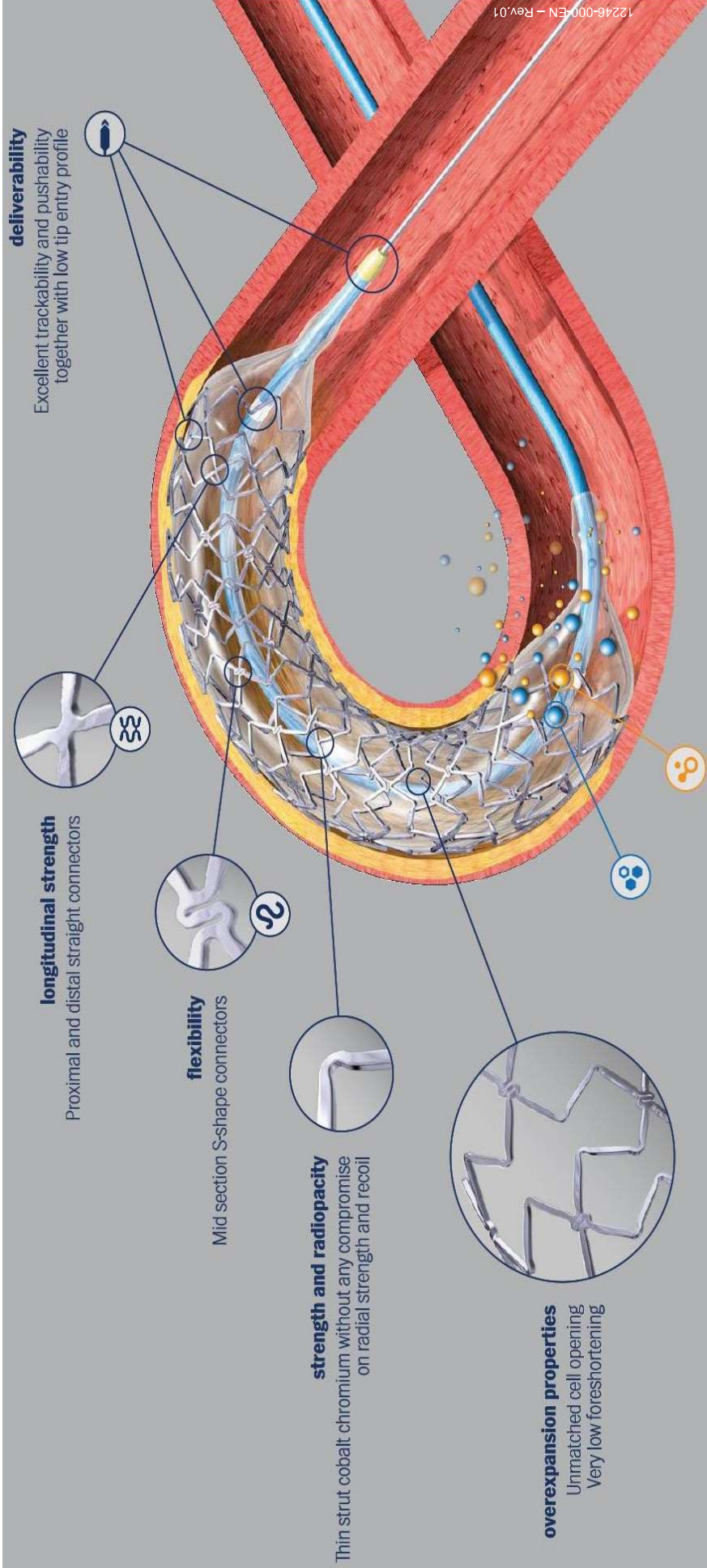
✓ I have the following potential conflicts of interest to declare

Receipt of honoraria or consultation fees Biosensors Europe SA

Why this study?

- Thin strut BMS showed improved clinical outcomes compared to thicker strut BMS in the ISAR-STEREO trials.
- However, reducing strut thickness may effect drug delivery and there is limited data comparing otherwise similar thin and thick strut DES.
- We compared the clinical outcomes of patients treated with the thin strut (84-88µm) cobalt chromium biodegradable polymer Biolimus A9™ eluting stent (CoCr-BP-BES) to patients treated with the stainless-steel biodegradable polymer Biolimus A9™ eluting stent (SS-BP-BES).

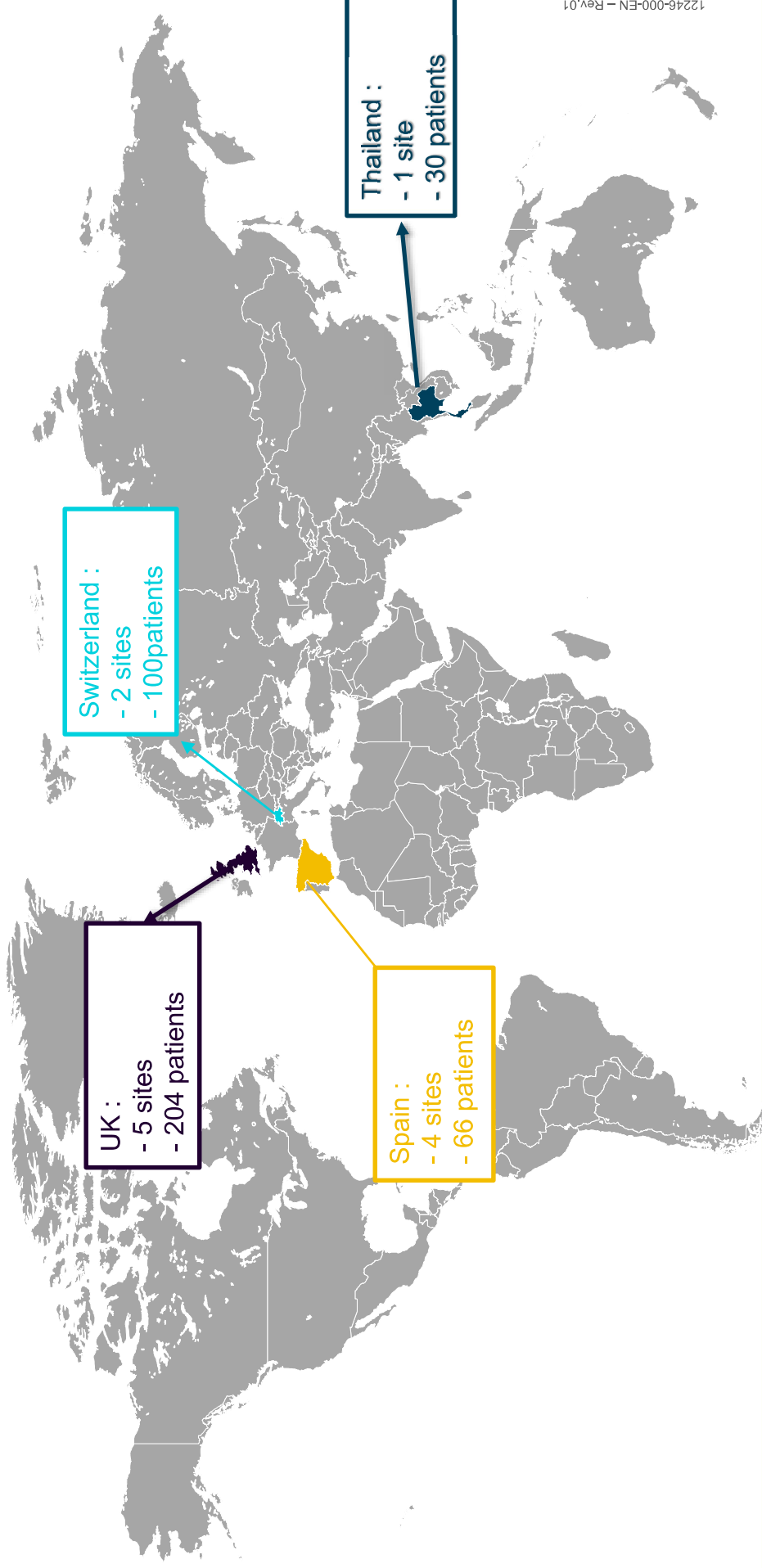
Biomatrix™ Alpha (CoCr-BP-BES)



How was the study executed?

- 400 patients from 12 centres receiving at least one BioMatrix Alpha were prospectively enrolled into the Biomatrix™ Alpha registry.
- A pre-specified comparison was conducted to 857 patients who received at least one BioMatrix™ stent in the LEADERS study.
- The primary endpoint was MACE at 9 months (composite of cardiac death, MI or clinically driven target vessel revascularization).
- Now we present the 2 year follow-up data.

Biomatrix Alpha Registry Enrollment by country and sites



Biomatrix Alpha Registry vs LEADERS

Baseline Demographics

	BioMatrix™ Alpha n=400 ¹	BioMatrix™ n= 857 ¹	P value
Mean age (years)	64.7±11	64.6±10.8	0.892
Female gender (%)	21.5	25	0.178
STEMI or NSTEMI (%)	41.1	32.7	0.004
Unstable angina (%)	14.0	22.2	<0.001
Prior MI (%)	18.8	32.2	<0.0001
Previous PCI or CABG (%)	24.6	40.9	<0.0001
Previous stroke (%)	6.3	4.7	0.292
Current smoker (%)	21.0	24.1	0.229
Hypertension (%)	57.3	73.6	<0.0001
Dyslipidemia (%)	56.7	65.4	0.003
Diabetes (%)	19.3	26.1	0.009
Renal insufficiency (%)	11.5	5.4	<0.0001
Staged procedure (%)	5.5	4.4	0.476

Biomatrix Alpha Registry vs LEADERS

Procedural Characteristics

		BioMatrix™ Alpha n=400 ¹	BioMatrix n=857 ¹	p value
Target lesion coronary artery (%)	LAD	47.4	37.2	<0.0001
	LCX	20.1	28.0	<0.001
	LM	2.3	2.6	0.399
	RCA	26.9	30.7	0.112
De novo lesions (%)		95.9	94.0	0.123
Bifurcation lesions (%)		25.8	22.4	0.132
Number of stents per lesion		1.34±0.70	1.20±0.48	<0.0001
Severe calcification (%)		16.2	13.1	0.09
Lesion length (mm)		21.7±12.8	15.2±11.7	<0.0001
Reference vessel diameter (mm)		3.0±0.5	2.6±0.61	<0.0001

12246-000-EN - Rev.01

Biomatrix Alpha Registry vs LEADERS

Propensity Adjustment

- Some differences in baseline characteristics were present between the populations.
- A propensity adjustment method (inverse probability of treatment weight) utilising 15 variables was thus used to adjust for these differences.

	Weighted p values (after IPTW adjustment) CoCr-BP-BES vs. SS-BP-BES
Mean age (years)	0.689
Female gender (%)	0.523
BMI	0.426
Family History	0.707
Current smoker (%)	0.541
Hypertension (%)	0.505
Dyslipidemia (%)	0.585
Diabetes (%)	0.614
Renal insufficiency (%)	0.934
Previous Stroke	0.971
Prior MI (%)	0.953
Previous PCI or CABG	0.508
STEMI (%)	0.894
Staged procedure	0.900
Multilesion procedure (%)	0.881

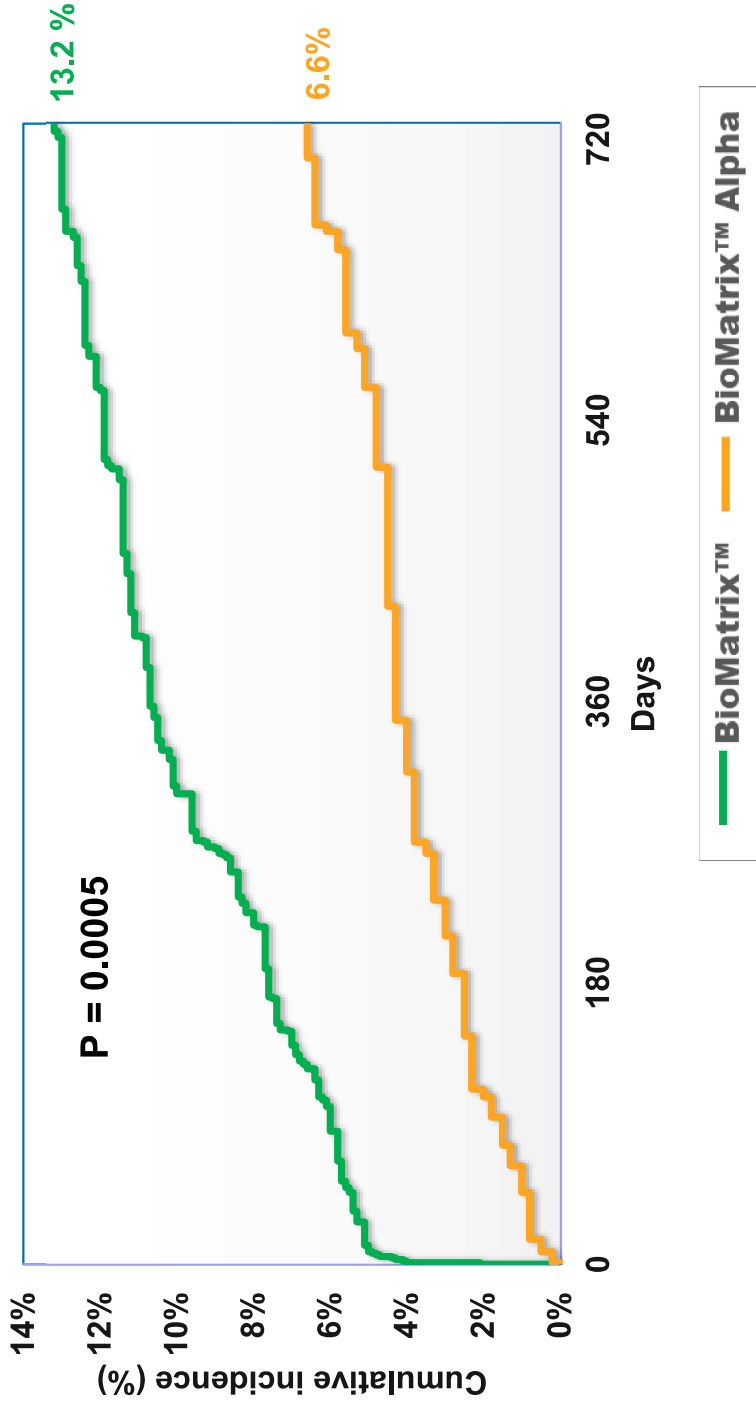
Biomatrix Alpha Registry Primary end-point: MACE at 9 months

	BioMatrix™ Alpha n=400 ¹	95% CI
MACE (Cardiac death or MI or cd-TVR)	15 (3.94%)*	[2.39-6.47]
Cardiac death	3 (0.76%)	[0.25-2.33]
Myocardial Infarction	4 (1.11%)	[0.41-2.95]
Clinically-driven target vessel revascularization (cd-TVR)	10 (2.6%)	[1.41-4.79]

*: $p < 0.001$ for non-inferiority vs BioMatrix™
(objective performance criteria)

12246-000-EN - Rev.01

Biomatrix Alpha Registry¹ vs LEADERS²: Unadjusted MACE at 2 years



12246-000-EN - Rev.01

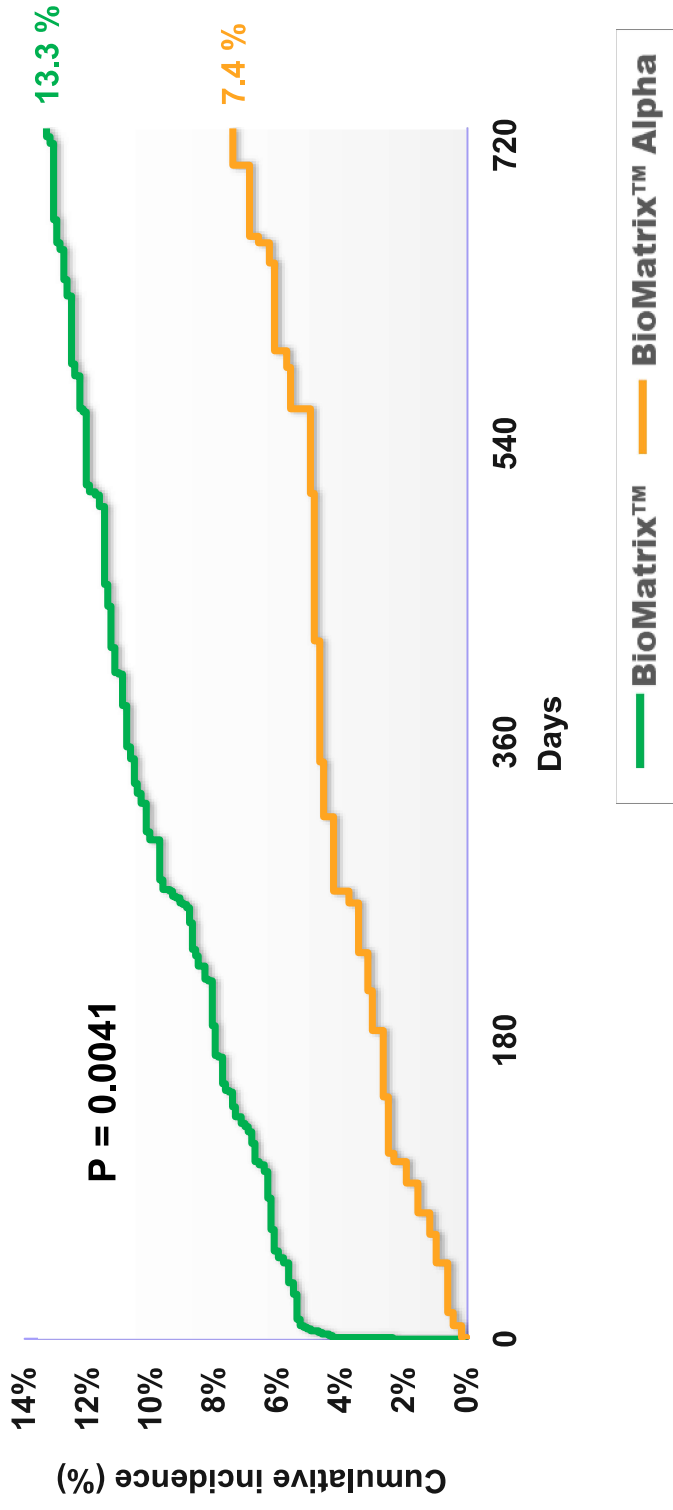
Biomatrix Alpha Registry vs LEADERS:

Unadjusted comparison

	BioMatrix™ Alpha (n=400) ¹	BioMatrix™ (n=857) ¹	Hazard ratio	P
MACE	26 (6.65%)	112 (13.23%)	0.48 [0.31-0.73]	0.0005
- Cardiac death	4 (1.01%)	27 (3.21%)	0.31 [0.11-0.89]	0.022
- Myocardial infarction	12 (3.13%)	55 (6.48%)	0.46 [0.24-0.85]	0.012
- cd-TVR	16 (4.09%)	65 (7.8%)	0.51 [0.3-0.89]	0.0152
All death	15 (3.82%)	40 (4.72%)	0.79 [0.44-1.44]	0.449
Target vessel MI	5 (1.29%)	27 (3.18%)	0.39 [0.15-1.03]	0.048
Definite or probable ST	3 (0.81%)	26 (3.07%)	0.25 [0.08-0.82]	0.013
Any revascularization	29 (7.46%)	143 (17.14%)	0.40 [0.27-0.60]	<0.0001
TVF (cardiac death or TV-MI or cd-TVR)	20 (5.09%)	96 (11.36%)	0.43 [0.27-0.7]	0.0004
POCE (all death or any MI or any revasc)	43 (10.9%)	192 (22.58%)	0.44 [0.32-0.61]	<0.0001

Biomatrix Alpha Registry¹ vs LEADERS²:

Propensity adjusted MACE at 2 years



12246-000-EN - Rev.01

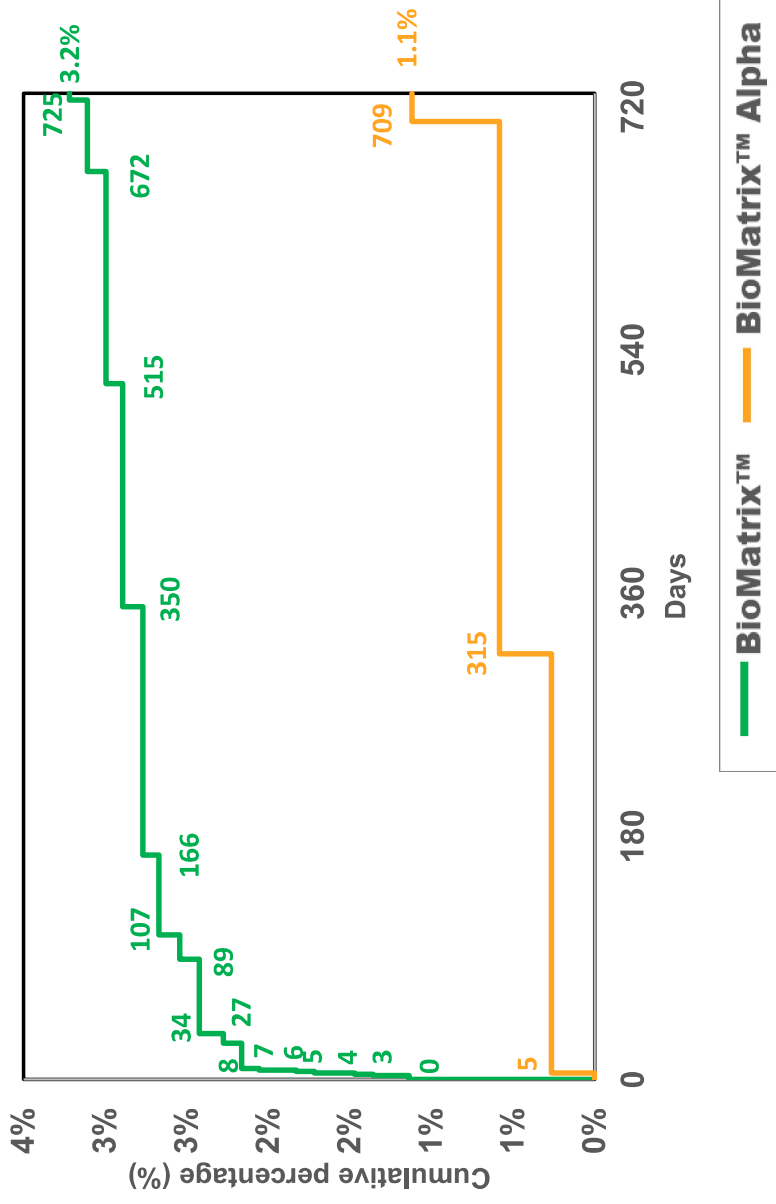
Biomatrix Alpha Registry vs LEADERS:

Propensity adjusted comparison

	BioMatrix™ Alpha ¹	BioMatrix™ ¹	Hazard ratio	P
MACE	7.41%	13.3%	0.53 [0.35-0.79]	0.0041
- Cardiac death	1.29%	3.26%	0.39 [0.15-1.00]	0.064
- Myocardial infarction	2.82%	6.62%	0.4 [0.21-0.76]	0.010
- cd-TVR	4.73%	7.64%	0.61 [0.36-1.02]	0.084
All death	4.12%	4.74%	0.86 [0.49-1.52]	0.638
Target vessel MI	0.9%	3.22%	0.27 [0.09-0.82]	0.029
Definite or probable ST	1.12%	3.22%	0.32 [0.11-0.9]	0.034
Any revascularization	8.36%	16.63%	0.47 [0.32-0.68]	0.0003
TVF (cardiac death or TV-MI or cd-TVR)	5.99%	11.21%	0.52 [0.33-0.81]	0.008
POCE (all death or any MI or any revasc)	11.84%	22.25%	0.49 [0.35-0.67]	<0.0001

Biomatrix Alpha Registry¹ vs LEADERS²:

Definite or Probable Stent Thrombosis



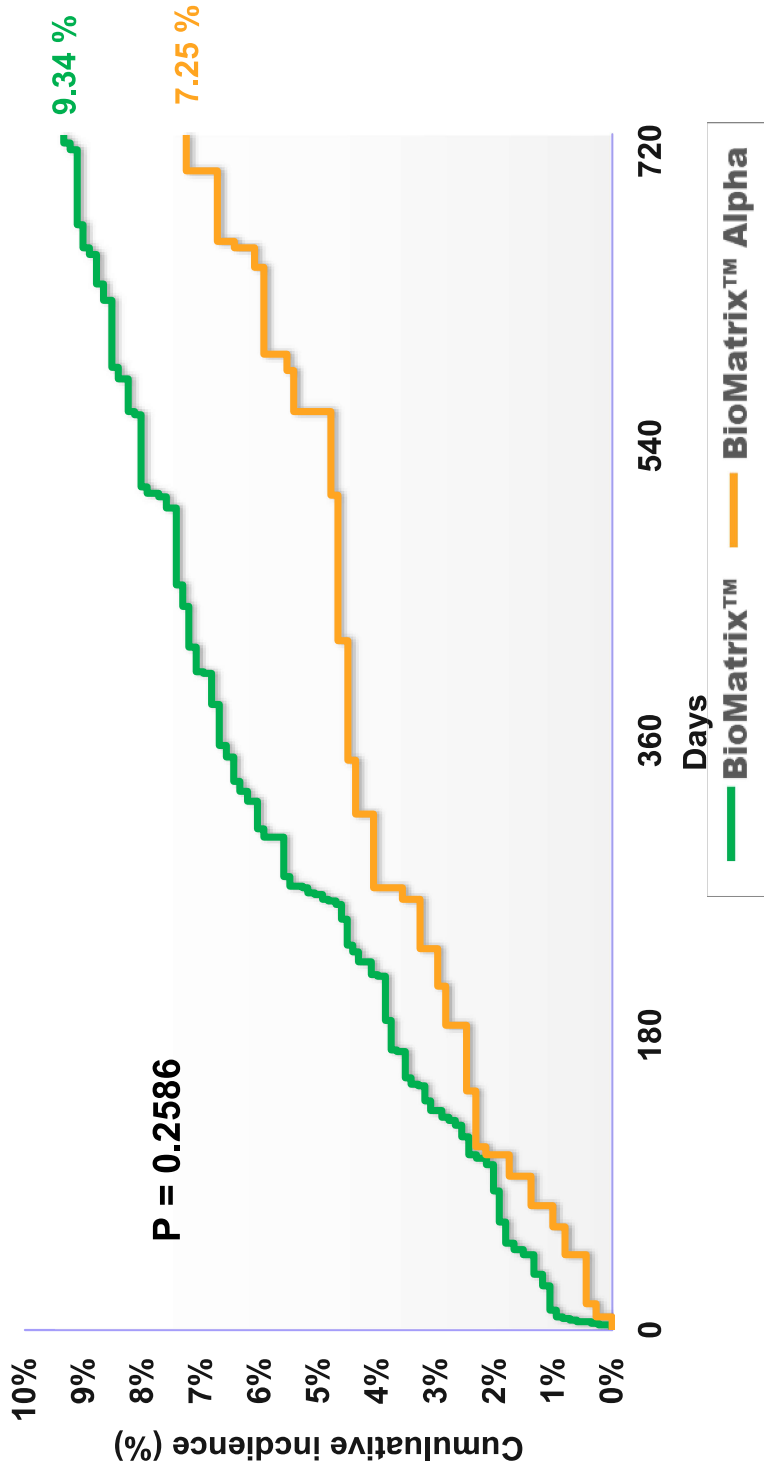
12246-000-EN - Rev.01

Biomatrix Alpha Registry vs LEADERS: Type 4a MI

- Although the Biomatrix Alpha Registry protocol was designed to emulate the LEADERS protocol, the updated Third Universal Definition of Myocardial Infarction (2012) was used only in the registry.
- Recognizing that the different definitions might introduce a potential discrepancy in MI reporting, particularly for periprocedural (Type 4a) MI, we conducted a landmark analysis censoring clinical events contributing to the primary end-point that occurred up to and including day 3.

Biomatrix Alpha Registry¹ vs LEADERS²:

Propensity adjusted MACE: landmark analysis @ 3 days



12246-000-EN - Rev.01

Biomatrix Alpha Registry vs LEADERS:

PS adjusted comparison – landmark analysis @ 3 days

	Biomatrix™ Alpha ¹	Biomatrix™ ¹	Hazard ratio	P
MACE	7.25%	9.34%	0.76 [0.5-1.17]	0.259
- Cardiac death	1.29%	3.26%	0.39 [0.15-1.00]	0.064
- Myocardial infarction	2.82%	2.36%	1.17 [0.56-2.47]	0.721
- cd-TVR	4.57%	6.39%	0.65 [0.38-1.10]	0.152
All death	4.12%	4.74%	0.86 [0.49-1.52]	0.638
Target vessel MI	0.9%	0.91%	1.01 [0.28-3.59]	0.991
Definite or probable ST	1.12%	2.11%	0.5 [0.17-1.45]	0.238
Any revascularization	8.2%	15.47%	0.5 [0.34-0.73]	0.001
TVF (cardiac death or TV-MI or cd-TVR)	5.83%	9.08%	0.63 [0.4-1.00]	0.078
POCE (all death or all MI or any revasc)	11.69%	18.39%	0.6 [0.43-0.83]	0.006

Conclusions

After 2 years of follow-up, a propensity adjusted comparison of all-comers patients from the Biomatrix Alpha Registry and LEADERS study showed that the thin strut (84-88µm) cobalt chromium biodegradable polymer Biolimus A9™ eluting stent (BioMatrix™ Alpha) had improved outcomes compared to the thick strut (120µm) stainless steel biodegradable polymer Biolimus A9™ eluting stent (Biomatrix™).

References & Disclaimer

1. I Menown Presentation TCT CONNECT October 2020

BioMatrix, BioMatrix Alpha and Biolimus A9 are trademarks or registered trademarks of Biosensors International Group, Ltd. BioMatrix and BioMatrix Alpha are CE Mark approved.

Data on file at Biosensors International for any sustained claims in this document.

CAUTION: The law restricts these devices to sale by or on the order of a physician and these products are intended for the use by or under the direction of a physician. Indications, contraindications, warnings and instructions for use can be found in the product labeling supplied with each device. Not available in the United States and any other country where applicable health authority product registration has not been obtained.

Information contained herein only for presentation outside the US and France.

© 2020 Biosensors International Group, Ltd. All rights reserved.