






OD ECS 040-4
ed. October 2018

Responsible CB:
PL-3 ITE PREDOM Division

TEST REPORT ENEC+ Scheme PD EPRS 003 LED modules for general lighting – Performance requirements	
Report Number.	BS-3/050/B/2/19/M1
Date of issue	21.04.2020
Total number of pages	32
Applicant's name	Signify Sp. z o.o.
Address	O/Kętrzyn ul. Chrobrego 8, 11-400 Kętrzyn, Poland
Test specification:	
Standard	PD EPRS 003:2018-05 (based on EN 62722-2-1:2016)
Test procedure	<input checked="" type="checkbox"/> ENEC+ <input type="checkbox"/> Other: _____
Non-standard test method	N/A
Test Report Form No.	EPRS_003b
Test Report Form(s) Originator	DEKRA Certification B.V.
Master TRF	Dated 2018-11
Copyright © 2018 ETICS, Brussels, Belgium. All rights reserved.	
This publication may be reproduced in whole or in part for non-commercial purposes as long as the ETICS is acknowledged as copyright owner and source of the material. ETICS takes no responsibility for and will not assume liability for damages resulting from the reader's interpretation of the reproduced material due to its placement and context.	
If this Test Report Form is used by non-ETICS members, the ECS logo and the reference to the ENEC+ Scheme procedure shall be removed.	
General disclaimer:	
The test results presented in this report relate only to the object tested. This report shall not be reproduced, except in full, without the written approval of the Issuing ECS Testing Laboratory. The authenticity of this Test Report and its contents can be verified by contacting the NCB, responsible for this Test Report.	

PD EPRS 003			
Clause	Requirement + Test	Result - Remark	Verdict
Test item description		Luminaires for road and street lighting	
Trade Mark		Philips	
Manufacturer		Signify Poland Sp. z o.o., O/Kętrzyn 11-400 Kętrzyn, ul. Chrobrego 8, Poland	
Factory		Signify Poland Sp. z o.o., O/Kętrzyn 11-400 Kętrzyn, ul. Chrobrego 8, Poland	
Model/Type reference		UniStreet gen2 BGP281 / BGP282 / BGP283 / BGP284; LumiStreet gen2 BGP291 / BGP292 / BGP293 / BGP294; LumiStreet Pro gen2 BGP391 / BGP392 / BGP393 / BGP394...II... - series	
Ratings		220 -240V, 50/60Hz, IP66, ta 15°C, 25°C, 35°C, 40°C, 45°C, 50°C	
ENEC Licence Number (EN60598 Series)		0207/ENEC/19/M1 dated 10.12.2019	
Responsible Testing Laboratory (as applicable), testing procedure and testing location(s):			
<input checked="" type="checkbox"/>	ECS Testing Laboratory:	ITE PREDOM Division	
	Testing location/ address	02-255 Warszawa, ul. Krakowiaków 53, Poland	
	Tested by (name, function, signature):	K. Lisowski 	
	Approved by (name, function, signature):	T. Małyska 	
	Supervised by (name, function, signature)	A. Piotrowski 	
<input type="checkbox"/>	Testing procedure: MTL		
	Testing location/ address		
	Tested by (name, function, signature):		
	Approved by (name, function, signature):		
	Supervised by (name, function, signature)		

PD EPRS 003			
Clause	Requirement + Test	Result - Remark	Verdict

List of Attachments (including a total number of pages in each attachment): N/A

Summary of testing: Tests Results - Positive

Tests performed (name of test and test clause):

EPRS 003:2018-05 based on EN 62722-2-1:2016

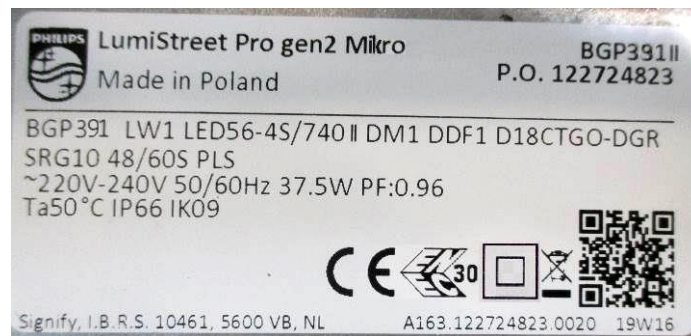
Testing location:

ITE PREDOM Division
02-255 Warszawa, ul. Krakowiaków 53, Poland

Summary of compliance with National Differences (List of countries addressed): N/A

The product fulfils the requirements of _____ (insert standard number and edition and delete the text in parenthesis, leave it blank or delete the whole sentence, if not applicable)

Copy of marking plate:



PD EPRS 003

Clause	Requirement + Test	Result - Remark	Verdict
--------	--------------------	-----------------	---------

Summary of Ratings:

Supply Voltage	220 – 240V		
Input Power (W).....	BGP281... /BGP291.../BGP391... - 5,2 – 43,5		
	BGP282... /BGP292.../BGP392... - 9,3 – 86,0		
	BGP283... /BGP293.../BGP393... - 27,0 – 148,0		
	BGP284... /BGP294.../BGP394... - 78,0 – 305,0		
	For details see the Appendixes No.1, No.2, No.3, No.4, No.5, No.6, No.7, No.8, No.9, No.10, No.11, No.12 – Lists of the luminaires – on CD		
Luminous Flux (lm)	BGP281... /BGP291.../BGP391... - 203 – 5824		
	BGP282... /BGP292.../BGP392... - 472,5 – 11570		
	BGP283... /BGP293.../BGP393... - 1470 – 21360		
	BGP284... /BGP294.../BGP394... - 3675 – 35200		
	For details see the Appendixes No.1, No.2, No.3, No.4, No.5, No.6, No.7, No.8, No.9, No.10, No.11, No.12 – Lists of the luminaires – on CD		
Colour temperature (CCT).....	1000K		
	1800K		
	2000K		
	3000K		
	4000K		
	5700K		
Colour rendering index (CRI)	CRI>36		
	CRI>48		
	CRI>60		
	CRI>70		
	CRI>80		
Efficacy (lm/W)	BGP281... /BGP291.../BGP391... - 36 – 149		
	BGP282... /BGP292.../BGP392... - 40 – 152		
	BGP283... /BGP293.../BGP393... - 44 – 162		
	BGP284... /BGP294.../BGP394... - 46 – 160		
	For details see the Appendixes No.1, No.2, No.3, No.4, No.5, No.6, No.7, No.8, No.9, No.10, No.11, No.12 – Lists of the luminaires – on CD		
Lamp Type/Rating	PCBA LDGOSQ1.0 MICRO 006 OS3H2-17 740		
	PCBA LDGOSQ1.0 MICRO 006 OS3H2-17 830		
	PCBA LDGOSQ1.0 MICRO 006 OS3H2-17 757		
	PCBA LDGOSQ1.0 MICRO 010 OS3H1-18 740		
	PCBA LDGOSQ1.0 MICRO 010 OS3H1-18 757		
	PCBA LDGOSQ1.0 MICRO 020 OS3H1-18 740		
	PCBA LDGOSQ1.0 MICRO 020 OS3H1-18 757		
	PCBA LDGOSQ1.0 MICRO 020 OS3H1-18 610		
	PCBA LDGOSQ1.0 MICRO 030 OS3H1-18 740		
	PCBA LDGOSQ1.0 MICRO 030 OS3H1-18 757		
	PCBA LDGOSQ1.0 MINI 040 OS3H1-18 740		
	PCBA LDGOSQ1.0 MINI 040 OS3H1-18 757		
	PCBA LDGOSQ1.0 MINI 040 OS3H1-18 610		
	PCB LUMA MICRO 10 OSLONG3 WW		
	PCB LUMA MICRO 20 OSLONG3 WW		
	PCB LUMA MINI 30 OSLONG3 WW		
	PCB LUMA MINI 40 OSLONG3 WW		
	PCB LED PCBA LDGOSQ2.0 MICRO 06 O119H1 740 1.0;		
	PCB LED PCBA LDGOSQ2.0 MICRO 06 O118H1 830 1.0;		
	PCB LED PCBA LDGOSQ2.0 MICRO 06 O119H1 757 1.0;		
	PCB LED PCBA LDGOSQ2.0 MICRO 10 O119H1 740 1.0;		
	PCB LED PCBA LDGOSQ2.0 MICRO 10 O118H1 830 1.0;		
	PCB LED PCBA LDGOSQ2.0 MICRO 10 O119H1 757 1.0;		
	PCB LED PCBA LDGOSQ2.0 MICRO 20 O119H1 740 1.0;		
	PCB LED PCBA LDGOSQ2.0 MICRO 20 O118H1 830 1.0;		
	PCB LED PCBA LDGOSQ2.0 MICRO 20 O119H1 757 1.0;		
	PCB LED PCBA LDGOSQ2.0 MINI 30 O119H1 740 1.0;		
	PCB LED PCBA LDGOSQ2.0 MINI 30 O118H1 830 1.0;		
	PCB LED PCBA LDGOSQ2.0 MINI 30 O119H1 757 1.0;		
	PCB LED PCBA LDGOSQ2.0 MINI 40 O119H1 740 1.0;		
	PCB LED PCBA LDGOSQ2.0 MINI 40 O118H1 830 1.0;		
	PCB LED PCBA LDGOSQ2.0 MINI 40 O119H1 757 1.0;		
	PCB LED PCBA LDGOSQ2.0 MICRO 06 O219H1 722 1.0;		
	PCB LED PCBA LDGOSQ2.0 MICRO 06 O219H1 727 1.0;		

PD EPRS 003

Clause	Requirement + Test	Result - Remark	Verdict
	<p>PCB LED PCBA LDGOSQ2.0 MICRO 06 HP18H1 730 1.0; PCB LED PCBA LDGOSQ2.0 MICRO 10 O219H1 722 1.0; PCB LED PCBA LDGOSQ2.0 MICRO 10 O219H1 727 1.0; PCB LED PCBA LDGOSQ2.0 MICRO 10 HP18H1 730 1.0; PCB LED PCBA LDGOSQ2.0 MICRO 20 O219H1 722 1.0; PCB LED PCBA LDGOSQ2.0 MICRO 20 O219H1 727 1.0; PCB LED PCBA LDGOSQ2.0 MICRO 20 HP18H1 730 1.0; PCB LED PCBA LDGOSQ2.0 MINI 30 O219H1 722 1.0; PCB LED PCBA LDGOSQ2.0 MINI 30 O219H1 727 1.0; PCB LED PCBA LDGOSQ2.0 MINI 30 HP18H1 730 1.0; PCB LED PCBA LDGOSQ2.0 MINI 40 O219H1 722 1.0; PCB LED PCBA LDGOSQ2.0 MINI 40 O219H1 727 1.0; PCB LED PCBA LDGOSQ2.0 MINI 40 O119H1 730 1.0; PCB LED PCBA LDGOSQ2.0 MICRO 20 O118H1 610 1.0; PCB LED PCBA LDGOSQ2.0 MINI 40 O118H1 610 1.0.</p> <p>Luminaire (Type A, B, C): Type A - Luminaires using LED modules where compliance with EN 62717 has been proven</p> <p>Ambient Temperature Rating (t_a) : 25°C</p> <p>Temperature Rating (t_a): 15°C, 25°C, 35°C, 40°C, 45°C, 50°C</p>		

PD EPRS 003			
Clause	Requirement + Test	Result - Remark	Verdict
Test item particulars: Luminaires for road and street lighting			
Classification of installation and use: Normal			
Supply Connection: Connector:			
Possible test case verdicts: - test case does not apply to the test object : N/A - test object does meet the requirement : P (Pass) - test object does not meet the requirement : F (Fail)			
Testing :			
Date of receipt of test item..... : 09.03.2020			
Date (s) of performance of tests..... : 09.03.2020 – 21.04.2020			
General remarks: "(See Enclosure #)" refers to additional information appended to the report. "(See appended table)" refers to a table appended to the report. The requirements of EN 62722-1 apply in addition to EN 62722-2-1. The additional requirements for EN 62722-1 shall be reported in the separate TRF for this standard. Clause numbers between brackets refer to clauses in EN 62717 Shaded clauses are not requirements under the scope of PD EPRS003, for information only. Throughout this report a <input checked="" type="checkbox"/> comma / <input type="checkbox"/> point is used as the decimal separator.			
Name and address of factory (ies) : Signify Poland Sp. z o.o. O/Kętrzyn ul. Chrobrego 8, 11-400 Kętrzyn, Poland			

PD EPRS 003

Clause	Requirement + Test	Result - Remark	Verdict
--------	--------------------	-----------------	---------

General product information:

Name and address of the license holder:	Signify Poland Sp. z o.o., O/Kętrzyn, ul. Chrobrego 8, 11-400 Kętrzyn, Poland
Address of the factory:	Signify Poland Sp. z o.o., O/Kętrzyn, ul. Chrobrego 8, 11-400 Kętrzyn, Poland
Name of product:	Luminaires for road and street lighting
Type (model):	UniStreet gen2 BGP281 / BGP282 / BGP283 / BGP284; LumiStreet gen2 BGP291 / BGP292 / BGP293 / BGP294; LumiStreet Pro gen2 BGP391 / BGP392 / BGP393 / BGP394...II... - series (see below)
Trade mark :	PHILIPS
Technical data:	
rated voltage	~220-240V
rated current	max. 0,7 A
rated frequency	50/60Hz
number of lamps	6 – 160 LEDs
type of lamp	LED
protection against electric shock	class II
degree of protection	IP 66, IK08 (glass 4mm), IK09 (glass 6mm)
classification of the luminaires, with respect to the supporting material	normal
mains connections	connector
ta	15°C, 25°C, 35°C, 40°C, 45°C, 50°C

Choice sheet of the luminaires UniStreet gen2 BGP281 / BGP282 / BGP283 / BGP284, LumiStreet gen2 BGP291 / BGP292 / BGP293 / BGP294 and LumiStreet Pro gen2 BGP391 / BGP392 / BGP393 / BGP394...II...series: (NOTE: List of the luminaires – see the Appendixes No.1, No.2, No.3, No.4, No.5, No.6, No.7, No.8, No.9, No.10, No.11, No.12 – Lists of the luminaires – on CD)

Example of symbol:

BGP281 LW10 LED120-4S/740 PSU II DM 7045 MSP DDF1 D11 CTG-DGR SRG10 3183Y-3x0,75 B 60 CT

Designations used on the marking of luminaires (some designation may not appear in the name) :

1. **BGP281**
 - Code of the serie/size
(Mikro: 281,291,391; Mini:282,292,392; Medium: 283,293,393;
Large: 284,294,394)
2. **LW10**
 - LightWave (GPRS) option
LW10: telemanagement option with 10 years contract
LW5: telemanagement option with 5 years contract
LW1: telemanagement option with 1 year contract
LWCO: telemanagement option with signed service contract
LWFP: telemanagement option without contract
3. **LED6**
 - LEDGINE flux(x100) [lumen]
range: from LED6 to LED490
4. **4S**
 - Ledgine generation 4S when missing latest version applied
5. **757,740,830,420,518,610,
722,727,730**
 - LEDGINE version/color – CRI>70 - CW 5700K, NW 4000K, WW 2200K,
WW 2700K, WW 3000 , CRI>80 - WW 3000K, Clearstar NW 4000K,
Clearstar WW 3000K , Clearfield,
6. **PSD**
 - Driver type :
- PSU - Standard (non Dimmable)
- PSR - Dimmable driver 1-10V
- PSD - Dimmable driver DALI
- PSA - Dimmable driver AmpDim
- PSDD - Dimmable driver Dynadim integrated
- PSM - Power supply unit with coded mains interface
- PSD-SR - Power supply unit with DALI and SystemReady interface
7. **II**
 - Safety Class II
8. **DM**
 - Optic DMxx, DNxx, DWxx, DSxx, DPLxx, BLxx, DRMx, DRNx, DXxx – Road light distribution
9. **xxxx/xx-xxxx**
 - RAL Colour, Colour Choice AKZO, British standard colours, GR, DGR
10. **MSP**
 - Marine salt protected coating
11. **Dxx**
 - Light control Dxx,DDFxx, CLOxx – Different light settings (dimming time, communication type, constant light output ect) **ex1**. D9 –Dimming with external communication with DALI, **ex2**: CLO-DDF3- Dynadimmer with fixed presets version with CLO

PD EPRS 003			
Clause	Requirement + Test	Result - Remark	Verdict
12. D11		- Light regulation: D9: External dimming Dali D11: Line Switch through switch OFF D12: Line Switch through switch ON D13: Mains Dimming D18: Dynadimmer integrated (PSDD) D24: DynaDimmer int. DALI unprog. D28: Dimming via coded mains voltage	
13. CTG-DGR		- Socket: P1, P1-M, P1-5, P1-5 CP, P1-7, P1-7 CP, PZO-20, SRT, SRB, PSC, Sensor: PZC-35-0.5, PZC-55-0.5, PZC-70-0.5, PSC-35, PSC-55, PSC-70, CTGO-DGR, CTGO-35-DGR, CTGO-55-DGR, CTGO-70-DGR, CTGO-LGR, CTGO-35-LGR, CTGO-55-LGR, CTGO-70-LGR, CTGO-AC-LGR, CTGN-LGR, CTGN-35-LGR, CTGN-55-LGR, CTGN-70-LGR, CTGN-AC-LGR, EZR, WST2, WST7	
14. SRG10		- 10kV Surge Protection Device	
15. 3183Yxx/H07RN-Yx		- POWER CABLE H05-VV 3/5X...m in wide range of length (0,75;1,5; 2,5 mm2), POWER CABLE H07RN in wide range of length where Y is 2,3,4 or 5 core, cable types: H05VV-F, S05Z1Z1-R, H05RR-F, H07RN-F, H07BQ-F, H05VV-F Arctic, H05VV-U, RTPR with different length and finishing	
16. F		- Cable finish: - - Standard (no cable insulated) B - Protective earth wire insulated D - Gray wire insulated L - Protective earth wire, gray wire and black wire insulated H - Line wire black and protective earth wire insulated J - Line wire black, protective earth wire and gray wire insulated M - Line wire black, protective earth wire, gray wire and brown wire insulated	
17. 32/60S		- Spigot type: Side Entry : 32/48S, 48/60S,76S, 32/76S, 48/76S, 32/60S Post Top: 32/48P, 48/60P, 76P, 32/76P, 48/76P, 32/60P	
18. CT		- Type of packaging – carton box	

PD EPRS 003

Clause	Requirement + Test	Result - Remark	Verdict
--------	--------------------	-----------------	---------

Luminaire family	Series	Used LED module	LED module ratings	ENEC for luminaire	Report for module
UniStreet gen2... LumiStreet gen2... LumiStreet Pro gen2...	BGP281/BGP282/ BGP283/BGP284...II... - series BGP291/BGP292/ BGP293/ BGP294...II... - series BGP391/BGP392/ BGP393/BGP394...II... - series	PCBA LDGOSQ1.0 MICRO 006 OS3H2-17 740 PCBA LDGOSQ1.0 MICRO 006 OS3H2-17 830 PCBA LDGOSQ1.0 MICRO 006 OS3H2-17 757 PCBA LDGOSQ1.0 MICRO 010 OS3H1-18 740 PCBA LDGOSQ1.0 MICRO 010 OS3H1-18 757 PCBA LDGOSQ1.0 MICRO 020 OS3H1-18 740 PCBA LDGOSQ1.0 MICRO 020 OS3H1-18 757 PCBA LDGOSQ1.0 MICRO 020 OS3H1-18 610 PCBA LDGOSQ1.0 MICRO 030 OS3H1-18 740 PCBA LDGOSQ1.0 MICRO 030 OS3H1-18 757 PCBA LDGOSQ1.0 MINI 040 OS3H1-18 740 PCBA LDGOSQ1.0 MINI 040 OS3H1-18 757 PCBA LDGOSQ1.0 MINI 040 OS3H1-18 610	1,0A	0207/ENEC/19/ M1 dated 10.12.2019	PISEO R-1992- PHILIPS LEDGINE O - EPRS001 dated 20.04.2018 PISEO R-2372-1 V1 - PHILIPS LEDGINE O - EPRS001 dated 18.03.2019
		PCB LUMA MICRO 10 OSLONG3 WW PCB LUMA MICRO 20 OSLONG3 WW PCB LUMA MINI 30 OSLONG3 WW PCB LUMA MINI 40 OSLONG3 WW	1,0A		PISEO R-2507-1 V1-PHILIPS LEDGINE O- EPRS001 dated 04.04.2019
		PCB LED PCBA LDGOSQ2.0 MICRO 06 O119H1 740 1.0 PCB LED PCBA LDGOSQ2.0 MICRO 06 O118H1 830 1.0 PCB LED PCBA LDGOSQ2.0 MICRO 06 O119H1 757 1.0 PCB LED PCBA LDGOSQ2.0 MICRO 10 O119H1 740 1.0 PCB LED PCBA LDGOSQ2.0 MICRO 10 O118H1 830 1.0 PCB LED PCBA LDGOSQ2.0 MICRO 10 O119H1 757 1.0 PCB LED PCBA LDGOSQ2.0 MICRO 20 O119H1 740 1.0 PCB LED PCBA LDGOSQ2.0 MICRO 20 O118H1 830 1.0 PCB LED PCBA LDGOSQ2.0 MICRO 20 O119H1 757 1.0 PCB LED PCBA LDGOSQ2.0 MINI 30 O119H1 740 1.0 PCB LED PCBA LDGOSQ2.0 MINI 30 O118H1 830 1.0 PCB LED PCBA LDGOSQ2.0 MINI 30 O119H1 757 1.0 PCB LED PCBA LDGOSQ2.0 MINI 40 O119H1 740 1.0 PCB LED PCBA LDGOSQ2.0 MINI 40 O118H1 830 1.0 PCB LED PCBA LDGOSQ2.0 MINI 40 O119H1 757 1.0 PCB LED PCBA LDGOSQ2.0 MICRO 06 O219H1 722 1.0 PCB LED PCBA LDGOSQ2.0 MICRO 06 O219H1 727 1.0 PCB LED PCBA LDGOSQ2.0 MICRO 06 HP18H1 730 1.0 PCB LED PCBA LDGOSQ2.0 MICRO 10 O219H1 722 1.0 PCB LED PCBA LDGOSQ2.0 MICRO 10 O219H1 727 1.0 PCB LED PCBA LDGOSQ2.0 MICRO 10 HP18H1 730 1.0 PCB LED PCBA LDGOSQ2.0 MICRO 20 O219H1 722 1.0 PCB LED PCBA LDGOSQ2.0 MICRO 20 O219H1 727 1.0 PCB LED PCBA LDGOSQ2.0 MICRO 20 HP18H1 730 1.0 PCB LED PCBA LDGOSQ2.0 MINI 30 O219H1 722 1.0 PCB LED PCBA LDGOSQ2.0 MINI 30 O219H1 727 1.0 PCB LED PCBA LDGOSQ2.0 MINI 30 HP18H1 730 1.0 PCB LED PCBA LDGOSQ2.0 MINI 40 O219H1 722 1.0 PCB LED PCBA LDGOSQ2.0 MINI 40 O219H1 727 1.0 PCB LED PCBA LDGOSQ2.0 MINI 40 O119H1 730 1.0 PCB LED PCBA LDGOSQ2.0 MICRO 20 O118H1 610 1.0 PCB LED PCBA LDGOSQ2.0 MINI 40 O118H1 610 1.0	1,0A		PISEO R-2255-1 V1-PHILIPS LEDGINE O - EPRS001 dated 18.10.2018 PISEO R-2372-1 V1 - PHILIPS LEDGINE O - EPRS001 dated 18.03.2019

Possible configurations of luminaires and more information - see the Appendixes No. 1, No.2, No.3, No.4, No.5, No.6, No.7, No.8, No.9, No.10, No.11, No.12 – Lists of the luminaires - on CD (data received from the manufacturer)

After construction review of the luminaires family and taking into account the clause 3.2 of the standard EN 62722-2-1 for test was chosen model:

LumiStreet Pro gen2 Micro BGP391 LW1 LED56-4S/740 II DM1 DDF1 D18 CTGO-DGR SRG10 48/60S PLS with Ledgine PCBA LDGOSQ2.0 MICRO **20** O119H1 **740** 1.0:

- LED56-4S = 4872 lm,
- ≥70 CRI,
- 740= 4000K.

LumiStreet Pro gen2 Mini BGP392 LED100-4S/740 II DM10 SRT SRB 76S PLS with Ledgine PCBA LDGOSQ2.0 MINI **40** O119H1 **740** 1.0:

- LED100-4S = 8700 lm,
- ≥70 CRI
- 740= 4000K.

LumiStreet Pro gen2 Large BGP394 LED400-4S/740 II DM10 D11 P1-7-CP SRG10 32/48S PLS with Ledgine PCBA LDGOSQ2.0 MINI **40** O119H1 **740** 1.0 x4:

- LED400-4S = 34000 lm,
- ≥70 CRI,
- 740= 4000K.

PD EPRS 003			
Clause	Requirement + Test	Result - Remark	Verdict
4	PRODUCT INFORMATION		P
	Rated input power (in W)	BGP391 LW1 LED56-4S/740 II DM1 DDF1 D18 CTGO-DGR SRG10 48/60S PLS – 36,5 W BGP 392 LED100-4S/740 II DM10 SRT SRB 76S PLS – 61,0 W BGP394 LED400-4S/740 II DM10 D11 P1-7-CP SRG10 32/48S PLS – 240W	P
c	Rated luminous flux (in lm)	BGP391 LW1 LED56-4S/740 II DM1 DDF1 D18 CTGO-DGR SRG10 48/60S PLS – 4872lm BGP 392 LED100-4S/740 II DM10 SRT SRB 76S PLS – 8700lm BGP394 LED400-4S/740 II DM10 D11 P1-7-CP SRG10 32/48S PLS – 34000lm	P
g	Rated chromaticity coordinate initial values only. (Maintained values not applicable for PD EPRS 003)		N/A
h	Correlated colour temperature (CCT in K)	4000K	P
i	Rated Colour Rendering Index (CRI)	CRI>70	P
j	Ambient temperature (t _a) for the luminaire	25°C	P
k	LED luminaire efficacy (lm/W)	BGP391 LW1 LED56-4S/740 II DM1 DDF1 D18 CTGO-DGR SRG10 48/60S PLS – 133 lm/W BGP 392 LED100-4S/740 II DM10 SRT SRB 76S PLS – 143 lm/W BGP394 LED400-4S/740 II DM10 D11 P1-7-CP SRG10 32/48S PLS – 142 lm/W	P
l	Ageing time (h), if different to 0 h		N/A

6	TEST CONDITIONS		P
6.1	General test conditions		P
6.2	Luminaires with LED modules in compliance with EN 62717 (Type A)		P
6.2.1	Testing where reliability data of components available <i>Note: There is no option for this at present</i>		N/A
6.2.2	Testing where no reliability data of components available		N/A
6.2.3	Creation of module families to reduce test effort		N/A
6.3	Luminaires with LED modules not in compliance with EN 62717 (Type B)		N/A
6.4	Performance requirements – Selection of required tests		P

*Corrected section 6.2 and 6.3 according EPRS_003b rev2 clean.

Date of the correction 27.05.2020. K. Lisowski



Disclaimer: This document is controlled and has been released electronically.
Only the version on the ETICS Website is the current document version

PD EPRS 003			
Clause	Requirement + Test	Result - Remark	Verdict

7	TOTAL INPUT POWER		P
	Rated Luminaire Power (W).... :	BGP391 LW1 LED56-4S/740 II DM1 DDF1 D18 CTGO-DGR SRG10 48/60S PLS – 36,5 W BGP 392 LED100-4S/740 II DM10 SRT SRB 76S PLS – 61,0 W BGP394 LED400-4S/740 II DM10 D11 P1-7-CP SRG10 32/48S PLS – 240,0 W	P
	Measured Power (W)..... :	BGP391 LW1 LED56-4S/740 II DM1 DDF1 D18 CTGO-DGR SRG10 48/60S PLS – 35,7 W BGP 392 LED100-4S/740 II DM10 SRT SRB 76S PLS – 60,1 W BGP394 LED400-4S/740 II DM10 D11 P1-7-CP SRG10 32/48S PLS – 249,4 W	
(7.1)	The initial power consumed is less than 110 % rated power	BGP391 LW1 LED56-4S/740 II DM1 DDF1 D18 CTGO-DGR SRG10 48/60S PLS – 97,8% BGP 392 LED100-4S/740 II DM10 SRT SRB 76S PLS – 98,5% BGP394 LED400-4S/740 II DM10 D11 P1-7-CP SRG10 32/48S PLS – 103,9%	P

8	LIGHT OUTPUT		P
8.1 (8.1)	Luminous flux	BGP391 LW1 LED56-4S/740 II DM1 DDF1 D18 CTGO-DGR SRG10 48/60S PLS – 4811lm	
	Measured luminous flux (lm):... :	BGP 392 LED100-4S/740 II DM10 SRT SRB 76S PLS – 8626lm BGP394 LED400-4S/740 II DM10 D11 P1-7-CP SRG10 32/48S PLS – 33803lm	
	Rated luminous flux (lm):..... :	BGP391 LW1 LED56-4S/740 II DM1 DDF1 D18 CTGO-DGR SRG10 48/60S PLS – 4872lm BGP 392 LED100-4S/740 II DM10 SRT SRB 76S PLS – 8700lm BGP394 LED400-4S/740 II DM10 D11 P1-7-CP SRG10 32/48S PLS – 34000lm	P
	The initial luminous flux of a LED luminaire is more than 90% of the rated lumen output	BGP391 LW1 LED56-4S/740 II DM1 DDF1 D18 CTGO-DGR SRG10 48/60S PLS – 98,7% BGP 392 LED100-4S/740 II DM10 SRT SRB 76S PLS – 99,2% BGP394 LED400-4S/740 II DM10 D11 P1-7-CP SRG10 32/48S PLS – 99,4%	P
8.2 (8.2)	Luminous distribution, peak, beam		P
8.2.1 (8.2.1)	General	LED module without directional distribution	P
8.2.2 (8.2.2)	Measurement	Not declared by manufacturer	N/A
8.2.3 (8.2.3)	Luminous intensity distribution	Not declared by manufacturer	N/A
8.2.4 (8.2.4)	Peak intensity value	Not declared by manufacturer	N/A
8.2.5 (8.2.5)	Beam angle value	Not declared by manufacturer	N/A

PD EPRS 003			
Clause	Requirement + Test	Result - Remark	Verdict
8.3	Measured efficacy Measured efficacy (lm/W): Rated efficacy (lm/W):	BGP391 LW1 LED56-4S/740 II DM1 DDF1 D18 CTGO-DGR SRG10 48/60S PLS – 131 lm/W BGP 392 LED100-4S/740 II DM10 SRT SRB 76S PLS – 141 lm/W BGP394 LED400-4S/740 II DM10 D11 P1-7-CP SRG10 32/48S PLS – 135,5 lm/W BGP391 LW1 LED56-4S/740 II DM1 DDF1 D18 CTGO-DGR SRG10 48/60S PLS – 133 lm/W BGP 392 LED100-4S/740 II DM10 SRT SRB 76S PLS – 143 lm/W BGP394 LED400-4S/740 II DM10 D11 P1-7-CP SRG10 32/48S PLS – 142 lm/W	P
	The efficacy of LED luminaire is more than 80% of the rated efficacy.....:	BGP391 LW1 LED56-4S/740 II DM1 DDF1 D18 CTGO-DGR SRG10 48/60S PLS – 98,5% BGP 392 LED100-4S/740 II DM10 SRT SRB 76S PLS – 98,6% B BGP394 LED400-4S/740 II DM10 D11 P1-7-CP SRG10 32/48S PLS – 95,4%	P

9	CHROMATICITY CO-ORDINATES, CORRELATED COLOUR TEMPERATURE (CCT) AND COLOUR RENDERING		P
9.1 (9.1)	Chromaticity co-ordinates Initial chromaticity co-ordinates only (Maintained values not applicable for PD EPRS 003)	0.38 *)	P
9.2 (9.2)	Correlated colour temperature (CCT) Initial correlated colour temperature only (Maintained values not applicable for PD EPRS 003)	4000K *)	P
9.3 (9.3)	Colour rendering index (CRI) Initial colour rendering index only (CRI) (Maintained values not applicable for PD EPRS 003)	>70 *)	P

*) Acc.to the manufacturer declaration

10	LED LUMINAIRE LIFE		N/A
10.1 (10.1)	General Note: No requirement, information only	Not required for luminaire type A	N/A
10.3	Endurance tests		N/A
(10.3.1)	General		N/A
(10.3.2)	Temperature cycling test	Type A luminaire	N/A
	Option chosen: 10K/mn or 1K/mn	K/mn	N/A
(10.3.3)	Supply switching test		N/A
	Number of cycles performed	_____ cycles	N/A
(10.3.4)	Accelerated operation life test Note: this test of EN 62717 is modified by PD EPRS 001	Type A luminaire	N/A

PD EPRS 003			
Clause	Requirement + Test	Result - Remark	Verdict

11	VERIFICATION		N/A
	Note: Not applicable. The directions of EPRS 003 are to be followed		N/A

PD EPRS 003

Clause	Requirement + Test	Result - Remark	Verdict
--------	--------------------	-----------------	---------

ANNEX 1	TABLE: List of Drivers and Led modules.					P
Object / part No.	Code	Manufacturer/ trademark	Type / model	Technical data	Standard	Mark(s) of conformity ¹⁾
Electronic led driver	A	PHILIPS LIGHTING ELECTRONICS	Xi FP 22W 0.3-1.0A SNLDAE S175 230V sXt	220-240V 50...60 Hz, 0.3-1.0A Tc=85 °	EN 61347-1, EN 61347-2-13	ENEC 05
Electronic led driver	A	PHILIPS LIGHTING ELECTRONICS	Xi FP 40W 0.2-0.7A SNLADE S175 sXt	220-240VAC, 0,21A, 50/60Hz	EN 61347-1, EN 61347-2-13	ENEC05
Electronic led driver	A	PHILIPS LIGHTING ELECTRONICS	Xi FP 75W 0.2-0.7A SNLDAE 230V S240 sXt	220-240V 50...60 Hz, 0.2-0.7A Tc=85 °	EN 61347-1, EN 61347-2-13	ENEC 05
Electronic led driver	A	PHILIPS LIGHTING ELECTRONICS	Xi FP 110W 0.2-0.7A SNLDAE 230V C133 sXt	220-240V 50...60 Hz, 0.2-0.7A Tc=85 °	EN 61347-1, EN 61347-2-13	ENEC 05
Electronic led driver	A	PHILIPS LIGHTING ELECTRONICS	Xi FP 150W 0.2-0.7A SNLDAE 230V S240 sXt	220-240V 50...60 Hz, 0.2-0.7A Tc=90 °	EN 61347-1, EN 61347-2-13	ENEC 05
Electronic led driver	A	PHILIPS LIGHTING ELECTRONICS	Xi FP 40W 0.2-0.7A SNLCDAE 230V S175 sXt	220-240V 50...60 Hz, 0.2-0.7A, Tc=85°	EN 61347-1 EN 61347-2-13	ENEC 05
Electronic led driver	A	PHILIPS LIGHTING ELECTRONICS	Xi FP 75W 0.2-0.7A SNLCDAE 230V S240 sXt	220-240V, 50...60 Hz, 0.2-0.7A, Tc=85°C	EN 61347-1 EN 61347-2-13	ENEC 05
Electronic led driver	A	PHILIPS LIGHTING ELECTRONICS	Xi FP 110W 0.2-0.7A SNLCDAE 230V C133 sXt	220-240V, 50...60 Hz, 0.2-0.7A, Tc=85°C	EN 61347-1 EN 61347-2-13	ENEC 05
Electronic led driver	A	PHILIPS LIGHTING ELECTRONICS	Xi FP 150W 0.2-0.7A SNLCDAE 230V S240 sXt	220-240V, 50...60 Hz, 0.2-0.7A, Tc=85°C	EN 61347-1 EN 61347-2-13	ENEC 05
Electronic led driver	A	PHILIPS LIGHTING ELECTRONICS	Xi SR 22W 0.2-0.7A SNEMP 230V C133	220-240V 50...60 Hz, 0.2-0.7A Tc=85°	EN 61347-1 EN 61347-2-13	ENEC 05
Electronic led driver	A	PHILIPS LIGHTING ELECTRONICS	Xi SR 40W 0.2-0.7A SNEMP 230V C133	220-240VAC; 0,2-0,7A; 50/60Hz	EN 61347-1, EN 61347-2-13	ENEC05
Electronic led driver	A	PHILIPS LIGHTING ELECTRONICS	Xi SR 75W 0.2-0.7A SNEMP 230V S240	220-240V 50...60 Hz, 0.2-0.7A Tc=90 °	EN 61347-1, EN 61347-2-13	ENEC05
Electronic led driver	A	PHILIPS LIGHTING ELECTRONICS	Xi SR 110W 0.2-0.7A SNEMP 230V C150 sXt	220-240V 50...60 Hz, 0.2-0.7A Tc=90 °	EN 61347-1, EN 61347-2-13	ENEC05
Electronic led driver	A	PHILIPS LIGHTING ELECTRONICS	Xi SR 150W 0.2-0.7A SNEMP 230V S240	220-240V 50...60 Hz, 0.2-0.7A Tc=90 °	EN 61347-1, EN 61347-2-13	ENEC05
PCB LED	B	PHILIPS/Opulent	PCBA LDGOSQ1.0 MICRO 006 OS3H1-18 740	1.0A, Tc65	EN 62031	TRF LCIE 143254-689379B
PCB LED	B	PHILIPS/Opulent	PCBA LDGOSQ1.0 MICRO 006 OS3H2-17 830	1.0A, Tc65	EN 62031	TRF LCIE 143254-689379B
PCB LED	B	PHILIPS/Opulent	PCBA LDGOSQ1.0 MICRO 006 OS3H2-17 757	1.0A, Tc65	EN 62031	TRF LCIE 143254-689379B

PD EPRS 003						
Clause	Requirement + Test			Result - Remark	Verdict	
PCB LED	B	PHILIPS/ Opulent	PCBA LDGOSQ1.0 MICRO 010 OS3H1-18 740	1.0A, Tc65	EN 62031	TRF LCIE 143254- 689379B
PCB LED	B	PHILIPS/ Opulent	PCBA LDGOSQ1.0 MICRO 010 OS3H1-18 757	1.0A, Tc65	EN 62031	TRF LCIE 143254- 689379B
PCB LED	B	PHILIPS/ Opulent	PCBA LDGOSQ1.0 MICRO 020 OS3H1-18 740	1.0A, Tc65	EN 62031	TRF LCIE 143254- 689379B
PCB LED	B	PHILIPS/ Opulent	PCBA LDGOSQ1.0 MICRO 020 OS3H1-18 757	1.0A, Tc65	EN 62031	TRF LCIE 143254- 689379B
PCB LED	B	PHILIPS/ Opulent	PCBA LDGOSQ1.0 MICRO 020 OS3H1-18 610	1.0A, Tc65	EN 62031	TRF LCIE 143254- 689379B
PCB LED	B	PHILIPS/ Opulent	PCBA LDGOSQ1.0 MICRO 030 OS3H1-18 740	1.0A, Tc65	EN 62031	TRF LCIE 143254- 689379B
PCB LED	B	PHILIPS/ Opulent	PCBA LDGOSQ1.0 MICRO 030 OS3H1-18 757	1.0A, Tc65	EN 62031	TRF LCIE 143254- 689379B
PCB LED	B	PHILIPS/ Opulent	PCBA LDGOSQ1.0 MINI 040 OS3H1- 18 740	0.7A, Tc65	EN 62031	TRF LCIE 143254- 689379B
PCB LED	B	PHILIPS/ Opulent	PCBA LDGOSQ1.0 MINI 040 OS3H1- 18 757	0.7A, Tc65	EN 62031	TRF LCIE 143254- 689379B
PCB LED	B	PHILIPS/ Opulent	PCBA LDGOSQ1.0 MINI 040 OS3H1- 18 610	0.7A, Tc65	EN 62031	TRF LCIE 143254- 689379B
PCB LED	B	PHILIPS/ Opulent	PCB LUMA MICRO 10 OSLONG3 WW	1.0A, Tc65	EN 62031	TRF LCIE 143254- 689379B
PCB LED	B	PHILIPS/ Opulent	PCB LUMA MICRO 20 OSLONG3 WW	1.0A, Tc65	EN 62031	TRF LCIE 143254- 689379B
PCB LED	B	PHILIPS/ Opulent	PCB LUMA MINI 30 OSLONG3 WW	1.0A, Tc65	EN 62031	TRF LCIE 143254- 689379B
PCB LED	B	PHILIPS/ Opulent	PCB LUMA MINI 40 OSLONG3 WW	1.0A, Tc65	EN 62031	TRF LCIE 143254- 689379B
PCB LED	B	PHILIPS/ Opulent	PCBA LDGOSQ2.0 MICRO 06 O119H1 740 1.0	1.0A Tc85	IEC 62031	TRF LCIE 157812-728186
PCB LED	B	PHILIPS/ Opulent	PCBA LDGOSQ2.0 MICRO 06 O118H1 830 1.0	1.0A Tc85	IEC 62031	TRF LCIE 157812-728186
PCB LED	B	PHILIPS/ Opulent	PCBA LDGOSQ2.0 MICRO 06 O119H1 757 1.0	1.0A Tc85	IEC 62031	TRF LCIE 157812-728186
PCB LED	B	PHILIPS/ Opulent	PCBA LDGOSQ2.0 MICRO 10 O119H1 740 1.0	1.0A Tc85	IEC 62031	TRF LCIE 157812-728186

PD EPRS 003						
Clause	Requirement + Test			Result - Remark	Verdict	
PCB LED	B	PHILIPS/ Opulent	PCBA LDGOSQ2.0 MICRO 10 O118H1 830 1.0	1.0A Tc85	IEC 62031	TRF LCIE 157812-728186
PCB LED	B	PHILIPS/ Opulent	PCBA LDGOSQ2.0 MICRO 10 O119H1 757 1.0	1.0A Tc85	IEC 62031	TRF LCIE 157812-728186
PCB LED	B	PHILIPS/ Opulent	PCBA LDGOSQ2.0 MICRO 20 O119H1 740 1.0	1.0A Tc85	IEC 62031	TRF LCIE 157812-728186
PCB LED	B	PHILIPS/ Opulent	PCBA LDGOSQ2.0 MICRO 20 O118H1 830 1.0	1.0A Tc85	IEC 62031	TRF LCIE 157812-728186
PCB LED	B	PHILIPS/ Opulent	PCBA LDGOSQ2.0 MICRO 20 O119H1 757 1.0	1.0A Tc85	IEC 62031	TRF LCIE 157812-728186
PCB LED	B	PHILIPS/ Opulent	PCBA LDGOSQ2.0 MINI 30 O119H1 740 1.0	1.0A Tc85	IEC 62031	TRF LCIE 157812-728186
PCB LED	B	PHILIPS/ Opulent	PCBA LDGOSQ2.0 MINI 30 O118H1 830 1.0	1.0A Tc85	IEC 62031	TRF LCIE 157812-728186
PCB LED	B	PHILIPS/ Opulent	PCBA LDGOSQ2.0 MINI 30 O119H1 757 1.0	1.0A Tc85	IEC 62031	TRF LCIE 157812-728186
PCB LED	B	PHILIPS/ Opulent	PCBA LDGOSQ2.0 MINI 40 O119H1 740 1.0	1.0A Tc85	IEC 62031	TRF LCIE 157812-728186
PCB LED	B	PHILIPS/ Opulent	PCBA LDGOSQ2.0 MINI 40 O118H1 830 1.0	1.0A Tc85	IEC 62031	TRF LCIE 157812-728186
PCB LED	B	PHILIPS/ Opulent	PCBA LDGOSQ2.0 MINI 40 O119H1 757 1.0	1.0A Tc85	IEC 62031	TRF LCIE 157812-728186
PCB LED	B	PHILIPS/ Opulent	PCBA LDGOSQ2.0 MICRO 20 O118H1 610 1.0	1.0A Tc85	IEC 62031	TRF LCIE 157812-728186
PCB LED	B	PHILIPS/ Opulent	PCBA LDGOSQ2.0 MINI 40 O118H1 610 1.0	1.0A Tc85	IEC 62031	TRF LCIE 157812-728186
PCB LED	B	PHILIPS/ Opulent	PCBA LDGOSQ2.0 MICRO 06 O219H1 722 1.0	1.0A Tc85	IEC 62031	TRF LCIE 157812-728186
PCB LED	B	PHILIPS/ Opulent	PCBA LDGOSQ2.0 MICRO 06 O219H1 727 1.0	1.0A Tc85	IEC 62031	TRF LCIE 157812-728186
PCB LED	B	PHILIPS/ Opulent	PCBA LDGOSQ2.0 MICRO 06 HP18H1 730 1.0	1.0A Tc85	IEC 62031	TRF LCIE 157812-728186
PCB LED	B	PHILIPS/ Opulent	PCBA LDGOSQ2.0 MICRO 10 O219H1 722 1.0	1.0A Tc85	IEC 62031	TRF LCIE 157812-728186
PCB LED	B	PHILIPS/ Opulent	PCBA LDGOSQ2.0 MICRO 10 O219H1 727 1.0	1.0A Tc85	IEC 62031	TRF LCIE 157812-728186

PD EPRS 003						
Clause	Requirement + Test			Result - Remark	Verdict	
PCB LED	B	PHILIPS/ Opulent	PCBA LDGOSQ2.0 MICRO 10 HP18H1 730 1.0	1.0A Tc85	IEC 62031	TRF LCIE 157812-728186
PCB LED	B	PHILIPS/ Opulent	PCBA LDGOSQ2.0 MICRO 20 O219H1 722 1.0	1.0A Tc85	IEC 62031	TRF LCIE 157812-728186
PCB LED	B	PHILIPS/ Opulent	PCBA LDGOSQ2.0 MICRO 20 O219H1 727 1.0	1.0A Tc85	IEC 62031	TRF LCIE 157812-728186
PCB LED	B	PHILIPS/ Opulent	PCBA LDGOSQ2.0 MICRO 20 HP18H1 730 1.0	1.0A Tc85	IEC 62031	TRF LCIE 157812-728186
PCB LED	B	PHILIPS/ Opulent	PCBA LDGOSQ2.0 MINI 30 O219H1 722 1.0	1.0A Tc85	IEC 62031	TRF LCIE 157812-728186
PCB LED	B	PHILIPS/ Opulent	PCBA LDGOSQ2.0 MINI 30 O219H1 727 1.0	1.0A Tc85	IEC 62031	TRF LCIE 157812-728186
PCB LED	B	PHILIPS/ Opulent	PCBA LDGOSQ2.0 MINI 30 HP18H1 730 1.0	1.0A Tc85	IEC 62031	TRF LCIE 157812-728186
PCB LED	B	PHILIPS/ Opulent	PCBA LDGOSQ2.0 MINI 40 O219H1 722 1.0	1.0A Tc85	IEC 62031	TRF LCIE 157812-728186
PCB LED	B	PHILIPS/ Opulent	PCBA LDGOSQ2.0 MINI 40 O219H1 727 1.0	1.0A Tc85	IEC 62031	TRF LCIE 157812-728186
PCB LED	B	PHILIPS/ Opulent	PCBA LDGOSQ2.0 MINI 40 O119H1 730 1.0	1.0A Tc85	IEC 62031	TRF LCIE 157812-728186
Full list of components - see TEST REPORT BS-3-060-B-19-M1						

The codes above have the following meaning:

- A - The component is replaceable with another one, also certified, with equivalent characteristics
- B - The component is replaceable if authorized by the ITE PREDOM Division
- C - Integrated component tested together with the appliance
- D - Alternative component

PD EPRS 003			
Clause	Requirement + Test	Result - Remark	Verdict

List of test equipment used:

Clause	Measurement/Testing	Testing/measuring equipment/material used(Equipment ID)	Range used	Last calibration date	Calibration due date
4, 7	Multimeter	K-25	0-300V, 0-1A, 0-1000W	27.08.2019	27.08.2020
4, 8	Goniometer	U-106	-	15.10.2019	14.10.2020
4	Thermometer	P-427	0-100°C	19.08.2019	18.08.2020

PD EPRS 003

Clause	Requirement + Test	Result - Remark	Verdict
--------	--------------------	-----------------	---------

PHOTOS

LumiStreet Pro gen2 Micro BGP391 LW1 LED56-4S/740 II DM1 DDF1 D18 CTGO-DGR SRG10 48/60S PLS



PD EPRS 003

Clause	Requirement + Test	Result - Remark	Verdict
--------	--------------------	-----------------	---------

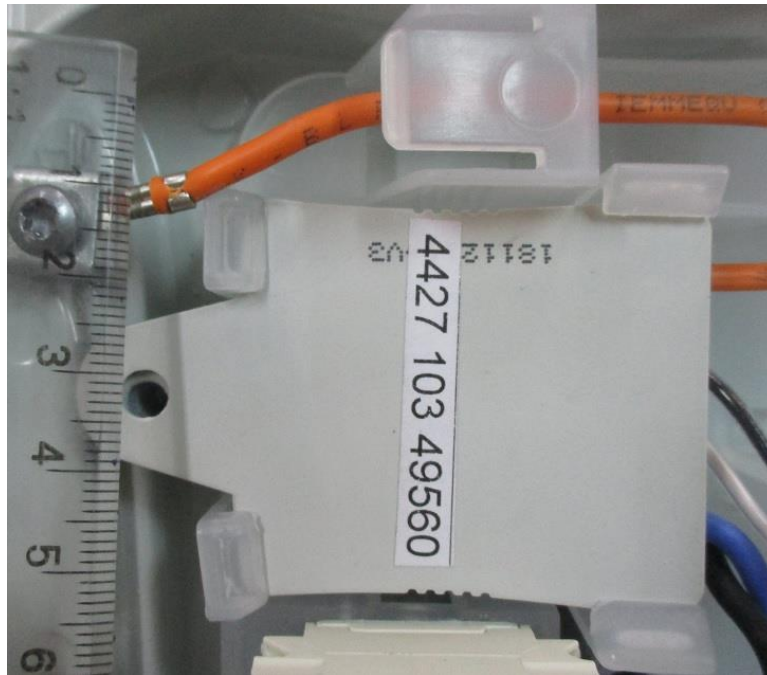


PD EPRS 003

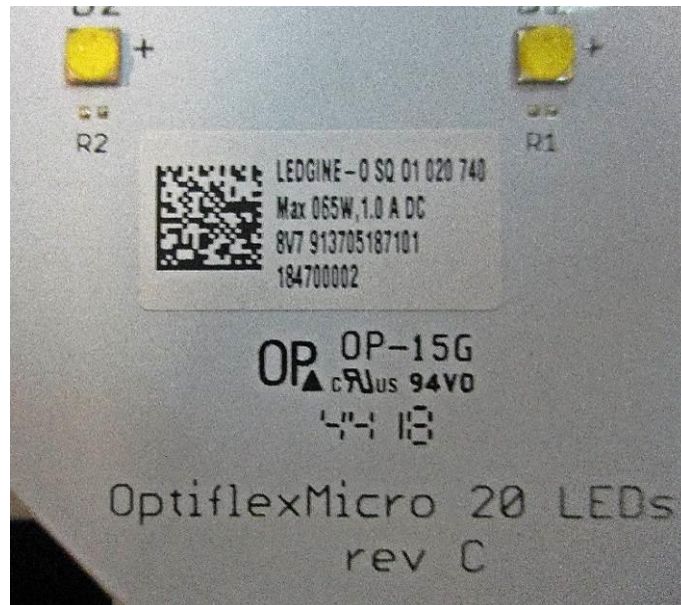
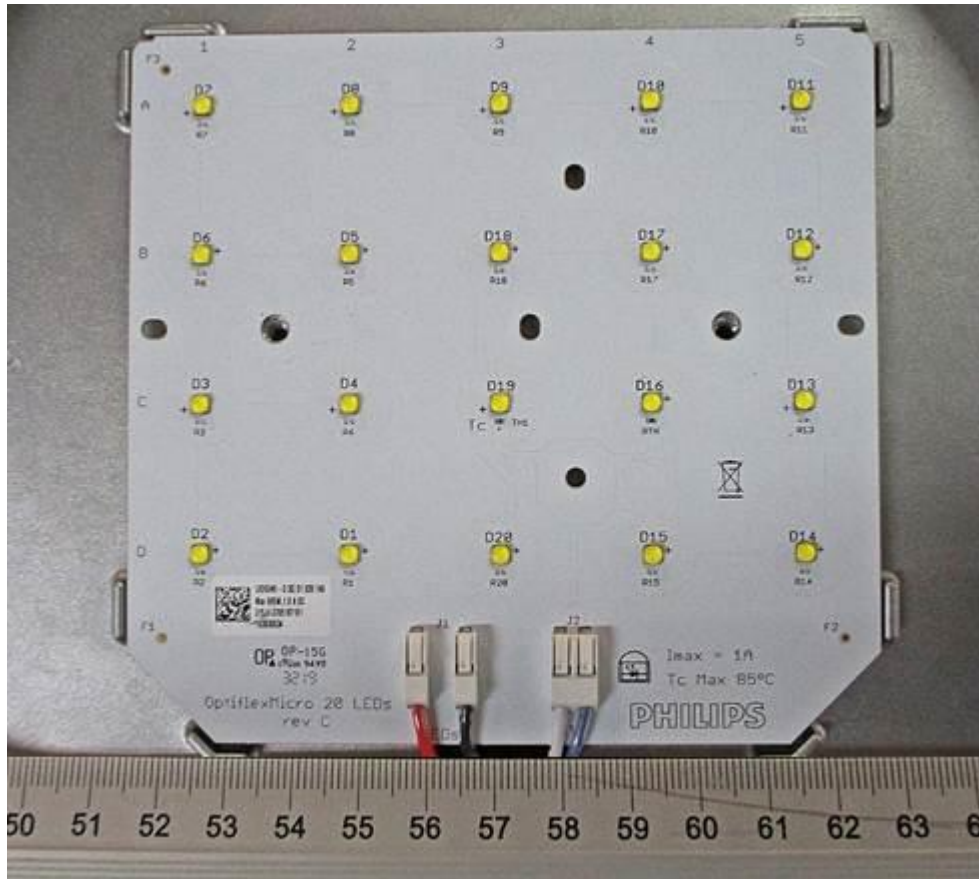
Clause	Requirement + Test	Result - Remark	Verdict
--------	--------------------	-----------------	---------



PD EPRS 003			
Clause	Requirement + Test	Result - Remark	Verdict



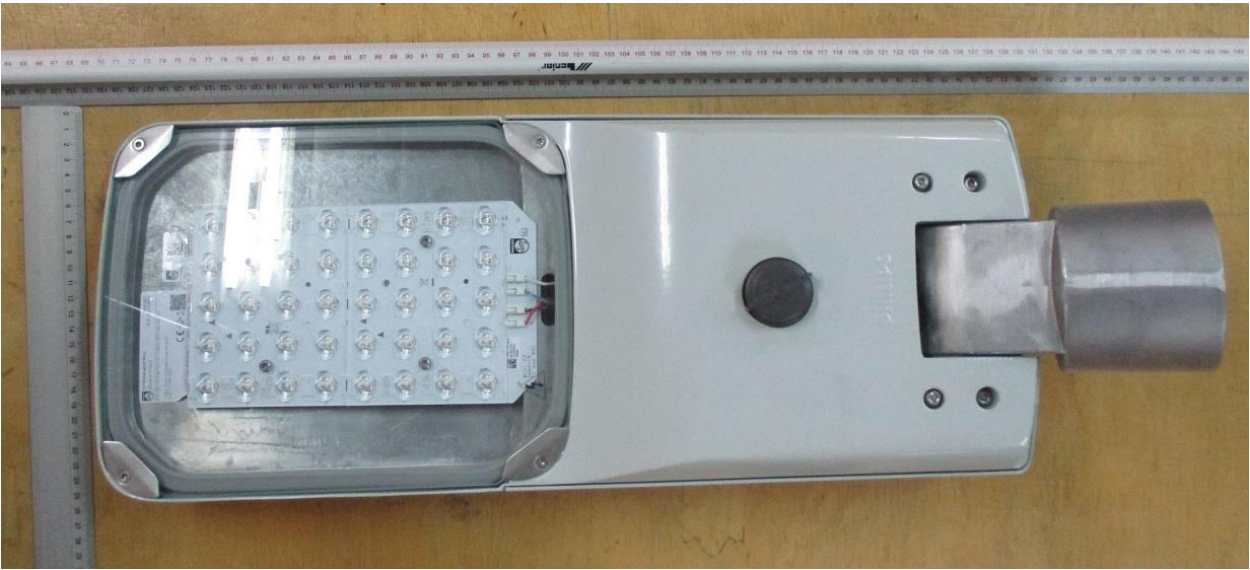
PD EPRS 003			
Clause	Requirement + Test	Result - Remark	Verdict



PD EPRS 003

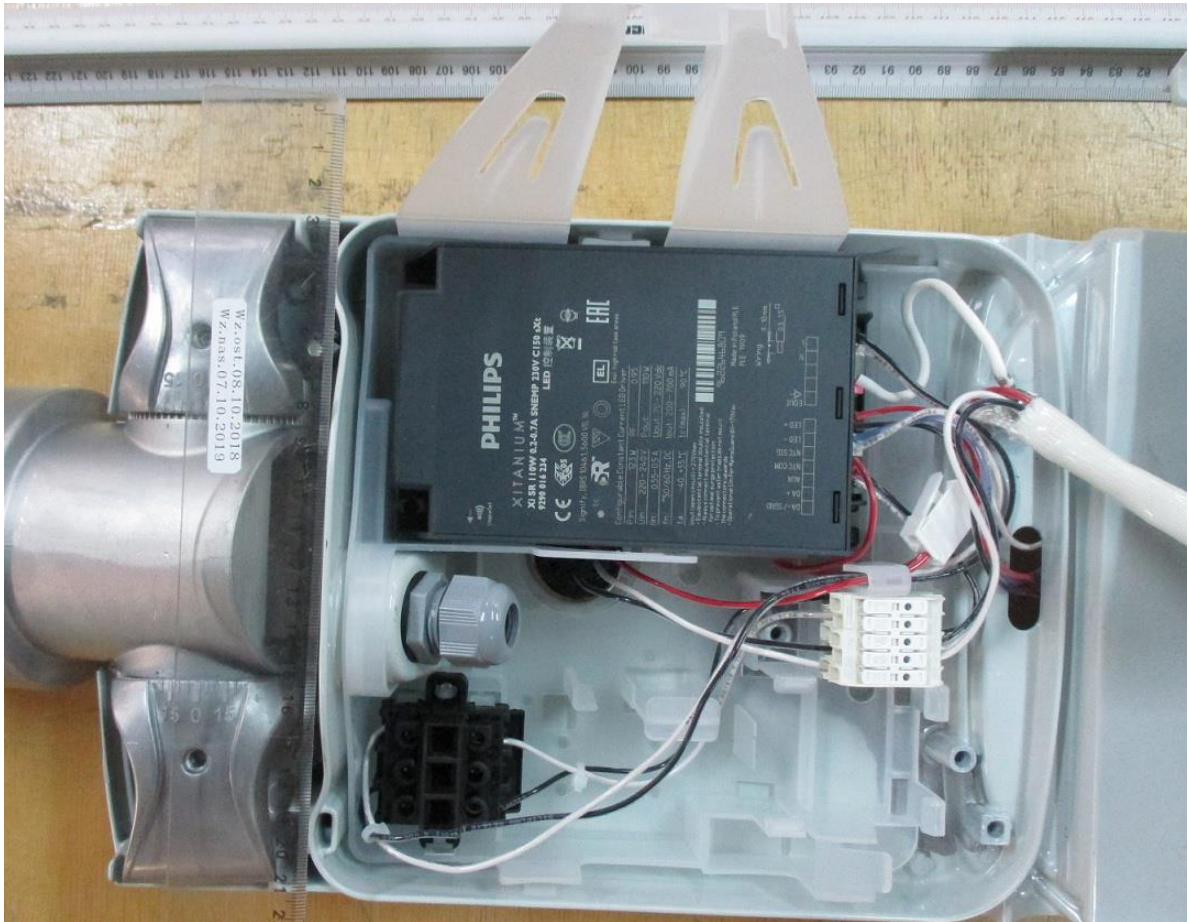
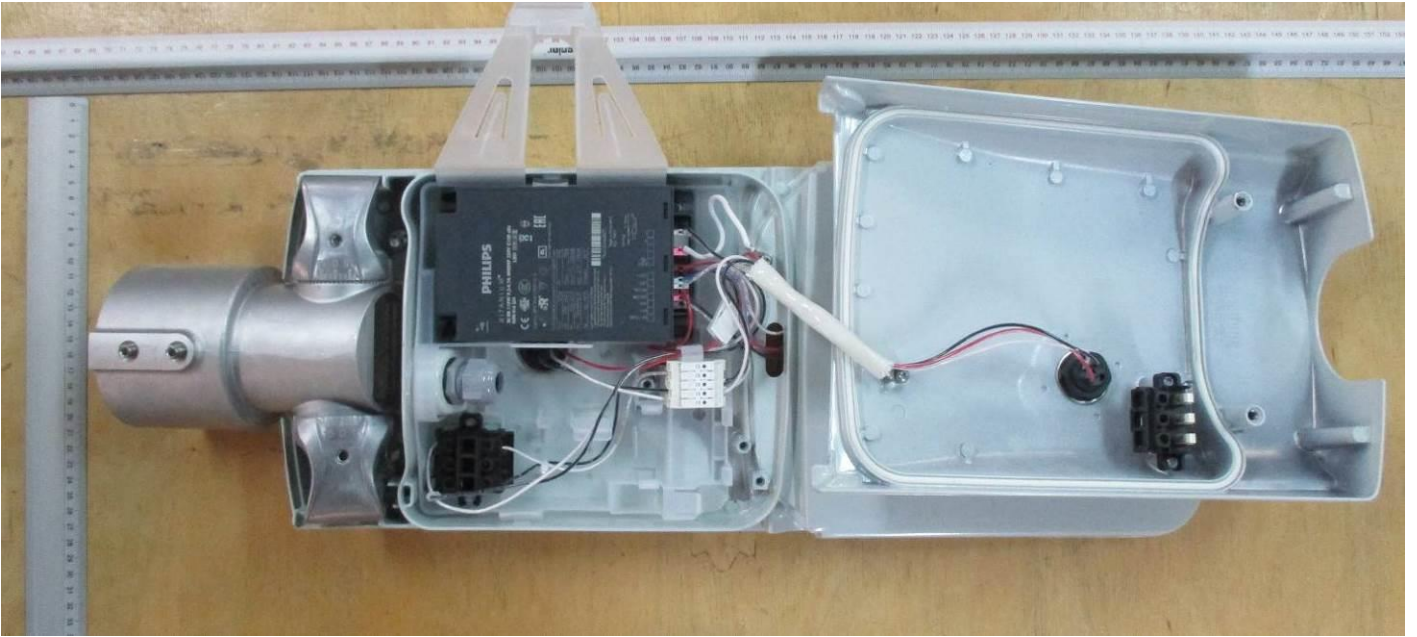
Clause	Requirement + Test	Result - Remark	Verdict
--------	--------------------	-----------------	---------

LumiStreet Pro gen2 Mini BGP 392 LED100-4S/740 II DM10 SRT SRB 76S PLS



PD EPRS 003

Clause	Requirement + Test	Result - Remark	Verdict
--------	--------------------	-----------------	---------

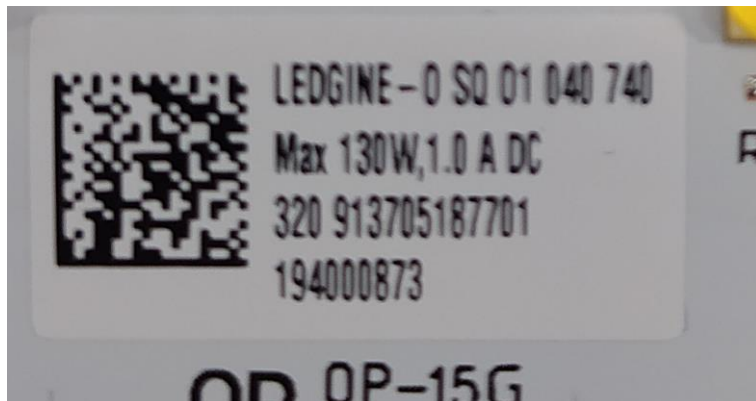
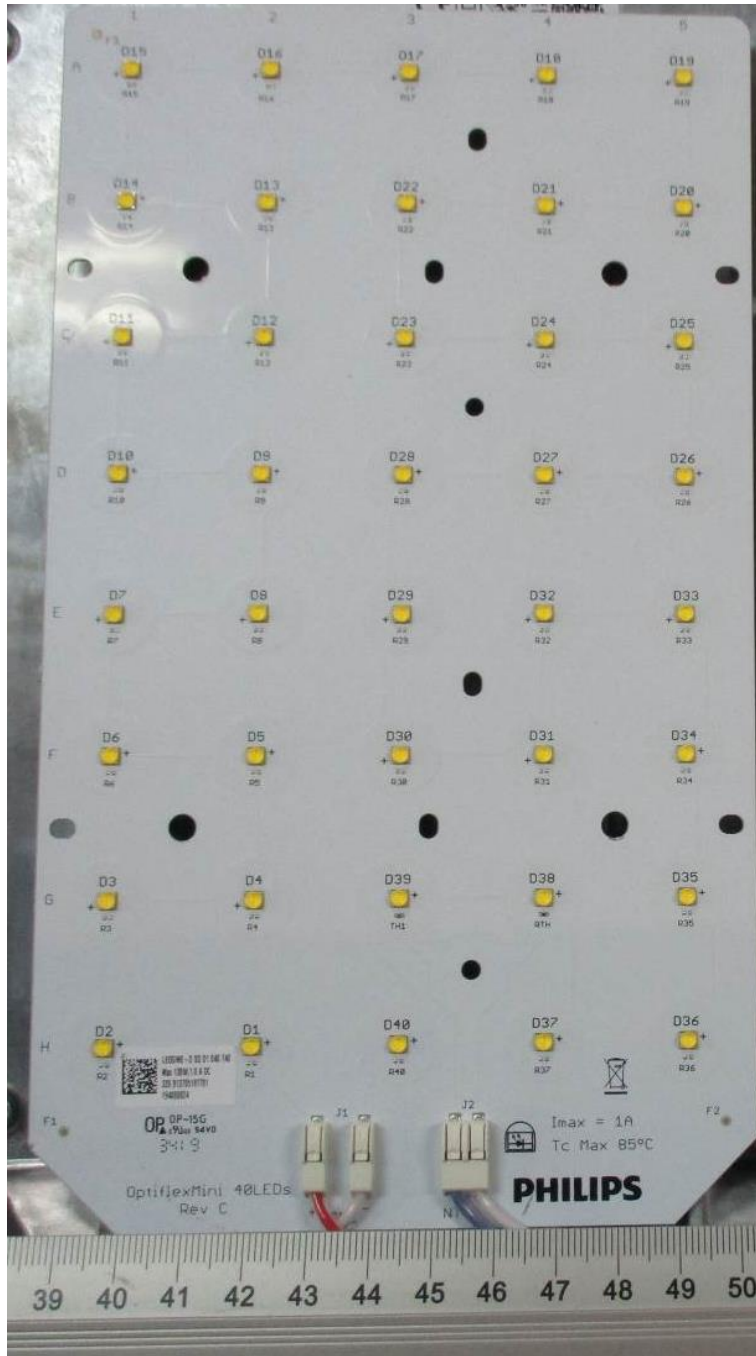


PD EPRS 003

Clause	Requirement + Test	Result - Remark	Verdict
--------	--------------------	-----------------	---------



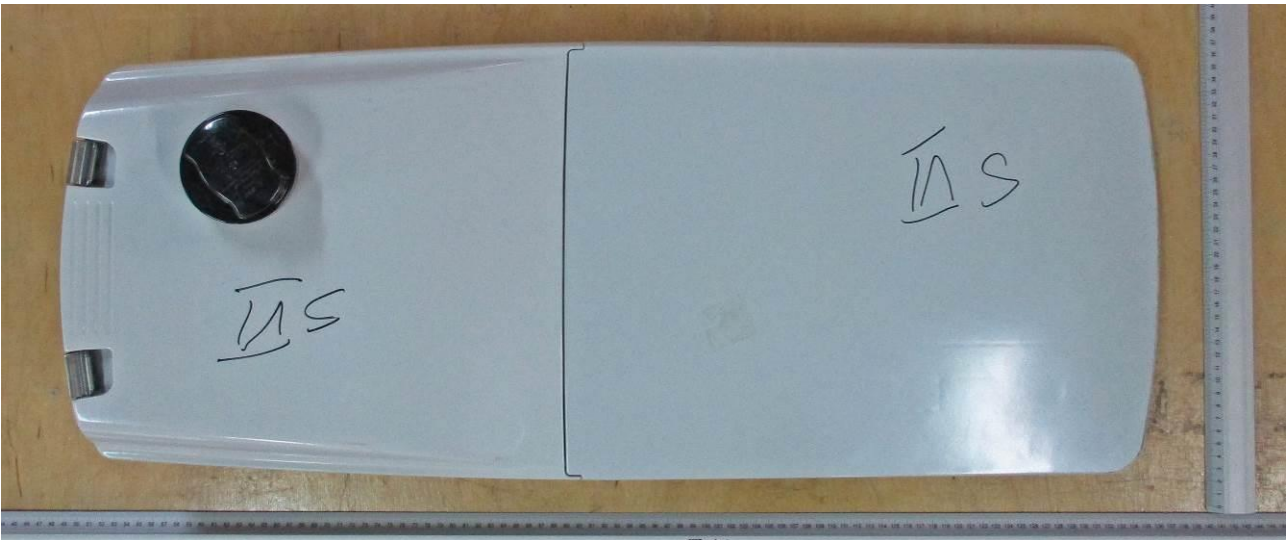
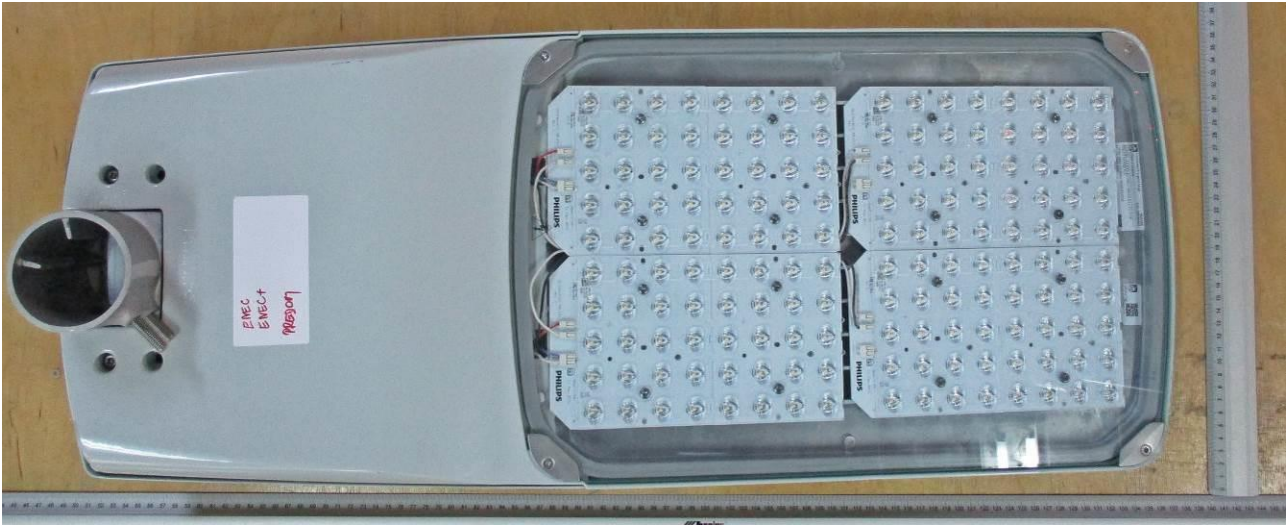
PD EPRS 003			
Clause	Requirement + Test	Result - Remark	Verdict



PD EPRS 003

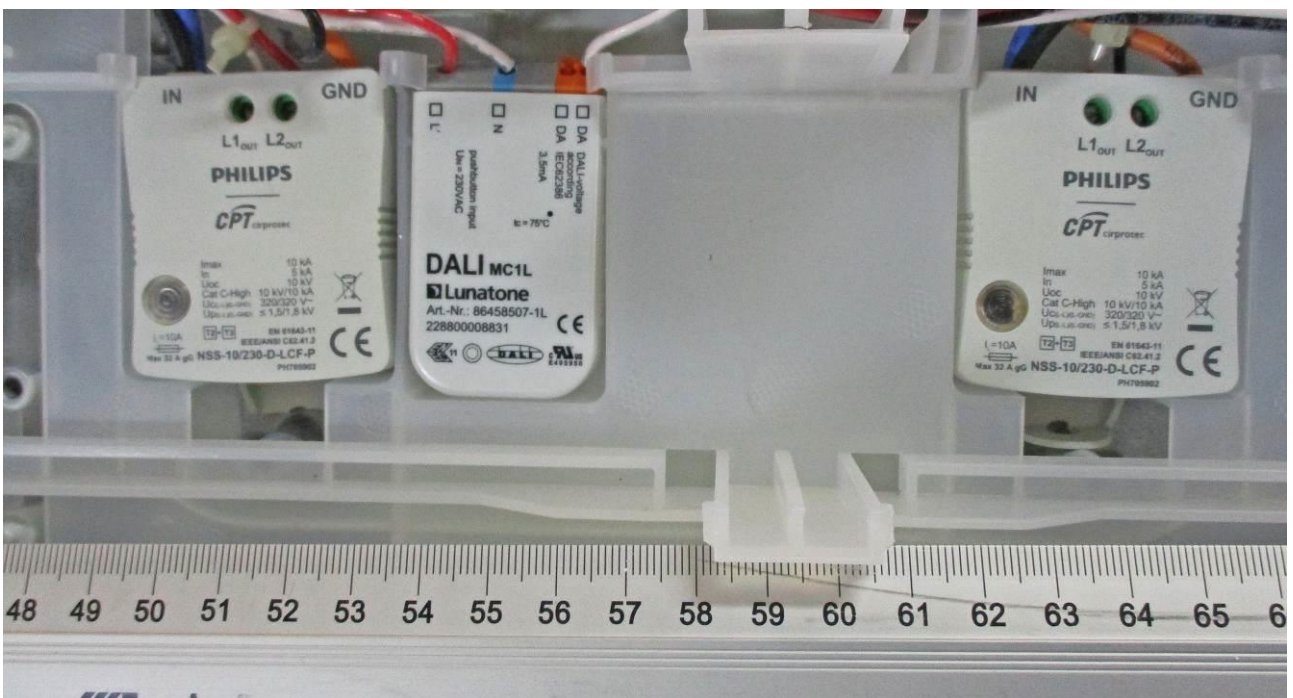
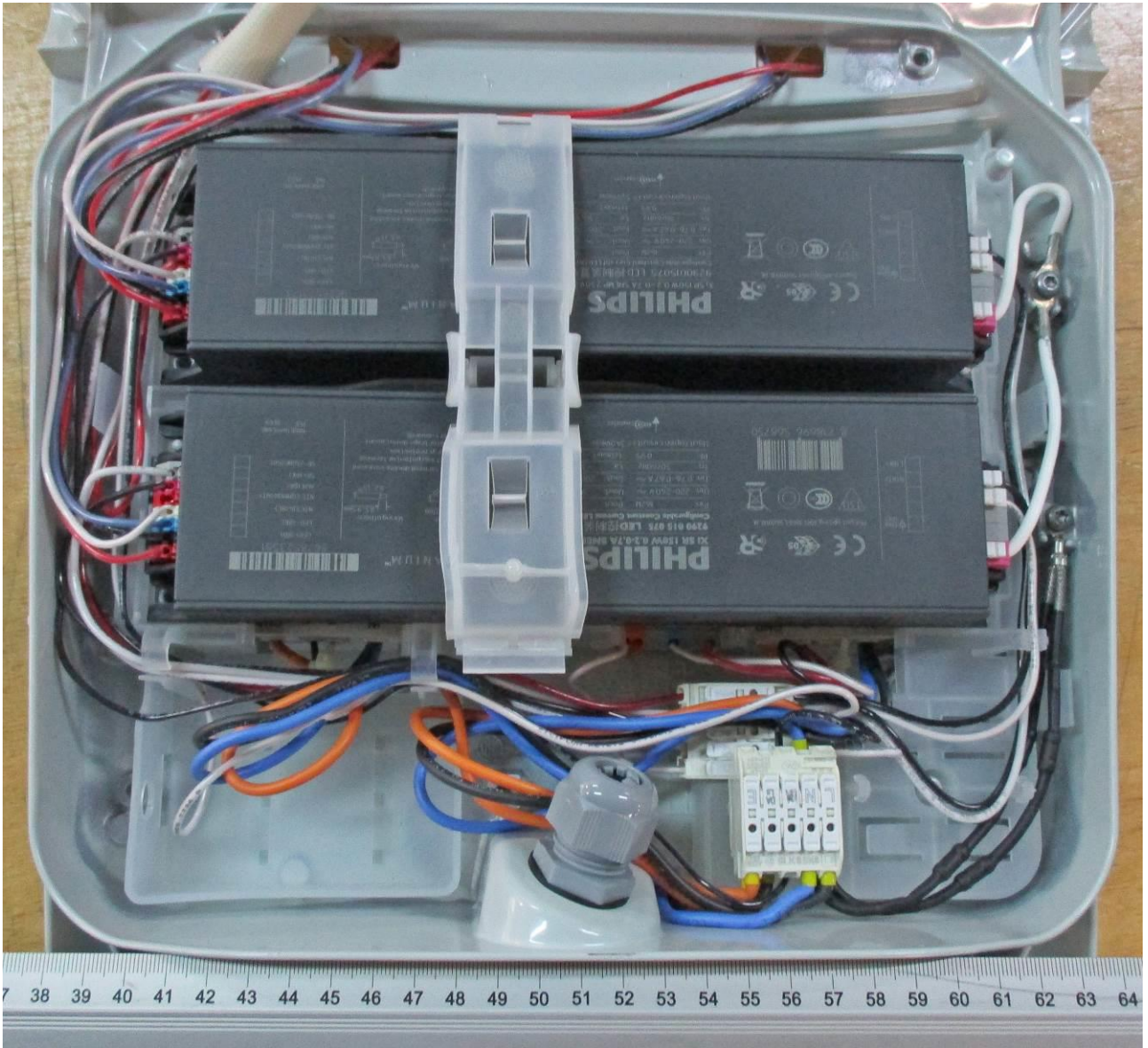
Clause	Requirement + Test	Result - Remark	Verdict
--------	--------------------	-----------------	---------

LumiStreet Pro gen2 Large BGP394 LED400-4S/740 II DM10 D11 P1-7-CP SRG10 32/48S PLS



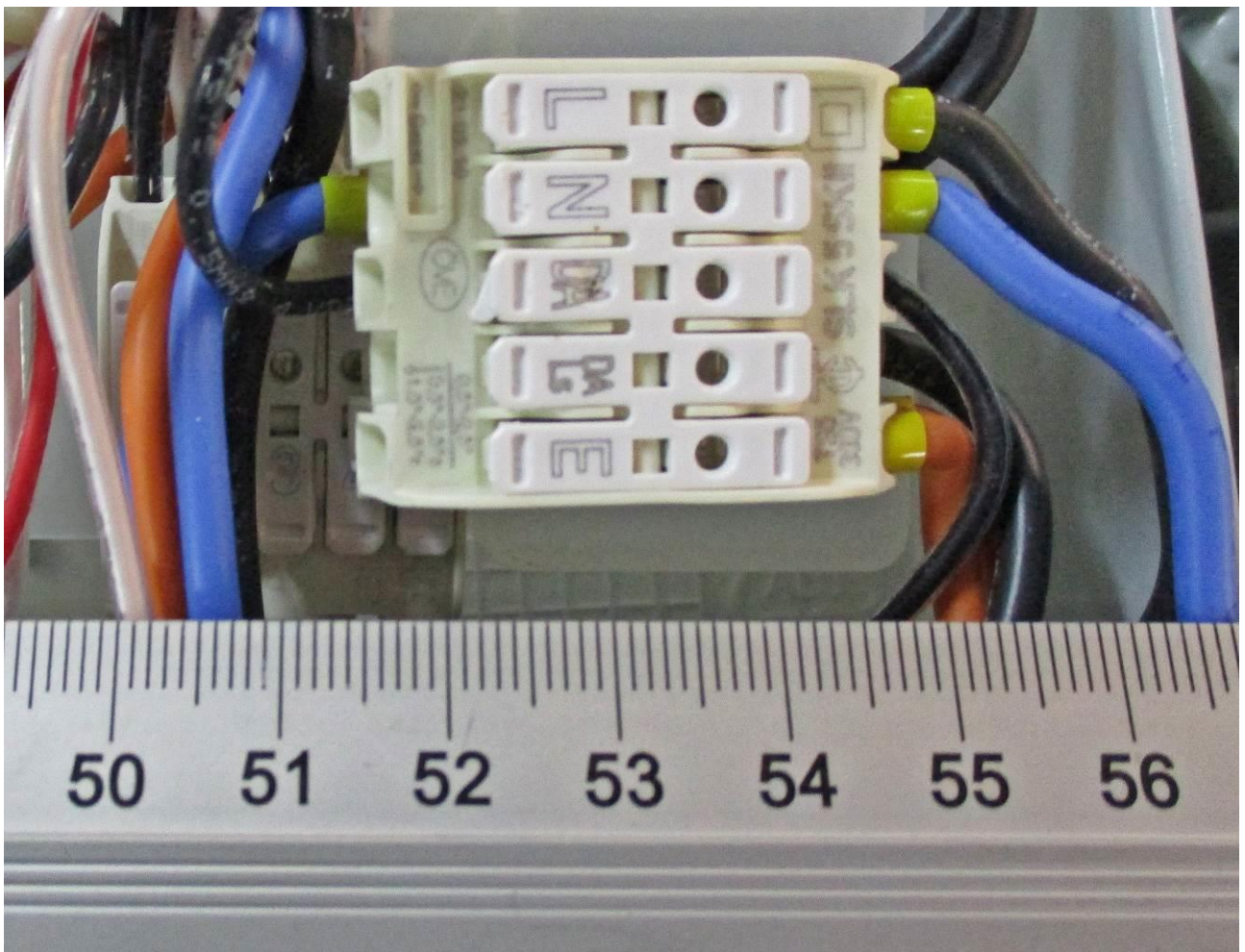
PD EPRS 003

Clause	Requirement + Test	Result - Remark	Verdict
--------	--------------------	-----------------	---------

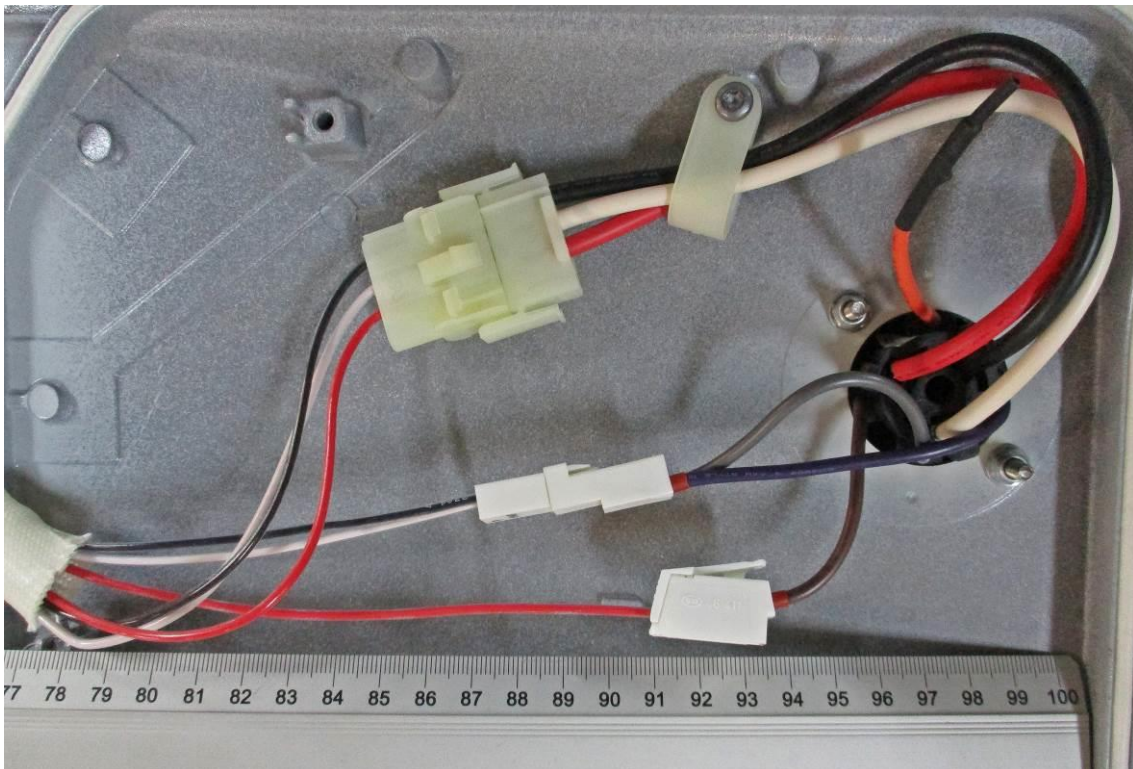
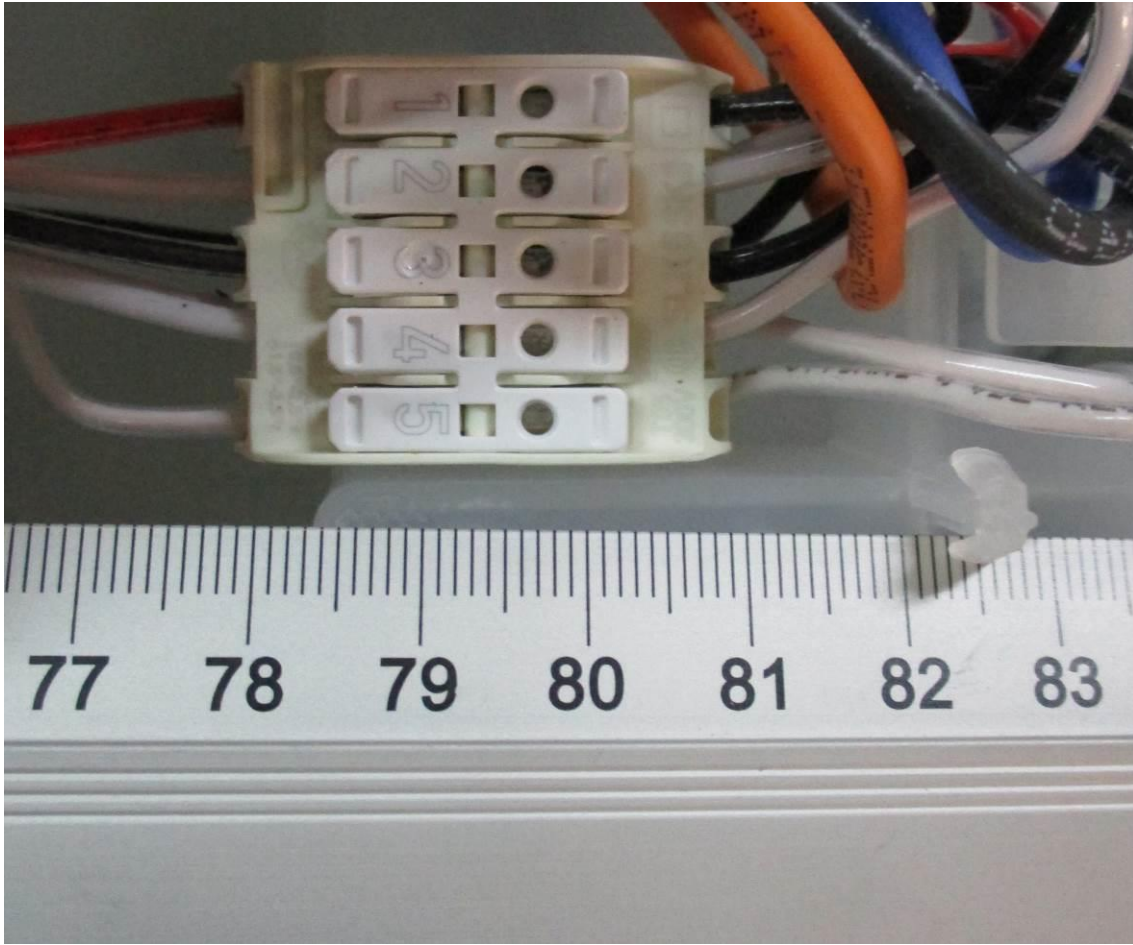


PD EPRS 003

Clause	Requirement + Test	Result - Remark	Verdict
--------	--------------------	-----------------	---------



PD EPRS 003			
Clause	Requirement + Test	Result - Remark	Verdict



PD EPRS 003

Clause	Requirement + Test	Result - Remark	Verdict
--------	--------------------	-----------------	---------

