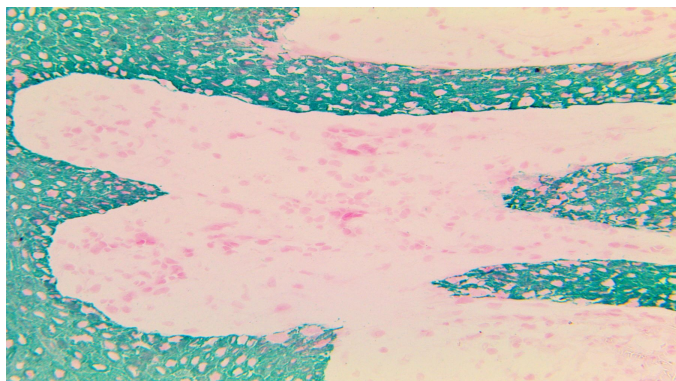


# Cytokeratin MNF116

Clone: MNF116  
Mouse Monoclonal



*Inset: IHC of Cytokeratin, MNF116 on a FFPE Basal Cell Carcinoma Tissue*

## Intended Use

For In Vitro Diagnostic Use.

This antibody is intended for use in Immunohistochemical applications on formalin-fixed paraffin-embedded tissues (FFPE), frozen tissue sections and cell preparations. Interpretation of results should be performed by a qualified medical professional.

## Immunogen

BALB/C mice immunized with crude extract of splenic cells from a nude mouse engrafted with MCF-7 cells, a human breast carcinoma cell line.

## Summary and Explanation

Cytokeratin MNF116 is a broad-spectrum anti-cytokeratin reacting with intermediate and low-molecular-weight keratins, ranging from 40 through 58 kD, corresponding to cytokeratin 5, 6, 8, 17 and 19. It shows a broad pattern of reactivity with human epithelial tissues from simple glandular epithelial to stratified squamous epithelia, like epidermis, mammary gland ducts, and tracheal epithelium.

Cytokeratin MNF116 is a useful aid for the classification of neoplasms of epithelial origin including Squamous Cell Carcinoma, Small Cell Carcinoma, Sarcomatoid Carcinoma, Spindle Cell Carcinoma, Epithelioid and Spindle Cell component of Malignant Mesothelioma and Adenocarcinoma. A wide range of soft tissue tumors are also positive with cytokeratin MNF116: monophasic and biphasic Synovial Sarcoma, vascular neoplasms including Epithelioid Hemangioendothelioma, Epithelioid Angiosarcoma, Epithelioid Sarcoma. Desmoplastic Small Round Cell Tumors require cytokeratin positivity for diagnosis. Smooth muscle tumors and Plasmacytoma may demonstrate aberrant expression of cytokeratin MNF116.

|                      |   |                           |                  |
|----------------------|---|---------------------------|------------------|
| <b>Antibody Type</b> | Mouse Monoclonal  | <b>Clone</b>              | MNF116           |
| <b>Isotype</b>       | IgG   | <b>Reactivity</b>         | Paraffin, Frozen |
| <b>Localization</b>  | Cytoplasmic   | <b>Species Reactivity</b> | Human            |
| <b>Control</b>       | Skin, Colorectal, Gastric, Breast and Prostatic Carcinomas  |                           |                  |
| <b>Application</b>   | Carcinomas of Unknown Primary Site, Undifferentiated Tumor, Breast Cancer, Melanoma & Skin Cancer, Lung Cancer, Germ Cell Tumor, Sarcoma & Soft Tissue, Testicular Cancer |                           |                  |

## Presentation

Anti-Cytokeratin, MNF116 is a Mouse Monoclonal antibody derived from cell culture supernatant that is concentrated, dialyzed, filter sterilized and diluted in buffer pH 7.5, containing BSA and sodium azide as a preservative.

| <b>Catalog No.</b> | <b>Presentation</b> | <b>Dilution</b> | <b>Volume</b> |
|--------------------|---------------------|-----------------|---------------|
| BSB 3532           | Predilute           | Ready-to-Use    | 3.0 mL        |
| BSB 3533           | Predilute           | Ready-to-Use    | 7.0 mL        |
| BSB 3534           | Predilute           | Ready-to-Use    | 15.0 mL       |
| BSB 3535           | Concentrate         | 1:25-1:100      | 0.1 mL        |
| BSB 3536           | Concentrate         | 1:25-1:100      | 0.5 mL        |
| BSB 3537           | Concentrate         | 1:25-1:100      | 1.0 mL        |

## Control Slides Available

| <b>Catalog No.</b> | <b>Quantity</b> |
|--------------------|-----------------|
| BSB-9159-CS        | 5 slides        |

**Storage** Store at 2-8°C (Control Slides: Store at 20-25°C)

## Precautions

1. For professional users only. Results should be interpreted by a qualified medical professional.
2. This product contains <0.1% sodium azide (NaN<sub>3</sub>) as a preservative. Ensure proper handling procedures are used with this reagent.
3. Always wear personal protective equipment such as a laboratory coat, goggles, and gloves when handling reagents.
4. Dispose of unused solution with copious amounts of water.
5. Do not ingest reagent. If reagent is ingested, seek medical advice immediately.
6. Avoid contact with eyes. If contact occurs, flush with large quantities of water.
7. Follow safety precautions of the heating device used for epitope retrieval (TintoRetriever Pressure Cooker or similar).
8. For additional safety information refer to Safety Data Sheet for this product.
9. For complete recommendations for handling biological specimens, please refer to the CDC document, "Guidelines for Safe Work Practices in Human and Animal Medical Diagnostic Laboratories" (see References in this document).

## Stability

**This product is stable up to the expiration date on the product label.**

Do not use after expiration date listed on package label. Temperature fluctuations should be avoided. Store appropriately when not in use and avoid prolonged exposure to room temperature conditions.

## Specimen Preparation

**Paraffin sections:** The antibody can be used on formalin-fixed paraffin-embedded (FFPE) tissue sections. Ensure tissue undergoes appropriate fixation for best results. Pre-treatment of tissues with heat-induced epitope retrieval (HIER) is recommended using Bio SB ImmunoDNA Retriever with Citrate (BSB 0020-BSB 0023), ImmunoDNA Retriever with EDTA (BSB 0030-BSB 0033), or ImmunoDNA Digester (BSB 0108-0112). See reverse side for complete protocol. Tissue should remain hydrated via use of Bio SB Immuno/DNA Washer solutions (BSB 0029 & BSB 0042).

**Frozen sections and cell preparations:** The antibody can be used on acetone-fixed frozen sections and acetone-fixed cell preparations.

## IHC Protocol

1. Cut and mount 3-5 micron formalin-fixed paraffin-embedded tissues on positively charged slides such as Bio SB Hydrophilic Plus Slides (BSB 7028).
2. Air dry for 2 hours at 58° C.
3. Deparaffinize, dehydrate, and rehydrate tissues.
4. Subject tissues to heat induced epitope retrieval (HIER) using a suitable retrieval solution such as ImmunoDNA Retriever with Citrate (BSB 0020-BSB 0023) or EDTA (BSB 0030-BSB 0033).
5. Any of three heating methods may be used:

### a. TintoRetriever Pressure Cooker or Equivalent

Place tissues/slides in a staining dish or coplin jar containing the ImmunoDNA Retriever with Citrate or EDTA and place on trivet in the pressure cooker. Add 1-2 inches of distilled water to the pressure cooker and turn heat to high. Incubate for 15 minutes. Open and immediately transfer slides to room temperature.

### b. TintoRetriever PT Module or Water Bath Method

Place tissues/slides in a pre-warmed staining dish or coplin jar containing the ImmunoDNA Retriever with Citrate or EDTA at 95°-99° C. Incubate for 30-60 minutes.

### c. Conventional Steamer Method

Place tissues/slides in a pre-warmed staining dish or coplin jar containing the ImmunoDNA Retriever with Citrate or EDTA in a steamer, cover and steam for 30-60 minutes.

6. After heat treatment, transfer slides in ImmunoDNA Retriever with Citrate or EDTA to room temperature and let stand for 15-20 minutes.

7. For manual IHC, perform antibody incubation at ambient temperature. For automated IHC methods, perform antibody incubation according to instrument manufacturer's instructions.

8. Wash slides with ImmunoDNA washer or DI water.

9. Continue IHC protocol. Wash slides between each step with ImmunoDNA washer solution.

## Abbreviated Immunohistochemical Protocol

| Step                     | ImmunoDetector AP/HRP | PolyDetector AP/HRP | PolyDetector Plus HRP |
|--------------------------|-----------------------|---------------------|-----------------------|
| Peroxidase/AP Blocker    | 5 min.                | 5 min.              | 5 min.                |
| Primary Antibody         | 30-60 min.            | 30-60 min.          | 30-60 min.            |
| 1st Step Detection       | 10 min.               | 30-45 min.          | 15 min.               |
| 2nd Step Detection       | 10 min.               | Not Applicable      | 15 min.               |
| Substrate- Chromogen     | 5-10 min.             | 5-10 min.           | 5-10 min.             |
| Counterstain / Coverslip | Varies                | Varies              | Varies                |

## Mounting Protocols

For detailed instructions using biodegradable permanent mounting media such as XyGreen PermaMunter (BSB 0169-0174) or organic solvent based resin such as PermaMunter (BSB 0094-0097), refer to PI0174 or PI0097.









## Product Limitations

Due to inherent variability present in immunohistochemical procedures (including fixation time of tissues, dilution factor of antibody, retrieval method utilized, and incubation time), optimal performance should be established through the use of positive and negative controls. Results should be interpreted by a qualified medical professional.

## References

1. Prieto VG, Lugo J, McNutt NS. Intermediate- and low-molecular-weight keratin detection with the monoclonal antibody MNF116. An immunohistochemical study on 232 paraffin-embedded cutaneous lesions. *J Cutan Pathol* 1996;23:234-41.
2. Mocanu L, et. Al. Expression of cytokeratin MNF116 and vimentin in pleural serous effusions. *Rom J Morphol Embryol* 2007;48(3):291-4.
3. Miettinen M., Keratin immunohistochemistry: update of applications and pitfalls, *Pathol Annu*, 1993, 28(Pt 2):113-143.
4. Mentzel T, et al. Epithelioid haemangiioendothelioma of skin and soft tissue: clinicopathologic and immunohistochemical study of 30 cases, *Am J Surgical Pathol*, 1997, 21(4):363-374.
5. Evans H. L., Baer S. C., Epithelioid sarcoma: a clinicopathologic and prognostic study of 26 cases, *Semin Diagn Pathol*, 1993, 10(4):286-291.
6. Guillou L., et al. "Proximal-type" epithelioid sarcoma, a distinctive aggressive neoplasm showing rhabdoid feature. Clinicopathologic, immunohistochemical, and ultrastructural study of a series, *Am J Surg Pathol*, 1997, 21(2):130-146.
7. Ramaeckers F. C., et al. Cytokeratins in smooth muscle cells and smooth muscle tumors, *Histopathology*, 1988, 12(5):558-561.
8. U.S. Department of Health and Human Services: Centers for Disease Control and Prevention. Guidelines for Safe Work Practices in Human and Animal Medical Diagnostic Laboratories. Supplement / Vol. 61, January 6, 2012. <https://www.cdc.gov/mmwr/pdf/other/su6101.pdf>

## Symbol Key / Légende des symboles/Erläuterung der Symbole

|   |  |   |  |   |
|---|--|---|--|---|
|  | QAdvis EAR AB<br>Ideon Science Park<br>Scheelevägen 17<br>SE-223 70 Lund, Sweden                         |  Storage Temperature<br>Limites de température<br>Zulässiger Temperaturbereich                           |  Manufacturer<br>Fabricant<br>Hersteller             |  Catalog Number<br>Référence du catalogue<br>Bestellnummer |
|  | In Vitro Diagnostic Medical Device<br>Dispositif médical de diagnostic in vitro<br>In-Vitro-Diagnostikum |  Read Instructions for Use<br>Consulter les instructions<br>d'utilisation<br>Gebrauchsanweisung beachten |  Expiration Date<br>Utiliser jusque<br>Verwendbar bis |  Lot Number<br>Code du lot<br>Chargenbezeichnung           |