

DATA SHEETS

Panel

Diagonal Size	55
Type	IPS
Resolution	1920*1080 (Full HD)
Pixel Pitch(mm)	0.63mm(H)*0.63mm(V)
Active Display Area(mm)	1209.6 * 680.4 mm
Brightness(Typ.)	500 nit
Contrast Ratio	1200:1
Viewing Angle(H/V)	178/178
Response Time(G-to-G)	8ms
Display Colors	8 bit - 16.7M
Color Gamut	72%
Operation Hour	24/7
Haze	28%

Display

Dynamic C/R	500,000:1
H-Scanning Frequency	57.3kHz ~ 70kHz
V-Scanning Frequency	48Hz ~ 75Hz
Maximum Pixel Frequency	77MHz

Connectivity

Input	
RGB	DVI-D, Display Port 1.2
Video	HDMI 2.0 (2)
HDCP	HDCP 2.2
Audio	Stereo mini Jack
USB	Only F/W upgrade
Output	
RGB	DP1.2(Loop-out)
Audio	Stereo mini Jack
External Control	RS232C(in/out), RJ45
External Sensor	Detachable type(IR)

Power

Type	Internal
Power Supply	AC 100 - 240 V, 50/60 Hz
Power Consumption	
Max[W/h]	
Typical[W/h]	

BTU(Max)	825.0
Sleep mode	less than 0.5W
Off mode	less than 0.5W

Mechanical Specification

Dimension (mm)	
Set	1211.5 x 682.3 x 70
Package	1398 x 844 x 257
Weight (kg)	
Set	
Package	
Bezel Width (mm)	0.9mm (Even)

Operation

Operating Temperature	0 °C ~ 40 °C	Humidity
-----------------------	--------------	----------

Feature

Key Features	Extreme Narrow Bezel
Orientation	N/A
Special Features	ACM Support(Advanced Color Management & Recovery, Haze 28%, Temperature Compensation and Play (DDC2B), Video Verifier Chain(10x10), Pivot Display, Digital Daisy Chain(Support Firmware update, Clock Battery Class A

Certification

Safety	UL (USA) : UL 60950-1 CSA (Canada) : C60950-1 CE (Germany) : EN60950-1 NF (France) : NF K60950-1 CCC (China) : GB 4943.1 GOST (Russia) : IEC60950-1 EN55022 PCBC (Poland) : PN EN55022 IEC60950-1 019-SCFI-1993 IRAM (Argentina) : IEC60950-1
EMC	FCC (USA) FCC Part 15, Subpart B EN55024 VCCI (Japan) VCCI Part 22 BSMI (Taiwan) : CNS13438 CISPR32:2015 CCC(China) : GB 4943.1
IP Rating	IP5X

Accessory

Included	Quick Setup Guide, Warra Power Cord, Remote Cont
Optional	
Stand	N/A
Mount	WMN-55VD
Specialty	N/A

Media Player

Media Player	Signage player box
---------------------	--------------------

	242
	90

19.апр
27.июн

10 % ~ 80 %

olor Management), Auto Source Switching mperature Sensor, RS232C/RJ45 MDC, Plug Vall(15x15(OSD)), Video Wall Daisy y, Image Rotation, Button Lock, DP 1.2 ting UHD Resolution, HDCP support), Smart (168hrs Clock Keeping) IP5X tested, EMC

EMKO (Norway) : EN60950-1 KC (Korea) : 4943.1-2011 PSB (Singapore) : IEC60950-1 1, EN55022 SIQ (Slovenia) : IEC60950-1, EC60590-1, EN55022 NOM (Mexico) : NOM- entina) :IEC60950-1 SASO (Saudi Arabia) :
part B class A CE (Europe) EN55022, CISPR32:2016 KCC (Korea) :KN32, KN35 (CISPR22) C-Tick (Australia) : AS/NZS :GB9254-2008, GB17625.1-2012

nty Card, DP cable, stereo to DB9 cable, roller, Batteries, External IR

Image2K

Four channel PCIe graphics card
with four direct HDMI outputs



SEAMLESS MIXING 4K AND HD OUTPUTS

Designed to power multi-screen, video wall and LED installations, the Image2K enable seamless mixing of 4K and HD outputs, all at 60 frames per second over direct HDMI outputs.

Fully integrated with Datapath's graphical setup wizard, the Image2K is easy to configure for different combinations of monitors, projectors, or LED controllers. Output resolution, rotation and wall layout are all easily configured using the intuitive graphical interface in a matter of minutes.

With outputs synchronized across all cards, multiple video walls and single screen displays can be powered from a single system, making the Image2K ideal for security suites, corporate office displays, retail signage or multi-video wall applications. Systems built using Datapath's VSN or iolite 600 chassis can use up to 8 Image2K cards, giving a total of 32 HD outputs, 16 4K outputs, or a mixture of the two.

FEATURES

- Four HDMI outputs capable of 2560 x 1600 at 60Hz
- Option to configure as two 4K (3840 x 2160 at 60Hz) outputs, or one 4K and three HD outputs.
- Supports mixing of HD and 4K outputs, all at 60fps
- HDCP 2.2 support
- Support for up to 8 cards in a single system

Engineering the **world's best** visual solutions


DATAPATH
EXCELLENCE BY DESIGN

Four channel PCIe graphics card with four direct HDMI outputs

SOFTWARE

Drivers

Datapath's multi-screen display driver is engineered specifically for use with Windows 10 & Windows Server 2019. The display driver unifies multiple Image2K cards to present a single desktop canvas to the Windows operating system, allowing each video wall to display hundreds of output windows with full support for picture-in-picture and overlaps. The multi-screen driver supports a maximum of 32 outputs for the Image2K (eight cards).

Display Driver Configuration Tool

Our unique graphical setup tool allows users to easily configure multiple outputs to create complex video wall layouts in a matter of minutes. The tool guides users through the setup process using a simple step-by-step wizard, enabling screen dimensions, resolution and position to be configured with ease. The built-in database of monitors contains hundreds of models from various manufacturers, allowing supported resolutions and bezel measurements to be easily configured for each monitor.

Control Software

The Image2K is fully compatible with Datapath's WallControl 10 software, which provides users with the interface required to quickly and effectively manage content that can include video captures, IP streams and local applications. Users are able to place any input source on any part of the video wall using a simple drag and drop interface. Precise positioning of each piece of content can be achieved through the mouse and keyboard, or via the revolutionary template tool.

COMPATIBILITY

Windows 10 LTSC and Windows Server 2019 operating systems.

MODELS AVAILABLE

Order Code: Image2K

4 channel HDMI PCIe graphics card.

SPECIFICATION

CARD FORMAT

PCI Express x16 Mechanical, x8 Electrical (Gen. 3)

CARD SIZE

110mm x 177mm (incl heat sink)

MAX EFFECTIVE TRANSFER RATE

5.5 GB/s sustained from Datapath Vision capture cards

MAX COLOUR DEPTH

8-bit per component

MAX CARDS PER SYSTEM

8 cards providing up to 32 HD channels

GRAPHIC CARD MEMORY

2GB

HDCP SUPPORT

2.2

MAX CURRENT AT +3.3V

0.6A

MAX CURRENT AT +12V

4.0A

MAX THERMAL POWER

35W

OPERATING TEMPERATURE

0 °C to 35 °C / 32 °F to 96 °F

STORAGE TEMPERATURE

-20 °C to 70 °C / -4 °F to 158 °F

RELATIVE HUMIDITY

5% to 90% non-condensing

MTBF

Over 80,000 hours

The Image2K can only be used in systems with PCI Express spread spectrum clock (SSC) disabled and is not compatible with other Datapath graphics cards.

All Image2K outputs should use premium HDMI certified cables to ensure maximum performance.

All products are shipped with the latest software, unless stated otherwise. Special requirements may be organised by contacting our Sales team.

**Datapath UK and
Corporate Headquarters**
Bemrose House, Bemrose Park,
Wayzgoose Drive, Derby,
DE21 6XQ, United Kingdom
☎ +44 (0) 1332 294 441
✉ sales-uk@datapath.co.uk

www.datapath.co.uk

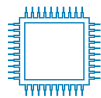
Datapath North America
2490 General Armistead Ave,
Suite 102, Norristown,
PA 19403,
USA
☎ +1 484 679 1553
✉ sales-us@datapath.co.uk

**DATAPATH**
EXCELLENCE BY DESIGN



PRECISION 5820 TOWER

Big power in an innovative compact design.



POWERFUL PERFORMANCE

The Dell Precision 5820 Tower delivers high performance for your most demanding applications with the latest Intel® Xeon® and Core® X Series processors and up to 512GB of fast 2666MHz memory. In addition, every Dell Precision comes with the exclusive Dell Precision Optimizer, which automatically tunes your workstation to run some of the most popular (ISV) applications at the fastest speeds possible. DPO Premium is a new AI-based version which optimizes your workstation, based upon how you use it, providing true customization.



INNOVATIVE DESIGN

The front FlexBay design supports a range of modules from scalable storage to security options, you can build the workstation designed for your creative expertise. Secure your data with the optional Smart Card (CAC/PIV) reader, hot swap NVMe SSDs and lockable hard drive carriers. The best-in-class smart design includes integrated front and rear handles for easy deployment and moves, and an externally accessible tool-less (lockable) power supply for superior serviceability.



LATEST TECHNOLOGY

Ready for complex projects, including artificial intelligence and virtual reality workflows, with next generation Radeon™ Pro and NVIDIA Quadro® professional graphics, with support for up to 600W of graphics power. Front access FlexBays provide outstanding storage expandability, up to 60TB with SATA, SAS and PCIe M.2/U.2 NVMe solid state drives, featuring hot-swap access, so you never have to stop creating.



OUTSTANDING RELIABILITY

The revolutionary multichannel thermal design delivers advanced cooling and acoustics so you can enjoy longer productivity under heavy workloads. Precision workstations are tested and are Independent Software Vendor certified to ensure the high-performance applications you rely on every day run smoothly.

Essential Accessories

PRECISION 5820 TOWER



Dell Canvas

Bring your ideas to life with a 27-inch workspace that empowers natural digital creation. Featuring a precise EMR pen, totem, and touch surface.



Dell Wireless Premium Keyboard & Mouse Combo | KM717

Enhance productivity and enjoy its elegant design that will fit into virtually any workspace. For increased productivity you can simultaneously pair up to two compatible devices with Bluetooth LE.



Dell 27 UltraSharp Monitor with PremierColor | UP2716D

Expect vivid, accurate color precision, ultra-thin bezels and ideal color coverage to suit your professional needs with the Dell UltraSharp 27 Monitor.



Jabra Evolve 75

With the ambient noise cancellation feature of this wireless headset you can hear every word clearly on your next call. This easy to carry device is certified for Microsoft Skype for Business.



3Dconnexion SpaceMouse Wireless

SpaceMouse Pro Wireless handles 3D navigation for a revolutionary two-handed work style preferred by the world's top 3D professionals. Intuitively examine and analyze your designs from every angle.



X-Rite Colorimeter i1Display Pro

The i1Display Pro ensures a perfectly calibrated and profiled display while delivering the speed, options and flexibility needed to maintain color accuracy.

Built for business

Dell Technologies Unified Workspace

Dell Technologies Unified Workspace is the most comprehensive solution to deploy, secure, manage and support virtually all devices from the cloud. We designed this revolutionary solution with intelligence and automation providing you with visibility across the entire endpoint environment. We help you save time, improve user experience, optimize resources and strengthen security.



DEPLOY

Our modern deployment solution, ProDeploy in the Unified Workspace allows you to revolutionize the way deployment gets done. By spending just one hour for set up, IT can then hand deployment to Dell and have preconfigured systems shipped directly to the end users--wherever they are.



SECURE

Dell Endpoint Security for the Unified Workspace helps you manage growing cyber risks while embracing workforce transformation. With Dell SafeGuard and Response powered by Secureworks, you gain actionable insight to help you quickly and efficiently prevent, detect and respond to cyber-attacks - keeping your environment free from harm.



MANAGE

We integrated our hardware management solution Dell Client Command Suite with VMware Workspace ONE, allowing you to take advantage of unified endpoint management (UEM) and manage the firmware, operating system and applications for all devices from the Workspace ONE console. UEM simplifies the management of the entire environment saving IT time from having to work between separate consoles for PCs and phones.



SUPPORT

ProSupport Plus continues to be the only predictive and proactive support in the market. When compared to key competitors, ProSupport Plus with SupportAssist reduced time to resolve a failed hard drive with up to 11x faster time to resolution*

*Based on a Principled Technologies test report, "Spend Less Time and Effort Troubleshooting Laptop Hardware Failures" dated April 2018. Testing commissioned by Dell, conducted in the United States. Actual results will vary. Full report: <http://facts.pt/L52XKM>

Features & Technical Specifications

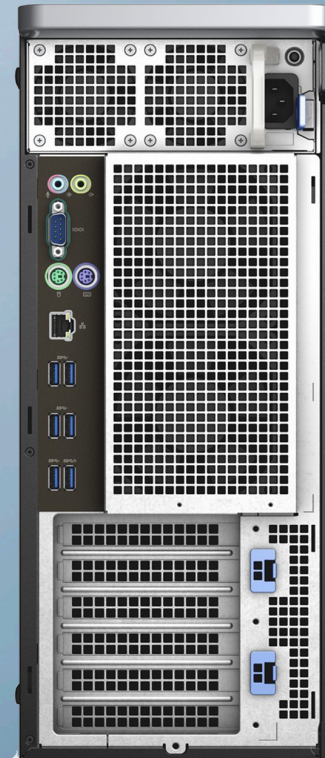
PRECISION 5820 TOWER

Feature	Precision 5820 Tower Technical Specifications	Feature	Precision 5820 Tower Technical Specifications
Processor Options	Intel® Xeon® Processor W-2000 Family and Core X Series CPUs with up to 18 cores and Intel Advanced Vector Extensions, Intel Trusted Execution Technology, Intel AES New instructions, Optimized Intel Turbo Boost and optional Intel vPro™ technology (Xeon W CPUs only) (Important Note: Features and Supported Configurations will differ between 5820 Tower Workstations with Intel® Xeon® W Processors and 5820 Tower Workstations with Intel® Core™ X Processors. Please see systems on Dell.com/Precision for specific configuration details.)	Storage Options ²	PCIe backplane chassis with integrated Intel controller and up to 4 with MegaRAID 9460* NVMe hardware RAID controller option - see controller section Note: Precision PCIe FlexBay backplane and single M.2 Module (incl. 1 M.2 PCIe/NVMe carrier) kits are available for customers to convert standard FlexBays* to support Intel and MegaRAID NVMe controller options. (different kits) Only 1 front accessible M.2 NVMe PCIe SSD is supported, due to reduced PCIe lane support on Core X i9 and i7 Series CPUs NVMe RAID 0,1 option (Intel RSTe vROC)* Up to 4 x M.2 NVMe PCIe SSDs via 1 x Dell Ultra-Speed Drive Quad x16 card. NVMe RAID 0,1,10 option (Intel RSTe vROC). M.2 NVMe PCIe SSDs Up to 4 x 2TB drives on 1 Dell Precision Ultra-Speed Drive Quad x16 card. Front FlexBay M.2/U.2 NVMe PCIe SSDs Up to 4 x 2TB M.2 drives Intel® Optane™905P SSDs Up to 4 x 960GB drives 2.5" SATA SSD Up to 6 x 1.9TB drives 2.5" SATA 7200 RPM Up to 6 x 1TB drives 3.5" SATA 7200 RPM Hard Drives Up to 5 x 12TB Enterprise Drives 2.5" SAS SSD Up to 6 x 800GB drives 3.5" SAS 7200 RPM 12Gb/s Up to 5 x 4TB 2.5" SAS 10K RPM 12Gb/s Up to 6 x 1.8TB 2.5" SAS 15K RPM 12Gb/s Up to 6 x 600GB M.2 PCIe SED SSD 512GB and 1TB Not all storage offerings (including SAS drives) are available with Core X Series CPUs Storage Controller Integrated: Intel® chipset SATA controller (6Gb/s) with 6 SATA ports plus 2 dedicated ports for optical drives. Intel RSTe software RAID 0,1,5,10* Intel RSTe (vROC) software RAID 0,1,10 option (motherboard activation key) for M.2 NVMe PCIe SSDs on Dell Ultra-Speed Drive Quad card, Duo x8 card (RAID 0,1) and for 2 x front FlexBay M.2/U.2 NVMe PCIe SSDs* (RAID 0,1) or front FlexBay NVMe PCIe SSDs (RAID 0,1) Customer kit available for Intel RSTe (vROC) motherboard activation key for NVMe RAID support. Optional: Broadcom MegaRAID® SAS 9440-8i 12Gb/s SAS (6Gb/s SATA) PCIe controller, 8 ports, Software RAID 0,1,5,10.* MegaRAID® SAS 9460-16i 12Gb/s SAS (6Gb/s SATA) PCIe controller (4GB cache with Flash module/Super Cap backup) Hardware RAID 0,1,5,10.* MegaRAID 9460* controller NVMe option supports up to 4 front FlexBay M.2/U.2 NVMe PCIe SSDs with Hardware RAID 0,1,5,10
Operating System Options	Windows 10 Pro for Workstations (up to 4 Cores) Windows 10 Pro for Workstations (4 Cores Plus) Windows 10 Pro - for Core X Series CPUs Red Hat Enterprise Linux 8.0 Ubuntu Linux 18.04 Suse Linux (SLES 12 SP2) supported* NeoKylin 6.0 SP5 (China only) *		
Chipset	Intel® C422 (Skylake/Cascade Lake W) ; Intel X299 (Skylake/Cascade Lake X)		
Memory Options ¹	Four channel memory up to 512GB 2666MHz and up to 256GB 2933MHz DDR4 (RDIMM) ECC memory. (Up to 256GB 2666MHz DDR4 (UDIMM) Non-ECC memory) 8 DIMM slots. Note: Memory speed is dependent on specific Intel Xeon or Core X Processor installed.		
Graphics Options ¹	Support for 2 PCI Express® x16 Gen 3 graphics card - up to 600W with maximum of up to 2 x 300W double width graphics cards. Not all graphics card offerings are available with Core X i9 and i7 Series CPUs High end 3D cards: Radeon™ Pro WX 9100 Radeon™ Pro SSG NVIDIA Quadro GV100 NVIDIA Quadro P6000 NVIDIA Quadro P5000 Nvidia Quadro RTX 8000 Nvidia Quadro RTX 6000 Nvidia RTX 5000 Mid-range 3D cards: Radeon™ Pro WX 7100 Radeon™ Pro WX 5100 Radeon™ Pro WX 4100 NVIDIA Quadro P4000 NVIDIA Quadro P2000 NVIDIA Quadro P2200 NVIDIA Quadro RTX 4000 Entry 3D cards: Radeon™ Pro WX 3200 Radeon™ Pro WX 2100 NVIDIA Quadro P1000 NVIDIA Quadro P620 NVIDIA Quadro P400 Professional 2D cards: NVIDIA NVS 310		
Storage Options ²	Front accessible FlexBays support up to 4 x 2.5"/3.5" SATA HDD/SSDs and up to 6 x 2.5" and 5 x 3.5" drives with 5.25" bay populated. Up to 2 front accessible (hot plug) M.2/U.2 NVMe PCIe SSDs are supported in FlexBay 1 on enabled		

Features & Technical Specifications

PRECISION 5820 TOWER

Feature	Precision 5820 Tower Technical Specifications	Feature	Precision 5820 Tower Technical Specifications
Communications	Integrated: Intel® i219 Gigabit Ethernet controllers with Intel Remote Wake UP, PXE and Jumbo frames support Optional: Intel® i210 10/100/1000 single port PCIe (Gen 3 x1) gigabit network card, Intel® X550-T2 10GbE dual port PCIe (Gen 3 x4) network card	Security Options (Check regional availability)	Trusted Platform Module (TPM 2.0); Optional CAC/PIV card reader for slimline bay, chassis Intrusion switch; Setup/BIOS Password; I/O Interface Security; Kensington® lock slot, Padlock ring, lockable power supply; Optional hard drive locking sleds (key lock), Dell Data Guardian, Dell Endpoint Security Suite Enterprise, Lockable front bezel (covers FlexBays), Front FlexBay NVMe drives are removable (hot swap).
Audio Controller	Integrated Realtek ALC3234 High Definition Audio Codec (2 Channel)	Manageability ³	AMT or vPro with DASH support* Dell vPro Enhancements (Grasslake)* SNMT/CIM vis OMCI Dell Command Suite
Speakers	Internal Speaker; Optional Dell 2.0 stereo speaker systems available and Dell sound bar for select flat-panel displays	Regulatory and Environmental	Energy Star® configurations available* including 80 PLUS® registered Gold power supplies; EPEAT® registered (see epeat.net for specific registration rating/status by country); China CECP; GS Mark. For a complete listing of declarations & certifications, see Dell's regulatory & compliance homepage at dell.com/regulatory_compliance
Add-in cards	Optional: Dell Precision Ultra-Speed Drive Duo (HH/HL,x8) & Ultra-Speed drive Quad (FH/FL,x16) with active cooling. Support for up to 2 and 4 M.2 PCIe NVMe SSDs respectively. Optional USB 3.1 (Gen 2) 10Gb/s Type C card (2 ports) 1 DP pass-through port Optional dual & quad display Teradici PCoIP remote workstation host PCIe cards Optional Thunderbolt 3 PCIe Card (2 ports) 1 DP pass-through port Optional Serial Port PCIe Card	Warranty & Support Services ⁴	3-Year Limited Hardware Warranty and 3-year NBD On-Site Service after Remote Diagnosis Optional: Dell ProSupport is designed to rapidly respond to your business's needs, help protect your investment and sensitive data, and provide enhanced proactive support services to help reduce risk and complexity within your IT environment
I/O Ports	Front 2 – USB 3.1 Gen 1 Type A 2 – USB 3.1 Gen 1 Type C 1 – Universal Headphone Jack Internal 1 – USB 2.0 Type A 1 – 2 x 5 USB 2.0 header. (requires 3rd party splitter cable to support 2 x USB 2.0 Type A ports) 6 – SATA @6Gb/s plus 2 for optical Rear 6 – USB 3.1 Gen 1 Type A (6 th port supports Power Delivery) 1 – Serial 1 – RJ45 Network 2 – PS2 1 – Audio Line out 1 – Audio Line in/Microphone		
Chassis	HxWxD: 16.45" (417.9 mm) Width: 6.95" (176.5 mm) Depth: 20.4" (518.2 mm) Starting at weight 34lb/15.4kg Bays: (2) FlexBays can support up to 2x 3.25" or 2.5" drives each and (1) 5.25" HDD/SSD drives as factory option or customer kit. (1) Slimline optical bay; (1) SD slot UHS II Class 3 with read only support (SW enabled) Available PCIe backplane FlexBay chassis supporting 1 - 4 x M.2/U.2 PCIe NVMe SSDs. Slots: All slots PCIe Gen 3: (2) PCIe x16, (1) PCIe x16 wired as x8, (1) PCIe x16 wired as x4, (1) PCIe x16 wired as x1, 1 PCI 32/33 Power Supply: 425W* or 950W (input voltage 100VAC - 240VAC) –90% efficient (80PLUS Gold Certified) Externally accessible/removable/lockable		
Storage devices	Slimline Bay Options: DVD-ROM; DVD+/-RW, CAC/PIV card reader. 5.25" Bay Options: BD, DVD+/-RW; Standard: SD slot UHS II Class 3 with read only support		



PRECISION 5820 TOWER

Create without limits

* Not available on the 5820 Tower with Core X i9 and i7 CPUs.

ISV certification applies to select configurations:

1 System memory may be used to support graphics, depending on system memory size and other factors.

2 Hard Drive capacity varies with preloaded material and will be less.

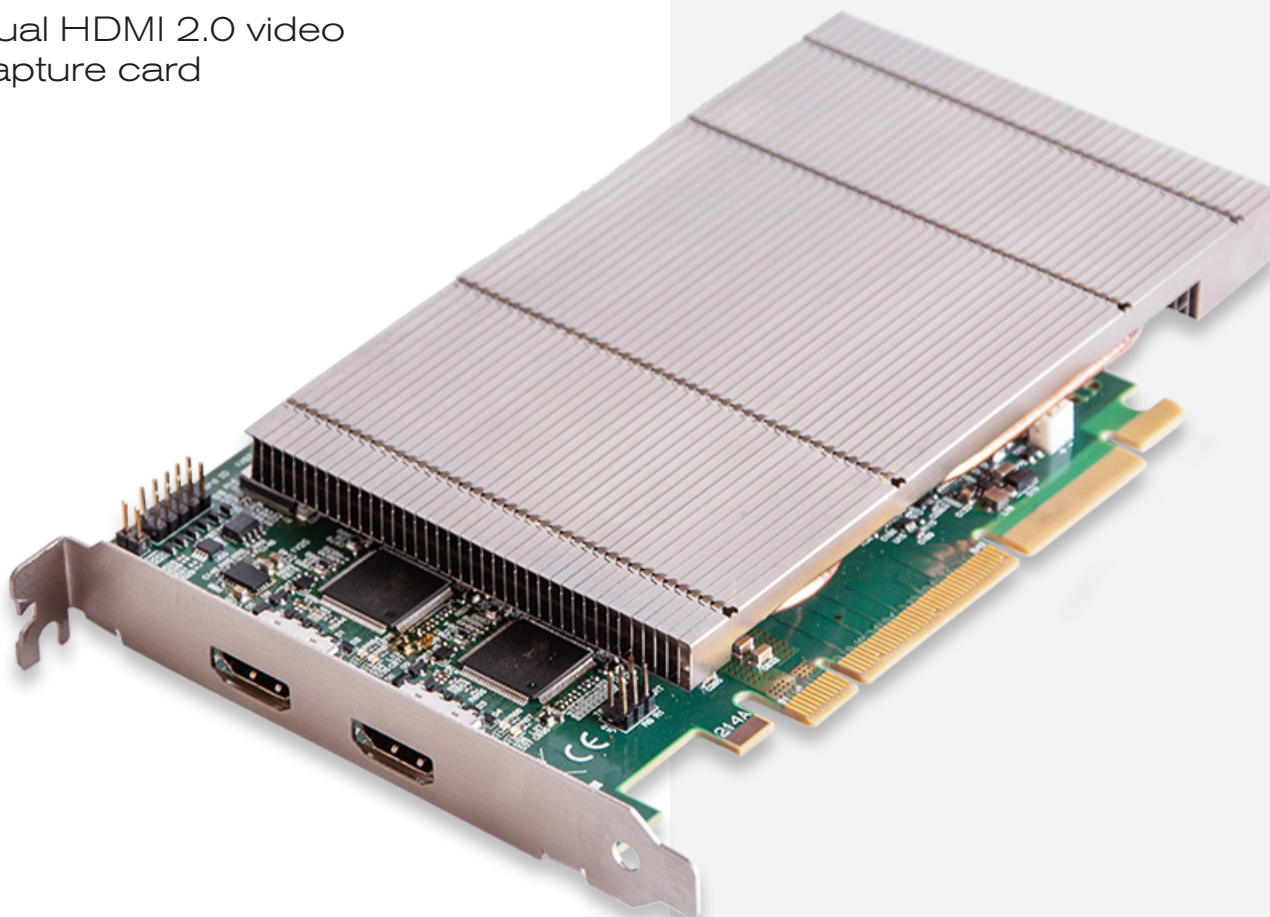
3 Systems Management Options: Intel® vPro Technology - Fully vPro-capable at point of purchase; the vPro systems management option requires vPro processors. Includes support for Intel Advanced Management Technology (AMT) 9.x. Intel® Standard Manageability - Fully enabled at point of purchase, the Intel Standard Management option is a subset of the AMT features. ISM is not upgradeable to vPro technology post-purchase. No Out-of-Band Systems Management - This option entirely removes Intel out of band systems (OOB) management features. The system can still support in band management. OOB management support through AMT cannot be upgraded post-purchase.

4 Availability and terms of Dell Services vary by region. For more information, visit Dell.com/servicecontracts/global; Limited Hardware Warranty available by writing Dell USA LP, Attn: Warranties, One Dell Way, Round Rock, TX 78682 or see www.dell.com/warranty; Onsite Service after Remote Diagnosis: Remote Diagnosis is determination by online/phone technician of cause of issue; may involve customer access to inside of system and multiple or extended sessions. If issue is covered by Limited Hardware Warranty (www.dell.com/warranty) and not resolved remotely, technician and/or part will be dispatched, usually within 1 business day following completion of Remote Diagnosis. Availability varies. Other conditions apply.

Dell, EMC, and other trademarks are trademarks of Dell Inc. or its subsidiaries. Other trademarks may be trademarks of their respective owners. Intel and the Intel logo are trademarks of Intel Corporation in the U.S. and/or other countries. Microsoft and Windows are trademarks of Microsoft Corporation in the U.S. and/or other countries.

VisionSC-UHD2

Dual HDMI 2.0 video
capture card



DESCRIPTION

AV integrators demand the highest resolution video offering both detail and colour accuracy when creating the most stunning visual displays. From command and control rooms to reception areas, collaboration environments and digital signage applications, the VisionSC-UHD2 ensures the very best quality and ultimate customer satisfaction.

Providing two HDMI 2.0 capture channels with HDCP 2.2 at 4K60p with full 4:4:4 colour sampling, the VisionSC-UHD2 compliments our hugely successful VisionSC capture card family and offers unparalleled performance in frame grabber technology.

FEATURES

- Two independent HDMI 2.0 capture channels
- Eight lane PCIe Gen.3 interface, Net 6 GB/s total capture bandwidth
- 2 GB Frame Buffer Memory
- Full 10-bit processing pipeline
- Up to 8K by 8K resolutions
- Built for the highest density systems supporting multiple inputs
- Full support of the Vision Performance Feature set
- Datapath unified Windows® and Linux® driver

Engineering the **world's best** visual solutions


DATAPATH
EXCELLENCE BY DESIGN

Advanced capture technology

VISION PERFORMANCE FEATURES

The VisionSC-UHD2 is supported by the Datapath Vision Performance Driver. Features include: Datapath LiveStream for a single line of capture latency, MultiStream for multiple capture instances, hardware timestamping, HDMI signal conditioning supporting longer cable runs, automatic fast & reliable mode detection, frame synchronised ganging of inputs (dual 4K into 8K x 2K), flexible onboard Colour Space Converter plus a whole lot more.

An advanced hardware scaling engine with polyphase multi-tap filter also provides superb antialiasing performance when downscaling and smoother transitions when upscaling.



PROVEN AND RELIABLE SDK

Built for the future, Datapath continues to maintain and support its RGBEasy SDK for application developers as well as offering a Microsoft DirectShow interface based on the AV Stream framework. Inputs can be accessed by any DirectShow or Media Foundation applications including:

- Microsoft Media Encoder
- VLC
- Telestream WireCast
- vMix
- VidBlaster
- OBS Project
- Adobe Flash Media Encoder
- Dataton Watchout

A Video for Linux (V4L) driver package is also available for download.

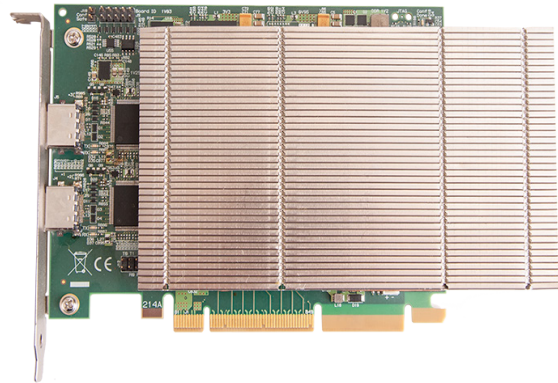
COMPATIBILITY

The VisionSC-UHD2 is supported by the following operating systems: Linux, Windows® XP, Windows Vista, Windows Server 2003, Windows Server 2008, Windows 7, Windows 8/8.1 and Windows 10.

Datapath SDK is included for software developers.

MODELS AVAILABLE

Order Code: VisionSC-UHD2
Dual HDMI 2.0 capture card



SPECIFICATION

BOARD FORMAT

PCIe x8 plug-in card

DIMENSIONS

110mm x 177mm (incl heat sync)

CONNECTORS

Dual HDMI 2.0

MAX CAPTURE RATE

600MHz TMDS Clock
Max capture surface of 8k x 8k

FRAME BUFFER

2GB

INPUT MODE DETECTION

Automatic

PIXEL TRANSFER FORMATS

R RGB10 (10-bit), 8-8-8 (24/32)
5-6-5, 5-5-5, 8-bit mono
Y410 (10-bit), 4:2:2, YUY2,
UYVY, YVYU
Planar Modes: NV12, YV12

COLOUR SPACES

BT2020, BT709, BT601 with
selectable limited and full range
encoding

UPDATE RATE

Captured frame rate will match
the source providing PCIe
bandwidth is not exceeded

VIDEO STANDARD

HDMI 2.0, HDMI 1.4, HDMI 1.3

POWER REQUIREMENTS

Max current at +3.3V - 1A
Max current at +12V - 1.6A
Max power ≈ 22W

OPERATING TEMPERATURE

0 °C to 35 °C / 32 °F to 96 °F

STORAGE TEMPERATURE

-20 °C to 70 °C / -4 °F to 158 °F

RELATIVE HUMIDITY

5 to 90% non-condensing

WARRANTY

3 years

All products are shipped with the latest software available, unless stated otherwise. Special requirements may be organised by contacting our Sales team.

**Datapath UK and
Corporate Headquarters**
Bemrose House, Bemrose Park,
Wayzgoose Drive, Derby,
DE21 6XQ, United Kingdom
☎ +44 (0) 1332 294 441
✉ sales-uk@datapath.co.uk

Datapath North America
2490 General Armistead Avenue,
Suite 102, Norristown,
PA 19403,
USA
☎ +1 484 679 1553
✉ sales-us@datapath.co.uk

www.datapath.co.uk

**DATAPATH**
EXCELLENCE BY DESIGN

WallControl 10 Software

Advanced video wall control technology



ADVANCED VIDEO WALL CONTROL

Video wall deployments require a number of users to interact simultaneously with a large number of inputs across a multiple screens to get the data where they require.

WallControl 10 provides users with the interface required to quickly and effectively manage content that include video captures, IP streams and local applications. Users are able to place any input source on any part of the Video Wall using a simple drag and drop operation. Precise positioning of each piece of content can be achieved through the mouse and keyboard, or via the revolutionary template tool.

The Template Tool allows users to not only place their own templates across an entire wall which evenly distributes content but WallControl 10 also allows users to apply a template to an individual window so multiple windows can be grouped together and moved as a single item.

WallControl 10 also allows you to save and recall layout files quickly and easily ensuring the video wall is always showing the correct information.

SIMPLE INTERFACE - ADVANCED FEATURES

WallControl 10 will allow any piece of content, whether from a Datapath capture card, IP via the PC processor or an ActiveSX card or local media to be placed in anywhere on a video wall. WallControl 10 also allows administrators to deploy multiple unique videos walls from a single Datapath VSN system.

Using User Rights Management administrators can determine which users on their network can firstly access each wall and secondly determine what level of permission each user will have. Restrictions can include the number of sources and layout files available to each user, which templates they can deploy and whether the desktop capture is available or not.

Engineering the **world's best** visual solutions

**DATAPATH**
EXCELLENCE BY DESIGN

Advanced video wall control



Layouts can be accessed via the web interface

WEB INTERFACE

The web interface allows users to connect to the video wall from any compatible browser. As long as the browser and the Datapath wall controller are on the same network, users are able to connect through a browser on their laptops, phones or tablets. Users can select which wall they wish to change and then will be presented with the available layouts. They can use the 'Snapshot' feature to receive an image of what is being displayed on the wall.

The Web Interface is compatible with Chrome and Safari browsers. Systems administrators can also choose which walls can be accessed via the Web Interface, giving the ability to disable web access on sensitive walls.

KVM

Keyboard and Mouse (KVM) functionality gives WallControl 10 operators the ability to manipulate sources from their workstations. In Command and Control environments, sources being captured may derive from unmanned workstations processing data for display onto a wall. With WallControl 10 software, operators can use their local keyboard and mouse to manipulate the remote machine. This allows high quality capture to be placed on a video wall, whilst the KVM is performed locally via an IP based Datapath Agent window.

ADVANCED WEB PAGE CONTROL

Advanced web page control gives operators the ability to view and manipulate web pages. The advanced functionality includes the auto-refresh of web pages allowing for up-to-the-minute monitoring, vertical and horizontal scroll ability to position the web page view, and a zoom function to focus only on the most important sections of a web page.

MULTIWALL

WallControl 10 allows multiple walls to be delivered by a single VSN system. Walls in separate areas of a building can be independently driven from a single location.

Multiple walls can be easily set up using the wall creator wizard and if required each wall can be assigned a unique set of sources or video resources.

Advanced video wall control

USER RIGHTS MANAGEMENT

User rights management can be deployed on each VSN system. Users can be assigned roles on a per wall basis based on their Windows log in, with each role allowing access to a subset of sources or layout files. A user may have unrestricted access on Wall 1 but be confined to pre-determined layouts on Wall 2.

TEMPLATES

WallControl 10 allows users to create templates that subdivide the video wall. Users can drop content into each area and the content will automatically fill the template space. Users can also use templates on active Windows to create groups of content that can all be moved, resized and managed together.

CROPPING

WallControl 10 includes the ability to crop both SQX and Vision sources. With a user-friendly interface, cropping is done by selecting the area of interest from a snapshot of the source. Save the crop to make it available for instant deployment to the video wall, and as part of a layout file.

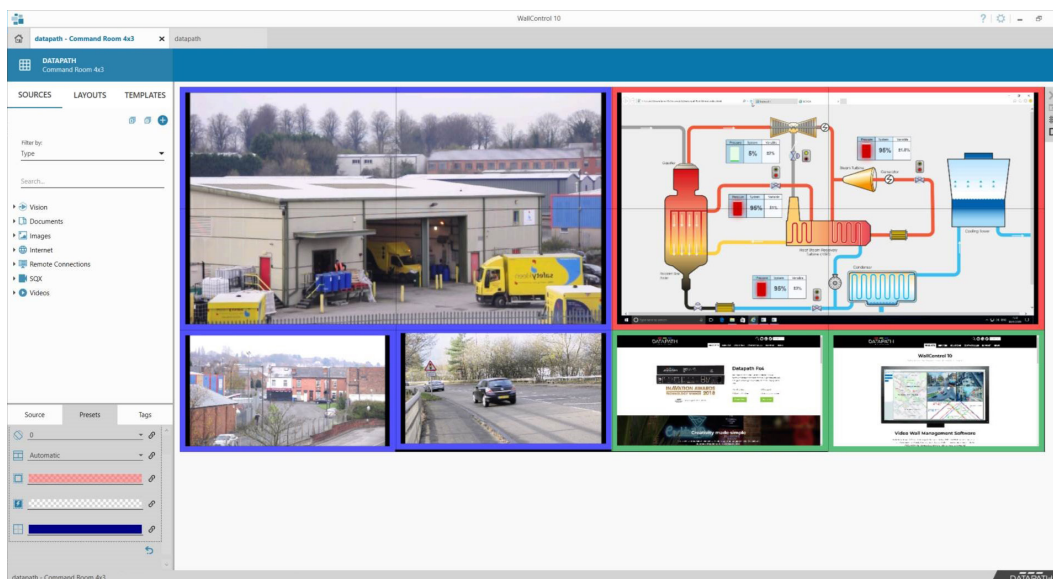
ON-SCREEN DISPLAY (OSD)

The On-Screen Display feature allows users to place text over Vision and SQX windows. This allows operators to name windows so viewers can quickly identify what they are seeing on the video wall. The OSD also allows users to add variables to the window such as Time and Date, Frame Rate & Source resolution as well as being to set the text size, colour and font. OSD is available on Windows 7 and Windows 10 using the Datapath WDDM driver.

BORDERS AND FRAMES

The Borders and Frames feature allow users to add a colour surround to the images on the video wall. Adding a border will surround the content with a chosen colour irrespective of the aspect ratio, whilst adding a frame will add a colour around the window on the video wall. Borders and Frames can be used to signify the importance of a piece of content, to quickly identify the source type or to categorise sources that may look similar but are monitoring different subsystems.

Borders are available on Vision and SQX windows, frames are available on all windows. Borders and Frames can also be controlled via the Command Line Interface.

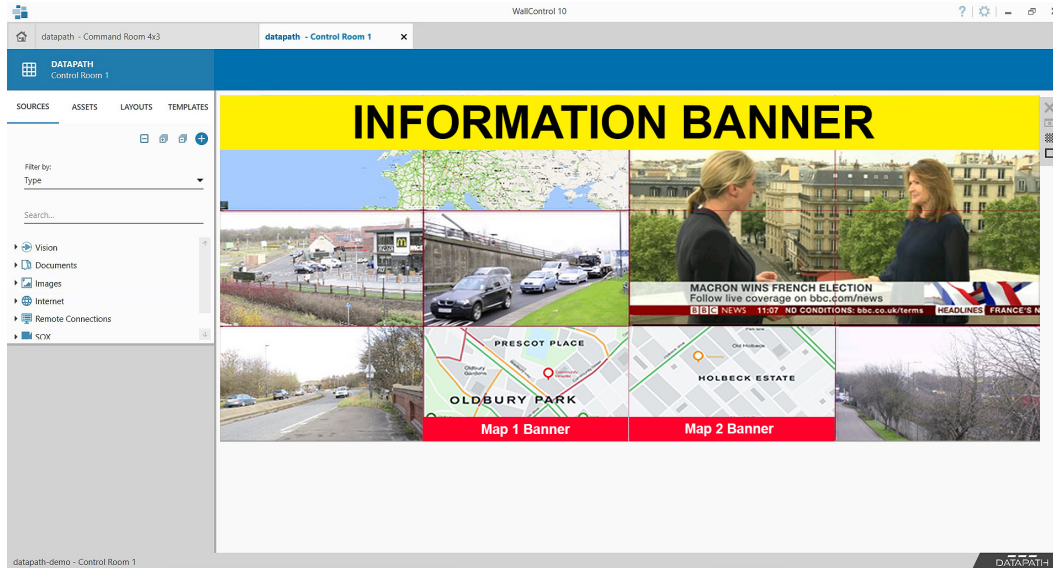


Use borders and frames to surround content with a chosen colour to group source types or prioritise content.

Advanced video wall control

BANNERS

Create banners for display on the video wall. Users specify the banner text (either by entering manually or by specifying an RSS feed to automatically parse), text scrolling direction (or setting as static) and the background colour for the banner. Transparent backgrounds are also supported.



Create banners with text or RSS feed content to scroll across the video wall.

ASSET MANAGEMENT

Once created, banners can be saved in the new Asset Manager included as part of WallControl 10 Pro, for re-use in different layouts across multiple video walls. Configured windows (with crops, OSD, borders and carousels) can also be saved as an Asset for quick recall as needed.

SQX DECODING

Playing many locally stored media files can be difficult due to processor limitations. However, WallControl 10 has the ability to decode media files by using ActiveSQX cards. By assigning media to "Decode via SQX" Datapath and WallControl 10 offer more scale allowing lots of media files to be decoded by SQX cards at once. Each ActiveSQX card is capable of decoding 6 Full HD videos or 3 4K 30 videos or a single 4K 60 video that uses H264 compression, to get more media onto the wall simply add another ActiveSQX card into the system.

SOURCE STREAMING

WallControl 10 Pro users can now stream captured Vision sources over the local network to a Datapath ActiveSQX card or any standard RTSP decoding software (such as VLC) for remote monitoring, processing or recording.

ANY SOURCE ANYWHERE

WallControl 10 allows users to position any piece of content anywhere on the video wall. The content can cross multiple screens, or multiple pieces may be seen in a single screen. WallControl 10 allows content to be received from Datapath capture cards, IP streams, VNC sources, local videos and image files as well as allowing browser windows to be opened and positioned on the wall.

Advanced video wall control

IP DECODE

WallControl 10 will allow users to effectively decode IP streams using either the onboard processor or dedicated Datapath ActiveSX decode card(s).

COMPATIBILITY

Windows 7*, Windows 10.

AVAILABLE LANGUAGES

WallControl 10 software is available in Chinese, English, French, Japanese, Portuguese & Spanish.

SPECIFICATION

DECODE SUPPORT

H.264 Mpeg4 (Part 10 AVC), Mpeg4 Part 2 & MJPEG

INTERNET PROTOCOL

IPv4, IPv6

DE-INTERLACING

Supported

STREAMING PROTOCOLS

HTTP, RTSP, & MPEG2-TS support Multicast & Unicast

MODELS AVAILABLE

Order Code: WallControl 10 Standard

Fully featured WallControl software with the ability to decode up to 8 IP streams**.

Order Code: WallControl 10 Pro

As above PLUS MultiWall capability, User Rights Management and the ability to decode as many IP streams as the available hardware will allow.

DOWNLOAD

Download WallControl 10 from the Datapath website at

www.datapath.co.uk.

* WallControl 10 features from version 1.10 and above may not be supported on Windows 7

** The amount of processing power available in a system and therefore the number of simultaneous streams that can be decoded are dependent on a number of factors including any additional applications running on the system. These figures assume an Intel Core i7 system with no other active applications running.

**Datapath UK and
Corporate Headquarters**
Bemrose House, Bemrose Park,
Wayzgoose Drive, Derby,
DE21 6XQ, United Kingdom
☎ +44 (0) 1332 294 441
✉ sales-uk@datapath.co.uk

www.datapath.co.uk

Datapath North America
2490 General Armistead Avenue,
Suite 102, Norristown,
PA 19403,
USA
☎ +1 484 679 1553
✉ sales-us@datapath.co.uk

