



High efficiency Circulation Pumps



01.2024 | EX

Moving people and elements



ModuA 25-12 180 RED

Version	T2 S
Nominal width	DN 25
Flow head H max.	12 m
Overall length	180 mm
Threaded connection	G 1 1/2"
Operating pressure max.	16 bar
Media temperature min.	+15°C
Media temperature max.	+110°C
Ambient temperature	0°C to 40°C
Ambient temperature min.	0°C
Ambient temperature max.	40°C
Net weight	4.5 kg
Gross weight	5.2 kg

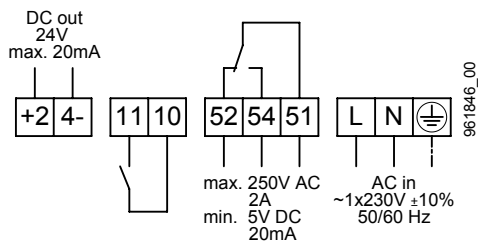
Electrical data

Voltage	1x230 V
Frequency	50/60 Hz
Power P ₁	7-181 W
Nominal current	0.08-1.36 A
Motor protection	integrated

Required operating pressure at 500m a.s.l.

at a water temp. of 75 °C	0.10 bar
at a water temp. of 95 °C	0.35 bar
at a water temp. of 110 °C	1.00 bar
for every ±100 m of altitude	±0.01 bar

Connction diagram



- +24-** 24 V DC out
- 11, 10** External OFF or external ON
- 52, 54, 51** Error or operating message
- L, N, PE** Power supply

Switch

- 1** Fault or operating message (switchable)
- 2** External OFF or external ON (switchable)
- 3** Power Limit (activatable)

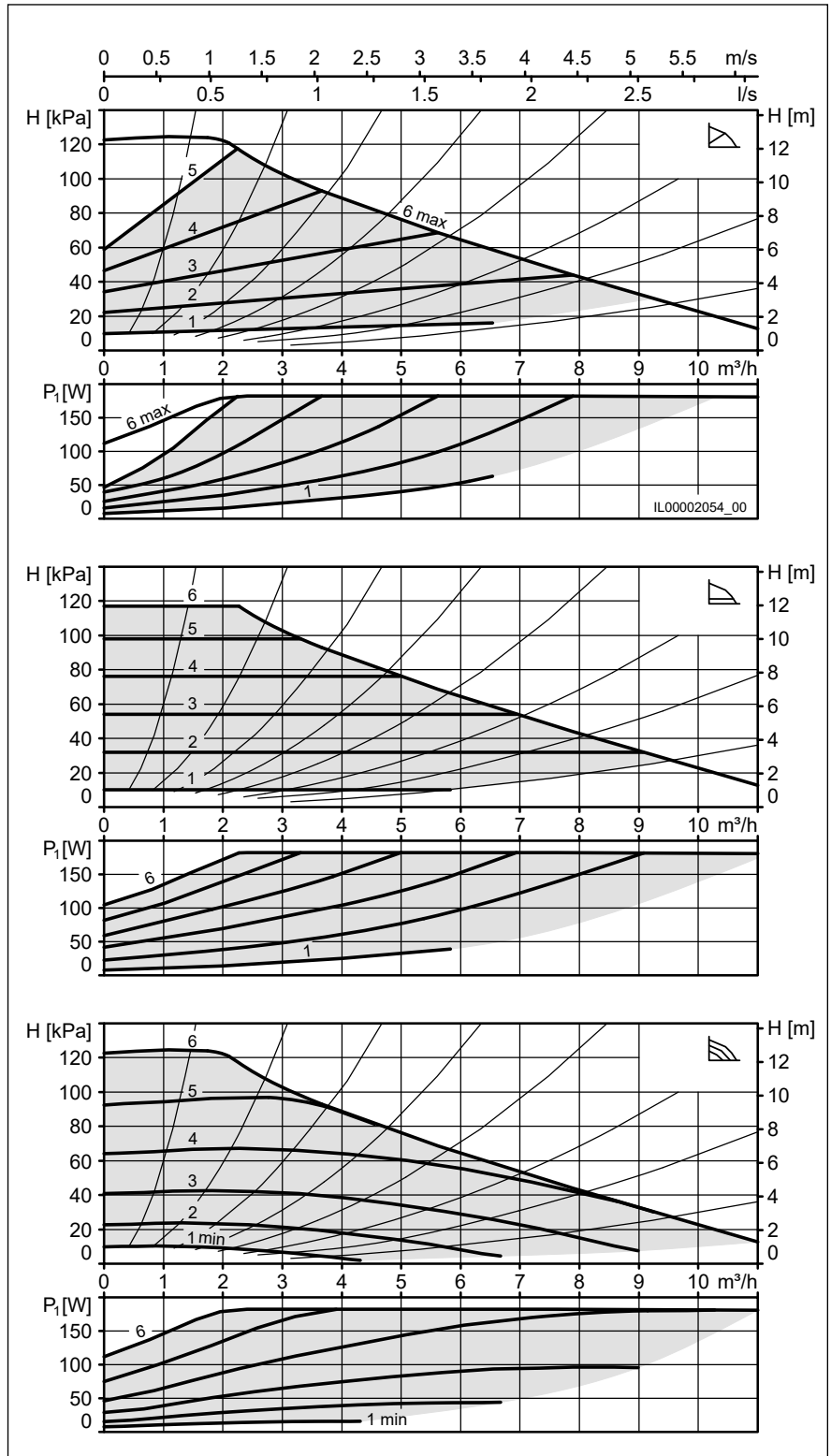
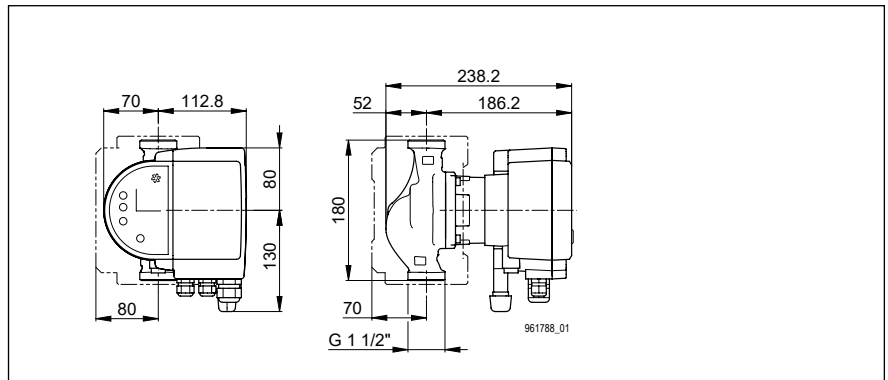
Included in the scope of delivery

- Heat insulation shell
- Biral Connector
- AFM seal

Accessories

- Biral Interface Modules

Type	ModuA 25-12 180 RED	Art. no.	7000000061
-------------	---------------------	-----------------	------------



ModuA 32-12 180 RED

ModuA 32-12 170 RED

Version	T2 S
Nominal width	DN 32
Flow head H max.	12 m
Overall length	180 170 mm
Threaded connection	G 2"
Operating pressure max.	16 bar
Media temperature min.	+15°C
Media temperature max.	+110°C
Ambient temperature	0°C to 40°C
Ambient temperature min.	0°C
Ambient temperature max.	40°C
Net weight	4.7 kg
Gross weight	5.35 kg

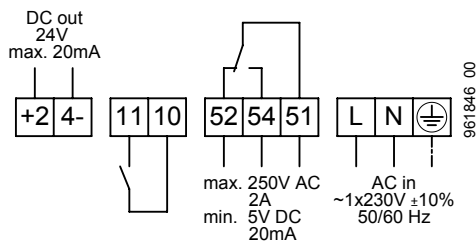
Electrical data

Voltage	1x230 V
Frequency	50/60 Hz
Power P ₁	7-182 W
Nominal current	0.08-1.36 A
Motor protection	integrated

Required operating pressure at 500m a.s.l.

at a water temp. of 75 °C	0.10 bar
at a water temp. of 95 °C	0.35 bar
at a water temp. of 110 °C	1.00 bar
for every ±100 m of altitude	±0.01 bar

Connction diagram



+24-	24 V DC out
11, 10	External OFF or external ON
52, 54, 51	Error or operating message
L, N, PE	Power supply

Switch

- 1 Fault or operating message (switchable)
- 2 External OFF or external ON (switchable)
- 3 Power Limit (activatable)

Included in the scope of delivery

- Heat insulation shell
- Biral Connector
- AFM seal

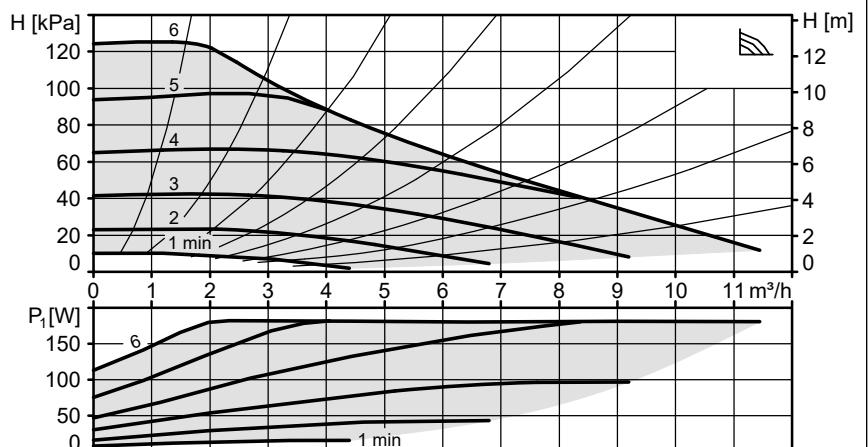
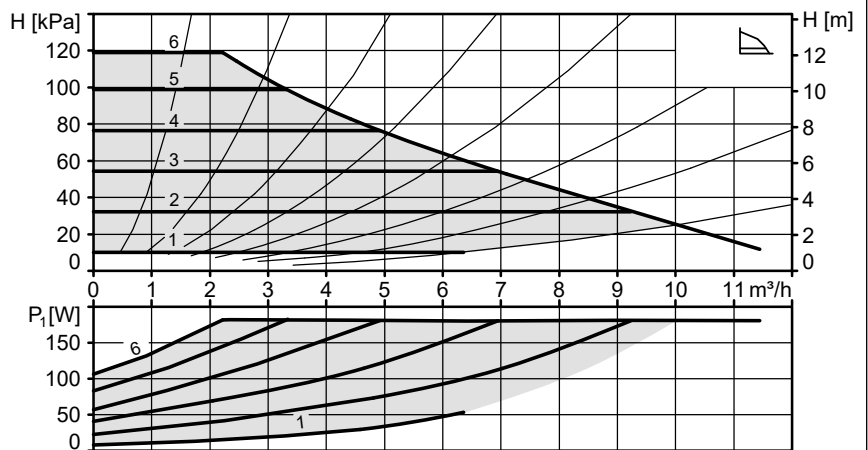
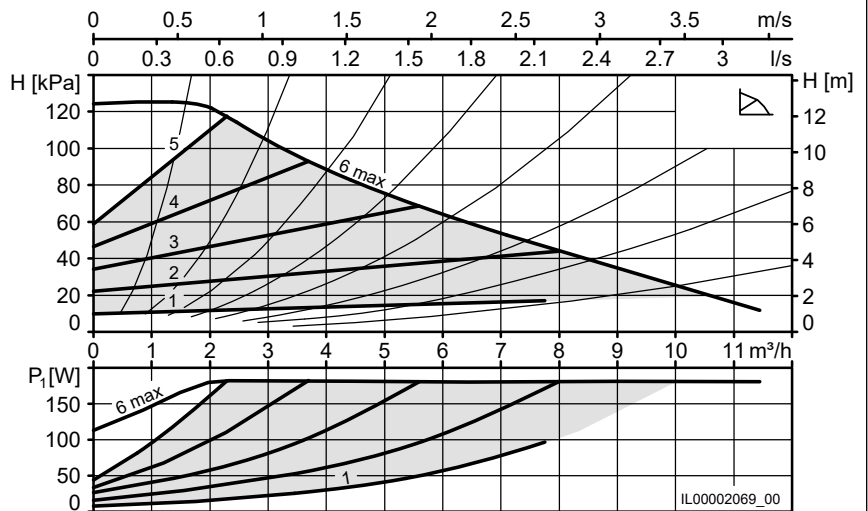
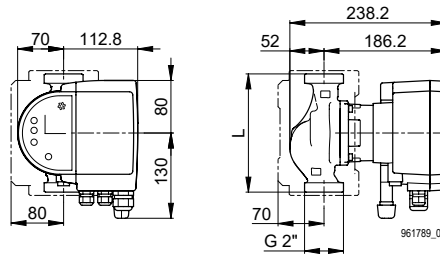
Accessories

- Biral Interface Modules

Type	Art. no.
ModuA 32-12 180 RED	7000000071
ModuA 32-12 170 RED	7000000066

ModuA 32-12 180 RED
DN 32
L = 180 mm

ModuA 32-12 170 RED
DN 32
L = 170 mm



Heating

Modula 40-18 250 RED

Version	T2 M
Nominal width	DN 40
Flow head H max.	18 m
Overall length	250 mm
Flanged connection	PN 6-16
Operating pressure max.	16 bar
Media temperature min.	+15°C
Media temperature max.	+110°C
Ambient temperature	0°C to 40°C
Net weight	16.1 kg
Gross weight	19.5 kg

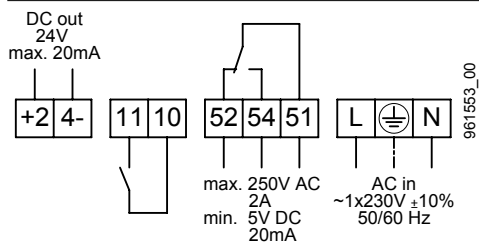
Electrical data

Voltage	1x230 V
Frequency	50/60 Hz
Power P_1	16-600 W
Nominal current	0.17-2.70 A
Motor protection	integrated

Required operating pressure at 500m a.s.l.

at a water temp. of 75 °C	0.10 bar
at a water temp. of 95 °C	0.50 bar
at a water temp. of 110 °C	1.00 bar
for every ± 100 m of altitude	± 0.01 bar

Connction diagram



+24-	24 V DC out
11, 10	External OFF or external ON
52, 54, 51	Error or operating message
L, N, PE	Power supply

Switch

- 1 Fault or operating message (switchable)
- 2 External OFF or external ON (switchable)
- 3 Power Limit (activatable)

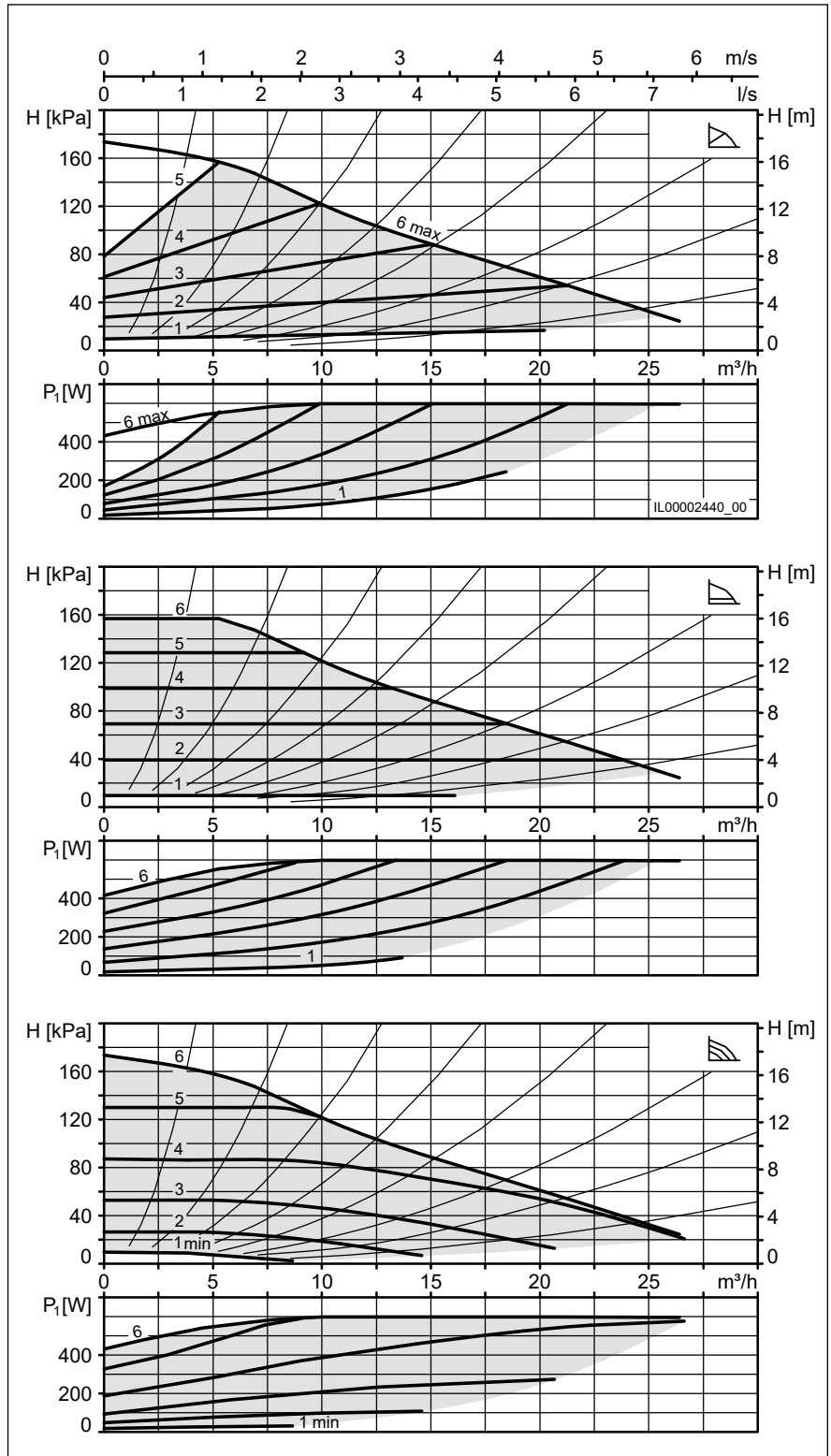
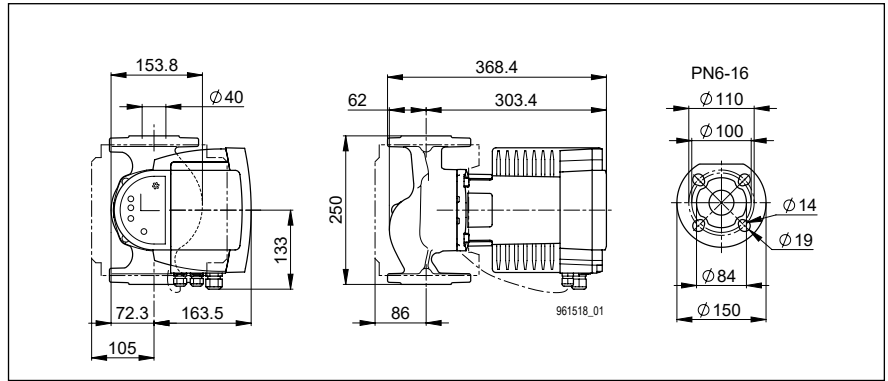
Included in the scope of delivery

- Heat insulation shell
- Sealing set for flange PN 6

Accessories

- Biral Interface Modules
- Seal kit for flanges PN10/PN16
- Set for recessed installation of electronics

Type	Art. no.
Modula 40-18 250 RED	7000000080



ModuA 50-18 270 RED

Version	T2 M
Nominal width	DN 50
Flow head H max.	18 m
Overall length	270 mm
Flanged connection	PN 6-16
Operating pressure max.	16 bar
Media temperature min.	+15°C
Media temperature max.	+110°C
Ambient temperature	0°C to 40°C
Net weight	19 kg
Gross weight	22.5 kg

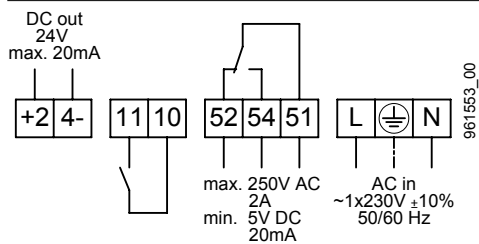
Electrical data

Voltage	1x230 V
Frequency	50/60 Hz
Power P ₁	21-767 W
Nominal current	0.24-3.44 A
Motor protection	integrated

Required operating pressure at 500m a.s.l.

at a water temp. of 75 °C	0.70 bar
at a water temp. of 95 °C	1.20 bar
at a water temp. of 110 °C	1.70 bar
for every ±100 m of altitude	±0.01 bar

Connction diagram



+24-	24 V DC out
11, 10	External OFF or external ON
52, 54, 51	Error or operating message
L, N, PE	Power supply

Switch

- 1 Fault or operating message (switchable)
- 2 External OFF or external ON (switchable)
- 3 Power Limit (activatable)

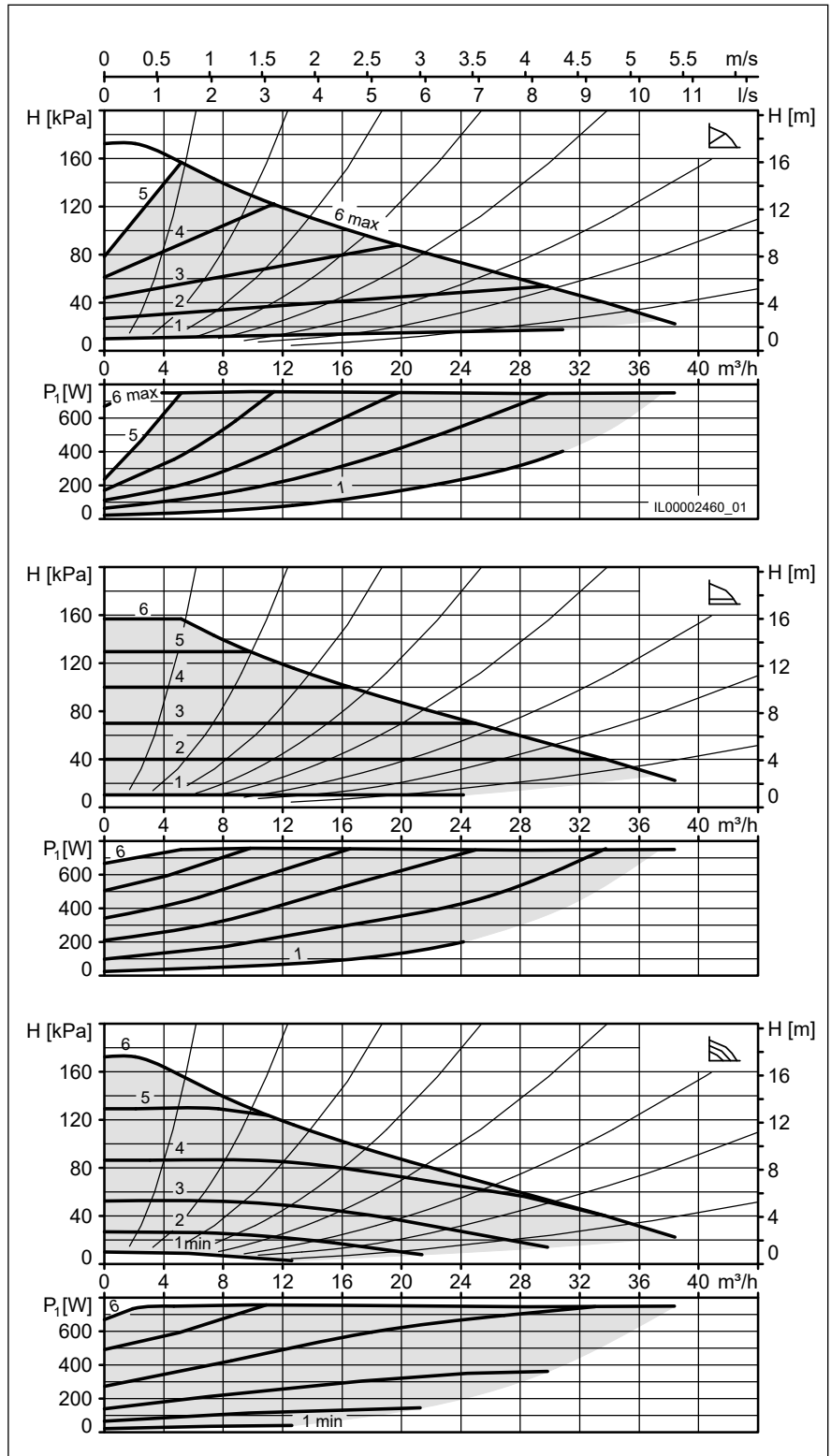
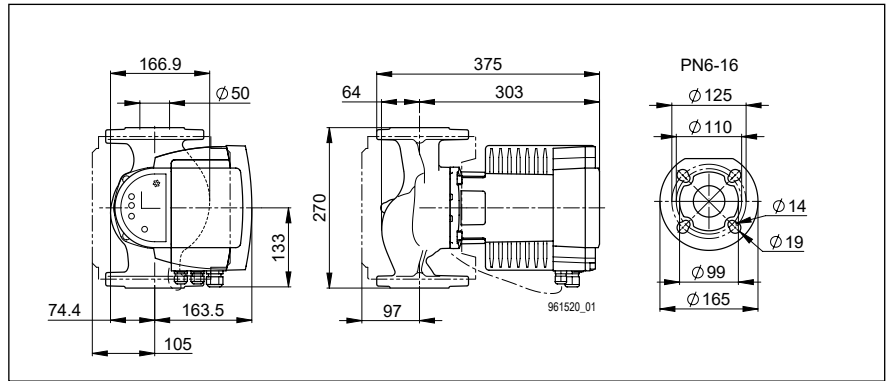
Included in the scope of delivery

- Heat insulation shell
- Sealing set for flange PN 6

Accessories

- Biral Interface Modules
- Set for recessed installation of electronics
- Seal kit for flanges PN10/PN16

Type	Art. no.
ModuA 50-18 270 RED	7000000085



Heating

Modula 65-15 340 RED

Version	T2 L
Nominal width	DN 65
Flow head H max.	15 m
Overall length	340 mm
Flanged connection	PN 6-16
Operating pressure max.	16 bar
Media temperature min.	+15°C
Media temperature max.	+110°C
Ambient temperature	0°C to 40°C
Net weight	21.5 kg
Gross weight	29 kg

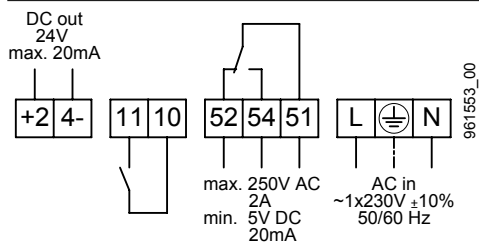
Electrical data

Voltage	1x230 V
Frequency	50/60 Hz
Power P ₁	30-1343 W
Nominal current	0.27-6.08 A
Motor protection	integrated

Required operating pressure at 500m a.s.l.

at a water temp. of 75 °C	0.70 bar
at a water temp. of 95 °C	1.20 bar
at a water temp. of 110 °C	1.70 bar
for every ±100 m of altitude	±0.01 bar

Connction diagram



- +24-** 24 V DC out
- 11, 10** External OFF or external ON
- 52, 54, 51** Error or operating message
- L, N, PE** Power supply

Switch

- 1** Fault or operating message (switchable)
- 2** External OFF or external ON (switchable)
- 3** Power Limit (activatable)

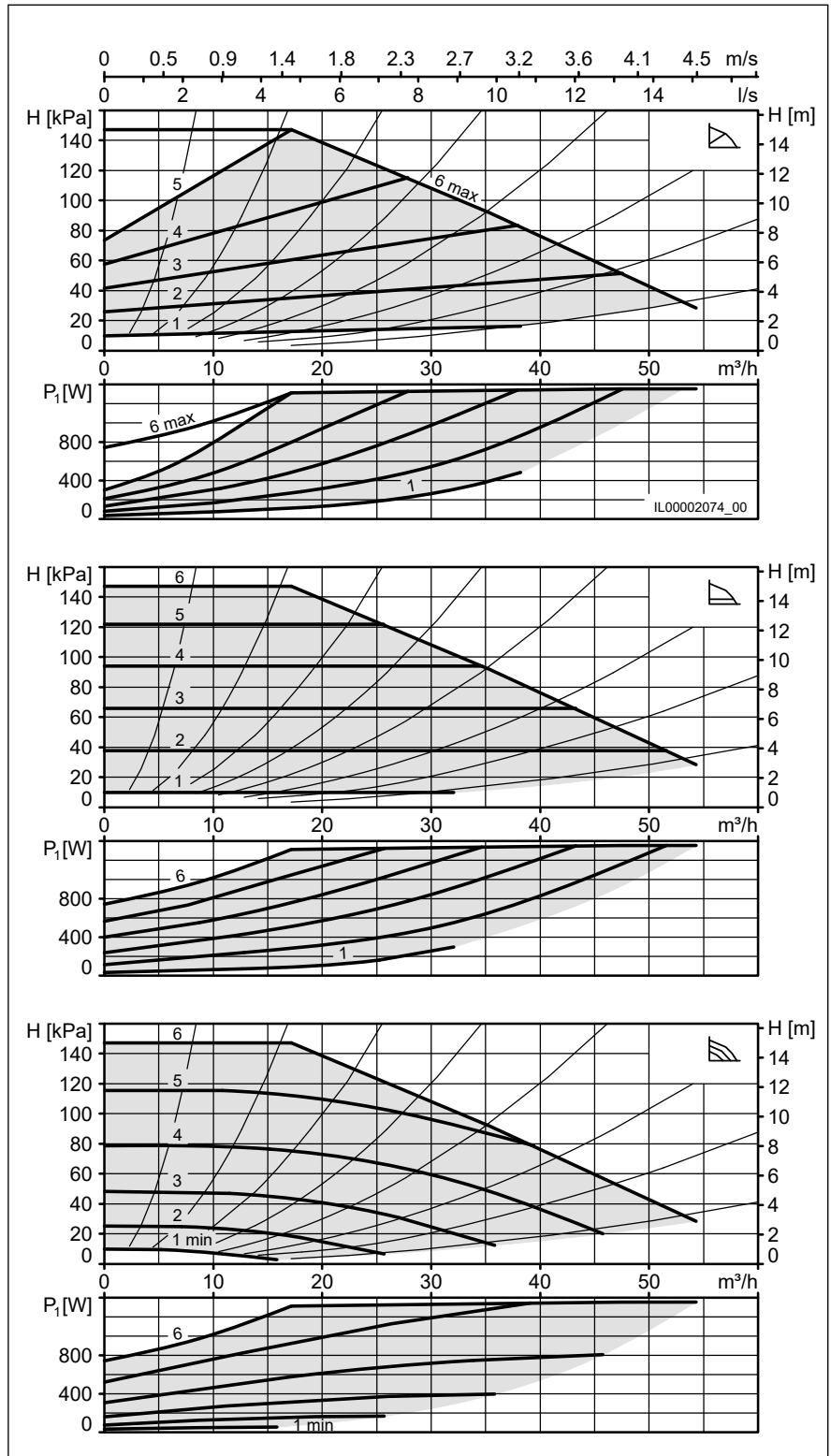
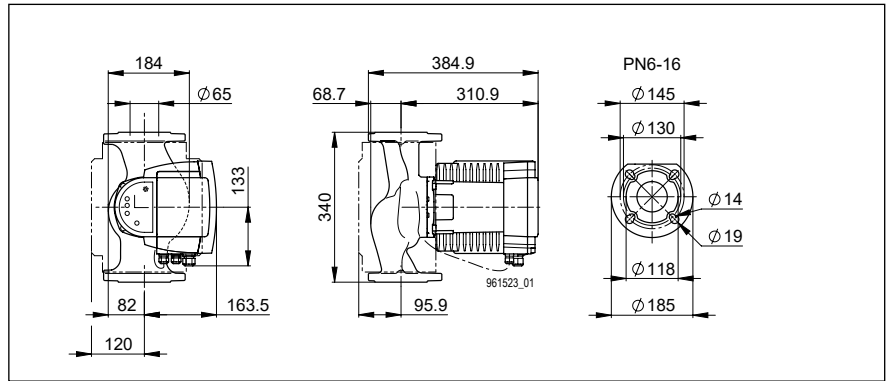
Included in the scope of delivery

- Heat insulation shell
- Sealing set for flange PN 6

Accessories

- Biral Interface Modules
- Set for recessed installation of electronics
- Seal kit for flanges PN10/PN16

Type	Art. no.
Modula 65-15 340 RED	7000000054



Heating

PrimAX 25-8 180 RED
PrimAX 32-8 180 RED
PrimAX 32-8 170 RED
PrimAX 15-8 130 RED
PrimAX 25-8 130 RED

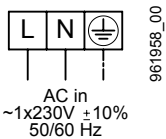
Version	T2
Nennweite	DN 32 DN 15 DN 25
Förderhöhe H max.	7.5 m
Einbaulänge	180 170 130 mm
Gewindeanschluss	G 2" G 1" G 1 1/2"
Betriebsdruck max.	10 bar
Mediumtemperatur min.	+ 2°C
Mediumtemperatur max.	+110°C
Umgebungstemperatur	0°C bis 40°C
Nettogewicht	2 2.1 1.8 kg
Bruttogewicht	2.2 2.3 2 kg

Elektrodaten

Anschlussspannung	1x230 V
Frequenz	50/60 Hz
Aufnahmeleistung P ₁	3-50 W
Nennstrom	0.03-0.41 A
Motorschutz	integriert

Erforderlicher Betriebsdruck bei 500m über Meer

bei 75°C Wassertemperatur	0.05 bar
bei 90°C Wassertemperatur	0.28 bar
bei 110°C Wassertemperatur	1.08 bar
pro ±100 m Höhe	0.01 bar

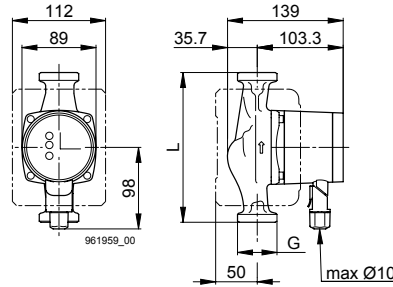
Anschlusschema

L, N, PE Netzanschluss

Im Lieferumfang enthalten

- Wärmedämmschale
- Biral Connector und Winkelstecker
- Dichtung AFM

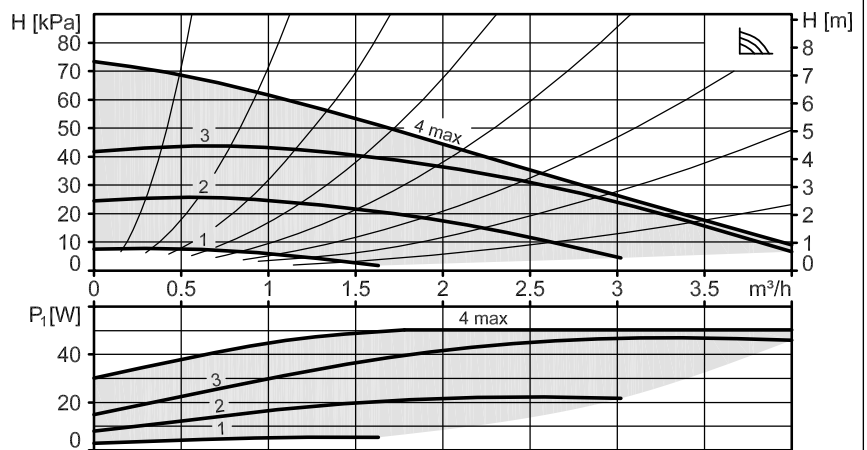
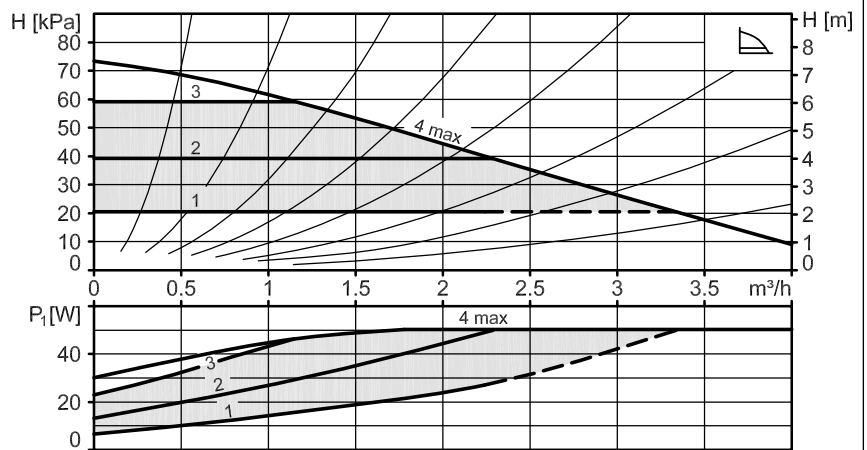
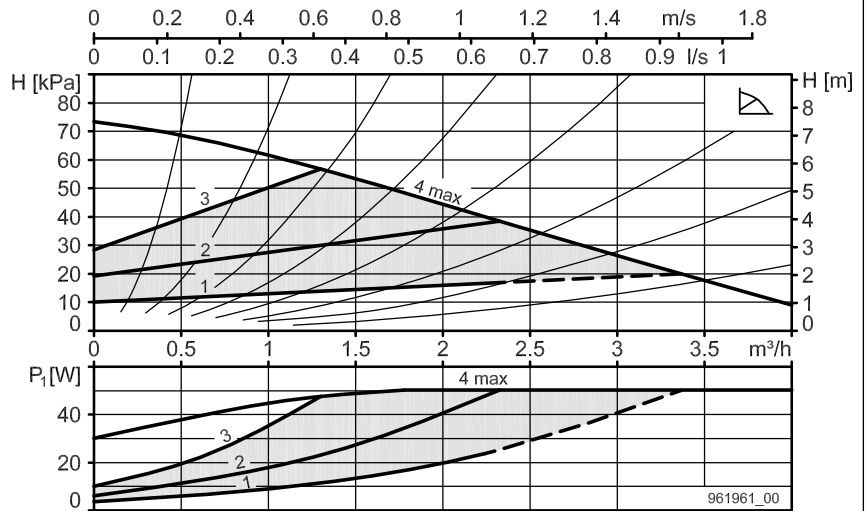
Bezeichnung
Art. Nr.

PrimAX 25-8 180 RED	7000001833
PrimAX 32-8 180 RED	7000001838
PrimAX 32-8 170 RED	7000001843
PrimAX 15-8 130 RED	7000001848
PrimAX 25-8 130 RED	7000001853



PrimAX 25-8 180 RED
DN 25
L = 180 mm
G = 1 1/2"
PrimAX 32-8 170 RED
DN 32
L = 170 mm
G = 2"
PrimAX 25-8 130 RED
DN 25
L = 130 mm
G = 1 1/2"

PrimAX 32-8 180 RED
DN 32
L = 180 mm
G = 2"
PrimAX 15-8 130 RED
DN 15
L = 130 mm
G = 1"



EN EU Declaration of Conformity

We Biral AG declare under our sole responsibility that the products

ModulA... RED, ModulA-D... RED

ModulA... BLUE

to which this declaration relates, are in conformity with the Council Directives on the approximation of the laws of the EC Member States relating to:

- Machinery (2006/42/EG) Standard: 12100-1:2010
 - Electrical equipment designed for use within certain voltage limits (2014/35/EU) Norms: EN 60335-1:2012, EN 60335-2-51:2003 + A1:2008 + A2:2012
 - Electromagnetic compatibility (2014/30/EU) Norms: EN 61000-6-2:2005, EN 61000-6-3:2007
 - Only for types marked with the EEL. (See the pump nameplate):
- Ecodesign (2009/125/EC) Circulator Pumps Commission Regulation No 641/2009 Standards: EN 16297-1:2012, EN16297-2:2012

NL EG-Conformiteitsverklaring

Wij Biral AG verklaren geheel onder eigen verantwoordelijkheid dat de producten

ModulA... RED, ModulA-D... RED

ModulA... BLUE

waarop deze verklaring betrekking heeft in overeenstemming zijn met de Richtlijnen van de Raad inzake de onderlinge aanpassing van de wetgevingen van de EG Lid-Staten betreffende

- Machines (2006/42/EG) Norm: EN 12100-1:2010
 - Elektrisch materiaal voor gebruik binnen bepaalde spanningsgrenzen (2014/35/EU) Normen: EN 60335-1:2012, EN 60335-2-51:2003 + A1:2008 + A2:2012
 - Elektromagnetische compatibiliteit (2014/30/EU) normen: EN 61000-6-2:2005, EN 61000-6-3:2007
 - Ecodesign (2009/125/EC)
- Circulatiepompen: Verordening nr. 641/2009 van de Commissie. Normen: EN 16297-1:2012, EN 16297-2:2012 (geldt alleen voor types die met de ETI zijn gemarkeerd. EEL staat voor Energy Efficiency Index, zie bedrijfsnaamplaatje).

EN-UK UK-Declaration of Conformity

We Biral AG declare under our sole responsibility that the products

ModulA... RED, ModulA-D... RED

ModulA... BLUE

to which this declaration relates, are in conformity with the Council Directives on the approximation of the laws of the UK Member States relating to:

- UK S.I. 2008/1597 Supply of Machinery (Safety) Regulation 2008
 - Electrical equipment designed for use within certain voltage limits (2014/35/EU) Norms: EN 60335-1:2012, EN 60335-2-51:2003 + A1:2008 + A2:2012
 - UK S.I. 2016/1091 Elektromagnetic compatibility Regulation 2016
 - Norms: EN 61000-6-2:2005, EN 61000-6-3:2007
 - Only for types marked with the EEL. (See the pump nameplate):
- Ecodesign (2009/125/EC) Circulator Pumps Commission Regulation No 641/2009 Standards: EN 16297-1:2012, EN16297-2:2012

ES Declaración de conformidad CE

Nosotros Biral AG declaramos bajo nuestra única responsabilidad que los productos

ModulA... RED, ModulA-D... RED

ModulA... BLUE

son conformes con las Directivas del Consejo relativas a la aproximación de las legislaciones de los Estados Miembros de la CE sobre

- Máquinas (2006/42/CE)
 - Norma: EN 12100-1: 2010
 - Material eléctrico destinado a utilizarse con determinadas límites de tensión (2014/35/EU) Normas: EN 60335-1:2012, EN 60335-2-51:2003 + A1:2008 + A2:2012
 - Compatibilidad electromagnética (2014/30/EU) Normas: EN 61000-6-2:2005, EN 61000-6-3:2007
 - Únicamente a las circuladoras marcadas con el EEL. (Véase la placa de características):
- Diseño ecológico (2009/125/EC)
- Bombas circuladoras: Reglamento de la Comisión no 641/2009. Normas: EN 16297-1:2012, EN16297-2:2012

Münsingen, 1st November 2022



Roger Steuri
Head of Product Development/Management

Person authorised to compile technical file and empowered to sign the EC declaration of conformity.

Biral AG

Südstrasse 10
CH-3110 Münsingen
Phone +41 31 720 90 00
Fax +41 31 720 90 10
info@biral.ch
www.biral.ch



DE Konformitäts-Erklärung

Wir Biral AG erklären in alleiniger Verantwortung, dass die Produkte **PrimAX** auf die sich diese Erklärung bezieht, mit folgenden Richtlinien des Rates zur Angleichung der Rechtsvorschriften der EU-Mitgliedstaaten übereinstimmen.

IT Dichiarazione di conformità

Noi Biral AG dichiariamo sotto la nostra esclusiva responsabilità che i prodotti **PrimAX** ai quali questa dichiarazione si riferisce, sono conformi alle direttive del Consiglio, riguardo l'adeguamento delle prescrizioni di legge degli stati membri CE.

NL Verklaring van conformiteit

Wij verklaren onder uitsluitende verantwoordelijkheid van Biral AG, dat de **PrimAX**-producten waarop deze verklaring betrekking heeft, overeenstemmen met de volgende richtlijnen van de Raad betreffende de onderlinge aanpassing van de wetgevingen van de lidstaten van de EU.

RO Declarația de conformitate

Noi, Biral AG, declarăm pe proprie răspundere că produsele **PrimAX** la care se referă această declarație corespund cu următoarele Directive ale Consiliului pentru armonizarea prevederilor legale ale statelor membre EU.

GR Δήλωση Συμμόρφωσης

Εμείς, η BIRAL AG δηλώνουμε με αποκλειστική ευθύνη μας ότι το προϊόν μας **PrimAX** με το οποίο σχετίζεται η δήλωση αυτή, είναι σύμφωνο με τις οδηγίες του Συμβουλίου για την προσέγγιση των νομοθεσιών των κρατών μελών της ΕΕ.

FR Déclaration de conformité

Nous Biral AG déclarons sous notre seule responsabilité que les produits **PrimAX** auxquels se réfère cette déclaration sont conformes aux Directives du Conseil des législations des États membres de l'UE.

EN Declaration of conformity

At Biral AG we declare under our sole responsibility that the **PrimAX** products, to which this declaration refers, are in accordance with the following guidelines of the council for the approximation of laws of the EU member states.

ES Declaración de conformidad

Nosotros Biral AG declaramos bajo nuestra única responsabilidad que los productos **PrimAX** a los cuales se refiere esta declaración son conformes con las Directivas del Consejo relativas a la aproximación de las legislaciones de los Estados Miembros de la EU sobre.

PL Deklaracja zgodności

My - firma Biral AG - oświadczamy na własną odpowiedzialność, że produkty **PrimAX** do których odnosi się niniejsza deklaracja, są zgodne z dyrektywami Rady w sprawie zbliżenia ustawodawstw Państw Członkowskich UE.

РУС Декларация соответствия

Мы, компания Biral AG, принимая на себя полную ответственность, заявляем, что продукция **PrimAX** к которой относится данное заявление, удовлетворяет требованиям Директивы Совета ЕС по согласованию правового регулирования государств-членов ЕС относительно.

