

meriT Trails:
Consistent clinical safety & efficacy in more than 1650 patients up to 5 years.

meriT-I	meriT-II	meriT-III
<ul style="list-style-type: none"> Single center, FIM 30 Patients(30Lesions) 8-month angiographic FU 2-year clinical FU <p>Key results (1-yr. n=28)</p> <ul style="list-style-type: none"> ▲ B2/C: 76.7% ▲ MACE: 0% ▲ TLR: 0% ▲ ST: 0% <p>1-year: Dani S, Costa RA, Joshi H, et al. EuroIntervention 2013;9:493-500</p>	<ul style="list-style-type: none"> Multicenter (11 centers) 250 patients(355 lesion) 8-month angiographic FU 5-year clinical FU <p>Key results (1-yr. n=214)</p> <ul style="list-style-type: none"> ▲ B2/C: 63.4% ▲ MACE: 8.9% ▲ TLR: 6.1% ▲ ST: 0.5% <p>1-year: Seth A, Costa RA, Kaul U, et al. Asialntervention 2016;2:19-27</p>	<ul style="list-style-type: none"> Multicenter (15 centers) 1161 patients(1312 lesions) Real-world registry 1-year clinical FU <p>Key results (1-yr.)</p> <ul style="list-style-type: none"> ▲ 41.1% diabetics ▲ 52.5 % hypertensive ▲ MACE: 2.35% ▲ TLR: 0.5% ▲ ST: 0.1% <p>1-year: Jain RK, Chakravarthi P, Shetty R, et al. Indian Heart J 2016;68:599-603</p>

BioMime™ TECHNICAL SPECIFICATIONS

STENT

Stent Material	: Cobalt Chromium (L605)
Strut Thickness	: 65µm (0.065mm or 0.026")
Stent Diameter (mm)	: 2.00, 2.25, 2.50, 2.75, 3.00, 3.50, 4.00, 4.50
Stent Length (mm)	: 8, 13, 16, 19, 24, 29, 32, 37, 40, 44, 48
Mean Recoil	: 3.38%
Mean Foreshortening	: 0.29%

DRUG/POLYMER

Drug	: Sirolimus
Equivalent Drug Dose	: 1.25 µg/ mm ²
Polymer	: Biodegradable & Biocompatible (PLLA + PLGA)

DELIVERY SYSTEM

Delivery System	: Rapid Exchange
Nominal Pressure	: 9 atm (Refer IFU)
Rated Burst Pressure	: Rated Burst Pressure: 14/16 atm*
*RBP 14 atm for 4.50 mm diameter, all lengths.	
*RBP 14 atm for all diameter with length >40mm. (Refer IFU for more details)	
Balloon Overhang	: ≤ 0.5 mm
Shaft Outer Diameter	: Proximal: 2.13 F
	: Distal: 2.7 F (Refer IFU for more details)

Radiopaque Markers	: Two Platinum / Iridium Markers
Usable Catheter Length	: 142 cm (Refer IFU for more details)
Shaft Outer Profile	:
Proximal 1.98F (All balloon Dia with length <41mm)	
Proximal 2.13F (All balloon Dia with length >41mm)	
Distal 2.4F (2.00 mm Dia with length <41mm)	
Distal 2.7F (2.00 mm Dia with length > 41mm, 2.25 to 4.50 mm Dia; all length)	
Guide Catheter Compatibility	: 5F (Min. I. D. 0.056" / 1.42 mm)
Tip Entry Profile	: 0.016"

Crossing Profile

Stent Diameter	Crossing Profile
2.00 mm	0.83mm/0.033"
2.25 mm	0.85mm/0.033"
2.50 mm	0.91mm/0.036"
2.75 mm	0.98mm/0.039"
3.00 mm	0.99mm/0.039"
3.50 mm	1.06mm/0.042"
4.00 mm	1.16mm/0.046"
4.50 mm	1.19mm/0.047"

Max. Guidewire : 0.014" (0.36)



More to Life

Manufacturer
Meril Life Sciences Pvt. Ltd.
Survey No. 135/139, Bilakhia House,
Muktanand Marg, Chala,
Vapi 396 191,
Gujarat, India.
T: +91 260 240 8000

Meril Life Sciences Pvt. Ltd.
301, A - Wing, Business Square,
Chakala, Andheri Kurla Road,
Andheri East, Mumbai 400 093
T: + 91 22 39350700
F: + 91 22 39350777
E: askinfo@merillife.com

Meril, Inc.
2436 Emrick Boulevard,
Bethlehem, PA - 18020
T: + 610 500 2080
F: + 610 317 1672

Meril South America
Doc Med LTDA Al. dos Tupiniquins,
1079 - Cep. 04077-003 - Moema,
Sao Paulo, Brazil.
T: +55 11 3624 5935
F: +55 11 3624 5936

Meril GmbH.
Bornheimer Strasse 135-137,
D-53119 Bonn,
Germany.
T: +49 228 7100 4000
F: +49 228 7100 4001

Meril Tibbi Cihazlar
Meril Tibbi Cihazlar İmalat ve Ticaret A.Ş.
İçeranköy Mah. Çetinkaya Sok. Prestij Plaza No:28
Kat:4 Ataşehir, 34752
İstanbul / Turkey
T: +90 216 641 44 24
F: +90 216 641 44 25

Meril China Co. Ltd.
Room 2301B, 23F, Lixin Plaza,
No 90, South Hubin Road,
Xiamen China
T: 0086-592-5368505
F: 0086-592-5368519

Meril SA Pty. Ltd.
102, 104, S101 and S102,
Boulevard West Office Park,
142 Western Service Road,
Erf 813 Woodmead Extension 17
Sandton, Johannesburg – 2191
South Africa
T: +27 11 465-2049
F: +27 86 471 7941

Meril Medical LLC.
Nauchnyi Proezd 19,
Moscow, Russia – 117 246.
Office - +7 495 772 7643

EU representative.
Obelis S.A.Bd, General Wahis 53,
1030, Brussels, Belgium.
T: +32 2 732 5954
F: +32 2 732 6003
E mail: obelis.net

E askinfo@merillife.com
W www.merillife.com



For the use of a Registered Medical Practitioner of Hospital or Laboratory only

biomime™

Sirolimus Eluting Coronary Stent System

Delivered As Desired



BioMime™ ORDERING INFORMATION

Dia/Length	8 mm	13 mm	16 mm	19 mm	24 mm	29 mm
2.00 mm	-	BIO20013	BIO20016	BIO20019	BIO20024	BIO20029
2.25 mm	BIO22508	BIO22513	BIO22516	BIO22519	BIO22524	BIO22529
2.50 mm	BIO25008	BIO25013	BIO25016	BIO25019	BIO25024	BIO25029
2.75 mm	BIO27508	BIO27513	BIO27516	BIO27519	BIO27524	BIO27529
3.00 mm	BIO30008	BIO30013	BIO30016	BIO30019	BIO30024	BIO30029
3.50 mm	BIO35008	BIO35013	BIO35016	BIO35019	BIO35024	BIO35029
4.00 mm	BIO40008	BIO40013	BIO40016	BIO40019	BIO40024	BIO40029
4.50 mm	BIO45008	BIO45013	BIO45016	BIO45019	BIO45024	BIO45029

Dia/Length	32 mm	37 mm	40 mm	44 mm	48 mm
2.00 mm	BIO20032	BIO20037	BIO20040	BIO20044	BIO20048
2.25 mm	BIO22532	BIO22537	BIO22540	BIO22544	BIO22548
2.50 mm	BIO25032	BIO25037	BIO25040	BIO25044	BIO25048
2.75 mm	BIO27532	BIO27537	BIO27540	BIO27544	BIO27548
3.00 mm	BIO30032	BIO30037	BIO30040	BIO30044	BIO30048
3.50 mm	BIO35032	BIO35037	BIO35040	BIO35044	BIO35048
4.00 mm	BIO40032	BIO40037	BIO40040	BIO40044	BIO40048
4.50 mm	BIO45032	BIO45037	BIO45040	BIO45044	BIO45048

Contact your country local Meril sales representative for availability of sizes highlighted in Yellow

BioMime™ is a registered trademark of Meril Life Sciences Pvt. Ltd.

meriT-V RCT Non-Inferiority of BioMime SES versus XIENCE EES Proven

Prospective | Randomized | Multicenter Trial

12 sites in Europe (Netherlands, Belgium, UK, Spain, Latvia, Macedonia, Czech Republic & Poland) and 3 sites in Brazil

Randomization 2:1



Clinical Outcomes	9-month (n=252)	
	BioMime SES (n=168)	XIENCE SES (n=84)
MACE	5 (2.98%)	6 (7.14%)
Cardiac Death	0	0
MI	1 (0.60%)	4 (4.76%)
ID-TLR	4 (2.38%)	2 (2.38%)
ID- TVR (non-TLR)	0	0
Stent Thrombosis	0	0

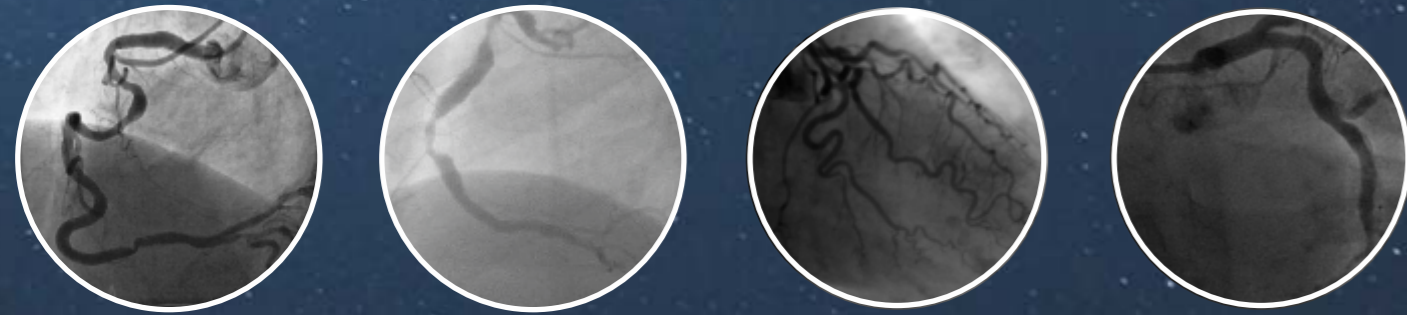
BIO-1/BROCHURE 003/MLS/202006007/GLOBAL



biomime™

Sirolimus Eluting Coronary Stent System

With BioMime™, now complex lesions can be treated with ease. Achieves acute procedural success with proven long term clinical safety and efficacy.



Hybrid cell design comprising of an intelligent mix of open and close cells resulting in excellent radial strength with a high flexibility



Reinforced hypo tube for improved hub-to-tip force transfer

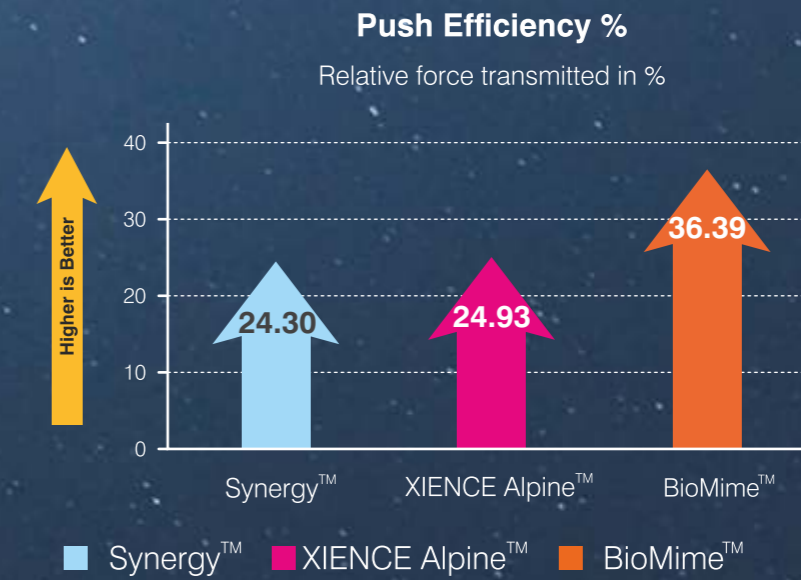
0.016" Tip Entry Profile



Elongated distal tip:
 Biomime Xepedient : 3.5 ± 0.5 mm for balloon diameter 2.25 mm to 4.50 mm,
 Taper balloon and 5.00 ± 0.5 mm for balloon diameter 2.00 mm
 Biomime Lineage : 7.00 ± 0.5 mm
 Biomime Natec : 5.20 ± 1.00 mm

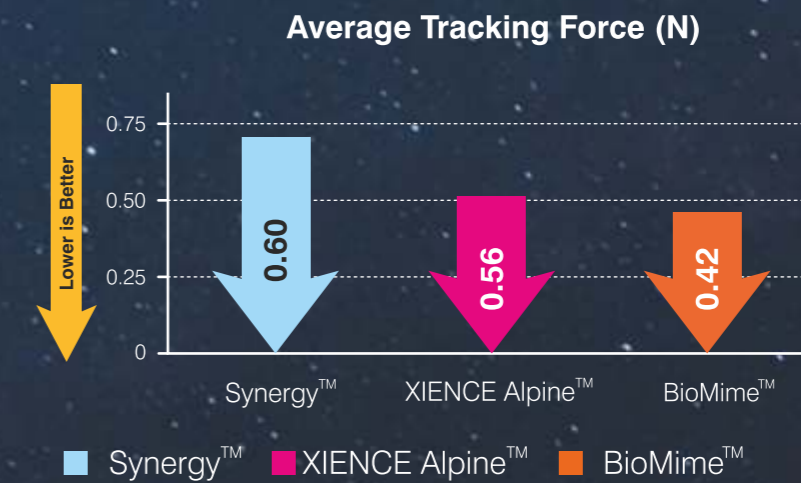
New Monolithic Delivery System for enhanced pushability and excellent kink resistance

Improved Pushability from hub-to-tip*



50%
Better Push Efficiency

Improved Trackability in difficult anatomies*



30%
Lesser Tracking Force^s

* Tests performed by and data on file at Meril Life Sciences Pvt. Ltd. XIENCE Alpine™ is a trademark of Abbott Laboratories. Synergy™ is a trademark of Boston Scientific.
^s Test performed using Lineage delivery system.

Proven BioMime™ Stent Design

- 65µm Strut Thickness for All Sizes
- Biodegradable Polymer Coating
- Sirolimus Drug Elution (1.25µg/mm²)
- Morphology Mediated Expansion

