

9. MEDICAL CARTS

OPERATING ROOM

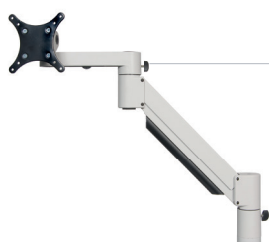
COMEG carts



- Moulded top platform
- Camera eye piece holder
- 3x Adjustable shelves
- Concealed cable management
- 4x 125mm twin castors wheels (2 with brakes)
- 2x Pushing handles
- On/Off Isolating switch panel
- Ventilated rear door with cable winders & internal documents holder
- 8-Way IEC socket
 - . 4x 2m IEC to IEC equipment cords
 - . 4x 1m IEC to IEC equipment cords
- Comeg logos on side panels and back door

Reference	Designation / Description
700800	MEDICAL CART - EU COMEG Medical cart - EU
700801	MEDICAL CART WITH TRANSF - EU COMEG Medical cart - EU with transformer
700802	MEDICAL CART - UK COMEG Medical cart - UK
700803	MEDICAL CART WITH TRANSF - UK COMEG Medical cart - UK with transformer
700804	MEDICAL CART - US COMEG Medical cart - US
700805	MEDICAL CART WITH TRANSF - US COMEG Medical cart - US with transformer

ACCESSORIES



Reference	Designation
700806	ARTICULATED ARM MAX 14KG Articulated arm with short extension (500mm) for monitor - maximum weight 14kg



Reference	Designation / Description
700807	ARTICULATED LONG ARM MAX 10KG Articulated arm with long extension (670mm) for monitor - maximum weight 10kg



Reference	Designation / Description
700808	ARTICULATED ARM MAX 17KG Articulated arm with short extension (500mm) for monitor - maximum weight 17kg



Reference	Designation / Description
700809	FIXED ARM FOR MONITOR Fixed arm for monitor



Reference	Designation / Description
700810	CO ₂ BOTTLE HOLDER Medical CO ₂ Bottle holder

9. MEDICAL CARTS

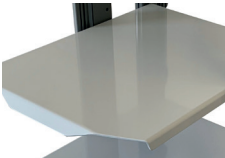
ACCESSORIES



Reference	Designation / Description
700811	DRAWER Drawer for COMEG cart



Reference	Designation / Description
700812	SERUM HOLDER Serum holder for COMEG cart



Reference	Designation / Description
700813	EXTRA SHELF 435 X 510MM Extra Shelf for COMEG cart 435 x 510mm



Reference	Designation / Description
700814	FLEXIBLE SCOPE HOLDER Flexible scope holder for COMEG cart