



Certificate of Registration

This certificate has been awarded to

Rapid Labs Limited

Unit 2, Hall Farm, Church Road, Little Bentley, Colchester, CO7 8SD, United Kingdom

in recognition of the organization's Quality Management System which complies with

EN ISO 13485: 2016

The scope of activities covered by this certificate is defined below

Design, Development, Manufacture and Supply of In-Vitro Diagnostic Products. Supply of Glass Vials and Bottles.

Certificate Number:

55321/A/0001/UK/En

Date of Issue: (Original)

09 November 2012

Date of Issue:

16 October 2018

Issue No:

8

Expiry Date:

15 October 2021

Issued by:

On behalf of the Schemes Manager





Certificate of Registration

This certificate has been awarded to

Rapid Labs Limited

Unit 2, Hall Farm, Church Road, Little Bentley, Colchester, CO7 8SD, United Kingdom

in recognition of the organization's Quality Management System which complies with

ISO 9001:2015

The scope of activities covered by this certificate is defined below

Design, Development, Manufacture and Supply of In-Vitro Diagnostic Products. Supply of Glass Vials and Bottles.

Certificate Number:

55321/B/0001/UK/En

Date of Issue: (Original)

01 February 2018

Date of Issue:

01 February 2018

Issue No:

2

Expiry Date:

31 January 2021

Issued by:

On behalf of the Schemes Manager



**Quality Diagnostic
Products**

Rapid Labs[®]



Medical Product Brochure 2022-23

www.rapidlabs.co.uk

diagnostics@rapidlabs.co.uk

Unit 2 & 2A Hall Farm Business Centre, Church Road, Little Bentley, Colchester, Essex CO7 8SD UK

Rapid Labs are an established medical diagnostics business based in the UK. We are committed to provide affordable diagnostics and medical products to everyone – regardless of location. Established in 2008, Rapid Labs manufacture and distribute quality products to labs all over the world.

Our UK facilities are ISO 9001 & 13485 certified, demonstrating our commitment to quality. Our team of dedicated specialists in R&D, production and export sales ensures all our products are delivered to a high standard and processed efficiently through customs with the correct documentation. In addition to our catalogue products we also offer a comprehensive OEM service, allowing you to sell our high quality reagents under your own brand. Please contact us if you would like further information about our OEM service.

We are proud to be an ever-expanding company, and as such are pleased to share our new products for 2022 with you. Our portfolio has evolved to include veterinary diagnostics, as well as some other exciting products for medical/research use.

Whether you are a new or returning customer, we are delighted to have you join us.

Kind Regards,

Rowland King
Managing Director
Rapid Labs Ltd

Contents

Diagnostics Section	
Blood Grouping	3-5
Cell Screening Panels	6
Agglutination Tests (Latex & Syphilis)	7
Febrile Antigens	8
ELISA Tests	9-10
Rapid Drugs of Abuse Tests	11-13
Rapid Diagnostic Tests	14-18
Urinalysis Strips	18
Antibiotic Discs & Rings & Bacterial Typing Anti-Sera	19
Dehydrated Culture Media	20-23
Veterinary Diagnostic Tests	24-25
Research Section	
RNA Stabilisation & viral inactivation	26-29
Biological Buffers and Protein Additives	30
Food Safety Testing	31
Laboratory Glassware, Vials & Closures	32-33



URS is a member of Registrar of Standards (Holdings) Ltd.



Blood Grouping Reagents

We are proud to offer a range of CE and Non-CE marked blood grouping reagents depending on your needs. Our CE-Marked range of blood grouping reagents have been developed to meet the demands for customers in territories that require a Free Sale Certificate and/or a CE Certificate as specified by their own regional registration system. CE-Marked Blood Grouping Reagents for ABOD fall into one of the most highly regulated classes of diagnostic reagents. Our non-CE marked range of blood grouping reagents offer the same quality at a reduced price, ideal for customers in countries where CE-registration is not a legal requirement. We source our raw materials from a number of UK and EU sources, enabling us to offer a constant supply at affordable levels.

Cat. No.	Product Description	Regulatory Status	Type	Pack Size
BG-A10	Anti-A	CE & Non-CE Available	Monoclonal	10 mL
BG-B10	Anti-B	CE & Non-CE Available	Monoclonal	10 mL
BG-AB10	Anti A, B	CE & Non-CE Available	Monoclonal	10 mL
BG-DBLEND10	Anti-D (IgG & IgM)	CE & Non-CE Available	Monoclonal	10 mL
BG-ABD10	Anti A, B, D (IgG & IgM) kit	CE & Non-CE Available	Monoclonal	3 x 10 mL
BG-ABOD10	Anti A, B, AB, D (IgG & IgM) kit	CE & Non-CE Available	Monoclonal	4 x 10 mL
BG-DIGM10	Anti-D IgM	Non-CE	Monoclonal	10 mL
BG-DGG10	Anti D IgG	Non-CE	Monoclonal	10 mL
BG-AHG10	Anti-Human Globulin (Coombs) Green	Non-CE	Polyspecific	10 mL
BG-AHGM10	Anti-Human Globulin (Coombs) Green	Non-CE	Monospecific	10 mL
BG-AHGC10	Anti-Human Globulin (Coombs) Clear	Non-CE	Polyspecific	10 mL
BG-AHIGGC10	Anti-Human Globulin IgG (Coombs) Clear	Non-CE	Monospecific	10 mL
BG-BSA2210	Bovine Albumin 22%	N/A	N/A	10mL
BG-BSA3010	Bovine Albumin 30%	N/A	N/A	10mL

Bulk pack sizes available for all Blood Grouping reagents



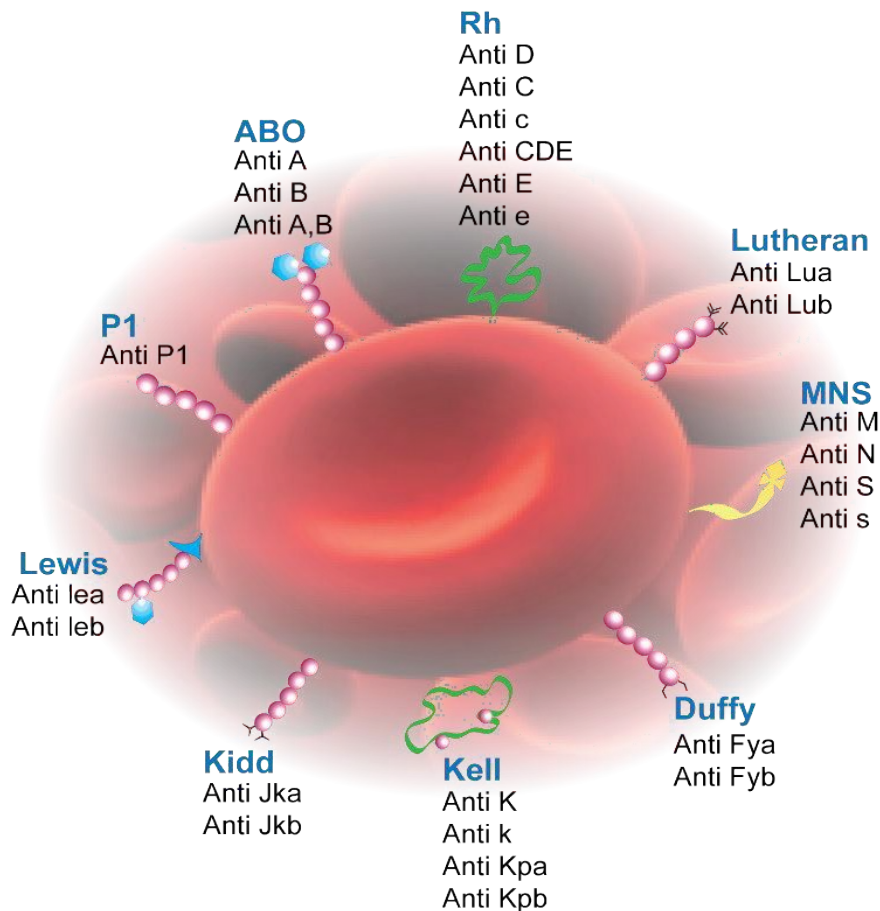


Blood Grouping Reagents

Additional CE-Marked Blood Grouping Reagents with Alternative Clones

Cat. No.	Product Description	Regulatory Status	Type	Pack Size
BC-A10	Anti-A	CE-Marked	Monoclonal	10ml
BC-A10x10	Anti-A	CE-Marked	Monoclonal	10 x 10ml
BC-B10	Anti-B	CE-Marked	Monoclonal	10ml
BC-B10x10	Anti-B	CE-Marked	Monoclonal	10 x 10ml
BC-AB10	Anti A,B	CE-Marked	Monoclonal	10ml
BC-AB10x10	Anti A,B	CE-Marked	Monoclonal	10 x 10ml
BC-D10	Anti-D (D + D ^{VI} Antigens)	CE-Marked	Monoclonal	10ml
BC-D10x10	Anti-D (D + D ^{VI} Antigens)	CE-Marked	Monoclonal	10 x 10ml
BC-ABD10	Anti A, B, D (D + D ^{VI} Antigens) kit	CE-Marked	Monoclonal	3 x 10ml
BC-ABOD10	Anti A, B, AB, D (D + D ^{VI} Antigens) kit	CE-Marked	Monoclonal	4 x 10ml
BC-AHG10	Anti-Human Globulin (Coombs)	CE-Marked	Polyspecific	10ml
BC-AHG10x10	Anti-Human Globulin (Coombs)	CE-Marked	Polyspecific	10 x 10ml

Bulk pack sizes available for all Blood Grouping reagents





Blood Grouping Reagents

Cat. No.	Product Description	Product Details	Pack Size
LECTINS			
BG-A1L5	Anti-A1	Lectin	5ml
BG-A1L10	Anti-A1	Lectin	10ml
BG-H2	Anti H	Lectin	2ml
BG-H5	Anti-H	Lectin	5ml
BG-H10	Anti-H	Lectin	10ml
BG-NL2	Anti-N	Lectin	2ml
BG-NL5	Anti-N	Lectin	5ml
RHESUS TYPING REAGENTS			
BG-BC5	Anti-C	Monoclonal	5ml
BG-BC10	Anti-C	Monoclonal	10ml
BG-LC5	Anti-c	Monoclonal	5ml
BG-LC10	Anti-c	Monoclonal	10ml
BG-CDE2	Anti-CDE	Monoclonal	2ml
BG-CDE5	Anti-CDE	Monoclonal	5ml
BG-CDE10	Anti-CDE	Monoclonal	10ml
BG-BE5	Anti-E	Monoclonal	5ml
BG-BE10	Anti-E	Monoclonal	10ml
BG-LE5	Anti-e	Monoclonal	5ml
BG-LE10	Anti-e	Monoclonal	10ml
BG-KELL5	Anti-K (Kell)	Monoclonal	5ml
BG-KELL10	Anti-K (Kell)	Monoclonal	10ml
BG-CW2	Anti-Cw	Monoclonal	2ml
BG-RHCH10	Rh Control	Monoclonal	10ml
POTENTIATORS			
BG-LISSWS10	Low Ionic Strength Solution	Working Strength	10ml
BG-LISS10	Low Ionic Strength Solution + Add	With BSA Additive	10ml
RARE TYPING REAGENTS			
BG-P1M2	Anti-P1	Monoclonal	2ml
BG-BS2	Anti-S	Monoclonal	2ml
BG-SMS2	Anti-s	Monoclonal	2ml
BG-FYA2	Anti-Fya	Monoclonal	2ml
BG-FYBH2	Anti-Fyb	Polyclonal	2ml
BG-SMKM2	Anti-k (cellano)	Monoclonal	2ml
BG-KPAH2	Anti-Kpa	Polyclonal	2ml
BG-KPBH2	Anti-Kpb	Polyclonal	2ml
BG-JKAM2	Anti-Jka	Monoclonal	2ml
BG-JKBM2	Anti -Jkb	Monoclonal	2ml
BG-LEA2	Anti-Lea	Monoclonal	2ml
BG-LEB2	Anti-Leb	Monoclonal	2ml
BG-MM2	Anti-M	Monoclonal	2ml
BG-DI2	Anti-DIA	Polyclonal	2ml
BG-PAP10	Papenzyme	Papain	10ml
BG-BROM10	Bromelite	Bromelitin	10ml

Bulk pack sizes available for all Blood Grouping Reagents. Please contact us for availability.

Antibody Screening Cell Panels

We are proud to become the international distributor for NHSBT Cell Screening Panels. New for 2020 is a range of red cell screening panels for the use in transfusion medicine, criminology and paternity testing. All reagents are CE-marked and comply with the standards laid down in the Guidelines for Blood Transfusion Services in the UK (Current edition). They are prepared to the best standards of practice in accordance with the EU IVDD directive.

All cell panels are available in a choice of preservatives: 3% Alsevers, 0.8% CellStab or 0.8% CellMedia.

Product Name	Phenotypes	Notes
2 Cell Screen	R ₁ R ₁ and R ₂ R ₂	
3 Cell Screen	R ₁ ^w R ₁ and R ₂ R ₂ and rr	
rr Screening Cells	rr + rr and r'r + r''r	
r'r, r''r subset	r'r + r''r	
ID Panel 1	R ₁ ^w R ₁ + R ₁ R ₁ + R ₂ R ₂ + r'r + r''r + rr + rr + rr + rr + rr	rr combinations represent different cell lines that react with different antibody phenotypes.
ID Panel 2	R ₁ ^v R ₁ + R ₁ R ₁ + R ₂ R ₂ + r'r + r''r + rr + rr + rr + rr + rr	

All cell panels will include a product profile, detailing the specific phenotypes they react with. An example panel profile can be seen below:

	Rh	C	D	E	c	e	C ^w	M	N	S	s	P1	Lu ^a	K	k	Kp ^a	Le ^a	Le ^b	Fy ^a	Fy ^b	Jk ^a	Jk ^b	Other														
1	R ₁ ^w	+	+	0	0	+	+	+	0	0	+	3	0	0	+	0	0	+	+	0	0	+															
2	R ₁ R ₁	+	+	0	0	+	0	+	0	+	0	2	0	+	+	0	0	+	0	+	+	0															
3	R ₂ R ₂	0	+	+	+	0	0	0	+	0	+	0	0	0	+	0	+	0	+	0	0	+															
4	r'r	+	0	0	+	+	0	0	+	0	+	3	0	0	+	0	+	0	+	0	+	0															
5	r''r	0	0	+	+	+	0	+	0	+	0	0	0	0	+	0	0	+	0	+	+	0															
6	rr	0	0	0	+	+	0	+	+	0	+	4	0	+	0	0	+	0	0	+	0	+	HLA+														
7	rr	0	0	0	+	+	0	0	+	0	+	4	+	+	+	0	0	+	+	0	+	0															
8	rr	0	0	0	+	+	0	+	0	+	0	4	0	0	+	+	0	+	+	0	0	+															
9	rr	0	0	0	+	+	0	0	+	+	0	0	0	0	+	0	0	+	0	+	+	0															
10	rr	0	0	0	+	+	0	+	0	+	0	0	0	0	+	0	+	0	0	+	0	+															
Reagent																																					
Lot. No.																																					

Example Panel Profile for ID Panel 1

Other NHSBT reagents, such as Alsevers, Cryopreserve and LISS are available, please contact us for further information.



Latex Agglutination

Bulk pack sizes available

Cat. No.	Product Description	Pack Size
RL-ASO100	ASO Latex Test Kit	100T/kit
RL-ASO50	ASO Latex Test Kit	50T/kit
RL-ASO50NA	ASO 50T Latex & Controls (no accessories)	50T
RL-ASO100NA	ASO 100T Latex & Controls (no accessories)	100T
RL-CRP100	CRP Latex Test Kit	100T/kit
RL-CRP50	CRP Latex Test Kit	50T/kit
RL-CRP50NA	CRP 50T Latex & Controls (no accessories)	50T
RL-CRP100NA	CRP 100T Latex & Controls (no accessories)	100T
RL-RA100	RA (RF) Latex Test Kit	100T/kit
RL-RA50	RA (RF) Latex Test Kit	50T/kit
RL-RA50NA	RA (RF) 50T Latex & Controls (no accessories)	50T
RL-RA100NA	RA (RF) 100T Latex & Controls (no accessories)	100T
RL-LE100	Systemic Lupus Erythematosus Latex Test Kit	100T/kit
RL-MONO50	Mononucleosis Latex Test Kit	50T/kit
RL-STA50	Staphylococcus Latex Test Kit	50T/kit
RL-RB100	Rose Bengal Agglutination Test Kit	100T/kit
RL-WR100	Waler Rose Haemagglutination Test Kit	100T/kit



Syphilis Testing

Particle agglutination, TPHA, RPR & VDRL Carbon Antigen (See also our range of ELISAs and Rapid Tests). Bulk pack sizes available.

Cat. No.	Product Description	Pack Size
RPR & VDRL		
D-RPR100	RPR Kit- 100T	100T/kit
D-RPR250	RPR Kit- 250T	250T/kit
D-RPR500	RPR Kit- 500T	500T/kit
D-RPRCARDS10	RPR Test Cards 10 well	10 x 10 well cards
RL-VDRL250	VDRL Carbon Antigen 5mL+ controls (no accessories)	5ml + 2x 1ml
RL-RPR5ML	VDRL (RPR) Carbon Antigen	5ml
RL-RPRP1ML	RPR Carbon Antigen Positive Control	1ml
RL-RPRN1ML	RPR Carbon Antigen Negative Control	1ml
TPHA Particle Agglutination		
RL-TPHA100	TPHA	100T kit
RL-TPHA200	TPHA	200T kit
RL-TPHA500	TPHA	500T kit
RL-TPHA2000	TPHA for PK7200 and PK7300 analysers	2000T kit
RL-TPHA-PC-1	TPHA Positive Control	1ml
RL-TPHA-NC-1	TPHA Negative Control	1ml



Febrile Antigens

Widal kits & Controls

Bulk products available for all products

Febrile Antigens are stained bacterial antigen suspensions used to identify and measure antibodies in human sera, following infection. Bacterial infection will cause the body to produce antibodies in response to the invading pathogen. When the serum sample is mixed with a febrile antigen, the solution will agglutinate if antibodies are present, indicating infection. Febrile Antigens are also known as Widal reagents.

Brucella Febrile Antigens

Brucella are a group of Gram-negative, rod-shaped bacteria. Infection (Brucellosis) can occur in humans usually by the consumption of unpasteurised milk and/or close contact with infected farm animals. Brucella abortus is less virulent and primarily affects cattle:

Product Name	Cat. No.
Brucella abortus Febrile Antigen	F-BAA5
Brucella melitensis Febrile Antigen	F-BMA5

Proteus Febrile Antigens

Proteus is a genus of Gram-negative saprophytic bacteria. They are found in decomposing matter, manure soil, faeces and sewage. The OX-2, OX-19 and OX-k strains can cross-react with several species of the Rickettsiae bacteria:

Proteus Strain	Rickettsiae Strain	Associated Disease	Febrile Antigen	Cat No.
OX-19	Rickettsia typhi	Murine Typhus	Proteus OX-19 Febrile Antigen	F-POX195
OX-19	Rickettsia prowazekii	Epidemic Typhus		
OX-K	Orientia tsutsugamushi	Scrub Typhus	Proteus OX-k Febrile Antigen	F-POXK5
OX-2	Rickettsia rickettsia	Rocky Mountain Spotted Fever	Proteus OX-2 Febrile Antigen	F-POX25
OX-2	Rickettsia africae	African Tick-Bite Fever		
OX-2	Rickettsia japonica	Japanese Spotted Fever		

Salmonella Febrile Antigens

Salmonella is a genus of rod-shaped Gram-negative bacteria. There are over 2500 serotypes. Rapid Labs offer a range of febrile antigens for the most common serovars tested for in 5ml sizes. Serovars displaying somatic 'O' antigens are stained blue, whilst serovars displaying flagella 'H' antigens are stained red. The IgM somatic O antibody appears first and represents the initial serologic response in acute typhoid fever, while the IgG flagella H antibody usually develops more slowly but persists for longer:

Antigen Group	Serovars	Febrile Antigen	Cat No.
A	S. Paratyphi A, S. Paratyphi A var. Durazzo	Salmonella O Antigen Group A	F-SOA5
		Salmonella H Antigen Group A	F-SHA5
B	S. Paratyphi B, S. Paratyphi B var. Odense, S. Java, S. Limete	Salmonella O Antigen Group B	F-SOB5
		Salmonella H Antigen Group B	F-SHB5
C	S. Paratyphi C, S. Choleraesuis, S. Choleraesuis var. Kunzendorf, S. Decatu, S. Typhisuis	Salmonella O Antigen Group C	F-SOC5
		Salmonella H Antigen Group C	F-SHC5
D	S. Typhi, S. Ndolo	Salmonella O Antigen Group D	F-SOD5
		Salmonella H Antigen Group D	F-SHD5

Additional products

Cat. No.	Product Description	Pack Size
F-FPC1	Febrile positive control sera	1ml
F-FNC1	Febrile negative control sera	1ml
F-KIT8X5	Widal Kit Salmonella Ha,Hb,Hc,Hd,OA,OB,OC,OD.	8 x 5ml
F-KIT8X5C	Widal Kit Salmonella Ha,Hb,Hc,Hd,OA,OB,OC,OD. +ve/-ve Control	8 x 5ml + 2 x 1ml



ELISA/EIAs

Minimum order quantity of 20 kits each



Cat. No.	Product Description	Total Incubation Time	Sensitivity	Pack Size
Fever & Parasitic Diseases				
DA-DGG96	Dengue IgG ELISA Kit	45 + 45 + 15 mins	100%	96T
DA-DGIGA96	Dengue IgA ELISA Kit	45 + 45 + 15 mins	100%	96T
DA-DGM96	Dengue IgM ELISA Kit	45 + 45 + 15 mins	100%	96T
DA-HAV251	HAV IgM ELISA Kit	20 + 40 + 15 mins		96T
Sexually Transmitted Diseases				
DA-CLG96	Chlamydia IgG ELISA	30 + 30 + 15 mins		96T
DA-CLM96	Chlamydia IgM ELISA	30 + 30 + 15 mins		96T



Compact ELISAs

Our high quality Compact ELISA tests offer the same consistent reliable results at an affordable price, packaged to reduce the shipping costs.

Cat. No.	Product Description	Total Incubation Time	Sensitivity	Pack Size
Infectious Diseases				
E-101196	HIV-1/2 O	60 + 30 + 30 mins	99.9%	96T
E-128196	HIV-1/2 O Ag/Ab	60 + 30 + 30 mins	99%	96T
E-102196	HBsAg	60 + 30 + 30 mins	100%	96T
E-103196	HCV	60 + 30 + 30 mins	99%	96T
E-104196	Syphilis (TP) (IgG, IgM, IgA)	60 + 30 + 30 mins	100%	96T
E-105196	HBsAb	60 + 15 mins	10 mIU/ml	96T
E-106196	HBeAg	60 + 15 mins	2 NCU/ml	96T
E-107196	HBeAb	60 + 15 mins	4 NCU/ml	96T
DA-HBCBM753	HBcAb IgM	20 + 40 + 15 mins	97%	96T
E-108196	HBcAb TA (IgG, IgM, IgA)	60 + 15 mins	2 NCU/ml	96T
E-121196	HEV IgM	40 + 20 + 15 mins	96%	96T
DA-MESM96	Measles IgM	45 + 45 + 15 mins	98%	96T
E-123196	<i>H. pylori</i> IgM	45 + 45 + 15 mins	100%	96T
E-124196	<i>H. pylori</i> IgG	45 + 45 + 15 mins	100%	96T
ToRCH				
E-109196	Toxo IgG	30 + 30 + 15 mins		96T
E-110196	Toxo IgM	30 + 30 + 15 mins		96T
E-111196	Rubella IgG	30 + 30 + 15 mins		96T
E-112196	Rubella IgM	30 + 30 + 15 mins		96T
E-113196	CMV IgG	30 + 30 + 15 mins		96T
E-114196	CMV IgM	30 + 30 + 15 mins		96T
E-115196	HSV 1 IgG	45 + 45 + 15 mins	100%	96T
E-116196	HSV 1 IgM	30 + 30 + 15 mins	95.9%	96T
E-117196	HSV 2 IgG	45 + 45 + 15 mins	100%	96T
E-118196	HSV 2 IgM	45 + 45 + 15 mins	100%	96T
E-119196	HSV 1/2 IgG	45 + 45 + 15 mins	100%	96T
E-120196	HSV 1/2 IgM	45 + 45 + 15 mins	100%	96T

Cat. No.	Product Description	Total Incubation Time	Sensitivity	Pack Size
Thyroid				
SEK-0013	TSH	60 + 15 mins	0.04mIU/mL	96T
SEK-0044	Total T3	60 + 15 mins	0.2 nmol/L	96T
SEK-0045	Total T4	60 + 15 mins	3.0 nmol/L	96T
SEK-0037	Free T3	60 + 15 mins	0.5 pmol/L	96T
SEK-0038	Free T4	60 + 15 mins	0.75 pmol/L	96T
Hormones				
SEK-0010	FSH	60 + 15 mins	0.15 IU/L	96T
SEK-10205	hCG	60 + 15 mins	1.25 IU/L	96T
SEK-0009	LH	60 + 15 mins	0.15 IU/L	96T
SEK-0011	Prolactin	60 + 15 mins	5.0 mIU/L	96T
SEK-0002	Testosterone	120 + 15 mins	0.15nmol/L	96T
SEK-0006	Progesterone	120 + 15 mins	0.25nmol/l	96T
SEK-10235	Free beta HCG	30 + 30 + 15 mins	1.0ng/ml	96T
Tumour Markers				
SEK-0012	AFP (Alpha-Fetoprotein)	60 + 15 mins	0.9 IU/mL	96T
SEK-0057	PSA Total	60 + 15 mins	0.005 ng/mL	96T
SEK-0064	Free PSA	30 + 30 + 15 mins	0.0035ng/ml	96T
Autoimmunity				
SEK-10200	Total IgE	30 + 30 + 15 mins	3.0 IU/ml	96T

Can't find what you're looking for? Please get in touch and we will be happy to help.



Rapid Drugs of Abuse Tests

*Please specify at the time of order the cut-off value you require



Cat. No.	Product Description	Pack Size	Cut-off Value*
Urine Based Tests			
D-DOA44S50	NEW: Alprazolam (ALP)	Strips 50T	100ng/ml
D-DOA44D20	NEW: Alprazolam (ALP)	Devices 20T	100ng/ml
D-DOA45S50	NEW: Cathine (CAT)	Strips 50T	150ng/ml
D-DOA45D20	NEW: Cathine (CAT)	Devices 20T	150ng/ml
D-DOA46S50	NEW: Caffeine (CAF)	Strips 50T	1000ng/ml
D-DOA46D20	NEW: Caffeine (CAF)	Devices 20T	1000ng/ml
D-DOA47S50	NEW: Carfentanyl (CFYL)	Strips 50T	500ng/ml
D-DOA47D20	NEW: Carfentanyl (CFYL)	Devices 20T	500ng/ml
D-DOA48S50	NEW: Fluoksetamine (FKET)	Strips 50T	1000ng/ml
D-DOA48D20	NEW: Fluoksetamine (FKET)	Devices 20T	1000ng/ml
D-DOA49S50	NEW: Olanzapine (OZP)	Strips 50T	1000ng/ml
D-DOA49D20	NEW: Olanzapine (OZP)	Devices 20T	1000ng/ml
D-DOA32S50	Acetaminophen (Paracetamol) Test – Urine	Strips 50T	5000ng/ml
D-DOA32D20	Acetaminophen (Paracetamol) Test – Urine	Devices 20T	5000ng/ml
D-DOA40S50	Alcohol Test Urine	Strips 50T	
D-DOA40D50	Alcohol Test Urine	Devices 20T	
D-DOA1S50	Amphetamine (AMP) Test – Urine	Strips 50T	300, 500, 1000ng/ml
D-DOA1D20	Amphetamine (AMP) Test – Urine	Devices 20T	300, 500, 1000ng/ml
D-DOA4S50	Barbiturates (BAR) Test – Urine	Strips 50T	200, 300ng/ml
D-DOA4D20	Barbiturates (BAR) Test – Urine	Devices 20T	200, 300ng/ml
D-DOA5S50	Benzodiazepines (BZO) Test – Urine	Strips 50T	100, 200, 300, 500ng/ml
D-DOA5D20	Benzodiazepines (BZO) Test – Urine	Devices 20T	100, 200, 300, 500ng/ml
D-DOA11S50	Buprenorphine (BUP) Test – Urine	Strips 50T	5, 10ng/ml
D-DOA11D20	Buprenorphine (BUP) Test – Urine	Devices 20T	5, 10ng/ml
D-DOA8S50	Cannabinoids (THC) Test – Urine	Strips 50T	20, 25, 50, 150, 300ng/ml
D-DOA8D20	Cannabinoids (THC) Test – Urine	Devices 20T	20, 25, 50, 150, 300ng/ml
D-DOA37D40	Carisoprodol (CAR) Test – Urine	40T Device	2000ng/ml
D-DOA37S50	Carisoprodol (CAR) Test – Urine	50T Strips	2000ng/ml
D-DOA6S50	Cocaine (COC) Test – Urine	Strips 50T	100, 150, 300ng/ml
D-DOA6D20	Cocaine (COC) Test – Urine	Devices 20T	100, 150, 300ng/ml
D-DOA31S50	Cotinine (COT) Test- Urine	Strips 50T	50, 100, 200, 500ng/ml
D-DOA31D20	Cotinine (COT) Test- Urine	Devices 20T	50, 100, 200, 500ng/ml
D-DOA41S50	Diazepam (DIA) Test – Urine	Strips 50T	300ng/ml
D-DOA41D50	Diazepam (DIA) Test – Urine	Devices 20T	300ng/ml
D-DOA12S50	Ecstasy (MDMA) Test – Urine	Strips 50T	500, 1000ng/ml
D-DOA12D20	Ecstasy (MDMA) Test – Urine	Devices 20T	500, 1000ng/ml
D-DOA42S50	Fentanyl (FYL) Test – Urine	Strips 50T	10, 20ng/ml
D-DOA42D50	Fentanyl (FYL) Test – Urine	Devices 20T	10, 20ng/ml
D-DOA21S50	Gabapentin(GAB) Test Urine	Strips 50T	2000 ng/mL
D-DOA9S50	Ketamine (KET) Test – Urine	Strips 50T	100, 300, 500, 1000ng/ml
D-DOA9D20	Ketamine (KET) Test – Urine	Devices 20T	100, 300, 500, 1000ng/ml
D-DOA36D40	Kratom (KRA) Test – Urine	40T Device	2000ng/ml

Rapid Drugs of Abuse Tests

Cat. No.	Product Description	Pack Size	Cut-off Value
D-DOA36S50	Kratom (KRA) Test – Urine	50T Strips	2000ng/ml
D-DOA29S50	Lysergic Acid Diethylamide (LSD)	Strips 50T	10, 20, 50ng/ml
D-DOA29D20	Lysergic Acid Diethylamide (LSD)	Devices 20T	10, 20, 50ng/ml
D-DOA43S50	6-Monoacetylmorphine (MAM) – Urine	Strips 50T	10ng/ml
D-DOA43D50	6-Monoacetylmorphine (MAM) – Urine	Devices 20T	10ng/ml
D-DOA22D20	Meperidine (MPRD) Test Urine	Devices 20T	100 ng/mL
D-DOA22S50	Meperidine (MPRD) Test Urine	Strips 50T	100 ng/mL
D-DOA23D20	Mephedrone HCl(MEP) Test Urine	Devices 20T	100 ng/mL
D-DOA23S50	Mephedrone HCl(MEP) Test Urine	Strips 50T	100 ng/mL
D-DOA24D20	Mescaline (MES) Test Urine	Devices 20T	100, 300ng/mL
D-DOA24S50	Mescaline (MES) Test Urine	Strips 50T	100, 300ng/mL
D-DOA7S50	Methadone (MTD) Test – Urine	Strips 50T	200, 300ng/mL
D-DOA7D20	Methadone (MTD) Test – Urine	Devices 20T	200, 300ng/mL
D-DOA2S50	Methamphetamine (MET) Test – Urine	Strips 50T	300, 500, 1000ng/ml
D-DOA2D20	Methamphetamine (MET) Test – Urine	Devices 20T	300, 500, 1000ng/ml
D-DOA38S50	Morphine (MOP) Test – Urine	Strips 50T	100, 300ng/ml
D-DOA38D50	Morphine (MOP) Test – Urine	Devices 20T	100, 300ng/ml
D-DOA3S50	Opiates (OPI) Test – Urine	Strips 50T	2000ng/ml
D-DOA3D20	Opiates (OPI) Test – Urine	Devices 20T	2000ng/ml
D-DOA39S50	Oxycodone (OXY) Test – Urine	Strips 50T	100ng/ml
D-DOA39D20	Oxycodone (OXY) Test – Urine	Devices 20T	100ng/ml
D-DOA35D40	Papaverine (PAP) Test – Urine	40T Device	500ng/ml
D-DOA35S50	Papaverine (PAP) Test – Urine	50T Strips	500ng/ml
D-DOA13S50	Phencyclidine (PCP) Test - Urine	Strips 50T	25ng/ml
D-DOA13D20	Phencyclidine (PCP) Test - Urine	Devices 20T	25ng/ml
D-DOA50D40	Pregabalin (PGB) Test – Urine	40T Device	500ng/ml
D-DOA50S50	Pregabalin (PGB) Test – Urine	50T Strips	500ng/ml
D-DOA34D40	Quetiapine (QTP) Test - Urine	40T Device	1000ng/ml
D-DOA34S50	Quetiapine (QTP) Test – Urine	50T Strips	1000ng/ml
D-DOA51S50	Synthetic Marijuana (K2) Test - Urine	Strips 50T	30, 50ng/ml
D-DOA51D20	Synthetic Marijuana (K2) Test - Urine	Devices 20T	30, 50ng/ml
D-DOA33D40	Tilidine Test - Urine	40T Device	50 ng/ml
D-DOA30S50	Tramadol (TML) Test - Urine	Strips 50T	100, 200, 300ng/ml
D-DOA30D20	Tramadol (TML) Test - Urine	Devices 20T	100, 200, 300ng/ml
D-DOA10S50	Tricyclic Antidepressants (TCA) Test - Urine	Strips 50T	1000ng/ml
D-DOA10D20	Tricyclic Antidepressants (TCA) Test - Urine	Devices 20T	1000ng/ml
D-DOA25D20	Tropicamide(TRO) Test Urine	Devices 20T	350 ng/mL
D-DOA25S50	Tropicamide(TRO) Test Urine	Strips 50T	350 ng/mL
D-DOA26D20	Trazodone(TZD) Test Urine	Devices 20T	200 ng/mL
D-DOA26S50	Trazodone(TZD) Test Urine	Strips 50T	200 ng/mL
D-DOA27D20	UR-144 Test Urine	Devices 20T	25 ng/mL
D-DOA27S50	UR-144 Test Urine	Strips 50T	25 ng/mL
D-DOA28D20	Zaleplon(ZAL) Test Urine	Devices 20T	100 ng/mL
D-DOA28S50	Zaleplon(ZAL) Test Urine	Strips 50T	100 ng/mL

Rapid Drugs of Abuse Tests

Cat. No.	Product Description	Pack Size	Cut-off Value
Saliva Based Tests			
		Devices 20T	
D-DOA4D20S	NEW: Barbiturates (BAR)	Devices 20T	50ng/ml
D-DOA11D20S	NEW: Buprenorphine (BUP)	Devices 20T	10ng/ml
D-DOA31D20S	NEW: Cotinine (COT)	Devices 20T	20ng/ml
D-DOA42D20S	NEW: Fentanyl (FYL)	Devices 20T	50ng/ml
D-DOA9D20S	NEW: Ketamine (KET)	Devices 20T	50ng/ml
D-DOA43D20S	NEW: 6-MAM	Devices 20T	10ng/ml
D-DOA7D20S	NEW: Methadone (MTD)	Devices 20T	30ng/ml
D-DOA39D20S	NEW: Oxycodone (OXY)	Devices 20T	20ng/ml
D-DOA13D20S	NEW: Phencyclidine (PCP)	Devices 20T	10ng/ml
D-DOA51D20S	NEW: Synthetic Marijuana (K2)	Devices 20T	25ng/ml
D-DOA30D20S	NEW: Tramadol (TML)	Devices 20T	30ng/ml
D-DOA1D20S	Amphetamine (AMP) Test - Saliva	Devices 20T	50ng/ml
D-DOA5D20S	Benzodiazepines (BZO) Test - Saliva	Devices 20T	20ng/ml
D-DOA8D20S	Cannabinoids (THC) Test - Saliva	Devices 20T	20ng/ml
D-DOA6D20S	Cocaine (COC) Test - Saliva	Devices 20T	20ng/ml
D-DOA2D20S	Methamphetamine (MET) Test - Saliva	Devices 20T	50ng/ml
D-DOA3D20S	Opiates (OPI) Test - Saliva	Devices 20T	40ng/ml
Hair Based Tests			
D-DOA6D20H	NEW: Cocaine (COC)	20T Device	0.2ng/ml
D-DOA38D20H	NEW: Morphine (MOP)	20T Device	0.2ng/ml
D-DOA1D20H	NEW: Amphetamine (AMP)	20T Device	0.2ng/ml
D-DOA9D20H	NEW: Ketamine (KET)	20T Device	0.2ng/ml
D-DOA12D20H	NEW: Ecstasy (MDMA)	20T Device	0.2ng/ml
D-DOA4D20H	NEW: Barbiturate (BAR)	20T Device	0.2ng/ml
D-DOA5D20H	NEW: Benzodiazepine (BZO)	20T Device	0.2ng/ml
D-DOA39D20H	NEW: Oxycodone (OXY)	20T Device	0.2ng/ml
D-DOA11D20H	NEW: Buprenorphine (BUP)	20T Device	0.2ng/ml
D-DOA2D20H	Methamphetamine (MET) Test – Hair	20T Device	0.2ng/ml
D-DOA31D20H	Cotinine (COT) Test – Hair	20T Device	0.2ng/ml
D-DOAM2H	Multi-Drug 2 Parameter Test – Hair	20T Device	n/a
Multi Parameter Devices & Cups			
D-DOAM5U	DOA Multi 5 Parameter- Urine Test Device	Device 10T	
D-DOAM10U	DOA Multi 10 Parameter- Urine Test Device	Device 10T	
D-DOAM12U	DOA Multi 12 Parameter- Urine Test Device	Device 10T	
D-DOACM12	DOA Multi 12 Parameter – 1 Step Urine Cup	Device 25T	
D-DOACM12S	DOA Multi 12 Parameter – 1 Step Saliva Cup	Device 25T	
D-DOACM8K	DOA Multi 8 Parameter – 2 Step Cup		



Rapid Test Strips & Devices

Individually pouched 10-100 test strips

Individually pouched 10-40 test devices



Cat. No.	Product Description	Pack Size/Format
Infectious Diseases		
D-HAVGMD25	NEW: HAV IgG/IgM Combo – whole blood/serum/plasma	25T Device
D-ADOD20	NEW: Adenovirus pneumoniae – Swab	20T Device
D-COVAGD20SW	NEW: COVID-19 Ag – Swab	20T Device
D-COVAGD20SA	NEW: COVID-19 Ag – Saliva	20T Device
D-COVM5ND20	NEW: COVID-19/Flu A&B/RSV/Adeno/MP Combo – Nasal Swab	20T Device
D-COVD40	NEW: COVID-19 IgG/IgM – whole blood/serum/plasma	40T Device
D-EBVD10	NEW: Epstein-Barr Virus VCA IgG – whole blood/serum/plasma	10T Device
D-HAVMWBD20	HAV IgM – whole blood/serum/plasma	20T Device
D-HBSGD20	HBsAg Test - whole blood/serum/plasma	20T Device
D-HBSGD40	HBsAg Test - whole blood/serum/plasma	40T Device
D-HBSGSPD40	HBsAg Test - serum/plasma	40T Device
D-HBSGS50	HBsAg Test – whole blood/serum/plasma	50T Strips
D-HBSGS100	HBsAg Test – whole blood/serum/plasma	100T Strips
D-HBSGSPS50	HBsAg Test – serum/plasma	50T Strips
D-HBSGSPS100	HBsAg Test – serum/plasma	100T Strips
D-HBSBD20	HBsAb Test- whole blood/serum/plasma	20T Device
D-HBEGD20	HBeAg Test - serum/plasma	20T Device
D-HBEBD20	HBeAb Test - serum/plasma	20T Device
D-HBCBS50	HBcAb Test – serum/plasma	50T Strips
D-HBVM5D10	Multi HBV-5 Test - serum/plasma	Multi – 10T Device
D-HCVD20	HCV Test - whole blood/serum/plasma	20T Device
D-HCVD40	HCV Test - whole blood/serum/plasma	40T Device
D-HCVSPD40	HCV Test – serum/plasma	40T Device
D-HCVS50	HCV Test – whole blood/serum/plasma	50T Strips
D-HCVSPS50	HCV Test – serum/plasma	50T Strips
D-HEVD20	HEV IgG/IgM- serum/plasma	20T Device
D-HIV0WBD20	HIV 1,2,O tri-line Test - whole blood/serum/plasma	20T Device
D-HIV0WBD40	HIV 1,2,O tri-line Test - whole blood/serum/plasma	40T Device
D-HIVAGABD20	HIV Ag/Ab 4th Gen. - whole blood/serum/plasma	20T Device
D-HIV0WBS50	HIV 1,2,O tri-line Test - whole blood/serum/plasma	50T Strips
D-TPD20	TP (syphilis) Test - whole blood/serum/plasma	20T Device
D-TPD40	TP (syphilis) Test - whole blood/serum/plasma	40T Device
D-TPS50	TP (syphilis) Test - whole blood/serum/plasma	50T Strips
D-SCREENMD10	Multi Infectious (HBsAg / HCV / HIV / TP) Test – whole blood/serum/plasma	Multi – 10T Device
Fertility		
D-FSHD20	FSH - Urine	20T Device
D-HCGD20	HCG Test - Urine/serum/plasma	20T Device
D-HCGD40	HCG Test - Urine/serum/plasma	40T Device
D-HCGS50	HCG Test - Urine/serum/plasma	50T Strips
D-HCGS100	HCG Test - Urine/serum/plasma	100T Strips
D-HCGUD40	HCG Test – Urine only	40T Device

Rapid Test Strips & Devices

Individually pouched 10-100 test strips

Individually pouched 10-40 test devices



Cat. No.	Product Description	Pack Size
D-HCGUS50	HCG Test – Urine only	50T Strips
D-HCGUS100	HCG Test – Urine only	100T Strips
D-LHD20	Ovulation (LH) Test – Urine only	20T Device
D-LHS50	Ovulation (LH) Test – Urine only	40T Device
Sexually Transmitted Diseases		
D-CHLAGD20	Chlamydia Ag Sample SWAB	20T Device
D-GOND20	Gonorrhoea Sample SWAB	20T Device
Autoimmune Disease		
D-RFD20	RF Test – whole blood/serum/plasma	20T Device
D-TSHD20	TSH – whole blood/serum/plasma	20T Device
Parasitic & Fevers		
D-ZIKNS1D20	NEW: Zika NS1 – whole blood/serum/plasma	20T Device
D-ZIKD20	NEW: Zika IgG/IgM – whole blood/serum/plasma	20T Device
D-ZIKMD20	NEW: Zika IgG/IgM & NS1 Combo – whole blood/serum/plasma	10T Device
D-SCTD10	Scrub Typhus IgG/IgM – whole blood/serum/plasma	10T Device
D-DGMD20	Dengue IgG/IgM Test – whole blood/serum/plasma	20T Device
D-DAGMD20	Duo Dengue Ag-IgG/IgM – whole blood/serum/plasma	20T Device
D-DAGD20	Dengue Ag- whole blood/serum/plasma	20T Device
D-DGMCMD20	Dengue + CHIK (IgG/IgM-CHIK IgM) – whole blood/serum/plasma	20T Device
D-ENTD10	Entamoeba histolytica – faeces	10T Device
D-FILGMD20	Filariasis IgG/IgM – whole blood/serum/plasma	20T Device
D-CHIKMD20	Chikungunya IgM – whole blood/serum/plasma	20T Device
D-CHIKWBD40	Chikungunya IgG/IgM- whole blood/serum/plasma	40T Device
D-CRYD10	Cryptosporidium	10T Device
D-CRYGLD10	Cryptosporidium and Giardia Lamblia Combo	10t Device
D-GL10D	Giardia Lamblia	10T Device
D-LEPGMD20	Leptospira IgG/IgM – whole blood/serum/plasma	20T Device
D-LYMD10	Lyme IgG/IgM – whole blood/serum/plasma	10T Device
D-TBD20	TB Test – whole blood/serum/plasma	20T Device
D-MONOD25	Mononucleosis Test – whole blood/serum/plasma	25T Device
D-CHABD20	Chagas Ab Rapid Test – whole blood/serum/plasma	20T Device
D-CAND10	Candida albicans - swab	10T Device
D-MPFD20	Malaria Pf Ag – whole blood	20T Device
D-MPFPVBD20	Malaria Pf/Pv Ab – whole blood	20T Device
D-MPFPVPAND20	Malaria P.f./P.v./Pan Rapid Test	20T Device
D-LEIGMD20	Leishmania IgG/IgM – whole blood/serum/plasma	20T Device
D-STRAS20	Strep A – Swab	20T Strips
D-STRBS20	Strep B – Swab	20T Strips
D-INFAS20	Influenza A/B – Swab	20T Strips
D-PNEUD20	Mycoplasma Pneumoniae Ag – swab	20T Device
D-LEIGID20	Legionella Ag – Throat swab	20T Device
D-RSVD20	Respiratory Syncytial Virus (RSV) – swab	20T Device
D-TETD40	Tetanus -whole blood/serum/plasma	40T Device
D-MPFPVBD20	Malaria Pf/Pv Ab – whole blood	20T Device
TORCH		
D-RUBGSPD20	NEW: Rubella IgG Test – serum/plasma	20T Device
D-RUBGD20	NEW: Rubella IgG Test – whole blood/serum/plasma	20T Device
D-CMVGSPD20	NEW: CMV IgG Test – serum/plasma	20T Device

Rapid Test Strips & Devices

Individually pouched 10-100 test strips

Individually pouched 10-40 test devices



Cat. No.	Product Description	Pack Size
D-CMVGD20	NEW: CMV IgG Test – whole blood/serum/plasma	20T Device
D-TORCHGSPD20	NEW: TORCH IgG Test – serum/plasma	20T Device
D-TORCHGD20	NEW: TORCH IgG Test – whole blood/serum/plasma	20T Device
D-CMVD10	CMV IgG/IgM Test – serum/plasma	10T Device
D-CMVMD10	CMV IgM Test- serum/plasma	10T Device
D-RUBMD10	Rubella IgM Test- serum/plasma	10T Device
D-RUBD20	Rubella IgG/IgM Test – whole blood/serum/plasma	20T Device
D-HSV1D20	HSV ½ IgM Test- serum/plasma	10T Device
D-TORCHD25	TORCH IgM Test- serum/plasma	25T Device
D-TORCHGMD25	TORCH IgG/IgM Test- serum/plasma	25T Device
D-HSV1D20	HSV-1 IgG/IgM Test – whole blood/serum/plasma	20T Device
D-HSV2D20	HSV-2 IgG/IgM Test – whole blood/serum/plasma	20T Device
D-TOXOWBD20	Toxo IgG/IgM Test – whole blood/serum/plasma	20T Device
Gastrointestinal		
D-NRAD20	NEW: Noro/Rota/Adeno virus Combo – Faeces	10T Device
D-NRAAD10	NEW: Noro/Rota/Adeno/Astrovirus Combo – Faeces	10T Device
C-CLOSTD10	NEW: <i>C. difficile</i> Toxin A&B Combo – Faeces	10T Device
D-CLOSGTD10	NEW: <i>C. difficile</i> GDH/Toxin A&B Combo- Faeces	10T Device
D-SHID20	NEW: Shigella – Faeces	20T Device
D-TPAGD20	NEW: Salmonella paratyphi – Faeces	20T Device
D-TYPAGD10	NEW: Salmonella typhi & paratyphi Combo – Faeces	10T Device
D-EGCD10	Entamoeba/Giardia/Crypto Combo – Faeces	10T Device
D-CALAD10	Calprotectin & Lactoferrin Combo - Faeces	10T Device
D-ASTD10	Astrovirus – faeces	10T Device
D-CLOSD20	Clostridium difficile GDH	20T Device
D-HPD20	H. pylori Ab – whole blood/serum/plasma	20T Device
D-CHAGD20	Cholera Ag – faeces	20T Device
D-TYGMCD20	Typhoid IgG/IgM - serum/plasma	20T Device
D-TYGMCD20	Typhoid IgG/IgM - whole blood/serum/plasma	20T Device
D-TYAGD20	Salmonella Typhi Antigen – faeces	20T Device
D-ADOD25	Adenovirus -faeces	20T Device
D-ROTAGD20	Rotavirus Ag - faeces	20T Device
D-ROAAGD20	Rota/Adeno Ag - faeces	20T Device
D-NOROD25	Norovirus Ag – Faeces	25T Device
D-VC01D10	Vibrio Cholera 01 (VC01) - faeces	10T Device
D-VC0139D10	Vibrio Cholera 0139 (VC0139) - faeces	10T Device
D-VCPD10	Vibrio Cholera 01/0139 - faeces	10T Device
Cancer Markers		
D-CEAD20	NEW: Carcinoembryonic Antigen (CEA) – whole blood/serum/plasma	20T Device
D-AFPD20	AFP Test - whole blood/serum/plasma	20T Device
D-CA125D10	CA125	10T Device
D-CA153D10	CA15-3	10T Device

Rapid Test Strips & Devices

Individually pouched 10-100 test strips

Individually pouched 10-40 test devices



Cat. No.	Product Description	Pack Size
D-CA199D10	CA19-9	10T Device
D-FOBD10	Faecal Occult Blood (FOB) Test - faeces	10T Device
D-FOBD20	Faecal Occult Blood (FOB) Test - faeces	20T Device
D-FOBS10	Faecal Occult Blood (FOB) Test - faeces	10T Strips
D-FOBS10	Faecal Occult Blood (FOB) Test - faeces	10T Strips
D-PSAWBD20	PSA Test – whole blood/serum/plasma	20T Device
D-PSAWBS50	PSA Test – whole blood/serum/plasma	50T Strips
Cardiac Markers		
D-FABH2D10	NEW: H-FABP & cTnI Combo – whole blood/serum/plasma	10T Device
D-FABH4D10	NEW: H-FABP/Myoglobin/CK-MB/cTnI Combo – whole blood/serum/plasma	10T Device
D-DIMERD10	NEW: D-Dimer – whole blood/plasma	10T Device
D-CTTD10	Cardiac Troponin T – whole blood/serum/plasma	10T Device
D-TROPD20	Troponin I (cTNI) Test – whole blood/serum/plasma	20T Device
D-TROPQD20	Troponin I (cTNI) Semi-Quantitative Test – whole blood/serum/plasma	20T Device
D-CKMBD10	CK-MB – whole blood/serum/plasma	10T Device
D-MCKTMD20	Multi-3(Myoglobin/CK-MB/Troponin I) panel – whole blood/serum/plasma	20T Device
D-FABD10	H-FABP -whole blood/serum/plasma	10T Device
D-CRPD10	C-reactive Protein (CRP) Test – whole blood/serum/plasma	10T Device
D-PCTD40	Procalcitonin (PCT) Test – serum/plasma	40T Device
D-MYOD10	Myoglobin Test – whole blood/serum/plasma	10T Device
D-NPTD10	NT-proBNP Rapid Test whole blood/serum/plasma	10T Device
Bacterial Infections		
D-GOND20	NEW: Gonorrhoea – Swab	20T Device
D-LPSPD10	Legionella pneumophila & Streptococcus pneumoniae - Urine	10T Device
D-TRVAD10	Trichomonas Vaginalis – Swab	10T Device
D-BRUD20	Brucella Abortus – whole blood	20T Device
D-MYPMD20	Mycoplasma Pneumoniae IgM	20T Device
D-MYPGMD20	Mycoplasma Pneumoniae IgG/IgM whole blood/serum/plasma	20T Device
D-TETD20	Tetanus whole blood/serum/plasma	20T Device

Rapid Test Strips & Devices

Individually pouched 10-100 test strips

Individually pouched 10-40 test devices



Cat. No.	Product Description	Pack Size
	Proteins	
D-NGALD10	NGAL – serum/plasma	10T Device
D-LACFD10	Lactoferrin	10T Device
D-IGED10	IgE	10T Device
D-SAAD10	SAA	10T Device
D-SAACRPD10	SAA and CRP Combo	10T Device
D-HBA1CD10	HbA1c	10T Device
D-TRFOBD20	Transferrin & FOB – faeces	20T Device
D-HBHBD20	Hb + Hb-Hp – faeces	20T Device
D-TRFOHB	Transferrin, FOB & Hb + Hb-Hp	20T Device



Urinalysis Strips

Available analytes: Ascorbic acid, glucose, bilirubin, ketone (acetoacetic acid), specific gravity, blood, pH, protein, urobilinogen, nitrite and leukocytes.

Other combinations and compatible auto-analysers available

Cat. No.	Product Description	Pack Size
D-U2100	Urinalysis Strips 2 Parameter (Glucose, Protein)*	100T
D-U3100	Urinalysis Strips 3 Parameter	100T
D-U4100	Urinalysis Strips 4 Parameter	100T
D-U5100	Urinalysis Strips 5 Parameter	100T
D-U6100	Urinalysis Strips 6 Parameter	100T
D-U7100	Urinalysis Strips 7 Parameter	100T
D-U8100	Urinalysis Strips 8 Parameter	100T
D-U9100	Urinalysis Strips 9 Parameter	100T
D-U10100	Urinalysis Strips 10 Parameter	100T
D-U11100	Urinalysis Strips 11 Parameter	100T
D-U2MC100	Urinalysis Strips (Micro Albumin and Creatinine)	100T
D-U2MC50	Urinalysis Strips (Micro Albumin and Creatinine)	50T
D-ULC1&2	Urinalysis Controls	6 x 10ml



Antibiotic Discs & Bacterial Typing Anti-Sera

Microbiology Susceptibility and Identification Reagents



Cat. No.	Product Description	Pack Size
Microbial Sensitivity Disc Cartridges – Popular Products*		
DD-AMP10-C	Ampicillin 10mcg	5 x 50
DD-AUG30-C	Augmentin 30mcg	5 x 50
DD-CAZ30-C	Ceftazidime 30mcg	5 x 50
DD-CPR5-C	Ciprofloxacin 5mcg	5 x 50
DD-CTX30-C	Cefotaxime 30mcg	5 x 50
DD-IMP10-C	Imipenem 10mcg	5 x 50
DD-LEV5-C	Levofloxacin 5mcg	5 x 50
DD-MER10-C	Meropenem 10mcg	5 x 50
DD-NIT300-C	Nitrofurantoin 300mcg	5 x 50
DD-OPT5-C	Optochin 5mcg	5 x 50
DD-OXSTRIP	Oxidase Strips	5 x 50
DD-PEN10-C	Penicillin 10mcg	5 x 50
DD-VAN30-C	Vancomycin 30mcg	5 x 50

*Please get in touch for our full list of antibiotic discs available.

All sensitivity discs are also available in cartridges of 100.

Accessory Products

Cat. No.	Product Description	Pack Size
DD-DD6	Microbial Disc Dispenser	For use with 50 cartridges (6 discs)
CM-21-BLANK	Blank monodiscs	Vial of 100
CM-21-NCF	Nitrocefin discs	Vial of 100
DD-ONPG	Onpg identidisc	Vial of 100
DD-OXSTRIP	Oxidase strip	25 Strips
CM-TSB45A	TSB Adult	5 x 45mL
CM-12-TSB9P	Paediatric blood culture with TSB	5 x 9mL
CM-THG45A	Anaerobic blood culture THG	5 x 45mL
CM-BHI45A	Adult BHI Blood Culture	5 x 45mL

Other sizes and products are available, please enquire for details.

New: Bacterial Typing Antisera

Cat. No.	Product Description	Pack Size
BT-VCO2	Vibrio Cholera Ogawa	2mL
BT-VCP2	Vibrio Cholera Poly (Inaba/Ogawa)	2mL
BT-VCI2	Vibrio Cholera Inaba	2mL
BT-SOPAS	Salmonella O Poly (A-S)	2mL
BT-VC1392	Vibrio Cholerae O139/Bengal	2mL
BT-EC0157	E.Coli Polyvalent O157	2mL

Other bacterial typing anti-sera available, please contact us for the full list.



Dehydrated Culture Media

500gm Wrapped Pots

Cat. No.	Product Description	Pack Size
Chromogenic Dehydrated Culture Media		
CM-CM01	Chr. Candida	500gm
CM-CM02	Sakazaki GBP	500gm
CM-CM03	E. coli	500gm
CM-CM04	Listeria Aloa	500gm
CM-CM05	Salmonella	500gm
CM-CM06	Uricolour	500gm
CM-CM07	Staphilocolor	500gm
Dehydrated Culture Media		
CM-AA317	Agar Agar	500gm
CM-AAB190	Aeromonas Agar Base	500gm
CM-AB318	Agar Base	500gm
CM-ATMC048	Amies Transport Medium (modified) charcoal (1%)	500gm
CM-AIA151	Anaerobic Isolation Agar	500gm
CM-ADB299	Azide dextrose broth	500gm
CM-BCM289	Bacillus Cereus Medium	500gm
CM-BPA203	Baird Parker Agar	500gm
CM-BHIA175	BHI Agar	500gm
CM-BHIB106	BHI Broth	500gm
CM-BEAA259	Bile Esculin azide agar	500gm
CM-BSA283	Bismuth Sulphite Agar	500gm
CM-BAB109	Blood Agar Base	500gm
CM-BAB120	Blood Agar Base No.2.	500gm
CM-BGA182	Brilliant Green Agar	500gm
CM-BGA167	Brilliant Green Agar Modified	500gm
CM-BGBB127	Brilliant Green Bile Broth 2%	500gm
CM-BAB131	Brucella Agar Base	500gm
CM-BPW049	Buffered Peptone Water	500gm
CM-CAB254	Campylobacter agar base	500gm
CM-CBM130	Campylobacter Blood free Medium	500gm
CM-CEB072	Campylobacter Enrichment Broth	500gm
CM-CBTM054	Cary Blair transport Medium	500gm
CM-CA148	Cetrimide Agar	500gm
CM-CBLA261	China blue lactose agar	500gm
CM-CLED096	CLED DI Medium	500gm
CM-CLED097	CLED SI Medium	500gm
CM-CAB137	Columbia Agar Base	500gm
CM-CMM214	Cooked Meat medium	500gm
CM-CMA159	Corn meal agar	500gm
CM-DCAH173	DCA Agar Hynes	500gm
CM-DCAL162	DCA Agar Leifsons	500gm
CM-DTM198	Dermatophyte Test Medium	500gm
CM-DTA077	Dextrose Tryptone agar	500gm
CM-DIA142	Dissalm Agar	500gm
CM-DNAA134	Dnase Agar	500gm
CM-DST123	DSTA Agar	500gm
CM-EA356	Enterococcus Agar	500gm

Dehydrated Culture Media

500gm Wrapped Pots



Cat. No.	Product Description	Pack Size
CM-ECB263	EC broth	500gm
CM-ECB250	EC broth modified	500gm
CM-EYA376	Egg Yolk Agar	500gm
CM-EMB110	EMB agar	500gm
CM-EA132	Endo Agar	500gm
CM-FBB189	Fraser Broth Base	500gm
CM-GCAB116	GC Agar Base	500gm
CM-GCB401	Giolitti Cantoni broth	500gm
CM-HEA207	Hektoen Enteric Agar	500gm
CM-HMB210	Hoyles Medium Base	500gm
CM-ISA031	Iron Sulphite Agar	500gm
CM-ISA085	Iso-Sensitest agar	500gm
CM-KEA154	Kanamycin-Esculin Agar	500gm
CM-KEB089	Kanamycin-Esculin Broth	500gm
CM-KIA194	Kligler Iron Agar	500gm
CM-LB035	Lactose Broth	500gm
CM-LBA265	LB Agar	500gm
CM-LBB266	LB Broth	500gm
CM-LTSB297	Lauryl Tryptose (Sulphate) Broth APHA	500gm
CM-LB139	Lethen Broth	500gm
CM-LEB098	Listeria Enrichment Broth FDA	500gm
CM-LIMB188	Listeria Isolation Med. Base	500gm
CM-LJM351	Löwenstein-Jensen Medium	500gm
CM-LDB267	Lysine decarboxylase broth	500gm
CM-LIA090	Lysine Iron Agar	500gm
CM-MAWS185	MacConkey Agar (base)	500gm
CM-MA2174	MacConkey agar No.2	500gm
CM-MA3172	MacConkey Agar No.3	500gm
CM-MAS170	MacConkey Agar Sorbitol	500gm
CM-MAN257	MacConkey Agar w/o Crystal Violet	500gm
CM-MANS158	MacConkey Agar w/o Salt	500gm
CM-MBP094	MacConkey Broth Purple	500gm
CM-MEA164	Malt Extract Agar	500gm
CM-MEB050	Malt Extract Broth	500gm
CM-MSA213	Mannitol Salt Agar	500gm
CM-MSB244	Mannitol Salt Broth	500gm
CM-MRD029	Maximal recovery diluent	500gm
CM-MLS095	Membrane lauryl sulphate broth	500gm
CM-MPCA061	Milk Plate Count Agar	500gm
CM-MiM111	Motility-Indol-Urea Base (MIU)	500gm
CM-MB380	Motility Broth	500gm
CM-MRSA205	MRS Agar	500gm
CM-MRSB177	MRS Broth	500gm
CM-MRVP272	MRVP medium	500gm
CM-MSRV086	MSRV AGAR (ISO 6579)	500gm
CM-MHA135	Mueller Hinton Agar NCCLS	500gm
CM-MKB211	Mueller Kaufmann Broth	500gm
CM-NA073	Nutrient Agar	500gm

Dehydrated Culture Media

500gm Wrapped Pots



Cat. No.	Product Description	Pack Size
CM-NB402	Nitrate Broth	500gm
CM-NBE036	Nutrient Broth Economy	500gm
CM-NB2037	Nutrient Broth No.2 APHA	500gm
CM-OGYE093	O.G.Y.E. Agar Base	500gm
CM-OFM228	OF medium	500gm
CM-OSA122	Orange Serum Agar	500gm
CM-PW038	Peptone Water	500gm
CM-PAB150	Perfringens Agar Base	500gm
CM-PAA032	Phenylalanine Agar	500gm
CM-PRA108	Phenol Red Agar	500gm
CM-PRB058	Phenol Red Broth	500gm
CM-PCAAP064	Plate Count Agar APHA	500gm
CM-PCASP051	Plate Count Agar SP	500gm
CM-PDA117	Potato Dextrose Agar	500gm
CM-PDB117	Potato Dextrose Broth	500gm
CM-PAB160	Pseudomonas Agar Base	500gm
CM-R2AM043	R 2 A Medium	500gm
CM-RVB070	Rapport Vassiliadis Broth	500gm
CM-RCA168	Reinforced Clostridal Medium (agar)	500gm
CM-RBAB083	Rose Bengal Agar Base	500gm
CM-SDAC393	Sab Dex agar Chloramp 0,05 g/l	500gm
CM-SDA197	Sab Dex Agar	500gm
CM-SDAC200	Sab Dex agar Chloramphenicol 0,5 g/l	500gm
CM-SDMA275	Sab dextrose-maltose agar	500gm
CM-SLM157	Sabouraud Liquid Medium USP	500gm
CM-SMA201	Sabouraud Maltose Agar	500gm
CM-SSB244	Salmonella Shigella Broth	500gm
CM-MM140	Schaedler Agar	500gm
CM-SBB046	Selenite Broth Base	500gm
CM-SCB047	Selenite-Cystine Broth	500gm
CM-STA121	Sensitivity Test Agar	500gm
CM-SIM081	SIM Medium	500gm
CM-SCA063	Simmons Citrate Agar	500gm
CM-SBA143	Slanetz Bartley Agar	500gm
CM-SSA202	SS Agar	500gm
CM-SSB249	SS Broth	500gm
CM-STM042	Stuart Transport Medium	500gm
CM-TCBS183	TCBS	500gm
CM-T7A181	Tergitol 7 Agar	500gm
CM-TBB153	Tetrathionate Broth Base	500gm
CM-TUFM069	Thioglycolate USP Fluid medium	500gm
CM-THB104	Todd Hewitt Broth	500gm
CM-TW039	Tryptone Water	500gm
CM-TPB078	Tryptose Phosphate Broth	500gm
CM-TSA107	TSA	500gm
CM-TSB080	TSB	500gm
CM-TSCA369	TSC Agar	500gm
CM-TSI204	TSI	500gm

Dehydrated Culture Media

500gm Wrapped Pots



Cat. No.	Product Description	Pack Size
CM-T338	Tryptone	500gm
CM-UAB066	Urea Agar Base	500gm
CM-UBB028	Urea Broth Base	500gm
CM-VRBA114	Violet Red Bile Agar (lactose)	500gm
CM-VRBG115	Violet Red Bile Glucose	500gm
CM-VJA196	Vogel & Johnson Agar	500gm
CM-WCA274	Wilkins-Chalgren agar	500gm
CM-WLNA209	WL Nutrient Agar	500gm
CM-WA178	Wort Agar	500gm
CM-XLD179	XLD Agar	500gm
CM-YSA192	Yersinia Selective Agar (CIN)	500gm
CM-YA060	Yeast Agar	500gm
CM-YEA059	Yeast Extract Agar	500gm
CM-YEXPOWD	Yeast Powder	500gm

CentriVet™ Glucose & Ketone Monitoring System for Cats, Dogs and Cows

Rapid Labs are proud to distribute the CentriVet™ range of veterinary products. The CentriVet monitoring system enables the monitoring of ketones and glucose in cats, dogs and cows. Ketone monitoring enables the identification of sub-clinical ketosis in dairy cows, to protect against economic losses caused by decreased milk production and further health complications. Glucose monitoring in cats and dogs is important for the management of pet diabetes. The CentriVet range includes glucose and ketone test strips with species-specific calibration chips for monitoring canine, feline and bovine blood to ensure accurate results. The test is rapid and easy-to-use, with results in seconds. Simply insert a test strip into the meter and add a spot of blood onto the strip to generate a reading.



Cat. No.	Product Description	Pack Size
GK114-13C	CentriVet Meter	n/a
GK134-12CB	Cat/Dog Glucose Test Strips	50T
GK134-10CB	Cat/Dog Ketone Test Strips	25T
GK134-10C	Bovine Ketone Test Strips	25T
GK134-12C	Bovine Glucose Test Strips	50T
GK124-13C	Glucose Control Solution	2 x 2ml
GK124-12C	Ketone Control Solution	2 x 2ml
GK-LSO-01	28G Safety Lancets for Cats/Dogs	50
GK-LSG-01	21G Safety Lancets for Cows	50

View our demonstration video with the University of Cambridge Veterinary School to find out more – visit www.rapidlabs.co.uk/centrivet.

Veterinary Rapid Tests



Our veterinary rapid tests are a new addition to our portfolio and use the same lateral flow technology as our human diagnostic rapid tests. These offer affordable and easy-to-use testing in 5-15 minutes (depending on the test) - without the need for expensive equipment.

Cat. No.	Product Description	Pack Size
Farm Animal Rapid Tests		
VR-BB-AG-10	Bovine Brucella Antigen Test – whole blood/serum/plasma	10T
VR-BFMA-AB-10	Bovine Foot and Mouth Disease Virus A Antibody Test – serum/plasma	10T
VR-BTB-AB-10	Bovine Tuberculosis Antibody Test – Serum/plasma	10T
VR-BVD-10	Bovine Viral Diarrhoea Test – Serum/plasma	10T
VR-FMDVO-AB-10	Foot & Mouth Disease Virus O Antibody Test – serum/plasma	10T
VR-PCV2-AB-10	Porcine Circovirus 2 Antibody Test – serum/plasma	10T
VR-PFMVA-AB-10	Porcine Foot & Mouth Disease Virus A Antibody Test – serum/plasma	10T
VR-PPGB-AB-10	Porcine Pseudorabies gB Antibody Test – serum/plasma	10T
VR-PPGE-AB-10	Porcine Pseudorabies gE Antibody Test – serum/plasma	10T
VR-PRRSV-AB-10	Porcine Reproductive and Respiratory Syndrome Antibody Test – Serum/plasma	10T
VR-SFT-10	Swine Fever Test – Serum/plasma	10T
VR-ST-AB-10	Swine Trichinellosis Antibody Test – Whole blood/serum/plasma	10T

Cat. No.	Product Description	Pack Size
	Canine Rapid Tests	
VR-CAV-AG-10	Canine Adenovirus Type II Antigen Test – Ocular/Nasal secretions	10T
VR-CB-LPS-10	Canine Brucella LPS Test – Whole blood/serum/plasma	10T
VR-CCRP-SP-10	Canine CCRP Test – Serum/plasma	10T
VR-CCV-AG-10	Canine Coronavirus Antigen Test – Faeces/vomit	10T
VR-CDV-AB-10	Canine Distemper Virus Antibody Test – Serum/plasma	10T
VR-CDV-AG-10	Canine Distemper Virus Antigen Test – Ocular/nasal secretions	10T
VR-CE-AB-10	Canine Ehrlichia Antibody Test – Whole blood/serum/plasma	10T
VR-CH-AG-10	Canine Heartworm Antigen Test – Whole blood/serum/plasma	10T
VR-CIV-AG-10	Canine Influenza Virus Antigen Test – Ocular/nasal secretions	10T
VR-CL-AB-10	Canine Leishmania Antibody Test – whole blood/serum/plasma	10T
VR-CPCV-AG-10	Canine Parvo + Coronavirus Antigen Test – Faeces/vomit	10T
VR-CPV-AB-10	Canine Parvovirus Antibody Test – Serum/plasma	10T
VR-CPV-AG-10	Canine Parvovirus Antigen Test	10T
	Feline Rapid Tests	
VR-FCOV-AG-10	Feline Coronavirus Antigen Test – Pleural fluid/Ascites	10T
VR-FCV-AG-10	Feline Calicivirus Antigen Test – Ocular/nasal secretions	10T
VR-FELV-AG-10	Feline Leukaemia Virus Antigen Test – Whole blood/serum/plasma	10T
VR-FILV-AG-10	FIV Ab + FeLV Ag Combined Test - Whole blood/serum/plasma	10T
VR-FIP-AG-10	Feline Infectious Peritonitis Antigen Test – Faeces/ascites	10T
VR-FIV-AG-10	Feline Immunodeficiency Virus Antibody Test – Whole blood/serum/plasma	10T
VR-FPV-AG-10	Feline Panleucopenia Virus Antigen Test – Faeces/serum	10T
	Rapid Tests for Multiple Species	
VRG-AG-10	Giardia Antigen Test - Faeces	10T
VR-H-AB-10	Hydatid Antibody (CE Ab) Test – Serum/plasma	10T
VR-TG-AG-10	Toxoplasma Gondii Antigen Test (Canine/Feline) – Faeces/serum	10T
VR-TIGM-10	Toxoplasma IgG IgM Test (Canine/Feline) – Whole blood/serum/plasma	10T

RNAssist specialises in next generation tissue fixation and biomolecule stabilisation. Their products are compatible with all biological sample types. Rapid Labs are proud to be the global supplier for RNAssist.

Biomolecule Stabilisation

Long term stabilisation of RNA, DNA, proteins and phosphoproteins

Cell & Tissue Fixation

Conserves cellular morphology of fresh & frozen tissue, compatible with GFP, IF, IHC, ISH and RNAscope imaging

Inactivates viruses, bacteria and yeast*

Allows work in lower biosecurity settings to enable safe, easy transportation of sensitive samples

Tissue Dissociation with *vivoPHIX*TM

Suitable for single-cell multi-omic analysis

Economical Advantages

Store and ship at room temperature, eliminating the need for expensive cold-chain transport

The RNAssist range consists of two products depending on your application:

*genoPHIX*TM

For projects involving large tissue samples

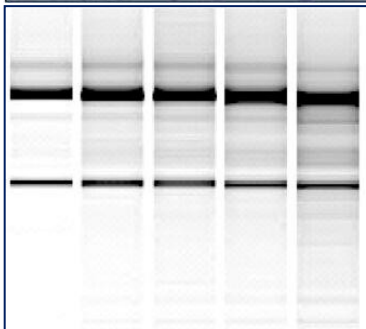
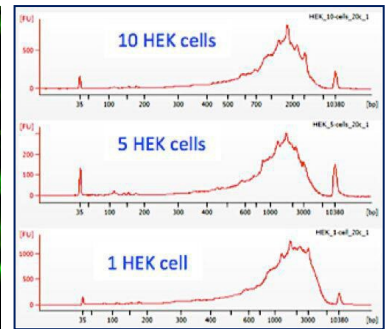
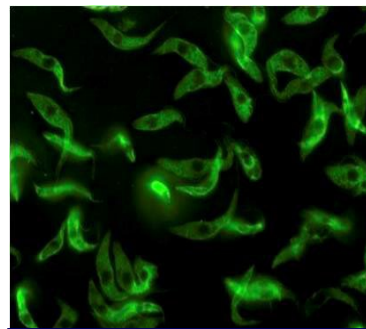
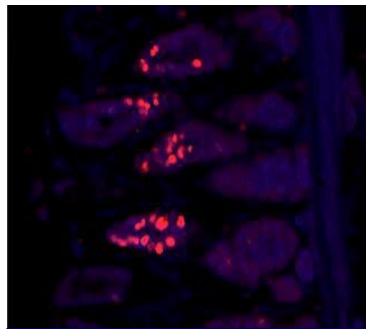
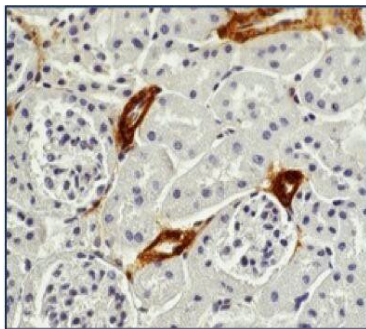
*genoPHIX*TM has been developed for work with large paraffin-embedded tissue samples. Its unique properties allow *genoPHIX*TM to extract nucleic acids from paraffin embedded tissue and is ideal for IHC, IF, FISH and fluorescent protein work.



*vivoPHIX*TM

For single cell analysis projects

*vivoPHIX*TM offers the same benefits as *genoPHIX*TM with the extra advantage of enabling dissociation of biomolecules from tissue for single cell analysis. *vivoPHIX*TM can therefore be used for downstream single-cell genomic analysis including scRNA-seq and scDNA-seq.

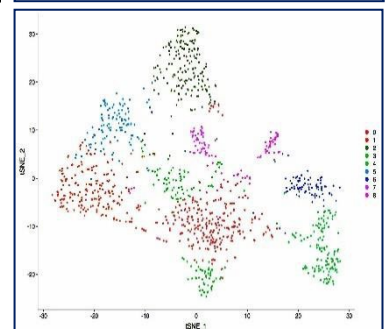


Clockwise from top left:

- 1) IHC of *genoPHIX*TM treated kidney section using anti-SMA antibody.
- 2) IF of *genoPHIX*TM treated stomach section using anti-ki67 antibody.
- 3) Gel image showing RNA stability over 25 days at 37°C with *genoPHIX*TM.

Clockwise from top left:

- 1) IF of *vivoPHIX*TM treated trypanosomes using anti-tubulin antibody.
- 2) SMART-seq2 analysis of 1,5 or 10 *vivoPHIX*TM HEK cells after 5 days storage at 4C.
- 3) scRNA-seq analysis of *vivoPHIX*TM dissociated mouse pancreas.



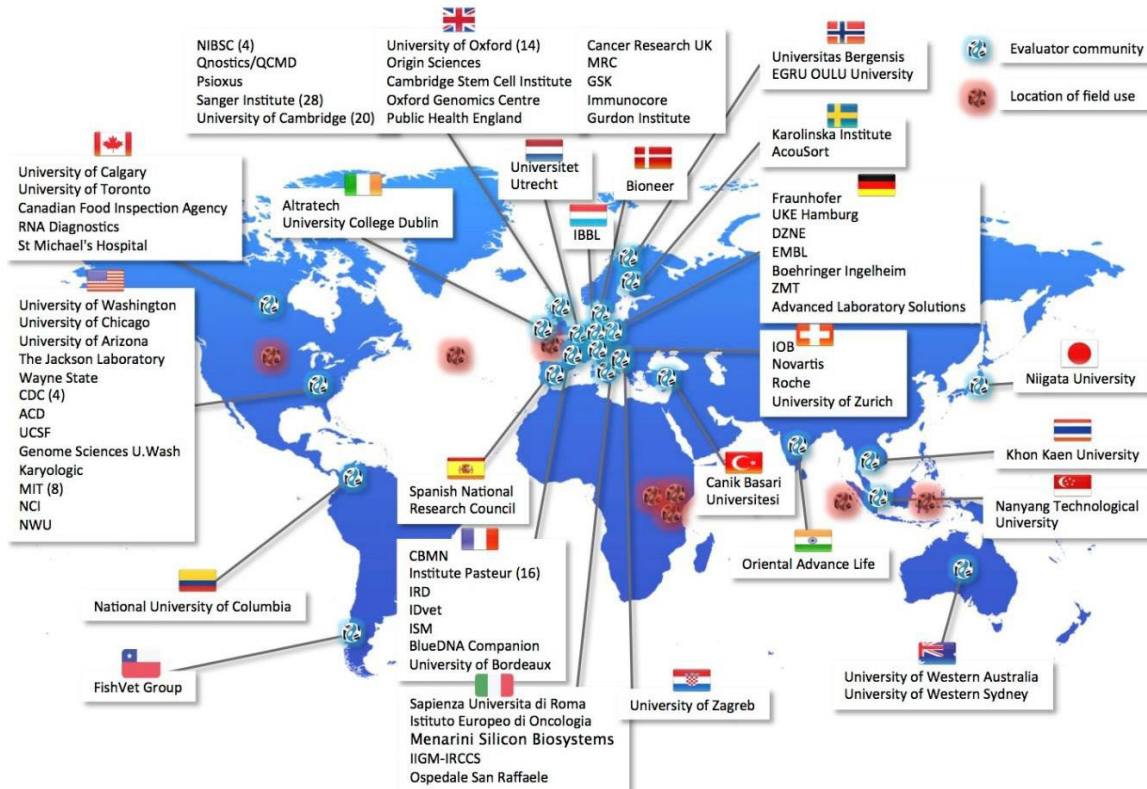
*Every virus tested so far with RNAssist have been inactivated. Inactivation must be tested internally by the end user. Please contact us to review the full list of viruses and bacteria that have been effectively inactivated with RNAssist.

RNAssist Product Range

Cat. No.	Product Description	Volume
RD-GENO-1	<i>genoPHIX</i> [™]	1ml
RD-GENO-5	<i>genoPHIX</i> [™]	5ml
RD-GENO20	<i>genoPHIX</i> [™]	20ml
RD-GENO-50	<i>genoPHIX</i> [™]	50ml
RD-VIVO-5	<i>vivoPHIX</i> [™]	5ml
RD-VIVO-20	<i>vivoPHIX</i> [™]	20ml
RD-VIVO-50	<i>vivoPHIX</i> [™]	50ml

With over 240 users and counting, get in touch now to join the RNAssist community!

Email us at rnassist@rapidlabs.co.uk



See what our customers are saying about *vivoPHIX*[™]:

‘RNAssist is an amazing technology with important applications for us. I haven’t been so excited about something in quite some time.’

– **Canadian Food Inspection Agency**

‘I am convinced that we have very good inactivation of the virus’ – **Pasteur Institute**

‘The FISH signals were better in RNAssist for the three probes I have tested. The big advantage is that we can avoid using the chemical fume hood with RNAssist.’

– **University of Cambridge**

‘The RNA quality is very high. The quality was higher than the corresponding methanol fixed tumour’

– **University of Oxford**

‘RNAssist is a valid alternative fixative to both preserve tissue morphology and RNA integrity and it is recommended when alcohol-based methods cannot be used to post-fix the tissue’

– **European Institute of Oncology**

‘Single cell libraries are better with RNAssist. The RNAssist sample is much purer and have more reads per cell. It’s working amazingly for my project’ – **Sanger Institute**

‘This has made clear (as expected) that we need an alternative RNA stabilisation reagent to the one we were using’

– **Sanger Institute**

Introducing *virusPHIX*™

Virus Inactivation and RNA Stabilising Transport Medium



- Stabilises RNA, DNA and phosphoproteins at room temperature
- Inactivates all tested viruses, bacteria and yeast* for safer handling and transport at room temperature
- Compatible with most RNA purification kits (RNeasy™, QIAamp™, QIAasymphony™, QIAcube™, Nuclisens™, GeneXpert™ and Filmarray™) for molecular testing
- Non-toxic, non-volatile guanidine-free formulation

“ We have been able to move our dengue research from a CL3 to CL2 facility thanks to *virusPHIX*™, improving the safety of our research and saving a lot of time and resources in the process.
- Dr SM, Pasteur Institute, Paris ”

virusPHIX™ is a novel RNA stabiliser and virus inactivation medium based on technology developed by Rapid Labs Limited & RNAssist Limited (UK). It has shown to stabilise RNA for up to 1 year at 20 C and has successfully inactivated all tested viruses and bacteria to date. Unlike other virus transport mediums, *virusPHIX*™ does not contain guanidine, a highly toxic substance than can produce hydrogen cyanide when mixed with household cleaning products such as bleach. *virusPHIX*™ is a completely non-toxic, non-volatile reagent that can be used safely in a home testing environment and shipped for PCR analysis. The *virusPHIX*™ range of products are manufactured and sold worldwide by Rapid Labs Limited (UK). With over 200 evaluators around the world, *virusPHIX*™ is a popular choice for RNA stabilisation thanks to its compatibility with most front end RNA purification kits.

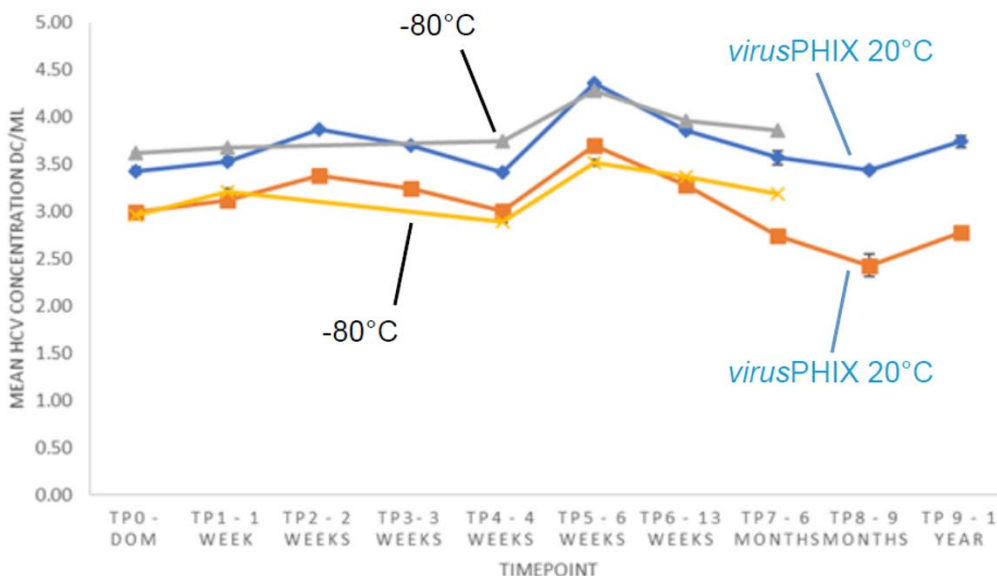
Viruses/bacteria inactivated with <i>virusPHIX</i> ™		
SARS-CoV-2	Mtb*	BVDV
Zika	Vaccinia	<i>Staph. a</i>
Dengue	FIV	<i>P. aeruginosa</i>
Influenza A	Hep B (duck)	Listeria

*Clinical *Mycobacterium tuberculosis*

Please contact us to view the full list of inactivated viruses and bacteria

“ We were able to fix our samples on collection in West Africa and safely transport them to Cambridge. Despite delays in the shipping where samples were delayed at Dubai for at least a day at 45°C, nevertheless the samples retained an excellent level of quality.
- Dr VL, Sanger Institute, Cambridge ”

1 Year stability of 2 HCV strains in *virusPHIX*™ at 20°C, compared with -80°C storage



Qnostics

QCMD
Quality Control For Molecular Diagnostics

Thanks to Shubana Kazi and Alastair Ricketts

virusPHIX+™

The original formulation, recommended for Swab and saliva testing

The Roslin Institute in Edinburgh, UK demonstrated that *virusPHIX+*™ inactivates SARS-CoV-2 in as little as 10 minutes when treated at a 1:1 sample to reagent ratio at room temperature. Under these conditions, a 10log₆ reduction in SARS-CoV-2 virus titre was recorded. An additional independent study by Qnostics UK demonstrated that stabilises SARS-CoV-2 virus RNA for at least 33 days at 20°C. Sputum samples spiked with SARS-CoV-2 RNA were analysed over 33 days, and the Ct value was compared with *virusPHIX+*™ treated samples and control (no stabiliser added).

An independent UK organisation evaluated the reduction in virus titre SARS-CoV-2 spiked samples (tissue culture fluid) and presence of SARS-CoV-2 over a series of cell passages. Reduction in virus titre following treatment is given as the difference between the mean log₁₀ TCID₅₀/ml for treated conditions and the PBS control (*Test 1*). In parallel, purified samples were seeded onto Vero E6 monolayers to amplify any remaining virus over the course of up to four serial passages. This test is qualitative and reports either the presence or absence of virus amplification (*Test 2*):

Treatment	Test 1: Reduction in SARS-CoV-2 virus titre	Test 2: Cell Passage
<i>virusPHIX+</i> ™, 10 minutes	≥6.4 log ₁₀	Virus not detected
<i>virusPHIX+</i> ™, 30 minutes	≥7.1 log ₁₀	Virus not detected
PBS Control, 10 minutes	-	Virus detected
PBS Control, 30 minutes	-	Virus detected

Please contact us if you wish to view the full study reports.

virusPHIX-LV™

A lower viscosity formulation, optimised for automated liquid handling platforms (Hamilton, Ortho, Tecan), suitable for testing with nasopharyngeal swab samples.

Independent UK study evaluated the same reduction in virus titre SARS-CoV-2 spiked samples treated with *virusPHIX-LV* vs PBS control at a 1:10 ratio (room temperature):

Treatment	Reduction in SARS-CoV-2 virus titre
<i>virusPHIX-LV</i> ™, 10 minutes	≥5.1 log ₁₀
<i>virusPHIX-LV</i> ™, 30 minutes	≥6.0 log ₁₀
PBS Control	-

virusPHIX-P9™

Recommended as an inactivation and RNA stabilisation media for saliva and swabs, especially when it is necessary to add sample directly into an RT-LAMP, LamPORE or RT-PCR assay without RNA purification*. Extensive testing at QCMD has shown that *virusPHIX-P9*™ is compatible with a variety of SARS-CoV-2 antigenic tests including a wide range of Lateral Flow tests.

The same independent tests were performed using *virusPHIX-P9*™ to determine SARS-CoV-2 virus titre following 10 minutes and 30 minutes treatment. Samples were diluted in *virusPHIX-P9*™ at a 1:3 ratio, all other conditions remained the same. Please contact us if you wish to view the full study reports:

Treatment	Reduction in SARS-CoV-2 virus titre
<i>virusPHIX-P9</i> , 10 minutes	≥4.4 log ₁₀
<i>virusPHIX-P9</i> , 30 minutes	≥4.8 log ₁₀
PBS Control	-

**virusPHIX-P9*™ has been demonstrated to be directly compatible with LAMP assays, please contact us for further information.



Biological Buffers & Protein Additives

Please contact us to discuss your volume requirements.



Abbreviated Name	Product Description	CAS No.
Additives for Protein Preparations		
CHAPS	3-[(3-Cholamidopropyl) dimethylammonio]-1-propanesulfonate	75621-03-3
CHAPSO	3-[3-(Cholamidopropyl)dimethylammonio]-2-hydroxy-1-propanesulfonate	82473-24-3
SB-8	N-Octyl-N,N-dimethyl-3-ammonio-1-propanesulfonate	15178-76-4
SB-10	N-Decyl-N,N-dimethyl-3-ammonio-1-propanesulfonate	15163-36-7
SB-12	N-Dodecyl-N,N-dimethyl-3-ammonio-1-propanesulfonate	14933-08-5
SB-14	N-Tetradecyl-N,N-dimethyl-3-ammonio-1-propanesulfonate	14933-09-6
SB-16	N-Hexadecyl-N,N-dimethyl-3-ammonio-1-propanesulfonate	2281-11-0
SB-18	N-Octadecyl-N,N-dimethyl-3-ammonio-1-propanesulfonate	13177-41-8
NDSB-195	Dimethylethylammonium propanesulfonate	Registered
NDSB-201	3-(1-Pyridinio)-1-propanesulfonate	15471-17-7
Biological Buffers – Ethane		
ACES	N-(2-Acetamido)-2-aminoethanesulfonic acid	7365-82-4
BES	N,N-bis(2-Hydroxyethyl)-2-aminoethanesulfonic acid	10191-18-1
CHES	2-(N-Cyclohexylamino)ethanesulfonic acid	103-47-9
HEPES	N-(2-Hydroxyethyl)piperazine-N'-ethanesulfonic acid	7365-45-9
MES	2-(N-Morpholino)ethanesulfonic acid	4432-31-9
MES-H	2-(N-Morpholino)ethanesulfonic acid monohydrate	145224-94-8
PIPES	Piperazine-N,N'-bis(2-ethanesulfonic acid)	5625-37-6
TES	2-[tris(Hydroxymethyl)methylamino]-1-ethanesulfonic acid	7365-44-8
Biological Buffers – Propane		
CAPS	3-(Cyclohexylamino)-1-propanesulfonic acid	1135-40-6
HEPPS	N-(2-Hydroxyethyl)piperazine-N'-propanesulfonic acid	16052-06-5
MOPS	3-(N-Morpholino)propanesulfonic acid	1132-61-2
PIPPS	1,4-Piperazine-N,N'-bis(propanesulfonic acid)	5625-56-9
TAPS	3-[tris(Hydroxymethyl)methylamino]-1-propanesulfonic acid	29915-38-6
Biological Buffers – Sodium Salt		
BES.Na	N,N-bis(2-Hydroxyethyl)-2-aminoethanesulfonic acid, sodium salt	66992-27-6
HEPES.Na	N-(2-Hydroxyethyl)piperazine-N'-ethanesulfonic acid, sodium salt	75277-39-3
MES.Na	2-(N-Morpholino)ethanesulfonic acid, sodium salt	71119-23-8
MOPS.Na	3-(N-Morpholino)propanesulfonic acid, sodium salt	71119-22-7
PIPES.2Na	Piperazine-N,N'-bis(2-ethanesulfonic acid), disodium salt	76836-02-7
TAPS.Na	N-[tris(Hydroxymethyl)methyl]-3-aminopropanesulfonic acid, sodium salt	91000-53-2
TES.Na	2-(tris(Hydroxymethyl)methylamino)-1-ethanesulfonic acid, sodium salt	70331-82-7
ADA	N-[2-Acetamido]-2-iminodiacetic acid	26239-55-4
TRIS-UP	tris(Hydroxymethyl)aminomethane	77-86-1
TRIC-HCl	tris(Hydroxymethyl)aminomethane hydrochloride	1185-53-1
BIS-TRIS	bis[2-Hydroxyethyl]imino tris(hydroxymethyl)methane	6976-37-0
BIS-TRIS Propane	1,3-bis[tris(hydroxymethyl)methylamino]propane	64431-96-5
BICINE	N,N-bis(2-Hydroxyethyl)glycine	150-25-4
TRICINE	N-tris(Hydroxymethyl)methylglycine	5704-04-1
G-132	Glycyl-glycine	556-50-3

Analyte	Sample Type(s)	Incubation Time	LOD/ROD
Antibiotics & Mycotoxins			
Aflatoxin B1 EIA	Cereal, nuts, animal feed	60 mins	0.3-3.9ng/g (ppb)
Chloramphenicol EIA	Meat, seafood, honey, dairy products	60 mins	0.05-10ng/g (ppb)
Ciprofloxacin EIA	Honey, milk	90 mins	4-216ng/g (ppb)
Deoxynivalenol (DON) EIA	Cereal, nuts, animal feed	90 mins	100-1350ng/g (ppb)
Fumonisin EIA	Cereal, gluten, animal feed	90 mins	3.7-28.8 ng/g (ppb)
Furaltadone (AMOZ) EIA	Meat, seafood, honey, egg	60mins	0.06-6.4ppb
Furazolidone (AOZ) EIA	Meat, seafood, honey	30 mins	0.012-2.-25ppb
Ochratoxin EIA	Cereal, fodder	30 mins	0.45-36.45 ppb
Streptomycin EIA	Honey, dairy products	60 mins	1-180ng/g (ppb)
Sulphonamides EIA	Meat, seafood, honey, dairy products	90 mins	1-270ng/g (ppb)
T-2 Toxin EIA	Cereal. Nuts, animal feed	90 mins	12-240ng/g (ppb)
Tetracycline EIA	Milk, honey, cream, ice cream	90 mins	6-360 ppb
Tylosin EIA	Meat, egg, honey, dairy products	90 mins	4-100ng/g (ppb)
Zearalenone EIA	Cereal, nuts, animal feed	90 mins	9-120ng/g (ppb)
Nut Allergens			
Almond Ag Rapid Test	Food	10 mins	5-100000ug/g
Almond Ag EIA	Food	60 mins	0.5-50000ug/g (ppm)
Brazil Nut Ag Rapid Test	Food	10 mins	5-50000ug/g (ppm)
Brazil Nut Ag EIA	Food	--	On Request
Cashew Nut Ag Rapid Test	Food	10 mins	10-100000ug/g (ppm)
Cashew Nut Ag EIA	Food	--	On Request
Coconut Ag Rapid Test	Food	10 mins	20-20000ug/g
Coconut Ag EIA	Food	60 mins	1-10000ug/g (ppm)
Hazelnut Ag Rapid Test	Food	10 mins	5-50000ug/g (ppm)
Hazelnut Ag EIA	Food	--	On Request
Macadamia Nut Ag Rapid Test	Food	10 mins	10-100000ug/g (ppm)
Macadamia Nut Ag EIA	Food	--	On Request
Peanut Ag Rapid Test	Food	10 mins	10-10000ug/g (ppm)
Peanut Ag EIA	Food	75 mins	1-10000ug/g (ppm)
Dairy/Egg Constituents			
Beta-lactoglobulin Rapid Test	Food	10 mins	1-10000ug/g (ppm)
Beta-lactoglobulin EIA	Food	60 mins	0.2-20000ug/g (ppm)
Conalbumin (Egg Ag) Rapid Test	Food	10 mins	0.35-20000ug/g (ppm)
Conalbumin (Egg Ag) EIA	Food	60 mins	0.07-15000ug/g (ppm)
Dried Milk Ag EIA	Dairy Products	45 mins	0.025-20%
Ovalbumin Rapid Test	Food	10 mins	0.1-10000ug/g (ppm)
Fish/Meat Constituents			
Fish Bone Ag Rapid Test	Food	10 mins	0.5-10000ug/g (ppm)
Fish Bone Ag EIA	Food	60 mins	0.25-20000ug/g (ppm)
Cartilaginous Fish (Sturgeon) Ag EIA	Food	60 mins	2.5-10000ug/g (ppm)
Crustacean Ag Rapid Test	Food, surface wash	10 mins	2-10000ug/g (ppm)
Crustacean Ag EIA	Food	60 mins	1.5-10000ng/g (ppb)
Pork Ag Rapid Test	Food	10 mins	0.15% (1500 ppm)
Pork Ag EIA	Food	60 mins	20-20000ug/g (ppm)
Other Allergens			
Gliadin (Gluten) Rapid Test	Food	10 mins	0.2-20000ug/g (ppm)
Soft Wheat Gliadin (Durum) EIA	Food	90 mins	0.2-20%
Soy Tripsin Inhibitor Rapid Test	Food	10 mins	1-100000ug/g (ppm)
Soy Beta-conglycinin EIA	Food	60 mins	1ug/g (ppm)
Celery Ag Rapid Test	Food	10 mins	5-200000ug/g (ppm)
Mustard Ag Rapid Test	Food	10 mins	6-15000ug/g (ppm)
Mustard Ag EIA	Food	60 mins	4-20000ug/g (ppm)

Diagnostic Glass Vials



Our diagnostic glass vials are made from high quality low borosilicate or neutral tubular glass and have a wider neck compared to our dropper glass vials. These vials are compatible with our polypropylene caps as well as rubber stoppers, making them suitable for a variety of production and laboratory uses. Compatible with our EPE Lined Caps (see below)

Product Description	Cat. No.
3ml Clear Diagnostic Vial	VI-0311-C3
5ml Clear Diagnostic Vial	VI-0511-C3
10ml Clear Diagnostic Vial	VI-1012-C5
20ml Clear Diagnostic Vial	VI-2012-C5
25ml Clear Diagnostic Vial	VI-2511-C4
30ml Clear Diagnostic Vial	VI-3011-C5

Product Description	Cat. No.
3ml Amber Diagnostic Vial	VI-0322-A3
5ml Amber Diagnostic Vial	VI-0522-A3
10ml Amber Diagnostic Vial	VI-1022-A5
20ml Amber Diagnostic Vial	VI-2021-A5
25ml Amber Diagnostic Vial	VI-2521-A5
30ml Amber Diagnostic Vial	VI-3021-A5

Expanded Polyethylene (EPE) Lined Caps for Glass Vials

Our EPE lined polypropylene closures offer excellent sealing qualities for our glass vials and bottles. These caps have a fine knurled finish, providing a secure grip for tightening and handling. Polypropylene caps are one of the most reliable methods of sealing screw-necked vials and bottles securely, whilst our UREA caps are ideal for larger sized vials.



Product Description	Cat. No.
Black 15.5mm EPE Cap (for 3-5ml Diagnostic Vials)	BC-1541-B2
White 15.5mm EPE Cap (for 3-5ml Diagnostic Vials)	BC-1541-W2
Red 15.5mm EPE Cap (for 3-5ml Diagnostic Vials)	BC-1541-RED
Blue 15.5mm EPE Cap (for 3-5ml Diagnostic Vials)	BC-1541-BLU
White 23.5mm UREA Cap (for 10, 20 & 30ml Diagnostic Vials)	BC-2231-W2

PETg Vials

PETg (Polyethylene Terephthalate Glycol) is a fully recyclable, durable plastic with excellent chemical resistance, making it ideal for laboratory use*. Exposure to UV light should be avoided.



Product Description	Cat. No.
5ml PETg Clear Dropper Vial	PB-0501-PET
10ml PETg Clear Dropper Vial	PB-1001-PET

HDPE Bottles

HDPE bottles are suitable for storing most acids, bases and alcohols, making them useful for general purpose laboratory and liquid storage applications such as buffers, bench reagents and dilute chemical aliquots*. All our HDPE bottles are extremely durable and supplied with robust caps. Our HDPE containers can be used for long-term storage, although direct UV exposure should be avoided. HDPE can also be recycled.



Product Description	Cat. No.
3ml HDPE Bottle and Cap (Natural) - includes dripper insert	PB-0301-HDPE
4ml HDPE Bottle and Cap (Natural)	PB-0401-HDPE
8ml HDPE Bottle and Cap (Natural)	PB-0801-HDPE
8ml HDPE Bottle and Cap (Brown)	PB-0802-HDPE
15ml HDPE Bottle and Cap (Natural)	PB-1501-HDPE
30ml HDPE Bottle and Cap (Natural)	PB-3001-HDPE
30ml HDPE Bottle and Cap (Brown)	PB-3002-HDPE
60ml HDPE Bottle and Cap (Natural)	PB-6001-HDPE
60ml HDPE Bottle and Cap (Brown)	PB-6002-HDPE
100ml HDPE Bottle and Cap (Natural)	PB-1001-HDPE
125ml HDPE Bottle and Cap (Natural)	PB-1251-HDPE

Glass Dropper Vials



Our high quality glass dropper vials are manufactured from tough clear or amber tubular neutral or low borosilicate glass. We can also produce vials and droppers to your specification or design, just get in touch.

Clear Dropper Vials

Product Description	Cat. No.
3ml Dropper Vial	VI-0301-C4
5ml Dropper Bijou Vial	VI-0511-C4
7ml Dropper Bijou Vial	VI-0711-C4
10ml Dropper Vial	VI-1011-C4
5ml Vial suitable for CRC & T/E Closures (DIN18 Thread)	VI-0514-C4
10ml Vial suitable for CRC & T/E Closures (DIN18 Thread)	VI-1014-C4
20ml Vial suitable for CRC & T/E Closures	VI-2014-C4
30ml Vial suitable for CRC & T/E Closures	VI-3014-C4

Amber Dropper Vials

Product Description	Cat. No.
5ml Dropper Bijou Vial	VI-0711-A4
10 Dropper Vial (22mm diameter)	VI-1021-A4
10ml Narrow Dropper Vial (18mm diameter)	VI-1025-A4
5ml Vial suitable for CRC & T/E Closures (DIN18 Thread)	VI-0514-C4
10ml Vial suitable for CRC & T/E Closures (DIN18 Thread)	VI-1014-C4

Compatible Closures



Dropper Assemblies

* Some colour/size combinations may only be available as a custom order, please contact us for details.

Product Description	Cat. No.	Colours*
3ml Dropper Assembly	AD-0301	●●●
5ml Dropper Assembly	AD-0501	●●●●●●
7ml Dropper Assembly	AD-0701	●●●●●●
10ml Dropper Assembly	AD-1001	●●●●●●

18mm EPE Lined PP Caps

Suitable for all 7ml & 10ml Glass Dropper Vials, and all size DIN18 Dropper bottles (see below).



Product Description	Cat. No.
Black 18mm PP Cap	BC-2232-B2
White 18mm PP Cap	BC-2233-W2
Red 18mm PP Cap	BC-2233-RED
Green 18mm PP Cap	BC-2233-GRN
Blue 18mm PP Cap	BC-2233-BLU

DIN18 Glass Dropper Bottles



Our glass dropper bottles are hugely popular thanks to the wide variation in sizes and colours available. All of our bottles are made of soda lime type 3 glass and have a DIN18 thread as standard, making them suitable for a variety of dropper/pipette assemblies, caps and closures. Bottles are packed and sealed in plastic trays.

Available sizes: 5ml, 10ml, 15ml, 20ml, 30ml, 50ml, 100ml

Available colours: Amber, Blue, Clear, Green, Matt Black, Matt White.

Compatible Closures

Tamper Evident Black Cap with Drifter Insert: Polypropylene cap with 0.6mm nylon drifter insert. Approximate drop sizes: Water - 50µl; Oil - 28µl; Alcohol (70%) - 24µl.

Black Tamper Evident (T/E) Ball Ended Dropper Assemblies: Available in sizes 5ml, 10ml, 15ml, 20ml, 30ml, 50ml and 100ml.

At Rapid Labs we are proud to offer great reliable service to our many customers around the world. But don't just take our word for it, here's what some of our customers are saying about us:

'Following the recent outbreak of Dengue Fever in the Philippines, Rapid Labs were quick to respond to our requests, and we have been able to provide their Rapid Tests to hospitals for successful diagnosis and screening of Dengue Fever.'

'We have worked with Rapid Labs for over 10 years now, and we are exceptionally happy with the quality of their products and fantastic customer support.'

'High quality products, Competitive prices. A team that cares. That is a winning combination!'

'Super happy - great product, great delivery and great service'

'Excellent service, fast delivery, great products'

'Perfect service from start to finish'

Notes



Please visit our website for more information

www.rapidlabs.co.uk

RPR Test Kit – 100, 250 & 500 Tests

(Rapid Plasma Reagin Test)



Cat. No.	Product Description
D-RPR500	RPR 500 Test Kit
D-RPR250	RPR 250 Test Kit
D-RPR100	RPR 100 Test Kit

Rapid Plasma Reagin Card test for the Serodiagnosis of Syphilis.

For in-vitro diagnostic use only.

INTRODUCTION AND INTENDED USE

RAPID LABS RPR is for use in the non-treponemal flocculation test for the qualitative and semi-quantitative determination of reagin antibodies in serum or plasma.
For professional use only.

PRINCIPLE OF THE TEST

RAPID LABS RPR is a modified form of VDRL ANTIGEN which contains carbon particles to improve the visual reading of the result. When binding occurs between cholesterol/ cardiolipin/ lecithin in the reagent and the reagin antibodies in the sample, the results can be seen macroscopically in the form of black clumps. No visual flocculation indicates a negative result.

The test can be performed on heated, unheated serum or plasma and is therefore very versatile. **RAPID LABS RPR** can be used in the manual slide test and on single and multi-channel auto analyser instruments that are used in blood banks for mass Syphilis screening of routine blood bank donations.

This test has been calibrated to WHO Reference Serum for **Serodiagnostic** tests for Treponemal Infections- Ref 3-1980.

KIT CONTENTS

Kit size (no. of tests)	100	250	500
RPR Carbon Antigen	2ml	5ml	10ml
Positive Control	1ml	1ml	1ml
Negative Control	1ml	1ml	1ml
Stirrers	100	250	500
Test Slides	10	25	50
Dispensing Bottle	1	1	1
Dispensing tip	1	1	1
Pack insert (IFU)	1	1	1

RPR Carbon Antigen - Suspension of Carbon approximately 0.2g/L, 0.003% Cardiolipin, 0.02% Lecithin and 0.09% Cholesterol Working Strength.

Positive Control + Positive Control. Serum containing antibodies against Treponema Pallidum. Working Strength.

Negative Control –Negative Control. Serum free of antibodies against Treponema Pallidum. Working Strength.

MATERIALS REQUIRED, BUT NOT PROVIDED

Micropipettes capable of dispensing 50µl and 16µl.
Test tubes 75 x 12mm
Rotator set at 100 r.p.m.
Isotonic saline: 0.9% NaCl

PRECAUTIONS

The serum controls are of human origin and have been tested for and confirmed negative for HCV, HIV I and HIV II antibodies, and

HBsAg by FDA approved procedures. Because no test can offer complete assurance that products derived from human source will not transmit infectious agents it is recommended that the reagents within this kit be handled with due care and attention during use and disposal. All reagents should, however, be treated as potential biohazards in use and for disposal. Do not ingest.

RAPID LABS RPR Reagents do not contain dangerous substances as defined by current UK Chemicals (Hazardous Information and Packaging for Supply) regulations. All reagents should, however, be treated as potential biohazards in use and disposal. Final disposal must be in accordance with local legislation.

RAPID LABS RPR contains 0.095% sodium azide as a preservative which may be toxic if ingested. Sodium azide may react with lead and copper plumbing to form highly explosive salts. On disposal, flush with large quantities of water.

STORAGE

Reagents must be stored at temperatures between 2°C to 8°C.

The kit will perform within specification until the stated expiry date as determined from date of product manufacture and stated on kit and components. Expiry date is the last day of the month on the bottle and the kit label. Do not use reagents after the expiry date.

Exposure of reagents to excessive temperatures should be avoided. Do not expose to direct sunlight.

DO NOT FREEZE ANY OF THE REAGENTS as this will cause irreversible damage.

Do not store the test cards in the refrigerator, store at room temperature and ensure that the test circles are not touched by the fingers. This could leave oily deposits on the test surface which might invalidate the test results.

SPECIMEN COLLECTION AND PREPARATION

Serum:

Obtain a sample of venous blood from the patient and allow a clot to form and retract. Centrifuge clotted blood sample and collect clear serum. Fresh serum samples are required.

Plasma:

Obtain a sample of venous blood from the patient and add to plasma collection vial. Centrifuge sample and collect clear plasma. Fresh plasma samples are required.

Do not use haemolysed, contaminated or lipaemic serum or plasma for testing as this will adversely affect the results.

Serum may be stored at 2°C to 8°C for up to 48 hours prior to testing. If longer storage is required, store at –20°C for up to 6 weeks. Thawed samples must be mixed prior to testing.

Do not repeatedly freeze-thaw the specimens as this will cause false results.

DO NOT DILUTE THE PATIENT SERUM PRIOR TO USE IN THE QUALITATIVE TEST.

REAGENT PREPARATION

All reagents should be brought to room temperature (20°C to 25°C) and mixed gently prior to use. Do not induce foaming.

Shake the Antigen suspension well to ensure a homogeneous suspension before use. The kit contains an antigen dispensing system comprising a 3ml plastic (LDPE) bottle and a pipette tip

RPR Test Kit – 100, 250 & 500 Tests

(Rapid Plasma Reagin Test)



For use, remove the white cap from the plastic bottle and fill with reagent from the 10ml vial using the dropper assembly provided with vial, then fit the pipette tip securely in the bottle. Alternatively, the plastic bottle can be filled from the glass reagent vial by fitting the pipette tip and filling by squeezing the plastic bottle and inserting the end of the pipette tip into the well shaken antigen suspension.

Then allow the plastic bottle to expand and this will then allow the antigen up into the bottle. Storage of the antigen in the plastic bottle reduces the shelf life of the product. It is recommended that any remaining antigen in the bottle after a day's testing should be returned to the original glass vial. The plastic bottle/needle dispenser should then be rinsed through with distilled water and air dried.

LIMITATIONS OF USE

The use of samples other than serum or plasma has not been validated in this test.

There is no reuse protocol for this product.

A low or suspected positive result should be re-assessed. Diagnosis should not be made solely on the findings of one clinical assay. When making an interpretation of the test it is strongly advised to take all clinical data into consideration.

False positive reactions are known to occur with RPR tests when the patient has infections other than Syphilis. If a positive RPR result is found, a specific treponemal test should be performed. Rapid Labs manufacture and supply TPHA test kits for the detection of specific anti-treponemal antibodies.

ASSAY PROCEDURE

Manual Slide Method

1. Dispense one drop (50µl) of patient sample onto a glass slide or RPR Test Card. Spread to cover the entire circle.
2. Spread the sample over the entire area of the test circle using the flat end of the pipette/stirrer.
3. Using the dispensing bottle/needle assembly allow one free-falling drop (16µl) of antigen to drop onto the test specimen. Do not re-stir.
4. Rotate the test card at 100 r.p.m. for 8 minutes only on an automatic rotator.
5. Immediately after the 8 minutes inspect the result visually in good light.

Semi Quantitative Method

1. Using isotonic saline prepare serial dilutions (50µl) of the patients serum (1/2, 1/4, 1/8, 1/16, 1/32, 1/64 and so on)
2. Transfer one drop of each serum dilution to the test circle on the slide.
3. Add one drop (16µl) of shaken antigen to the sample. (There is no need to mix these two components).
4. Rotate the slide/card for 8 minutes at 100 r.p.m.
5. Immediately after the 8 minutes, inspect the result visually in good light

RESULTS AND INTERPRETATION

Kit controls or known level value samples should be tested with each test run. The kit negative control should give a negative result after 8 minutes. The kit positive control should give a positive result at a titre of 1/4 +/- one double dilution after 8 minutes. If levels of controls or users known samples do not give expected results, test results must be considered invalid.

Qualitative Method

Medium and large aggregates	Reactive
Finely dispersed aggregates	Weak Reactive
No aggregates visible smooth grey appearance	Non-Reactive

Semi-Quantitative Method

The titre is the last dilution that produces a reactive result. Titres of 1/128 have been detected with **RAPID LABS RPR** with no prozone (Hook) effect.

TROUBLESHOOTING

Use a separate disposable tip for each sample to prevent cross contamination.

Replace caps on all reagents immediately after use. Prior to the start of the assay bring all reagents to room temperature (20°C to 25°C). Gently mix all reagents by gentle inversion or swirling.

For use by operatives with at least a minimum of basic laboratory training.

Do not use damaged or contaminated kit components.

BIBLIOGRAPHY

A Manual of Tests for Syphilis: Larsen et al. 1998 p 193 – 207

Syphilis Serology Principles and Practice : G.D. Wasley and H.H.Y. Wong 1988 p48 -49

KEY TO SYMBOLS:



Manufactured in the UK by: Rapid Labs Ltd
Unit 2 & 2a, Hall Farm Business Centre, Church Road
Little Bentley, Colchester, Essex CO7 8SD, U.K.
Manufactured in the U.K.

Email: info@rapidlabs.co.uk Website www.rapidlabs.co.uk

IVD	<i>In vitro</i> diagnostic medical device		Use by date
LOT	Batch code or lot number	REF	Catalogue number
+2°C - +8°C	Temperature limit		Consult Instruction for use (IFU)
	Manufacturer		Date of manufacture

TPHA - 100, 200 & 500 Tests



Instructions for use A passive particle agglutination assay for the qualitative and semi-quantitative detection of IgG and IgM antibodies to *Treponema pallidum*



For professional *in vitro* diagnostic use only

Cat. No.	Product Description
RL-TPHA100	TPHA 100 Test Kit
RL-TPHA200	TPHA 200 Test Kit
RL-TPHA500	TPHA 500 Test Kit

INTRODUCTION AND INTENDED USE

Syphilis is caused by the spirochaete *Treponema pallidum*, and is usually acquired by sexual contact, although the disease may be transmitted by transfusion of infected blood. Intrauterine infection also occurs. The infection is a chronic condition that typically progresses through distinct primary, secondary, tertiary, and quaternary stages of infection. These stages produce diverse clinical symptoms, typically producing initial sores known as chancres, then syphilitic rash followed by long periods of dormancy. Untreated infection may eventually result in cardiovascular problems and neurosyphilis. The organism cannot be routinely cultured in artificial media, and diagnosis of the infection usually depends on the demonstration of antibodies in the blood, which appear soon after initial infection.

Rapid Labs-TPHA is for the detection of antibodies to *Treponema pallidum* in human serum and plasma, **for professional use only.**

PRINCIPLE OF THE TEST

Rapid Labs-TPHA uses preserved avian erythrocytes coated with extracted antigens of *T. pallidum* (Nichols strain). Specific antibodies present in a sample of plasma or serum bind to these antigens when the sample is incubated with the particles. This causes the particles to agglutinate, then settle to form a characteristic pattern in the test well. Non-specific reactions are eliminated by the use of absorbents. The assay can be run and interpreted manually or with an auto-analyzer using an agglutination interpretation program.

KIT CONTENTS

Name	Description	100 tests	200 tests	500 tests
Test Cells	Avian erythrocytes coated with antigens of <i>T. pallidum</i>	8.5 mL	2 x 8.5 mL or 1 x 17mL	2 x 20 mL or 1 x 40 mL
Control Cells	Preserved chicken erythrocytes, not coated	8.5 mL	2 x 8.5 mL or 1 x 17mL	2 x 20 mL or 1 x 40 mL
Sample Diluent	Saline solution containing absorbents	20 mL	2 x 20mL or 1 x 40mL	2 x 50mL
Positive Control	Rabbit antiserum Titre 1/1280 Pre-diluted	1 mL	1 mL	1 mL
Negative Control	Normal Rabbit Serum Pre-diluted	1 mL	1 mL	1 mL

WARNINGS AND PRECAUTIONS

For *in-vitro* diagnostic use only.

Kit controls contain material of animal origin. All human samples should be handled and disposed of according to local guidelines. Reagents contain sodium azide (< 0.1% w/v) which can accumulate in lead or copper pipes to form potentially explosive salts.

STORAGE

Store bottles upright at 2–8°C. **Do not freeze**
Do not use after the expiry date.

LIMITATIONS OF USE

Rapid Labs TPHA may be used for serum, plasma and CSF samples. No interfering substances have been identified however TPHA can cross react with other treponemal infections such as *T. pertenu* and *T. carateum* so positive results should be confirmed by another method. In early primary syphilis, occasionally, specific antibodies may not be detected.

SAMPLES

Use fresh serum or plasma samples free of cells and microbial contamination. Samples may be stored at 2-8°C for up to 7 days prior to testing. Samples can be frozen at -20°C or lower, these should be thawed and mixed prior to testing.

ASSAY PROCEDURE

Equipment Required

Micro-pipettes capable of delivering: 10, 25, 75 and 190µL
96-well U well micro-plates.
Rapid Labs-TPHA may be used in combination with automated liquid handling or pattern interpretation equipment. Consult manufacturers for advice.

Bring all reagents and samples to room temperature before use.
Kit controls must be run with each assay.
Ensure Test and Control Cells are thoroughly re-suspended.

Qualitative Assay

Each sample requires 3 wells.
Note: For Rapid Labs-TPHA 500 only run Control Cells on retest.

1. Sample Dilution (to 1 in 20)

Add 190µL of sample diluent to the first well.
Add 10µL of sample to the same well.
Mix thoroughly.
Note: Kit controls must be run as samples (i.e. diluted 1 in 20)

2. Test

Transfer 25µL of diluted sample from step 1 to test well.
Transfer 25µL of diluted sample from step 1 to control well.
Re-suspend the Test and Control Cells thoroughly.
Add 75µL of Test Cells to test well, and 75µL Control Cells to the control well.
(Final sample dilution is 1 in 80)
Mix wells thoroughly.
Incubate at 15-30°C on a vibration-free surface for 45 - 60 minutes.
Read the agglutination patterns. Patterns are stable if undisturbed.

Semi Quantitative Assay

9 wells are needed for each sample.

1. Sample Dilution (to 1 in 20)

Add 190µL of sample diluent to a well.
Add 10µL of sample to the same well.
Mix thoroughly.
Note: Kit controls are pre-diluted (i.e. diluted 1 in 20)

2. Titration

Leave the first well empty, add 25µL of diluent all other wells in the sequence.
Transfer 25µL from step 1 to the first well.
Transfer 25µL from step 1 to the second well and mix, then serially dilute along the well sequence, discard the excess 25µL from the final well.

3. Test

Re-suspend the Test and Control Cells thoroughly
Add 75µL of Test Cells to each well.

(Final sample dilution is 1 in 80 – 1 in 10,240)

Mix wells thoroughly.

Incubate at 15-30°C on a vibration-free surface for 45 - 60 minutes.

Read the agglutination patterns.

Patterns are stable if undisturbed.

The titre of the sample is the reciprocal of the final positive sample dilution.

INTERPRETATION AND ASSAY VALIDATION

Assay Control

The Kit Controls must give the correct result; Negative is Negative and Positive is Positive. When the Kit Positive is titrated the expected end point is 640 - 2560



Positive Equivocal Negative

A sample where the Test Cell well is non-reactive should be considered as **negative for *T.pallidum***.
Reactivity less than equivocal is considered negative.

A sample where the Test Cell well is reactive indicates antibodies to *T.pallidum* resulting from a syphilis infection. The sample should be repeated in duplicate. Where 2 or more wells are positive the sample should be considered as **positive for *T.pallidum***.

A repeatable equivocal sample should be considered positive.

Where a sample is reactive in both Test and Control Cells, if the agglutination is greater in the Test Cells then the sample is considered positive and should be repeated as above.

Where a sample has greater or equal agglutination in the Control Cells then the sample should be absorbed using the following procedure.

Absorption of Non-specific Reactions

1. Add 10µL of sample to 190µL of re-suspended Control Cells, mix thoroughly and leave for 30 minutes.
2. Centrifuge to deposit the cells at a minimum of 1500g for 3 minutes.
3. Add 25µL of supernatant from step 2 to each of 2 wells.
4. Ensure Test and Control Cells are re-suspended.
Add 75µL of Test Cells to the first well.
Add 75µL of Control Cells to the second well.
5. Mix wells thoroughly and Incubate at 15-30°C on a vibration-free surface for 45 - 60 minutes
6. Read and interpret patterns as above.

PERFORMANCE CHARACTERISTICS

Specificity

A study on 300 donor serum showed 100% specificity.
(95% confidence limits 99.7 – 100%)

A study on 300 donor EDTA plasma showed 100% specificity.
(95% confidence limits 99.7 – 100%)

Sensitivity

A study on 100 syphilis positive samples showed 100% sensitivity.
(95% confidence limits 99.6 – 100%)


Analytical sensitivity

Rapid Labs-TPHA has a sensitivity of 0.05 IU/ml against the 1st IS for human syphilitic plasma IgG and IgM NIBSC code: 05/132





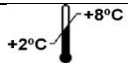



REFERENCES

1. Rathlev T. - Haemagglutination tests utilizing antigens from pathogenic and apathogenic *Treponema pallidum* WHO/VDT/RES 1965 ; 77 : 65.
2. Tomizawa T, Kasamatsu S. - Haemagglutination tests for diagnosis of syphilis. A preliminary report. Japan. J. Med. Sci. Biol. 19, 305-308, 1966.
3. Rathlev T. - Haemagglutination test utilizing pathogenic *Treponema pallidum* for the serodiagnosis of syphilis. Br J Vener Dis 1967 ; 43 : 181-5
4. Tomizawa T, Kasamatsu S, Yamaya S. - Usefulness of the haemagglutination test using *Treponema pallidum* antigen (TPHA) for the serodiagnosis of syphilis. Jap J Med Sci Biol 1969 ; 22 : 341-50.
5. Sequeira P,J,L. Eldridge A,E. - Treponemal Haemagglutination test. Br J Vener Dis 1973 ; 49 : 242-8.
6. Larsen S.A., Hambie E.A., et coll., Specificity, sensitivity and reproducibility among the fluorescent treponemal antibody absorption test, the microhemagglutination assay for *Treponema pallidum* antibodies, and the hemagglutination treponemal test for syphilis. J. Clin. Microbiol., 1981 ; 14 : 441 – 445.
7. Wasley G.D. & Wong H.H.Y. Syphilis Serology Principles and Practice. Oxford Medical Publications 104 - 105

KEY TO SYMBOLS:

 Manufactured in the UK by: Rapid Labs Ltd
Unit 2 & 2a, Hall Farm Business Centre, Church Road
Little Bentley, Colchester, Essex CO7 8SD, U.K.
Manufactured in the U.K.

Email: info@rapidlabs.co.uk Website www.rapidlabs.co.uk

	<i>In vitro</i> diagnostic medical device		Use by date
	Batch code or lot number		Catalogue number
	Temperature limit		Consult Instruction for use (IFU)
	Manufacturer		Date of manufacture

TPHA - 100, 200 & 500 Tests



Instructions for use A passive particle agglutination assay for the qualitative and semi-quantitative detection of IgG and IgM antibodies to *Treponema pallidum*



For professional *in vitro* diagnostic use only

Cat. No.	Product Description
RL-TPHA100	TPHA 100 Test Kit
RL-TPHA200	TPHA 200 Test Kit
RL-TPHA500	TPHA 500 Test Kit

INTRODUCTION AND INTENDED USE

Syphilis is caused by the spirochaete *Treponema pallidum*, and is usually acquired by sexual contact, although the disease may be transmitted by transfusion of infected blood. Intrauterine infection also occurs. The infection is a chronic condition that typically progresses through distinct primary, secondary, tertiary, and quaternary stages of infection. These stages produce diverse clinical symptoms, typically producing initial sores known as chancres, then syphilitic rash followed by long periods of dormancy. Untreated infection may eventually result in cardiovascular problems and neurosyphilis.

The organism cannot be routinely cultured in artificial media, and diagnosis of the infection usually depends on the demonstration of antibodies in the blood, which appear soon after initial infection.

Rapid Labs-TPHA is for the detection of antibodies to *Treponema pallidum* in human serum and plasma, **for professional use only**.

PRINCIPLE OF THE TEST

Rapid Labs-TPHA uses preserved avian erythrocytes coated with extracted antigens of *T. pallidum* (Nichols strain). Specific antibodies present in a sample of plasma or serum bind to these antigens when the sample is incubated with the particles. This causes the particles to agglutinate, then settle to form a characteristic pattern in the test well. Non-specific reactions are eliminated by the use of absorbents. The assay can be run and interpreted manually or with an auto-analyzer using an agglutination interpretation program.

KIT CONTENTS

Name	Description	100 tests	200 tests	500 tests
Test Cells	Avian erythrocytes coated with antigens of <i>T. pallidum</i>	8.5 mL	2 x 8.5 mL or 1 x 17mL	2 x 20 mL or 1 x 40 mL
Control Cells	Preserved chicken erythrocytes, not coated	8.5 mL	2 x 8.5 mL or 1 x 17mL	2 x 20 mL or 1 x 40 mL
Sample Diluent	Saline solution containing absorbents	20 mL	2 x 20mL or 1 x 40mL	2 x 50mL
Positive Control	Rabbit antiserum Titre 1/1280 Pre-diluted	1 mL	1 mL	1 mL
Negative Control	Normal Rabbit Serum Pre-diluted	1 mL	1 mL	1 mL

WARNINGS AND PRECAUTIONS

For *in-vitro* diagnostic use only.

Kit controls contain material of animal origin. All human samples should be handled and disposed of according to local guidelines.

Reagents contain sodium azide (< 0.1% w/v) which can accumulate in lead or copper pipes to form potentially explosive salts.

STORAGE

Store bottles upright at 2–8°C. **Do not freeze**
Do not use after the expiry date.

LIMITATIONS OF USE

Rapid Labs TPHA may be used for serum, plasma and CSF samples. No interfering substances have been identified however TPHA can cross react with other treponemal infections such as *T. pertenu* and *T. carateum* so positive results should be confirmed by another method. In early primary syphilis, occasionally, specific antibodies may not be detected.

SAMPLES

Use fresh serum or plasma samples free of cells and microbial contamination.

Samples may be stored at 2-8°C for up to 7 days prior to testing. Samples can be frozen at -20°C or lower, these should be thawed and mixed prior to testing.

ASSAY PROCEDURE

Equipment Required

Micro-pipettes capable of delivering: 10, 25, 75 and 190µL
96-well U well micro-plates.

Rapid Labs-TPHA may be used in combination with automated liquid handling or pattern interpretation equipment. Consult manufacturers for advice.

Bring all reagents and samples to room temperature before use. Kit controls must be run with each assay.

Ensure Test and Control Cells are thoroughly re-suspended.

Qualitative Assay

Each sample requires 3 wells.

Note: For Rapid Labs-TPHA 500 only run Control Cells on retest.

1. Sample Dilution (to 1 in 20)

Add 190µL of sample diluent to the first well.

Add 10µL of sample to the same well.

Mix thoroughly.

Note: Kit controls must be run as samples (i.e. diluted 1 in 20)

2. Test

Transfer 25µL of diluted sample from step 1 to test well.

Transfer 25µL of diluted sample from step 1 to control well.

Re-suspend the Test and Control Cells thoroughly.

Add 75µL of Test Cells to test well, and 75µL Control Cells to the control well.

(Final sample dilution is 1 in 80)

Mix wells thoroughly.

Incubate at 15-30°C on a vibration-free surface for 45 - 60 minutes.

Read the agglutination patterns. Patterns are stable if undisturbed.

Semi Quantitative Assay

9 wells are needed for each sample.

1. Sample Dilution (to 1 in 20)

Add 190µL of sample diluent to a well.

Add 10µL of sample to the same well.

Mix thoroughly.

Note: Kit controls are pre-diluted (i.e. diluted 1 in 20)

2. Titration

Leave the first well empty, add 25µL of diluent all other wells in the sequence.

Transfer 25µL from step 1 to the first well.

Transfer 25µL from step 1 to the second well and mix, then serially dilute along the well sequence, discard the excess 25µL from the final well.

3. Test

Re-suspend the Test and Control Cells thoroughly
Add 75µL of Test Cells to each well.

(Final sample dilution is 1 in 80 – 1 in 10,240)

Mix wells thoroughly.

Incubate at 15-30°C on a vibration-free surface for 45 - 60 minutes.

Read the agglutination patterns.

Patterns are stable if undisturbed.

The titre of the sample is the reciprocal of the final positive sample dilution.

INTERPRETATION AND ASSAY VALIDATION

Assay Control

The Kit Controls must give the correct result; Negative is Negative and Positive is Positive. When the Kit Positive is titrated the expected end point is 640 - 2560



Positive

Equivocal Negative

A sample where the Test Cell well is non-reactive should be considered as **negative for *T.pallidum***.
Reactivity less than equivocal is considered negative.

A sample where the Test Cell well is reactive indicates antibodies to *T.pallidum* resulting from a syphilis infection. The sample should be repeated in duplicate. Where 2 or more wells are positive the sample should be considered as **positive for *T.pallidum***.

A repeatable equivocal sample should be considered positive.

Where a sample is reactive in both Test and Control Cells, if the agglutination is greater in the Test Cells then the sample is considered positive and should be repeated as above.

Where a sample has greater or equal agglutination in the Control Cells then the sample should be absorbed using the following procedure.

Absorption of Non-specific Reactions

1. Add 10µL of sample to 190µL of re-suspended Control Cells, mix thoroughly and leave for 30 minutes.
2. Centrifuge to deposit the cells at a minimum of 1500g for 3 minutes.
3. Add 25µL of supernatant from step 2 to each of 2 wells.
4. Ensure Test and Control Cells are re-suspended.
Add 75µL of Test Cells to the first well.
Add 75µL of Control Cells to the second well.
5. Mix wells thoroughly and Incubate at 15-30°C on a vibration-free surface for 45 - 60 minutes
6. Read and interpret patterns as above.

PERFORMANCE CHARACTERISTICS

Specificity

A study on 300 donor serum showed 100% specificity.
(95% confidence limits 99.7 – 100%)

A study on 300 donor EDTA plasma showed 100% specificity.
(95% confidence limits 99.7 – 100%)

Sensitivity

A study on 100 syphilis positive samples showed 100% sensitivity.
(95% confidence limits 99.6 – 100%)

Analytical sensitivity

Rapid Labs-TPHA has a sensitivity of 0.05 IU/ml against the 1st IS for human syphilitic plasma IgG and IgM NIBSC code: 05/132

REFERENCES

1. Rathlev T. - Haemagglutination tests utilizing antigens from pathogenic and apathogenic *Treponema pallidum* WHO/VDT/RES 1965 ; 77 : 65.
2. Tomizawa T, Kasamatsu S. - Haemagglutination tests for diagnosis of syphilis. A preliminary report. Japan. J. Med. Sci. Biol. 19, 305-308, 1966.
3. Rathlev T. - Haemagglutination test utilizing pathogenic *Treponema pallidum* for the serodiagnosis of syphilis. Br J Vener Dis 1967 ; 43 : 181-5
4. Tomizawa T, Kasamatsu S, Yamaya S. - Usefulness of the haemagglutination test using *Treponema pallidum* antigen (TPHA) for the serodiagnosis of syphilis. Jap J Med Sci Biol 1969 ; 22 : 341-50.
5. Sequeira P,J,L. Eldridge A,E. - Treponemal Haemagglutination test. Br J Vener Dis 1973 ; 49 : 242-8.
6. Larsen S.A., Hambie E.A., et coll., Specificity, sensitivity and reproducibility among the fluorescent treponemal antibody absorption test, the microhemagglutination assay for *Treponema pallidum* antibodies, and the hemagglutination treponemal test for syphilis. J. Clin. Microbiol., 1981 ; 14 : 441 – 445.
7. Wasley G.D. & Wong H.H.Y. Syphilis Serology Principles and Practice. Oxford Medical Publications 104 - 105

KEY TO SYMBOLS:



Manufactured in the UK by: Rapid Labs Ltd
Unit 2 & 2a, Hall Farm Business Centre, Church Road
Little Bentley, Colchester, Essex CO7 8SD, U.K.
Manufactured in the U.K.

Email: info@rapidlabs.co.uk Website www.rapidlabs.co.uk

IVD	<i>In vitro</i> diagnostic medical device		Use by date
LOT	Batch code or lot number	REF	Catalogue number
	Temperature limit		Consult Instruction for use (IFU)
	Manufacturer		Date of manufacture