



Receiver

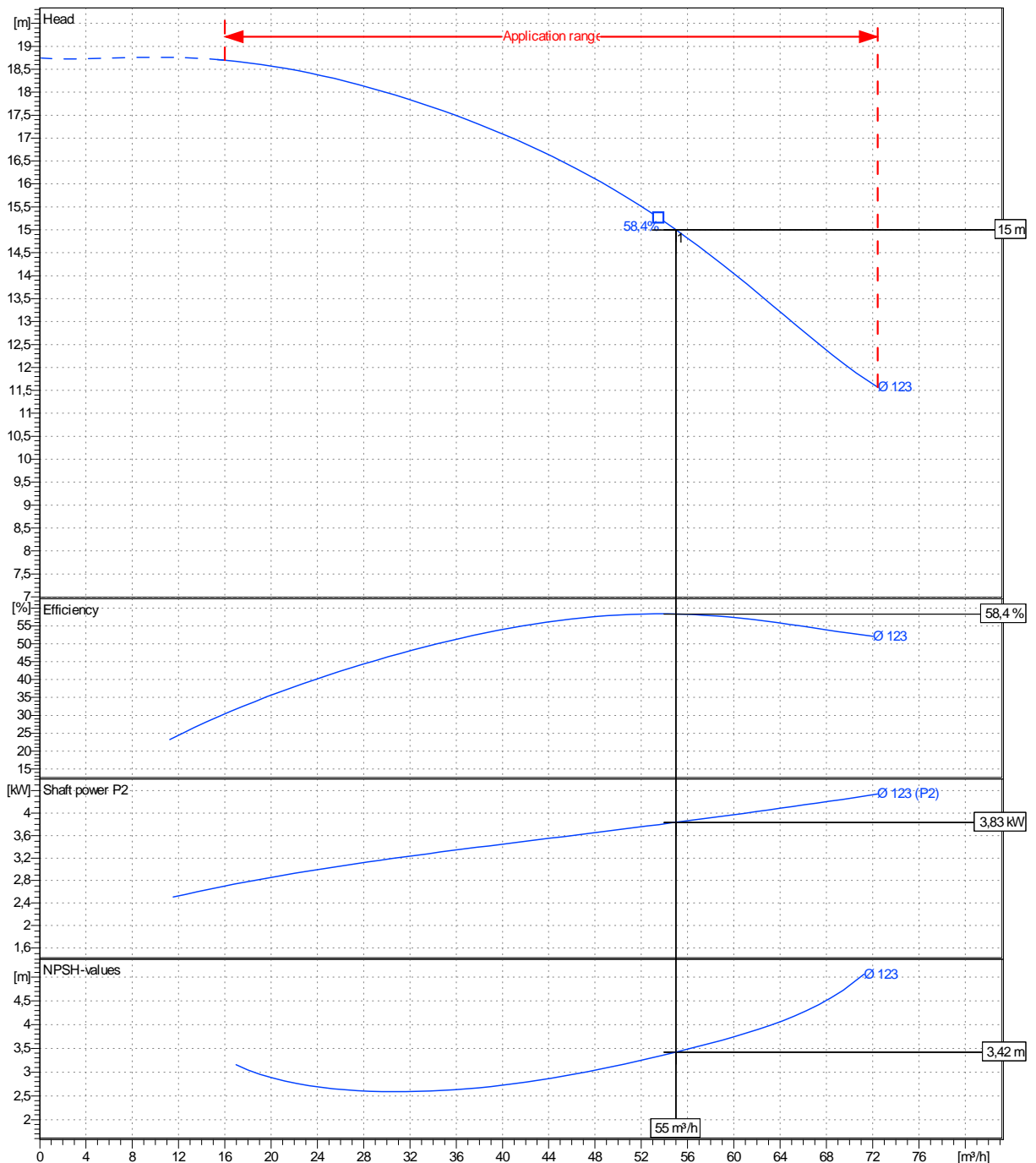
From

 Company name  
 Respons. Department  
 Person in charge  
 Phone number  
 Fax no  
 E-mail address

Operating area	Flow	Head	Impeller type	Radial impeller
Operating data specification	55 m <sup>3</sup> /h	15 m	Impeller construction	Closed
Pump data	55 m <sup>3</sup> /h	15 m	Sense of rotation	Clockwise from the drive end
			Outlet width	DN65
	Flow	Head	Shaft power P2	Speed
	Min. Max. $\eta$ Max.	H(Q=0) $\eta$ Max.	P2(Q=0) Max. $\eta$ Max.	1/min 2900
	m <sup>3</sup> /h m <sup>3</sup> /h m <sup>3</sup> /h	m m	kW kW kW	Hz 50 Hz
	16 72,4 53,5	18,7 15,3	4,34 3,8	

 Performance data based to: Water, pure [100%]; 120°C; 0,998kg/dm<sup>3</sup>; 1mm<sup>2</sup>/s

UNI EN ISO 9906:2012 - Grade 3B



Project

Project ID

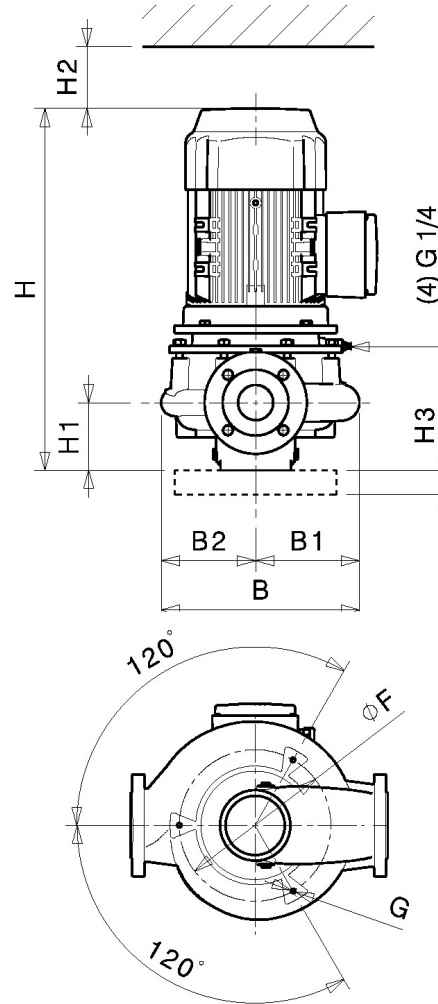
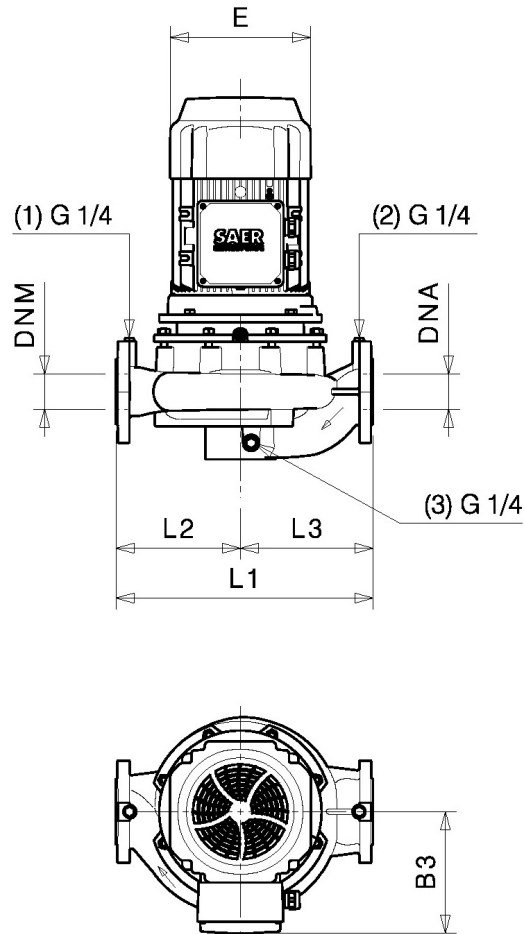
Created by

 Created on  
**2024-05-10**

Last update

Revision no

Pump dimensions



Disegni dimensionali e immagini non vincolanti. Saer si riserva il diritto di effettuare cambiamenti senza alcun preavviso.  
Dimensional drawing and picture are not binding. Saer reserves the right to make changes without prior notice.

Connections

Suction side DN65 PN10 / PN16	Discharge port DN65 PN10 / PN16
-------------------------------------	---------------------------------------

Dimensions in mm

B	261
B1	146
B2	115
B3	150
E	220
F	180
G	M10
H	529
H1	105
H2	130
H3	40
L1	360
L2	160
L3	200

Project

Project ID

Created by

Created on  
2024-05-10

Last update