

**EMSAS<sup>®</sup>**

BLOOD BANK REFRIGERATOR • PLATELET INCUBATOR / AGITATOR • -86 ULT FREEZER - ULTRA LOW TEMPERATURE FREEZER  
 -30 - 40 DEEP FREEZER • LABORATORY AND PLASMA FREEZER • PLASMA THAWER - PLASMA THAWING DEVICE • PHARMACY AND VACCINE REFRIGERATOR  
 COMBINED REFRIGERATOR AND FREEZER • EK SERIE VACCINE FRIDGE • DT 12-24 V MOBILE REFRIGERATOR FOR CAR AND PORTABLE COOLER  
 POWER UNIT • BREAST MILK FRIDGE AND FREEZER • MATERNITY AND NEONATOLOGY DEVICES • BABY BOTTLE WARMER AND INJECTOR HEATER  
 FLUID AND BLANKET WARMING CABINET • INCUBATOR • ETUVE • DRYING AND HEATING OVEN • WATER BATH • COOLED INCUBATOR  
 STABILITY TEST CHAMBER • BOD INCUBATOR

# QUALITY & SAFETY PROTECTION

**Since 1975..**



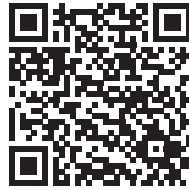
CONFIRMATION  
LETTER-REV



TSE



CERTIFICATE ENG



CERTIFICATE TR



ISO 9001



# INDEX

BLOOD BANK REFRIGERATOR	6
PLATELET INCUBATOR / AGITATOR	8
-86 ULT FREEZER - ULTRA LOW TEMPERATURE FREEZER	10
EE -5 / -30 DEEP FREEZER / LAB FREEZER	12
EF -20 / -40 DEEP FREEZER / PLASMA FREEZER	14
PLASMA THAWER - PLASMA THAWING DEVICE	16
PHARMACY AND VACCINE REFRIGERATOR	18
COMBINED REFRIGERATOR AND FREEZER	20
EK SERIE VACCINE FRIDGE	22
DT 12-24 V MOBILE REFRIGERATOR FOR CAR AND PORTABLE COOLER	23
POWER UNIT	23
BREAST MILK FRIDGE AND FREEZER	25
MATERNITY AND NEONATOLOGY DEVICES	25
BABY BOTTLE WARMER AND INJECTOR HEATER	25
FLUID AND BLANKET WARMING CABINET	27
INCUBATOR	30
ETUVE - DRYING AND HEATING OVEN	32
WATER BATH	32
COOLED INCUBATOR	33
STABILITY TEST CHAMBER	34
BOD INCUBATOR	35



Contact



Promotional Film



Product Introduction  
Videos

# BLOOD BANKING DEVICES



**BLOOD BANK  
REFRIGERATOR**

**EKN**



**-30/-40**

**DEEP FREEZER**

**EE / EF**



**-86**

**ULTRA LOW  
TEMPERATURE  
FREEZER**

**ULT**



**PLASMA  
THAWING DEVICE**

**EPS / EPT**



**PLATELET  
INCUBATOR /  
AGITATOR**

**ECI / EAJ**









## EKN Serie (+4°C)

- Temperature range of +2°C/+8°C , working with 0,1 tolerance
- User-friendly microprocessor digital control panel, capacity to store data in memory for 30 days, login with password protection system.
- USB output
- Ability to record cabinet temperatures to an external USB flash drive for up to 10 years and transfer the data to a PC in Excel format
- Measurement accuracy of  $\pm 0.1^{\circ}\text{C}$
- Equipped with 2 probes: one for measuring the internal cabinet temperature and the other for measuring the temperature of the blood plasma sample
- Double-layer thermal glass doors with locking mechanism and magnetic gaskets
- Cr-Ni 304 stainless steel drawer system with pool-type structure. Each drawer features a plexiglass cover, internal dividers, and reinforcement bars underneath
- Inner chamber made of CR-NI 304 stainless steel
- Multi-air flow system ensures even temperature distribution across all shelves
- Fin evaporator-based cooling system with fully automatic defrost function
- Automatic defrost system
- Built-in rechargeable accumulator system supports the digital control panel and printer for up to 48 hours during power outages
- Visual and audible alarm system activates when upper or lower temperature limits are exceeded, the door is left open, or there is a power outage
- Remote alarm output port
- External sensor input port
- Quiet and vibration-free operation
- LED lighting system
- Equipped with 2 lockable (stopped) wheels and 2 free-moving wheels
- 2-years warranty
- Certified with ISO 9001:2015, ISO 13485, CE, ISO 14001

MODEL	EKN 25 / 70 L	EKN 50 / 167 L	EKN 100 / 225 L	EKN 200 / 380 L	EKN 300 / 630 L	EKN 600 / 1300 L
Temperature Range of	+2°C / +8°C	+2°C / +8°C	+2°C / +8°C	+2°C / +8°C	+2°C / +8°C	+2°C / +8°C
Set Temperature	+4°C	+4°C	+4°C	+4°C	+4°C	+4°C
External Dimensions (WxLxH) mm	450*660*760	600*676*1161	600*671*1361	600*676*2000	765*835*2000	1450*835*2000
Capacity - LT / Bags	70 L / 25 Bags	167 L / 60 Bags	225 L / 120 Bags	380 L / 240 Bags	630 L / 363 Bags	1300 L / 672 Bags
Polyurathane Thickness	41 mm	40 mm	41 mm	41 mm	51,5 mm	44 mm
Packaging Dimensions (WxLxH) mm	580*790*890	605*700*1270	730*690*1550	730*690*2000	900*950*2150	940*1570*2150
Gross KG	65 Kg	97 Kg	128 Kg	175 Kg	229 Kg	380 Kg
Internal Lighting	+	+	+	+	+	+
Door Lock	+	+	+	+	+	+
Alarm	+	+	+	+	+	+
Internal Surface Material	Stainless Steel CR-NI 304	Stainless Steel CR-NI 304	Stainless Steel CR-NI 304	Stainless Steel CR-NI 304	Stainless Steel CR-NI 304	Stainless Steel CR-NI 304
External Surface Material	Galvanized Steel with Electrostatic Powder Coated	Galvanized Steel with Electrostatic Powder Coated	Galvanized Steel with Electrostatic Powder Coated	Galvanized Steel with Electrostatic Powder Coated	Galvanized Steel with Electrostatic Powder Coated	Galvanized Steel with Electrostatic Powder Coated
Heating / Cooling System	Fan-forced	Fan-forced	Fan-forced	Fan-forced	Fan-forced	Fan-forced
Insulation	CFC-Free Polyurathane	CFC-Free Polyurathane	CFC-Free Polyurathane	CFC-Free Polyurathane	CFC-Free Polyurathane	CFC-Free Polyurathane
Number of Stainless Steel Drawers	2	2	3	6	6	12
PC Connection	USB	USB	USB	USB	USB	USB
Castors	2 Braked , 2 Regular	2 Braked , 2 Regular	2 Braked , 2 Regular	2 Braked , 2 Regular	2 Braked , 2 Regular	2 Braked , 2 Regular
Temperature Sensor	NTC	NTC	NTC	NTC	NTC	NTC
Control System	Microprocessor Controlled	Microprocessor Controlled	Microprocessor Controlled	Microprocessor Controlled	Microprocessor Controlled	Microprocessor Controlled
Voltage / Hz	220V-50Hz / 110V-60HZ	220V-50Hz / 110V-60HZ	220V-50Hz / 110V-60HZ	220V-50Hz / 110V-60HZ	220V-50Hz / 110V-60HZ	220V-50Hz / 110V-60HZ
Cooling Gas	R134a/R600/R290	R134a/R600/R290	R134a/R600/R290	R134a/R600/R290	R134a/R600/R290	R134a/R600/R290
Power	230 Watt	230 Watt	230 Watt	277 Watt	400 Watt	400 Watt
Thermal Printer / Graphical Chart Recorder	Optional	Optional	Optional	Optional	Optional	Optional
Natural Gas	Optional	Optional	Optional	Optional	Optional	Optional
SMS and E-mail Module	Optional	Optional	Optional	Optional	Optional	Optional
5/5 inch Touch Screen Display	Optional	Optional	Optional	Optional	Optional	Optional



## PLATELET INCUBATOR



Optional Thermal Printer



Optional Circular Printer



Optional Touch Screen



10 Years of Memory



Receiving Reports  
via USB Memory

## PLATELET AGITATOR





## ECI SERIE INCUBATOR

(+22°C/+24°C)

- Set temperature +22°C, operating with a tolerance of  $\pm 0.5^{\circ}\text{C}$
- User-friendly digital control panel with microprocessor technology
- Data storage capacity for up to 30 days
- Password-protected access for enhanced security
- When the door is opened while the incubator is operating, the internal fan system and platelet agitator stop automatically. Once the door is closed, the system resumes normal operation.
- Inner chamber made of CR-NI 304 stainless steel
- In the event of an agitator failure, the incubator continues to trigger an active alarm.
- USB output
- Capability to store cabinet temperature data to an external flash drive for up to 10 years, with export in Excel format
- Automatic defrost system
- Temperature measurement accuracy of  $\pm 0.1^{\circ}\text{C}$
- Equipped with 2 probes: one measures the internal cabinet temperature, and the other measures the temperature of the liquid sample in the blood component
- Double-layered thermal glass doors, lockable, with magnetic gaskets for secure sealing
- Multi-air flow system ensures uniform temperature distribution across all shelves
- Fin-type evaporator cooling system with fully automatic defrost function
- Built-in rechargeable accumulator system supports the digital control panel and printer for up to 48 hours during power outages
- Visual and audible alarm system activates when upper or lower temperature limits are exceeded, the door is left open, or in the event of a power failure
- Remote alarm output port
- External sensor input port
- Designed for silent and vibration-free operation
- LED lighting system
- 2-years warranty
- Certified with ISO 9001:2015, ISO 13485, CE, ISO 14001

## EAJ SERIE AGITATOR

- 6 to 11 apheresis capacity in each shelf
- Stainless steel shelves with PVC side edges that provide air circulation.
- Operates at 60 strokes per minute
- Low noise level for quiet operation
- 2-years warranty
- Certified with ISO 9001:2015, ISO 13485, CE, ISO 14001



MODEL	EAJ 05	EAJ 09	EAJ-L 09
Capacity / Bags	30 pcs	54 pcs	100 pcs
Voltage / Hz	220 V / 50 HZ	220 V / 50 HZ	220 V / 50 HZ
Net KG	25 KG	28 KG	35 KG
External Dimensions (WxLxH) mm	450*356*350	450*356*450	890*380*450
Packaging Dimensions (WxLxH) mm	550*450*500	550*450*500	970*450*530
Gross KG	32 KG	35 KG	65 KG

MODEL	ECI 01	ECI 02	ECI 03
Temperature Range of	+22°C / +24°C	+22°C / +24°C	+22°C / +24°C
Set Temperature	+22°C	+22°C	+22°C
External Dimensions (WxLxH) mm	600*700*871	1220*700*871	697*1215*2000
Capacity / LT	140 L	320 L	1078 L
Polyurethane Thickness	52 mm	50 mm	50 mm
Gross KG	88 Kg	125 Kg	200 Kg
Internal Lighting	+	+	+
Door Lock	+	+	+
Alarm	+	+	+
Internal Surface Material	Stainless Steel CR-NI 304	Stainless Steel CR-NI 304	Stainless Steel CR-NI 304
External Surface Material	Galvanized Steel with Electrostatic Powder Coated	Galvanized Steel with Electrostatic Powder Coated	Galvanized Steel with Electrostatic Powder Coated
Heating / Cooling System	Fan-forced	Fan-forced	Fan-forced
Insulation	CFC-Free Polyurethane	CFC-Free Polyurethane	CFC-Free Polyurethane
Capacity / Agitator	1 Agitator (EAJ05 or EAJ09)	2 Agitator (EAJ05 or EAJ09) OR 1 Agitator (EAJ-L09)	6 Agitator (EAJ05 or EAJ09) OR 3 Agitator (EAJ-L09)
Cr-Ni Shelves	+	+	+
PC Connection	USB	USB	USB
Castors	2 Braked , 2 Regular	2 Braked , 2 Regular	2 Braked , 2 Regular
Temperature Sensor	NTC	NTC	NTC
Control System	Microprocessor Controlled	Microprocessor Controlled	Microprocessor Controlled
Voltage / Hz	220V-50Hz / 110V-60HZ	220V-50Hz / 110V-60HZ	220V-50Hz / 110V-60HZ
Power	230 Watt	230 Watt	230 Watt
Cooling Gas	R134a/R600/R290	R134a/R600/R290	R134a/R290
Natural Gas	+	+	+
Thermal Printer / Graphical Chart Recorder	Optional	Optional	Optional
SMS and E-mail Module	Optional	Optional	Optional
5/5 inch Touch Screen Display	Optional	Optional	Optional

## -86 ULT FREEZER - ULTRA LOW TEMPERATURE FREEZER

**ULT 200**  
(-50/-86)



240 L

**ULT 470**  
(-50/-86)



470 L

**ULT 730**  
(-50/-86)



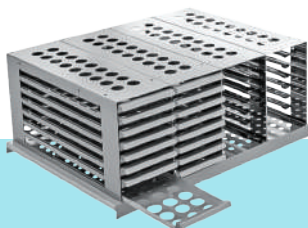
730 L

## CHEST FREEZER

**YULT 350**  
(-50/-86)



Receiving Reports  
via USB Memory



OPTIONAL RACK SYSTEM



OPTIONAL TPP BOX



OPTIONAL UPS / VOLTAGE REGULATOR



OPTIONAL GSM



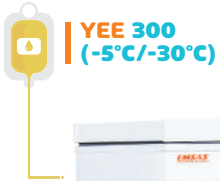
OPTIONAL WIFI

## ULT Serie

(-50/-86)

- 5.5-inch color touchscreen display with microprocessor control and password protection,
- Temperature setting range from -50°C to -86°C
- On-screen temperature/time graph display for the last 140 minutes
- Built-in rechargeable accumulator system supports the digital control panel and printer for up to 72 hours during power outages
- Visual and audible alarm system is activated when temperature limits are exceeded, the door is left open, or in case of power failure
- Inner chamber made of CR-NI 304 stainless steel
- Measurement accuracy of  $\pm 0.1^{\circ}\text{C}$
- Designed with cascade static direct cooling system - cooling pipes are placed outside the cabinet
- Automatic defrost system
- Ability to store temperature data for up to 10 years via USB, and export in Excel format to a PC
- Remote alarm output port
- External sensor input port
- Equipped with PT100 temperature sensor
- Dual sealing gaskets to ensure airtight performance
- Pressure equalization valve
- Equipped with 2 braked and 2 swivel caster wheels for easy mobility
- Compatible with CO<sub>2</sub> (Carbon Dioxide) Back-Up System
- Optional ambient temperature display
- 1-year warranty
- Certified with ISO 9001:2015, ISO 13485, CE, and ISO 14001

MODEL	ULT 200 / 240 L	ULT 470 / 470 L	ULT 730 / 730 L	ULT 800 / 800 L	YULT 350 / 350 L
Temperature Range of	-50°C / -86°C	-50°C / -86°C	-50°C / -86°C	-50°C / -86°C	-50°C / -86°C
Set Temperature	-80°C	-80°C	-80°C	-80°C	-80°C
External Dimensions (WxLxH) mm	836*812*1546	975*920*1851	985*1151*1933	1047*1153*1933	1800*800*840
Polyurathane Thickness	120 mm	120 mm	120 mm	120 mm	120 mm
Capacity / LT	240 L	470 L	730 L	800 L	350 L
Gross KG	172 Kg	240 Kg	286 Kg	310 Kg	120 Kg
Internal Lighting	-	-	-	-	-
Door Lock	+	+	+	+	+
Alarm	+	+	+	+	+
Internal Surface Material	Stainless Steel CR-NI 304	Stainless Steel CR-NI 304	Stainless Steel CR-NI 304	Stainless Steel CR-NI 304	Stainless Steel CR-NI 304
External Surface Material	Galvanized Steel with Electrostatic Powder Coated	Galvanized Steel with Electrostatic Powder Coated	Galvanized Steel with Electrostatic Powder Coated	Galvanized Steel with Electrostatic Powder Coated	Galvanized Steel with Electrostatic Powder Coated
Heating / Cooling System	Cascade	Cascade	Cascade	Cascade	Cascade
Insulation	CFC-Free Polyurathane	CFC-Free Polyurathane	CFC-Free Polyurathane	CFC-Free Polyurathane	CFC-Free Polyurathane
Number of Chrome Shelves	3	4	4	4	2 pcs plastic coated baskets
Screen	5'5 inch Touch Screen Display	5'5 inch Touch Screen Display	5'5 inch Touch Screen Display	5'5 inch Touch Screen Display	5'5 inch Touch Screen Display
Graphic Display	+	+	+	+	+
PC Connection	USB	USB	USB	USB	USB
Wheels	2 Braked , 2 Caster	2 Braked , 2 Caster	2 Braked , 2 Caster	2 Braked , 2 Caster	2 Braked , 2 Caster
Temperature Sensor	PT100	PT100	PT100	PT100	PT100
Control System	Microprocessor Controlled	Microprocessor Controlled	Microprocessor Controlled	Microprocessor Controlled	Microprocessor Controlled
Voltage / Hz	220V-50Hz / 110V-60HZ	220V-50Hz / 110V-60HZ	220V-50Hz / 110V-60HZ	220V-50Hz / 110V-60HZ	220V-50Hz / 110V-60HZ
Cooling Gas	R404a-R508B / R290-R170	R404a-R508B / R290-R170	R404a-R508B / R290-R170	R404a-R508B / R290-R170	R404a-R508B / R290-R170
Natural Gas	Optional	Optional	Optional	Optional	Optional





## EE Serie

(-5°C/-30°C)

- Temperature range from -5°C to -30°C, operating with a  $\pm 0.5^\circ\text{C}$  tolerance
- Stainless steel shelves that provide air circulation, each covered with individually insulated lids
- Plastic-coated wire shelves, adjustable according to user preference
- External sensor input port
- Remote alarm output port
- Multi-air flow system ensures even temperature distribution across all shelves
- Fin-type evaporator cooling system with fully automatic defrost function
- User-friendly microprocessor-controlled digital control panel
- Data storage capacity of 30 days, with password-protected access
- USB data logging: Records cabinet temperature for up to 10 years to an external USB flash drive and exports in Excel format to a PC
- Built-in rechargeable battery system powers the digital control panel and printer for up to 48 hours during power outages
- Visual and audible alarm system activates when temperature limits are exceeded, the door is left open, or in the event of a power failure
- Equipped with 2 lockable and 2 swivel caster wheels for easy mobility
- 2-year warranty
- Certified with ISO 9001:2015, ISO 13485, CE, and ISO 14001

MODEL	YEE 300	EE 100	EE 150	EE 300	EE 600
Temperature Range of	-5°C / -30°C	-5°C / -30°C	-5°C / -30°C	-5°C / -30°C	-5°C / -30°C
Set Temperature	-30°C	-30°C	-30°C	-30°C	-30°C
External Dimensions (WxLxH) mm	1300*800*840	600*660*150	600*670*1650	765*852*1950	910*830*1938
Polyurethane Thickness	100 mm	61 mm	75 mm	97,5 mm	78,5 mm
Capacity / LT	275 L	110	180 L	350 L	600 L
Gross KG	150 Kg	100 Kg	125 Kg	200 Kg	260 Kg
Internal Lighting	-	-	-	-	-
Door Lock	+	+	+	+	+
Alarm	+	+	+	+	+
Internal Surface Material	Stainless Steel CR-NI 304	Stainless Steel CR-NI 304	Stainless Steel CR-NI 304	Stainless Steel CR-NI 304	Stainless Steel CR-NI 304
External Surface Material	Galvanized Steel with Electrostatic Powder Coated	Galvanized Steel with Electrostatic Powder Coated	Galvanized Steel with Electrostatic Powder Coated	Galvanized Steel with Electrostatic Powder Coated	Galvanized Steel with Electrostatic Powder Coated
Heating/Cooling System	Fan-forced	Fan-forced	Fan-forced	Fan-forced	Fan-forced
Insulation	CFC-Free Polyurethane	CFC-Free Polyurethane	CFC-Free Polyurethane	CFC-Free Polyurethane	CFC-Free Polyurethane
Number of Shelves (Cr-Ni)	2 pcs plastic coated basket	2	3	4	4
5'5 inch Touch Screen Display	Optional	Optional	Optional	Optional	Optional
PC Connection	USB	USB	USB	USB	USB
Castors	2 Braked , 2 Regular	2 Braked , 2 Regular	2 Braked , 2 Regular	2 Braked , 2 Regular	2 Braked , 2 Regular
Temperature Sensor	NTC	NTC	NTC	NTC	NTC
Control System	Microprocessor Controlled	Microprocessor Controlled	Microprocessor Controlled	Microprocessor Controlled	Microprocessor Controlled
Voltage / Hz	220V-50Hz / 110V-60HZ	220V-50Hz / 110V-60HZ	220V-50Hz / 110V-60HZ	220V-50Hz / 110V-60HZ	220V-50Hz / 110V-60HZ
Cooling Gas	R404a/R290	R404a/R290	R404a/R290	R404a/R290	R404a/R290
Thermal Printer / Graphical Chart Recorder	Optional	Optional	Optional	Optional	Optional

**EF 100**  
(-20°C/-40°C)



**EF 150**  
(-20°C/-40°C)



**EF 300**  
(-20°C/-40°C)



**EF 600**  
(-20°C/-40°C)



**YEF 300**  
(-20°C/-40°C)



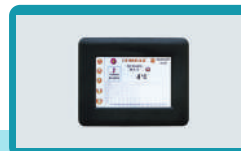
Receiving Reports  
via USB Memory



Optional Thermal Printer



Optional Circular Printer



Optional Touch Screen

## EF Serie

(-20°C/-40°C)

- Temperature range between -20°C and -40°C, operating with  $\pm 0.5^\circ\text{C}$  tolerance
- Stainless steel shelves that provide air circulation, each covered with individually insulated lids
- Inner chamber made of CR-NI 304 stainless steel
- External sensor input port
- Remote alarm output port
- Multi-air flow system ensures uniform temperature distribution across all shelves
- Automatic defrost system
- User-friendly microprocessor-controlled digital control panel
- 30-day data storage capacity
- Password-protected access
- USB data logging system: Stores cabinet temperature for up to 10 years on an external flash drive, with Excel export capability to PC
- Built-in rechargeable accumulator system supports the digital control panel and printer for up to 48 hours during power outages
- Visual and audible alarm system activates when: Upper or lower temperature limits are exceeded, Door is left open, power failure occurs
- Heated sealing surface, magnetic gasket for air-tight closure, and high-density polyurethane foam-filled door for superior insulation
- Equipped with 2 lockable and 2 swivel caster wheels for easy mobility
- 2-year warranty
- Certified with ISO 9001:2015, ISO 13485, TSE, CE, and ISO 14001

MODEL	YEF 300	EF 100	EF 150	EF 300	EF 600
Temperature Range of	-20°C / -40°C	-20°C / -40°C	-20°C / -40°C	-20°C / -40°C	-20°C / -40°C
Set Temperature	-40°C	-40°C	-40°C	-40°C	-40°C
External Dimensions (WxLxH) mm	1300*755*828	600*660*1050	600*670*1650	765*830*1950	910*842*1938
Polyurathane Thickness	100 mm	61 mm	75 mm	97,5 mm	78,5 mm
Capacity / LT	275L	110L	180L	350L	600L
Gross KG	150 Kg	100 Kg	125 Kg	200 Kg	260 Kg
Internal Lighting	-	-	-	-	-
Door Lock	+	+	+	+	+
Alarm	+	+	+	+	+
Internal Surface Material	Stainless Steel CR-NI 304	Stainless Steel CR-NI 304	Stainless Steel CR-NI 304	Stainless Steel CR-NI 304	Stainless Steel CR-NI 304
External Surface Material	Galvanized Steel with Electrostatic Powder Coated	Galvanized Steel with Electrostatic Powder Coated	Galvanized Steel with Electrostatic Powder Coated	Galvanized Steel with Electrostatic Powder Coated	Galvanized Steel with Electrostatic Powder Coated
Heating/Cooling System	Fan-forced	Fan-forced	Fan-forced	Fan-forced	Fan-forced
Insulation	CFC-Free Polyurathane	CFC-Free Polyurathane	CFC-Free Polyurathane	CFC-Free Polyurathane	CFC-Free Polyurathane
Number of Shelves (Cr-Ni)	2 pcs plastic coated baskets	2	3	4	4
5'5 inch Touch Screen Display	Optional	Optional	Optional	Optional	Optional
PC Connection	USB	USB	USB	USB	USB
Castors	2 Braked , 2 Regular	2 Braked , 2 Regular	2 Braked , 2 Regular	2 Braked , 2 Regular	2 Braked , 2 Regular
Temperature Sensor	NTC	NTC	NTC	NTC	NTC
Control System	Microprocessor Controlled	Microprocessor Controlled	Microprocessor Controlled	Microprocessor Controlled	Microprocessor Controlled
Voltage / Hz	220V-50Hz / 110V-60HZ	220V-50Hz / 110V-60HZ	220V-50Hz / 110V-60HZ	220V-50Hz / 110V-60HZ	220V-50Hz / 110V-60HZ
Cooling Gas	R404a/R290	R404a/R290	R404a/R290	R404a/R290	R404a/R290
Thermal Printer / Graphical Chart Recorder	Optional	Optional	Optional	Optional	Optional

## EPS (+20°C/+45°C)



- Plasma thawing is performed using a water-based system
- Thawing occurs with natural circulation and vibration within the water bath
- 20-liter capacity
- Temperature is adjustable by the user with a microprocessor-controlled system
- Operating temperature range: +5°C to +45°C
- User-adjustable upper and lower temperature alarm limits
- Equipped with a stainless steel basket system for holding blood bags
- Operates on 220V, 50Hz or 110V , 60Hz
- The heating element is placed in a separate compartment, preventing direct contact with water or products
- 300 W heating power allows for rapid temperature rise to the desired level
- The circulation system shortens the thawing time of the plasma products
- Includes a drain valve for quick and easy emptying of the water bath
- Integrated PID-controlled heating system ensures precise temperature maintenance and minimized energy consumption
- Features delayed start and timer functions, allowing the device to automatically shut off after the program is completed
- 2-year warranty

MODEL	EPS 10
Temperature Range of	+5 / +99°C
Set Temperature	+37°C
Capacity / Bags	4 pcs Bags
External Dimensions (WxLxH) mm	362*333*410
Capacity / LT	20 L
Rockwool Thickness	17,5 mm
Packing Dimensions	540x440x540 mm
Gross KG	21
Internal Surface Material	Stainless Steel CR-NI 304
External Surface Material	Galvanized Steel with Electrostatic Powder Coated
Heating / Cooling System	Electric
Insulation	Rockwool
Castors	Ball Joint Foot
Temperature Sensor	NTC
Control System	Microprocessor Controlled
Voltage / Hz	220V-50Hz / 110V-60Hz
Water Circulation	+
Drainage System	+
Bags Chamber	Stainless Steel Basket





**EPT**  
 (+20°C/+45°C)

**EPT 6**  
 (+20°C/+45°C)

MODEL	EPT 6
Temperature Range of	+5 / +45°C
Set Temperature	+37°C
Capacity / Bags	6
External Dimensions (WxLxH) mm	362*333*410
Capacity / LT	20 L
Rockwool Thickness	17,5 mm
Packing Dimensions	540x440x540 mm
Gross KG	30
Internal Surface Material	Stainless Steel CR-NI 304
External Surface Material	Galvanized Steel with Electrostatic Powder Coated
Heating / Cooling System	Electric
Insulation	Rockwool
Castors	Ball Joint Foot
Temperature Sensor	NTC
Control System	Microprocessor Controlled
Voltage / Hz	220V-50Hz / 110V-60Hz
Vibration	+
Drainage System	+
Bags Chamber	Silicone Pockets

- The plasma thawing process is performed using a dry-wet system
- Plasma bags do not come into direct contact with water – they are placed in silicone pockets that completely isolate them from water
- Easy loading and unloading of plasma bags via an automated lid mechanism controlled by up/down buttons
- Vibration is generated through the automatic up-and-down movement of the lid, combined with water circulation
- User-adjustable temperature control via microprocessor-based system
- Operating temperature range: +5°C to +45°C
- User-defined upper and lower alarm temperature limits
- Operates on 220V, 50Hz or 110V , 60Hz
- The heating element is housed in a separate compartment, completely isolated from water and products
- 300 W heating power ensures rapid temperature rise to the desired set point
- Circulation system shortens plasma thawing time, enhancing process efficiency
- Includes a drain valve for quick emptying of the water reservoir
- PID-controlled heating system allows for stable temperature control and optimized energy consumption
- Equipped with delayed start and timer functions, enabling the device to automatically shut off after program completion
- 2-year warranty

**EKT 80**  
(2°C/8°C)



**EKT 150**  
(2°C/8°C)



**EKT 175**  
(2°C/8°C)



**EKT 250**  
(2°C/8°C)



**EKT 425**  
(2°C/8°C)



**EKT 725**  
(2°C/8°C)

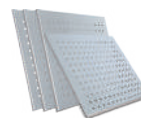


**EKT 800**  
(2°C/8°C)



Receiving Reports  
via USB Memory

**EKT 1450**  
(2°C/8°C)



OPTIONAL CHROME SHELF



OPTIONAL VACCINE TRACKING SYSTEM



Optional Thermal Printer



Optional Circular Printer



Optional Touch Screen



OPTIONAL BLOCK  
DOOR

## EKT Serie

(2°C/8°C)

- Temperature range: +2°C to +8°C (factory set to +4°C)
- User-friendly microprocessor-controlled digital panel, stores data for up to 30 days and password-protected access
- USB port for data logging: Stores temperature data for up to 10 years on an external flash drive, data can be transferred to PC in Excel format
- 0.1°C measurement precision
- Inner chamber made of Cr-Ni 304 stainless steel
- Double-layered thermal glass doors, lockable and sealed with magnetic gaskets
- Plastic-coated wire shelves, adjustable based on user preference
- Multi Air Flow System ensures uniform temperature distribution across all shelves
- Fin-type evaporator cooling system with fully automatic defrost
- Built-in rechargeable accumulator system supports the digital control panel and printer for up to 48 hours during power outages
- Visual and audible alarm system is triggered when: Temperature limits are exceeded, Door is left open, power outage occurs
- External sensor input port
- Remote alarm output port
- Equipped with 2 lockable and 2 swivel caster wheels for easy mobility
- Silent and vibration-free operation
- Integrated LED lighting system
- 2-year warranty
- Optional vaccine tracking system
- Certified with ISO 9001:2015, ISO 13485, TSE, CE, and ISO 14001

MODEL	EKT 80 / 70 L	EKT 150 / 150 L	EKT 175 / 200 L	EKT 250 / 280 L	EKT 425 / 380 L	EKT 725 / 630 L	EKT 1450 / 1320 L
Temperature Range of	0 / +15 °C	0 / +15 °C	0 / +15 °C	0 / +15 °C	0 / +15 °C	0 / +15 °C	0 / +15 °C
Set Temperature	+4°C	+4°C	+4°C	+4°C	+4°C	+4°C	+4°C
External Dimensions (WxLxH) mm	450*600*750	600*676*1161	600*671*1361	600*690*1720	600*680*2040	765*850*2020	1450*840*2030
Capacity / LT	70 L	150L	200	280	380	637 L	1320
Polyurethane Thickness	41 mm	50 mm	42,5 mm	42,5 mm	42,5 mm	51,5	40 mm
Gross KG	65 Kg	97 Kg	115 Kg	128 Kg	175 Kg	229 Kg	380 Kg
Internal Lighting	+	+	+	+	+	+	+
Door Lock	+	+	+	+	+	+	+
Alarm	+	+	+	+	+	+	+
Internal Surface Material	Stainless Steel CR-NI 304	Stainless Steel CR-NI 304	Stainless Steel CR-NI 304	Stainless Steel CR-NI 304	Stainless Steel CR-NI 304	Stainless Steel CR-NI 304	Stainless Steel CR-NI 304
External Surface Material	Galvanized Steel with Electrostatic Powder Coated	Galvanized Steel with Electrostatic Powder Coated	Galvanized Steel with Electrostatic Powder Coated	Galvanized Steel with Electrostatic Powder Coated	Galvanized Steel with Electrostatic Powder Coated	Galvanized Steel with Electrostatic Powder Coated	Galvanized Steel with Electrostatic Powder Coated
Heating/Cooling System	Fan-forced	Fan-forced	Fan-forced	Fan-forced	Fan-forced	Fan-forced	Fan-forced
Insulation	CFC-Free Polyurethane	CFC-Free Polyurethane	CFC-Free Polyurethane	CFC-Free Polyurethane	CFC-Free Polyurethane	CFC-Free Polyurethane	CFC-Free Polyurethane
Number of Shelves	2	2	3	4	5	5	12
PC Connection	USB	USB	USB	USB	USB	USB	USB
Castors	2 Braked , 2 Regular	2 Braked , 2 Regular	2 Braked , 2 Regular	2 Braked , 2 Regular	2 Braked , 2 Regular	2 Braked , 2 Regular	2 Braked , 2 Regular
Temperature Sensor	NTC	NTC	NTC	NTC	NTC	NTC	NTC
Control System	Microprocessor Controlled	Microprocessor Controlled	Microprocessor Controlled	Microprocessor Controlled	Microprocessor Controlled	Microprocessor Controlled	Microprocessor Controlled
Voltage / Hz	220v-50hz/110V-60HZ	220v-50hz/110V-60HZ	220v-50hz/110V-60HZ	220v-50hz/110V-60HZ	220v-50hz/110V-60HZ	220v-50hz/110V-60HZ	220v-50hz/110V-60HZ
Cooling Gas	R600/R290/R134a	R600/R290/R134a	R600/R290/R134a	R600/R290/R134a	R600/R290/R134a	R600/R290/R134a	R600/R290/R134a
Thermal Printer	Optional	Optional	Optional	Optional	Optional	Optional	Optional
Graphical Chart Recorder	Optional	Optional	Optional	Optional	Optional	Optional	Optional
5'5 inch Touc Screen Display	Optional	Optional	Optional	Optional	Optional	Optional	Optional
Sms ve E-posta Modülü	Optional	Optional	Optional	Optional	Optional	Optional	Optional

**EKT-D 175**  
(2°C/8°C) (-5°C/-30°C)



**EKT-D 425**  
(2°C/8°C) (-5°C/-30°C)



**EKT-D 500**  
(2°C/8°C) (-5°C/-30°C)



Optional Thermal Printer



Optional Touch Screen



# EKT-D Serie

(2°C/8°C)  
(-5°C/-30°C)

- Refrigerator compartment operates between 0°C and +15°C , set to +4°C
- Freezer compartment operates between -5°C and -30°C, set to -20°C
- Multi Air Flow System ensures uniform temperature distribution across all shelves
- Equipped with two compressors; both compartments are displayed independently on the digital control panel
- Fin-type evaporator cooling system with fully automatic defrost function
- User-friendly microprocessor-controlled digital control panel, stores data for 30 days and password-protected access
- USB port for exporting up to 10 years of temperature data to an external flash drive in Excel format
- High-precision temperature measurement with 0.1°C accuracy
- Inner chamber made of Cr-Ni 304 stainless steel
- Built-in rechargeable accumulator system supports the digital control panel and printer for up to 48 hours during power outages
- Visual and audible alarm system activated in case of: Temperature deviations , Door left open , Power outage
- External sensor input port
- Remote alarm output port
- Double-layered thermal glass doors, lockable and equipped with magnetic gaskets
- Adjustable plastic-coated wire shelves per user preference
- Equipped with 2 lockable and 2 swivel caster wheels for easy mobility
- Integrated LED lighting
- 2-year warranty
- Optional vaccine monitoring system
- Certified to ISO 9001:2015, ISO 13485, TSE, CE, ISO 14001 standards

MODEL	EKT-D 175		EKT-D 425		EKT-D 500	
	Refrigerator Section	Freezer Section	Refrigerator Section	Freezer Section	Refrigerator Section	Freezer Section
Temperature Range of	0 / +15 °C	-10°C / -30°C	0 / +15 °C	-10°C / -30°C	0 / +15 °C	-10°C / -30°C
Set Temperature	+4°C	-20°C	+4°C	-20°C	+4°C	-20°C
External Dimensions (WxLxH) mm	600*671*1530		600*660*2040		765*825*2030	
Polyurathane Thickness	42,5 mm	60 mm	42,5 mm	60 mm	49 mm	67 mm
Capacity / LT	148 L	67 L	230 L	70 L	355 L	140 L
Gross KG	130 Kg		175 Kg		197 Kg	
Internal Lighting	+	-	+	-	+	-
Door Lock	+	+	+	+	+	+
Alarm	+		+		+	
Internal Surface Material	Stainless Steel CR-NI 304		Stainless Steel CR-NI 304		Stainless Steel CR-NI 304	
External Surface Material	Galvanized Steel with Electrostatic Powder Coated		Galvanized Steel with Electrostatic Powder Coated		Galvanized Steel with Electrostatic Powder Coated	
Heating/Cooling System	Fan-Forced		Fan-Forced		Fan-Forced	
Insulation	CFC-Free Polyurathane		CFC-Free Polyurathane		CFC-Free Polyurathane	
Number of Drawer (Cr-Ni)	3 pcs	1 pcs	3 pcs	1 pcs	3 pcs	1 pcs
PC Coonection	USB		USB		USB	
Castors	2 Braked , 2 Regular , 2 Ball Joint Feet		2 Braked , 2 Regular , 2 Ball Joint Feet		2 Braked , 2 Regular , 2 Ball Joint Feet	
Temperature Sensor	NTC		NTC		NTC	
Control System	Microprocessor Controlled		Microprocessor Controlled		Microprocessor Controlled	
Voltage / Hz	220v-50hz / 110v-60hz		220v-50hz / 110v-60hz		220v-50hz / 110v-60hz	
Cooling Gas	R134a/R290	R404a/R290	R134a/R290	R404a/R290	R134a/R290	R404a/R290
Door Type: Glass/Solid	Optional		Optional		Optional	
Thermal Printer	Optional		Optional		Optional	
5'5 inch Touch Screen Display	Optional		Optional		Optional	

## EK 380

- Power Supply: Operates with 195–230 V / 50 Hz or 110V / 60Hz mains voltage.
- Temperature Range: Adjustable between +0°C and +15°C, factory-set to +4°C.
- Door: Made of double-layered thermal glass, lockable, and features magnetic seals for secure closure.
- Shelving: Includes plastic-coated wire shelves, adjustable based on user requirements.
- Air Circulation: Equipped with a reinforced fan system to ensure even temperature distribution throughout the cabinet.
- Operation: Designed for quiet and vibration-free performance.
- Defrosting: Features a fully automatic defrost system to maintain evaporator efficiency.
- Interior Lighting: Integrated LED lighting inside the cabinet for better visibility.
- Control System: Uses a user-friendly microprocessor-based digital control panel.
- There is a USB to transfer the temperature information to PC. In this way, the 10 year old temperature record.
- Alarm System: When temperature limits are exceeded, the device emits audible and visual alerts.
- Eco-Friendly Design: The cooling and insulation systems are free from ozone-depleting CFC gases.
- 2-year warranty.
- Certified with ISO 9001:2015, ISO 13485, CE, ISO 14001



## EKL 380

- Power Supply: Operates with 195–230 V / 50 Hz or 110V / 60Hz mains voltage.
- Temperature Range: Adjustable between +0°C and +15°C, factory-set to +4°C.
- Door: Made of double-layered thermal glass, lockable, and features magnetic seals for secure closure.
- Shelving: Includes plastic-coated wire shelves, adjustable based on user requirements.
- Air Circulation: Equipped with a reinforced fan system to ensure even temperature distribution throughout the cabinet.
- Operation: Designed for quiet and vibration-free performance.
- Defrosting: Features a fully automatic defrost system to maintain evaporator efficiency.
- Interior Lighting: Integrated LED lighting inside the cabinet for better visibility.
- Control System: Uses a user-friendly microprocessor-based digital control panel.
- There is a USB to transfer the temperature information to PC. In this way, the 10 year old temperature record.
- Alarm System: When temperature limits are exceeded, the device emits audible and visual alerts.
- Eco-Friendly Design: The cooling and insulation systems are free from ozone-depleting CFC gases.
- 2-year warranty.
- Certified with ISO 9001:2015, ISO 13485, CE, ISO 14001



## DT 12-24 V MOBILE REFRIGERATOR FOR CAR AND PORTABLE COOLER



- It is designed to operate in vehicles with 12/24 Volt systems.
- The device operates within a range of +2/+15°C and is set to 4°C.
- The refrigerant used in the device is R290.
- The interior and exterior of the device are made of stainless steel (Cr-Ni material).
- The external dimensions of the device are 410x800x600 mm.
- The internal volume of the device is 80 L

## EMG POWER UNIT



- The power unit is available in 1kW, 2kW, and 3kW capacity options.
- Operates with 12V/24V DC or 220V AC input.
- Inverter system allows the user to prioritize and select the preferred power source.
- Operating temperature range: -15°C to +55°C
- Integrated temperature sensors and cooling system protect the unit from overheating.
- Functions as a UPS (Uninterruptible Power Supply) to stabilize voltage during power fluctuations or outages.
- Designed to operate connected devices for up to 8 hours during power failures (extendable upon request).
- Compatible with solar panels for alternative energy input.
- All connection cables are equipped with plugs and sockets for easy installation.
- Power unit capacity should be selected based on the energy requirements of the connected device(s).
- Solar panels are mounted on a foldable and lockable frame, making them easy to stabilize and deploy.

# NEWBORN HOSPITAL PRODUCT GROUPS



**BREAST MILK FRIDGE AND FREEZER /  
COMBINED REFRIGATOR**



**BABY BOTTLE WARMER  
AND INJECTOR HEATER**





**ANS-F 150**  
(-25°C)



**ANS-E 175**  
(0°/+15°C)



**ANS-D 425**  
(2°C/8°C) / (-5/-25)



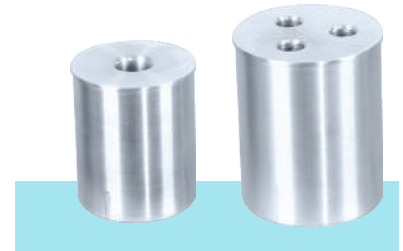
## EBI Serie 6-9-12-24 Pcs



**EBI 6**



**EBI 12**



## BREAST MILK FRIDGE AND FREEZER / COMBINED REFRIGATOR

- As EMSAŞ A.Ş., we manufacture breast milk devices specifically designed for use in neonatal intensive care units, milk banks, and maternity departments. These units preserve and freeze breast milk without compromising its nutritional value.
- Each drawer of the device is made of stainless steel material and contains 20 eyes separated by letter and number systems for prevent baby bottles fall and easily trace the stocks.
- Temperature ranges: 0°C to +15°C and -5°C to -30°C
- User-friendly microprocessor-controlled digital panel with 30-day data storage and password protection
- USB output allows external storage of temperature data for up to 10 years, exportable to Excel format
- High-precision temperature measurement with 0.1°C accuracy
- Interior chamber made of Cr-Ni 304 stainless steel
- Double-glazed, lockable doors with magnetic gaskets for thermal insulation
- Adjustable plastic-coated wire shelves, customizable to user needs
- Multi air-flow system ensures uniform temperature distribution across all shelves
- Fin evaporator cooling system with fully automatic defrost
- Built-in rechargeable accumulator system supports the digital control panel and printer for up to 48 hours during power outages
- Visual and audible alarm system for temperature deviations, open door, or power failure
- External sensor input port and remote alarm output port
- Equipped with 2 lockable and 2 swivel caster wheels for easy mobility
- Silent and vibration-free operation
- Integrated LED lighting system
- 2-year warranty
- Optional vaccine monitoring system
- Certified with ISO 9001:2015, ISO 13485, CE, ISO 14001

MODEL	ANS-F 150	ANS-E 175	ANS-D 425	
			Üst Bölme	Alt Bölme
Temperature Range of	-5 / -30°C	0 / +15°C	0 / +15°C	-5 / -30°C
Set Temperature	-20°C	+4°C	+4°C	-20°C
External Dimensions (WxLxH) mm	600*670*1650	600*660*1446	600*660*2040	
Capacity / LT	210 L	225 L	166 L	138 L
Polyurethane Thickness	75 mm	42,5 mm	42 mm	60 mm
Gross KG	125 KG	105 Kg	190 Kg	
Internal Lighting	-	-	+	-
Door Lock	+	+	+	-
Alarm	+	+	+	
Internal Surface Material	Stainless Steel CR-Ni 304	Stainless Steel CR-Ni 304	Paslanmaz Çelik CR-Ni 304	
External Surface Material	Galvanized Steel with Electrostatic Powder Coated / Optional / Stainless Steel CR-Ni 304	Galvanized Steel with Electrostatic Powder Coated / Optional / Stainless Steel CR-Ni 304	Galvanized Steel with Electrostatic Powder Coated / Optional / Stainless Steel CR-Ni 304	
Heating / Cooling System	Direct Air Cooling	Direct Air Cooling	Direct Air Cooling	
Insulation	CFC-Free Polyurethane	CFC-Free Polyurethane	CFC-Free Polyurethane	
Number of Drawers	4 pcs	3 pcs	3 pcs	3 pcs
Baby Bottle Capacity (per each Drawer)	20 pcs	20 pcs	20 pcs	20 pcs
Total Baby Bottle Capacity	80 pcs	80 pcs	80 pcs	80 pcs
Thermal Printer	Optional	Optional	Optional	
PC Connections	USB	USB	USB	
Castors	2 Braked , 2 Regular	2 Braked , 2 Regular	2 Braked , 2 Regular	
Temperature Sensor	NTC	NTC	NTC	
Control System	Microprocessor Controlled	Microprocessor Controlled	Microprocessor Controlled	
Voltage / Hz	220V-50Hz / 110V-60Hz	220V-50Hz / 110V-60Hz	220V-50Hz / 110V-60Hz	
Cooling Gas	R404a/R290	R404a/R290	R134a/R290	R404a/R290
Graphical Chart Recorder	Optional	Optional	Optional	
5'5 inch Touch Screen Display	Optional	Optional	Optional	

## BABY BOTTLE WARMER AND INJECTOR HEATER

MODEL	EBI 6	EBI 9	EBI 12	EBI 24
Temperature Range of	+20°C / +55°C	+20°C / +55°C	+20°C / +55°C	+20°C / +55°C
Set Temperature	+37°C	+37°C	+37°C	+37°C
Baby Bottle Capacity	6 pcs (50ml-120ml)	9 pcs (50ml-120ml)	12 pcs (50ml-120ml)	24 pcs (50ml-120ml)
External Dimensions (WxLxH) mm	350*330*200	450*330*200	650*330*200	679*660*200
Isolation Thickness	55 mm	55 mm	55 mm	55 mm
Heater System	Resistance	Resistance	Resistance	Resistance
Internal Surface Material	Aluminum	Aluminum	Aluminum	Aluminum
External Surface Material	Galvanized Steel with Electrostatic Powder Coated	Galvanized Steel with Electrostatic Powder Coated	Galvanized Steel with Electrostatic Powder Coated	Galvanized Steel with Electrostatic Powder Coated
Insulation	Rockwool	Rockwool	Rockwool	Rockwool
Control System	PID	PID	PID	PID
Safety Thermostat	(Until to +90°C)	(Until to +90°C)	(Until to +90°C)	(Until to +90°C)
Voltage / Hz	220V-50Hz / 110V-60HZ	220V-50Hz / 110V-60HZ	220V-50Hz / 110V-60HZ	220V-50Hz / 110V-60HZ
TIMER	+	+	+	+
Accessories (Syringe Block)	Optional	Optional	Optional	Optional
Power	1200 Watt	1200 Watt	1200 Watt	1200 Watt

and an aluminum heating plate

- For safety, the unit includes an external mechanical safety thermostat to protect the heating elements from overheating
- Controlled by a microprocessor-based electronic board
- Optional temperature alarm system alerts the user when temperatures exceed pre-set upper or lower limits
- The built-in timer function enables the device to operate for a specified duration and then automatically shut off
- 2-year warranty
- Certified with ISO 9001:2015, ISO 13485, CE, ISO 14001

- EBI bottle warmers provide a dry and sterile environment for hygienically warming baby bottles.
- Available in capacities of 6, 8, 12, and 24 bottles, each holding 130 ml
- Equipped with PID control system, which intermittently supplies power to the heating element—ensuring energy efficiency and maintaining bottle temperatures at a stable set value
- Continuous operation mode allows the device to maintain a stable temperature for 24 hours
- Even heat distribution is achieved using silicone heating elements

**EMI 80**  
(+20°C/+80°C)



**EMI 100**  
(+20°C/+80°C)



**EMI 150**  
(+20°C/+80°C)



**EMI D-500**  
(+20°C/+80°C)



**EMIX 250**  
(+20°C/+80°C)



Receiving Reports  
via USB Memory

## EMI Serie

(+20°C/+80°C)

- Designed specifically for warming fluid and blankets.
- Temperature range of 20°C and 80°C, with a default setting of 50°C.
- User-friendly microprocessor-based digital control panel with 30 days of memory storage, featuring a password protection system for access.
- The device allows data to be saved to an external USB flash drive for up to 10 years and can transfer this data to a PC in Excel format.
- Automatically rechargeable accumulator system that powers the digital control panel and printer for 48 hours in case of power loss.
- Visual and audible alarm system activates when temperature limits are exceeded, the door is left open, or during power outages.
- Electronic over-temperature protection up to 80°C, with mechanical over-temperature protection reaching 90°C.
- Enhanced fan system ensures uniform heat distribution.
- To prevent external contamination, the air circulation system is equipped with a filter.
- LED lighting system inside the cabinet.
- Dual-cabinet design allows for independent temperature control for each compartment, with temperatures monitored via a digital display.
- External sensor adjustments can be made via the electronic board to synchronize with cabinet temperatures.
- Double-glazed, lockable, magnetic-sealed doors.
- 2-year warranty
- Certified with ISO 9001:2015, ISO 13485, CE, ISO 14001

MODEL	EMI 80	EMI 100	EMI 150	EMIX 250	EMI 350	EMI 500
Temperature Range of	+20°C / +80°C	+20°C / +80°C	+20°C / +80°C	+20°C / +80°C	+20°C / +80°C	+20°C / +80°C
Set Temperature	+50°C	+50°C	+50°C	+50°C	+50°C	+50°C
External Dimensions (WxLxH) mm	452*661*765	600*695*910	600*671*1361	662*620*712	600*660*2040	765*835*2020
Capacity / LT	70L	110L	225 L	250 L	380 L	"250 L x 2 (for 2 Compartment)"
Polyurathane Thickness	4 mm	52 mm	42,5 mm	42,5 mm	42,5 mm	50 Mm
Gross KG	55 Kg	85 Kg	90 Kg	95 Kg	100 Kg	130 Kg
Internal Lighting	+	+	+	+	+	+
Door Lock	+	+	+	+	+	+
Alarm	+	+	+	+	+	+
Internal Surface Material	Stainless Steel CR-NI 304	Stainless Steel CR-NI 304	Stainless Steel CR-NI 304	Stainless Steel CR-NI 304	Stainless Steel CR-NI 304	Stainless Steel CR-NI 304
External Surface Material	Galvanized Steel with Electrostatic Powder Coated	Galvanized Steel with Electrostatic Powder Coated	Galvanized Steel with Electrostatic Powder Coated	Chrome	Galvanized Steel with Electrostatic Powder Coated	Galvanized Steel with Electrostatic Powder Coated
Heating/Cooling System	Fan-forced	Fan-forced	Fan-forced	Fan-forced	Fan-forced	Fan-forced
Insulation	CFC-Free Polyurathane	CFC-Free Polyurathane	CFC-Free Polyurathane	CFC-Free Polyurathane	CFC-Free Polyurathane	CFC-Free Polyurathane
Number of Chrome Shelves	2	2	3	5	5	2/2
5'5 inch Touch Screen Display	Optional	Optional	Optional	Optional	Optional	Optional
PC Connection	USB	USB	USB	USB	USB	USB
Castors	2 Braked , 2 Regular	2 Braked , 2 Regular	2 Braked , 2 Regular	2 Braked , 2 Regular	2 Braked , 2 Regular	2 Braked , 2 Regular
Voltage / Hz	220V-50Hz / 110V-60HZ	220V-50Hz / 110V-60HZ	220V-50Hz / 110V-60HZ	220V-50Hz / 110V-60HZ	220V-50Hz / 110V-60HZ	220V-50Hz / 110V-60HZ





**EMSAS**<sup>®</sup>

SINCE 1975

## EKT-I Serie 22-24



Receiving Reports  
via USB Memory

## COOLED INCUBATOR

COOLED: -10°C / +80°C



## ETUVE

ETU : +5°C / +250°C



## ESB WATER BATH



## EKL

CLIMATIC TEST  
CHAMBER



## BOD INCUBATOR



**EKT-I 80**  
(22/24)



**EKT-I 150**  
(22/24)



**EKT-I 175**  
(22/24)



**EKT-I 250**  
(22/24)



**EKT-I 425**  
(22/24)



**EKT-I 725**  
(22/24)



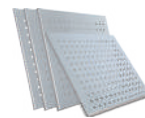
**EKT-I 1450**  
(22/24)



Receiving Reports  
via USB Memory



OPTIONAL VACCINE TRACKING SYSTEM



OPTIONAL CHROME SHELF



Optional Thermal Printer



Optional Circular Printer



Optional Touch Screen



OPTIONAL BLOCK  
DOOR

## EKT-I Serie

(22/24)

- Temperature range: +15°C to +25°C, set to +22°C.
- User-friendly microprocessor-controlled digital panel with password protection and 30-day data storage capacity.
- USB port for exporting up to 10 years of temperature data to an external flash drive in Excel format.
- Measurement accuracy of 0.1°C
- Interior chamber made of Cr-Ni 304 stainless steel
- Double-glazed insulated doors with magnetic seals and locking mechanism.
- Height-adjustable wire shelves with plastic coating, customizable to user preferences.
- Multi air-flow system ensures even temperature distribution across all shelves.
- Fin evaporator cooling system with fully automatic defrost function.
- Built-in rechargeable accumulator system supports the digital control panel and printer for up to 48 hours during power outages
- Visual and audible alarm system in case of temperature deviations, open door, or power failure.
- External sensor input port
- Remote alarm output
- Equipped with 2 lockable and 2 swivel caster wheels for easy mobility
- Silent and vibration-free operation
- LED interior lighting system
- 2-year warranty
- Optional vaccine monitoring system available
- Certified with ISO 9001:2015, ISO 13485, CE, and ISO 14001

MODEL	EKT-I 80	EKT-I 150	EKT-I 175	EKT-I 250	EKT-I 425	EKT-I 725	EKT-I 1450
Temperature Range of	+15C/+25C	+15C/+25C	+15C/+25C	+15C/+25C	+15C/+25C	+15C/+25C	+15C/+25C
Set Temperature	+22C	+22C	+22C	+22C	+22C	+22C	+22C
External Dimensions (WxLxH) mm	450*600*750 mm	600*680*1161 mm	600*680*1361 mm	600*680*1640 mm	600*680*2040 mm	765*835*2020 mm	1450*840*2030 mm
Capacity / LT	70 L	150L	200	270	380	630	1320
Polylurathane Foam Thickness	41 mm	41 mm	42,5 mm	42,5 mm	42,5 mm	51,5 mm	40 mm
Internal Lighting	+	+	+	+	+	+	+
Gross KG	60 KG	107 KG	105 KG	115 KG	156 KG	220 KG	320 KG
Alarm	+	+	+	+	+	+	+
Door Looc	+	+	+	+	+	+	+
External Surface Material	Galvanized Steel with Electrostatic Powder Coated	Galvanized Steel with Electrostatic Powder Coated	Galvanized Steel with Electrostatic Powder Coated	Galvanized Steel with Electrostatic Powder Coated	Galvanized Steel with Electrostatic Powder Coated	Galvanized Steel with Electrostatic Powder Coated	Galvanized Steel with Electrostatic Powder Coated
Internal Surface Material	Stainless Steel CR-Ni 304	Stainless Steel CR-Ni 304	Stainless Steel CR-Ni 304	Stainless Steel CR-Ni 304	Stainless Steel CR-Ni 304	Stainless Steel CR-Ni 304	Stainless Steel CR-Ni 304
Insulation	CFC-Free Polyurethane	CFC-Free Polyurethane	CFC-Free Polyurethane	CFC-Free Polyurethane	CFC-Free Polyurethane	CFC-Free Polyurethane	CFC-Free Polyurethane
Heating/Cooling System	Fan-forced	Fan-forced	Fan-forced	Fan-forced	Fan-forced	Fan-forced	Fan-forced
PC Connection	USB	USB	USB	USB	USB	USB	USB
Number of Shelves	2	2	3	4	5	5	12
Temperature Sensor	NTC	NTC	NTC	NTC	NTC	NTC	NTC
Castors	2 Braked , 2 Regular	2 Braked , 2 Regular	2 Braked , 2 Regular	2 Braked , 2 Regular	2 Braked , 2 Regular	2 Braked , 2 Regular	2 Braked , 2 Regular
Voltage / Hz	220V-50Hz / 110V-60Hz	220V-50Hz / 110V-60Hz	220V-50Hz / 110V-60Hz	220V-50Hz / 110V-60Hz	220V-50Hz / 110V-60Hz	220V-50Hz / 110V-60Hz	220V-50Hz / 110V-60Hz
Control System	Microprocessor Controlled	Microprocessor Controlled	Microprocessor Controlled	Microprocessor Controlled	Microprocessor Controlled	Microprocessor Controlled	Microprocessor Controlled
Chrome Shelf	Optional	Optional	Optional	Optional	Optional	Optional	Optional
Cooling Gas	R600/R290/R134a	R600/R290/R134a	R600/R290/R134a	R600/R290/R134a	R600/R290/R134a	R600/R290/R134a	R600/R290/R134a
Basket	Optional	Optional	Optional	Optional	Optional	Optional	Optional
Thermal Printer	Optional	Optional	Optional	Optional	Optional	Optional	Optional
5'5 inch Touch Screen Display	Optional	Optional	Optional	Optional	Optional	Optional	Optional
SMS and E-mail Module	Optional	Optional	Optional	Optional	Optional	Optional	Optional
Graphical Chart Recorder	Optional	Optional	Optional	Optional	Optional	Optional	Optional

## ETUVE / DRYING AND HEATING OVEN (+5 / 250)



- **External Surface:** The exterior is made of galvanized steel, coated with electrostatic paint for rust resistance. The interior is made of 304 CR-NI stainless steel.
- **Power Supply:** Operates with 195-230 V/50 Hz mains voltage.
- **Functionality:** The dry heat sterilizer is used for heating, drying, and sterilization processes.
- **Heat Distribution:** Ensures homogeneous heat distribution within the unit through a turbo fan motor.
- **Digital Control System:** The sterilizer can be operated for 1 minute to 99.9 hours.
- **Continuous Operation Mode:** The device allows for unlimited operation at a desired set point, without a time limit.
- **Ease of Cleaning:** The device features curved corners to minimize dirt accumulation, ensuring easy cleaning.
- **Safety Thermostat:** A safety thermostat can be adjusted between +50°C to +300°C, providing protection against overheating.
- **Operating Temperature Range:** The working temperature is 5°C above ambient temperature to 250°C.
- **Warranty:** The device is covered by a 2-year warranty.

MODEL	ET 150
Temperature Range	+5 / +250°C
Set Point	+250°C
External Dimensions (WxLxH) mm	650x750x950
Internal Dimensions (WxLxH) mm	476x455x565
Volume	148 L
Shelves	2 pcs Shelves
Rock Wool (mm)	60 mm
Packaged Dimensions (WxLxH) mm	650x750x950
Gross KG	70 Kg
Interior Lighting	-
Door Lock	+
Alarm	+
Internal Surface	Stainless Steel Cr-Ni 304
External Surface	Galvanized sheet with electrostatic paint
Heating / Cooling System	Electric Heated Air Circulation
Insulation	Rock Wool
Castor	Ball Joint
Temperature Sensor	J Type
Control System	Microprocessor Control
Power	1200 Watt
Voltage	220v-50hz

## ESB WATER BATH (-10/+80)



- The device is used to ensure that the chemicals used in laboratories are heated without fire.
- The device ensures that chemical solutions and samples are kept constant at desired temperatures at desired times.
- The device performs melting process with the watery system. Water is constantly circulated in the device. Therefore, homogeneous heat distribution is provided in the device.
- Glass wool is used on the upper part of the device as insulation material.
- Since there is no heater or pump in the chamber, there is no loss in net volume.
- The device provides precise temperature measurement thanks to its microprocessor control.
- Additional safety measures have been taken against overheating with the safety thermostat adjustable between 30 and 90 degrees in the device.
- There is a drainage system for the discharge of excess water in the device.
- The inner chamber is made of monoblock stainless steel with rounded corners to reduce the risk of contamination of the device.
- The outer surface is stainless steel made of electrostatic painted galvanized sheet.
- The device provides the user the opportunity of programming between 0 and 99.99 hours.
- The device provides wide usage opportunity with its delayed start and indefinite working mode.
- Emsaş A.Ş. All medical devices manufactured by us are guaranteed for 2 years.

MODEL	ESB 10
Temperature Range	+5 / +99°C
Set Point	+45°C
External Dimensions (WxLxH) mm	362x333x410
Internal Dimensions (WxLxH) mm	327x298x199
Volume	20 L
Rock Wool (mm)	17,5 mm
Packaged Dimensions (WxLxH) mm	520x420x530 mm
Gross KG	21 Kg
Interior Lighting	-
Alarm	-
Internal Surface	Stainless Steel Cr-Ni 304
External Surface	Galvanized sheet with electrostatic paint
Heating / Cooling System	Electricity
Insulation	Rock Wool
Castor	Ball Joint
Temperature Sensor	NTC
Control System	PID
Power	1137 Watt
Voltage	220v-50hz
Amper	5 Amper



## ESI 100

ESI Serie  
(-10/+80)

- Cooled incubator operates in the temperature range of -10°C to +80°C and is typically set at 37°C.
- The observation window inside the incubator allows for monitoring the internal environment without opening the door, preventing temperature loss.
- Equipped with two adjustable-height 304 CR-Ni stainless steel racks, designed to be perforated to allow air circulation and avoid obstruction.
- User-friendly microprocessor-based digital control panel with the ability to store data for up to 30 days and includes a password protection system for access.
- The thermostat on the control panel can measure temperature with a precision of 0.1°C.
- Visual and audible alarm system is triggered if the temperature limits are exceeded, the door is left open, or during a power outage.
- The incubator's exterior is made from galvanized sheet metal coated with electrostatic paint, offering corrosion resistance, while the interior is made from stainless steel.
- The unit operates on 195-230V/50Hz or 110V / 60Hz mains voltage.
- The incubator features a polyurethane block door for insulation.
- It includes two stoppered and two free-moving wheels for easy mobility.
- LED lighting system inside the incubator.
- 2-year warranty.
- Certified with ISO 9001:2015, ISO 13485, CE, ISO 14001



Optional Thermal Printer

MODEL	ESI
Temperature Range of	-10°C / +80°C
Set Temperature	+37°C
External Dimensions (WxLxH) mm	600*700*871
Capacity / LT	132 L
Inner Glass Door	+
Number of Shelves	2 pcs Stainless Steel Cr-Ni Shelves
Polyurethane Thickness	61 mm
Packing Dimensions	740x690x1130 mm
Gross KG	115 Kg
Internal Lighting	-
Door Lock	+
Alarm	+
Internal Surface	Stainless Steel CR-NI 304
External Surface	Galvanized Steel with Electrostatic Powder Coated
Heating / Cooling System	Fan-forced
Insulation	CFC-Free Polyurethane
Castors	2 Braked , 2 Regular , 2 Ball Joint Feet
Temperature Sensor	NTC
Control System	Microprocessor Controlled
Thermal Printer	Optional
Graphical Chart Recorder	Optional
PC Connection	USB
Voltage / Hz	220V-50Hz / 110V-60HZ
Cooling Gas	R134a/R290
5'5 inch Touch Screen Display	Optional



# EKL Serie (-10/+70)

## EKL 100



MODEL	EKL 100
Temperature Range (°C)	-10°C/+70°C
Temperature Accuracy (°C)	+/-0,1°C-+/-0,5°C
Humidity Range (%)	%0-%99
Humidity Accuracy (%)	+/- %2
Insulation Material	CFC Free Polyurethane Foam
Insulation Thickness	61
Humidity Material	Ultrasonic Humidifier
Refrigeration System	Compressor Refrigeration System Fan Circulation
Heating System	Heater Element With PID Control
Step Program Quantity	5
Program Mode Continuous and Discontinuous	+
Voltage	180-230 Volt
Frequency	50 Hz
Interior Material	304 Quality Stainless Steel
Exterior Material	Galvanized Steel With Electrostatic Painted
Interior Dimensions (G*D*Y) mm	475*493*555
Exterior Dimensions (G*D*Y) mm	600*660*1037
Volume Lt.	130
Net Volume	110
Refrigerant	R134A

- The Devices have temperature range from -10°C to +70°C. The end user can adjust the temperature from -10°C to +70°C.
- The devices have humidity range from %0 to %99. The end user can adjust the humidity from %0 to %99.
- The device have maximum +/- %2 humidity accuracy.
- The high density CFC free Polyurethane foam was used in the device for the device insulation.
- The device humidifier is ultrasonic humidifier. The boiler humidifier was not used in the Emsas stability test chambers. so that when the humidifier works the device do not have temperature accuracy because of boiler. So that the end user have advantage by ultrasonic humidifier according to the boiler humidifier.
- The Stabilite chambers have refrigerations systems with compressors coolings. And the same time our refrigerations system have circulations ventilator inside of cabinet to have equal temperature uniformity inside of the chamber.
- The heating systems of the device was made of heater element. The heater elements was control by PID system. So that the heater elements ensure low energy consumption. At the same time the heater element ensure the temperature stability inside of the chamber by PID control system.
- The Emsas Stabilite chambers softwares have steps programs. The steps programs have 3 different mode. The 3 different modes are continuously mode, discontinuously mode and endless mode.
- The Endless Mode: when the end user choose this mode, the end user should adjust one temperature set point, one humidity set point and the chamber will work the set point the end user was adjusted up to end user turn off the device.
- Discontinuously Mode: When the end user choose this mode, the end user should adjust temperature set point and humidity set point in the step program up to 5 steps. The maximum step program have to be 5. if end user want, the end user can choose less than 5 steps. When the device will be finished all of the programs, the device will turned off by itself in this working mode.
- Continuously Mode: The end user can adjust maximum 5 different step program or less than 5. When All of the steps programs will be finished, the device can turn back the first steps programs again. And then the device will work in this cycle up to the end user will turn off the device.
- Emsas Stabilite Chambers have "TIMER" specification. The timer specification is when the cabinet temperature and humidity reach set points degrees, the timer start to count up to zero. Timer start to count according to the end user adjust.
- Emsas Stabilite chamber have delaying starting mode specification. Delaying starting mode is when the temperature and humidity reach the set point, the timer start to count. Temperature and humidity can not reach set point degree, the timer do not start to count.
- The device works with 220 Voltages and 50 Hz frequency.
- The device interior material was made of 304 quality stainless steel. So that this interior material ensure the inside of the cabinet from the contamination.

# BOD INCUBATOR

## (-10/+ 70)

- Product Description: BOD incubator (Biochemical Oxygen Demand) Inkubator , The BOD incubator is that measure microorganisms in a water sample amount of oxygen consumption in one period. We can use the Bod incubators to make water quality tests. Microorganisms take oxygen from the water sample. So that Water sample oxygen amount is decreased. If the oxygen amount will be decreased ,that means that water sample is dirty.
- The BOD incubators ensure stabil chamber temperature and oxygen level. The end users put the water sample of the BOD incubators. The microorganism consumes the oxygen in water samples. After that end users measure oxygen concentration decreasing in a period. In the end of the end user calculates a BOI value according to the oxygen consumption.
- Area Of Use:
  - Water Quality Tests
  - Researching of microorganism and Metabolism
  - Determining the growth rate of microorganisms
  - In meeting the growth rates of microorganisms under different conditions
- The Devices have temperature range from -10°C to +70°C. The end user can adjust the temperature from -10°C to +70°C.
- The Device temperature accuracy is from +/-0.1°C to +/-0.5°C.
- The high density CFC free Polyurethane foam was used in the device for the device insulation.
- The device insulation thickness can be changed from 61mm to 97.5mm according to the device volumes.
- The BOD incubators have refrigeration systems with compressors coolings. And at the same time, our refrigeration system has circulation ventilator inside of cabinet to have equal temperature uniformity inside of the chamber.
- The heater element was used in the BOD incubator heating system.
- The heating systems of the device were made of heater element. The heater elements were controlled by PID system. So that the heater elements ensure low energy consumption. At the same time, the heater element ensures the temperature stability inside of the chamber by PID control system.
- The BOD incubators have step program. When the cabinet temperature comes to the set point degree, the timer of the device starts to count. After that the device works according to the program end user adjusted. The device was turned off automatically.
- The Timer can have up to 99 minutes.
- The device electrical power is 220 Volt / 50 Hz.
- The device was made of 304 quality stainless steel. So that the contamination risk will be minimum.
- The device exterior surface was made of electrostatic painting galvanized stainless steel.
- The Refrigerant of the device is R134a. This refrigerant is not flammable.



## EBOD 100



MODEL	EBOD 100
Temperature Range (°C)	-10°C/+70°C
Temperature Accuracy (°C)	+/-0,1°C-+/-0,5°C
Insulation Material	CFC Free Polyurethane Foam
Insulation Thickness	61
Refrigeration System	Compressor Refrigeration System Fan Circulation
Heating System	Heater Element With PID Control
Step Program Quantity	1
Program Mode Continuous and Discontinuous	+
TIMER	99 Minutes
Voltage	180-230 Volt
Frequency	50 Hz
Interior Material	304 Quality Stainless Steel
Exterior Material	Galvanized Steel With Electrostatic Painted
Interior Dimensions (G*D*Y) mm	475*493*555
Exterior Dimensions (G*D*Y) mm	600*660*1037
Volume Lt.	130
Net Volume	110
Refrigerant	R134A



MEDICAL COOLING & HEATING DEVICES



[www.emsas-as.com.tr](http://www.emsas-as.com.tr)  
[www.kandolabi.com](http://www.kandolabi.com)  
[www.asidolabi.com](http://www.asidolabi.com)  
ISO 9001:2008  
ISO 13485



Muradiye Sanayi Bölgesi Muradiye Mahallesi  
28 Sokak No:6 Yunusemre - MANİSA / TURKEY  
Tel: +90 (236) 214 03 96 - 97 - 98 Fax: +90 (236) 214 07 06  
izmir Tel: +90 (232) 479 55 22 - 479 55 23  
mail: [export1@emsas-as.com.tr](mailto:export1@emsas-as.com.tr)  
[www.emsas-as.com.tr](http://www.emsas-as.com.tr)