



Product Catalogue

www.LyncMed.com



Our Team & Our Mission

We make better healthcare accessible, affordable and easily available.



Who we are

One-stop Solution, Trusted Products, beyond Satisfaction

LyncMed is a leading provider of medical and healthcare products serving all segments of the healthcare market including hospitals and clinics, nursing homes and long-term care facilities, private medical practices, therapists, and more. With the most comprehensive range of trusted products and top brands available, we provide **"one stop shopping"** access to the best value and selection. Easily shop all of our solutions online and in-stock items are available for **"same-day shipment"**.

What we do

Unlike most manufacturers who just sell their own products, LyncMed also sells a wide range of top-quality items from thousands of other leading medical, healthcare and ergonomic brands. This is done to help ensure that our customers can find the solutions they need. Where products don't exist for specific needs, LyncMed's innovative Research & Development team often designs and develops new items. In fact, we are known for our cutting-edge solutions to specific medical and ergonomic needs.

Our mission is to maximize the efficiencies in supply chain, and increase operating margins. A digital marketplace is a robust model that can begin with one product segment such as surgical disposables and then expand into other spaces such as power tools, metal surgical instruments, small medical equipment, and eventually even large medical equipment. As the database grows, the marketplace for transporting these materials gets stronger and more efficient.



Contents



01	Protective Products	01
02	Surgical Gowns	13
03	Cotton Products	15
04	Gauze Products	17
05	Adhesive Wound Care Dressing	19
06	Cleansing & Disinfection Products	21
07	Bandages and Tapes	22

nitrile



features

- comply with EN455, Parts 1, 2, 3, 4
- comply with MDD 93/42/ECC (CE class I)
- approved for food contact
- protection against chemicals, viruses and bacteria
- latex-free to eliminate the risk of allergies
- powder-free to eliminate powder-induced irritation
- thin walls for great sensitivity
- beaded cuffs for easy donning
- textured at fingers full textured to enhance grip
- resistant to tearing
- no sagging or slipping off
- ambidextrous
- non-sterile
- available in sizes S-XL
- colour: purple, blue, black
- 100 gloves by weight

LyncCARE powder-free nitrile examination glove are top quality products which highly resist permeation by chemicals, viruses and bacteria. Thin walls and textured finger surface enhance grip and guarantee excellent tactile sensitivity

LyncCARE nitrile gloves are designed to satisfy individuals whose skin tends to get irritated by these substances. LyncCARE gloves ensure safety on many levels as well as maximum comfort, which makes them an excellent option even for the most demanding users.



PE TPE EVA

Economical import and Cold-stamped embossed gloves "Loose Fit" design for easy on/easy off use. Recommended for light tasks, such as salad and sandwich prep. Perfect for when frequent glove changes are required. Ideal for fast food and buffet serving lines. Perfect for the price conscious customers. Poly gloves are produced from Polyethylene resin which fully complies for food contact.

latex



features

- comply with EN455, Parts 1,2,3,4
- comply with MDD 93/42/ECC (CE class I)
- approved for food contact
- lightly powdered with cornstarch to facilitate donning and prevent skin drying usually connected with talcum powder
- low protein content
- beaded cuffs for easy donning
- smooth surface
- resistant to tearing
- no sagging or slipping off
- ambidextrous
- non-sterile
- available in sizes S-XL
- colour: natural latex
- 100 gloves by weight



latex PF



features

- comply with EN455, Parts 1,2,3,4
- comply with MDD 93/42/ECC (CE class I)
- powder-free to eliminate powder-induced irritation
- low protein content
- polymer-coated
- beaded cuffs for easy donning
- smooth surface
- resistant to tearing
- no sagging or slipping off
- ambidextrous
- non-sterile
- available in sizes S-XL
- colour: natural latex
- 100 gloves by weight



vinyl



features

- comply with EN455, Parts 1,2,3,4
- comply with MDD 93/42/ECC (CE class I)
- approved for food contact
- beaded cuff for easy donning
- smooth surface
- no slipping off
- ambidextrous
- DEHP - free
- non - sterile
- available in size S-XL
- colour: transparent white
- 100 gloves by weight

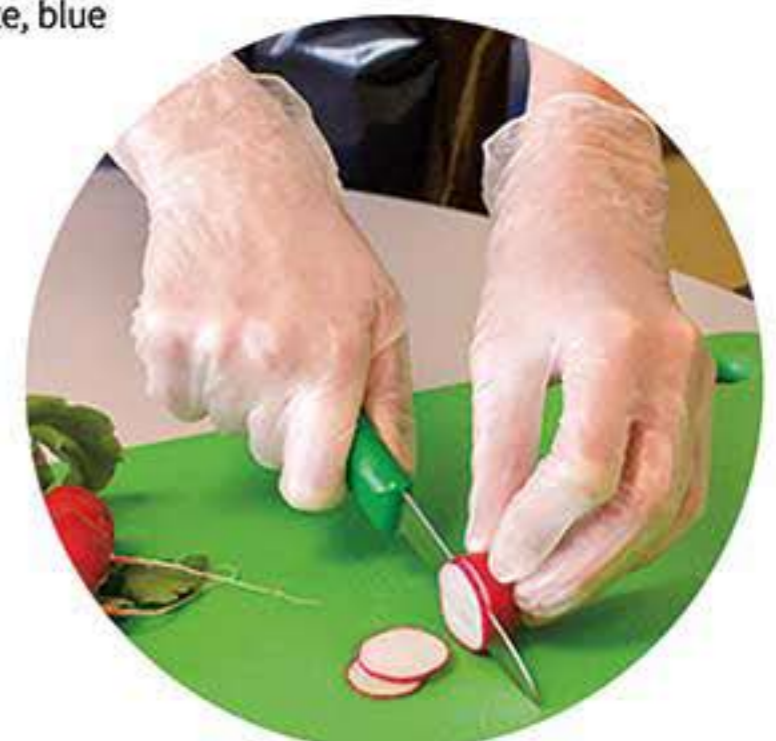


vinyl PF



features

- comply with EN455, Parts 1,2,3,4
- comply with MDD 93/42/ECC (CE class I)
- powder-free to eliminate powder-induced irritation
- approved for food contact
- beaded cuff for easy donning
- smooth surface
- no slipping off
- ambidextrous
- DEHP - free
- non - sterile
- available in sizes S-XL
- color: transparent white, blue
- 100 gloves by weight





Over-the-head isolation gowns

Over-the-head yellow isolation gowns with thumbhooks

- Lightweight spunbond polypropylene provides comfort and protection in minimal fluid settings



Cat. No.	Size/description	Qty.
Over-the-head neck style, thumbhooks		
LM1101	Universal, yellow	1 ea/bag, 100 bags/cs
LM1102	X-large, yellow	10/pk, 100/cs (flat pack)

Over-the-head yellow isolation gowns with thumbhooks

- Lightweight, breathable SMS material provides light fluid protection.



Cat. No.	Size/description	Qty.
Over-the-head neck style, thumbhooks		
LM1201	Universal, yellow	1 ea/bag, 100 bags/cs
LM1202	X-large, yellow	10/pk, 100/cs (flat pack)



Isolation gowns

These protective garments are available in single-layer spunbond polypropylene for basic coverage or a tri-layer SMS fabric for increased fluid protection.

Basic spunbond polypropylene isolation gowns

Comfort and protection for use in minimal fluid settings. Generously sized for greater coverage and flexibility.



Cat. No.	Size/description	Qty.
Neck and waist ties, elastic wrists, flat pack		
LM1221	Universal, yellow	10/pk, 100/cs
LM1222	X-large, yellow	10/pk, 100/cs
LM1223	Universal, blue	10/pk, 100/cs

Tri-layer SMS fabric isolation gowns

Lightweight material; generously sized for greater coverage and flexibility. For use in low fluid settings.



Cat. No.	Size/description	Qty.
Neck and waist ties, elastic wrists, flat pack		
LM1331	Universal, yellow	10/pk, 100/cs
LM1332	X-large, yellow	10/pk, 100/cs
Neck and waist ties, elastic wrists, flat pack		
LM1333	Universal, blue	10/pk, 100/cs
LM1334	X-large, blue	10/pk, 100/cs





Surgical Face Mask

- Skin friendly high-quality PP material, 3-ply
- Low breathing resistance, bacterial filtration efficiency(BFE) > 98%
- Anatomic adjustable, integrated nose bridge
- Ear loop, elastic band, latex-free
- 17.5*9.5cm



Surgical Face Mask With Shield

- Skin friendly high-quality PP material, 3-ply
- Highly air permeable, bacterial filtration efficiency(BFE) > 98%
- 3 folder comfortable design
- Anatomic adjustable, integrated nose bridge
- Tie back, latex - free
- 17.5*9.5cm



Active Carbon Face Mask

- 4 - ply PP with carbon filtration
- Ear loop, elastic band, latex - free
- Anatomic adjustable, integrated nose bridge
- Hypo allergenic
- 17.5*9.5cm



Non-sterile procedure gowns

Non-sterile procedure gowns

Designed specifically for non-sterile applications such as endoscopy, dialysis, urology, emergency rooms, burn units, labor and delivery, housekeeping, clinical labs and biopsies. These gowns are constructed from a tri-layer SMS fabric and are appropriate for use in moderate fluid settings.



Cat. No.	Size/description	Qty.
Hook-and-loop neck closure, knit cuffs, waist belt		
LM2331	Universal, blue	10/pk, 60/cs
LM2335	X-large, blue	10/pk, 60/cs



PP Shoe Cover

- 25 - 40 g/m² PP
- Hand made or machine made
- Customers logo could be printed
- Elastic edge



PP Non - skid Shoe Cover

- 40 g/m² PP
- Non-skid, very stable, for long use
- For a secure foothold even on smooth or slimy floors
- Made by machine



CPE Shoe Cover

- Strong quality, waterproof
- Made by machine
- Elastic edge, embossed



PP/CPE Shoe Cover

- PP + CPE coated sole
- Very strong, tear proof
- Waterproof sole
- For a secure foothold even on smooth or slimy floors



Bouffant Cap

- PP nonwoven
- With elastic head band
- Use: Nursing, hospital, food industry, catering
- Different color, dia, are available
- High breathability



Mob Cap

- PP nonwoven
- With elastic head band
- Lightweight mob cap
- Low breathing resistance
- Food processing, hospital, laboratory, surgical area



Mesh Hairnet

- Nylon mesh
- Elastic head band
- avoids the formation of dandruff and hair loss
- Food processing, hospital, laboratory, surgical area
- Highly air permeable



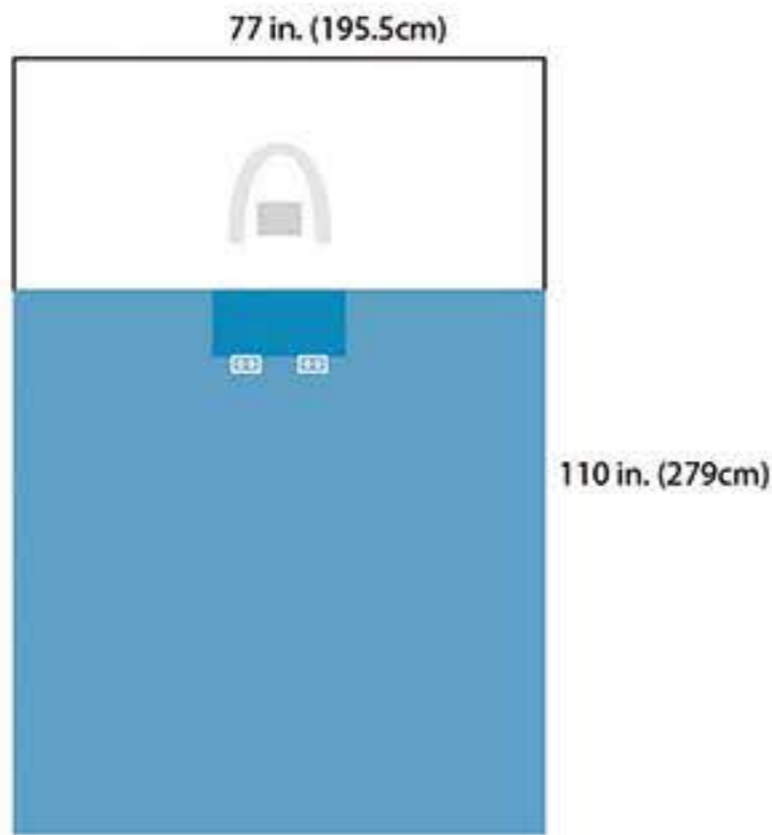
Peaked Bouffant Cap

- PP nonwoven
- 12g/m² cap, 80g/m² peak
- Elastic head band
- Food processing, handling and hygiene
- Air permeable



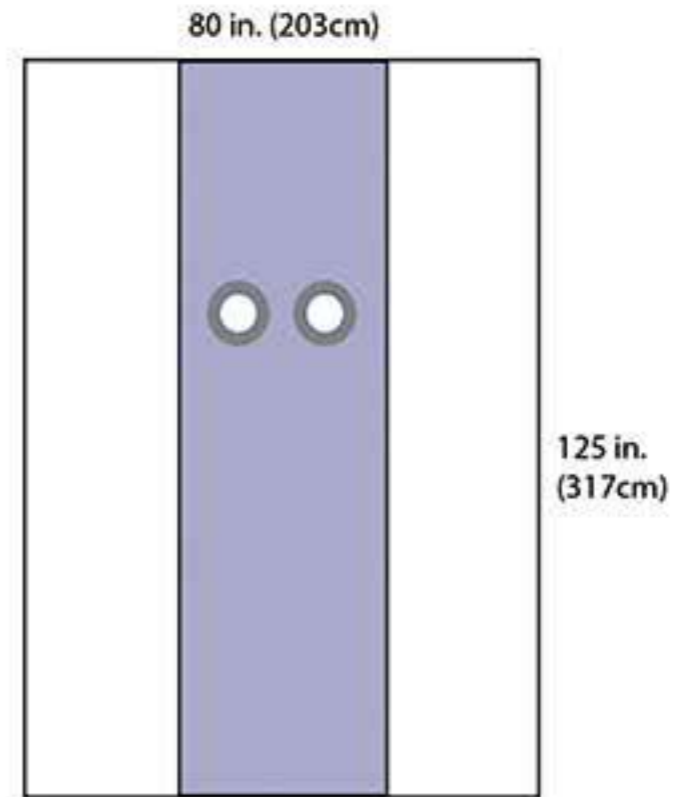


Eye Drape with Pouch



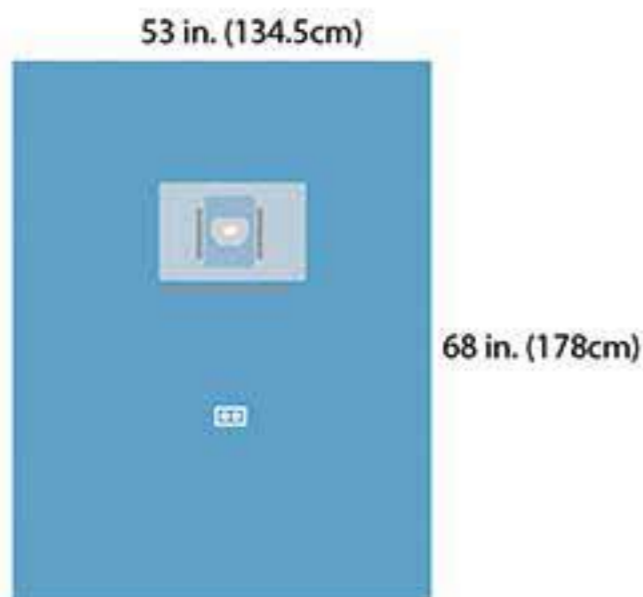
- Attached fluid control pouch with port specifically designed for use with a wrist rest
- Clear view top panel, 77 x 35 in. (195.5 x 89cm)
- Cord-holding tabs
- Full incise, 5 x 4 in. (13 x 10cm)
- Instrument pad
- SMS material

Angiography Sheet



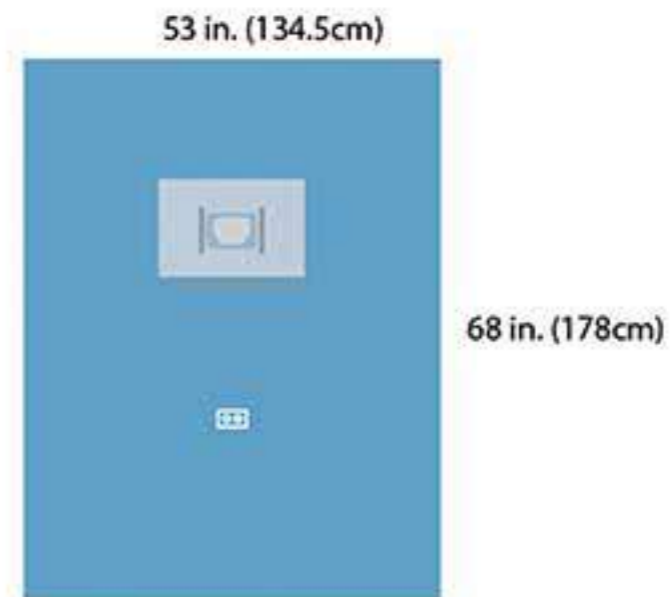
- Aperture: 3.5 in. dia. (9cm dia.)

Ophthalmic Drape



- Dual saddlebag fluid control pouches with malleable strips
- Malleable breather-bar
- Oval incise aperture, 1.5 x 2.5 in. (4 x 6cm)
- Cord-holding tab
- SMS material

Ophthalmic Drape



- Cord-holding tab
- Dual saddlebag fluid control pouches with malleable strips
- Full incise, 4 x 5 in. (10 x 13cm)
- Malleable breather-bar
- SMS material



PE Oversleeves

- Waterproof, sturdy
- With elastics on both sides
- Food area, preparatory works and in all hygienic relevant



PP Oversleeves

- 35g/m² PP
- With elastics on both sides
- Air permeable and moisture repellent, sturdy
- Meat and food industry



Microporous Oversleeves

- 60gsm
- With elastics on both sides
- Air permeable and moisture repellent, sturdy
- Off general purpose barrier protection



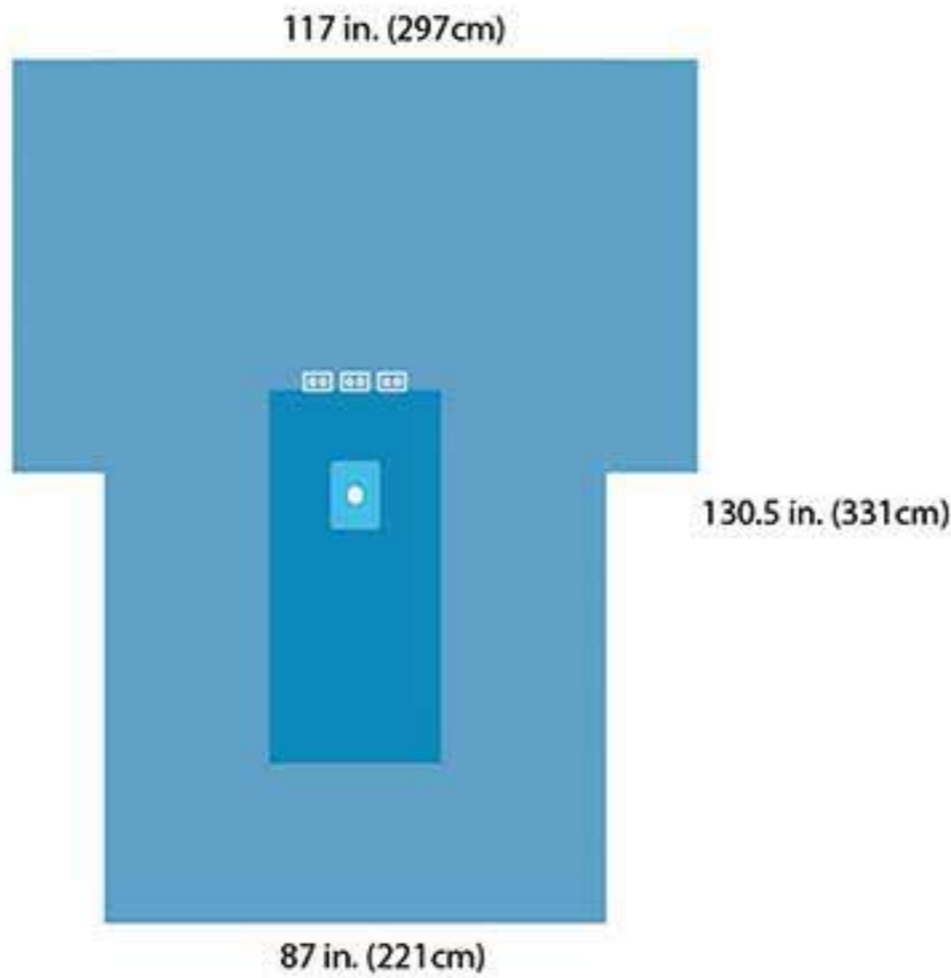
PP/PE Oversleeves

- 90gsm
- 46*22.5cm
- With knitted cuff
- Air permeable and moisture repellent, waterproof
- Off high - class purpose barrier protection





HD Extremity Drape

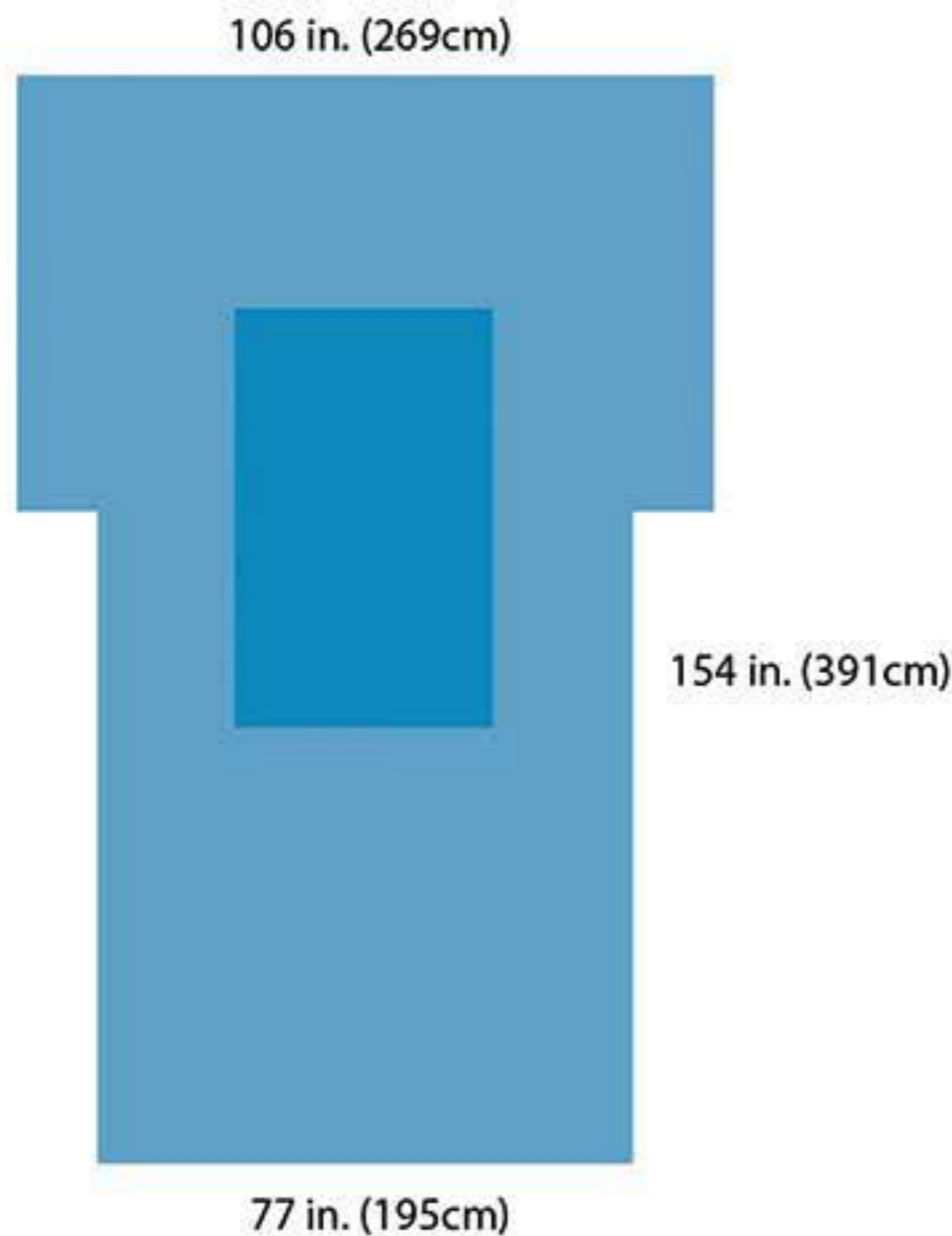


- Absorbent reinforcement, 30.5 x 55.5 in. (77.5 x 141cm)
- Anesthesia screen
- Armboard covers
- Cord-holding tabs
- Fenestration, circular elastic, 2.5 in. (6cm)
- Heavyweight, premium fabric
- Included in pack 59180

Basic drape fabric
 Reinforcements
 Side panel material
 Adhesive
 Incise
 Clear plastic panels, anesthesia screens and pouches

Description	Setup Pack	Setup Pack	Orthopedic Setup Pack
Drape towel, adhesive, nonabsorbent		4	4
Mayo Stand Cover, reinforced poly, 23 in. (58cm) wide	1	1	1
Suture bag	1	1	1
U-Drape, poly, adhesive, 60 x 72 in. (152 x 183cm), 6 x 21 in. (15 x 53cm) split			1
Stockinette, 12 x 48 in. (30 x 122cm), X-large			1
Drape Tape			4
Outer wrap, reinforced poly table cover, 44 x 90 in. (112 x 228cm)	1		
Outer wrap, reinforced poly table cover, 50 x 90 in. (127 x 228cm)		1	
Outer wrap, reinforced poly table cover, 60 x 90 in. (152 x 228cm), heavy-duty			1

Cardiovascular Drape



- Absorbent foam reinforcement, 38.5 x 60 in. (98 x 152cm)
- Armboard covers
- Non-fenestrated
- Included in pack 9150

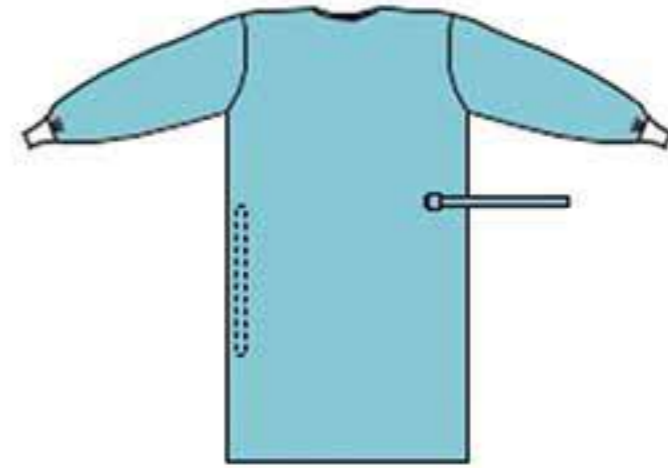
- Cardiovascular Drape
- Head Drape, 99 x 53 in. (251 x 134.6cm), adhesive, absorbent reinforcement
- Side Drape, 38 x 77 in. (96 x 195cm), adhesive, absorbent reinforcement
- Foot Sheet, 75 x 53 in. (190 x 134.6cm), adhesive, absorbent reinforcement
- Three-Quarter Drape Sheet, 52 x 76 in. (132 x 193cm)
- Cardiovascular Peri-Groin Drape
- Cardiovascular Split Drape II
- Bottom Drape with reinforcement
- Gown, sterile back, fabric reinforced, X-large
- Gown, poly reinforced, X-large
- Gown, reinforced, X-large, with towel in outer wrap
- Gown, reinforced, large, with towel in outer wrap
- Absorbent towel
- Drape Towel, with adhesive strip, 19 x 30 in. (48 x 76cm)
- Suture bag
- Mayo stand cover, reinforced poly, 23 x 55 in. (58 x 140cm)
- Overhead table cover, 80 x 90 in. (203 x 228.6cm), reinforced poly with a 44 x 72 in. (112 x 183cm) fabric sterile field extension, SMS reinforcement, 40 x 90 in. (101.6 x 228.6cm)
- Non-absorbent drape towel with adhesive strip, 15 x 26 in. (38 x 66cm)
- Peri-towel
- Plastic sheet, 50 x 59 in. (127 x 150cm)
- Heavy-duty back table cover, 80 x 110 in. (203 x 279cm), SMS reinforcement, 37 x 110 in. (94 x 279cm)
- Standard back table cover, 50 x 90 in. (127 x 228.6cm), SMS reinforcement, 29 x 90 in. (73.6 x 228.6cm)



SMS Surgical Gown (Standard)

SIZE : S 120x150cm / M 130x150cm / L 150x160cm
XL 150x190cm / XXL 170x170cm

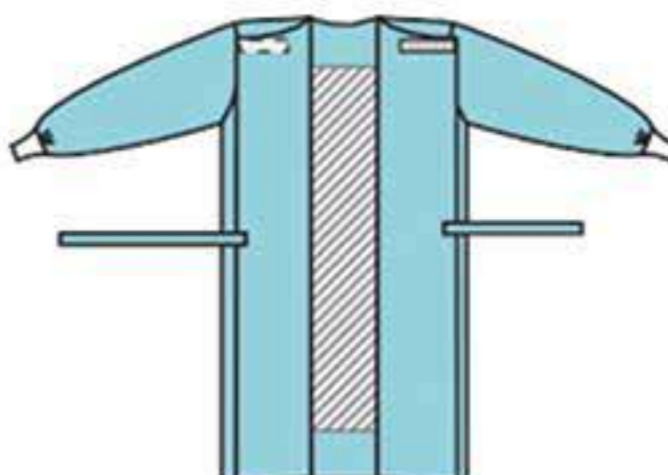
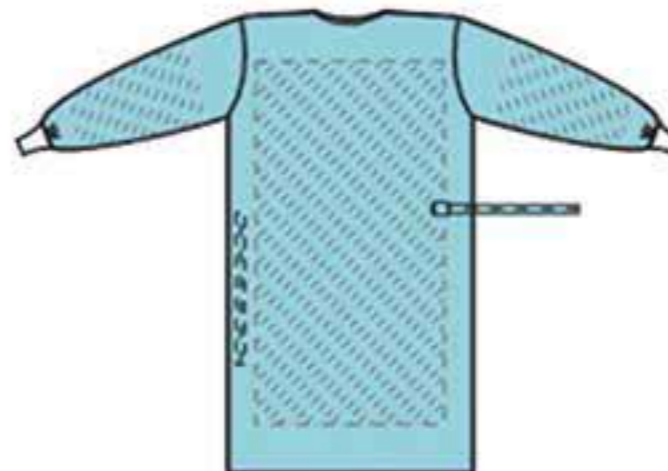
SMS surgical gown is made of hydrophobic SMS material and designed for optimal protection during surgical procedures of moderate duration involving moderate amounts of body fluids and moderate risk of infection.



SMS Surgical Gown (Reinforced)

SIZE : S 120x150cm / M 130x150cm / L 150x160cm
XL 150x190cm / XXL 170x170cm

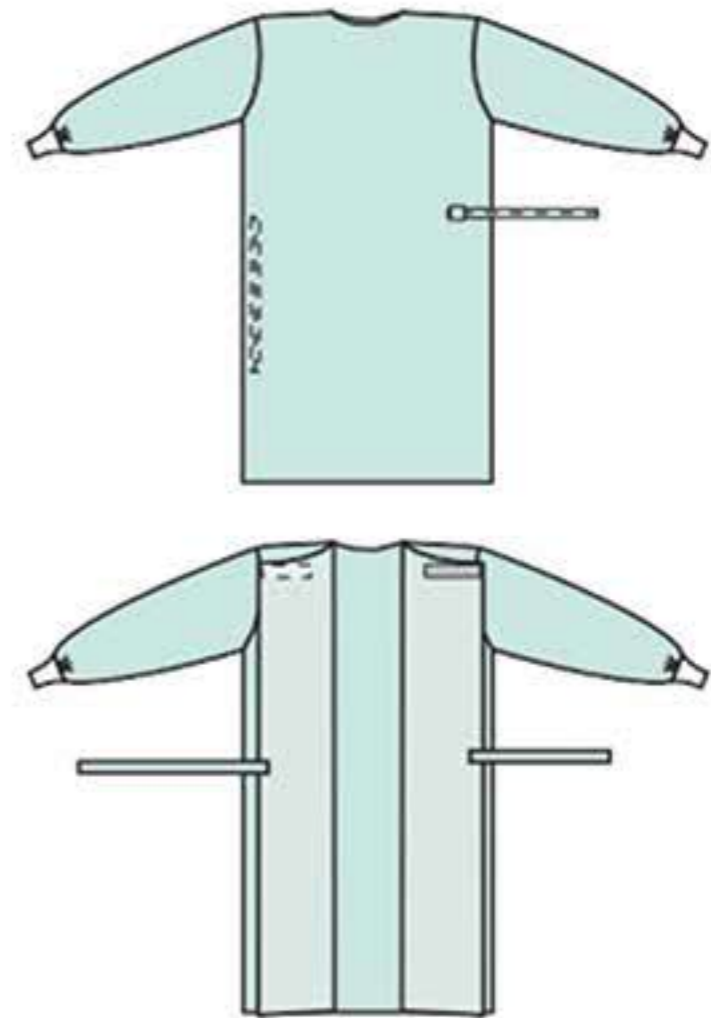
Cut and fit identically to standard model, but with additional reinforcement in critical chest and forearm areas. It's designed for optimal protection during long surgical procedures involving large amounts of body fluids and high risk of infection.



Spunlace Surgical Gown (Standard)

SIZE : S 120x150cm / M 130x150cm / L 150x160cm
 XL 150x190cm / XXL 170x170cm

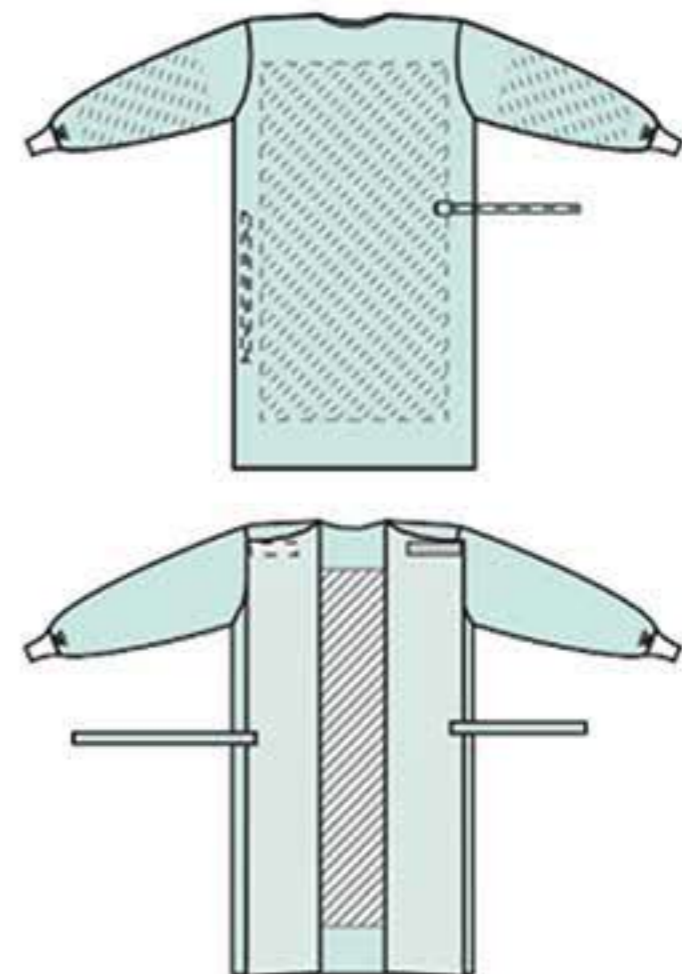
Spunlace Surgical Gown is made of hydrophobic spunlace material and designed for optimal protection during surgical procedures of moderate duration involving moderate amounts of body fluids and moderate risk of infection.



Spunlace Surgical Gown (Reinforced)

SIZE : S 120x150cm / M 130x150cm / L 150x160cm
 XL 150x190cm / XXL 170x170cm

Cut and fit identically to standard model, but with additional reinforcement in critical chest and forearm areas. It's designed for optimal protection during long surgical procedures involving large amounts of body fluids and high risk of infection.





Cotton Bud

Sterile/Non sterile

Stick: Plastic/Bamboo/Paper

Size: • Length of Stick:7.5cm/15cm

• Length of Cotton Head: 2.2cm/2.5cm

• Diameter of Cotton Head:5mm/6mm

Cotton bud consists of a small wad of cotton wrapped around one or both ends of a short rod, usually made of either wood, rolled paper, or plastic, commonly used in a variety of applications including first aid, cosmetics application, cleaning, and arts and crafts.



Cotton Ball

Sterile/Non sterile

PC Weight: 0.3G/0.5G/0.8G/1G/2G

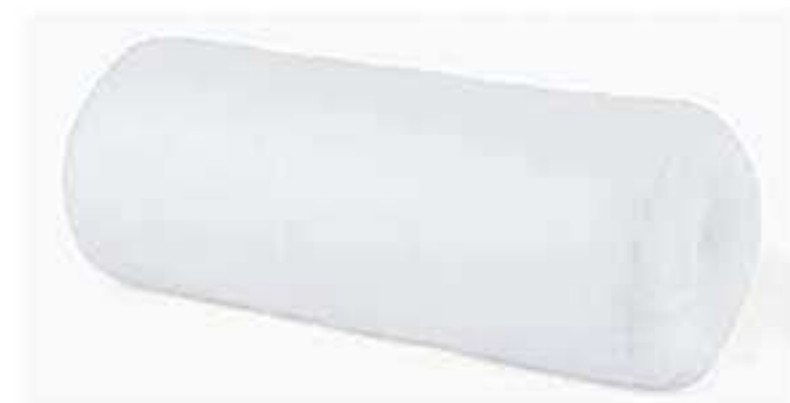
Cotton ball is designed for a variety of uses throughout the hospital. 100% cotton, soft and absorbent. Available in non-sterile packaging as well as sterile packaging.



Cotton Wool Roll

Roll weight: 50g/100g/400g/500g;

Cotton Roll is soft, absorbent and 100% bleached cotton roll wrapped in paper. Cotton roll can be cut to any shapes and sizes, has wide range of applications for medical usage.



Nonwoven Eye Pad

Self-adhesive/Non adhesive

Material: Different GSM

Sizes: 5.5x7.5cm; 6x9.5cm

Nonwoven eye pad consists of absorbent pad which made from 100% cotton and covered with a nonwoven outer layer, ideally designed for eye care. Can be used after ophthalmic surgery to protect wound and absorb exudate.



Cotton Dental Roll

Sterile/Non sterile

Sizes: 0.8x3.8cm; 0.95x3.8cm; 1x3.8cm; 1.2x3.8cm;

Cotton dental roll is made from highly absorbent pure white cotton, holds its shape and performs well for dental procedures, help to absorb exudate, clean wound or stop bleeding.



Undercast Padding

Material: 100% Cotton/Synthetic

Size: 5cm x 2.7m / 7.5cm x 2.7m / 10cm x 2.7m

15cm x 2.7m / 20cm x 2.7m

Cotton undercast padding is constructed of 100% cotton, helps to absorb exudate, ensures patient comfort.



Gauze Swabs

Sterile/Non-sterile;

Threads: 13th/17th/20th;

Size: 5x5cm; 7.5x7.5cm; 10x10cm;10x20cm;

Layers: 8/12/16/32;

With X ray/ Without X ray;

Gauze swabs are designed for general wound treatment, especially suitable in primary treatment of dirty, infected and highly exudative wounds; as swabs and dressings in minor surgery in the outpatient department and on the ward. Available in a number of size, mesh & ply.



Paraffin Gauze

Paraffin gauze is a fine mesh, gauze impregnated with paraffin, designed to provide a moist environment for wound, facilitate healing process. Can be used as primary dressing on the wound, when cover a secondary dressing such as gauze swabs to absorb exudate, the paraffin gauze prevents the secondary dressing adhere to wound site.



Lap Sponge

Sterile/Non-sterile;

Pre-washed/Non pre- washed;

Threads: 13th/17th/20th;

Size: 22.5x22.5cm; 30x30cm; 45x45cm;

Layers: 4/6/8/12;

With X ray/ Without X ray;

With loop/without loop;

Gauze swabs are made from 100% bleached cotton and widely used to clean and cover minor wounds, to absorb secretion and to treat secondary healing wounds.



Gauze Roll

Threads: 13th/17th/20th;

Size: Width: 90cm;

Length: 90m or any;

Player: 1/2/4;

With X ray/ Without X ray;

Gauze roll, made of 100% cotton gauze, easy to cut. Provides economic choice for cleansing and wound compress.



Gauze Bandage

Threads: 13th/17th/20th;

Size: Width: 5cm/7.5cm/10cm/15cm/;

Length: 3.6m/4.5m/5m;

Gauze Bandage without woven-edge is made from 100% cotton gauze, soft and conformable, high absorbency. Ideal for securing dressings, splints or for providing mild compression and support.



Transparent Film Dressing

Size: 6x7cm; 7x9cm; 8x10cm; 10x12cm; 12x25cm; 15x20cm;

Transparent film dressing is made from the transparent, semipermeable polyurethane film with hypoallergenic acrylic adhesive.



Film Island Dressing

Size: 6x7cm; 8x10cm; 10x12cm;

10x15cm; 10x20cm; 10x25cm; 10x35cm;

Film island dressing consists of transparent, semi-permeable polyurethane film with hypoallergenic acrylic adhesive, an absorbent pad with low adherent wound contact layer, two strips of release paper and one layer of PE film works as dressing carrier.



IV Dressing

Size: 4x6cm; 6x7cm; 7x9cm; 8.5x10; 10x12;

IV dressing is a moisture permeable transparent polyurethane film dressing specifically designed to meet the needs of catheter fixation and to keep the catheter site dry. Widely used in hospital and clinical settings



Nonwoven Adhesive Wound Dressing Strip

Size: Width:5cm/10cm/15cm/20cm;

Length:4.5m/5m/Any;

Nonwoven adhesive wound dressing strip is made of soft, breathable nonwoven fabric coated with hypoallergenic acrylic adhesive. It features gentle yet secure fixation, can be removed painlessly and without leaving any residues.



Nonwoven Adhesive Wound Dressing

Size: 5x7cm; 9x10cm; 10x15cm; 10x20cm; 10x25cm;

10x30cm; 10x35cm;

Nonwoven Adhesive Wound Dressing is indicated for the management of post-operative wounds and superficial wounds. It consists of soft nonwoven fabric coated with hypoallergenic acrylic adhesive, an absorbent pad with low-adherent wound contact layer and two strips of release paper.



Finger Bandage

Size: 7.2x1.9cm; ϕ 2.2cm;

Finger bandage is a wound plaster ideally designed for wounds in the finger, consists of a stripe substrate coated with adhesive, an absorbent pad with non-adherent wound contact layer, breathable and comfortable for the wound sites.



Alcohol Pad

Size: 3x3cm-2ply; 4x4cm-1ply;

Alcohol pad is made from soft nonwoven fabric, saturated with alcohol and widely used for all-purpose cleaning and disinfecting. The wipes are individually packed sterile for convenience and economy.



Iodine Cotton

Size: 3x3cm-2ply; 4x4cm-1ply;

Iodine cotton is made of 100% cotton spunlace nonwoven fabric impregnate with iodine, ideally designed for clinical disinfection of wound, injection site or skin.



Medwin (Cotton Cohesive Flexible Bandage)

Size: 2.5cmx4.5m / 5cmx4.5m / 7.5cmx4.5m
10cmx4.5m / 15cmx4.5m

Medwin is a cotton cohesive elastic support and compression bandage, made of cotton substrate and elastic fiber. It is lightweight, porous and hand-tearable. Due to its special cohesive treatment, Medwin sticks to itself but not to skin or hair, no clips or fasteners required.



Cowin (Nonwoven Cohesive Flexible Bandage)

Size: 2.5cmx4.5m / 5cmx4.5m / 7.5cmx4.5m
10cmx4.5m / 15cmx4.5m

Cowin is a flexible, hand-tearable, cohesive bandage made of nonwoven fabric and elastic fiber. It is soft, breathable, easy to apply, and sticks to itself not to skin, no clips or fasteners required. Cowin provides light compression and support, which help patient feel more comfortable.



Microwin (Paper Tape)

Size: 1.25cmx10yard / 2.5cmx10yard / 5cmx10yard
7.5cmx10yard

Microwin tape is a latex-free, hypoallergenic surgical paper tape. It is breathable and gentle to the skin yet adheres well and leaves minimal adhesive residue upon removal.





Winesio (Kinesiology Tape)

Size: 2.5cmx4.5m / 5cmx4.5m / 7.5cmx4.5m

Winesio is the ideal choice for sore, over-used, and inflamed muscles that need extra support, comfort and relaxation. It has a proven record of success for both sportsmen and medical patients. The wave pattern adhesive has a lifting effect on the skin which can reduce swelling and inflammation by improving circulation and reduce pain by taking pressure off.



Elastowin (Cotton Elastic Adhesive Bandage)

Size: 2.5cmx4.5m / 5cmx4.5m / 7.5cmx4.5m
10cmx4.5m

Elastowin is made from high twist, elastic cotton cloth with hot-melt adhesive. It helps provide elasticity needed for pressure dressings. It is heavy duty, porous and skin friendly. A colored line centered on the backcloth aids in uniform application. Elastowin is best used when moderate to maximum compression is required.



Winwrap (Foam Underwrap)

Color: Red/Blue/Yellow/Skin

Size: Any Customized Size

Winwrap is a foam wrap made of polyurethane. It is used under adhesive bandages or sports tapes (like Prowin, Prowin-P, Lightwin or Elastowin) to protect skin from tape chafing, and keep hair from sticking to the adhesive. It also facilitates tape removal and eases potential pain in the removal process.



Hebwin (High Elastic Bandage)

Size: 5cmx4.5m / 7.5cmx4.5m / 10cmx4.5m
15cmx4.5m

Hebwin is an orthopedic grade, stretchable bandage used to create localized pressure. It can be easily wrapped and secured. The softness and unique knitted construction provide extra comfort.



Cotton Elastic Bandage

Size: 5cmx4.5m / 7.5cmx4.5m / 10cmx4.5m
15cmx4.5m

Cotton Elastic Bandage is made of 100% cotton which provides light compression, applies properly to avoid cutting circulation. The bandage is soft, breathable and comfortable.





Transwin (PE Tape)

Size: 1.25cmx10yard / 2.5mx10yard / 5cmx10yard
7.5cmx10yard

This perforated PE tape is especially designed with microholes for outstanding permeability and breathability. It is latex-free hypoallergenic and gentle to the skin, yet adheres very well without leaving any residue upon removal.



Zowin (Zinc Oxide Adhesive Plaster)

Skin/White color

With/without plaster

Size: 1.25cmx4.5m / 2.5cmx4.5m / 5cmx4.5m
7.5cmx4.5m / 10cmx4.5m

Zowin is a latex free hypoallergenic non-stretch cotton tape with zinc oxide adhesive. It is easy to hand tear, breathable, and conformable.



Zowin-P (Porous Zinc Oxide Adhesive Tape)

Size: 1.25cmx4.5m / 2.5cmx4.5m / 5cmx4.5m
7.5cmx4.5m / 10cmx4.5m

Zowin-P is made of fabric with a hypoallergenic zinc oxide adhesive. It offers strong support and efficient stabilization of joint structures. It is hand tearable along both widthwise and lengthwise.



Durawin (Silk Tape)

Size: 1.25cmx10yard / 2.5cmx10yard / 5cmx10yard
7.5cmx10yard

Durawin is a latex-free, hypoallergenic surgical tape. It is breathable and gentle to the skin and offers high strength and good initial adhesion.





P.O.P Bandage

Size: 1.25cmx10yard / 2.5cmx10yard / 5cmx10yard
7.5cmx10yard

P.O.P Bandage consist of a cotton bandage that has been combined with plaster of paris, which hardens after it has been made wet.



PBT Bandage

Size: 5cmx2.7m / 7.5cmx2.7m / 10cmx2.7m / 15cmx2.7m

PBT bandage (conforming bandage) is a kind of bandage consists of cotton and polyamide. The bandage is soft, high elastic, self-styled edge, and easy to use.



Tubular Bandage

Size: (Other Sizes also available) 4.2cmx10m / 6.25cmx10m
6.75cmx10m / 7.5cmx10m / 2.7m

Tubular bandage is a knitted bandage with a tubular shape people can wear over an extremity to secure a dressing. This type of bandage provides support for the soft tissue around the wound and is more comfortable to wear than other types of bandages.



ACCESSIBLE MEDICAL DEVICE BETTER HEALTHCARE

LyncMed Technology Group

Please contact us if you require further details:

TEL: +1(224)552-0204 +86(10)86468058

E-mail: contactus@lynmed.com

Website: www.lynmed.com



China office:

Add: GUOTOUSHANGKE Building
No. 1111, South HuiHe Road,
ChaoYang District, Beijing



Germany office:

Add: Borkener Str. 1BD 46117
Oberhausen Germany



Hongkong office:

Add: Room 06,13A/F, South Tower,
World Finance Centre, 17 Canton Road,
Tsim Sha Tsui, Kowloon, HongKong.



Italy office:

Add: via Monte Bianco 800141 Roma,Italy



India office:

Add: No. 607, Lane No. 6,New Colony
Mughal Mohalla Lal bazar,Srinagar,
JAMMU AND KASHMIR,190023,India



Spain office:

Add: C/Magnolios,22 29018 Malaga, Spain