

# Keeler

Ophthalmic Instruments

2008 International Catalogue

# Binocular Indirect Ophthalmoscopes

Since 1957, when we introduced the Fison, our first binocular indirect ophthalmoscope, Keeler has developed a reputation as the innovator in the development and manufacture of indirect ophthalmoscopes. 2003 was no exception and saw the introduction of the first Keeler "Wireless" indirect ophthalmoscopes available on our All Pupil or Vantage Plus models.

2008 saw the introduction of the Vantage Plus LED which provides brighter, whiter illumination to give you better detail of the retina. Plus our new light Slimline Lithium Polymer battery gives you much longer battery life.

The next couple of pages will guide your choice but first read on to discover the benefits shared by all Keeler indirect ophthalmoscopes as standard.



Go Wireless with Vantage Plus - the market leading indirect ophthalmoscope!

## New LED exclusively on Vantage Plus and Spectra Plus

LED another first in innovation. We are pleased to present a binocular indirect with LED illumination. The LED cooler colour provides a brighter, whiter illumination providing greater detail, allowing you to find retinal pathology that is not visible with Xenon illumination.

## Comfort and balance

Lightweight materials are used throughout the design of each unit; combined with soft cushioning and a non slip contoured shaped headband to maximise comfort and balance. These features will be particularly appreciated during long examinations.

## Clear, sharp images – enclosed KeeView Optics™

All Keeler indirect optics are specially coated and individually laser aligned to provide the sharpest clearest images every time you use your indirect, time after time, after time.

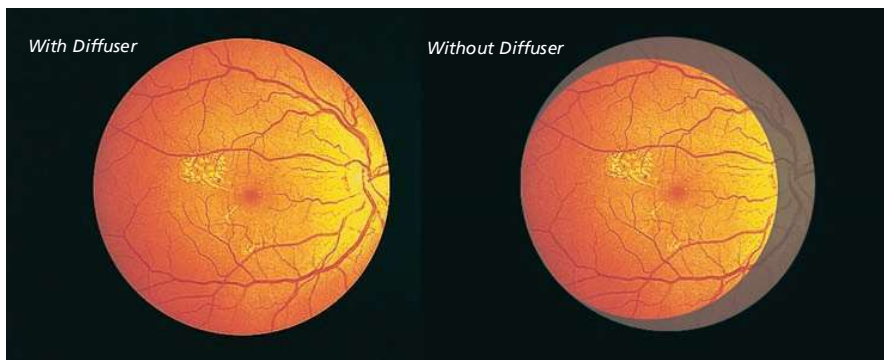
## Adjustable brilliant illumination

Why have all of the controls on the wall when the instrument is on your head? On All Pupil and Vantage Plus the illumination rheostat is located on the headband providing easily accessible fully controllable light. Keeler indirects have the brightest illumination that can be turned down to as low as 2% of maximum if required.



## Wide angle diffuser

The Keeler wide angle diffuser eliminates shadows on the edge of the condensing lens expanding the field of view significantly, which is particularly useful during difficult and peripheral examinations. There is also less discomfort for the patient because the light is softer.



## Apertures and filters



**Red Free** - This filter is used to examine blood vessels in fine detail. By filtering out the red light, blood vessels are silhouetted against a green background.



**Cobalt Blue** - This filter is used with fluorescein dye for angiography.



**Large Aperture** - Ideal when examining fully dilated pupils.



**Intermediate** - Ideal for children and sensitive patients.



**Small Aperture** - Ideal for undilated pupils.



**Diffuser**

# Vantage Plus

The best just gets better

## New LED illumination and Slimline Lithium Polymer battery

We are delighted to present the new, exclusive Vantage Plus LED.

The LED cooler colour provides brighter, whiter illumination, longer battery life, and freedom from purchasing bulbs. The LED life expectancy is up to 10,000 hours.

Clinically, the superior optics combined with the LED illumination could provide greater detail, allowing you to find retinal pathology that was not visible with the Xenon bulb BIO's.



*New Slimline Lithium Polymer Battery  
(paper clip shows scale)*

Our new Slimline Lithium Polymer battery is as light and as small as the new mini iPod.

- Longest life, brightest and whitest, better detail
- 25% brighter than standard bulbs
- New Slimline Lithium Polymer battery weighs only 53 grams
- Combined LED and Lithium Polymer battery can provide up to 6 hours of use on a single charge



## Unique - Intelligent Optical System (IOS)

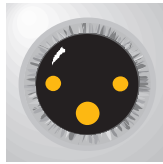
(Patent pending)

**At last - now when you change the aperture the optics and mirrors automatically adjust for you, without the need to flip another lever!**

Keeler has designed this unique one step movement to make your examinations easier and faster. The (IOS) mechanism (patent pending) means that when you select the small, medium or large aperture the optics automatically adjust, providing 3 dimensional stereoscopic views of the retina through all pupil sizes.

### Large Pupil

When looking through a large fully dilated pupil the optics are separated and the light source remains in the upper position, achieving maximum stereopsis.



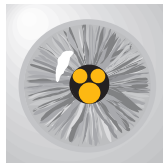
### Intermediate Pupil

The viewing optics and light sources are in a 'mid position' for maximum stereopsis.



### Small Pupil

When looking through a small pupil the viewing optics and light source are converged to allow you to view the retina through the smallest pupils stereoscopically.



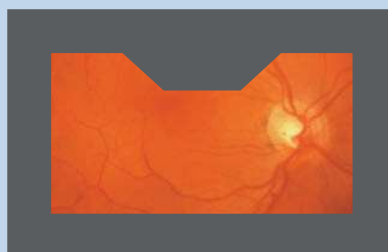
## Exclusive - IOS Optics allows Small Pupil Imaging without any obstructions



### Vantage Plus IOS Optics

View through Vantage Plus with IOS Optics.

When small pupil is selected there is no obstruction of the retina.



### Non IOS Optic System

View through NON IOS Optical Systems.

When small pupil is selected there is an obstruction, reducing your clinical information.

## Quality and efficiency

The redesigned optics combined with the new LED or Xenon light source offer brighter high definition retinal images - PLUS you get more life from whichever Keeler battery (Metal Hydride or Lithium) you use.

## 15% lighter

The Vantage Plus uses advanced textured engineering materials, providing a lighter, smaller and more compact instrument without compromising the renowned Keeler reputation for robustness, reliability and quality.

## Comfortable and perfectly balanced

A new soft cushioned headband has been designed to maximise comfort, it adjusts and balances perfectly to suit all head shapes and sizes.



## The new teaching mirror just slides on and off with ease

Allowing two observers to view the retina at the same time.

## Unique - Go Wireless patented technology

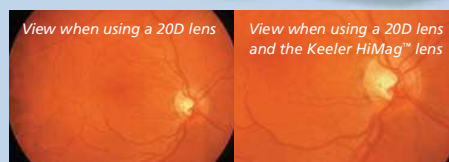
Total freedom - our patented wireless technology leaves you free to move around without any wire or cord constraints.

## Never run out of power

Keeler wireless system comes standard with two lithium batteries (slimline) and they last so long, it may take months before you need to charge them again.

## Unique - The new HiMag™ (patented) lens just slides on and off with ease

This unique feature is only offered with the Vantage Plus indirect. It gives you a 1.6X additional magnification than with a condensing lens alone, providing superb stereoscopic images. Scratch resistant coated optics guarantee high quality images at all times and HiMag™ can be simply flipped out of view when not required.





## New high contrast optics

The new compact and high contrast viewing optics use LED or Xenon illumination that gives you brilliantly crisp, glare free, superior views of the retina every time.



## Filters and Apertures

IR/UV filters are built into the optics of the Vantage Plus with optional filters and a choice of 3 apertures plus a soft light diffuser.



P D Range: 48 - 76mm

## Video Vantage <sup>(Patented)</sup>

Video Vantage is a compact, lightweight video mounting device for use with a high resolution up to date miniature camera. It is ideal for teaching, tele-medicine, patient education and documentation. Keeler's Penta Prism Video Optical system means no beam splitters, no mirrors and no light loss. What you see on the monitor is exactly what you see through the Vantage – the same way up, the same way round and just as bright. A unique feature is the independent image alignment control, which provides a totally comfortable working angle.



## New slim professional carrying case!

Transport your instrument in style and choose if you want to use your wheels or carry it on your shoulder.



### Part Numbers

#### Wireless LED version

<b>1205-P-1016</b>	Vantage Plus LED, Slimline Battery & Accessories*
<b>1205-P-1020</b>	Vantage Plus LED, Slimline Battery & charger
<b>1205-P-1015</b>	Vantage Plus LED, Standard Battery & Accessories*
<b>1205-P-1019</b>	Vantage Plus LED, Standard Battery & charger

#### Wireless Bulb version

<b>1204-P-3065</b>	Vantage Plus Bulb version, Slimline Battery & Accessories*
<b>1204-P-3067</b>	Vantage Plus Bulb version, Slimline Battery & charger
<b>1204-P-3059</b>	Vantage Plus Bulb version, Standard Battery & Accessories*
<b>1204-P-3056</b>	Vantage Plus Bulb version, Standard Battery & charger

#### Wired LED version

<b>1205-P-1011</b>	Vantage Plus LED Wired & Accessories*
<b>1205-P-1010</b>	Vantage Plus LED Wired

#### Wired Bulb version

<b>1204-P-3058</b>	Vantage Plus Bulb version Wired & Accessories*
<b>1204-P-3051</b>	Vantage Plus Bulb version Wired

#### Accessories

<b>1202-P-7205</b>	Vantage Plus Teaching Mirror
<b>1202-P-7192</b>	Vantage Plus Hi Mag Lens
<b>1012-P-7006</b>	Vantage Plus Bulbs (pack of 2)
<b>1299-P-1028</b>	Video Vantage including Camera in Carrying Case
<b>3412-P-7000</b>	Vantage Plus Carrying Case
<b>1201-P-6075</b>	Small Depressor
<b>1201-P-6067</b>	Large Depressor

## Vantage Plus and All Pupil bulb



\*Accessories include: Volk 20D Lens, Small and Large Thimble, Pad of 50 Recording Charts, Teaching Mirror Assembly, Set of 12 Colour Pencils, Wireless charger, battery pack assembly (Wireless), Smart Pack Power Supply and Rechargeable Battery (Wired), Spare Bulb (bulb versions only) and Carrying Case.