



# OrthoMaster

INPHO SOFTWARE

Professional ortho rectification software with automated one-step processing of aerial blocks, intelligent true-ortho capabilities and built-in DTM Interpolation.

OrthoMaster ensures high speed batch processing and optimized hardware utilization for excellent productivity:

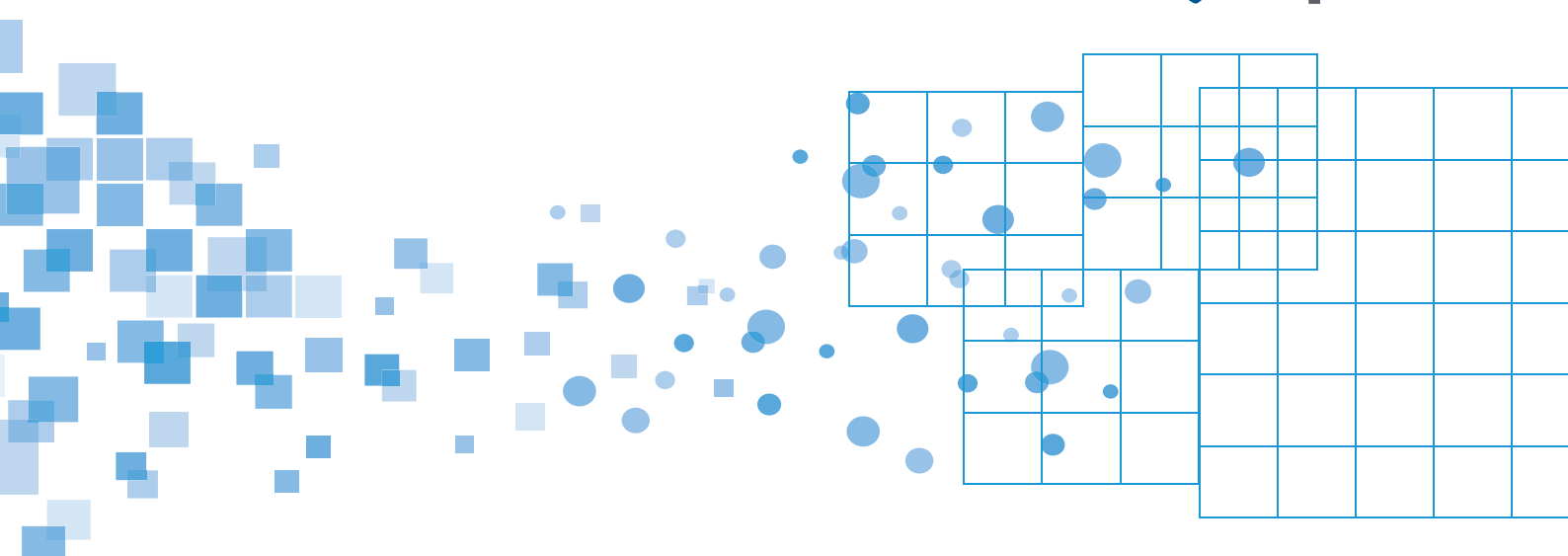
- ▶ Create digital aerial or satellite imagery with ensured constant scale using orientation and digital terrain models (DTM) as source data
- ▶ Derive DTMs directly from arbitrarily distributed XYZ point cloud data and breaklines
- ▶ Effectively eliminate the relief displacements by intersecting morphological 3D object data with the basic DTM
- ▶ Fully automatic differential rectification, or alternatively rectification onto a definable plane when no DTM data is available
- ▶ Optimized for automated, high-performance orthophoto production using state-of-the-art multi-threading and distributed processing
- ▶ Batch mass rectification of standard or true ortho images – the perfect match for OrthoVista ortho-mosaicking software

## Feature Capabilities

- ▶ Orthophoto generation from aerial images (frame and pushbroom sensors), and from various types of satellite imagery
- ▶ Automated one-step batch processing of complete aerial image blocks; also in batch mode:
  - Advanced batch mode for subsequent OrthoVista postprocessing (OrthoVista license required)
  - Complete ortho workflow with OrthoVista input file generation and OrthoVista pre-processing steps
- ▶ Orthophoto generation in pre-set polygonal area-of-interest:
  - Flexible definition/import of multiple geometry- and quality-optimized ortho areas per image
  - Automatic ortho area generation excluding edges from orthophotos for extracting the best quality image parts for optimized computation speed and storage requirement
  - Defined overlap percentage of adjacent orthophotos
- ▶ Unique true-ortho capability in combination with OrthoVista; advanced modelling of bridges, buildings and other man-made objects – masking of occluded areas

## Key Features

- ▶ Effectively batch-create thousands of rectified orthophotos in one single process
- ▶ Automated one-step processing
- ▶ Unique true ortho capability and Orthophoto generation
- ▶ Flexible Height model support
- ▶ Multicore processing and multi-threading
- ▶ Effectively batch-create thousands of rectified orthophotos in one single process



## TECHNICAL SPECIFICATIONS

## FEATURES OVERVIEW

- Flexible Height model support:
  - Hybrid grid based SCOP DTMs and various other formats
  - Realtime generation of TIN models
  - Rigorous consideration of morphological data such as breaklines
  - Unlimited volumes of DTM data supported by TPIX tile management
- Transform complete projects including EO, DTM/point clouds and orthos, between different datums and projections:
  - Grid-based transformations
  - 7-parameter transformations
  - Custom geoid application
- Multicore processing and multi-threading for higher performance
- Optional distributed processing in combination with DPMaster high volume throughput

## BENEFITS

- Optimized workflow for OrthoVista Mosaicking
- Geometric precision through integrated DTM generation with rigorous consideration of breaklines and man-made structures (buildings, bridges)
- Excellent radiometric quality through advanced processing algorithms
- Unique true-ortho capabilities
- Extensive automation features for minimal user interaction
- Powerful handling of very large DTMs
- Seamlessly integrates into the complete inpho software system or any 3rd-party photogrammetric workflow

## OPTIONS

- Monthly rental and upgrades from lite versions
- Maintenance includes support and version updates
- Updates from previous versions
- OrthoMaster (DPL) (DPMaster computer pool organization required):
  - High-volume extension using Distributed Processing technology
  - Efficiency increase by using OrthoMaster in a multi-core and multicore computer setup. Prerequisite is one full license of OrthoMaster and DPMaster (free) for the pool administration
- OrthoMaster Lite:
  - Restricted to ortho-rectification of 250 aerial images or 12 satellite or pushbroom (ADS) images
  - No batch processing or multi-threading
  - No sub-block processing

## SYSTEM REQUIREMENTS

- Multicore PC workstation (1 license supports up to 24 cores)
- 32+ GB recommended
- High capacity disk system
- Windows 10, 64 bit

## BUNDLES

## OrthoBox:

- Bundle of OrthoMaster and OrthoVista for maximum ortho performance

## PERFORMANCE

- Suited for mass production of ortho projects. Process about 200 orthos per hour on a standard PC workstation

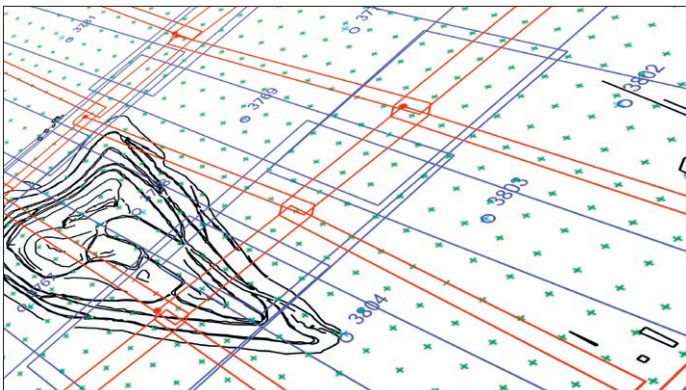
## SUPPORTED SENSOR TYPES

- Imaging sensors:
  - Analogue and digital frame sensors
  - Panchromatic or multichannel
  - ADS Pushbroom sensors
  - Satellite sensors (including SPOT 1-7, Pléiades, Quickbird, IKONOS, GeoEye, OrbView, RapidEye, WorldView, Gaofen, Tianhui, Ziyuan and more)

## FEATURES OVERVIEW

- Supported image formats:
  - Georeferenced orthos: GeoTIFF, TiffWorld (tfw), ADS+tif/tfw
  - TIFF, JPG, BigTiff
  - JPEG2000, TIFFjpeg
- Height model / morphology data formats available in the DTMToolkit for Grid interpolation, point cloud tiling and splitting, thin-out operations (classification and filtering, gap-filling, contour generation available with additional license, SCOP++ LiDAR module for classification and filtering)
  - Grid-operations:
    - All supported formats (\*.dtm \*.rdh \*.bil \*.fit \*.tol \*.grd \*.tif \*.tiff \*.smti \*.tpix.shp)
  - Output Formats
    - BIL, BWNP, BXYZ, DTM, DXF, DXF\_TIN, FLT, GRD, LAS, SHP\_TIN, TIFF16, TIFF32, VRML, VRML\_TIN, WNP, XYZ
  - Point-cloud operations
    - Input formats: LAS, XYZ, BXYZ
    - Output formats:
      - For tiling, filtering and gap filling: LAS
      - For surface modeling: SCOP DTM
      - For contouring: DXF and TIF
- Project Conversion/Import/Export:
  - Project conversion to Inpho
  - Z/I, DAT /EM, BAE SocetSet
  - Project and EO exports:
    - DAT /EM Summit Evolution, BAE Socet Set, Z/I project, Aviosoft Ori, ABC-PC, AP32, Phorex/Pex, PATB, Bluh, Bingo
    - EO imports: Generic ASCII, Phorex/Pex, PATB, Bluh, Bingo
- DTM data import:
  - SCOP DTM, Winput, XYZ mass points, break/form lines, DXF, ArcGIS Shapefile, ArcGIS ASCII Grid, LAS, NED Float
- Geocoded Raster files
- Tile Manager File (TPIX):
  - Import of multiple raw data files, merged with SCOP functionality

For prices and distribution partner information please visit:  
<https://geospatial.trimble.com/where-to-buy>



Contact your local Trimble Authorized Distribution Partner for more information

## NORTH AMERICA

Trimble Inc.  
 10368 Westmoor Dr  
 Westminster CO 80021  
 USA

## EUROPE

Trimble Germany GmbH  
 Am Prime Parc 11  
 65479 Raunheim  
 GERMANY

## ASIA-PACIFIC

Trimble Navigation  
 Singapore PTE Limited  
 3 HarbourFront Place  
 #13-02 HarbourFront Tower Two  
 Singapore 099254  
 SINGAPORE