

# Product catalogue



 **symbios**  
custom-made for you



# Table of Contents

## HIP - Femoral Implants

INDIVIDUAL HIP®	5
SPS®	7
HARMONY®	8
Revision Stems	10
Femoral Heads	11

## HIP - Acetabular Implants

APRIL®	14
SERENITY®	16
INLOCK X®	18
Reconstruction	19
Other Cups	20

## KNEE - Implant Systems

ORIGIN® PS	22
ORIGIN® CR	24
FIRST Fixed	26
FIRST Mobile	28
FIRST Sensitive	31
FIRST REV	32
FIRST REV Sensitive	34

## KNEE - Single-Use Ancillaries

FIRST KNEE-PLAN®	36
FIRST Single-Use Instruments	37

## CEMENTS AND ACCESSORIES

Cements	40
Accessories	41

## INSTRUMENTATIONS

	44
--	----





**HIP**

Femoral Implants





# INDIVIDUAL HIP®

Personalised femoral stem, together with personalised smooth compactor or rasp.

## INDIVIDUAL HIP®

---

3000 0201    INDIVIDUAL HIP® TiHA

---

Personalised cementless stem.  
Titanium alloy (Ti6Al4V-ISO 5832-3), coated with porous titanium and hydroxyapatite. 12/14 5°40' taper.

### Design options

#### Coating

- Partial HA coating
- Full HA coating

#### Collar

- No collar
- Normal collar




---

3000 0301    INDIVIDUAL HIP® Cemented

---

Personalised cemented stem.  
Stainless steel (M30NW-ISO 5832-9).  
12/14 5°40' taper.

### Design options

#### Collar

- No collar
- Normal collar



## Order information

All INDIVIDUAL HIP® orders must be passed through the website portal **Symbios Connect** ([www.symbios.ch/connect/](http://www.symbios.ch/connect/)) and require the transferring of a CT scan to Symbios according to the specific HIP-PLAN® protocol. The components are delivered to the hospital within the time specified when placing an order on **Symbios Connect** and at the condition of receiving the CT images at Symbios on the due date. For more information, contact your Symbios representative.

# INDIVIDUAL HIP®

Personalised femoral stem, together with personalised smooth compactor or rasp.

## Compactors and rasps

3000 0501 INDIVIDUAL HIP® Compactor

Personalised smooth compactor.  
Stainless steel (316L-NF S94-090).  
12/14 5°40' taper.



3000 0511 INDIVIDUAL HIP® Compactor NT

Personalised smooth compactor, without trial neck.  
Stainless steel (316L-NF S94-090).  
12/14 5°40' taper.



3000 0701 INDIVIDUAL HIP® Rasp

Personalised piqued rasp.  
Stainless steel (316L-NF S94-090).  
12/14 5°40' taper.



3000 0711 INDIVIDUAL HIP® Rasp NT

Personalised piqued rasp, without trial neck.  
Stainless steel (316L-NF S94-090).



# SPS®

## SPS® HA

Cementless anatomic femoral stem.  
 Titanium alloy (Ti6Al4V-ISO 5832-3). Coatings: Porous titanium and hydroxyapatite.  
 12/14 5°40' taper. CCD shaft angle 134°.

Sizes	Right (R)	Left (L)	Length
B	3022 0200	3022 0201	115 mm
C	3022 0300	3022 0301	120 mm
D	3022 0400	3022 0401	124 mm
E	3022 0500	3022 0501	131 mm
F	3022 0600	3022 0601	139 mm
G	3022 0700	3022 0701	146 mm
H	3022 0800	3022 0801	153 mm



## SPS® Evolution

Cementless anatomic femoral stem.  
 Titanium alloy (Ti6Al4V-ISO 5832-3). Coatings: Porous titanium and hydroxyapatite.  
 12/14 5°40' taper. CCD shaft angle 129°.

Sizes	Right (R)	Left (L)	Length
B	3023 0200	3023 0201	115 mm
C	3023 0300	3023 0301	120 mm
D	3023 0400	3023 0401	124 mm
E	3023 0500	3023 0501	131 mm
F	3023 0600	3023 0601	139 mm
G	3023 0700	3023 0701	146 mm
H	3023 0800	3023 0801	153 mm



# HARMONY®

## HARMONY® Evolution Standard

Cementless straight femoral stem.  
 Titanium alloy [Ti6Al4V-ISO 5832-3]. Coating: Hydroxyapatite.  
 12/14 5°40' taper. CCD shaft angle 129°.

Sizes	Ref.	Length
8	3031 0801*	115 mm
9	3031 0901	130 mm
10	3031 1001	140 mm
11	3031 1101	145 mm
12	3031 1201	150 mm
13	3031 1301	155 mm
14	3031 1401	160 mm
15	3031 1501	165 mm
16	3031 1601	170 mm
18	3031 1801	180 mm
20	3031 2001	190 mm

\*Maximum weight limit 70 kg



## HARMONY® Evolution Standard Cemented

Cemented straight femoral stem.  
 Stainless steel [M30NW-ISO 5832-9], smooth polished.  
 12/14 5°40' taper. CCD shaft angle 129°.

Sizes	Ref.	Length
8	3034 0801	115 mm
9	3034 0901	130 mm
10	3034 1001	140 mm
11	3034 1101	145 mm
12	3034 1201	150 mm
13	3034 1301	155 mm
14	3034 1401	160 mm
15	3034 1501	165 mm
16	3034 1601	170 mm



Launch of HARMONY® Evolution in the first half of 2022 with limited availability during this phase. For more information, contact your Symbios representative.

# HARMONY®

## HARMONY® Evolution Offset

Cementless straight femoral stem with offset and varus.  
 Titanium alloy [Ti6Al4V-ISO 5832-3]. Coating: Hydroxyapatite.  
 12/14 5° 40' taper. CCD shaft angle 125°.

Sizes	Ref.	Length
9	3032 0900	130 mm
10	3032 1000	140 mm
11	3032 1100	145 mm
12	3032 1200	150 mm
13	3032 1300	155 mm
14	3032 1400	160 mm
15	3032 1500	165 mm
16	3032 1600	170 mm
18	3032 1800	180 mm



## HARMONY® Evolution Offset Cemented

Cemented straight femoral stem with offset and varus.  
 Stainless steel [M30NW-ISO 5832-9], smooth polished.  
 12/14 5° 40' taper. CCD shaft angle 125°.

Sizes	Ref.	Length
8	3035 0800	115 mm
9	3035 0900	130 mm
10	3035 1000	140 mm
11	3035 1100	145 mm
12	3035 1200	150 mm
13	3035 1300	155 mm
14	3035 1400	160 mm
15	3035 1500	165 mm
16	3035 1600	170 mm



Launch of HARMONY® Evolution in the first half of 2022 with limited availability during this phase. For more information, contact your Symbios representative.



# Revision Stems

## STEMSYS® Revision

Cementless straight femoral revision stem with collar and distal locking option.  
Titanium alloy (Ti6Al4V-ISO 5832-3). Coating: Porous titanium and hydroxyapatite.  
12/14 5° 43' taper. CCD shaft angle 135°.

Sizes	Ref.	Length
10*	H45 RC010	200 mm
12	H45 R112	210 mm
12 L	H45 R112L	260 mm
12 XL	H45 R112XL	320 mm
14	H45 R114	220 mm
16	H45 R116	230mm
18	H45 R118	240 mm
20	H45 R120	240 mm

\*Only available in a non-locking version with distal slot.



## STEMSYS® Revision Distal Locking Screw

Distal locking screw. Titanium alloy (Ti6Al4V-ISO 5832-3).

Sizes	Ref.	Length
L 20	H15 SC6020	20 mm
L 25	H15 SC6025	25 mm
L 30	H15 SC6030	30 mm
L 35	H15 SC6035	35 mm
L 40	H15 SC6040	40 mm



## REACTIV™

Cemented straight femoral revision stem with collar.  
Stainless steel (M30NW-ISO 5832-9), smooth polished.  
12/14 5° 43' taper. CCD shaft angle 135°.

Sizes	Ref.	Length
12	H49 SRC012	180 mm
14	H49 SRC014	200 mm
16	H49 SRC016	210 mm
18	H49 SRC018	220 mm

## Compatibility

STEMSYS® Revision and REACTIV™ stems should only be implanted in combination with Evolutis femoral heads.  
Neither Symbios nor Evolutis can claim compatibility of Symbios heads with Evolutis stem cones.

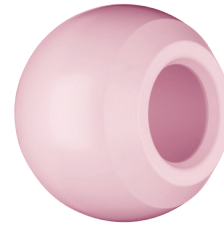
STEMSYS® Revision and REACTIV™ products are manufactured by Evolutis SAS (France) and distributed by Symbios.  
Please check distribution availability for your market with your Symbios representative.



# Femoral Heads

## BILOX® Delta Head

Ceramic head (Al2O3 + ZrO2-ISO 6474-2), compatible with 12/14 5°40' taper.



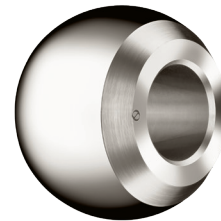
Sizes

Offset in mm

	<b>-4</b>	<b>-3.5</b>	<b>+0</b>	<b>+3.5</b>	<b>+4</b>	<b>+7</b>	<b>+8</b>
∅28	-	2014 2801	2014 2802	2014 2803	-	-	-
∅32	2014 3201	-	2014 3202	-	2014 3203	2014 3204	-
∅36	2014 3601	-	2014 3602	-	2014 3603	-	2014 3604

## Cobalt-Chrome Head

Cobalt-chrome head (CoCrMo-ISO 5832-12), compatible with 12/14 5°40' taper.



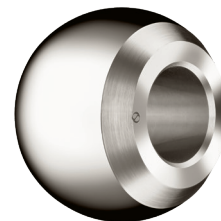
Sizes

Offset in mm

	<b>-4</b>	<b>-3.5</b>	<b>-2</b>	<b>+0</b>	<b>+3.5</b>	<b>+4</b>	<b>+7</b>	<b>+8</b>
∅22.2	-	-	2010 2201	2010 2202	-	2010 2204	-	-
∅28	-	2010 2801	-	2010 2802	2010 2803	-	2010 2804	-
∅32	2010 3201	-	-	2010 3202	-	2010 3203	-	2010 3204
∅36	2010 3601	-	-	2010 3602	-	2010 3603	-	2010 3604

## Stainless Steel Head

Stainless steel head (M30NW-ISO 5832-9), compatible with 12/14 5°40' taper.



Sizes

Offset in mm

	<b>-4</b>	<b>-3.5</b>	<b>+0</b>	<b>+3.5</b>	<b>+4</b>	<b>+7</b>	<b>+8</b>
∅28	-	2011 2801	2011 2802	2011 2803	-	2011 2804	-
∅32	2011 3201	-	2011 3202	-	2011 3203	-	2011 3204

# Femoral Heads

## Unipolar Head

Hemi femoral head for surgical procedures that do not require any acetabular component. Stainless steel [M30NW-ISO 5832-9], compatible with 12/14 5°40' taper.

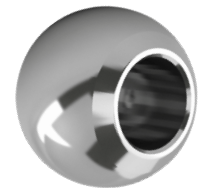


Sizes	Offset in mm		
	-4	+0	+4
∅ 42	155-142	155-042	155-242
∅ 44	155-144	155-044	155-244
∅ 46	155-146	155-046	155-246
∅ 48	155-148	155-048	155-248
∅ 50	155-150	155-050	155-250
∅ 52	155-152	155-052	155-252
∅ 54	155-154	155-054	155-254
∅ 56	155-156	155-056	155-256
∅ 58	155-158	155-058	155-258

Product manufactured by OHST Medizintechnik AG (Germany) and distributed by Symbios. Please check distribution availability for your market with your Symbios representative.

## Evolutis Stainless Steel Head

Stainless steel head [M30NW-ISO 5832-9], compatible with 12/14 5°43' taper.

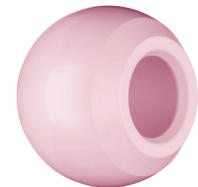


Sizes	Offset in mm						
	-7	-3.5	-2	+0	+2	+3.5	+7
∅ 22.2	-	-	H11 1220	H11 1221	H11 1222	-	-
∅ 28	H11 1279	H11 1280	-	H11 1281	-	H11 1282	H11 1283

Product manufactured by Evolutis SAS (France) and distributed by Symbios. Please check distribution availability for your market with your Symbios representative.

## Evolutis Ceramic Head

Ceramic head [Al2O3 + ZrO2-ISO 6474-2], compatible with 12/14 5°43' taper.

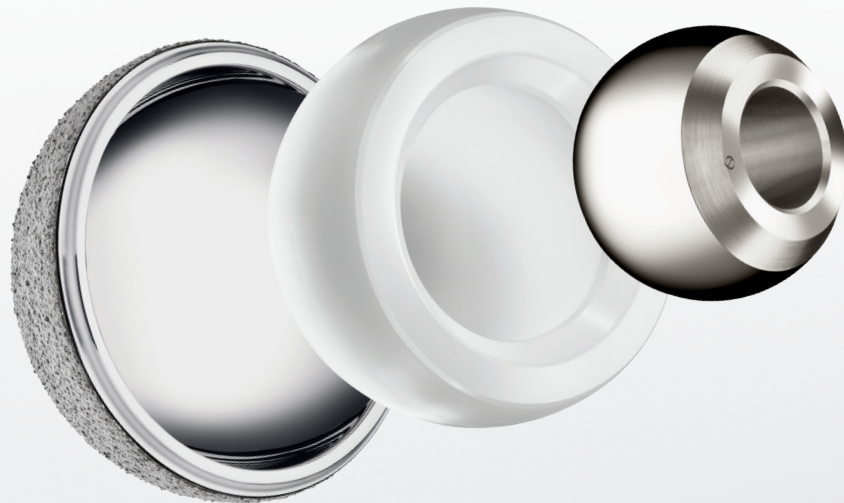
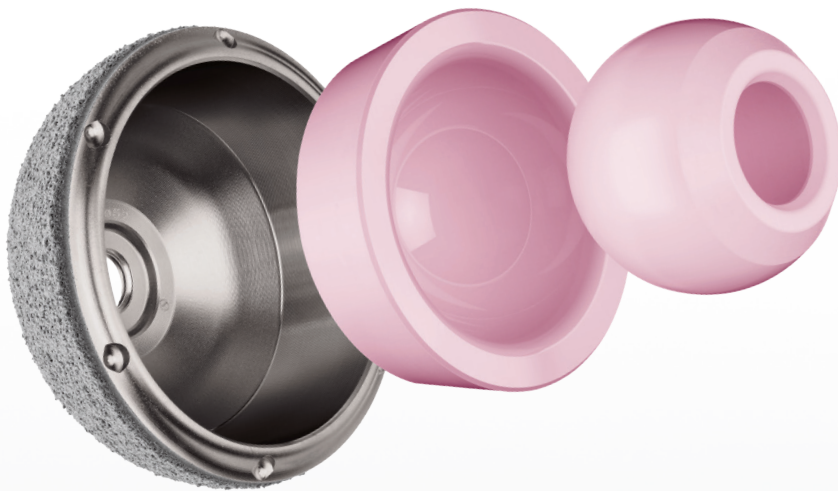


Sizes	Offset in mm					
	-4	-3.5	+0	+3.5	+4	+8
∅ 28	-	H14 C1280	H14 C1281	H14 C1282	-	-
∅ 32	H14 C1320	-	H14 C1321	-	H14 C1322	H14 C1323
∅ 36	H14 C1360	-	H14 C1361	-	H14 C1362	H14 C1363

Product manufactured by Evolutis SAS (France) and distributed by Symbios. Please check distribution availability for your market with your Symbios representative.

**HIP**

# Acetabular Implants



**symbios**  
custom-made for you

# APRIL®

## APRIL® Ceramic

Cementless pressfit acetabular cup.  
Titanium alloy [Ti6Al4V-ISO 5832-3]. Coatings: Porous titanium and hydroxyapatite.

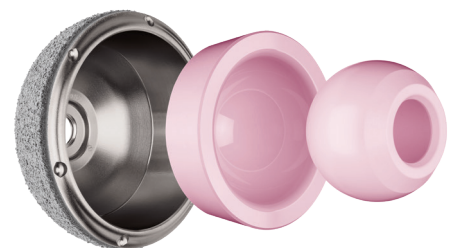


Sizes	Ref.	Compatible inserts	Compatible heads		
			Ø28	Ø32	Ø36
40*	1025 4000*		•		
42*	1025 4200*				
44*	1025 4400*				
46	1025 4600			•	
48	1025 4800				
50	1025 5000				
52	1025 5200				•
54	1025 5400				
56	1025 5600				
58	1025 5800				•
60	1025 6000				
62	1025 6200				
64	1025 6400				

\*Only available upon request

## Compatibility

The APRIL® Ceramic acetabular cups are compatible only with BIOLOX® Delta ceramic inserts sold by Symbios.



## BIOLOX® Delta Insert

Truncated conical insert. Ceramic [Al2O3 + ZrO2-ISO 6474-2].

Sizes	Ref.	Compatible inserts	Compatible heads		
			Ø28	Ø32	Ø36
40-44/Ø28	1510 2835		•		
46-50/Ø32	1510 3239			•	
52-56/Ø36	1510 3644				•
58-64/Ø36	1510 3648				•

# APRIL<sup>®</sup>

## APRIL<sup>®</sup> Poly

Cementless pressfit acetabular cup.  
Titanium alloy [Ti6Al4V-ISO 5832-3]. Coatings: Porous titanium and hydroxyapatite.

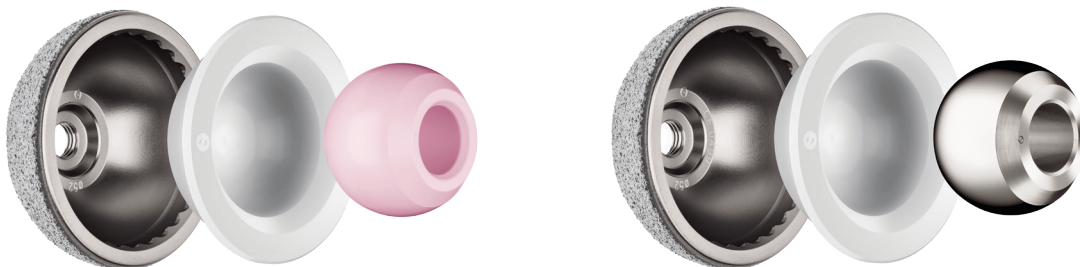


Sizes	Ref.	Compatible heads			
		Ø22.2	Ø28	Ø32	Ø36
40*	1027 4000*	•			
42*	1027 4200*	•			
44*	1027 4400*	•			
46	1027 4600		•		
48	1027 4800		•		
50	1027 5000		•	•	
52	1027 5200		•	•	
52 EXT	1027 5201				•
54	1027 5400		•	•	•
56	1027 5600		•	•	•
58	1027 5800		•	•	•
60	1027 6000		•	•	•
62	1027 6200		•	•	•
64	1027 6400		•	•	•

\*Only available upon request

## Compatibility

The APRIL<sup>®</sup> Poly acetabular cups are compatible with the INLOCK X<sup>®</sup> inserts in highly-crosslinked polyethylene.



# SERENITY®

## SERENITY®

Dual-mobility pressfit cementless cup.  
Stainless steel [M30NW-ISO 5832-9]. Coatings: Porous titanium and hydroxyapatite.



Sizes	Ref.	Head compatibility	
		ø22.2	ø28
42*	1030 4200*	•	
44*	1030 4400*	•	
46	1030 4600	•	
48	1030 4800		•
50	1030 5000		•
52	1030 5200		•
54	1030 5400		•
56	1030 5600		•
58	1030 5800		•
60	1030 6000		•
62	1030 6200		•
64	1030 6400		•

\*Only available upon request

## SERENITY® Cemented

Dual-mobility cemented cup with possible fixation in an acetabular frame.  
Stainless steel [M30NW-ISO5832-9].



Sizes	Ref.	Head compatibility	
		ø22,2	ø28
42*	1031 4200*	•	
44*	1031 4400*	•	
46	1031 4600	•	
48	1031 4800		•
50	1031 5000		•
52	1031 5200		•
54	1031 5400		•
56	1031 5600		•
58	1031 5800		•
60	1031 6000		•
62*	1031 6200*		•

\*Only available upon request

Launch of SERENITY® Cemented in the first half of 2022 with limited availability during this phase. For more information, contact your Symbios representative.



# SERENITY®

## SERENITY® Insert

Dual-mobility insert. Polyethylene (UHMWPE-ISO 5834-2).



Sizes

	ø22.2	ø28
42*	1530 4210*	
44*	1530 4410*	
46	1530 4610	
48		1530 4820
50		1530 5020
52		1530 5220
54		1530 5420
56		1530 5620
58		1530 5820
60		1530 6020
62		1530 6220
64		1530 6420

\*Only available upon request



# INLOCK X<sup>®</sup>

## INLOCK X<sup>®</sup>

Insert highly-crosslinked polyethylene.  
 (Chirulen<sup>®</sup> 1020 X-ASTM F2565).



Cup sizes	∅22.2 0°	∅22.2 10°	∅28 0°	∅28 10°	∅32 0°	∅32 10°	∅36 0°	∅36 10°
40*	1513 4010*	1513 4011*	-	-	-	-	-	-
42*	1513 4210*	1513 4211*	-	-	-	-	-	-
44*	1513 4410*	1513 4411*	-	-	-	-	-	-
46	-	-	1513 4620	1513 4621	-	-	-	-
48	-	-	1513 4820	1513 4821	-	-	-	-
50	-	-	1513 5020	1513 5021	1513 5030	1513 5031	-	-
52	-	-	1513 5220	1513 5221	1513 5230	1513 5231	-	-
52 EXT	-	-	-	-	-	-	1513 5240	1513 5241
54	-	-	1513 5420	1513 5421	1513 5430	1513 5431	1513 5440	1513 5441
56	-	-	1513 5620	1513 5621	1513 5630	1513 5631	1513 5640	1513 5641
58	-	-	1513 5820	1513 5821	1513 5830	1513 5831	1513 5840	1513 5841
60	-	-	1513 6020	1513 6021	1513 6030	1513 6031	1513 6040	1513 6041
62	-	-	1513 6220	1513 6221	1513 6230	1513 6231	1513 6240	1513 6241
64	-	-	1513 6420	1513 6421	1513 6430	1513 6431	1513 6440	1513 6441

\*Only available upon request

## Compatibility

The INLOCK X<sup>®</sup> inserts are compatible with the APRIL<sup>®</sup> Poly cup.



# Reconstruction

## Acetabular Cage

Acetabular cage with 2 symmetrical legs, 4 polyethylene (UHMWPE-ISO 5834 1-2) spacer studs positioned on the branches of the frame.

Stainless steel (M30NW-ISO 5832-1).



Sizes	External diameter	Associated cups	Reference
46	ø50	ø42-44 mm	H13 046
50	ø54	ø46-48 mm	H13 050
54	ø58	ø50-52 mm	H13 054
58	ø62	ø54-56 mm	H13 058
62	ø66	ø58-60 mm	H13 062

## Cortical Screw

Cortical screw. Stainless Steel (M30NW-ISO 5832-1). Screw diameter ø5 mm.

Sizes	Ref.	Length
L 35	H16 S5035	35 mm
L 40	H16 S5040	40 mm
L 45	H16 S5045	45 mm
L 50	H16 S5050	50 mm
L 55	H16 S5055	55 mm
L 60	H16 S5060	60 mm

## Compatibility

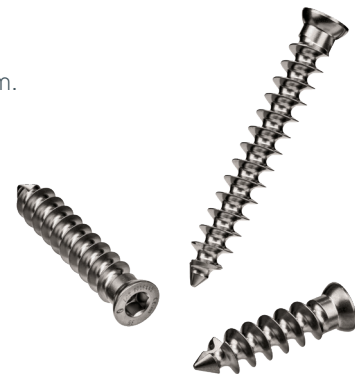
The cortical screws should only be implanted in combination with the acetabular cage.

Acetabular Cage and Cortical Screw products are manufactured by Evolutis SAS (France) and distributed by Symbios. Please check distribution availability for your market with your Symbios representative.

## Spongy Bone Screw

Spongy bone screws. Titanium alloy (Ti6Al4V-ISO 5832-3). Screw diameter ø6.5 mm.

Sizes	Ref.	Length
L 15	8001 6515	15 mm
L 20	8001 6520	20 mm
L 25	8001 6525	25 mm
L 30	8001 6530	30 mm
L 35	8001 6535	35 mm
L 40	8001 6540	40 mm
L 45	8001 6545	45 mm
L 50	8001 6550	50 mm
L 55	8001 6555	55 mm
L 60	8001 6560	60 mm



## Compatibility

The spongy screws should only be implanted in combination with Symbios cups.

## Other Cups

### Bipolar Cup

Bipolar cup with retaining safety clip.

Steel CrNi (ISO 5832-1) and polyethylene (UHMWPE-ISO 5834-2).

Sizes

	<b>ø28</b>
42	151-042
43	151-043
44	151-044
45	151-045
46	151-046
47	151-047
48	151-048
49	151-049
50	151-050
51	151-051
52	151-052
53	151-053
54	151-054
55	151-055
56	151-056
57	151-057
58	151-058



### Müller II Cup

Cemented acetabular cup.

Polyethylene (UHMWPE-ISO 5834-2).

Sizes

	<b>ø28</b>	<b>ø32</b>
44	1300-28-44	1300-32-44
46	1300-28-46	1300-32-46
48	1300-28-48	1300-32-48
50	1300-28-50	1300-32-50
52	1300-28-52	1300-32-52
54	1300-28-54	1300-32-54
56	1300-28-56	1300-32-56
58	1300-28-58	1300-32-58
60	1300-28-60	1300-32-60



Bipolar Cup and Müller II Cup products are manufactured by OHST Medizintechnik AG (Germany) and distributed by Symbios. Please check distribution availability for your market with your Symbios representative.

**KNEE**

Implant Systems



KNEE - Implant Systems



**symbios**  
custom-made for you

# ORIGIN® PS

Primary personalised knee prosthesis, posterior-stabilised; fixed platform. The ORIGIN® PS pack includes the personalised implants and single-use instrumentation for each patient.

Implants included in the ORIGIN® PS pack	Reference											
<p><b>ORIGIN® PS Femur Cemented</b></p> <p>Personalised cemented femoral component, posterior-stabilised. Cobalt-chrome [CrCoMo-ISO 5832-4].</p>	5000 1100											
<p><b>ORIGIN® PS Fixed Tibia Monobloc Cemented</b></p> <p>Personalised cemented tibial monobloc component for fixed platform, posterior-stabilised. Titanium alloy [Ti6Al4V-ISO 5832-3].</p>	5000 2100											
<p><b>ORIGIN® PS Fixed Tibia Modular Cemented</b></p> <p>Personalised cemented tibial modular component for fixed platform, posterior-stabilised. Titanium alloy [Ti6Al4V-ISO 5832-3].</p>	5000 2300											
<p><b>ORIGIN® Modular Stem</b></p> <p>Cemented modular tibial anchoring stem. Titanium alloy [Ti6Al4V-ISO 5832-3].</p> <table border="1" data-bbox="373 1285 776 1469"> <thead> <tr> <th>Sizes</th> <th>Ref.</th> </tr> </thead> <tbody> <tr> <td>20 mm</td> <td>5000 3700</td> </tr> <tr> <td>30 mm</td> <td>5000 3701</td> </tr> <tr> <td>40 mm</td> <td>5000 3702</td> </tr> <tr> <td>70 mm</td> <td>5000 3703</td> </tr> </tbody> </table>	Sizes	Ref.	20 mm	5000 3700	30 mm	5000 3701	40 mm	5000 3702	70 mm	5000 3703		
Sizes	Ref.											
20 mm	5000 3700											
30 mm	5000 3701											
40 mm	5000 3702											
70 mm	5000 3703											
<p><b>ORIGIN® PS Fixed Insert</b></p> <p>Personalised tibial fixed insert posterior-stabilised. Polyethylene [UHMWPE-ISO 5834-2].</p> <table border="1" data-bbox="305 1653 1015 1711"> <tbody> <tr> <td>Planned thickness +0 mm</td> <td>5000 3100</td> </tr> <tr> <td>Planned thickness +2 mm</td> <td>5000 3102</td> </tr> </tbody> </table>	Planned thickness +0 mm	5000 3100	Planned thickness +2 mm	5000 3102								
Planned thickness +0 mm	5000 3100											
Planned thickness +2 mm	5000 3102											

## ORIGIN® Patella Cemented

Cemented patella component with medialized dome. Polyethylene [UHMWPE-ISO 5834-2].

Sizes	Ref.
XS	5000 4101
S	5000 4102
M	5000 4103
L	5000 4104
XL	5000 4105



# ORIGIN® PS

Primary personalised knee prosthesis, posterior-stabilised; fixed platform. The ORIGIN® PS pack includes the personalised implants and single-use instrumentation for each patient.

Instruments included in the ORIGIN® PS pack	Reference	
<p><b>ORIGIN® KNEE-PLAN® Guides</b></p> <p>Femoral and tibial cut guides, personalised, delivered together with the patient's bone models. Polyamide nylon (PA2200).</p>	9005 0000	
<p><b>ORIGIN® PS Femur Set</b></p> <p>Personalised and single-use instruments for the preparation and trials of the femur. Polyamide nylon (PA2200).</p>	9005 0011	
<p><b>ORIGIN® PS Tibia Set</b></p> <p>Personalised and single-use instruments for the preparation and trials of the monobloc tibia. Polyamide nylon (PA2200).</p>	9005 0012	
<p><b>ORIGIN® PS Tibia Modular Set</b></p> <p>Personalised and single-use instruments for the preparation and trials of the modular tibia. Polyamide nylon (PA2200).</p>	9005 0013	
<p><b>ORIGIN® Impaction Set</b></p> <p>Single-use instruments allowing the impaction, preparation, and tibial recut steps. Makrolon [Rx2530].</p>	9005 00XX	

## Order information

All ORIGIN® orders must be passed through the website portal **Symbios Connect** ([www.symbios.ch/connect/](http://www.symbios.ch/connect/)) and require the transferring of a CT scan to Symbios according to the specific KNEE-PLAN® protocol. The components are delivered to the hospital within the time specified when placing an order on **Symbios Connect** and at the condition of receiving the CT images at Symbios on the due date. For more information, contact your Symbios representative.



# ORIGIN® CR

Primary personalised knee prosthesis, posterior cruciate retaining; fixed platform. The ORIGIN® CR pack includes the personalised implants and single-use instrumentation for each patient.

Implants included in the ORIGIN® CR pack	Reference											
<p><b>ORIGIN® CR Femur Cemented</b></p> <p>Personalised cemented femoral component, posterior cruciate retaining. Cobalt-chrome [CrCoMo-ISO 5832-4].</p>	5000 1300											
<p><b>ORIGIN® CR fixed Tibia Monobloc Cemented</b></p> <p>Personalised cemented tibial monobloc component for fixed platform, posterior cruciate retaining. Titanium alloy [Ti6Al4V-ISO 5832-3].</p>	5000 2700											
<p><b>ORIGIN® CR Fixed Tibia Modular Cemented</b></p> <p>Personalised cemented tibial modular component for fixed platform, posterior cruciate retaining. Titanium alloy [Ti6Al4V-ISO 5832-3].</p>	5000 2800											
<p><b>ORIGIN® Modular Stem</b></p> <p>Cemented modular tibial anchoring stem. Titanium alloy [Ti6Al4V-ISO 5832-3].</p> <table border="1" data-bbox="370 1249 769 1435"> <thead> <tr> <th>Sizes</th> <th>Ref.</th> </tr> </thead> <tbody> <tr> <td>20 mm</td> <td>5000 3700</td> </tr> <tr> <td>30 mm</td> <td>5000 3701</td> </tr> <tr> <td>40 mm</td> <td>5000 3702</td> </tr> <tr> <td>70 mm</td> <td>5000 3703</td> </tr> </tbody> </table>	Sizes	Ref.	20 mm	5000 3700	30 mm	5000 3701	40 mm	5000 3702	70 mm	5000 3703		
Sizes	Ref.											
20 mm	5000 3700											
30 mm	5000 3701											
40 mm	5000 3702											
70 mm	5000 3703											
<p><b>ORIGIN® CR Fixed Insert</b></p> <p>Personalised tibial insert with posterior cruciate retaining. Polyethylene [UHMWPE-ISO5834-2].</p> <table border="1" data-bbox="305 1666 1019 1727"> <tbody> <tr> <td>Planned thickness +0 mm</td> <td>5000 3300</td> </tr> <tr> <td>Planned thickness +2 mm</td> <td>5000 3302</td> </tr> </tbody> </table>	Planned thickness +0 mm	5000 3300	Planned thickness +2 mm	5000 3302								
Planned thickness +0 mm	5000 3300											
Planned thickness +2 mm	5000 3302											

## ORIGIN® Patella Cemented

Cemented patella component with medialized dome. Polyethylene [UHMWPE-ISO 5834-2].

Sizes	Ref.
XS	5000 4101
S	5000 4102
M	5000 4103
L	5000 4104
XL	5000 4105



# ORIGIN® CR

Primary personalised knee prosthesis, posterior cruciate retaining; fixed platform. The ORIGIN® CR pack includes the personalised implants and single-use instrumentation for each patient.

Instruments included in the ORIGIN® CR pack	Référence	
<p><b>ORIGIN® KNEE-PLAN® Guides</b></p> <p>Femoral and tibial cut guides, personalised, delivered together with the patient's bone models. Polyamide nylon (PA2200).</p>	9005 0000	
<p><b>ORIGIN® CR Femur Set</b></p> <p>Personalised and single-use instruments for the preparation and trials of the femur. Polyamide nylon (PA2200).</p>	9005 0014	
<p><b>ORIGIN® CR Tibia Set</b></p> <p>Personalised and single-use instruments for the preparation and trials of the monobloc tibia. Polyamide nylon (PA2200).</p>	9005 0015	
<p><b>ORIGIN® CR Tibia Modular Set</b></p> <p>Personalised and single-use instruments for the preparation and trials of the modular tibia. Polyamide nylon (PA2200).</p>	9005 0016	
<p><b>ORIGIN® Impaction Set</b></p> <p>Single-use instruments allowing the impaction, preparation, and tibial recut steps. Makrolon [Rx2530].</p>	9005 00XX	

## Order information

All ORIGIN® orders must be passed through the website portal **Symbios Connect** ([www.symbios.ch/connect/](http://www.symbios.ch/connect/)) and require the transferring of a CT scan to Symbios according to the specific KNEE-PLAN® protocol. The components are delivered to the hospital within the time specified when placing an order on **Symbios Connect** and at the condition of receiving the CT images at Symbios on the due date. For more information, contact your Symbios representative.

# FIRST Fixed

Primary knee prosthesis, posterior-stabilised and ultra-congruent ; fixed platform.



## FIRST Femur Cemented

Cemented femoral component.

Cobalt-chrome [CoCrMo-ISO 5832-4].

Sizes	Right (R)	Left (L)	Compatible inserts
F1	5002 1021	5002 1031	AB
F2	5002 1022	5002 1032	AB
F3	5002 1023	5002 1033	ABC
F4	5002 1024	5002 1034	BC
F5	5002 1025	5002 1035	BC
F6	5002 1026	5002 1036	BC



## FIRST Femur Cementless

Cementless femoral component.

Cobalt-chrome [CoCrMo-ISO 5832-4]. Coatings : Porous titanium and hydroxyapatite.

Sizes	Right (R)	Left (L)	Compatible inserts
F1	5004 1021	5004 1031	AB
F2	5004 1022	5004 1032	AB
F3	5004 1023	5004 1033	ABC
F4	5004 1024	5004 1034	BC
F5	5004 1025	5004 1035	BC
F6	5004 1026	5004 1036	BC



# FIRST Fixed

## FIRST Fixed Insert

Tibial fixed insert. Polyethylene [UHMWPE-ISO 5834-2].



Width A (small)		
5007 3001	A10	10 mm
5007 3002	A11	11 mm
5007 3003	A12	12 mm
5007 3004	A15	15 mm
5007 3005	A17	17 mm

Width B (medium)		
5007 3011	B10	10 mm
5007 3012	B11	11 mm
5007 3013	B12	12 mm
5007 3014	B15	15 mm
5007 3015	B17	17 mm

Width C (large)		
5007 3021	C10	10 mm
5007 3022	C11	11 mm
5007 3023	C12	12 mm
5007 3024	C15	15 mm
5007 3025	C17	17 mm



## FIRST Fixed Tibia Monobloc Cemented

Cemented monobloc tibial component for fixed platform. Titanium alloy [Ti6Al4V-ISO 5832-3].

Sizes	Ref.	Compatible inserts
T1	5008 2100	A
T2	5008 2200	A
T3	5008 2300	B
T4	5008 2400	B
T5	5008 2500	C
T6	5008 2600	C



## FIRST Fixed Tibia Monobloc Cementless

Cementless monobloc tibial component for fixed platform. Titanium alloy [Ti6Al4V-ISO 5832-3].  
Coatings: Porous titanium and hydroxyapatite.

Sizes	Ref.	Compatible inserts
T1	5009 2100	A
T2	5009 2200	A
T3	5009 2300	B
T4	5009 2400	B
T5	5009 2500	C
T6	5009 2600	C

## FIRST Patella

Cemented patella component. Polyethylene [UHMWPE-ISO 5834-2].

Sizes	Ref.	Compatible femurs
S	5002 4100	1-2-3
M	5002 4200	1-2-3
L	5002 4300	3-4-5-6
XL	5002 4400	3-4-5-6



# FIRST Mobile

Primary knee prosthesis, posterior-stabilised and ultra-congruent ; mobile platform.



## FIRST Femur Cemented

Cemented femoral component.

Cobalt-chrome [CoCrMo-ISO 5832-4].

Sizes	Right (R)	Left (L)	Compatible inserts
F1	5002 1021	5002 1031	AB
F2	5002 1022	5002 1032	AB
F3	5002 1023	5002 1033	ABC
F4	5002 1024	5002 1034	BC
F5	5002 1025	5002 1035	BC
F6	5002 1026	5002 1036	BC



## FIRST Femur Cementless

Cementless femoral component.

Cobalt-chrome [CoCrMo-ISO 5832-4]. Coatings : Porous titanium and hydroxyapatite.

Sizes	Right (R)	Left (L)	Compatible inserts
F1	5004 1021	5004 1031	AB
F2	5004 1022	5004 1032	AB
F3	5004 1023	5004 1033	ABC
F4	5004 1024	5004 1034	BC
F5	5004 1025	5004 1035	BC
F6	5004 1026	5004 1036	BC

# FIRST Mobile

## FIRST Mobile Insert

Tibial mobile insert. Polyethylene (UHMWPE-ISO 5834-2).



Width A (small)			Width B (medium)			Width C (large)		
5002 3031	A10	10 mm	5002 3041	B10	10 mm	5002 3051	C10	10 mm
5002 3032	A11	11 mm	5002 3042	B11	11 mm	5002 3052	C11	11 mm
5002 3033	A12	12 mm	5002 3043	B12	12 mm	5002 3053	C12	12 mm
5002 3034	A15	15 mm	5002 3044	B15	15 mm	5002 3054	C15	15 mm
5002 3035	A17	17 mm	5002 3045	B17	17 mm	5002 3055	C17	17 mm



## FIRST Mobile Tibia Monobloc Cemented

Cemented monobloc tibial component for mobile platform. Cobalt-chrome [CoCrMo-ISO 5832-4].

Sizes	Ref.	Compatible inserts
T1	5005 2100	A
T2	5005 2200	A
T3	5005 2300	B
T4	5005 2400	B
T5	5005 2500	C
T6	5005 2600	C



## FIRST Mobile Tibia Monobloc Cementless

Cementless monobloc tibial component for mobile platform. Cobalt-chrome [CoCrMo-ISO 5832-4].  
Coatings: Porous titanium and hydroxyapatite.

Sizes	Ref.	Compatible inserts
T1	5006 2100	A
T2	5006 2200	A
T3	5006 2300	B
T4	5006 2400	B
T5	5006 2500	C
T6	5006 2600	C

## Tibial Guide Pin Monobloc

Screw required for the use of FIRST Mobile 15 and 17 mm inserts with the tibial component FIRST Mobile Tibia Monobloc. Cobalt-chrome [CoCrMo-ISO 5832-12].

5002 6300	Tibial Guide Pin Monobloc Ext. 15-17
-----------	--------------------------------------



# FIRST Mobile



## FIRST Mobile Tibia Modular Cemented

Cemented modular tibial component for mobile platform. Cobalt-chrome [CoCrMo-ISO 5832-4].

Sizes	Ref.	Compatible inserts
T1	5002 2100	A
T2	5002 2200	A
T3	5002 2300	B
T4	5002 2400	B
T5	5002 2500	C
T6	5002 2600	C



## Knee Modular Stem

Modular femoral and tibial anchoring stem. Cobalt-chrome [CoCrMo-ISO 5832-4 or ISO 5832-12].

Sizes	Ref.	Length
Short Straight	5002 5100	12 mm
Long Straight	5002 5200	70 mm
Medium Straight	5002 5400	40 mm

## Tibial Guide Pin Modular

Screw required for assembly of the tibial component FIRST Mobile Tibia Modular Cemented with the modular anchoring stems Knee Modular Stem.

Cobalt-chrome [CoCrMo-ISO 5832-12].

Sizes	Ref.	Compatible inserts
Short	5002 6100	Mobile: 10-11-12 mm
Long	5002 6200	Mobile: 15-17 mm REV Mobile: 10-11-12-15-17 mm



## FIRST Patella

Cemented patella component. Polyethylene [UHMWPE-ISO 5834-2].

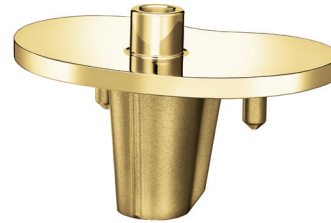
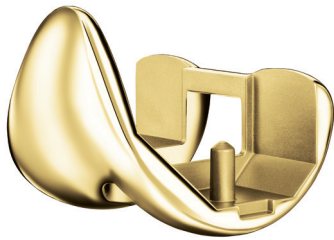
Sizes	Ref.	Compatible femurs
S	5002 4100	1-2-3
M	5002 4200	1-2-3
L	5002 4300	3-4-5-6
XL	5002 4400	3-4-5-6



# FIRST Sensitive

Primary knee prosthesis, posterior-stabilised and ultra-congruent ; mobile platform.

Reduces allergy risk for ions [Co, Cr, Ni].



## FIRST Sensitive Femur Cemented

Cemented femoral component.

Cobalt-chrome [CoCrMo-ISO 5832-4], titanium nitride niobium coating [TiNbN].

Sizes	Right (R)	Left (L)	Compatible inserts
F1	5010 1021	5010 1031	AB
F2	5010 1022	5010 1032	AB
F3	5010 1023	5010 1033	ABC
F4	5010 1024	5010 1034	BC
F5	5010 1025	5010 1035	BC
F6	5010 1026	5010 1036	BC

## FIRST Sensitive Mobile Tibia Monobloc Cemented

Cemented monobloc tibial component for mobile platform. Cobalt-chrome [CoCrMo-ISO 5832-4], titanium nitride niobium coating [TiNbN].

Sizes	Ref.	Compatible inserts
T1	5012 2100	A
T2	5012 2200	A
T3	5012 2300	B
T4	5012 2400	B
T5	5012 2500	C
T6	5012 2600	C

## Sensitive Tibial Guide Pin Monobloc

Screw required for the use of FIRST Mobile 15 and 17 mm inserts with the tibial component FIRST Sensitive Mobile Tibia Monobloc Cemented.

Cobalt-chrome [CoCrMo-ISO 5832-12], titanium nitride niobium coating [TiNbN].



5012 6300	Sensitive Tibial Guide Pin Monobloc Ext. 15-17
-----------	--

## FIRST Mobile Insert

Tibial mobile insert. Polyethylene (UHMWPE-ISO 5834-2).

Width A (small)			Width B (medium)			Width C (large)		
5002 3031	A10	10 mm	5002 3041	B10	10 mm	5002 3051	C10	10 mm
5002 3032	A11	11 mm	5002 3042	B11	11 mm	5002 3052	C11	11 mm
5002 3033	A12	12 mm	5002 3043	B12	12 mm	5002 3053	C12	12 mm
5002 3034	A15	15 mm	5002 3044	B15	15 mm	5002 3054	C15	15 mm
5002 3035	A17	17 mm	5002 3045	B17	17 mm	5002 3055	C17	17 mm



## FIRST Patella

Cemented patella component. Polyethylene (UHMWPE-ISO 5834-2).

Sizes	Ref.	Compatible femurs
S	5002 4100	1-2-3
M	5002 4200	1-2-3
L	5002 4300	3-4-5-6
XL	5002 4400	3-4-5-6



# FIRST REV

Prosthesis with augmented stability, for unstable cases.  
 Posterior-stabilised and ultra-congruent ; mobile platform.



## FIRST REV Femur Cemented

Cemented constrained femoral component.  
 Cobalt-chrome [CoCrMo-ISO 5832-4].  
 Knee Modular Stem Locking Screw included.  
 Cobalt-chrome [CoCrMo-ISO 5832-12].

Sizes	Right (R)	Left (L)	Compatible inserts
F1	5003 1001	5003 1011	AB
F2	5003 1002	5003 1012	AB
F3	5003 1003	5003 1013	ABC
F4	5003 1004	5003 1014	BC
F5	5003 1005	5003 1015	BC



## FIRST Patella

Cemented patella component.  
 Polyethylene [UHMWPE-ISO 5834-2].

Sizes	Ref.	Compatible femurs
S	5002 4100	1-2-3
M	5002 4200	1-2-3
L	5002 4300	3-4-5-6
XL	5002 4400	3-4-5-6

# FIRST REV



## FIRST REV Mobile Insert

Tibial mobile insert with augmented constraint. Polyethylene [UHMWPE-ISO 5834-2].

Width A (small)			Width B (medium)			Width C (large)		
5003 3001	A10	10 mm	5003 3011	B10	10 mm	5003 3021	C10	10 mm
5003 3002	A11	11 mm	5003 3012	B11	11 mm	5003 3022	C11	11 mm
5003 3003	A12	12 mm	5003 3013	B12	12 mm	5003 3023	C12	12 mm
5003 3004	A15	15 mm	5003 3014	B15	15 mm	5003 3024	C15	15 mm
5003 3005	A17	17 mm	5003 3015	B17	17 mm	5003 3025	C17	17 mm



## FIRST Mobile Tibia Modular Cemented

Cemented modular tibial component for mobile platform. Cobalt-chrome [CoCrMo-ISO 5832-4].

Sizes	Ref.	Compatible inserts
T1	5002 2100	A
T2	5002 2200	A
T3	5002 2300	B
T4	5002 2400	B
T5	5002 2500	C
T6	5002 2600	C



## Knee Modular Stem

Modular femoral and tibial anchoring stem. Cobalt-chrome [CoCrMo-ISO 5832-4 or ISO 5832-12].

Sizes	Ref.	Length
Short Straight	5002 5100	12 mm
Long Straight	5002 5200	70 mm
Medium Straight	5002 5400	40 mm

## Tibial Guide Pin Modular

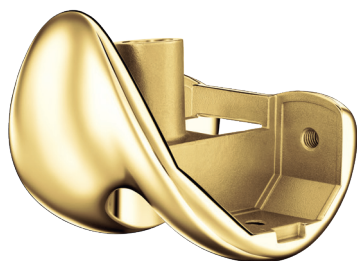
Screw required for assembly of the tibial component FIRST Mobile Tibia Modular Cemented with the modular anchoring stems Knee Modular Stem. Cobalt-chrome [CoCrMo-ISO 5832-12].

Sizes	Ref.	Compatible inserts
Long	5002 6200	REV Mobile: 10-11-12-15-17 mm



# FIRST REV Sensitive

Prosthesis with augmented stability, for unstable cases.  
 Posterior-stabilised and ultra-congruent ; mobile platform.  
 Reduces allergy risk for ions [Co, Cr, Ni].



## FIRST REV Sensitive Femur Cemented

Cemented constrained femoral component.  
 Cobalt-chrome [CoCrMo-ISO 5832-4], titanium nitride niobium coating (TiNbN).  
 Sensitive Knee Modular Stem Locking Screw included.  
 Cobalt-chrome [CoCrMo-ISO 5832-12], titanium nitride niobium coating (TiNbN).

Sizes	Right (R)	Left (L)	Compatible inserts
F1	5015 1021	5015 1031	AB
F2	5015 1022	5015 1032	AB
F3	5015 1023	5015 1033	ABC
F4	5015 1024	5015 1034	BC
F5	5015 1025	5015 1035	BC



## Sensitive Tibial Guide Pin Modular

Screw required for assembly of the tibial component FIRST Sensitive Mobile Tibia Modular Cemented with the modular anchoring stems Sensitive Knee Modular Stem. Cobalt-chrome [CoCrMo-ISO 5832-12], titanium nitride niobium coating (TiNbN).

Sizes	Ref.	Compatible inserts
Long	5010 6200	REV Mobile: 10-11-12-15-17 mm
Short	5010 6100	Mobile: 10-11-12 mm



## FIRST Sensitive Mobile Tibia Modular Cemented

Cemented modular tibial component for mobile platform. Cobalt-chrome [CoCrMo-ISO 5832-4], titanium nitride niobium coating (TiNbN).

Sizes	Ref.	Compatible inserts
T1	5010 2100	A
T2	5010 2200	A
T3	5010 2300	B
T4	5010 2400	B
T5	5010 2500	C
T6	5010 2600	C



## Sensitive Knee Modular Stem

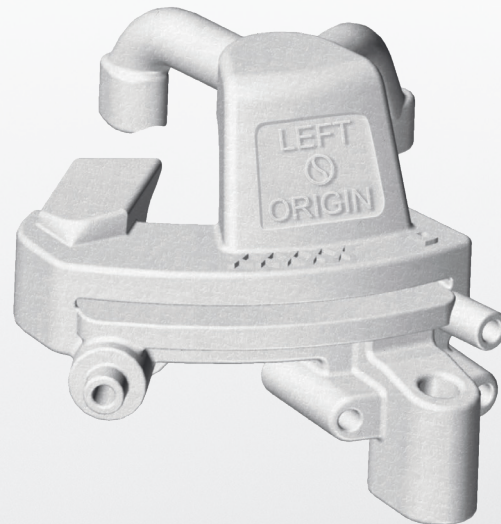
Modular femoral and tibial anchoring stem.  
 Cobalt-chrome [CoCrMo-ISO 5832-4 or ISO 5832-12], titanium nitride niobium coating (TiNbN).

Sizes	Ref.	Length
Short Straight	5010 5100	12 mm
Long Straight	5010 5200	70 mm
Medium Straight	5010 5400	40 mm



# KNEE

## Single-Use Ancillaries



 **symbios**  
custom-made for you

# FIRST KNEE-PLAN®

Personalised cutting guides and single-use instrumentation.

---

9000 0000      FIRST KNEE-PLAN® Guides

---

Includes only personalised guides with bone models. Requires the use of FIRST instrumentation for the surgical procedure.




---

9000 6000      FIRST KNEE-PLAN® Set

---

Includes personalised guides, bone models and complete single-use instrumentation to carry out the entire surgical procedure.



## Order information

All KNEE-PLAN® orders must be passed through the website portal **Symbios Connect** ([www.symbios.ch/connect/](http://www.symbios.ch/connect/)) and require the transferring of a CT scan to Symbios according to the specific KNEE-PLAN® protocol. The components are delivered to the hospital within the time specified when placing an order on **Symbios Connect** and at the condition of receiving the CT images at Symbios on the due date. For more information, contact your Symbios representative.

## Compatibility

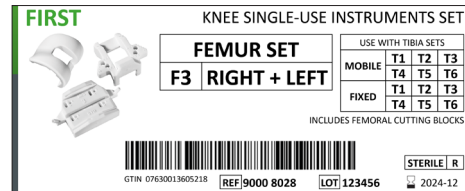
KNEE-PLAN® instrumentation is compatible with all FIRST prostheses.

# FIRST Single-Use Instruments

FIRST single-use instruments are divided into standard instrument sets that are consigned to the hospital, and which allow completion of the entire surgery in cases where the FIRST KNEE-PLAN® Set was not delivered or if there is a deviation from the planning.

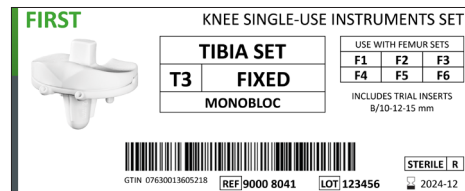
## FIRST Single-Use Femur Set

9000 8026	FIRST Single-Use Femur Set F1
9000 8027	FIRST Single-Use Femur Set F2
9000 8028	FIRST Single-Use Femur Set F3
9000 8029	FIRST Single-Use Femur Set F4
9000 8030	FIRST Single-Use Femur Set F5
9000 8031	FIRST Single-Use Femur Set F6



## FIRST Fixed Single-Use Tibia Set

9000 8039	FIRST Fixed Single-Use Tibia Set T1
9000 8040	FIRST Fixed Single-Use Tibia Set T2
9000 8041	FIRST Fixed Single-Use Tibia Set T3
9000 8042	FIRST Fixed Single-Use Tibia Set T4
9000 8043	FIRST Fixed Single-Use Tibia Set T5
9000 8044	FIRST Fixed Single-Use Tibia Set T6



## FIRST Mobile Single-Use Tibia Set

9000 8033	FIRST Mobile Single-Use Tibia Set T1
9000 8034	FIRST Mobile Single-Use Tibia Set T2
9000 8035	FIRST Mobile Single-Use Tibia Set T3
9000 8036	FIRST Mobile Single-Use Tibia Set T4
9000 8037	FIRST Mobile Single-Use Tibia Set T5
9000 8038	FIRST Mobile Single-Use Tibia Set T6



## FIRST Single-Use Tools Set

9000 8032	FIRST Single-Use Tools Set
-----------	----------------------------





# CEMENTS AND ACCESSORIES



 **symbios**  
custom-made for you



# Cements

## Arthrocem

Sterile, radiopaque acrylic and self-hardening cement for orthopaedic cementation (ISO 5833).

### With antibiotic

040140GC	Arthrocem 1G	40 g, standard viscosity, malleable
040340GC	Arthrocem 3G	40 g, low viscosity, injectable
040341GC	Arthrocem 3MV	40 g, medium viscosity, injectable

### Without antibiotic

040140C	Arthrocem 1	40 g, high viscosity, malleable
040340C	Arthrocem 3	40 g, low viscosity, injectable



## CemP

Biodegradable flexible cement restrictor.

Sizes	Ref.
ø8 mm	T770308
ø10 mm	T770310
ø12 mm	T770312
ø14 mm	T77314
ø16 mm	T770316
ø18 mm	T770318



# Accessories

## Saw Blades

Komet saw blades delivered sterile and single-use.

Powered instruments	Dimensions	Ref.
ConMed/Hall Linvatec	90 mm x 25.4 mm x 1.27 mm	KMS2513.05S
	90 mm x 25.4 mm x 1.37 mm	KMS2514.05T
De Soutter	90 mm x 25.4 mm x 1.27 mm	KMS2513.15S
	90 mm x 25.4 mm x 1.37 mm	KMS2514.15T
DePuy Synthes	90 mm x 25.4 mm x 1.27 mm	KMS2513.55S
	90 mm x 25.4 mm x 1.37 mm	KMS2514.55T
Stryker	90 mm x 25.4 mm x 1.27 mm	KMS2513.M62
	90 mm x 25.4 mm x 1.37 mm	KMS2514.M62

Product manufactured by Komet Medical (Germany) and distributed by Symbios. Please check distribution availability for your market with your Symbios representative.







# INSTRUMENTATIONS

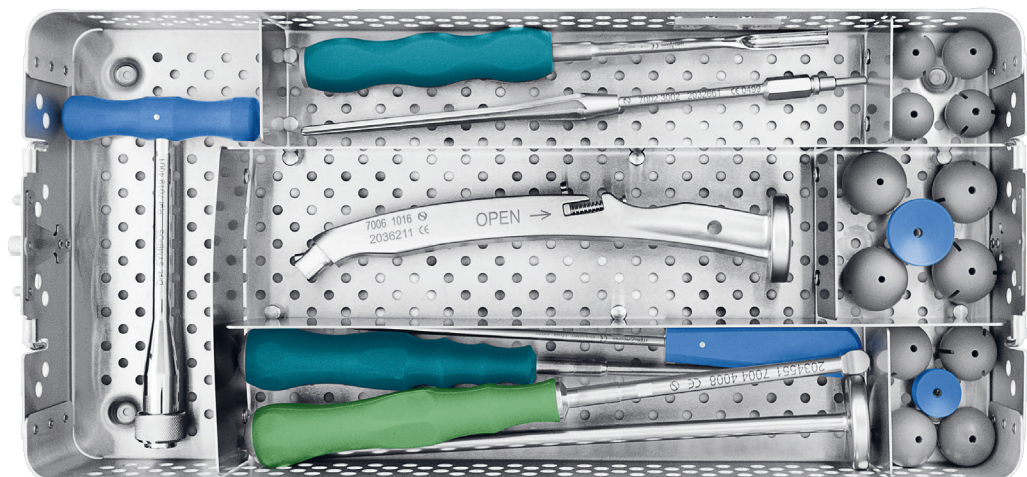


 **symbios**  
custom-made for you







# Stem Instrumentation

Instrumentation for SPS® and HARMONY® stems with modular rasps.

7001 0000 Standard stems instrumentation – modular rasps



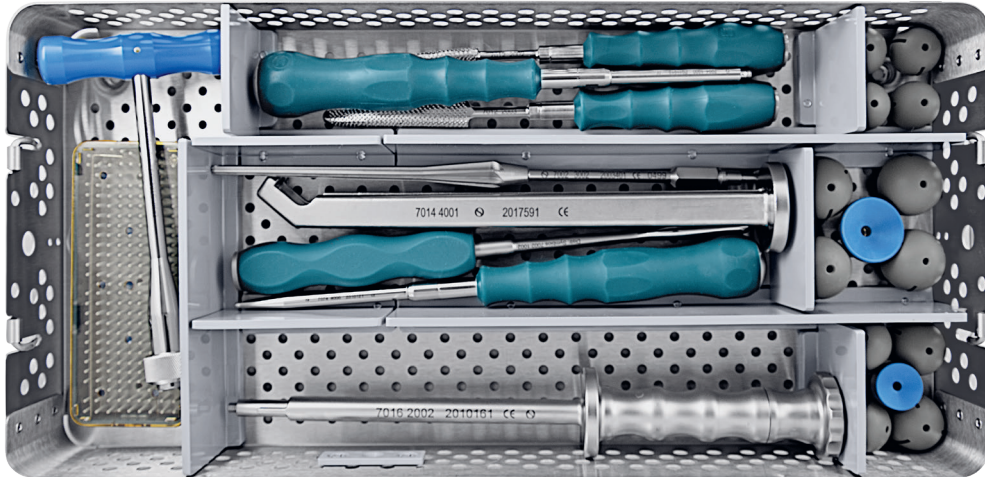
## Deposit options and complements

7006 1013 Double offset rasp handle displaced to the right	7006 1015 Modular Hueter rasp handle
7006 1014 Double offset rasp handle displaced to the left	
	7006 1012 Modular screwed rasp handle
7006 1008 Modular rasp handle displaced to the right	
7006 1009 Modular rasp handle displaced to the left	7004 4013 Box chisel
	
7006 1006 Modular curved rasp handle	
	



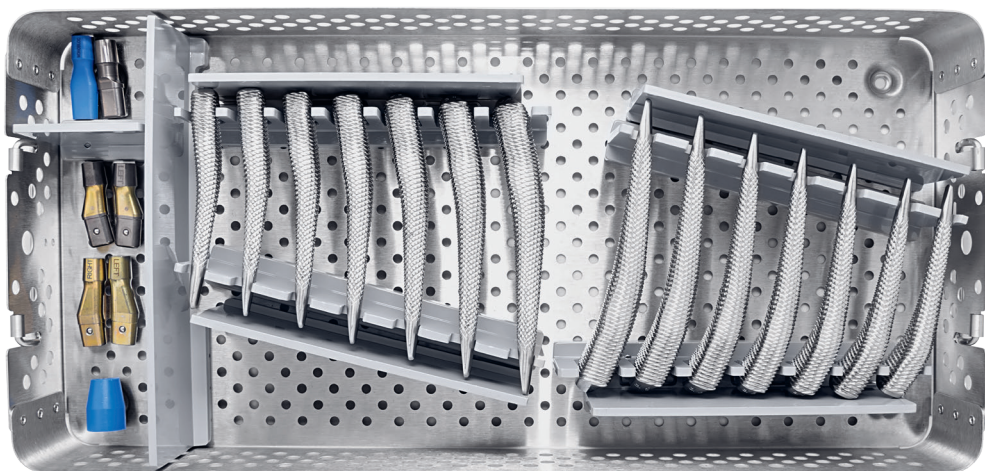
# INDIVIDUAL HIP®

7011 0000 INDIVIDUAL HIP® instrumentation



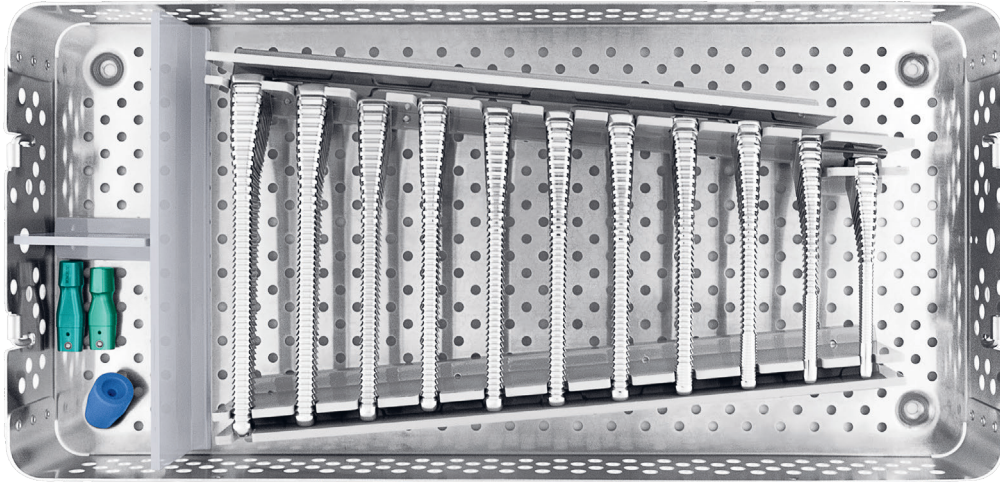
# SPS®

7071 0000 SPS® rasps instrumentation



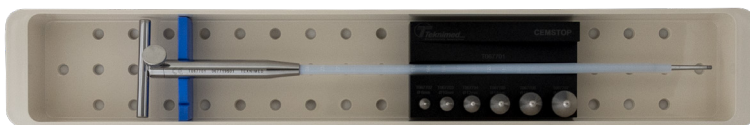
# HARMONY®

7091 0000 HARMONY® rasps instrumentation



## Deposit options and complements

T067750 Cemstop® Set

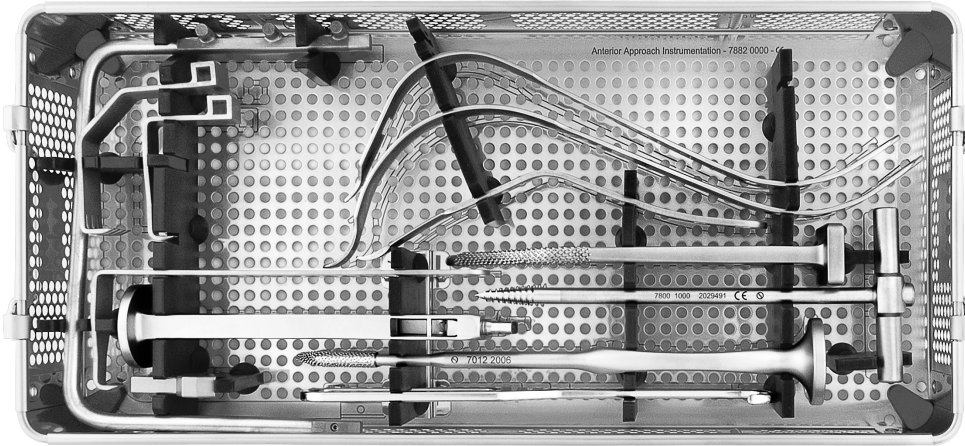


Product manufactured by Teknimed S.A. (France) and distributed by Symbios.

**Important:** The Cemstop® Set has to be ordered in the case of a cemented stem.

# Anterior Approach Instrumentation

7882 0000 Anterior approach kit

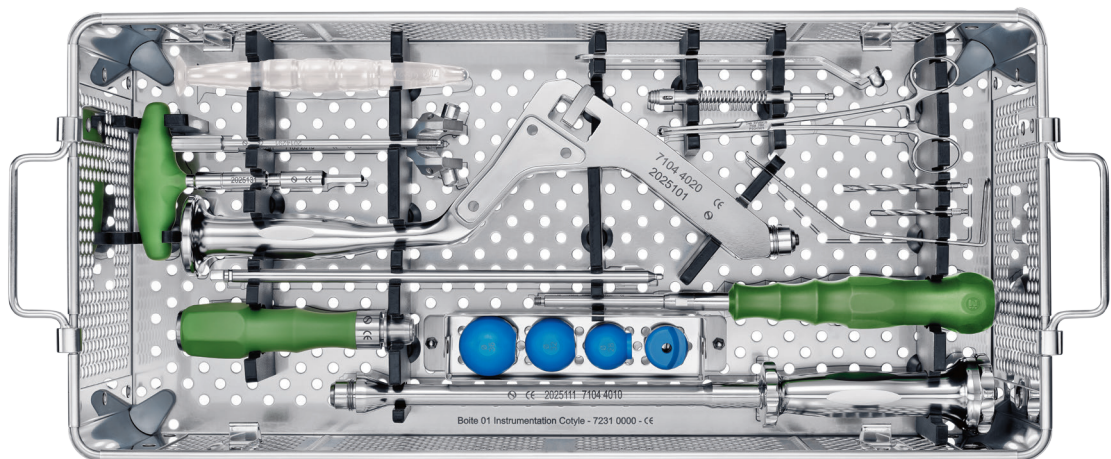
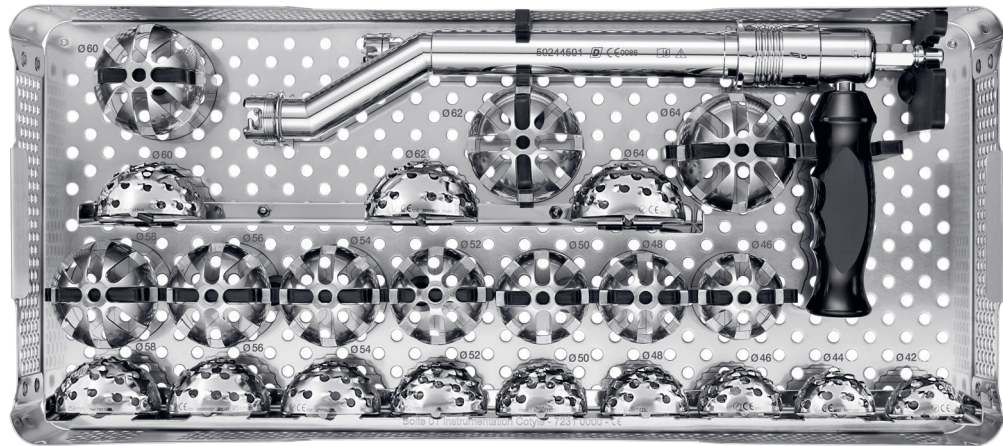




# Cup Instrumentation

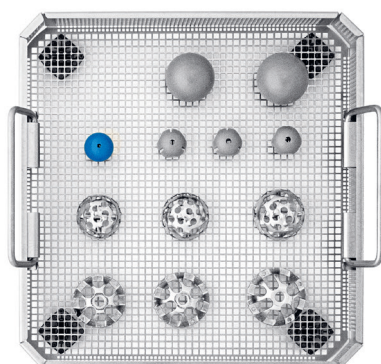
Instrumentation for all Symbios cups systems.

7231 0000 Cup instrumentation



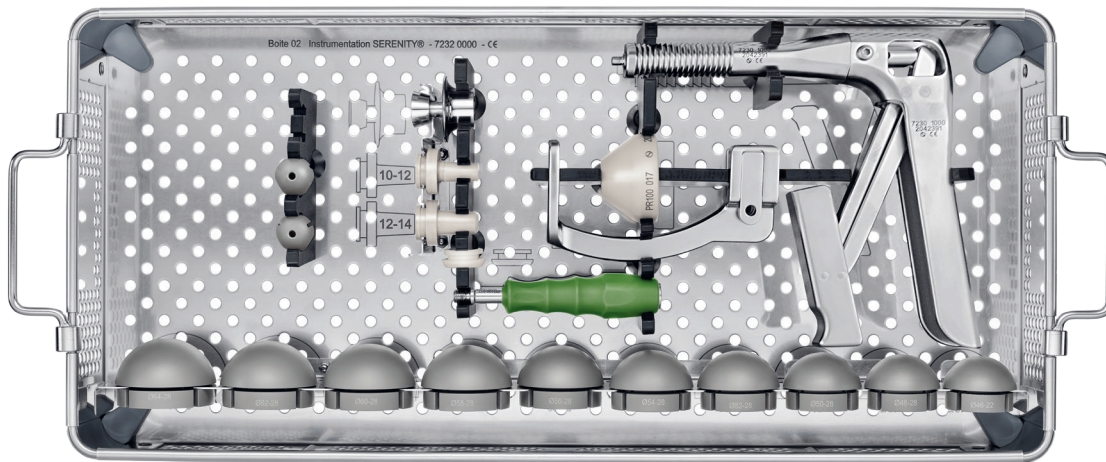
## Supplement when sending kit

7310 0000 Small reamers instrumentation  $\varnothing$ 36 - 40 mm

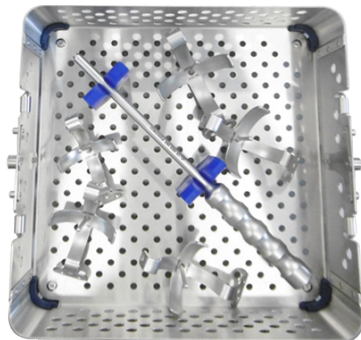


# SERENITY®

7232 0000 SERENITY® Add-On instrumentation



H03 9102 Acetabular cage instrumentation

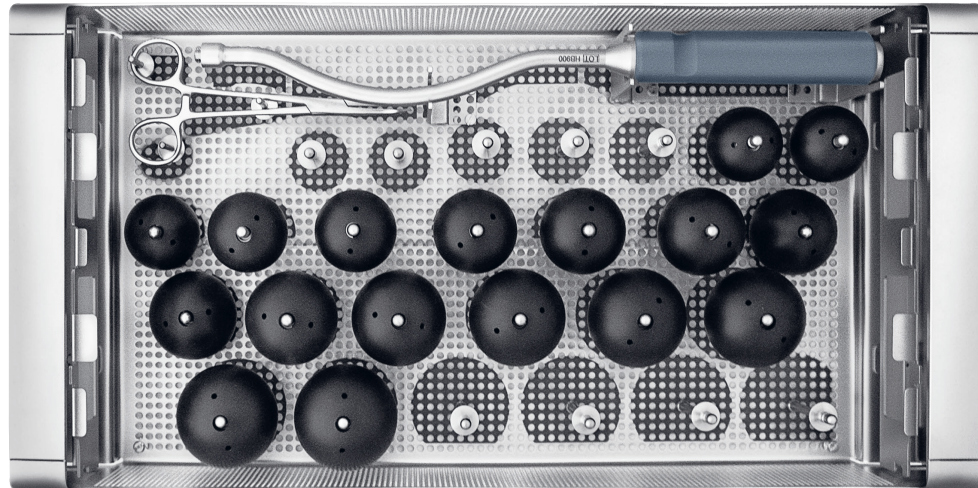


Product manufactured by Evolutis SAS (France) and distributed by Symbios.



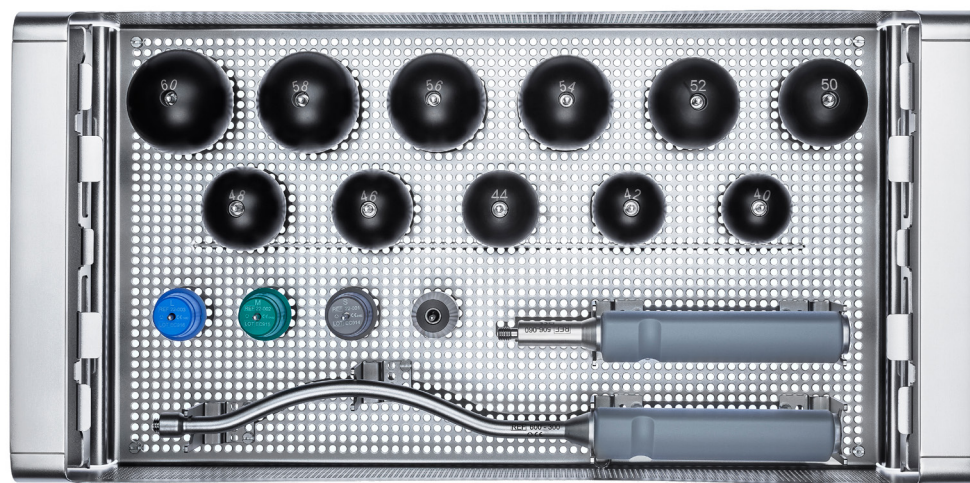
# Bipolar Cup

7104 9010 Bipolar cup instrumentation



# Unipolar Head

7251 0000 Hemi femoral head instrumentation

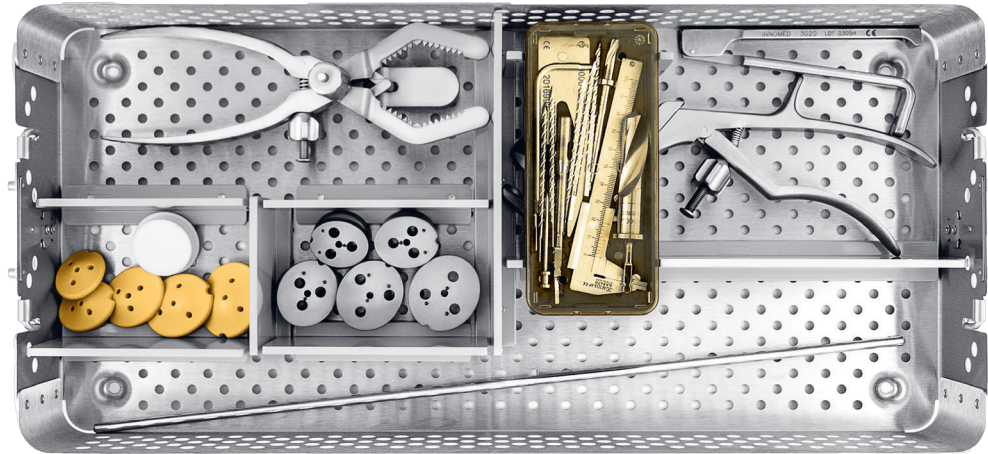


Bipolar Cup and Unipolar Head instrumentations are manufactured by OHST Medizintechnik AG (Germany) and distributed by Symbios. Please check distribution availability for your market with your Symbios representative.



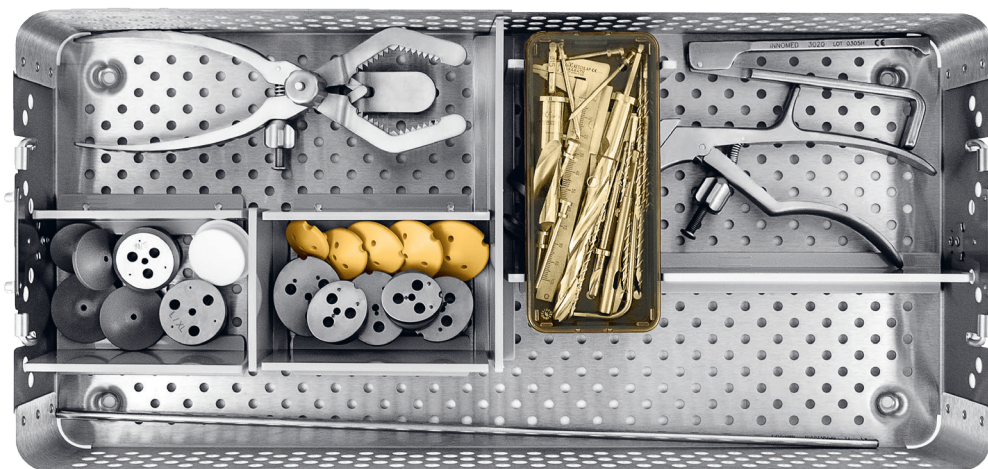
# ORIGIN<sup>®</sup>

9509 0000 ORIGIN<sup>®</sup> instrumentation



# FIRST KNEE-PLAN<sup>®</sup> Set / ORIGIN<sup>®</sup>

9505 0000 FIRST KNEE-PLAN<sup>®</sup> Set / ORIGIN<sup>®</sup> Add-On instrumentation







### **Symbios**

Avenue des Sciences 1  
1400 Yverdon-les-Bains  
Switzerland  
T +41 24 424 26 26  
F +41 24 424 26 27

### **Symbios France**

14 rue d'Arsonval  
69680 Chassieu  
France  
T +33 4 72 37 08 26  
F +33 4 78 41 03 92

### **Symbios Deutschland**

Justus-Liebig-Str. 3 C  
55129 Mainz  
Deutschland  
T +49 6131 277 29 40  
F +49 6131 277 29 49

### **Symbios UK**

Unit 2, Silverdown Office Park  
Fair Oak Close, Clyst Honiton  
Exeter, Devon  
EX5 2UX, United Kingdom  
T +44 1 392 365 884  
F +44 1 392 365 885

### **Symbios Österreich**

c/o CCFA  
Am Heumarkt 10  
1030 Wien  
Österreich  
T +43 664 111 44 66  
F +41 24 424 26 27

[www.symbios.ch](http://www.symbios.ch)



SPS®, HARMONY®, INDIVIDUAL HIP®, SERENITY®, APRIL®, INLOCK X®, HIP-PLAN®, ORIGIN®, KNEE-PLAN®, and SYMBIOS® are registered trademarks of Symbios Orthopédie S.A., Switzerland.  
BILOX® is a registered trademark of Ceramtec AG, Germany.  
STEMSYS® is a registered trademark of Evolutis SAS, France.  
CEMSTOP® is a registered trademark of Teknimed S.A., France.

The products presented in this document may only be used by specialist physicians at their own responsibility.

All information contained in this brochure may be subject to alteration at any time.