

PETRI**S**WISS PS200/400



PetriDish Filling Device

- Ideal for filling 90mm Petri Dishes
- UV-lamp integrated
- Low pulsation by 10-roller pump head
- Large diameter double tubings
- Adjustable speed
- Removable PetriRack system for safe & easy handling
- Easy to use, clean and calibrate
- True walk away system

PETRI^SWISS PS200 / PS400

The unique PetriSwiss PS200/400 is a fully automatic and precise Petri Dish filling system, "made in Switzerland", of the most recent generation. With PS200 unique removable racks there is no waiting time until the agar is solidified in order to un- and reload the carousel. 180 plates true walk-away system with reload at anytime.

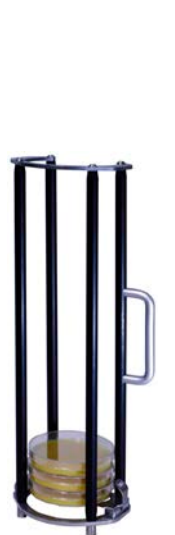
Its integrated peristaltic unique double-head 10-roller pump head guarantees low pulsation flowrate and gentle media transport. Large diameter filling tube allows filling at lower temperature, which eventually has a direct effect on solidification time.

Due to its piston driven plate processing plates containing an aliquot can be processed and mixed by the wave-movement.

Optional ink-jet printer integration is available (various brands).



The PS400 is a batch system, offering 360 plates capacity, true walk-away system, while plates are filled under UV light condition.



PS200 PetriRack



PS200 Easy handling



PS200 Pump head and filling chamber



PS400 dish loading

PETRI^{SWISS} PS200 / PS400

- Rapid filling of 180 plates in approx. 20 min (800 plates/h)
- Rapid filling of 360 plates in approx. 40 min (800 plates/h)
- Color touchscreen, backlighting for perfect read-off, icons
- Buttons integrated quick start/stop/pump
- Dosing quantities, speed, pause and AntiDrop function
- 1-99 ml dosing range
- 3 different separators to meet sizes 89.8 – 94.4 mm
- Blood agar processing possible
- Optional second pump connection for blood agar
- RS232

Ideal for:

- Microbiology laboratories
- research and development
- pharmaceutical industry
- hospitals
- food industry and
- universities



Dimensions

	PS200	PS400
Width (mm)	660 (680 with hinges)	660 (680 with hinges)
Depth (mm)	360 (net w/o cable)	360 (net w/o cable)
Height (mm)	320 (unit body) 730 (with PetriRacks)	320 (unit body) 1065 (with carousel)
Net weight (kg)	52.4 (complete with 10 PetriRacks)	58.0 (with carousel)



Performance

	PS200	PS400
Dish/h	800	800
Dish load capacity	200	400
Filling speed ml/min	up to 800	up to 800



PS200 sequential process



PETRI^SWISS PS200 / PS400

Technical data

Mains connections	85-132 V AC / 176-264 V AC, 47-63 Hz
Mains fuse	3.15 A / 250 V AC slow-blow
Dosing range	1.0 - 99.9 ml, resolution 0.1 ml
Dosing accuracy	1 - 2% (depending on selected tube, calibration e.g.)
Dosing speed	5 -80 ml/min (with standard double tube set)
Variable pause between doses	0.0 - 9.9 seconds
Anti Drop	0 - 90° Auto-reverse angle of pump head
Display	Color touchscreen, backlighting for perfect read-off, icons
Sound pressure level	<79 dB(A)
Pollution severity	II
Safety class	IP 64
Ambient temperature	+5°C to 45°C (also during transport)
Unit support surface	Sturdy support surface
Remote control / footswitch (2)	footswitch contacts are designed as normally open contacts (NO)
Interface RS232	RS 232 (host and printer)
Interface RS 485 (option)	RS 485 Bio Link (lab. instruments)

Items

950000	PetriSwiss PS200, 90mm, complete including 10 PetriRack's	1 ea
960000	PetriSwiss PS400, 90mm, complete including PetriTower	1 ea
903030	PetriRack individual	1 ea
179095	Double tubing set (8x12mm) with nozzle	1 ea
903222	UV lamp, bulb, 254.7nm for PS200/400	1 ea



3 different separators

CE



Your local dealer