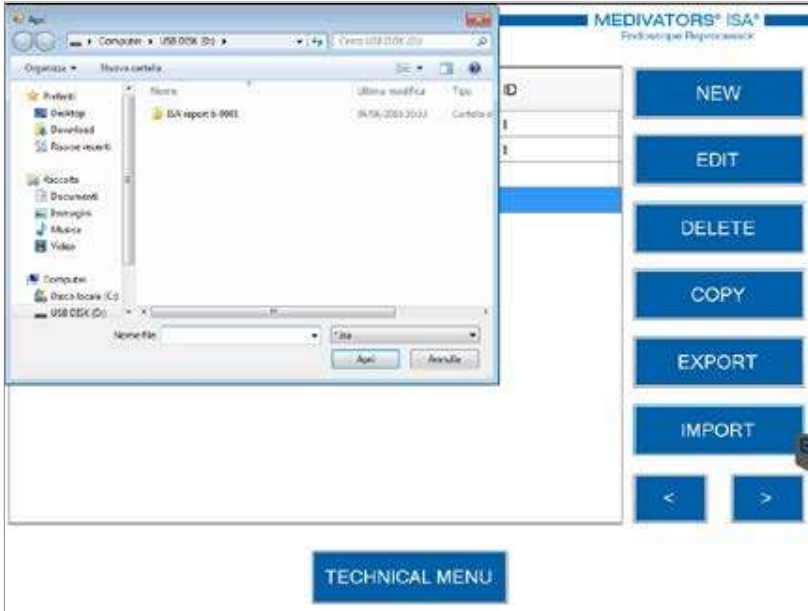


It means that you can load the endoscopes from an internal database, divided by Brand, Category and Model:

The interface consists of four sequential screens:

- Screen 1:** Shows the initial selection menu. The 'BRAND' dropdown is set to '(Any Dilator Manufacturer)'. The 'CATEGORY' dropdown is empty. The 'MODEL' dropdown is empty. A 'DATABASE' list shows various manufacturers including Olympus, Pentax, and Stryker.
- Screen 2:** The 'BRAND' dropdown is set to 'Olympus'. The 'CATEGORY' dropdown is empty. The 'MODEL' dropdown is empty. The 'DATABASE' list is filtered to show only Olympus categories such as 'Airway Mobilescopes', 'Bronchoscope', and 'Gastroscope'.
- Screen 3:** The 'BRAND' dropdown is 'Olympus' and the 'CATEGORY' dropdown is 'Gastroscope'. The 'MODEL' dropdown is empty. The 'DATABASE' list is filtered to show specific Olympus gastroscope models like 'GIF-P230', 'GIF-P30', and 'GIF-Q165'.
- Screen 4:** The 'BRAND' dropdown is 'Olympus', the 'CATEGORY' dropdown is 'Gastroscope', and the 'MODEL' dropdown is 'GIF-Q165'. The 'DATABASE' list is empty, and the text 'DATABASE VERSION: 1.2' is displayed.

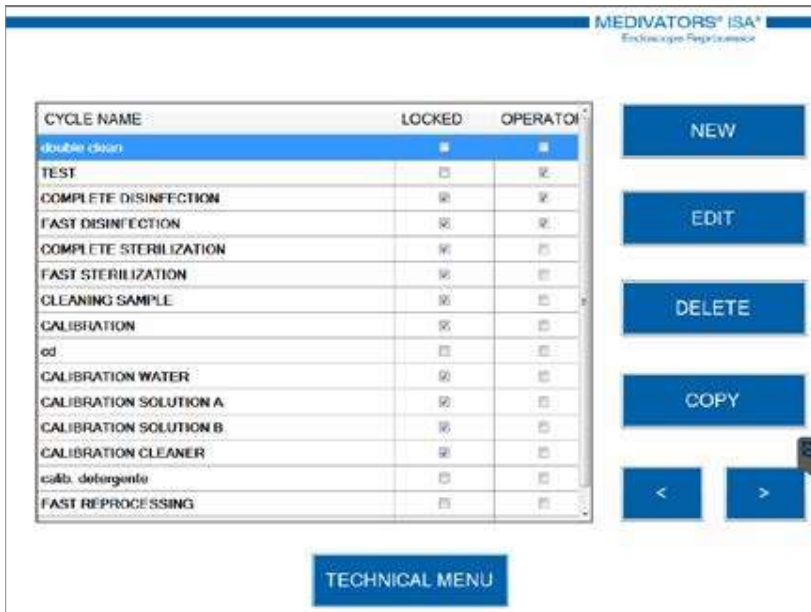
IMPORT



Proceeding in TECHNICAL MENU, you enter the page relative to program the cycles, through pulsed PROGRAMS.

This function can be used to enter a new cycle, modify an existing, delete from the list, and finally to make a copy of an existing one.

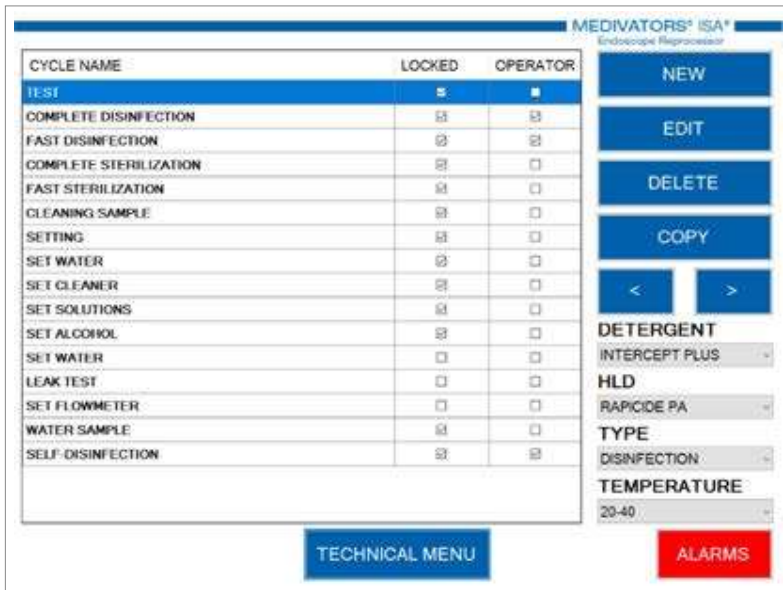
The two arrows at the bottom of the screen are used to scroll the list down (right arrow) or upwards (left arrow). Finally, to return to the previous page type on TECHNICAL MENU.



PROGRAMMING

This function can be used to create a new cycle, edit a existing one, delete from the list, and finally to make a copy of an existing one. The two arrows at the bottom right side of the screen are used to move

a specific program down (right arrow) or upwards (left arrow) of the list. Finally, to return back to the previous page type on TECHNICAL MENU.



The cycles in the list are the only validated cycles for MEDIVATORS™ ISA™ Endoscope Reprocessor. The amendments may include the drain time, the purge time and the number of rinses (all can be increased). The minimum contact time for all the phases is always guaranteed.

All the other parameters are fixed and even if wrongly modified, the changes are deleted or restored at the time that you save. In the following pages is shown all the cycle steps with the specific identification of the function for each of the panels.
Note: no flag or setting.

Page 1 - PRE - RINSE

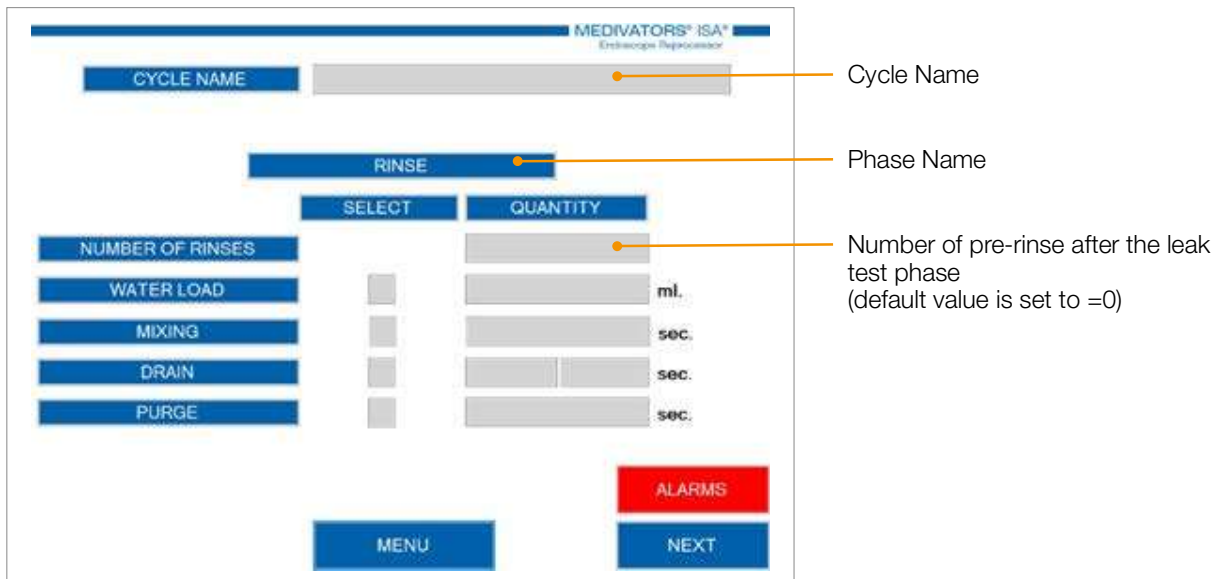


Table 1. Output

CODE	DESCRIPTION	TYPE
V11A	Valve for load dosing cylinder Sol. A	Electrical valve
V11B	Valve for drain dosing cylinder Sol. A	Electrical valve
V12A	Valve for load dosing cylinder Sol. B	Electrical valve
V12B	Valve for drain dosing cylinder Sol. B	Electrical valve
V11	Valve for dosing Sol. A	Electrical valve
V12	Valve for dosing Sol. B	Electrical valve
V13	Detergent Valve	Electrical valve
P5	Detergent Pump	Electrical pump
V19	Alcohol Valve	Electrical valve
P4	Alcohol Pump	Electrical pump
V1	First Water valve	Electrical valve
V18	Second water valve	Electrical valve
P1	Main pump	Electrical pump
V3	Drain Valve	Electrical valve
V2	Channels recirculation valve	Electrical valve
V14	Self-Disinfection Valve	Electrical valve
V15	Air purge Valve	Electrical valve
V17	Drain basin Valve	Electrical valve
V5	Extra Channel Valve	Electrical valve
V6	Biopsy Channel	Electrical valve
V7	Air Channel Valve	Electrical valve
V8	Water Channel Valve	Electrical valve
V9	Jet/Aux Channel Valve	Electrical valve
V10	Suction Channel Valve	Electrical valve
VPP1	Elevator Channel Valve	Electrical valve
V16	Leak test Vent Valve	Electrical valve
V4	Leak Test Valve	Electrical valve
P2	Leak Test Pump	Electrical pump
V2A	Load Solutions Valve	Electrical valve
PA	Spray Arm Pump	Electrical pump
VO	Open Lid Valve	Electrical valve
VC	Close Lid Valve	Electrical valve
VOC	Valve for lid Mechanism	Electrical valve

- 6. User Manual.
- 7. Service Manual.



- 8. Tag RFID operator



- 9. Tag RFID endoscope.



- 10. Hook-Up for Endoscopes (Optional, not included into the installation kit)

