



KEISEI MEDICAL INDUSTRIAL CO., LTD.

Флюидизационная система

LT-7



Head Office

3-19-6, Hongo, Bunkyo-ku, Tokyo 113-0033, Japan

Tel : +81-3-3816-2811(Main) Fax : +81-3-3816-1629

Niigata Factory

96, Yoshida-Konosu, Tsubame-shi, Niigata 959-0261, Japan

Tel : +81-256-92-3582

Fax : +81-256-92-6168

CE 0120

Спецификация флюидизационной кровати LI-7

LI-7-ST-220V	LI-7 стандартный тип (блок управления внутренний)	LI-7-SP-220V	LI-7сепаратный тип (блок управления внешний)
габариты	Основной блок 880(В) 905(Г) 2,200(Д), мм	габариты	Блок управления 945(В) 800(Г) 650(Д), мм
		Ёмкость для микрошариков	880(В) 905(Г) 2.200(Д), мм
вес	Основной блок 245Кг	вес	Блок управления 120Кг
			Кровать без подъёмника 175Кг
			Кровать с подъёмником 245Кг
	Керамические микрошарики 425Кг		Керамические микрошарики 425 Кг
Интенсивность флюидизации	Один уровень	Интенсивность флюидизации	5 уровней (1 2 3 4 5)
Диапазон регулировки температуры	Комн. температура плюс 2° - 20°	Диапазон регулировки температуры	Комн. темп. плюс 0° - 18°
Потребляемая энергия	1.1КВт	Потребляемая энергия	1.3КВт
	Требуемое напряжение		220В
	Диапазон установок температуры микрошариков		25°-40°С
	Фильтрующая простынь		Монофильная полиэстеровая нить размер ячейки: 37 микрон
	Максимальный рост пациента		200см
	Максимальный вес пациента		135Кг

Флюидизационная кровать LI-7, опции

LI-7-ST-220V	LI-7 Стандартный тип	LI-7-SP-220V	LI-7 Сепаратный тип Включает встроенную Функцию прерывистой флюидизации Ручной выключатель и набор стандартных аксессуаров
	Включает набор стандартных аксессуаров Стандартные аксессуары 18 Микрошарики 25Кг/ведро (17 вёдер,1 запасное) 2 Фильтрующие простыни 1 Виниловый чехол 1 Сито 2 Фильтр вентилятора 1 Воздушный фильтр (для стандартного типа) 1 Первичный фильтр (для стандартного типа) 2 Одноразовая водоотталкивающая простынь 2 Одноразовая впитывающая простынь 1 Инструкция по эксплуатации (LI-7 станд. тип)		Стандартные аксессуары Фильтрующие простыни 1 Виниловый чехол 1 Сито 2 Фильтр вентилятора 1 Воздушный фильтр 1 Первичный фильтр 2 Одноразовая водоотталкивающая простынь 2 Одноразовая впитывающая простынь 1 Инструкция по эксплуатации (LI-7 сепар. тип)
	Заводские опции LI-7-ST-IN Функцию прерывистой флюидизации LI-7-ST-WS Весы LI-7-ST-SW Ручной выключатель		Заводские опции LI-7-SP-LI Устройство подъёма/опускания кровати LI-7-ST-WS Весы
	Опции дилеров LI-7-ST-BS Встроенная ступень для подъёма L-LAND3-7 Ступень для подъёма LI-7-SR Боковое ограждение LI-7-IV IV держатель ёмкостей для капельницы LI-7-GU Регулируемая спинка L-LAND3-20 Подушка для спины (модель А) L-LAND3-21 Подушка для спины (модель В) LI-7-ST-BH Держатель аксессуаров LI-7-PTD Устройство вытяжения LI-7-PTDB Подвижный держатель LI-7-PL Подъёмник с электроприводом для ухода L-LAND3-22 Упор для ног		Опции дилеров L-LAND3-7 Ступень для подъёма LI-7-SR Боковое ограждение LI-7-IV IV держатель ёмкостей для капельницы LI-7-GU Регулируемая спинка L-LAND3-20 Подушка для спины (модель А) L-LAND3-21 Подушка для спины (модель В) LI-7-BH Держатель аксессуаров LI-7-PTD Устройство вытяжения LI-7-PTDB Подвижный держатель LI-7-PL Подъёмник с электроприводом для ухода L-LAND3-22 Упор для ног
	Одноразовые принадлежности L-LAND3-13 Одноразовая водоотталкивающая простынь L-LAND3-14 Одноразовая впитывающая простынь		Одноразовые принадлежности L-LAND3-13 Одноразовая водоотталкивающая простынь L-LAND3-14 Одноразовая впитывающая простынь
	Материалы для тех. обслуживания LI-7-MH-220V Эксплуатационный подогреватель LI-7-FS Фильтрующая простынь L-LAND3-16 Виниловый чехол L-LAND3-4 Фильтр вентилятора LI-7-ST-FF Воздушный фильтр (для стандартного типа) LI-7-ST-PF Первичный фильтр TS-600-5S Керамические микрошарики 25кг/ведро LI-7-SCR Сито		Материалы для тех. обслуживания LI-7-MH-220V Эксплуатационный подогреватель LI-7-FS Фильтрующая простынь L-LAND3-16 Виниловый чехол L-LAND3-4 Фильтр вентилятора LI-7-FF Воздушный фильтр LI-7-PF Первичный фильтр TS-600-5S Керамические микрошарики 25кг/ведро LI-7-SCR Сито
	Принадлежности LI-7-ST-HS Ручной выключатель LI-7-ST-FS Ножной выключатель		Принадлежности L-LAND6-9 Ручной выключатель L-LAND3-10 Ножной выключатель



E-16/0

- Connector: 3-pin Molex
- Measuring range: 0-100% O₂
- Output signal: 9.5-16 mV
- Response time: < 12 seconds
- Warranty: 16 months
- Storage: up to 6 months



Product Service

EC Certificate

Full Quality Assurance System

Directive 93/42/EEC on Medical Devices (MDD), Annex II excluding (4)
(Devices in Class IIa, IIb or III)

No. G1 18 03 84065 005

Manufacturer: **Nuova GmbH**
Lübecker Str. 17
23909 Ratzeburg
GERMANY



Facility(ies): Nuova GmbH
Lübecker Str. 17, 23909 Ratzeburg, GERMANY

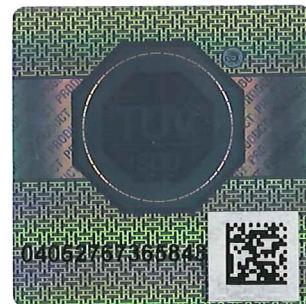
Product Category(ies): **Oxygen sensors**

The Certification Body of TÜV SÜD Product Service GmbH declares that the aforementioned manufacturer has implemented a quality assurance system for design, manufacture and final inspection of the respective devices / device categories in accordance with MDD Annex II. This quality assurance system conforms to the requirements of this Directive and is subject to periodical surveillance. For marketing of class III devices an additional Annex II (4) certificate is mandatory. See also notes overleaf.

Report No.: 713129331

Valid from: 2018-06-18

Valid until: 2023-06-17



Date, 2018-04-18

Stefan Preiß

TÜV SÜD Product Service GmbH is Notified Body with identification no. 0123

Page 1 of 1

CA-MI

Italian
Medical
Touch

SURGICAL SUCTION UNITS

CATALOGUE 2021

COMPANY PROFILE

Located nearby Parma, in the North of Italy, CA-MI is an Italian family-run factory founded in the early 80's and committed in the production of electromedical equipments, namely SURGICAL SUCTION UNITS for the aspiration of human and animal fluids, used by home-care, hospital, emergency, veterinary and aesthetic professionals. With presence in over 90 countries, and listed in international organizations such as UN, UNICEF, UNFPA, CA-MI offers a comprehensive line to meet the various requirements, including a variety of designs from compact tabletop (ASKIR's), to portable with battery back-up (BR's), to professional units on castors (HOSPIVAC's). Characterized by a great versatility of applications with easy interchange of accessories, all CA-MI suction pumps are manufactured in Italy with flame retardant PC/ABS in compliance with the latest normatives and constitute a solid support whenever electric suction is required. Special attention is paid to liquid collecting jars to offer operators all options. Whether reusable or disposable, different materials and sizes are available, and can be easily replaced with the new Multi Purpose Rail system. CA-MI suction pumps are indicated for use in various specialities, finding applications in OT, ICU, General Surgery, Gastroenterology, Obstetrics, Endoscopy, ENT, Liposuction, Patient Transfer, Rescue, Ambulance Car, Veterinary, Dentistry, just to mention a few.

CA-MI is also addressing to medical and pharmacy retailers with a vast line of medical devices for home use and is one of the most preferred partners in the marketplace for OEM-basis supplies. Visitors are welcome to meet the members of the CA-MI Export Team on occasion of the major international exhibitions such as Medica in Dusseldorf (D) or Arab Health in Dubai (UAE), where we are constantly present with our entire range of medical devices.

QUALITY

Relying on in-house R&D and design departments, all CA-MI suction devices are manufactured in Italy using state-of-the-art and wear resistant materials, in compliance with: UNI EN ISO 9001:2015 and EN ISO 13485:2016 normatives and carry relevant CE 0123 number certified by German Notified Body TÜV SÜD Product Service GmbH.

CLASSIFICATIONS (MDD 93/42/EEC and subsequent changes)

Class IIa Medical Devices

All Suction Units

Class Im with function of measure

Flovac Liners and Containers

INDEX

SURGICAL SUCTION UNITS

OVERVIEW	04 07
NEW ASPIRET	08
NEW ASKIR 20	09
NEW ASKIR 30	10
NEW ASKIR 30 PROXIMITY	11
ASKIR 36 BR	12
NEW ASKIR 36 LI-ION	13
NEW ASKIR 118	14
NEW ASKIR 118 BASIC	15
NEW ASKIR 230/12V BR	16
NEW EMIVAC	17
NEW ASKIR 30 12V	17
ASKIR C30 BR	18
ASKIR C30	19
NEW HOSPIVAC 350	20
NEW HOSPIVAC 400	21
NEW HOSPIVAC 350 400 - CONFIGURATIONS	22
NEW HOSPIVAC BR	23
JARS INTERCHANGE - MPR system	24
JARS - REUSABLE and FLOVAC® DISPOSABLE LINERS & CONTAINERS	25 27
ACCESSORIES and CONSUMABLES	28 29
ALL CODES	30 31



Intended Use

Electric suction units are medical devices used in wards, theaters, ambulances, home-care and other fields for aspirating human or animal fluids from the mouth, the airways and from operation sites by sucking the material through a cannula into a collection jar. Mobile electric suction units offer a convenient alternative to central vacuum systems.

CA-MI suction units are divided into 3 main categories:

DESK-TYPE

Portable suction units with reduced size and weight that can be easily displaced. Trolley on castors available as an option.

BATTERY-OPERATED

Suction units that besides standard operation by mains have autonomy by internal rechargeable battery.

ON CASTORS

Professional suction units on antistatic castors, offering a great choice of accessories for various applications.



Fields of application

CA-MI suction units find application in a variety of different fields, such as ENT, Tracheostomy, Endoscopy, Gastroenterology, General Surgery, Obstetrics, Veterinary, Dental, Emergency, Crash Carts, Ambulance and many others.

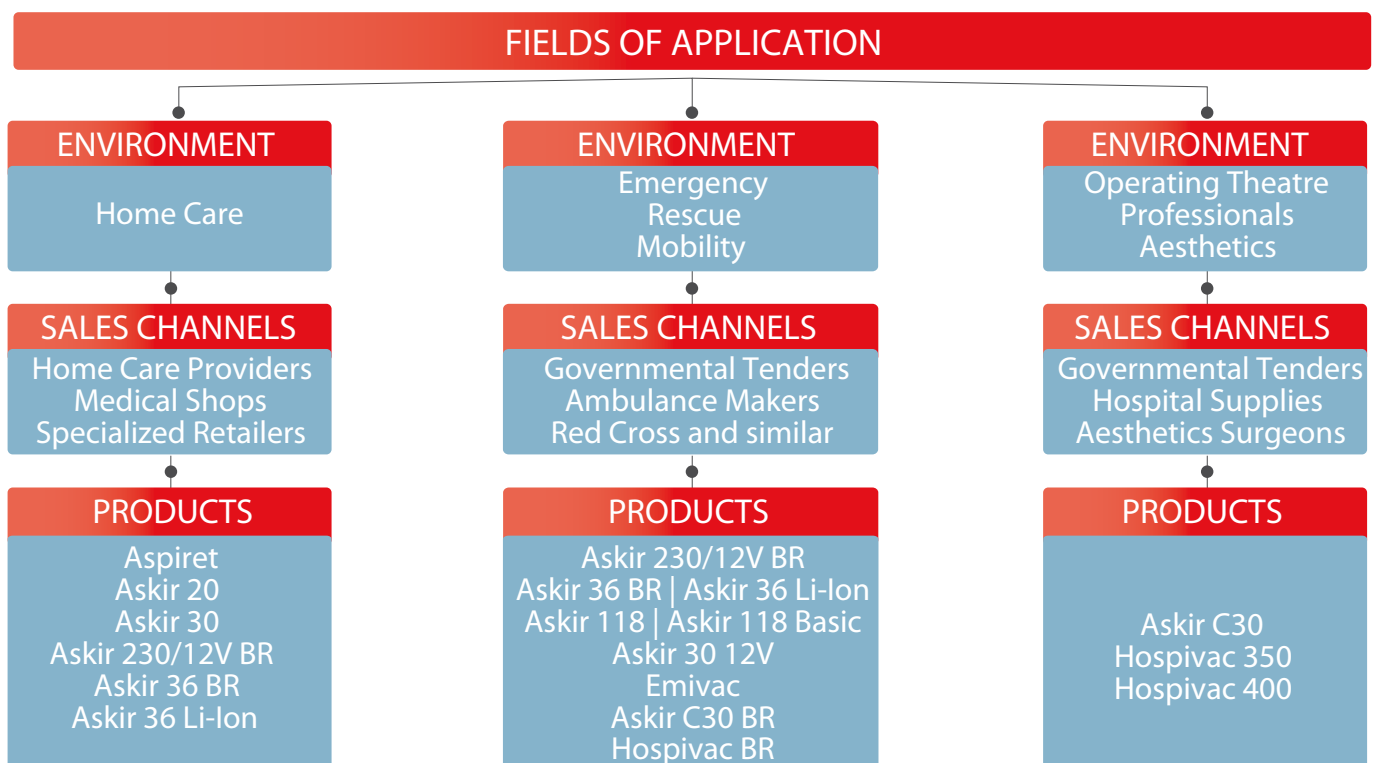
Configurations

All CA-MI suction units are all provided with a number of standard accessories, along with optional accessories to facilitate the operation of medical staff, professionals and lay people.

- Vacuum pump
- Vacuum regulator footswitch
- Jar for liquid collection with overflow valve to prevent liquid from going into the pump
- Hydrophobic/bacterial filter to avoid contaminations and liquid passage
- Vacuum regulator and gauge
- Suction tubes
- Wall mount for ambulances

A number of optional accessories / functions is also available

- Foot-pedal switch with double-mode operation
- Change-over function to quickly switch suction from one jar to the next
- Antistatic castors with brakes and 360° swivel for easy displacement
- Built-in rechargeable battery for operation without mains



MAIN CHARACTERISTICS

Antibacterial/Hydrophobic Filter
Single-patient filters to avoid cross contaminations and liquid passage to the pump.

Vacuum Gauge
Analogic display in different diameters with graduated scale in mmHg and kPa (interval by 5) or digital LCD.

Liquid Collection Jar
Single or multiple containers in different sizes and materials, reusable or disposable. Provided with cover and overflow valve system.

ON/OFF Switch
Mechanical or digital switch.

Conical Connector
Different diameters to connect any type of cannula.

Vacuum Regulator
Manual knob or digital keys for accurate adjustment of vacuum levels.

Pump (main unit)
Oilless pumps for non-stop operation with different suction capacities, from 15 l/min to 90 l/min.

Handle for easy displacement and rear compartment for accessory storage.

Safety Trap Bottle constitutes an additional protection of the pump besides the overflow valve system inside every jar.

MPR System (Multi-Purpose Rail)
Easy interchange of CA-MI accessories, such as rings of various diameters to accommodate jars of different sizes and types, safety trap bottles, cannula holders or a standard medical rail where to hook any accessory by means of standard clamps.

4 x twin antistatic castors Ø75mm with brakes with 360° swivel.



DESK-TYPE suction units				
	NEW ASPIRET	NEW ASKIR 20	NEW ASKIR 30	NEW ASKIR 30 PROXIMITY
Power Feeding	230V / 50-60Hz 120-127V / 60Hz	230V / 50-60Hz	230V / 50-60Hz 110-127V / 60Hz	230V / 50-60Hz
Max Air Flow (without accessories)	15 l/min	16 l/min	40 l/min	40 l/min
Max Vacuum	-563 mmHg	-563 mmHg	-600 mmHg	-600 mmHg
Operation	Non-stop approved	Non-stop approved	Non-stop approved	Non-stop approved
Proximity (touchless ON/OFF)				YES

DESK-TYPE BATTERY OPERATED suction units					
	ASKIR 230/12V BR	ASKIR 36 BR	ASKIR 36 LI-ION	ASKIR 118 ASKIR 118 WM BASIC	ASKIR 118 ASKIR 118 WM
AC/DC Universal adapter 100-240V / 50-60Hz	YES	YES	YES	YES	YES
Car Adapter 12V	YES	YES	YES	YES (except WM model)	YES (except WM model)
Ambulance wall mount (12V 4A) with support and recharge functions				YES (WM model only)	YES (WM model only)
Wall mount with support function only	Optional	Optional	Optional		
Type of battery	Lead	Lead	Lithium-Ion	Lithium-Ion	Lithium-Ion
Battery Autonomy	80 min	60 min	70 min	70 min	70 min
Recharge Time	240 min	240 min	360 min	360 min	360 min
Max Air Flow (without accessories)	16 l/min	36 l/min	36 l/min	36 l/min	26 l/min
Max Vacuum	-563 mmHg	-600 mmHg	-600 mmHg	-563 mmHg	-563 mmHg
10G certified				YES (WM model only)	YES (WM model only)
Energy-saving			YES	YES	YES
Proximity (touchless ON/OFF)			YES	YES	YES
Carrying bag	Optional	Optional	Optional	YES	YES

EMERGENCY suction units			
	NEW ASKIR 12V	NEW EMIVAC	
Power Feeding	12V CAR ADAPTER	FOOT OPERATED	
ON CASTORS suction units			
	ASKIR C30	NEW HOSPIVAC 350	NEW HOSPIVAC 400
Power Feeding	220-230V / 50-60Hz	220-230V / 50-60Hz 110-127V / 60Hz	220-230V / 50-60Hz
Max Air Flow (without accessories)	40 l/min	60 l/min	90 l/min
Max Vacuum	-600 mmHg	-675 mmHg	-675 mmHg
Operation	Non-stop approved	Non-stop approved	Non-stop approved
Options	Footswitch	Footswitch Change-Over	Footswitch Change-Over
ON CASTORS BATTERY OPERATED suction units			
	ASKIR C30 BR	HOSPIVAC BR	
AC/DC Universal adapter	YES	NO	
Power Feeding	100-240V 50-60Hz	220-230V 50-60Hz	
Type of battery	Lead	Lead	
Battery Autonomy	60 min	250 min	
Recharge Time	240 min	480 min	
Energy-saving		YES	
Max Air Flow (without accessories)	36 l/min	50 l/min	
Max Vacuum	-600 mmHg	-637,5 mmHg	



MAIN APPLICATIONS

ENT

Home Care

Room/Ward

Tracheostomy

CE 0123

NEW ASPIRET is suitable for nasal, oral and endotracheal aspiration of bodily fluids (mucus or catarrh) from adults and children. Indicated for tracheotomized patients, minor surgical applications and post-operative therapy, NEW ASPIRET finds application in out-patient and in-patient care, elderly care and in private care.

ACCESSORIES INCLUDED

- Liquid Collection Jar with overflow valve system (different options, see below)
- Silicone Tubes \varnothing 6x10mm (autoclavable) - Patient Tube length 140cm
- Conical Connector \varnothing 8-9-10mm
- Antibacterial & Hydrophobic Filter (single-patient)
- CH20 Canula
- Power Cord with Schuko plug

OPTIONS

- Stand on 5 Castors \varnothing 50mm with Brakes (antistatic upon request) REF 27731
- Carrying Bag (for 1000ml jar) SP 0207/02
- Carrying Bag (for 2000ml jar) SP 0207
- Yankauer Handle Flat Tip with Hole 2044403
- Yankauer Handle Crown Tip with Hole 2044401
- Yankauer Tube L= 180 204413018

TECHNICAL FEATURES

Motor	Oilless and maintenance-free piston pump
Power Feeding	220-230V / 50-60Hz or 120-127V / 60Hz
ISO 10079-1 Classification	HIGH VACUUM / LOW FLOW
Max Vacuum (adjustable)	-0.75 bar -75 kPa -563 mmHg (value at sea level - different altitudes may affect it)
Max free air flow rate	15 l/min
Noise Level	59,6 dBA
Duty cycle	Non-stop operation
IP Code	IP21
Weight	kg 2.95 (unit packed with all accessories)
Size	cm 19 x 23 x 15
Years of Warranty	2
Shipping carton	4
Place of Manufacturing	Italy

Italian
Medical
Touch
MADE IN ITALY

AVAILABLE CONFIGURATIONS

RE 310001	NEW ASPIRET with 1000ml Autoclavable Jar in Makrolon® (max 121°C)
RE 310001/01	NEW ASPIRET with 2000ml Autoclavable Jar in Makrolon® (max 121°C)
RE 310001/19	NEW ASPIRET with 1000ml Autoclavable Jar in Apec® (max 143°C)
RE 310001/20	NEW ASPIRET with 2000ml Autoclavable Jar in Apec® (max 143°C)
RE 310002	NEW ASPIRET with 1000ml Flovac® Disposable Liner
RE 310002/01	NEW ASPIRET with 2000ml Flovac® Disposable Liner

MAIN APPLICATIONS

ENT

Home Care

Room/Ward

Tracheostomy



CE 0123

NEW ASKIR 20 is suitable for nasal, oral and endotracheal aspiration of bodily fluids (mucus or catarrh) from adults and children. Indicated for tracheotomized patients, minor surgical applications and post-operative therapy, NEW ASKIR 20 finds application in out-patient and in-patient care, elderly care and in private care.

ACCESSORIES INCLUDED

- Liquid Collection Jar with overflow valve system (different options, see below)
- Silicone Tubes \varnothing 6x10mm (autoclavable) - Patient Tube length 140cm
- Conical Connector \varnothing 8-9-10mm
- Antibacterial & Hydrophobic Filter (single-patient)
- CH20 Canula
- Power Cord with Schuko plug

OPTIONS

- Stand on 5 Castors \varnothing 50mm with Brakes (antistatic upon request) REF 27730
- Carrying Bag (for 1000ml jar) SP 0207/02
- Carrying Bag (for 2000ml jar) SP 0207
- Wall Mount 27736
- Yankauer Handle Flat Tip with Hole 2044403
- Yankauer Handle Crown Tip with Hole 2044401
- Yankauer Tube L= 180 204413018

TECHNICAL FEATURES

Motor	Oiless and maintenance-free piston pump
Power Feeding	220-230V / 50-60Hz
ISO 10079-1 Classification	HIGH VACUUM / LOW FLOW
Max Vacuum (adjustable)	-0.75 bar -75 kPa -563 mmHg (value at sea level - different altitudes may affect it)
Max free air flow rate	16 l/min
Noise Level	60,5 dBA
Duty cycle	Non-stop operation
IP Code	IP21
Weight	kg 3.49 (unit packed with all accessories)
Size	cm 35 x 18 x 21
Years of Warranty	2
Shipping carton	3
Place of Manufacturing	Italy

Italian
Medical
Touch
MADE IN ITALY

AVAILABLE CONFIGURATIONS

RE 310100/12	NEW ASKIR 20 with 1000ml Autoclavable Jar in Makrolon® (max 121°C)
RE 310100/13	NEW ASKIR 20 with 2000ml Autoclavable Jar in Makrolon® (max 121°C)
RE 310100/64	NEW ASKIR 20 with 1000ml Autoclavable Jar in Apec® (max 143°C)
RE 310100/70	NEW ASKIR 20 with 2000ml Autoclavable Jar in Apec® (max 143°C)
RE 310101/12	NEW ASKIR 20 with 1000ml Flovac® Disposable Liner
RE 310101/13	NEW ASKIR 20 with 2000ml Flovac® Disposable Liner



MAIN APPLICATIONS

Endoscopy

Gastroenterology

General Surgery

Home-Care

Obstetrics

Room / Ward

Veterinary

CE 0123

NEW ASKIR 30 is suitable for nasal, oral and endotracheal aspiration of bodily fluids (mucus or catarrh) from adults and children. Indicated for tracheotomized patients, surgical applications and post-operative therapy, NEW ASKIR 30 finds application in out-patient and in-patient care, elderly care, in private care and at professional level due to its powerful suction capacity of 40 l/min. The newly-designed ergonomic handle ensures a comfortable and secure grip.

ACCESSORIES INCLUDED

- Liquid Collection Jar with overflow valve system (different options, see below)
- Silicone Tubes \varnothing 6x10mm (autoclavable) - Patient Tube length 140cm
- Conical Connector \varnothing 8-9-10mm
- Antibacterial & Hydrophobic Filter (single-patient)
- CH20 Canula
- Power Cord with Schuko plug

OPTIONS

- Stand on 5 Castors \varnothing 50mm with Brakes (antistatic upon request) REF 27730
- Carrying Bag (for 1000ml jar) SP 0207/02
- Carrying Bag (for 2000ml jar) SP 0207
- Footswitch SP 0068/01
- Wall Mount 27736
- Yankauer Handle Flat Tip with Hole 2044403
- Yankauer Handle Crown Tip with Hole 2044401
- Yankauer Tube L= 180 204413018

TECHNICAL FEATURES

Motor	Oiless and maintenance-free piston pump
Power Feeding	220-230V / 50-60Hz or 110-127V / 60Hz
ISO 10079-1 Classification	HIGH VACUUM / HIGH FLOW
Max Vacuum (adjustable)	-0.80 bar -80 kPa -600 mmHg (value at sea level - different altitudes may affect it)
Max free air flow rate	40 l/min
Noise Level	60,5 dBA
Duty cycle	Non-stop operation
IP Code	IP21
Weight	kg 4.15 (unit packed with all accessories)
Size	cm 35 x 18 x 21
Years of Warranty	2
Shipping carton	3
Place of Manufacturing	Italy

Italian
Medical
Touch
MADE IN ITALY

AVAILABLE CONFIGURATIONS

RE 310100/02	NEW ASKIR 30 with 1000ml Autoclavable Jar in Makrolon® (max 121°C)
RE 310100/03	NEW ASKIR 30 with 2000ml Autoclavable Jar in Makrolon® (max 121°C)
RE 310100/74	NEW ASKIR 30 with 1000ml Autoclavable Jar in Apec® (max 143°C)
RE 310100/63	NEW ASKIR 30 with 2000ml Autoclavable Jar in Apec® (max 143°C)
RE 310101/02	NEW ASKIR 30 with 1000ml Flovac® Disposable Liner
RE 310100/53	NEW ASKIR 30 with 2000ml Flovac® Disposable Liner

MAIN APPLICATIONS

- Endoscopy
- Gastroenterology
- General Surgery
- Home-Care
- Obstetrics
- Room / Ward
- Veterinary



CE 0123

NEW ASKIR 30 Proximity is suitable for nasal, oral and endotracheal aspiration of bodily fluids (mucus or catarrh) from adults and children. Indicated for tracheotomized patients, surgical applications and post-operative therapy, NEW ASKIR 30 Proximity finds application in out-patient and in-patient care, elderly care, in private care and at professional level due to its powerful suction capacity of 40 l/min. The newly-designed ergonomic handle ensures a comfortable and secure grip.

ACCESSORIES INCLUDED

- Liquid Collection Jar with overflow valve system (different options, see below)
- Silicone Tubes \varnothing 6x10mm (autoclavable) - Patient Tube length 140cm
- Conical Connector \varnothing 8-9-10mm
- Antibacterial & Hydrophobic Filter (single-patient)
- CH20 Canula
- Power Cord with Schuko plug

OPTIONS

- Stand on 5 Castors \varnothing 50mm with Brakes (antistatic upon request) REF 27730
- Carrying Bag (for 1000ml jar) SP 0207/02
- Carrying Bag (for 2000ml jar) SP 0207
- Footswitch SP 0068/01
- Wall Mount 27736
- Yankauer Handle Flat Tip with Hole 2044403
- Yankauer Handle Crown Tip with Hole 2044401
- Yankauer Tube L= 180 204413018

TECHNICAL FEATURES

Motor	Oilless and maintenance-free piston pump
Power Feeding	220-230V / 50-60Hz
ISO 10079-1 Classification	HIGH VACUUM / HIGH FLOW
Max Vacuum (adjustable)	-0.80 bar -80 kPa -600 mmHg (value at sea level - different altitudes may affect it)
Max free air flow rate	40 l/min
Noise Level	60,5 dBA
Duty cycle	Non-stop operation
IP Code	IP21
Weight	kg 4.16 (unit packed with all accessories)
Size	cm 35 x 18 x 21
Years of Warranty	2
Shipping carton	3
Place of Manufacturing	Italy

Italian
Medical
Touch
MADE IN ITALY

AVAILABLE CONFIGURATIONS

RE 310100/02	NEW ASKIR 30 Proximity with 1000ml Autoclavable Jar in Makrolon® (max 121°C)
RE 310100/03	NEW ASKIR 30 Proximity with 2000ml Autoclavable Jar in Makrolon® (max 121°C)
RE 310100/75	NEW ASKIR 30 Proximity with 1000ml Autoclavable Jar in Apec® (max 143°C)
RE 310100/62	NEW ASKIR 30 Proximity with 2000ml Autoclavable Jar in Apec® (max 143°C)
RE 310101/02	NEW ASKIR 30 Proximity with 1000ml Flovac® Disposable Liner
RE 310100/53	NEW ASKIR 30 Proximity with 2000ml Flovac® Disposable Liner



MAIN APPLICATIONS

Emergency Dept.

Home-Care

Patient Transfer

Room / Ward

Tracheostomy

Veterinary

Internal Rechargeable Battery

CE 0123

ASKIR 36BR is a portable suction unit for professional use and with a powerful aspiration of max 36 l/min, conceived to be lightweight for easy transport. Three different options for operation: AC/DC adapter, internal lead or lithium-ion rechargeable battery and 12V make it a versatile suction unit approved for NON-STOP operation without overheating. Provided with visual and acoustic alarm indicating low battery level. The newly-designed ergonomic handle ensures a comfortable and secure grip.

ACCESSORIES INCLUDED

- Liquid Collection Jar with overflow valve system (different options, see below)
- Silicone Tubes \varnothing 8x14mm (autoclavable) - Patient Tube length 150cm
- Conical Connector \varnothing 10-11-12mm
- Antibacterial & Hydrophobic Filter (single-patient)
- Internal rechargeable Lead Battery
- Universal switching power adapter and Cable + 12V Car Adapter

OPTIONS

- Stand on 5 Castors \varnothing 50mm with Brakes (antistatic upon request) REF 27730
- Carrying Bag (for 1000ml jar) SP 0207/02
- Carrying Bag (for 2000ml jar) SP 0207
- Wall Mount Brackets 27736
- Footswitch SP 0068/01
- Yankauer Handle Flat Tip with Hole 2044403
- Yankauer Handle Crown Tip with Hole 2044401
- Yankauer Tube L= 180 204413018

TECHNICAL FEATURES

Motor	Oiless and maintenance-free piston pump
Power Feeding	14V \rightleftharpoons 4A by AC/DC Universal Adapter 100-240V / 50-60Hz - 100VA (model UE60-140429SPA1)
	12V \rightleftharpoons 4A Lead rechargeable battery - Autonomy 60 min. - Recharging Time 4 hours
	12V \rightleftharpoons 4A Car adapter
ON/OFF Switch	Mechanical switch
ISO 10079-1 Classification	HIGH VACUUM / HIGH FLOW
Max Vacuum (adjustable)	-0.80 bar -80 kPa -600 mmHg (value at sea level - different altitudes may affect it)
Max free air flow rate	36 l/min
Noise Level	65,5 dBA (with jar) / 68,5 dBA (without jar)
Duty cycle	Non-stop operation (by mains only)
IP Code	IP21
Weight	kg 5.31 (unit packed with all accessories)
Size	cm 35 x 18 x 21
Years of Warranty	2
Shipping carton	3
Place of Manufacturing	Italy

Italian
Medical
Touch
MADE IN ITALY

AVAILABLE CONFIGURATIONS

RE 410200/03	ASKIR 36BR with 1000ml Autoclavable Jar in Makrolon® (max 121°C)
RE 410200/09	ASKIR 36BR with 2000ml Autoclavable Jar in Makrolon® (max 121°C)
RE 410200/10	ASKIR 36BR with 1000ml Autoclavable Jar in Apec® (max 143°C)
RE 410200/12	ASKIR 36BR with 2000ml Autoclavable Jar in Apec® (max 143°C)
RE 410201	ASKIR 36BR with 1000ml Flovac® Disposable Liner
RE 410201/01	ASKIR 36BR with 2000ml Flovac® Disposable Liner

MAIN APPLICATIONS

Emergency Dept.

Home-Care

Patient Transfer

Room / Ward

Tracheostomy

Veterinary



Internal Rechargeable Battery

CE 0123



NEW ASKIR 36 LI-ION is a portable suction unit for professional use and with a powerful aspiration of max 36 l/min, conceived to be lightweight for easy transport. Three different options for operation: AC/DC adapter, internal lead or lithium-ion rechargeable battery and 12V make it a versatile suction unit approved for NON-STOP operation without overheating. Provided with Li-Ion battery, this model is equipped with a pressure sensor placed in the PCB reduces the speed of the motor when no vacuum is detected and therefore no aspiration is taking place, and with PROXIMITY function to switch ON/OFF without touch. The newly-designed ergonomic handle ensures a comfortable and secure grip. The newly-designed ergonomic handle ensures a comfortable and secure grip.

ACCESSORIES INCLUDED

- Liquid Collection Jar with overflow valve system (different options, see below)
- Silicone Tubes \varnothing 8x14mm (autoclavable) - Patient Tube length 150cm
- Conical Connector \varnothing 10-11-12mm
- Antibacterial & Hydrophobic Filter (single-patient)
- Internal rechargeable Lithium-ion Battery
- Universal switching power adapter and Cable + 12V Car Adapter

OPTIONS

- Stand on 5 Castors \varnothing 50mm with Brakes (antistatic upon request) REF 27730
- Carrying Bag (for 1000ml jar) SP 0207/02
- Carrying Bag (for 2000ml jar) SP 0207
- Wall Mount Brackets 27736
- Footswitch SP 0068/01
- Yankauer Handle Flat Tip with Hole 2044403
- Yankauer Handle Crown Tip with Hole 2044401
- Yankauer Tube L= 180 204413018

TECHNICAL FEATURES

Motor	Oilless and maintenance-free piston pump
Power Feeding	14V \rightleftharpoons 4A by AC/DC Universal Adapter 100-240V / 50-60Hz - 100VA (model UE60-140429SPA1)
	14,8V \rightleftharpoons 5,2A Li-Ion rechargeable battery - Autonomy 70 min. - Recharging Time 6 hours
	12V \rightleftharpoons 4A Car adapter
ISO 10079-1 Classification	HIGH VACUUM / HIGH FLOW
Max Vacuum (adjustable)	-0.80 bar -80 kPa -600 mmHg (value at sea level - different altitudes may affect it)
Max free air flow rate	36 l/min
Noise Level	60 dBA
ON/OFF Switch	Soft-Touch switch
Duty cycle	Non-stop operation (by mains only)
IP Code	IP22
Weight	kg 4.31 (unit packed with all accessories)
Size	cm 35 x 18 x 21
Years of Warranty	2
Shipping carton	2
Place of Manufacturing	Italy

Italian Medical Touch
MADE IN ITALY

AVAILABLE CONFIGURATIONS

RE 410205	NEW ASKIR 36BR LI-ION with 1000ml Autoclavable Jar in Makrolon [®] (max 121°C)
RE 410205/01	NEW ASKIR 36BR LI-ION with 2000ml Autoclavable Jar in Makrolon [®] (max 121°C)
RE 410205/04	NEW ASKIR 36BR LI-ION with 1000ml Autoclavable Jar in Apec [®] (max 143°C)
RE 410205/05	NEW ASKIR 36BR LI-ION with 2000ml Autoclavable Jar in Apec [®] (max 143°C)
RE 410205/02	NEW ASKIR 36BR LI-ION with 1000ml Flovac [®] Disposable Liner
RE 410205/03	NEW ASKIR 36BR LI-ION with 2000ml Flovac [®] Disposable Liner



Wall mount for ambulance



MAIN APPLICATIONS

Home-Care

Patient Transfer

Room/Ward

Tracheostomy

Emergency

Veterinary

Ambulance Car

Emergency

Rescue

NEW ASKIR 118 is an electric medical device for the nasal, oral and tracheal aspiration of body fluids in children or adults. It is available in two configurations, one specifically designed for use in ambulance car and emergency and the other for home-care and hospital applications. Large LCD for clear reading of vacuum values along with soft keys for vacuum adjustment increase the accuracy of aspiration. Smart operation thanks to the combination of the lightweight lithium-ion battery with the innovating FEEDBACK system that controls and manages the power of aspiration, providing a long autonomy of the battery and quiet noise level during operation. The PROXIMITY function to switch ON or OFF the device without touch prevents and avoids cross-contamination in-between patients. The unit is equipped with a long-life brushless motor eliminating any type of smell and coal residuals. The NEW ASKIR 118 series is available with various options of jar materials, such as the autoclavable polycarbonate (121°C), or the FLOVAC® disposable liners, or the APEC® that can resist up to 143°C. The ambulance wall mount is 10g dynamically tested according to the EN 1789:2007 last edition European Norm.

DIGITAL VERSION ACCESSORIES INCLUDED

- Liquid Collection Jar with overflow valve system (different options, see below)
- Silicone Tubes \varnothing 8x14mm (autoclavable) - Patient Tube length 150cm + Conical Connector \varnothing 10-11-12mm
- Antibacterial & Hydrophobic Filter (single-patient) + CH20 Canula
- Universal switching power adapter (100-240V / 50-60Hz) and Cable
- 12V Car Adapter for RE410151/XX code only
- Wall mount for ambulance (size cm 20x16x16) for RE410150/XX code only
- Protective Carrying Case (included for RE410150/XX / option for RE410151/XX code SP 0207/01)



DIGITAL VERSION TECHNICAL FEATURES

Brushless Motor	Oilless and maintenance-free piston pump
Power Feeding	14V \rightleftharpoons 4A by AC/DC Universal Adapter 100-240V / 50-60Hz - 100VA (model UE60-140429SPA1)
	14,8V \rightleftharpoons 5,2A Li-Ion rechargeable battery - Autonomy 70 min. - Recharging Time 6 hours
	12V \rightleftharpoons 4A Car adapter for RE410151/XX code only
	Wall mount for ambulance (12V \rightleftharpoons 4A) for RE410150/XX code only
Max Vacuum (adjustable)	-0.75 bar -75 kPa -563 mmHg (value at sea level - different altitudes may affect it)
ISO 10079-1 Classification	HIGH VACUUM / HIGH FLOW
Max free air flow rate	26 l/min
Noise level	min. 46,7 dB max. 61,8 dB (depending on power supply)
Duty cycle	Non-stop operation (by mains only)
IP Code	IP22
Weight	kg 4.07 (unit packed with all accessories)
Size	cm 35 x 15 x 19
Years of Warranty	2
Shipping carton	2
Place of Manufacturing	Italy

Italian
Medical
Touch
MADE IN ITALY

DIGITAL VERSION AVAILABLE CONFIGURATIONS

- NEW ASKIR 118 with 1000ml Autoclavable Jar in Makrolon® (max 121°C)
- NEW ASKIR 118 with 1000ml Autoclavable Jar in Apec®(max 143°C)
- NEW ASKIR 118 with 1000ml Flovac®Disposable Liner

ASKIR 118

- RE 410151
- RE 410151/05
- RE 410151/02

ASKIR 118 WM

- RE 410150
- RE 410150/05
- RE 410150/02

CE 0123

MAIN APPLICATIONS

- Home-Care
- Patient Transfer
- Room/Ward
- Tracheostomy
- Emergency
- Veterinary



- Ambulance Car
- Emergency
- Rescue

Wall mount for ambulance



NEW ASKIR 118 BASIC is an electric medical device for the nasal, oral and tracheal aspiration of body fluids in children or adults. It is available in two configurations, one specifically designed for use in ambulance car and emergency and the other for home-care and hospital applications. The unit is equipped with a long-life oilless piston pump motor providing 36 l/min suction capacity. The NEW ASKIR 118 BASIC series is available with various options of jar materials, such as the autoclavable polycarbonate (121°C), or the FLOVAC® disposable liners, or the APEC® that can resist up to 143°C. The ambulance wall mount is 10g dynamically tested according to the EN 1789:2007 last edition European Norm.

ANALOGIC VERSION ACCESSORIES INCLUDED

- Liquid Collection Jar with overflow valve system (different options, see below)
- Silicone Tubes ø 8x14mm (autoclavable) - Patient Tube length 150cm + Conical Connector ø 10-11-12mm
- Antibacterial & Hydrophobic Filter (single-patient) + CH20 Canula
- Universal switching power adapter (100-240V 50/60Hz) and Cable
- 12V Car Adapter for RE410171/XX code only
- Wall mount for ambulance (size cm 20x16x16) for RE410170/XX code only
- Protective Carrying Case (included for RE410170/XX / option for RE410171/XX code SP 0207/01)



ANALOGIC VERSION TECHNICAL FEATURES

Brushless Motor	Oilless and maintenance-free piston pump
Power Feeding	14V \rightleftharpoons 4A by AC/DC Universal Adapter 100-240V / 50-60Hz - 100VA (model UE60-140429SPA1)
	14,8V \rightleftharpoons 5,2A Li-Ion rechargeable battery - Autonomy 70 min. - Recharging Time 6 hours
	12V \rightleftharpoons 4A Car adapter for RE410171/XX code only
	Wall mount for ambulance (12V \rightleftharpoons 4A) for RE410170/XX code only
Max Vacuum (adjustable)	-0.75 bar -75 kPa -563 mmHg (value at sea level - different altitudes may affect it)
ISO 10079-1 Classification	HIGH VACUUM / HIGH FLOW
Max free air flow rate	36 l/min
Max free air flow rate	min. 54,7 dB max. 68,2 dB (depending on power supply)
Duty cycle	Non-stop operation (by mains only)
IP Code	IP22
Weight	kg 2.50 (unit packed with all accessories)
Size	cm 35 x 15 x 19
Years of Warranty	2
Shipping carton	2
Place of Manufacturing	Italy



ANALOGIC VERSION AVAILABLE CONFIGURATIONS

	118 BASIC	118 BASIC WM
NEW ASKIR 118 BASIC with 1000ml Autoclavable Jar in Makrolon® (max 121°C)	RE 410171	RE 410170
NEW ASKIR 118 BASIC with 1000ml Autoclavable Jar in Apec®(max 143°C)	RE 410171/03	RE 410170/03
NEW ASKIR 118 BASIC with 1000ml Flovac® Disposable Liner	RE 410171/01	RE 410170/01



The warranty lapses immediately if the unit is used without all the required accessories or with non-original (CA-MI accessories)



MAIN APPLICATIONS

Emergency Dept.

Home-Care

Patient Transfer

Room / Ward

Tracheostomy

Veterinary

Internal Rechargeable Battery

CE 0123

NEW ASKIR 230/12V BR is an electric suction unit for the aspiration of body liquids, oral, nasal and tracheal aspiration in adults or children. Suitable for emergency applications and for post-operative therapy, both in professional environment and home-care. Three different options for operation: AC/DC adapter, rechargeable battery and 12V make it a versatile suction unit approved for NON-STOP operation without overheating. Provided with visual and acoustic alarm indicating low battery level. The newly-designed ergonomic handle ensures a comfortable and secure grip.

ACCESSORIES INCLUDED

- Liquid Collection Jar with overflow valve system (different options, see below)
- Silicone Tubes \varnothing 6x10mm (autoclavable) - Patient Tube length 140cm
- Conical Connector \varnothing 8-9-10mm
- Antibacterial & Hydrophobic Filter (single-patient) + CH20 Canula
- AC/DC Universal Adapter + Power Cord with European plug
- 12V Car Adapter

OPTIONS

- Stand on 5 Castors \varnothing 50mm with Brakes (antistatic upon request) REF 27730
- Carrying Bag (for 1000ml jar) SP 0207/02
- Carrying Bag (for 2000ml jar) SP 0207
- Wall Mount 27736
- Yankauer Handle Flat Tip with Hole 2044403
- Yankauer Handle Crown Tip with Hole 2044401
- Yankauer Tube L= 180 204413018

TECHNICAL FEATURES

Motor	Oiless and maintenance-free piston pump
Power Feeding	14V \approx 4A by AC/DC Universal Adapter 100-240V / 50-60Hz - 100VA (model UE60-140429SPA1)
	12V \approx 4A Internal rechargeable Pb battery - Autonomy 80 min. - Recharging Time 4 hours
	12V \approx 1,9A Car adapter
ISO 10079-1 Classification	HIGH VACUUM / LOW FLOW
Max Vacuum (adjustable)	-0.75 bar -75 kPa -563 mmHg (value at sea level - different altitudes may affect it)
Max free air flow rate	16 l/min
Noise Level	63,0 dBA
Duty cycle	Non-stop operation (by mains only)
IP Code	IP21
Weight	kg 4.55 (unit packed with all accessories)
Size	cm 35 x 18 x 21
Years of Warranty	2
Shipping carton	3
Place of Manufacturing	Italy

Italian
Medical
Touch
MADE IN ITALY

AVAILABLE CONFIGURATIONS

RE 310211	NEW ASKIR 230/12V BR with 1000ml Autoclavable Jar in Makrolon® (max 121°C)
RE 310211/01	NEW ASKIR 230/12V BR with 2000ml Autoclavable Jar in Makrolon® (max 121°C)
RE 310211/06	NEW ASKIR 230/12V BR with 1000ml Autoclavable Jar in Apec® (max 143°C)
RE 310211/11	NEW ASKIR 230/12V BR with 2000ml Autoclavable Jar in Apec® (max 143°C)
RE 310211/03	NEW ASKIR 230/12V BR with 1000ml Flovac® Disposable Liner
RE 310211/04	NEW ASKIR 230/12V BR with 2000ml Flovac® Disposable Liner

**NEW ASKIR 30 12V
MAIN APPLICATIONS**

Ambulance Car

Emergency



**NEW EMIVAC
MAIN APPLICATIONS**

Ambulance Car

Emergency Dept.

Field Hospital

Obstetrics



CE 0123

NEW ASKIR 30 12V is a desk-type electric suction unit for the aspiration of body liquids, oral, nasal and tracheal aspiration in adults or children. Designed for use in ambulance car. Equipped with aspiration regulator and vacuum indicator located on the front panel. Operates by 12V DC only!

NEW EMIVAC is a portable foot-operated suction unit suitable for emergency aspiration. No lubrication or battery change are needed and it's always ready for use. It can be used for soft aspirations such as tracheal suction and on small children and up to 300 mmHg. Provided with a polycarbonate 400 ml autoclavable jar with overflow valve. Foot-operated only!

ACCESSORIES INCLUDED

NEW ASKIR 30 12V

- Liquid Collection Jar with overflow valve system (different options, see below)
- Silicone Tubes ø 6x10mm (autoclavable) - Patient Tube length 140cm
- Conical Connector ø 8-9-10 mm
- Antibacterial & Hydrophobic Filter (single-patient)
- CH20 Canula
- 12V Car Adapter

NEW EMIVAC

- Liquid Collection Jar with overflow valve system
- Silicone Tubes ø 6x10mm (autoclavable) - Patient Tube length 140cm
- Conical Connector ø 8-9-10 mm
- Antibacterial & Hydrophobic Filter (single-patient)

TECHNICAL FEATURES

NEW ASKIR 30 12V

NEW EMIVAC

Motor	Oiless and maintenance-free piston pump	/
Power Feeding	12V ---	Manual (foot-operated)
ISO 10079-1 Classification	HIGH VACUUM / HIGH FLOW	MEDIUM VACUUM - 22l/min
Max Vacuum* (adjustable)	-0.75 bar -75 kPa -563 mmHg *(value at sea level - different altitudes may affect it)	-0.40 bar -40 kPa -300 mmHg
Max free air flow rate	25 l/min	22 l/min
Noise Level	61,5 dBA	/
Duty cycle	Ton: 20min - Toff: 40min	Foot-operated
Weight	kg 2.50	kg 1.15
Size	cm 35 x 21 x 18	cm 22 x 16 x 8
Years of Warranty	2	2
Shipping carton	4	6
Place of Manufacturing	Italy	Italy

Italian
Medical
Touch
MADE IN ITALY

AVAILABLE CONFIGURATIONS

RE 310150/02	NEW ASKIR 30 12V with 1000ml Autoclavable Jar in Makrolon® (max 121°C)
RE 310150/05	NEW ASKIR 30 12V with 2000ml Autoclavable Jar in Makrolon® (max 121°C)
RE 310150/10	NEW ASKIR 30 12V with 1000ml Autoclavable Jar in Apec® (max 143°C)
RE 310150/11	NEW ASKIR 30 12V with 2000ml Autoclavable Jar in Apec® (max 143°C)
RE 310150/12	NEW ASKIR 30 12V with 1000ml Flovac® Disposable Liner
RE 310150/13	NEW ASKIR 30 12V with 2000ml Flovac® Disposable Liner
RE 310300	NEW EMIVAC with 400 ml autoclavable jar in polycarbonate



MAIN APPLICATIONS

Emergency Dept.

Endoscopy

Gastroenterology

General Surgery

Obstetrics

Dental Practice

Internal Rechargeable Battery

CE 0123

ASKIR C30 BR is a portable suction unit for the aspiration of body liquids, oral, nasal and tracheal aspiration in adults or children. For professional use and with a powerful aspiration of max 36l/min. ASKIR C30 BR comes with double collection jars and on a stand with five antistatic castors for easy transport. Two different options for operation: AC/DC adapter and rechargeable battery in case of power black out make it a versatile suction unit approved for NON-STOP operation without overheating. Provided with visual and acoustic alarm indicating low battery level, the main unit is also equipped with vacuum-meter (mmHg & kPa) and vacuum regulator.

ACCESSORIES INCLUDED

- Liquid Collection Jar with overflow valve system (different options, see below)
- Silicone Tubes \varnothing 8x14mm (autoclavable) - Patient Tube length 150cm
- Conical Connector \varnothing 10-11-12mm
- Antibacterial & Hydrophobic Filter (single-patient)
- Universal switching Power Adapter (100-240V/50-60Hz) + Power Cord

TECHNICAL FEATURES

Motor	Oilless and maintenance-free piston pump
Power Feeding	14V \approx 4A by AC/DC Universal Adapter 100-240V / 50-60Hz - 100VA (model UE60-140429SPA1)
	12V \approx 4A Internal rechargeable Pb battery - Autonomy 60 min. - Recharging Time 4 hours
Max Vacuum (adjustable)	-0.80 bar -80 kPa -600 mmHg (value at sea level - different altitudes may affect it)
ISO 10079-1 Classification	HIGH VACUUM / HIGH FLOW
Max free air flow rate	36 l/min
Noise Level	65,5 dBA (with jar) / 68,5 dBA (without jar)
Duty cycle	Non-stop operation (by mains only)
Weight	kg 12.90 (unit packed with all accessories)
Size	cm 32 x 30 x 99
Years of Warranty	2
Shipping carton	1
Place of Manufacturing	Italy

Italian
Medical
Touch
MADE IN ITALY

AVAILABLE CONFIGURATIONS

- | | |
|--------------|---|
| RE 410251 | ASKIR C30 BR with 2x2000 ml autoclavable jars in polycarbonate Makrolon 2858 |
| RE 410251/01 | ASKIR C30 BR with 2x2000 ml Flovac® disposable liners and reusable containers |
| | Jars in APEC® autoclavable up to 143°C available upon request |

MAIN APPLICATIONS

Emergency Dept.

Endoscopy

Gastroenterology

General Surgery

Obstetrics

Dental Practice

CE 0123



ASKIR C30 is a portable suction unit on castors for the aspiration of body liquids, oral, nasal and tracheal aspiration in adults or children. For professional use and with a powerful aspiration of max 40 l/min, ASKIR C30 comes with double collection jars and on a stand with five castors for easy transport. Main unit equipped with vacuum-meter (mmHg & kPa) and vacuum regulator.

ACCESSORIES INCLUDED

BASIC

FS

Liquid Collection Jar with overflow valve system (different options, see below)	<input type="checkbox"/>	<input type="checkbox"/>
Silicone Tubes ø 8x14mm (autoclavable) - Patient Tube length 150cm	<input type="checkbox"/>	<input type="checkbox"/>
Conical Connector ø 10-11-12mm	<input type="checkbox"/>	<input type="checkbox"/>
Antibacterial & Hydrophobic Filter (single-patient) + CH20 Canula	<input type="checkbox"/>	<input type="checkbox"/>
Power Cord with Schuko plug	<input type="checkbox"/>	<input type="checkbox"/>
Footswitch (may be ordered at a later time)		<input type="checkbox"/>

TECHNICAL FEATURES

Motor	Oilless and maintenance-free piston pump
Power Feeding	220-230V / 50-60Hz
Max Vacuum (adjustable)	-0.80 bar -80 kPa -600 mmHg (value at sea level - different altitudes may affect it)
ISO 10079-1 Classification	HIGH VACUUM / HIGH FLOW
Max free air flow rate	40 l/min
Noise Level	61,5 dBA
Duty cycle	Non-stop operation
Weight	kg 9.06 (unit packed with all accessories)
Size	cm 32 x 30 x 99
Years of Warranty	2
Shipping carton	1
Place of Manufacturing	Italy

Italian
Medical
Touch
MADE IN ITALY

AVAILABLE CONFIGURATIONS

RE 410250	ASKIR C30 BASIC with 2x2000 ml autoclavable jars in polycarbonate Makrolon 2858
RE 410250/01	ASKIR C30 FS with 2x2000 ml autoclavable jars in polycarbonate Makrolon 2858 + footswitch
RE 410250/10	ASKIR C30 BASIC with 2x2000 ml Flovac® disposable liners and reusable containers
	Jars in APEC® autoclavable up to 143°C available upon request



with new
MPR system
Multi Purpose Rail

See page 24

MAIN APPLICATIONS

Emergency Dept.

General Surgery

Gynecology

Neurosurgery

Obstetrics

Operating Theatre

Dental Practice

CE 0123

Available in its three configurations, BASIC, FS and FULL, NEW HOSPIVAC 350 has been designed for professional aspiration of bodily fluids, tissues or bones of patients during or after surgery. The state-of-the-art 60 l/min oilless and maintenance-free pump provides high performances with excellent suction capacities and max vacuum built up within a few seconds. A clear dashboard along with a full range of accessories and antistatic castors with brakes make it the ideal device for surgical suction. The new MPR (Multi Purpose Rail) system enhances the versatility of the Hospivac series for easy and quick exchange of different accessories, with no need for tools. In fact, being equipped with five connections, all CA-MI accessories can be easily accommodated, such as rings of various diameters to fit jars of different sizes and types (2L, 3L, 5L), cannula holders or a medical stainless steel rail where to hook any other type of accessory by means of clamps. The new safety trap bottle is also a new standard accessory in the Hospivac series.

The new safety trap bottle is also a new standard accessory in the Hospivac series, bringing up to three the overflow protection systems, besides the valve integrated in the jar and the hydrophobic filter, thus providing the Hospivac series with the highest standards of safety.

AVAILABLE MODELS AND ACCESSORIES INCLUDED	BASIC	FS	FULL
Liquid Collection Jar with overflow valve system (different options, see below)	2	2	2
Rings to accommodate jars (3 sizes depending on the jar)	2	2	2
Safety Trap Bottle (220ml)	1	1	2
Antibacterial & Hydrophobic Filter (single-patient)	1	1	2
Silicone Tubes \varnothing 8x14mm (autoclavable) - Patient Tube length 150cm	1	1	2
Conical Connector \varnothing 10-11-12mm	1	1	2
Air suction inlet	1	1	2
Footswitch with intermittent or continuous operation		1	1
Change-Over System from jar to jar by soft-touch keys			1
Power Cord with Schuko plug	1	1	1

OPTIONAL ACCESSORIES

Rings available in three sizes:

- 2000 ml autoclavable jars
- 2000 ml and 3000 ml Flovac® disposable systems
- 5000 ml autoclavable jars

Cannula holder to store safely suction tube during operation

Footswitch with vacuum regulation function

Silicone Fetal Vacuum Cups

Standard medical stainless steel rail (25x10 or 30x10) and clamps

TECHNICAL FEATURES

Motor	Oilless and maintenance-free piston pump
Power Feeding	220-230V / 50-60Hz or 110-127V / 60Hz
Max Vacuum (adjustable)	-0.90 bar -90 kPa -675 mmHg (value at sea level - different altitudes may affect it)
ISO 10079-1 Classification	HIGH VACUUM / HIGH FLOW
Max free air flow rate	60 l/min
Noise Level	51,7 dBA
Duty cycle	Non-stop operation
Weight	20 kg (unit alone without accessories)
Size	cm 46 x 42 x 85
Years of Warranty	2
Shipping carton	1
Place of Manufacturing	Italy

Italian
Medical
Touch
MADE IN ITALY

MAIN APPLICATIONS

Emergency Dept.

General Surgery

Gynecology

Neurosurgery

Obstetrics

Operating Theatre

Dental Practice



with new
MPR system
Multi Purpose Rail

See page 24

CE 0123

Available in its three configurations, BASIC, FS and FULL, NEW HOSPIVAC 400 has been designed for professional aspiration of bodily fluids, tissues or bones of patients during or after surgery. The state-of-the-art 90 l/min oilless and maintenance-free pump provides high performances with excellent suction capacities and max vacuum built up within a few seconds. A clear dashboard along with a full range of accessories and antistatic castors with brakes make it the ideal device for surgical suction. The new MPR (Multi Purpose Rail) system enhances the versatility of the Hospivac series for easy and quick exchange of different accessories, with no need for tools. In fact, being equipped with five connections, all CA-MI accessories can be easily accommodated, such as rings of various diameters to fit jars of different sizes and types (2L, 3L, 5L), cannula holders or a medical stainless steel rail where to hook any other type of accessory by means of clamps. The new safety trap bottle is also a new standard accessory in the Hospivac series. The new safety trap bottle is also a new standard accessory in the Hospivac series, bringing up to three the overflow protection systems, besides the valve integrated in the jar and the hydrophobic filter, thus providing the Hospivac series with the highest standards of safety.

AVAILABLE MODELS AND ACCESSORIES INCLUDED

	BASIC	FS	FULL
Liquid Collection Jar with overflow valve system (different options, see below)	2	2	2
Rings to accommodate jars (3 sizes depending on the jar)	2	2	2
Safety Trap Bottle (220ml)	1	1	2
Antibacterial & Hydrophobic Filter (single-patient)	1	1	2
Silicone Tubes ø 8x14mm (autoclavable) - Patient Tube length 150cm	1	1	2
Conical Connector ø 10-11-12mm	1	1	2
Air suction inlet	1	1	2
Footswitch with intermittent or continuous operation		1	1
Change-Over System from jar to jar by soft-touch keys			1
Power Cord with Schuko plug	1	1	1

OPTIONAL ACCESSORIES

Rings available in three sizes:

- 2000 ml autoclavable jars
- 2000 ml and 3000 ml Flovac® disposable systems
- 5000 ml autoclavable jars

Cannula holder to store safely suction tube during operation

Footswitch with vacuum regulation function

Silicone Fetal Vacuum Cups

Standard medical stainless steel rail (25x10 or 30x10) and clamps

TECHNICAL FEATURES

Motor	Oilless and maintenance-free piston pump
Power Feeding	220-230V / 50-60Hz
Max Vacuum (adjustable)	-0.90 bar -90 kPa -675 mmHg (value at sea level - different altitudes may affect it)
ISO 10079-1 Classification	HIGH VACUUM / HIGH FLOW
Max free air flow rate	90 l/min
Noise Level	46,4 dBA
Duty cycle	Non-stop operation
Weight	21 kg (unit alone without accessories)
Size	cm 46 x 42 x 85
Years of Warranty	2
Shipping carton	1
Place of Manufacturing	Italy

Italian
Medical
Touch
MADE IN ITALY

MAIN APPLICATIONS

Emergency Dept.

General Surgery

Gynecology

Neurosurgery

Obstetrics

Operating Theatre

Dental Practice

CE 0123



Internal Rechargeable Battery

with new **MPR system** Multi Purpose Rail

See page 24

For environments where a battery back up is required, NEW HOSPIVAC BR is the unique solution for surgeons and professionals, providing high performances along with the internal rechargeable battery capable of operating the unit for more than 4 hours in absence of mains electricity. With the Energy-Saving function, a pressure sensor placed in the PCB reduces the speed of the motor when the unit is ON and no aspiration is taking place. This extends the autonomy of the battery and reduces the noise level. Designed with fast connectors, the new Multi Purpose Rail enables the operator to easy interchange of accessories, such as rings of various diameters to accommodate jars of any sizes and types, safety trap bottles, cannula holders or a standard medical rail where to hook any accessory by means of clamps.

STANDARD ACCESSORIES INCLUDED

- 2 x Liquid Collection Jar with overflow valve system (different options, see below)
- 2 Sets of Silicone Tubes \varnothing 8x14mm (autoclavable) - Patient Tube length 150cm
- Conical Connector \varnothing 10-11-12mm
- 2 x Antibacterial & Hydrophobic Filter (single-patient)
- Footswitch
- Power Cord with Schuko plug

FUNCTIONS

- Electronic Change-Over System from jar to jar
- Energy-saving
- Internal rechargeable battery and charger
- Footswitch with intermittent or continuous use

OPTIONS

- Vacuum Regulator Footswitch
- Cannula Container
- Silicone Fetal Vacuum Cups

TECHNICAL FEATURES

Motor	Oiless and maintenance-free piston pump
Power Feeding	220-230V / 50-60Hz with internal AC/DC Power Adapter
	Internal Rechargeable Battery (Lead-type 12V \approx 20A)
	Battery Autonomy 250 min. - Recharging Time 8 hours
Max Vacuum (adjustable)	-0.85 bar -85 kPa -637,5 mmHg (value at sea level - different altitudes may affect it)
ISO 10079-1 Classification	HIGH VACUUM / HIGH FLOW
Max free air flow rate	50 l/min
Absorbed Power	90VA
Duty cycle	Non-stop operation (by mains only)
Weight	kg 20
Size	cm 46 x 42 x 85
Years of Warranty	2
Shipping carton	1
Place of Manufacturing	Italy

Italian Medical Touch
MADE IN ITALY






AVAILABLE CONFIGURATIONS

- RE 410400 NEW HOSPIVAC BR with 2x2000 ml autoclavable jar in polycarbonate Makrolon 2858
- RE 410400/03 NEW HOSPIVAC BR with 2x5000 ml autoclavable jar in polycarbonate Makrolon 2858
- RE 410400/01 NEW HOSPIVAC BR with 2x2000 ml Flovac® disposable liner and reusable container
- RE 410400/02 NEW HOSPIVAC BR with 2x5000 ml Flovac® disposable liner and reusable container
- Jars in APEC® autoclavable up to 143°C available upon request



Thanks to the new MPR System, HOSPIVAC series offer a great versatility to users when it comes to change type of jars for liquid collection, regardless in which configuration the suction unit has been supplied in origin. The table below shows the components of the MPR System.

NEW HOSPIVAC SERIES JARS INTERCHANGE

COMPONENT	DESCRIPTION	REF.
	MPR - Multipurpose Rail with 5 locking slots. Supplied with each Hospivac.	31255
	CAPS to close the locking slots when not in use	31253
	Safety trap bottle (220ml)	***
	RING for 2L autoclavable jar RING for 5L autoclavable jar RING for 2L or 3L Flovac® RING for catheter holder	31254 31254/01 31254/02 31254/03
	Stainless steel standard medical rail, 25x10 Stainless steel standard medical rail, 30x10	*** 23613
	Right HOOK for stainless steel rail Left HOOK for stainless steel rail	31256 31257

ASKIR C30 SERIES JARS INTERCHANGE

EXISTING JARS	TO SWITCH TO	TO SWITCH TO	TO SWITCH TO	TO SWITCH TO
	2000 ml autoclavable jars	4000 ml/5000 ml autoclavable jars	2000 ml disposable liners	3000 ml disposable liners
2000 ml autoclavable jars		DO NOT FIT	Ring adapters SP 0078/04 to be removed from existing jar holder	Ring adapters SP 0078/04 to be removed from existing jar holder
2000 ml disposable liners	Ring adapters SP 0078/04 to be inserted into existing jar holder	DO NOT FIT		DO NOT FIT

REUSABLE JARS are equipped with screw cover with handle for easy grip, autoclavable silicone o-ring for tight seal, overflow valve system integrated in the cover, clear graduated scale in ml with 100ml or 200ml intervals, CA-MI branding. Suitable for central vacuum systems and CA-MI suction units. Available in two types of polycarbonate, Makrolon® and Apec®.

REUSABLE JARS in MAKROLON® – FOR STEAM STERILIZATION UP TO 121 °C



	Jar with: cover overflow valve o-ring	Jar	Cover with: overflow valve o-ring	O-ring	Suitable for:
400 ml	RE 210301	RE 210305	RE 210302	RE 210304	EMIVAC
1000 ml	RE 210001/02	RE 210003	RE 210352/01	RE 210354	ASPIRET ASKIR series (all except C30 series) Central Vacuum Plants
2000 ml	RE 210351/01	RE 210353	RE 210352/01	RE 210354	ASPIRET - ASKIR Series HOSPIVAC Series Central Vacuum Plants
4000 ml	RE 210006	RE 210007	RE 210008	RE 210306	HOSPIVAC Series Vuoto centralizzato
5000 ml	RE 210010	RE 210013	RE 210012	RE 210307	HOSPIVAC Series Central Vacuum Plants

REUSABLE JARS in APEC® 1745 – FOR STEAM STERILIZATION UP TO 143 °C



	Jar with: cover overflow valve o-ring	Jar	Cover with: overflow valve o-ring	O-ring	Suitable for:
1000 ml	RE 210009	RE 210002	RE 210352/02	RE 210354	ASPIRET ASKIR series (all except C30 series) Central Vacuum Plants
2000 ml	RE 210351/05	RE 210353/01	RE 210352/02	RE 210354	ASPIRET - ASKIR Series HOSPIVAC Series Central Vacuum Plants
5000 ml	RE 210010/01	RE 210013/01	RE 210012/01	RE 210307	HOSPIVAC Series Vuoto centralizzato

FLOVAC® DISPOSABLE LINERS equipped with polyethylene disposable liner, hydrophobic filter, antibacterial filter, overflow system, reusable container with clear graduated scale in ml with 50ml intervals. The gelling kit is a powder inside liners with germicidal function turning the sucked liquid into a semisolid mass, preventing cross-contamination risks of staff in charge for hygiene and waste disposal.

FLOVAC® DISPOSABLE LINERS & CONTAINERS



	Liner with: cover filter		Liner with: cover filter gelling kit		Reusable Container	Suitable for
1000 ml	31848		31858		31843**	ASPIRET ASKIR series (all except C30 series)
1000 ml	31845		31854		31840	Central Vacuum Plants
2000 ml	31846		31855		31841	ASPIRET - ASKIR Series HOSPIVAC Series Central Vacuum Plants
3000 ml	31847		31856		31842	HOSPIVAC Series Central Vacuum Plants

** Requires additional round spacer (SP.0220) when ordered for ASKIR Series

Hermetically welded **RIGID LID**

Flovac® Disposable Liner

1000 ml / 2000 ml / 3000 ml

PATIENT PORT for connection of the tube going to the patient

Plug to close the **PATIENT** port before disposal

VACUUM PORT for connection to the vacuum central plant or to CA-MI suction unit

TANDEM PORT for connection of several liners in cascade

Plug to close the **TANDEM** port when only one container is in use and/or before final disposal

Flovac® Reusable Container

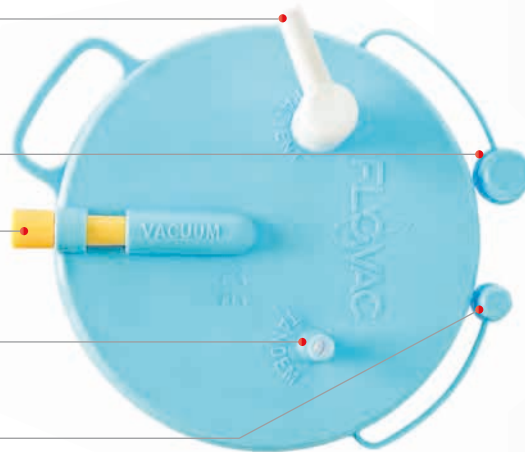
1000 ml / 2000 ml / 3000 ml

OVERFLOW VALVE

FLOVAC® disposable containers are equipped with a GORE™ Medical Membrane hydrophobic filter with antibacterial, anti-foaming and electrosurgical smoke protection.

SUPPORT RING

A support ring with a spring clip allows the suction tube to be easily fixed in to avoid obstructions.



The disposable soft LINER is made in polyethylene and is hermetically welded to a rigid lid inside which the hydrophobic, antireflux and antibacterial filter is placed. This filter also operates as overflow valve system deactivating suction whenever maximum fill capacity is reached. The liner has to be placed in its dedicated reusable and autoclavable FLOVAC® rigid CONTAINER in polycarbonate. FLOVAC® systems replace therefore the use of autoclavable jars, decreasing the costs for cleaning and sterilization. A full line of accessories make FLOVAC® line the ideal partner for collecting liquids and fluids.

FLOVAC® LINER TECHNICAL FEATURES


Lid material	HDPE (high density polyethylene)
"VACUUM" port	Conic connector, female
"PATIENT" port	Ø 14.0 ÷ 15.5 mm (Ø 8.0 ÷ 9.2 mm with elbow connector)
"TANDEM" port	Ø 8.0 ÷ 9.2 mm
Maximum suction value	-750 mbar (-570 mm Hg)
Maximum graduation interval	50 ml
Patient hose size	Inner Ø ≥ 6 mm L=2.5 m max
Vacuum hose size	Inner Ø ≥ 6 mm L=1.8 m max

FLOVAC® FILTER TECHNICAL FEATURES

Filtration efficiency (typical)	>99.999995% with particle size of 0.1µ
Membrane	100% expanded PTFE GORE™ Medical Membrane
Prefilter	micro fiberglass
Support	non-woven PE/PES

Support ring for FLOVAC® container (all sizes) with 25x5 slide	970010210	1
Support ring for FLOVAC® container (all sizes) with 30x5 slide	970010220	
Support ring for FLOVAC® container (all sizes) with 41x4 slide (also suitable for BAXTER wall slide)	970010214	
Support ring for FLOVAC® container with 45x5 slide (also suitable for ABBOT wall slide)	970010215	
Support ring for autoclavable jars (1000 and 2000 ml) with 25x5 slide	920200422	
ON-OFF tap for mounting on FLOVAC® container support ring	000010057	2
ON-OFF tap with control vacuum gauge for mounting on FLOVAC® container support ring	000010056	
Plastic wall slide 25x5	920200004	3
Plastic wall slide 30x5	920200029	
Plastic wall slide 45x5	920200477	
Metal clamp (chrome-plated) for 30x10 rail with slide 25x5	000230000	4
Plastic clamp (technopolymer) for 30x10 rail with slide 25x5	000230500	
4-place trolley for FLOVAC® container with support ring, ON-OFF tap and control vacuum gauge	000260950	5
4-place trolley for FLOVAC® container with support ring, ON-OFF tap and control vacuum regulator	000260955	
4-place trolley for FLOVAC® with support ring	000260953	
2-place trolley for FLOVAC® container with support ring, ON-OFF tap and control vacuum gauge	000260951	
2-place trolley for FLOVAC® container with support ring, ON-OFF tap and control vacuum regulator	000260956	
2-place trolley for FLOVAC® with support ring	000260954	6
Tandem tube Ø 8x11 L=0.38 m for cascade connection	970010120	
Disposable vacuum breaker	000320000	
Disposable vacuum breaker with 1.8m hose	000320010	8
Specimen container	000036100	9



	ASPIRET ASKIR 20 ASKIR 30 ASKIR 230-12V BR ASKIR 30 12V	ASKIR 36 BR ASKIR 36 LI-ION ASKIR 118 ASKIR 118 BASIC	EMIVAC	ASKIR C30 ASKIR C30 BR	HOSPIVAC 350 HOSPIVAC 400 HOSPIVAC BR
SET of silicone TUBES, FILTERS and CONICAL CONNECTORS					
	Tube Ø6x10mm Conical connector	RE 210355		RE 210355/01	
	Tube Ø6x10mm Conical connector Antibacterial filter	SP 0036		SP 0043	
	Tube Ø 8 x 14 mm Conical connector		RE 210355/03		RE 210355/03
	Tube Ø 8 x 14 mm Conical connector Antibacterial filter		SP 0036/02	SP 0036/02	SP 0032/01 (for 350 and BR) SP 0032 (for Hospivac 400)
	FLOVAC® liners Tube Ø6x10mm Conical connector	SP 0158/01			
	FLOVAC® liners Tube Ø8x14mm Conical connector		SP 0160/01	SP 0160/01	SP 0160/01
	Roll of silicone tube Ø6x10 mm	Length 1m = SP 0045/02 - Length 10m = SP 0045/03 - Length 50m = SP 0045/04			
	Roll of silicone tube Ø8X14 mm	Length 1m = SP 0045/05 - Length 10m = SP 0045/06 - Length 50m = SP 0045/07			
MALE CONNECTORS					
	Ø 8-9-10 mm (pack of 5's)	SP 0223	SP 0223	SP 0223	SP 0223
CONICAL CONNECTORS					
	Ø 8-9-10 mm	RE 210410		RE 210410	
	Ø 10-11-12 mm		RE 210420	RE 210420	RE 210420
FILTERS (Antibacterial and Hydrophobic)					
	Ø 64 with 8 mm connector	SP 0046		SP 0046	
	Ø 64 with 11mm connector		SP 0121	SP 0121	SP 0121 (350 and BR only)
	Ø 90 with 11mm connector				SP 0047 (for 400 only)
ASPIRATION PROBES					
	CH20	RE 210400 (10 pcs)	RE 210400 (10 pcs)		RE 210400 (10 pcs)
YANKAUER CANNULAS					
	Yankauer Handle Flat Tip with Hole	2044403	2044403	2044403	2044403
	Yankauer Handle Crown Tip with Hole	2044401	2044401	2044401	2044401
	Yankauer Tube L= 180	204413018	204413018	204413018	204413018
CATHETER CONTAINER					
	Tube of polycarbonate Ø 54 mm by 400 mm length. Fully autoclavable (121°C - 15 min)				000032
SILICONE FETAL VACUUM CUPS					
	Length 210 mm, Ø 50 mm, size XS			VC-95100	VC-95100
	Length 210 mm, Ø 60 mm, size S			VC-95200	VC-95200
	Length 210 mm, Ø 70 mm, size M			VC-95300	VC-95300

	ASPIRET ASKIR 20 ASKIR 30 ASKIR 230-12V BR ASKIR 30 12V	ASKIR 36 BR ASKIR 36 LI-ION ASKIR 118 ASKIR 118 BASIC	EMIVAC	ASKIR C30 ASKIR C30 BR	HOSPIVAC 350 HOSPIVAC 400 HOSPIVAC BR
VACUUM GAUGE in mmHg and Kpa					
Ø 40 mm with graduated scale	SP 0018 (for Aspiret)				
Ø 50 mm with graduated scale	SP 0017 (for Askir)	SP 0017 (except ASKIR 118)		SP 0017	
Ø 63 mm with graduated scale					SP 0073
ELECTRONIC BOARD					
for ASKIR 36 LI-ION, ASKIR 118 BASIC		SP 0272			
for ASKIR 230/12V BR, ASKIR 36BR	SP 0205	SP 0205			
for ASKIR C30 - FS version				SP 0107	
for ASKIR C30 BR				SP 0205/01	
for HOSPIVAC – BASIC version					SP 0107/02
for HOSPIVAC – version FS and FULL					SP 0107/03
for HOSPIVAC BR					SP 0271
ON/OFF SWITCH					
Pack of 2's for ASPIRET, ASKIR 20 and 30	SP 0009/04				
Pack of 2's for ASKIR 230/12V BR, 36 BR, C30 BR	SP 0009/08	SP 0009/08		SP 0009/08	
Pack of 1's for ASKIR C30, HOSPIVAC – BASIC				SP 0009/07	SP 0009/07
BATTERY PACK					
Lead type for ASKIR 230/12V BR, 36 BR, C30 BR	SP 0012/01	SP 0012/01		SP 0012/01	
Li-ion type for ASKIR 36 LI-ION, 118, 118 BASIC		SP 0012/03			
Lead type for HOSPIVAC BR					SP 0012/04
WALL MOUNT					
 For ambulance, with recharge and operation function (12V 4A)		ASU 118 (118-WM only)			
 Wall mount for support	27736 (except Aspiret and Twin)	27736 (36 models only)			
FOOT-SWITCH CONTROL					
 Footswitch intermittent or continuous operation				SP 0068/01 (FS version)	SP 0068/01 (FS and FULL)
STAND on CASTORS					
 Stand on 5 castors with brakes (antistatic upon request)	27731 (for ASPIRET)	27730 (36BR and LI-ION)		SP 0213	SP 0113/01 (BASIC version)
 Base on 4 antistatic castors only for HOSPIVAC	27730 (for ASKIR serie)				SP 0113/03 (FS and FULL)
POWER ADAPTER					
Car adapter 12V for ASKIR 30 12V	SP 0021/01	SP 0007/02 (not for 118 WM)			
Car adapter 12V	SP 0007/02 (for 230 12V BR)				
Power adapter AC/DC	SP 0208/01 (for 230 12V BR)	SP 0208/01		SP 0208/01 (for C30 BR)	
Power cord	SP 0020/03 (for 230 12V BR)	SP 0020/03		SP 0020/03 (for C30 BR)	
CARRY BAG					
 for any model with 1000 ml jar	SP 0207/02	SP 0207/02			
for any model with 2000 ml jar	SP 0207	SP 0207			
for ASKIR 118		SP 0207/01			

DESK-TYPE suction units



MODEL	TYPE of JAR / CONFIGURATION	REF- NO.
NEW ASPIRET:	1000ml Autoclavable Jar in Makrolon® (max 121°C) 2000ml Autoclavable Jar in Makrolon® (max 121°C) 1000ml Autoclavable Jar in Apec® (max 143°C) 2000ml Autoclavable Jar in Apec® (max 143°C) 1000ml Flovac® Disposable Liner 2000ml Flovac® Disposable Liner	RE 310001 RE 310001/01 RE 310001/19 RE 310001/20 RE 310002 RE 310002/01
NEW ASKIR 20:	1000ml Autoclavable Jar in Makrolon® (max 121°C) 2000ml Autoclavable Jar in Makrolon® (max 121°C) 1000ml Autoclavable Jar in Apec® (max 143°C) 2000ml Autoclavable Jar in Apec® (max 143°C) 1000ml Flovac® Disposable Liner 2000ml Flovac® Disposable Liner	RE 310100/12 RE 310100/13 RE 310100/64 RE 310100/70 RE 310101/12 RE 310101/13
NEW ASKIR 30:	1000ml Autoclavable Jar in Makrolon® (max 121°C) 2000ml Autoclavable Jar in Makrolon® (max 121°C) 1000ml Autoclavable Jar in Apec® (max 143°C) 2000ml Autoclavable Jar in Apec® (max 143°C) 1000ml Flovac® Disposable Liner 2000ml Flovac® Disposable Liner	RE 310100/02 RE 310100/03 RE 310100/74 RE 310100/63 RE 310101/02 RE 310100/53
NEW ASKIR 30 Proximity:	1000ml Autoclavable Jar in Makrolon® (max 121°C) 2000ml Autoclavable Jar in Makrolon® (max 121°C) 1000ml Autoclavable Jar in Apec® (max 143°C) 2000ml Autoclavable Jar in Apec® (max 143°C) 1000ml Flovac® Disposable Liner 2000ml Flovac® Disposable Liner	RE 310100/02 RE 310100/03 RE 310100/75 RE 310100/62 RE 310101/02 RE 310100/53

EMERGENCY suction units



MODEL	TYPE of JAR / CONFIGURATION	REF- NO.
NEW ASKIR 30 12V	1000ml Autoclavable Jar in Makrolon® (max 121°C) 2000ml Autoclavable Jar in Makrolon® (max 121°C) 1000ml Autoclavable Jar in Apec® (max 143°C) 2000ml Autoclavable Jar in Apec® (max 143°C) 1000ml Flovac® Disposable Liner 2000ml Flovac® Disposable Liner	RE 310150/02 RE 310150/05 RE 310150/10 RE 310150/11 RE 310150/12 RE 310150/13
NEW EMIVAC	400 ml Autoclavable Jar in Polycarbonate	RE 310300

ON CASTORS
suction units



MODEL		TYPE of JAR / CONFIGURATION	REF- NO.
ASKIR C30	BASIC	Double 2000ml Autoclavable Jars in Makrolon® (max 121°C)	RE 410250
	FS	Double 2000ml Makrolon® Jars + Footswitch	RE 410250/01
	BASIC AP	Double 2000ml Autoclavable Jars in Apec® (max 143°C)	RE 410250/16
	FS AP	Double 2000ml Apec® Jars + Footswitch	RE 410250/15
	BASIC FLOVAC	Double 2000ml Flovac® Disposable Liners	RE 410250/10
	FS FLOVAC	Double 2000ml Flovac® Liners + Footswitch	RE 410250/14
NEW HOSPIVAC 350	BASIC 2	Double 2000ml Autoclavable Jars in Makrolon® (max 121°C)	RE 410356
	FS 2	Double 2000ml Makrolon® Jars + Footswitch	RE 410356/06
	FULL 2	Double 2000ml Makrolon® Jars + Footswitch + Change-Over	RE 410356/01
	BASIC 5	Double 5000ml Autoclavable Jars in Makrolon® (max 121°C)	RE 410356/39
	FS 5	Double 5000ml Makrolon® Jars + Footswitch	RE 410356/40
	FULL 5	Double 5000ml Makrolon® Jars + Footswitch + Change-Over	RE 410356/41
	BASIC PSU 2	Double 2000ml Autoclavable Jars in Polysulfone	RE 410356/59
	FS PSU 2	Double 2000ml Polysulfone Jars + Footswitch	RE 410356/60
	FULL PSU 2	Double 2000ml Polysulfone Jars + Footswitch + Change-Over	RE 410356/61
	BASIC PSU 5	Double 5000ml Autoclavable Jars in Polysulfone	RE 410356/62
	FS PSU 5	Double 5000ml Polysulfone Jars + Footswitch	RE 410356/63
	FULL PSU 5	Double 5000ml Polysulfone Jars + Footswitch + Change-Over	RE 410356/64
	BASIC AP 2	Double 2000ml Autoclavable Jars in Apec® (max 121°C)	RE 410356/56
	FS AP 2	Double 2000ml Apec® Jars + Footswitch	RE 410356/38
	FULL AP 2	Double 2000ml Apec® Jars + Footswitch + Change-Over	RE 410356/55
	BASIC AP 5	Double 5000ml Autoclavable Jars in Apec® (max 121°C)	RE 410356/58
	FS AP 5	Double 5000ml Apec® Jars + Footswitch	RE 410356/54
	FULL AP 5	Double 5000ml Apec® Jars + Footswitch + Change-Over	RE 410356/43
	BASIC FLOVAC 2	Double 2000ml Flovac® Liners	RE 410356/27
	FS FLOVAC 2	Double 2000ml Flovac® Liners + Footswitch	RE 410356/29
FULL FLOVAC 2	Double 2000ml Flovac® Liners + Footswitch + Change-Over	RE 410356/28	
BASIC FLOVAC 3	Double 3000ml Flovac® Liners	RE 410356/02	
FS FLOVAC 3	Double 3000ml Flovac® Liners + Footswitch	RE 410356/09	
FULL FLOVAC 3	Double 3000ml Flovac® Liners + Footswitch + Change-Over	RE 410356/30	
NEW HOSPIVAC 400	BASIC 2	Double 2000ml Autoclavable Jars in Makrolon® (max 121°C)	RE 410350
	FS 2	Double 2000ml Makrolon® Jars + Footswitch	RE 410350/09
	FULL 2	Double 2000ml Makrolon® Jars + Footswitch + Change-Over	RE 410350/01
	BASIC 5	Double 5000ml Autoclavable Jars in Makrolon® (max 121°C)	RE 410350/36
	FS 5	Double 5000ml Makrolon® Jars + Footswitch	RE 410350/37
	FULL 5	Double 5000ml Makrolon® Jars + Footswitch + Change-Over	RE 410350/38
	BASIC PSU 2	Double 2000ml Autoclavable Jars in Polysulfone	RE 410350/57
	FS PSU 2	Double 2000ml Polysulfone Jars + Footswitch	RE 410350/58
	FULL PSU 2	Double 2000ml Polysulfone Jars + Footswitch + Change-Over	RE 410350/59
	BASIC PSU 5	Double 5000ml Autoclavable Jars in Polysulfone	RE 410350/60
	FS PSU 5	Double 5000ml Polysulfone Jars + Footswitch	RE 410350/61
	FULL PSU 5	Double 5000ml Polysulfone Jars + Footswitch + Change-Over	RE 410350/62
	BASIC AP 2	Double 2000ml Autoclavable Jars in Apec® (max 121°C)	RE 410350/40
	FS AP 2	Double 2000ml Apec® Jars + Footswitch	RE 410350/46
	FULL AP 2	Double 2000ml Apec® Jars + Footswitch + Change-Over	RE 410350/33
	BASIC AP 5	Double 5000ml Autoclavable Jars in Apec® (max 121°C)	RE 410350/48
	FS AP 5	Double 5000ml Apec® Jars + Footswitch	RE 410350/39
	FULL AP 5	Double 5000ml Apec® Jars + Footswitch + Change-Over	RE 410350/47
	BASIC FLOVAC 2	Double 2000ml Flovac® Liners	RE 410350/08
	FS FLOVAC 2	Double 2000ml Flovac® Liners + Footswitch	RE 410350/03
FULL FLOVAC 2	Double 2000ml Flovac® Liners + Footswitch + Change-Over	RE 410350/11	
BASIC FLOVAC 3	Double 3000ml Flovac® Liners	RE 410350/27	
FS FLOVAC 3	Double 3000ml Flovac® Liners + Footswitch	RE 410350/28	
FULL FLOVAC 3	Double 3000ml Flovac® Liners + Footswitch + Change-Over	RE 410350/25	

DESK-TYPE
BATTERY
OPERATED
suction units



MODEL	TYPE of JAR / CONFIGURATION	REF- NO.
NEW ASKIR 118	1000ml Autoclavable Jar in Makrolon® (max 121°C) 1000ml Autoclavable Jar in Apec® (max 143°C) 1000ml Flovac® Disposable Liner	RE 410151 RE 410151/05 RE 410151/02
NEW ASKIR 118-WM	1000ml Autoclavable Jar in Makrolon® (max 121°C) 1000ml Autoclavable Jar in Apec® (max 143°C) 1000ml Flovac® Disposable Liner	RE 410150 RE 410150/05 RE 410150/02
NEW ASKIR 118 BASIC	1000ml Autoclavable Jar in Makrolon® (max 121°C) 1000ml Autoclavable Jar in Apec® (max 143°C) 1000ml Flovac® Disposable Liner	RE 410171 RE 410171/03 RE 410171/01
NEW ASKIR 118 BASIC-WM	1000ml Autoclavable Jar in Makrolon® (max 121°C) 1000ml Autoclavable Jar in Apec® (max 143°C) 1000ml Flovac® Disposable Liner	RE 410170 RE 410170/03 RE 410170/01
NEW ASKIR 230/12V BR	1000ml Autoclavable Jar in Makrolon® (max 121°C) 2000ml Autoclavable Jar in Makrolon® (max 121°C) 1000ml Autoclavable Jar in Apec® (max 143°C) 2000ml Autoclavable Jar in Apec® (max 143°C) 1000ml Flovac® Disposable Liner 2000ml Flovac® Disposable Liner	RE 310211 RE 310211/01 RE 310211/06 RE 310211/11 RE 310211/03 RE 310211/04
ASKIR 36BR (LEAD)	1000ml Autoclavable Jar in Makrolon® (max 121°C) 2000ml Autoclavable Jar in Makrolon® (max 121°C) 1000ml Autoclavable Jar in Apec® (max 143°C) 2000ml Autoclavable Jar in Apec® (max 143°C) 1000ml Flovac® Disposable Liner 2000ml Flovac® Disposable Liner	RE 410200/03 RE 410200/09 RE 410200/10 RE 410200/12 RE 410201 RE 410201/01
ASKIR 36BR (LI-ION)	1000ml Autoclavable Jar in Makrolon® (max 121°C) 2000ml Autoclavable Jar in Makrolon® (max 121°C) 1000ml Autoclavable Jar in Apec® (max 143°C) 2000ml Autoclavable Jar in Apec® (max 143°C) 1000ml Flovac® Disposable Liner 2000ml Flovac® Disposable Liner	RE 410205 RE 410205/01 RE 410205/04 RE 410205/05 RE 410205/02 RE 410205/03

ON CASTORS
BATTERY
OPERATED
suction units



MODEL		TYPE of JAR / CONFIGURATION	REF- NO.
ASKIR C30 BR	BASIC BASIC AP BASIC FLOVAC	Double 2000ml Autoclavable Jars in Makrolon® (max 121°C) Double 2000ml Autoclavable Jars in Apec® (max 143°C) Double 2000ml Flovac® Disposable Liners	RE 410251 RE 410251/03 RE 410251/01
NEW HOSPIVAC BR	FULL 2 FULL 5 FULL FLOVAC 2 FULL FLOVAC 3	Double 2000ml Makrolon® Jars + Footswitch + Change-Over Double 5000ml Makrolon® Jars + Footswitch + Change-Over Double 2000ml Flovac® Liners + Footswitch + Change-Over Double 3000ml Flovac® Liners + Footswitch + Change-Over	RE 410400 RE 410400/03 RE 410400/01 RE 410400/02

CA-MI

Italian Medical Touch



SURGICAL SUCTION UNITS



EC Certificate

Production Quality Assurance System
Directive 93/42/EEC on Medical Devices (MDD), Annex V
(Devices in Class IIa, IIb or III)

No. G2 063105 0047 Rev. 01

Manufacturer:

CA-MI S.R.L.

Via Ugo La Malfa, 13
Frazione Pilastro
43013 Langhirano (PR)
ITALY

**Product
Category(ies):**

**Aerosol Therapy Equipment, Kits for Aerosol Therapy,
Thermal Water Inhaler, Suction Unit, Surgical Suction
Equipment, Breast Pump, Kit Accessory for Electric
Breast Pump, Blood Pressure Monitor, Electronic
Thermometer, Infrared Thermometer, Tens Device,
Pulse Oximeter**

The Certification Body of TÜV SÜD Product Service GmbH declares that the aforementioned manufacturer has implemented a quality assurance system for manufacture and final inspection of the respective devices / device categories in accordance with MDD Annex V. This quality assurance system conforms to the requirements of this Directive and is subject to periodical surveillance. For marketing of class IIb and III devices an additional Annex III certificate is mandatory. All applicable requirements of the testing and certification regulation of TÜV SÜD Group have to be complied with. For details and certificate validity see: www.tuvsud.com/ps-cert?q=cert:G2_063105_0047_Rev_01

Report No.:

ITA1626749

Valid from:

2021-02-09

Valid until:

2024-05-26

Date,

2021-02-09

Christoph Dicks
Head of Certification/Notified Body



Product Service

Certificate

No. Q5 063105 0045 Rev. 02

Holder of Certificate:

**CA-MI S.R.L.**

Via Ugo La Malfa, 13
Frazione Pilastro
43013 Langhirano (PR)
ITALY

Certification Mark:



Scope of Certificate:

Design and development, production, sale and after-sales technical assistance of medical equipments for surgery (electrical and manual suction pumps), electric breast pumps, medical devices for breathing (aerosol therapy equipments and thermal water inhaler), medical devices for stimulation (tens) and related accessories. Placing on the market under its own name of devices for monitoring of vital physiological parameters (pulse oximeters, thermometers, blood pressure monitors, sphygmomanometer and stethoscopes), incentive spirometers, devices for phlebology (graduated compression medical stockings) and anti-decubitus mattress.
Distribution of active and non-active non implantable medical devices.

The Certification Body of TÜV SÜD Product Service GmbH certifies that the company mentioned above has established and is maintaining a quality management system, which meets the requirements of the listed standard(s). All applicable requirements of the testing and certification regulation of TÜV SÜD Group have to be complied with. For details and certificate validity see:

www.tuvsud.com/ps-cert?q=cert:Q5_063105_0045_Rev._02

Report No.: ITA1620011

Valid from: 2021-03-25

Valid until: 2022-07-31

Date, 2021-03-25

Christoph Dicks

Head of Certification/Notified Body

Certificate

No. Q5 063105 0045 Rev. 02

Applied Standard(s): EN ISO 13485:2016
Medical devices - Quality management systems -
Requirements for regulatory purposes
(ISO 13485:2016)
DIN EN ISO 13485:2016

Facility(ies): CA-MI S.R.L.
Via Ugo La Malfa, 13, Frazione Pilastro, 43013 Langhirano (PR), ITALY

Design and development, production, sale and after-sales technical assistance of medical equipments for surgery (electrical and manual suction pumps), electric breast pumps, medical devices for breathing (aerosol therapy equipments and thermal water inhaler), medical devices for stimulation (tens) and related accessories. Placing on the market under its own name of devices for monitoring of vital physiological parameters (pulse oximeters, thermometers, blood pressure monitors, sphygmomanometer and stethoscopes), incentive spirometers, devices for phlebology (graduated compression medical stockings) and anti-decubitus mattress. Distribution of active and non-active non implantable medical devices.

CA-MI S.r.l.
Via Strada per Parma 34, Frazione Pilastro, 43013 Langhirano (PR), ITALY

Warehouse of active and non-active non implantable medical devices and components used in production.

CA-MI S.r.l.
Via Ugo La Malfa 27, Frazione Pilastro, 43013 Langhirano (PR), ITALY

Production of medical devices for surgery (electrical and manual suction pumps), warehouse of active and non-active non implantable medical devices and components used in production.

/