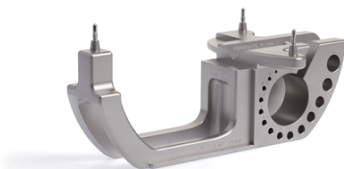


## BASIC INSTRUMENTS & ACCESSORIES

### 41874 | INSTRUMENT CALIBRATION MATRIX

Device for instant intraoperative calibration of length, diameter and vector of a rigid instrument:

- Supports a variety of rigid surgical instruments
- Precision manufactured stainless steel
- Autoclavable design for easy sterilization
- Compatible with Brainlab instrument arrays for manually or pre-calibrated tools



#### REQUIREMENTS

- Disposable Reflective Marker Spheres
- Minimum software version required: VectorVision Cranial/ENT 6.01, -Hip 2.0, -Knee 1.5, -Spine 5.1, Kolibri Cranial/ENT 1.0

### 53103 | POINTER EXTENDED WITH SHARP TIP FOR SPINE / TRAUMA / HIP

Standard instrument for the intraoperative registration of anatomical landmarks and surface point acquisition:

- Extended design for improved access to anatomical structures
- Sharp tip for precise surface point acquisition
- Includes a gauge for accuracy checks, to be stored in sterilization tray
- Autoclavable design



#### REQUIREMENTS

- Disposable Reflective Marker Spheres

### 53153 | DISPOSABLE CLIP-ON REMOTE CONTROL (20 PCS)

The disposable and sterile Clip-On Remote Control enables an easy active patient registration in combination with existing Brainlab pointers for selected applications.

- Point acquisition for patient registration with simple push of a button
- Reduction of line-of-sight issues
- Less space required as for pivoting
- Enables remote control of selected features within the software



#### COMPATIBILITY

- Spine & Trauma 3D 2.0 or higher
- Knee Essential 2.5 or higher
- Hip 6 or higher

### 54270 | DISPOSABLE STERILE TOUCHPENS (24 PROCEDURES)

Disposable sterile touchpens to control touchscreen displays.

- Quantity: 24 packs a 2 pcs
- Disposable item

