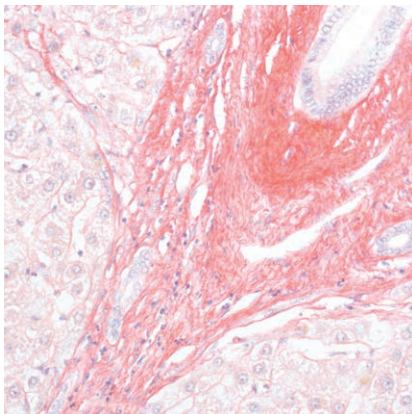


Perls-Van Gieson kit

Three-reagent kit for the detection of reactive ferric (Fe³⁺) ions in cells (Prussian blue/Berlin blue reaction) with Fuchsin Acid Van Gieson counterstain to differentiate collagen from connective tissue

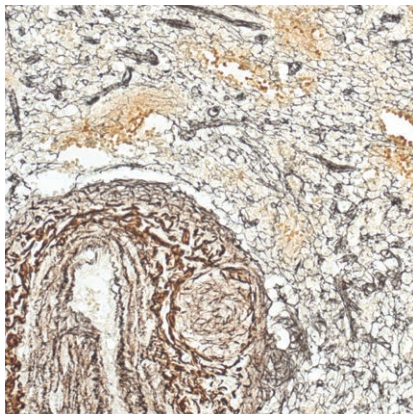
for 100 tests PEG-100T
3x100 mL PEG-K-100



Picro-Sirius Red kit

Three-reagent kit for collagen staining and visualization in histology. Contains Sirius Red dye which enhances collagen birefringence so it can easily be identified by observing the section under polarized light.

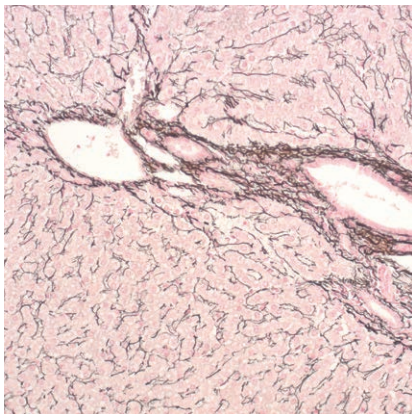
for 100 tests PSR-100T



Reticulin kit

Seven-reagent kit for detecting argyrophilic reticulin fibers. It clearly differentiates between collagen and reticulin and nerve fibers and connective tissue. The main function of reticular fibers is to provide support and are normally found in liver, lymph nodes, spleen and kidneys.

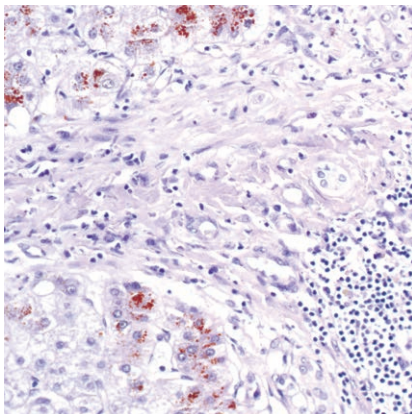
for 100 tests RE-100T
7x50 mL **RE-K-50**
7x100 mL RE-K-100



Reticulin Contrast kit

Nine-reagent kit for detecting argyrophilic reticulin fibers according to Gordon and Sweets. The kit contains gold chloride solution that enhances visualization of reticulin fibers and it also contains Nuclear Fast Red (Kernechtrot) reagent that enables fine contrasting background.

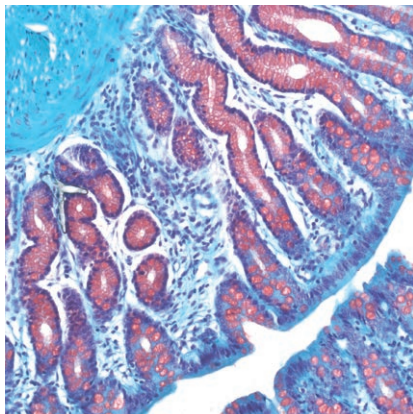
for 100 tests RET-100T
9x50 mL RET-K-50
9x100 mL RET-K-100



Rhodanine kit

Four-reagent kit for detecting copper and copper-associated protein (CAP) in patients suffering from Wilson's disease. Abnormal copper accumulations are predominately found in liver tissue, but can also be found in the brain and cornea.

for 100 tests ROD-100T
5x100 mL ROD-K-100



Safranin O kit

Four-reagent kit for identification of cartilage, mucins and mastocyte granules used in histology and cytology.

for 100 tests SAFO-100T
4x100 mL SAFO-K-100